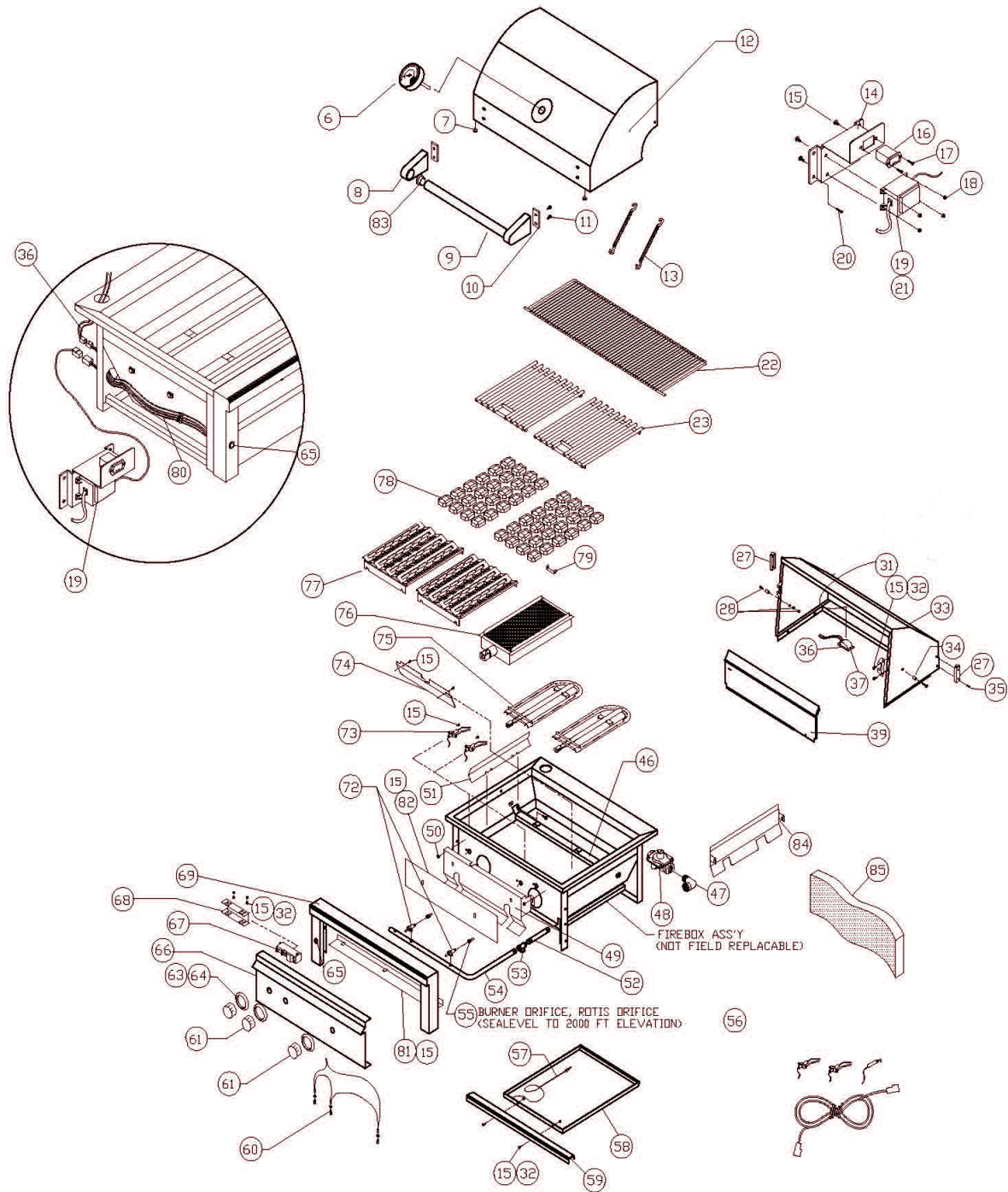


# L500PS Parts Breakdown

Click on any circled item, then add the part to your cart.  
If it won't click, the part is not available. If the part is not available, please call us at: 888.988.4546



Item	Part No.	Name	Qty	Uom	NOTES
6	33558	THERMOMETER, WATERTIGHT	1	EA	
7	32477	HOOD BUMPER, .500 DIA	2	EA	
8	11117	END CAP FDR HOOD HANDLE	2	EA	
9	34200	HOOD HANDLE, L500	1	EA	
10	20016	INSULATOR, HOOD HANDLE	2	EA	
11	31601	BOLT, HEX HEAD, 1/4 - 20 X 7/8", SIS	4	EA	
12	80626	FRONT HOOD ASSY, L500	1	EA	
13	31780	EXTENSION SPRING	2	EA	
14	33827	TRANSFORMER MOUNTING BRACKET	1	EA	
15	14014	SCREW #8-32 x 3/8 PH TRUSS HEAD S/S	6	EA	
16	31879	BATTERY HOLDER	1	EA	
Not Shown	90261	WIRE HARNESS, L500 BATTERY PACK	1	EA	
17	30751	SCREW #6-32 X 1/2 PH FLAT HEAD	2	EA	
18	31238	NUT, #8-32 SIS	4	EA	
19	33525	TRANSFORMER	1	EA	
20	31013	SCREW, #8 X 1/2 PH TRUSS HD TYPE 'A'	1	EA	
21	80662	COMPLETE TRANSFORMER/BATTERY BKT ASSY	1	EA	
22	33778	WARMING SHELF, L500	1	EA	
23	33779	GRATE 13 1/2' X 17 - 3/4', L500	2	EA	
27	32468	HOOD STOP, ALL PRO	2	EA	
Not Shown	32470	BUMPER FOR HOOD STOP, .750 DIA	2	EA	
28	14013	PIVOT SCREW, 1/4-20 X 1" HEX DRIVE	2	EA	
Not Shown	14009	PIVOT SCREW NUT, HEX, 1/4-20 SIS	2	EA	
Not Shown	14026	PIVOT WASHER, SPLIT LOCK, 1/4 SIS	4	EA	
31	33772	LIGHT PANEL / REAR HOOD LINER, L500	1	EA	

Item	Part No.	Name	Qty	Uom	NOTES
32	14024	LOCK NUT, #8-32, SIS	2	EA	
33	80625	REAR HOOD ASSY, L500	1	EA	
34	34510	HOOD SPACER, ALL PRO SERIES	2	EA	
35	32469	SCREW /HOOD STOP-#8-32 X 1' PH TRUSS HD	4	EA	
36	80446	HOOD LIGHT ASS'Y, SINGLE W/IOW BULB	1	EA	
37	31979	BULB, REPLACEMENT, 10W HALOGEN	1	EA	
Not Shown	32322	GLASS REPLACEMENT COVER W/ CLIP	1	EA	
39	80630	IR PANEL ASSY, (INCLUDES BURNER), L500	1	EA	
46	80752	BURNER HANGER, L500	1	EA	
47	13010	ELBOW, STREET, 1/2" 90 DEGREE-NG ONLY	1	EA	
Not Shown	13054	ELBOW, 3/8" FLARE TO 1/2" FIP-LP ONLY	1	EA	
48	30781	REGULATOR 4/11 N/G ONLY	1	EA	
Not Shown	13053	REGULATOR W/30' HOSE DOUBLE STAGE-LP	1	EA	
49	80749	HEAT SHIELD, L500	1	EA	
50	14023	NUT, COMBINATION (FDR HEAT SHIELD)	2	EA	
51	33751	BRIQUETTE HEAT DIVIDER	1	EA	
52	34267	PIPE EXTENSION 1/2 NPT X 5'	1	EA	
53	13029	'T' FITTING, 1/2 FPT	1	EA	
Not Shown	34268	PIPE PLUG, 1/2 MPT, FDR 'T' FITTING	1	EA	
54	80732	MANIFOLD ASSY W/VALVES, L500	1	EA	
55	31880	ORIFICE NG #43	2	EA	
Not Shown	13020	ORIFICE BURNER LP (#54 SHORT)	2	EA	
56	90199	COMPLETE ELECTRODE KIT, L500	1	EA	
57	31031	ALTERNATE LIGHTING DEVICE, MATCH HOLDER	1	EA	
58	33756	DRIP PAN , L500	1	EA	

Item	Part No.	Name	Qty	Uom	NOTES
59	33757	DRI P PAN FASCI A, L500	1	EA	
60	80614	LED HARNESS ASSY , L500 NON-IR	1	EA	
61	90137	KNOB BURNER STAINLESS	2	EA	
63	10001	BEZEL	2	EA	
64	31929	BEZEL SCREW, #6-32 X 1/8 PH PAN	2	EA	
65	80650	LIGHT SWITCH AND HARNESS	1	EA	
66	33775	FRONT PANEL , L500	1	EA	
67	31162	IGN ITION MODULE - 2 SPARK	1	EA	
68	31398	IGNITER SHIELD	1	EA	
69	80627	BULLNOSE ASSY, L500	1	EA	
72	34103	MAIN BURNER VALVE W/MICROSWITCH	2	EA	
Not Shown	32845	MICROSWITCH REPLACEMENT FDR VALVE		EA	
73	31254	ELECTRODE W / 15" WIRE (SEE ALSO #56)	1	EA	
Not Shown	31255	ELECTRODE W / 25" WIRE (SEE ALSO #56)	1	EA	
74	31673	GAS DEFLECTOR, L500	1	EA	
75	33750	TUBULAR BURNER	1	EA	
76	33943	PROSEAR BURNER	1	EA	
77	80744	BRIQUETTE TRAY W / BRIQUETTES AND CLIPS (4 COMPLETE ROWS)	2	EA	
78	90183	BRIQUETTES 24 PER BOX	1	EA	
79	34246	BRIQUETTE HOLD DOWN CLIP	48	EA	
80	80648	MAIN POWER HARNESS, L500	1	EA	
81	34164	BULLNOSE FILLER PLATE, L500	1	EA	
82	34178	INSULATION COVER PLATE, L500	1	EA	
83	31738	INSULATING BUSHING, HOOD HANDLE	2	EA	
84	33894	FIREBOX PARTITION	1	EA	
85	34252	FIREBOX INSULATION STRIP - 9" X 30" X 1 1/2"	1	EA	