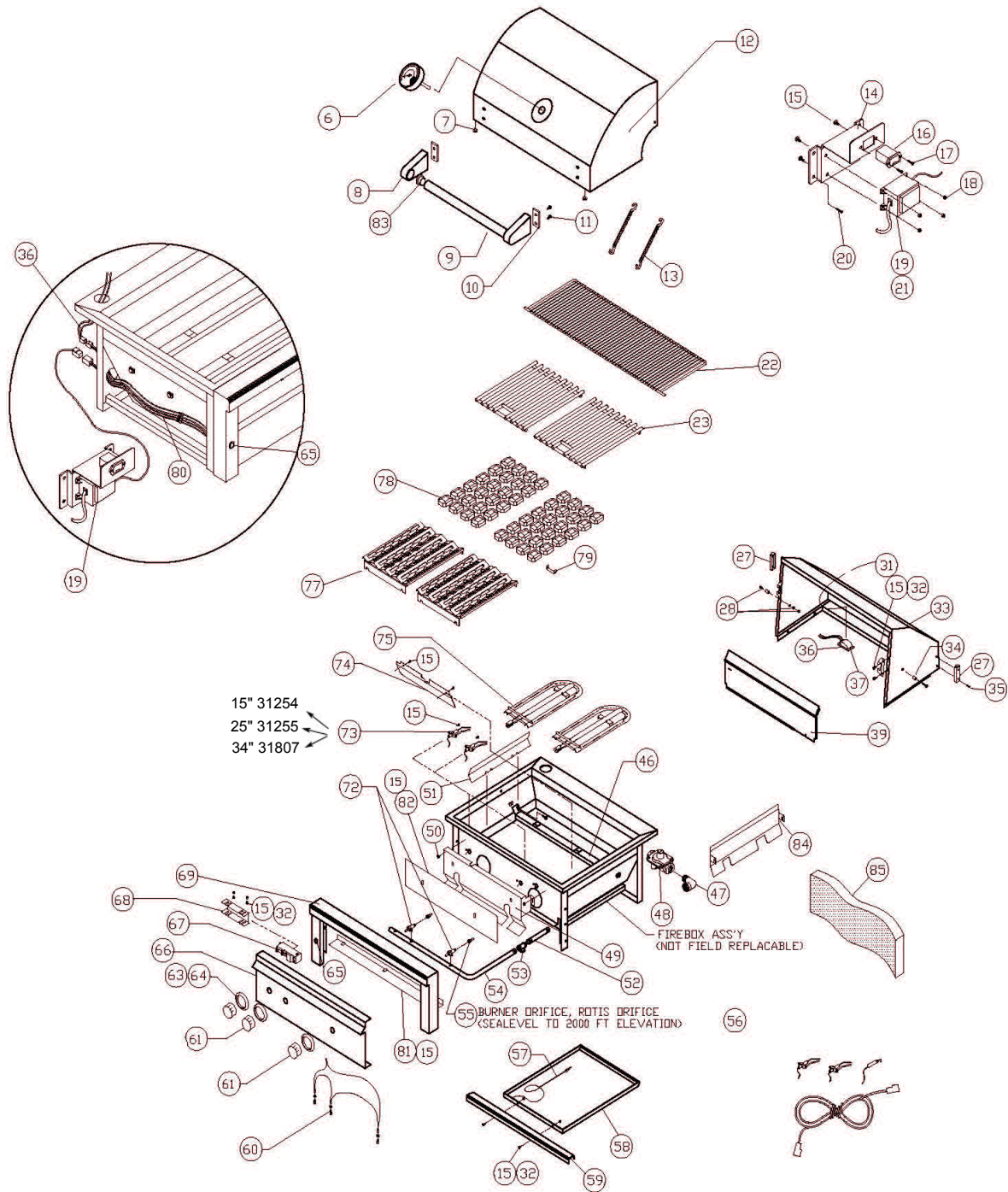


L600F Grill

Click on any circled item, then add the part to your cart. If it won't click, the part is not available. If the part is not available, please call us at: 888.988.4546



| Item | Part No. | Name | Qty | Uom | NOTES |
|------|----------|---|-----|-----|-------|
| 6 | 33558 | THERMOMETER, WATERTIGHT | 1 | EA | |
| 7 | 32477 | HOOD BUMPER, .500 DIA | 2 | EA | |
| 8 | 11117 | END CAP FDR HOOD HANDL E | 2 | EA | |
| 9 | 34075 | HOOD HANDLE, L600 | 1 | EA | |
| 10 | 20016 | I NSUL ATOR, HOOD HANDLE | 1 | EA | |
| 11 | 31601 | BOLT, HEX HEAD, 1/ 4 - 20 X 7/8' , SIS | 4 | EA | |
| 12 | 80697 | FRONT HOOD ASSY, L600 | 1 | EA | |
| 13 | 31780 | EXTENSION SPRING | 2 | EA | |
| 14 | 33827 | TRANSFORMER MOUNTING BRACKET | 1 | EA | |
| 15 | 14014 | SCREW #8-32 x 3/8 PH TRUSS HEAD S/S | 4 | EA | |
| 16 | 31879 | BATTERY HOLDER | 1 | EA | |
| NI | 90262 | WIRE HARNESS, L600/L700 BATTERY PACK | 1 | EA | |
| 17 | 30751 | SCREW #6-32 X 1/2 PH FLAT HEAD | 1 | EA | |
| 18 | 31238 | NUT, # 8- 32 SIS | 4 | EA | |
| 19 | 33525 | TRANSFORMER | 1 | EA | |
| 20 | 31013 | SCREW, #8 X 1/2 PH TRUSS HD TYPE 'A' | 4 | EA | |
| 21 | 80662 | COMPLETE TRANSFORMER/BATTERY BKT ASSY | 1 | EA | |
| 22 | 34071 | WARMING SHELF, L600 | 1 | EA | |
| 23 | 34072 | GRATE - 16 1/2" X 17 3/4", L600 | 2 | EA | |
| 27 | 32468 | HOOD STOP, ALL PRO | 1 | EA | |
| NI | 32470 | BUMPER FOR HOOD STOP, .750 DIA | 1 | EA | |
| 28 | 14013 | PIVOT SCREW, 114-20 X 1° HEX DRIVE | 1 | EA | |
| NI | 14009 | PIVOT SCREW NUT, HEX, 1/4-20 SIS | 1 | EA | |
| NI | 14026 | PIVOT W ASHER, SPLIT LOCK, 1/4 SIS | 1 | EA | |
| 31 | 34065 | LIGHT PANEL/REAR HOOD LINER, L600 | 1 | EA | |

| Item | Part No. | Name | Qty | Uom | NOTES |
|-----------|----------|--|-----|-----|-------|
| 32 | 14024 | LOCK NUT, #8-32, SIS | 1 | EA | |
| 33 | 80698 | REAR HOOD ASSY, L600 | 1 | EA | |
| 34 | 34510 | HOOD SPACER, ALL PRO SERIES | 1 | EA | |
| 35 | 32469 | SCREW /HOOD STOP-#8-32 X 1' PH TRUSS HD | 1 | EA | |
| 36 | 80446 | HOOD LIGHT ASS'Y, SINGLE W/IOW BULB | 1 | EA | |
| 37 | 31979 | BULB, REPLACEMENT, 10W HALOGEN | 1 | EA | |
| NI | 32322 | GLASS REPLACEMENT COVER W/ CLIP | 1 | EA | |
| 39 | 80701 | REAR FINISHING PANEL, NON-ROTIS, L600 | 1 | EA | |
| 46 | 80751 | BURNER HANGER, L600 | 1 | EA | |
| 47 | 13010 | ELBOW, STREET, 1/2" 90 DEGREE-NG ONLY | 1 | EA | |
| NI | 13054 | ELBOW, 3/8" FLARE TO 1/2" FIP-LP ONLY | 1 | EA | |
| 48 | 30781 | REGULATOR 4/11 N/G ONLY | 1 | EA | |
| NI | 13053 | REGULATOR W/30' HOSE DOUBLE STAGE-LP | 1 | EA | |
| 49 | 80750 | HEAT SHIELD, L600 | 1 | EA | |
| 50 | 14023 | NUT, COMBINATION (FDR HEAT SHIELD) | 1 | EA | |
| 51 | 33751 | BRIQUETTE HEAT DIVIDER | 1 | EA | |
| Not Shown | NOTE | (FOR 30" MODELS ONLY) | | EA | |
| 52 | 34267 | PIPE EXTENSION 1/2 NPT X 5' | 1 | EA | |
| 53 | 13029 | 'T' FITTING, 1/2 FPT | 1 | EA | |
| NI | 34268 | PIPE PLUG, 1/2 MPT, FDR 'T' FITTING | 1 | EA | |
| 54 | 80734 | MANIFOLD ASSY W/VALVES, L600 NON -ROTIS | 1 | EA | |
| 55 | 31880 | ORIFICE NG #43 | 3 | EA | |
| Not Shown | 13020 | ORIFICE BURNER LP (#54 SHORT) | 3 | EA | |
| 56 | 90208 | COMPLETE ELECTRODE KIT, L600, L700 NON -IR | 1 | EA | |

| Item | Part No. | Name | Qty | Uom | NOTES |
|------|----------|---|-----|-----|-------|
| 57 | 31031 | ALTERNATE LIGHTING DEVICE, MATCH HOLDER | 1 | EA | |
| 58 | 34057 | DRIP PAN, L600 | 1 | EA | |
| 59 | 34058 | DRIP PAN FASCIA, L600 | 1 | EA | |
| 60 | 80615 | LED HARNESS ASSY, L600/L700 NON -IR | 1 | EA | |
| 61 | 90137 | KNOB BURNER STAINLESS | 2 | EA | |
| 63 | 10001 | BEZEL | 3 | EA | |
| 64 | 31929 | BEZEL SCREW, #6-32 X 1/8 PH PAN | 6 | EA | |
| 65 | 80650 | LIGHT SWITCH AND HARNESS | 1 | EA | |
| 66 | 34080 | FRONT PANEL, L600 NON - ROTIS | 1 | EA | |
| 67 | 31161 | IGNITION MODULE - 4 SPARK | 1 | EA | |
| 68 | 31398 | IGNITER SHIELD | 1 | EA | |
| 69 | 80699 | BULLNOSE ASSY, L600 | 1 | EA | |
| 72 | 34103 | MAIN BURNER VALVE W/MICROSWITCH | 1 | EA | |
| 73 | 31254 | ELECTRODE W / 15" WIRE (SEE ALSO #56) | 1 | EA | |
| 73 | 31255 | ELECTRODE W / 25" WIRE (SEE ALSO #56) | 1 | EA | |
| 73 | 31807 | ELECTRODE W/34" WIRE | 1 | EA | |
| 74 | 34079 | GAS DEFLECTOR, L600 | 1 | EA | |
| 75 | 33750 | TUBULAR BURNER | 2 | EA | |
| 77 | 80743 | BRIQUETTE TRAY W/BRIQUETTES AND CLIPS (3 COMPLETE ROWS) | 1 | EA | |
| 78 | 90183 | BRIQUETTES 24 PER BOX | 1 | EA | |
| 79 | 34246 | BRIQUETTE HOLD DOWN CLIP | 1 | EA | |
| 80 | 80648 | MAIN POWER HARNESS, L500 | 1 | EA | |
| 81 | 34165 | BULLNOSE FILLER PLATE, L600 | 1 | EA | |
| 82 | 34179 | INSULATION COVER PLATE, L600 | 1 | EA | |
| 83 | 31738 | INSULATING BUSHING, HOOD HANDLE | 1 | EA | |
| 84 | 33894 | FIREBOX PARTITION | 1 | EA | |

| Item | Part No. | Name | Qty | Uom | NOTES |
|------|----------|---|-----|-----|-------|
| 85 | 34253 | FIREBOX INSULATION STRIP - 6" X 36" X 1 1/2" | 1 | EA | |