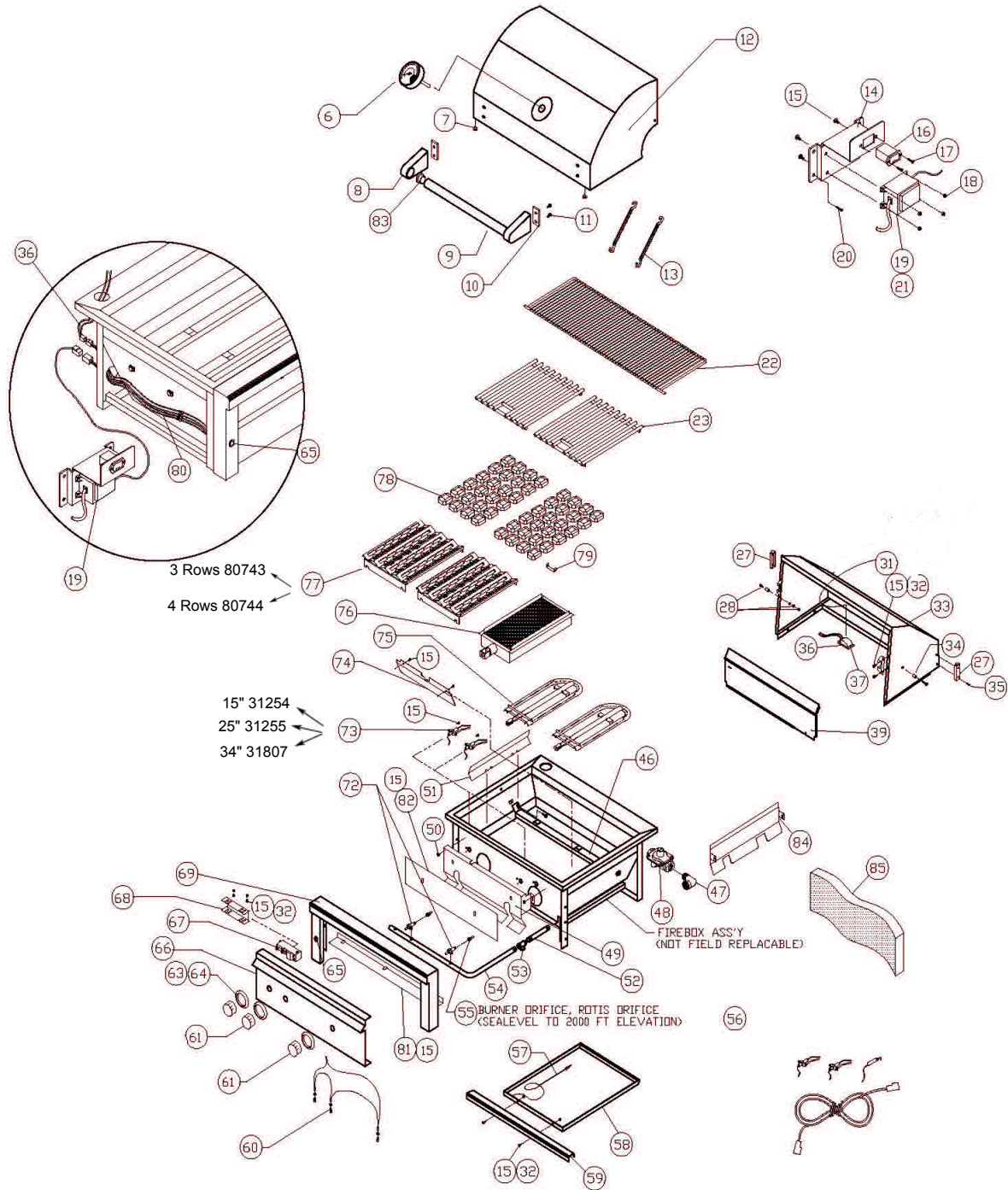


L700PS Parts Breakdown

Click on any circled item, then add the part to your cart. If it won't click, the part is not available. If the part is not available, please call us at: 888.988.4546



Item	Part No.	Name	Qty	Uom	NOTES
6	33558	THERMOMETER, WATERTIGHT	1	EA	
7	32477	HOOD BUMPER, .500 DIA	2	EA	
8	11117	END CAP FDR HOOD HANDLE	2	EA	
9	34605	HOOD HANDLE, L700	1	EA	
10	20016	INSULATOR, HOOD HANDLE	1	EA	
11	31601	BOLT, HEX HEAD, 1/4 - 20 X 7/8", SIS	4	EA	
12	80781	FRONT HOOD ASSY, L700	1	EA	
13	31780	EXTENSION SPRING	2	EA	
14	33827	TRANSFORMER MOUNTING BRACKET	1	EA	
15	14014	SCREW #8-32 x 3/8 PH TRUSS HEAD S/S	4	EA	
16	31879	BATTERY HOLDER	1	EA	
NI	90262	WIRE HARNESS, L600/L700 BATTERY PACK	1	EA	
17	30751	SCREW #6-32 X 1/2 PH FLAT HEAD	1	EA	
18	31238	NUT, # 8- 32 SIS	4	EA	
19	33525	TRANSFORMER	1	EA	
20	31013	SCREW, #8 X 1/2 PH TRUSS HD TYPE 'A'	4	EA	
21	80662	COMPLETE TRANSFORMER/BATTERY BKT ASSY	1	EA	
22	34601	WARMING SHELF, L700	1	EA	
23	33779	GRATE 13 1/2' X 17 - 3/4' , L500	2	EA	
23	34602	GRATE - 12" X 17 3/4", L700 CENTER	1	EA	
27	32468	HOOD STOP, ALL PRO	1	EA	
NI	32470	BUMPER FOR HOOD STOP, .750 DIA	1	EA	
28	14013	PIVOT SCREW, 1/4-20 X 1" HEX DRIVE	1	EA	
NI	14009	PIVOT SCREW NUT, HEX, 1/4-20 SIS	1	EA	
NI	14026	PIVOT WASHER, SPLIT LOCK, 1/4 SIS	1	EA	

Item	Part No.	Name	Qty	Uom	NOTES
31	34575	LIGHT PANEL/REAR HOOD LINER, L700	1	EA	
32	14024	LOCK NUT, #8-32, SIS	1	EA	
33	80782	REAR HOOD ASSY, L700	1	EA	
34	34510	HOOD SPACER, ALL PRO SERIES	1	EA	
35	32469	SCREW /HOOD STOP-#8-32 X 1' PH TRUSS HD	1	EA	
36	80446	HOOD LIGHT ASS'Y, SINGLE W/LOW BULB	1	EA	
37	31979	BULB, REPLACEMENT, 10W HALOGEN	1	EA	
NI	32322	GLASS REPLACEMENT COVER W/ CLIP	1	EA	
39	80788	REAR FINISHING PANEL, NON-ROTIS, L700	1	EA	
46	80803	BURNER HANGER, L700	1	EA	
47	13010	ELBOW, STREET, 1/2" 90 DEGREE-NG ONLY	1	EA	
NI	13054	ELBOW, 3/8" FLARE TO 1/2" FIP-LP ONLY	1	EA	
48	30781	REGULATOR 4/11 N/G ONLY	1	EA	
NI	13053	REGULATOR W/30' HOSE DOUBLE STAGE-LP	1	EA	
49	80802	HEAT SHIELD, L700	1	EA	
50	14023	NUT, COMBINATION (FDR HEAT SHIELD)	1	EA	
51	33751	BRIQUETTE HEAT DIVIDER	1	EA	
Not Shown	NOTE	(FOR 30" MODELS ONLY)		EA	
52	34267	PIPE EXTENSION 1/2 NPT X 5'	1	EA	
53	13029	'T' FITTING, 1/2 FPT	1	EA	
NI	34268	PIPE PLUG, 1/2 MPT, FDR 'T' FITTING	1	EA	
54	80787	MANIFOLD ASSY W/VALVES, L700 NON -ROTIS	1	EA	
55	31880	ORIFICE NG #43	3	EA	
Not Shown	13020	ORIFICE BURNER LP (#54 SHORT)	3	EA	

Item	Part No.	Name	Qty	Uom	NOTES
56	90208	COMPLETE ELECTRODE KIT, L600, L700 NON -IR	1	EA	
57	31031	ALTERNATE LIGHTING DEVICE, MATCH HOLDER	1	EA	
58	34567	DRIP PAN, L700	1	EA	
59	34568	DRIP PAN FASCIA, L700	1	EA	
60	80615	LED HARNESS ASSY, L600/L700 NON -IR	1	EA	
61	90137	KNOB BURNER STAINLESS	2	EA	
63	10001	BEZEL	3	EA	
64	31929	BEZEL SCREW, #6-32 X 1/8 PH PAN	6	EA	
65	80650	LIGHT SWITCH AND HARNESS	1	EA	
66	34612	FRONT PANEL, L700 NON - ROTIS	1	EA	
67	31161	IGNITION MODULE - 4 SPARK	1	EA	
68	31398	IGNITER SHIELD	1	EA	
69	80783	BULLNOSE ASSY, L700	1	EA	
72	34103	MAIN BURNER VALVE W/MICROSWITCH	1	EA	
73	31254	ELECTRODE W / 15" WIRE (SEE ALSO #56)	1	EA	
73	31255	ELECTRODE W / 25" WIRE (SEE ALSO #56)	1	EA	
73	31807	ELECTRODE W/34" WIRE	1	EA	
74	34578	GAS DEFLECTOR, L700	1	EA	
75	33750	TUBULAR BURNER	2	EA	
76	33943	PROSEAR BURNER	1	EA	
77	80743	BRIQUETTE TRAY W/BRIQUETTES AND CLIPS (3 COMPLETE ROWS)	1	EA	
77	80744	BRIQUETTE TRAY W / BRIQUETTES AND CLIPS (4 COMPLETE ROWS)	1	EA	
78	90183	BRIQUETTES 24 PER BOX	1	EA	
79	34246	BRIQUETTE HOLD DOWN CLIP	1	EA	
80	80648	MAIN POWER HARNESS, L500	1	EA	
81	33540	BULLNOSE FILLER PLATE, L700	1	EA	

Item	Part No.	Name	Qty	Uom	NOTES
82	34582	INSULATION COVER PLATE, L700	1	EA	
83	31738	INSULATING BUSHING, HOOD HANDLE	1	EA	
84	33894	FIREBOX PARTITION	1	EA	
Not Shown	NOTE	(ONLY FOR 30" AND 36" UNITS)		EA	
85	34658	FIREBOX INSULATION STRIP - 6" X 42" X 1 1/2"	1	EA	