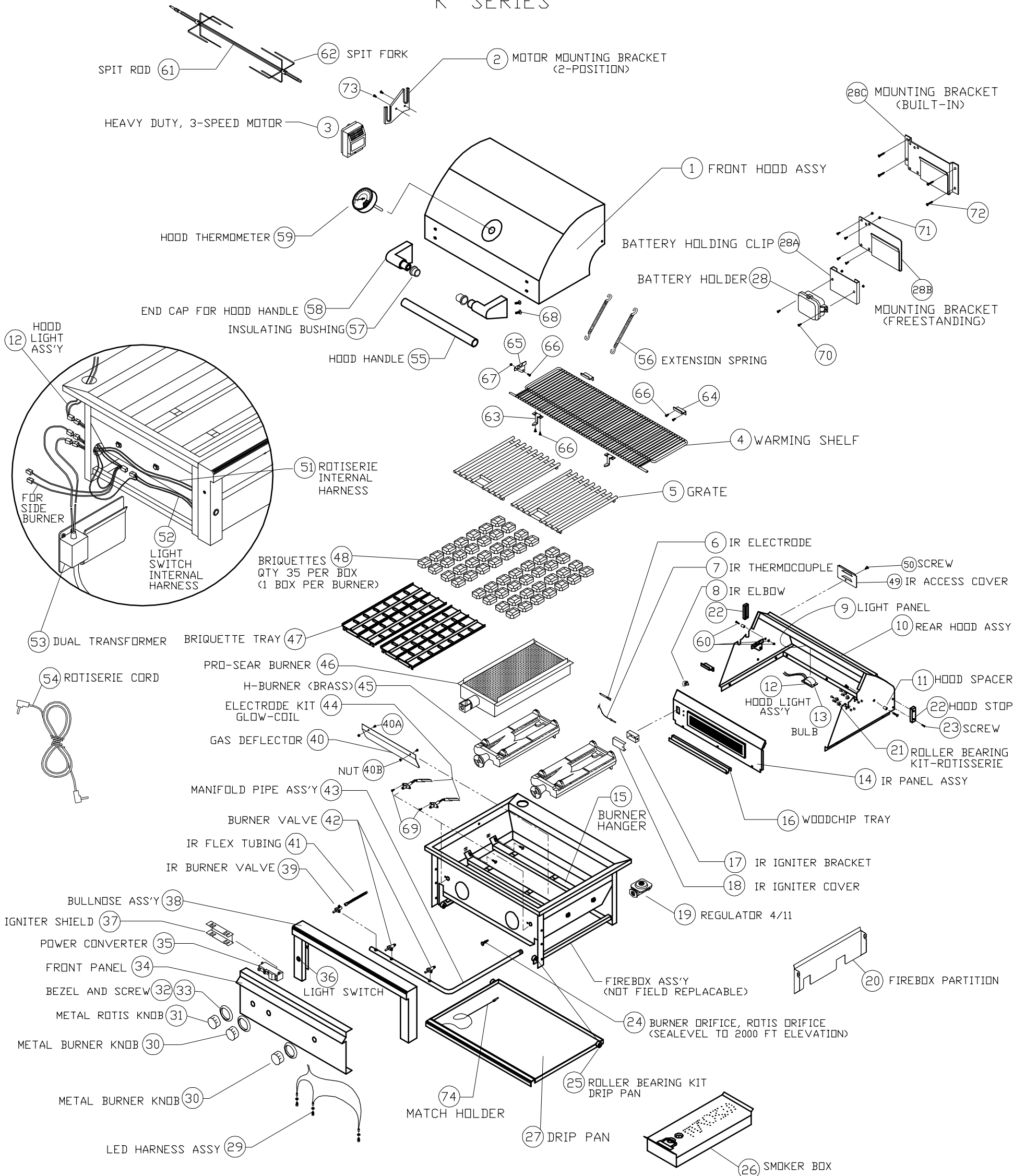




2008/2009 PROFESSIONAL SERIES  
'K' SERIES



2008/2009 PROFESSIONAL SERIES PARTS LIST  
'K' SERIES

ITEM	GRILL SIZE	PART NO.	DESCRIPTION
1	L27	80322	FRONT HOOD ASSY, 27"
	L30	80309	FRONT HOOD ASSY, 30"
	L36	80310	FRONT HOOD ASSY, 36"
	L42	80311	FRONT HOOD ASSY, 42"
	L54	80312	FRONT HOOD ASSY, 54"
2	ALL	90132	MOTOR MOUNTING BRACKET KIT, ALL PRO
3	ALL	80277	MOTOR ASSY, HEAVY DUTY 3 SPEED
4	L27	32555	WARMING SHELF, PRO 27"
	L30	32109	WARMING SHELF, PRO 30"
	L36	32110	WARMING SHELF, PRO 36"
	L42	32111	WARMING SHELF, PRO 42"
	L54	32112	WARMING SHELF, PRO 54"
5	L27	17012	(2) GRATES- 12" x 18"
	L30	30018	(2) GRATES- 13 1/2" X 21"
	L36	17020	(2) GRATES- 16 1/2" X 18 1/2"
	L42	30018	(2) GRATES- 13 1/2" X 21"
		30019	(1) GRATE- 12" X 21" (CENTER)
	L54	30018	(2) GRATES- 13 1/2" X 21"
		30019	(2) GRATES- 12" X 21"
6	ALL	32171	IR ELECTRODE, GLOW-COIL
7	ALL	20018	THERMOCOUPLE
8	ALL	31795	IR BRASS ELBOW, 7/16-20 MALE THREAD
9	L27	32551	LIGHT PANEL/REAR HOOD LINER, 27"
	L30	32156	LIGHT PANEL/REAR HOOD LINER, 30"
	L36	32441	LIGHT PANEL FOR DUAL LIGHTS, 36"
	L42	32442	LIGHT PANEL FOR DUAL LIGHTS, 42"
	L54	32159	LIGHT PANEL FOR DUAL LIGHTS, 54"
10	L27	80320	REAR HOOD ASSY, PRO 27"
		80321	REAR HOOD ASSY, PRO 27" NON-IR
	L30	80269	REAR HOOD ASSY, PRO 30"
	L36	80270	REAR HOOD ASSY, PRO 36"
	L42	80271	REAR HOOD ASSY, PRO 42"
	L54	80272	REAR HOOD ASSY, PRO 54"
11	ALL	20054	HOOD SPACER, ALL PRO SERIES
12	27,30	80259	HOOD LIGHT ASSY, SINGLE W/10W BULB
	36,42,54	80306	HOOD LIGHT ASSY, DUAL W/10W BULB
13	ALL	31979	BULB, REPLACEMENT, 10W HALOGEN
	ALL	32322	GLASS REPLACEMENT COVER W/ CLIP
14	L27	80318	IR PANEL ASSY, PRO 27" 2008
	27 NON-IR	80319	REAR FINISHING PANEL, NON-IR, PRO 27"
	L30	80273	IR PANEL ASSY, 30"
	L36	80274	IR PANEL ASSY, 36"
	L42	80275	IR PANEL ASSY, 42"
	L54	80276	IR PANEL ASSY, 54"
15	L27	10067	BURNER HANGER, PRO 27"
	L30	32484	BURNER HANGER, PRO 30"
	L36	32245	BURNER HANGER, PRO 36"
	L42	32485	BURNER HANGER, PRO 42"
	L54	32486	BURNER HANGER, PRO 54"
16	27,30,54	10159	WOODCHIP TRAY (27", 30", 54")
	36,42	10158	WOODCHIP TRAY (36", 42")
17	ALL	32174	IR IGNITER BRACKET
	L54	32173	IR IGNITER BRACKET, RIGHT, 54"
18	L30	31244	IR IGNITER COVER (30")
	27,36,42,54	10043	IR IGNITER COVER (27", 36", 42", 54")
19	ALL	30781	REGULATOR 4/11 N/G ONLY
	ALL	13053	REGULATOR W/30" HOSE DOUBLE STAGE-LP
20	30,42,54	32743	FIREBOX PARTITION, 30",42",54"
	L36	80308	FIREBOX PARTITION, PRO 36"
21	ALL	90128	ROLLER BEARING KIT-ROTISSERIE (2 KITS PER)
22	ALL	32468	HOOD STOP, ALL PRO
23	ALL	32469	SCREW/HOOD STOP-#8-32 X 1" PH TRUSS HD
24	L27,L36	PRENGK	COMPLETE DRIFICE FIELD KIT-LP TO NG
	L27,L36	PRELPK	COMPLETE DRIFICE FIELD KIT-NG TO LP
	30,42,54	PRONGK	COMPLETE DRIFICE FIELD KIT-LP TO NG
	30,42,54	PRDLPK	COMPLETE DRIFICE FIELD KIT-NG TO LP
	L27,L36	13013	DRIFICE,BURNER, NG (#41 SHORT)
	L27,L36	13019	DRIFICE,BURNER, LP (#53 SHORT)
	30,42,54	30329	DRIFICE,BURNER, NG (#41 LONG)
	30,42,54	30328	DRIFICE,BURNER, LP (#53 LONG)
	PROSEAR	13015	DRIFICE,BURNER, NG (#44 SHORT)
	PROSEAR	13020	DRIFICE,BURNER, LP (#54 SHORT)
	30,36,54	13016	DRIFICE, IR ROTIS., NG (#50 SHORT)
	30,36,54	13021	DRIFICE, IR ROTIS., LP (#57 SHORT)
	L27"	13016	DRIFICE, IR ROTIS., NG (#50 SHORT)
	L27"	13021	DRIFICE, IR ROTIS., LP (#57 SHORT)
	L42"	30470	DRIFICE, IR ROTIS., NG (#48 SHORT)
	L42"	31342	DRIFICE, IR ROTIS., LP (#56 SHORT)
25	ALL	90129	ROLLER BEARING KIT-DRIP PAN (1 KIT PER)
26	30,42,54	90073	SMOKER BOX ASSY 30", 42", 54"
	27,36	90074	SMOKER BOX ASSY, 27", 36"
27	L27	32548	DRIP PAN, PRO 27"
	L30	18050	DRIP PAN, 30"
	L36	31494	DRIP PAN, 36"
	L42	18051	DRIP PAN, 42"
	L54	31324	DRIP PAN, 54"
28	ALL	32172	BATTERY HOLDER
28A	ALL	32209	BATTERY HOLDING CLIP
28B	FREESTANDING	32503	BATTERY/TRANSFORMER MNTG BRACKET F/S
28C	BUILT-IN	32504	BATTERY/TRANSFORMER MNTG BRACKET B/I
29	27 NON-IR	80326	LED HARNESS ASSY, 27" NON-IR
	27 W/IR	80374	LED HARNESS ASSY, 27" (W/IR)
	L30	80236	LED HARNESS ASSY, 30"
	L36	80373	LED HARNESS ASSY, 36"
	L42	80235	LED HARNESS ASSY, 42"
	L54	80237	LED HARNESS ASSY, 54"
	ALL	32554	LED HOLDER
30	ALL	90137	STAINLESS BURNER KNOB, ALL SIZES
31	ALL	90136	STAINLESS IR ROTIS. KNOB, ALL SIZES
	ALL	90139	STAINLESS KNOB KIT (3 BURNER+1 ROTIS)
32	ALL	10001	BEZEL
33	ALL	31929	BEZEL SCREW, #6-32 X 1/8 PH PAN
34	L27	32546	FRONT PANEL, PRO 27"
		32547	FRONT PANEL, NON-IR, PRO 27"
	L30	31670	FRONT PANEL, 30"
		31787	FRONT PANEL, 30" PROSEAR
	L36	31682	FRONT PANEL, 36"
		31789	FRONT PANEL, 36" PROSEAR
	L42	31687	FRONT PANEL, 42"
		31790	FRONT PANEL, 42" PROSEAR
	L54	31691	FRONT PANEL, 54"

ITEM	GRILL SIZE	PART NO.	DESCRIPTION
35	ALL	32169	POWER CONVERTER
36	ALL	32199	LIGHT SWITCH, BLUE LIGHTED, ALL SIZES
37	ALL	31398	IGNITER SHIELD
38	L27	80317	BULLNOSE ASS'Y, PRO 27"
	L30	80261	BULLNOSE ASS'Y, 30"
	L36	80263	BULLNOSE ASS'Y, 36"
	L42	80265	BULLNOSE ASS'Y, 42"
	L54	80268	BULLNOSE ASS'Y, 54"
39	ALL	31772	IR BURNER VALVE W/ MICROSWITCH
40	L30 P/S	31673	GAS DEFLECTOR, 30" PROSEAR
	L36 P/S	31562	GAS DEFLECTOR, 36" PROSEAR
	L42 P/S	31688	GAS DEFLECTOR, 42" PROSEAR
	L54	32457	GAS DEFLECTOR, PRO 54" (PROSEAR)
40A	ALL P/S	14014	SCREW, #8-32 X 3/8 PH TRUSS HD S/S
40B	ALL P/S	14024	NUT, LOCK, #8-32
41	ALL	31794	FLEX HOSE, 9 MM X 38" W/ 7/16 FITTINGS
42	ALL	32846	MAIN BURNER VALVE W/ MICROSWITCH
	ALL	32845	MICROSWITCH REPLACEMENT FOR VALVE
43	L27	80251	MANIFOLD ASS'Y W/VALVES, 27" LP
	L27	80252	MANIFOLD ASS'Y W/VALVES, 27" LP NON IR
	L27	80253	MANIFOLD ASS'Y W/VALVES, 27" NG
	L27	80254	MANIFOLD ASS'Y W/VALVES, 27" NG NON IR
	L30	80211	MANIFOLD ASS'Y W/VALVES, 30" LP PROSEAR
	L30	80212	MANIFOLD ASS'Y W/VALVES, 30" LP
	L30	80213	MANIFOLD ASS'Y W/VALVES, 30" NG PROSEAR
	L30	80214	MANIFOLD ASS'Y W/VALVES, 30" NG
	L36	80227	MANIFOLD ASS'Y W/VALVES, 36" LP PROSEAR
	L36	80228	MANIFOLD ASS'Y W/VALVES, 36" LP
	L36	80229	MANIFOLD ASS'Y W/VALVES, 36" NG PROSEAR
	L36	80230	MANIFOLD ASS'Y W/VALVES, 36" NG
	L42	80201	MANIFOLD ASS'Y W/VALVES, 42" LP PROSEAR
	L42	80202	MANIFOLD ASS'Y W/VALVES, 42" LP
	L42	80203	MANIFOLD ASS'Y W/VALVES, 42" NG PROSEAR
	L42	80204	MANIFOLD ASS'Y W/VALVES, 42" NG
	L54	80220	MANIFOLD ASS'Y W/VALVES, 54" LP PROSEAR
	L54	80221	MANIFOLD ASS'Y W/VALVES, 54" NG PROSEAR
44	27,30	90140	ELECTRODE KIT -2 BURNER, GLOW COIL
	36,42	90141	ELECTRODE KIT -3 BURNER, GLOW COIL
	L54	90142	ELECTRODE KIT -4 BURNER, GLOW COIL
45	30,42,54	30485	H-BURNER (BRASS)
	27,36	11012	H-BURNER (BRASS)
46	PS MODELS	33000	PROSEAR BURNER, 30", 42", 54"
	30,42,54	32242	SCREEN REPLACEMENT, PROSEAR BURNER
	L36	32915	PROSEAR BURNER, SHORT, 36" ONLY
	L36	32243	SCREEN REPLACEMENT, PROSEAR BURNER, 36"
47	30,42,54	80015	BRIQUETTE TRAY, 30", 42", 54"
	30,42,54	80364	COMPLETE TRAY W/ BRIQUETTES & CLIPS
	42,54	80033	BRIQUETTE TRAY, NARROW, 42",54"
	42,54	80365	COMPLETE TRAY W/ BRIQUETTES & CLIPS
	27,36	80232	BRIQUETTE TRAY, 27", 36"
	27,36	80363	COMPLETE TRAY W/ BRIQUETTES & CLIPS
48	ALL	90053	BRIQUETTES, 35 PER BOX
49	ALL	30417	IR ACCESS COVER
50	ALL	14012	SCREW, 1/4-20 X 3/8 PH TRUSS HD, S/S
51	ALL	80258	ROTISSERIE INTERNAL HARNESS
	ALL	31968	ROTISSERIE JACK SOCKET ONLY
52	ALL	80257	LIGHT SWITCH INTERNAL HARNESS + SWITCH
53	ALL	32803	TRANSFORMER, DUAL LEAD
	27 NON-IR	32276	TRANSFORMER, SINGLE LEAD-27" NON-IR
54	ALL	31170	ROTISSERIE EXTERNAL CORD
55	L27	32557	HOOD HANDLE, 27"
	L30	32522	HOOD HANDLE, 30"
	L36	32523	HOOD HANDLE, 36"
	L42	32524	HOOD HANDLE, 42"
	L54	32525	HOOD HANDLE, 54"
56	30,42,54	31874	EXTENSION SPRING, 30", 42", 54"
	27,36	31780	EXTENSION SPRING, 27", 36"
57	ALL	31738	INSULATING BUSHING, HOOD HANDLE
58	ALL	31736	END CAP FOR HOOD HANDLE
59	ALL	31200	HOOD THERMOMETER
60	ALL	14013	PIVOT SCREW, 1/4-20 X 1" HEX DRIVE
	ALL	14009	PIVOT SCREW NUT, HEX, 1/4-20 S/S
	ALL	14026	PIVOT WASHER, SPLIT LOCK, 1/4 S/S
61	L27	32556	SPIT ROD, PRO 27"
	L30	32128	SPIT ROD, 30"
	L36	32129	SPIT ROD, 36"
	L42	32130	SPIT ROD, 42"
	L54	32131	SPIT ROD, 54"
62	ALL	31563	SPIT FORK, HEAVY DUTY, ALL SIZES
63	ALL	32132	FRONT RETAINING BRACKET, WARMING RACK
64	ALL	32133	REAR RETAINING BRACKET, WARMING RACK
65	ALL	32194	LEFT RETAINING BRACKET, WARMING RACK
66	ALL	14014	SCREW #8-32 x 3/8 PH TRUSS HEAD S/S
67	ALL	14024	LOCK NUT, #8-32, S/S
68	ALL	14030	BOLT, HEX HEAD, 1/4-20 X 1/2", S/S
69	ALL	14018	ELECTRODE SCREW-#6-32 X 1/4 PH PAN HD
	ALL	31814	ELECTRODE NUT, HEX, #6-32 S/S
70	30,36,42,54	32534	SCREW, #4-40 X 1/2 PH PAN HEAD, S/S
	L27	31206	SCREW, #6-32 X 1/2 PH PAN HEAD, S/S
71	30,36,42,54	32535	NUT, HEX, #4-40, S/S
	L27	31207	NUT, HEX, #6-32, S/S
72	ALL	31013	SCREW, #8 X 1/2 PH TRUSS HD TYPE 'A'
73	ALL	32190	SCREW, #10-32 X 1-1/4 PH FLAT HD S/S
74	ALL	31031	ALTERNATE LIGHTING DEVICE, MATCH HOLDER