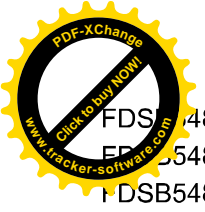
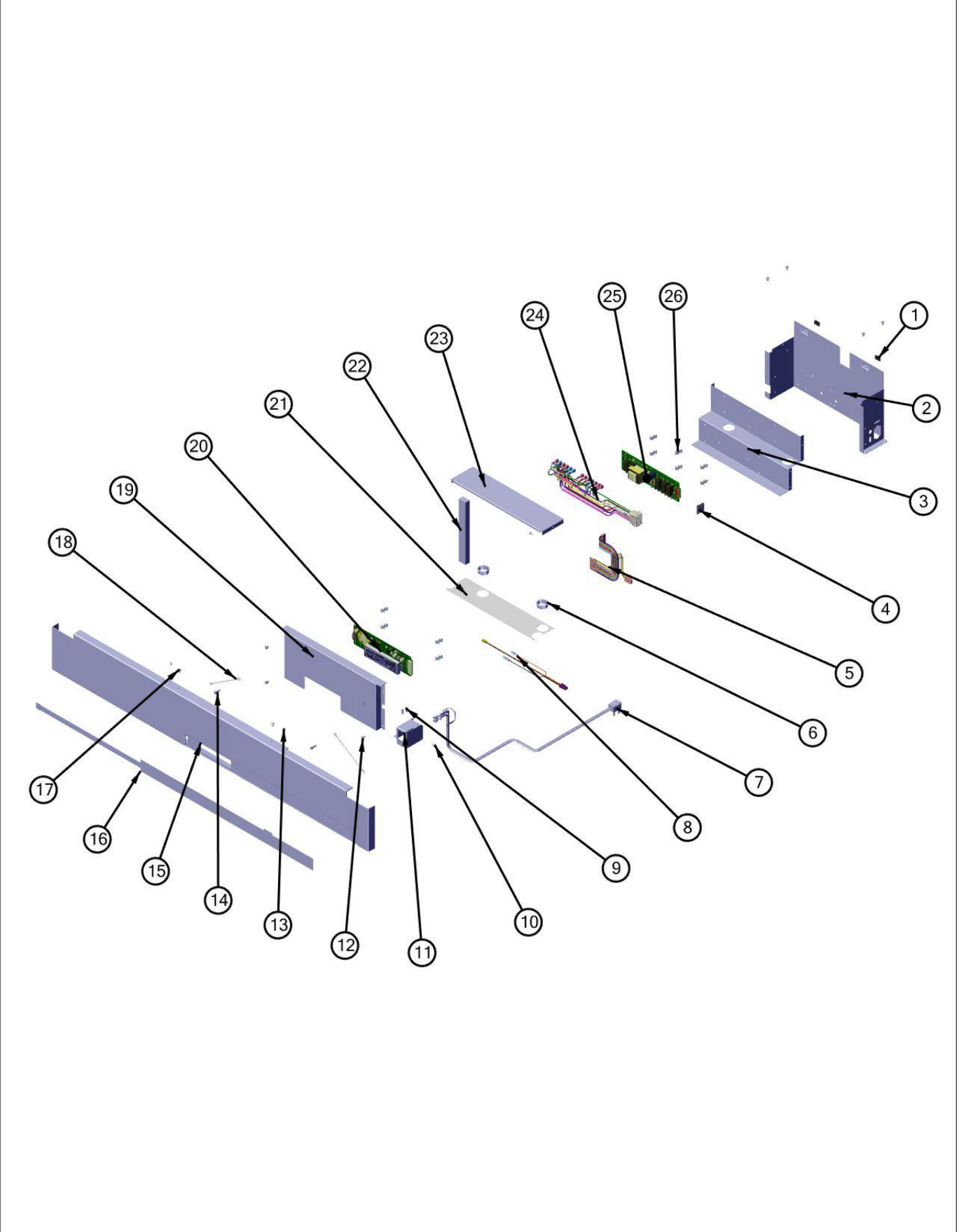


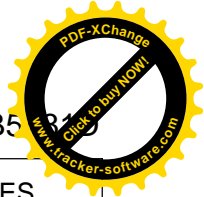
FDSB5481D



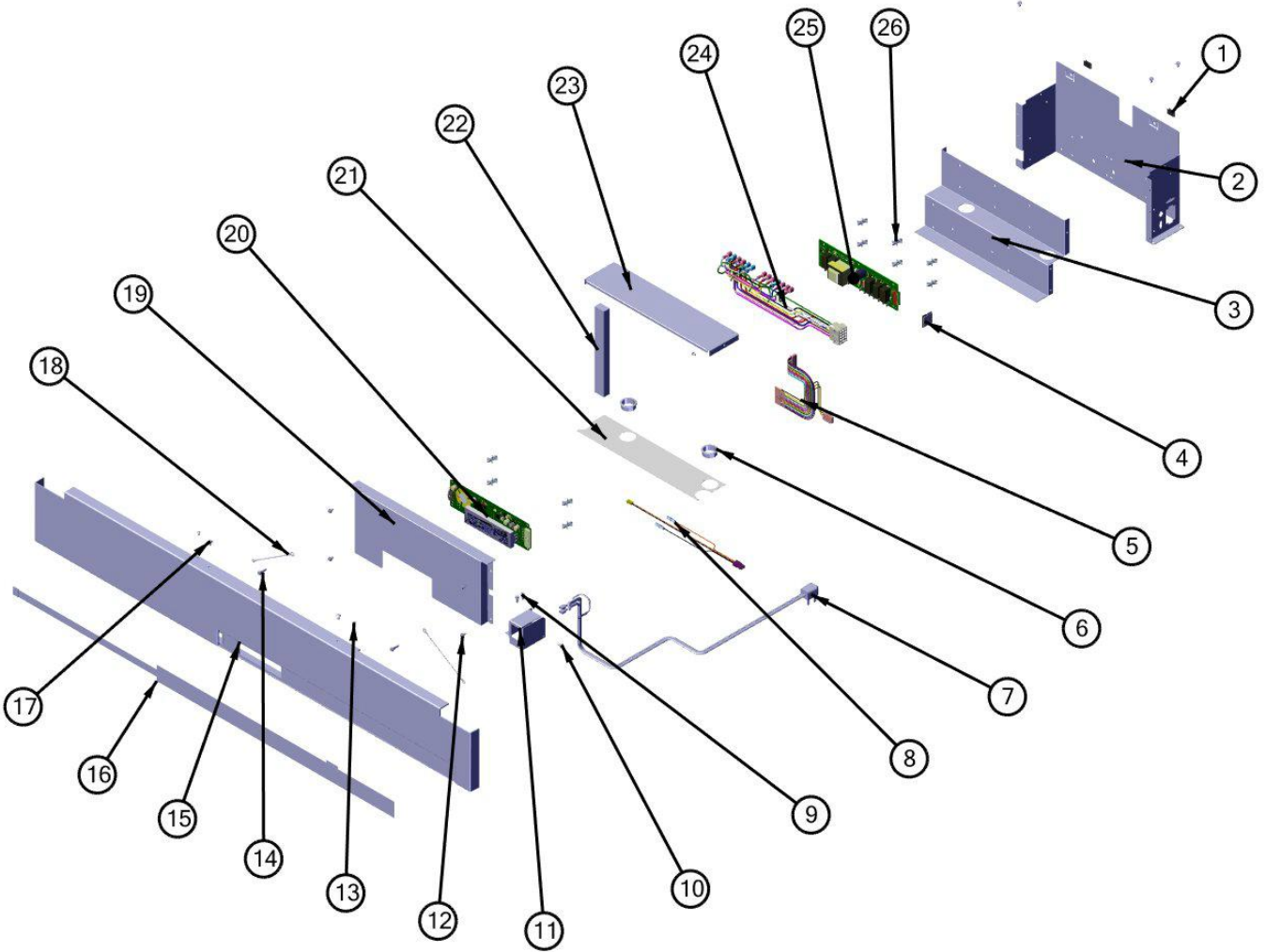
FDSB5481D Controls parts	3
FDSB5481D Refrigerator Door Assy	4
FDSB5481D Freezer Door parts	5
FDSB5481D Upper Grille parts	4
FDSB5481D Refrigerator comp-1	5
FDSB5481D Refrig-comp-2	6
FDSB5481D Freezer comp-1	7
FDSB5481D Freezer compartment-2 parts	8
FDSB5481D Unit top	9
FDSB5481D Unit bottom parts	10
FDSB5481D Decor parts	11
Appendix A:Pages Index	A
Appendix B:Parts Index	B

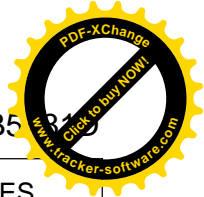
SB5481D Controls parts





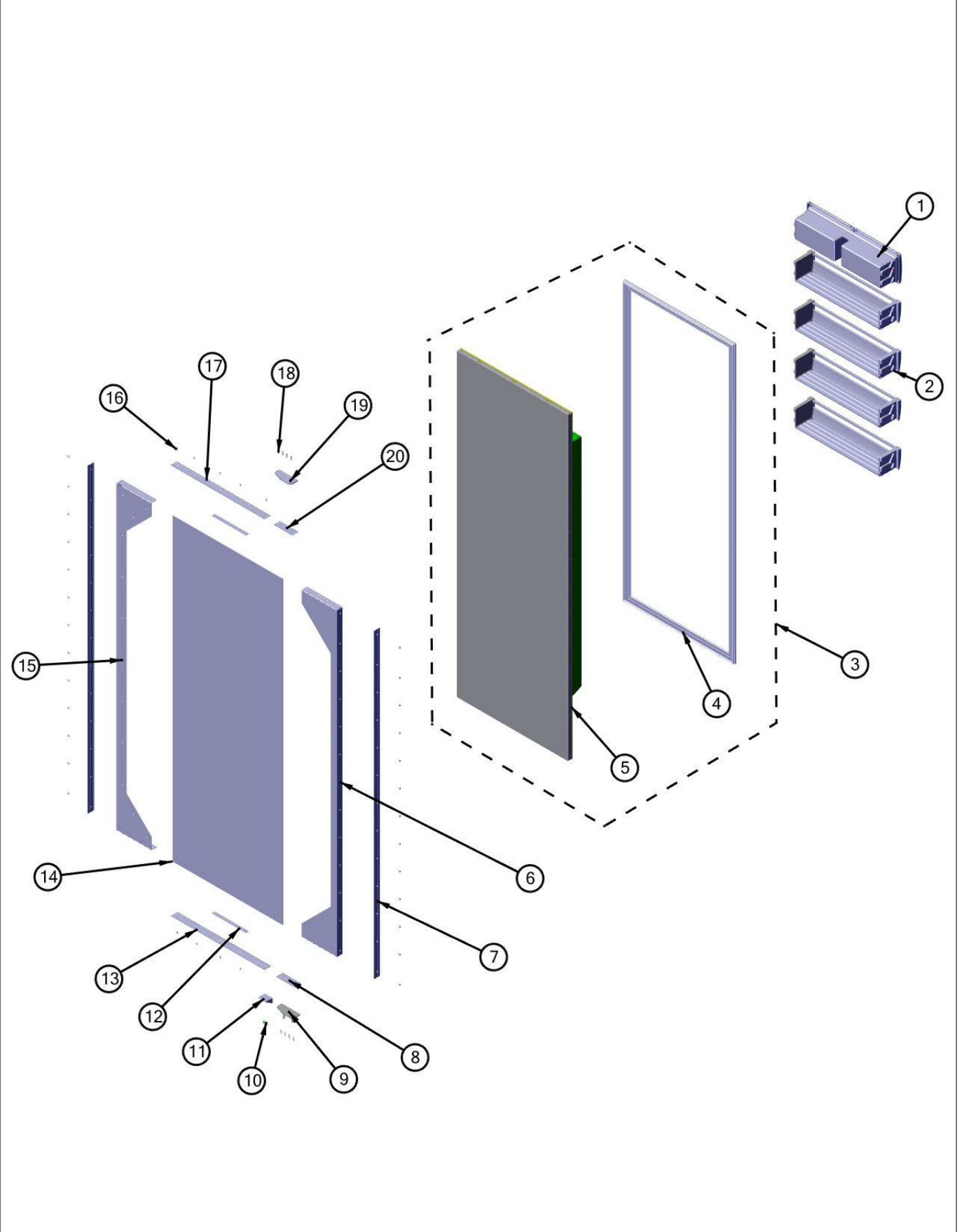
Item	Part No.	Name	Qty	Uom	NOTES
1	M0288120	NUT-SPEED VM0288120	2	EA	
2	047016-000	MOTOR CONTROL BOX	1	EA	Not available online / Call for pricing and availability
3	044479-000	MOTOR BRACKET PCB	1	EA	
4	m0104106	CLIP-CORD VM0104106	1	EA	
5	PE970464	HARNESS LOW VOLT	1	EA	
6	A4554817	BUSHING-SNAP VA4554817	2	EA	
7	10916507	CORD-POWER V10916507	1	EA	
8	PE970609	HARNESS CONTROL BOARD	1	EA	
9	PD020194	SCR, HEX SRTD WSHR HD, #8-18 X 1/2	2	EA	
10	PD020010	10 X 3/8 GREEN GROUNDING SCREW	1	EA	
11	025433-000	BRACKET,SW,POWER	1	EA	
12	PD020193	SCR 8-18 X 3/8	7	EA	
13	PC040010	POP RIVET (.063/GR -.125) GAMD42-A	2	EA	
14	M0238859	SCREW-SHLDR	2	EA	
<p>Comments for Part Num. M0238859</p> <p>karen@knservice.com on Oct 22, 2015</p> <p>the description describes the part as "screw shoulder" but it is the only arrow pointing at the fan motor. the actual shoulder screw has the same part number as the fan blade</p>					
15	016593-000	PANEL CONTROL SXS 48	1	EA	
16	016273-000	OVERLAY,SW,ASM,SXS 48 DISP	1	EA	
17	M0224128	SCREW-SM	2	EA	
18	12064001	SUPP-CONT PANEL	2	EA	
19	016930-000	MOTR CONTROL BOX FRONT	1	EA	
20	017695-000	BOARD LOW VOLTAGE	1	EA	

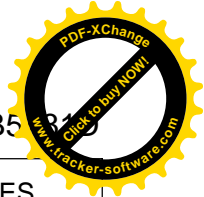




Item	Part No.	Name	Qty	Uom	NOTES
Comments for Part Num. 017695-000					
bradleysapplianceservice@shaw.ca on Apr 21, 2017					
CAUTION WHEN ORDERING PART:					
057309-000 LOW VOLTAGE BOARD WHITE FACE - FOR 2 SERIES AND UP.					
017695-000 LOW VOLTAGE BOARD BLACK FACE - FOR 1 SERIES ONLY.					
21	005396-000	FILM,PROTECTIVE	1	EA	
22	A3030361	GASKET RED	1	EA	
23	K20915000	CONTROL BOX TOP	1	EA	
24	015365-000	HARNESS HIGH VOLT	1	EA	
25	005319-000	HIGH VOLTAGE CONTROL BOARD	1	EA	
26	m0585504	SUPPORT	10	EA	

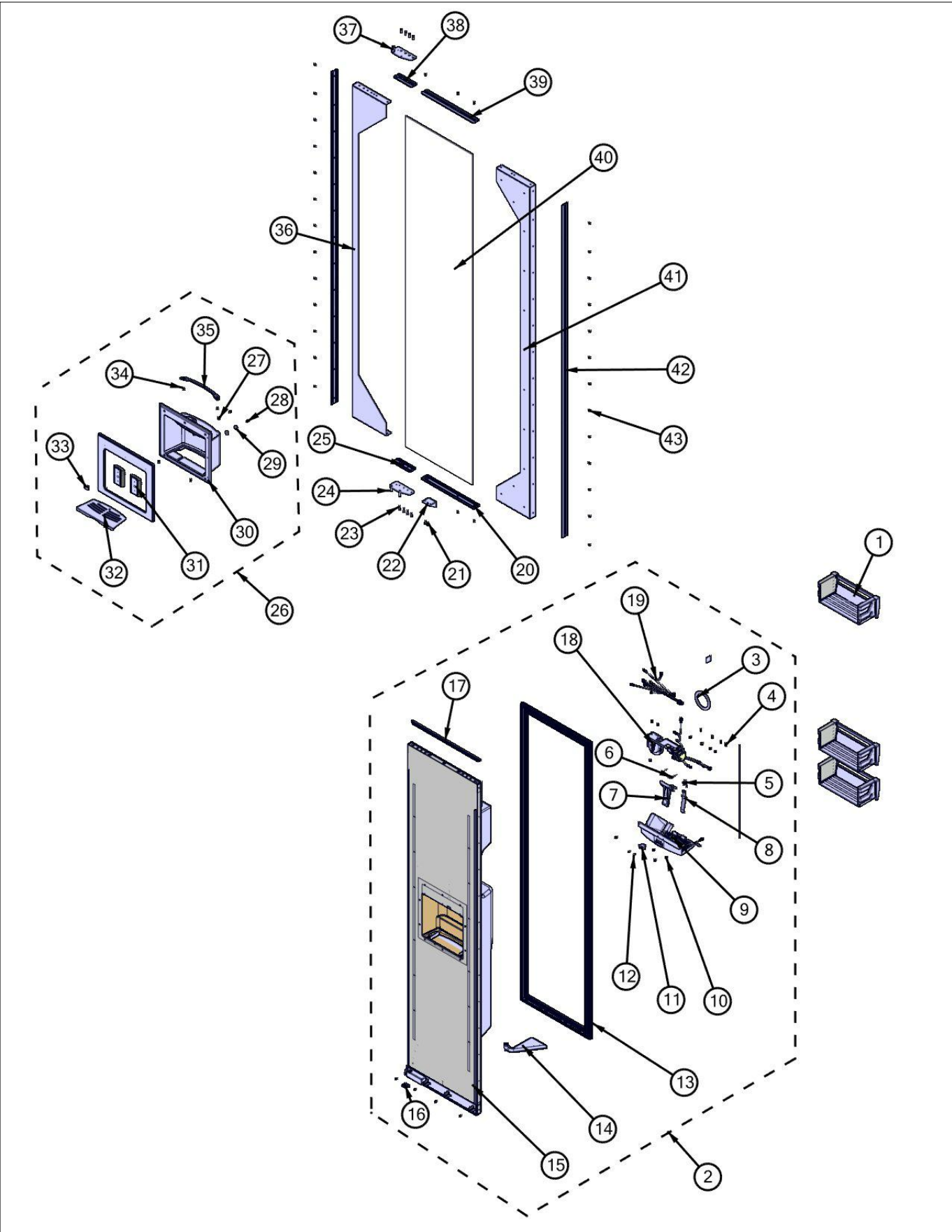
SB5481D Refrigerator Door Assy

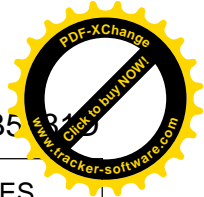




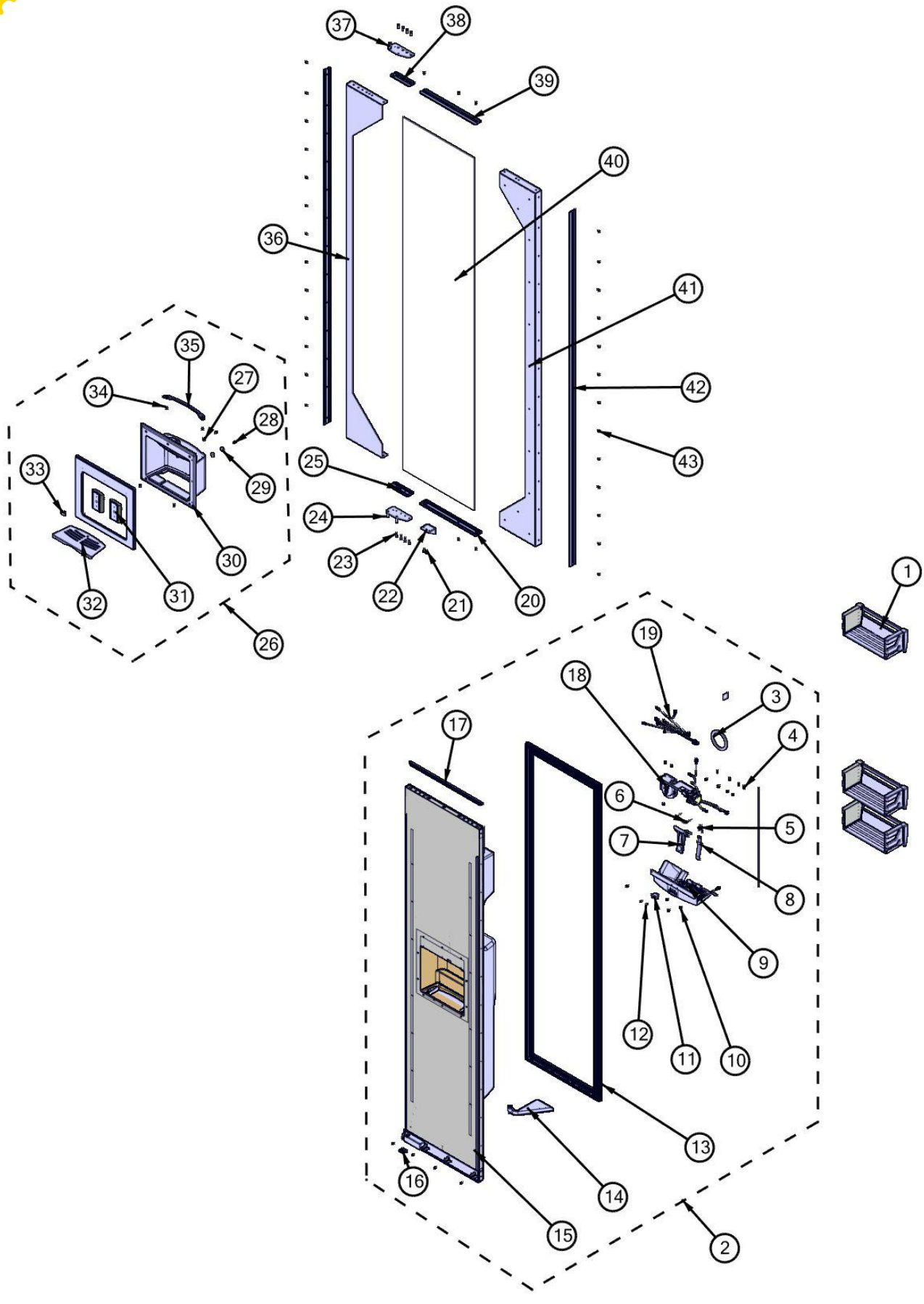
Item	Part No.	Name	Qty	Uom	NOTES
1	V12203602	DAIRY MODULE ASSY #	1	Wholesale Price	
2	036886-000	DOORBIN ASM SXS 48 FF	4	EA	
3	007070-000	DOOR ASM 48/48D FF	1	EA	
4	005454-000	GASKET,ASM,48,SXS,FF VID# 602711907-17	1	EA	
5	007047-000	DOOR FOAM ASM SXS 48 FF	1	EA	
6	007377-000	BRACKET,SIDE,HINGE,FULL OVERLAY	1	EA	
7	000953-000	EXTRUSION,FOL,SIDE	2	EA	
8	034903-000	EXTRUSION, FOL, PIVOT PLATE SPACER, LEFT	1	EA	
9	016179-000	PIVOT PL ASM RH LW FOL	1	EA	
10	M0210458	Screw, SM	2	EA	
11	PD050019	STRIKER DOOR SWITCH	1	EA	
12	008399-000	SPACER,36,30,48FF,FOL	2	EA	
13	004500-000	EXTRUSION,FOL,BOT,48 FF	1	EA	
14	003621-000	SHEET,FOAM,30 AF/AR, 48 FF	1	EA	
15	000950-000	BRACKET,PNL,FULL OVERLAY	1	EA	
16	M0215318	SCREW-SM	35	EA	
17	002297-000	EXTRUSION,FOL,TOP,48 SXS FF	1	EA	
18	PD920174	10X7/8 PHILLIPS SMA TRI LOBE SA	8	EA	
19	033785-000	PIVOT PLATE ASM RH UP FOL SXS, AFAR	1	EA	
20	034902-000	EXTRUSION, FOL, PIVOT PLATE SPACER, RIGHT	1	EA	
NI	006908-000	BRACKET,FOL,Z	1	EA	

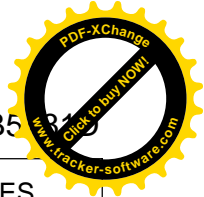
SB5481D Freezer Door parts





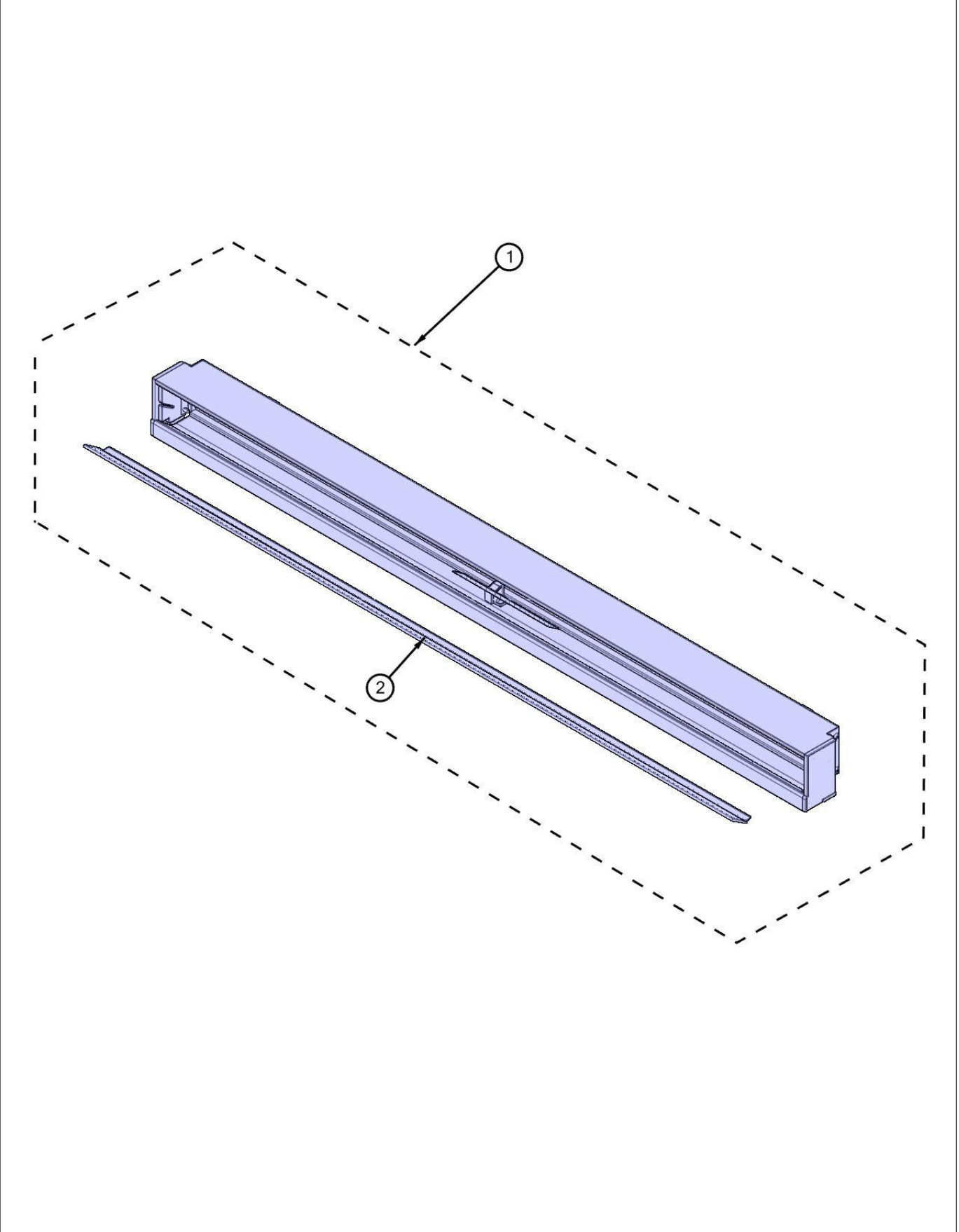
Item	Part No.	Name	Qty	Uom	NOTES
1	036888-000	DOORBIN ASM SXS FZ	3	EA	
2	016261-000	DOOR ASM 48D FZ	1	EA	
3	12193801	GASKET - ICE DR	1	EA	
4	B10910081	DISP RETAINER ICE ARM	4	EA	
5	B8385402	SPRING-RETURN	1	EA	
6	PC010022	SPRING RETURN ICE ACTUATOR	1	EA	
7	PK030470	ARM ICE ACTUATOR	1	EA	
8	pk930404	ARM WATER ACTUATOR	1	EA	
9	PE070755	DISPENSER CAVITY ASSEMBLY	1	EA	
10	PD020193	SCR 8-18 X 3/8	11	EA	
11	PE950152	SWITCH SLIDE	1	EA	
12	003334-000	SCREW, NO.4-24 X 1/2	2	EA	
13	005456-000	GASKET, ASM , 48, SXS, FZ, DISP	1	EA	
14	PK930297	ELBOW CHASE SXS DISP	1	EA	
15	N/P	DOOR FOAM ASM 48D FZ	1	EA	
Not Shown	NOTE	MUST ORDER PART NUMBER 016261-000		EA	
16	PK930298	RETAINER ELBOW 42 SXS DISP	1	EA	
17	PK030566	EXTR DR GASKET 48 FZ TOP VID# 234830565-17	1	EA	
18	G50914155	ICE DISPENSER MODULE ASM	1	EA	
19	042300-000	HARNESS JUMPER DISP CAVITY	1	EA	
20	004501-000	EXTRUSION,FOL,BOT,48 FZ	1	EA	
21	M0210458	Screw, SM	2	EA	
22	PD050019	STRIKER DOOR SWITCH	1	EA	
23	PD920174	10X7/8 PHILLIPS SMA TRI LOBE SA	8	EA	
24	016180-000	PIVOT PL ASM LH LW FOL	1	EA	
25	034902-000	EXTRUSION, FOL, PIVOT PLATE SPACER, RIGHT	1	EA	
26	015163-000	BEZEL ASM (FOL)	1	EA	
27	PD040071	#10 S.S. FLAT WASHER	1	EA	





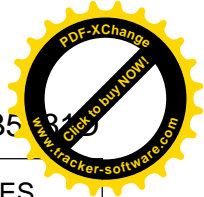
Item	Part No.	Name	Qty	Uom	NOTES
28	M0210443	SCREW-E SM VM0210443	2	EA	
29	M0270546	WASHER	2	EA	
30	015164-000	OVERLAY, BEZEL, FOL ASM	1	EA	
31	009631-000	PAD ACTUATOR	2	EA	
32	013688-000	TRAY, SPILL, I/W DISP, PRO, DF 42D&48D	1	EA	
33	013685-000	CAP, SWITCH	1	EA	
34	M0215318	SCREW-SM	9	EA	
35	036580-000	STOP, E FACADE	1	EA	
36	007377-000	BRACKET, SIDE, HINGE, FULL OVERLAY	1	EA	
37	031379-000	PIVOT PLATE ASM LH UP FOL SXS, AFAR	1	EA	
38	034903-000	EXTRUSION, FOL, PIVOT PLATE SPACER, LEFT	1	EA	
39	002301-000	EXTRUSION, FOL, TOP, 48 SXS FZ	1	EA	
40	003620-000	SHEET, FOAM, 42/48 FZ	1	EA	
41	000950-000	BRACKET, PNL, FULL OVERLAY	1	EA	
42	000953-000	EXTRUSION, FOL, SIDE	2	EA	
43	M0215318	SCREW-SM	31	EA	
NI	042336-000	HARNESS SXS DISP DOOR	1	EA	
NI	006908-000	BRACKET, FOL, Z	1	EA	

SB5481D Upper Grille parts



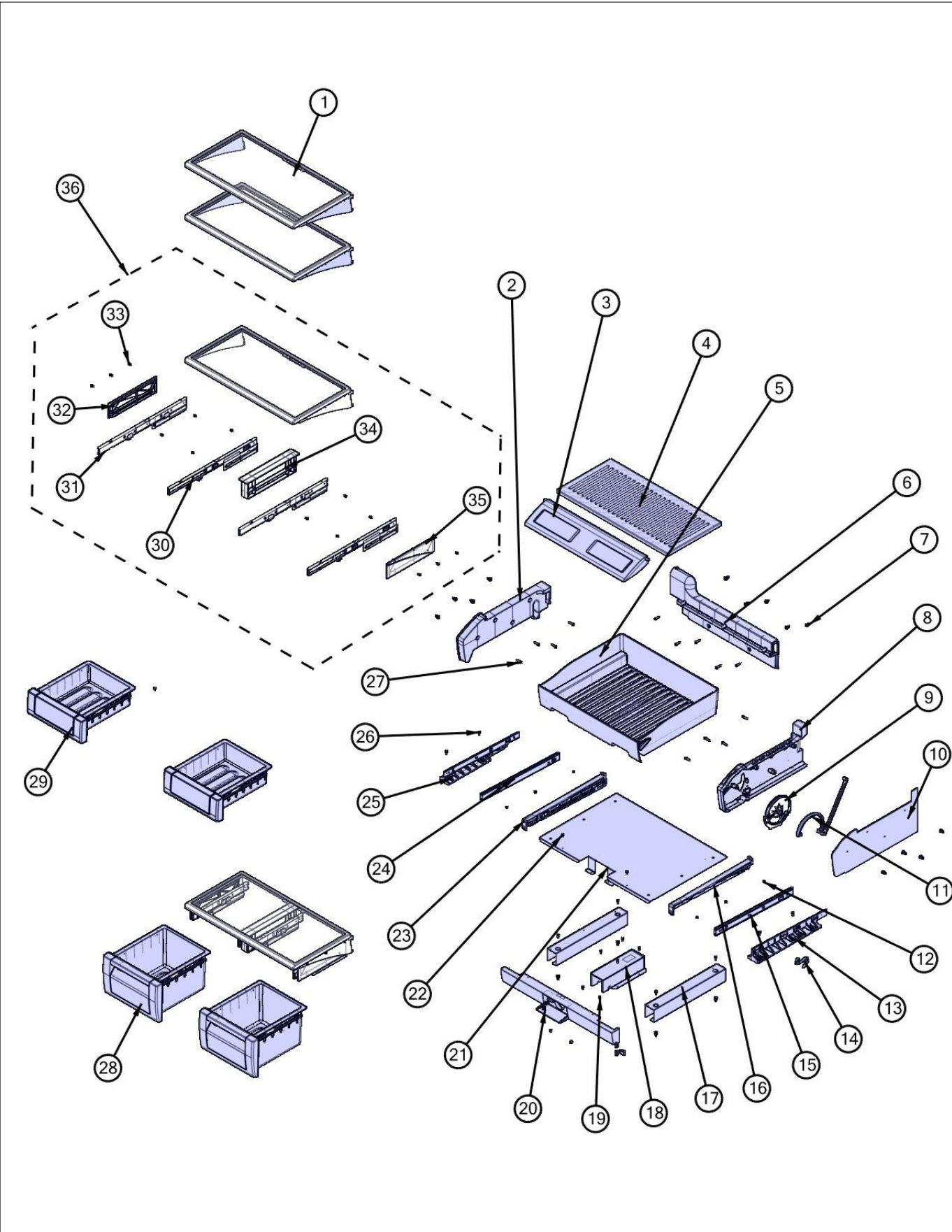


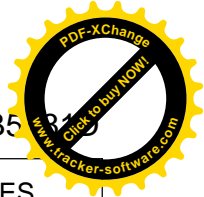
FDSB5



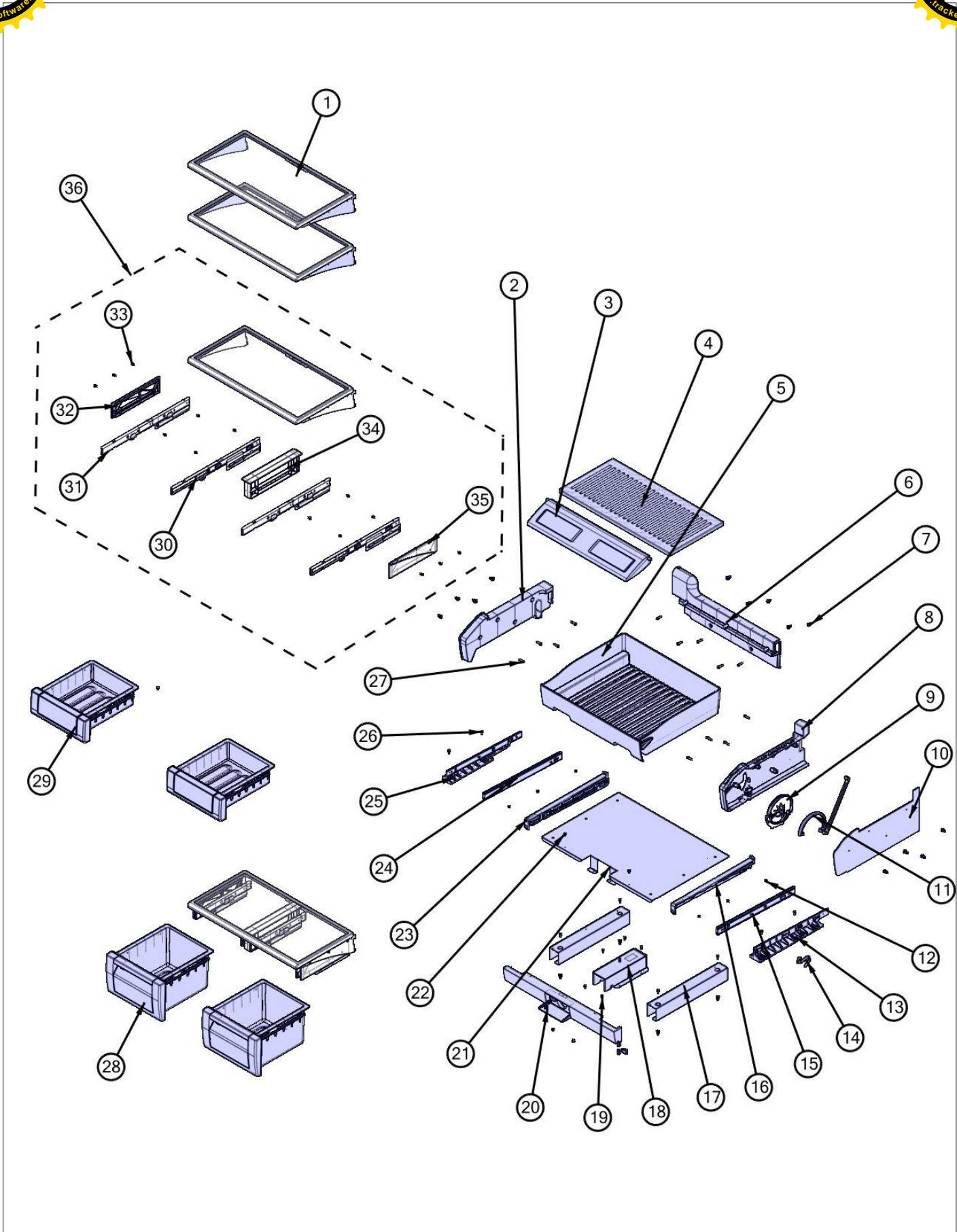
Item	Part No.	Name	Qty	Uom	NOTES
1	034755-000	GRILLE, ASM, 48 SXS, FOL	1	EA	
2	PM910365	GRILLE CENTER SXS 48 DES	1	EA	

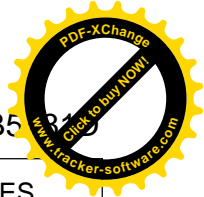
SB5481D Refrigerator comp-1





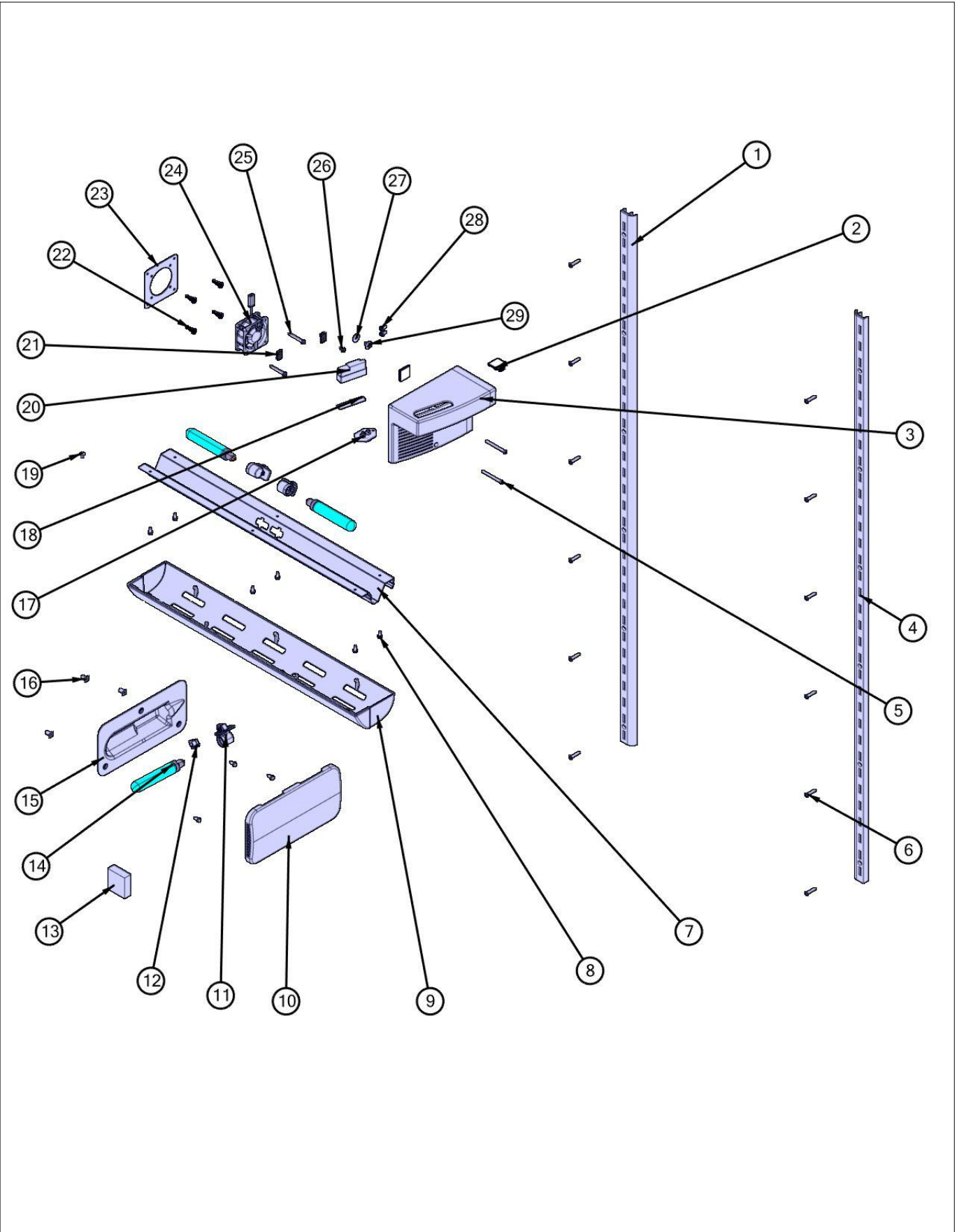
Item	Part No.	Name	Qty	Uom	NOTES
1	043624-000	SHELF ASM GLASS 30 AR 48 FF	2	EA	
2	PK030435	DUCT MEATSAVOR SXS 48 LEFT	1	EA	
3	045692-000	DOOR MEATSAVOR ASM AR 30 SXS 48	1	EA	
4	PK930308	SHELF MEAT SAVOR AR 30 SXS 48	1	EA	
5	PK930309	DRAWER MEAT SAVOR AR 30 SXS 48	1	EA	
6	PK930327	DUCT MEATSAVOR SXS 48 REAR	1	EA	
7	M0581001	GROMMET-SCREW VM0581001	17	EA	
8	044232-000	DUCT MEAT SAVOR (R)	1	EA	
9	044384-000	DIAL CONTROL MEAT SAVOR	1	EA	
10	PK930283	DUCT MEATSAVOR SPACER	1	EA	
11	044385-000	COVER CONTROL MEATSAVER	1	EA	Not available online / Call for pricing and availability
12	PD920162	SCR 8-16 PLASTITE PNP 1/4 S	6	EA	
13	PK930173	SUPPORT SLIDE MEAT SAVOR SXS 42/48 R	1	EA	
14	PM910334	ROLLER TENSION	1	EA	
15	PM910287	SLIDE MEAT SAVOR R	1	EA	
16	PK930175	SUPPORT DRAWER MEAT SAVOR SXS 42/48 R	1	EA	
17	K20913096	BRACKET FALSE FLOOR	2	EA	
18	G50913708	ASM COVER WATER FILTER - NLA	1	EA	
19	PD020194	SCR, HEX SRTD WSHR HD, #8- 18 X 1/2	6	EA	
20	021192-000	FALSE FRONT ASM SXS 48 D	1	EA	Not available online / Call for pricing and availability
21	L20913095	FLOOR-FALSE	1	EA	
22	PD020032	SRW-8(A)X3/8PH.WFR HD 7/16DIA NICL	4	EA	
23	PK930176	SUPPORT DRAWER MEAT SAVOR 42/48 L	1	EA	

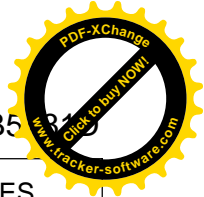




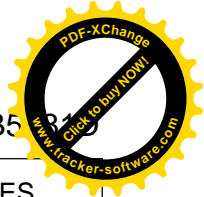
Item	Part No.	Name	Qty	Uom	NOTES
24	PM910288	SLIDE MEAT SAVOR L	1	EA	
Comments for Part Num. PM910288					
profixappliances@gmail.com on May 3, 2017					
ITEM # 5 SHOULD BE PK930288-DOOR MEATSAVOR ASM AR/BM 36					
25	PK930174	SUPPORT SLIDE MEAT SAVOR SXS 42/48 L	1	EA	
26	PD020195	SCR 8-18 X 5/8	8	EA	
27	M0211021	SCREW-SM	13	EA	
28	012259-000	DRAWER PRODUCE ASM AR 30/48	2	EA	
29	G32911938	DRAWER DELI ASM SXS 48 AR 30	2	EA	
30	046235-000	SLIDE, DWR, SOFT CLOSE - RH	2	EA	
31	046255-000	SLIDE, DWR, SOFT CLOSE - LH	2	EA	
32	044219-000	SUPPORT SLIDE L (See PK930291)	1	EA	
33	PD920161	SCR 8-16 PLASTITE PNP 3/8 S	14	EA	
34	PK030439	GLIDE CENTER SUPPORT AR 36	1	EA	
35	044214-000	SUPPORT SLIDE R (See PK930290)	1	EA	
36	G50911937	SHELF ASM	2	EA	
NI	A3189368	GASKET-FOAM VA3189368	1	EA	

SB5481D Refrig-comp-2



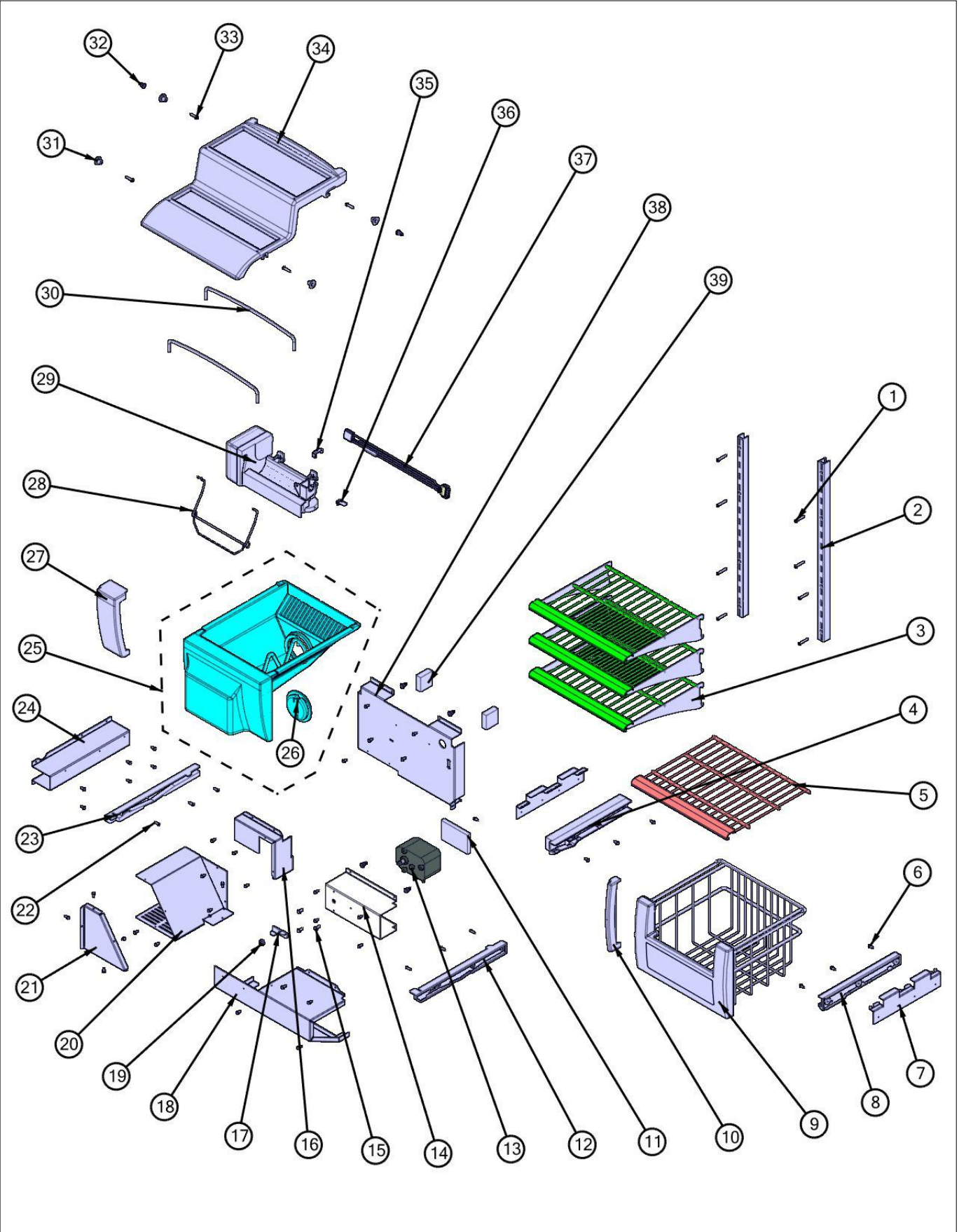


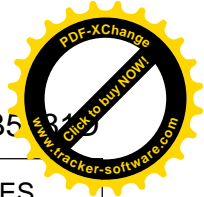
Item	Part No.	Name	Qty	Uom	NOTES
1	PK020079	LADDER FF L SXS 42D/48D	1	EA	
2	m0104106	CLIP-CORD VM0104106	2	EA	
3	043893-000	COVER, FAN, FF, SXS	1	EA	
4	PM910227	LADDER RS REF	1	EA	
5	M0221913	SCREW-SM	2	EA	
6	013397-000	1" PAINTED LADDER SCREW	12	EA	
7	L2099492	BRACKET LIGHT SXS 48 FF	1	EA	
8	PD020194	SCR, HEX SRTD WSHR HD, #8-18 X 1/2	9	EA	
9	020114-000	COVER LIGHT ASM AF/AR 30 SXS 48 FF	1	EA	
10	PK930346	COVER LIGHT	1	EA	
11	PE950125	LIGHT SOCKET	3	EA	
12	023079-000	CLIP GROUND	1	EA	Not available online / Call for pricing and availability
13	PB970176	GASKET UPPER EVAP COVER	1	EA	Not available online / Call for pricing and availability
14	004528-000	LAMP, 40 WATT BLUE LIGHT	3	EA	
15	10270203	HOUSING-LIGHT V10270203	1	EA	
16	M0580007	GROMMET-SCREW	3	EA	
17	C8983701	THERMISTOR	1	EA	
18	014399-000	TAPE,FOAM,DBL SIDED	1	EA	Not available online / Call for pricing and availability
19	M0224128	SCREW-SM	1	EA	
20	010093-000	PLASMA CLUSTER	1	EA	
21	M0288120	NUT-SPEED VM0288120	2	EA	
22	007301-000	GROMMET,RUBBER	4	EA	
23	007302-000	BRACKET,FAN	1	EA	
24	004551-000	AXIAL FAN	1	EA	



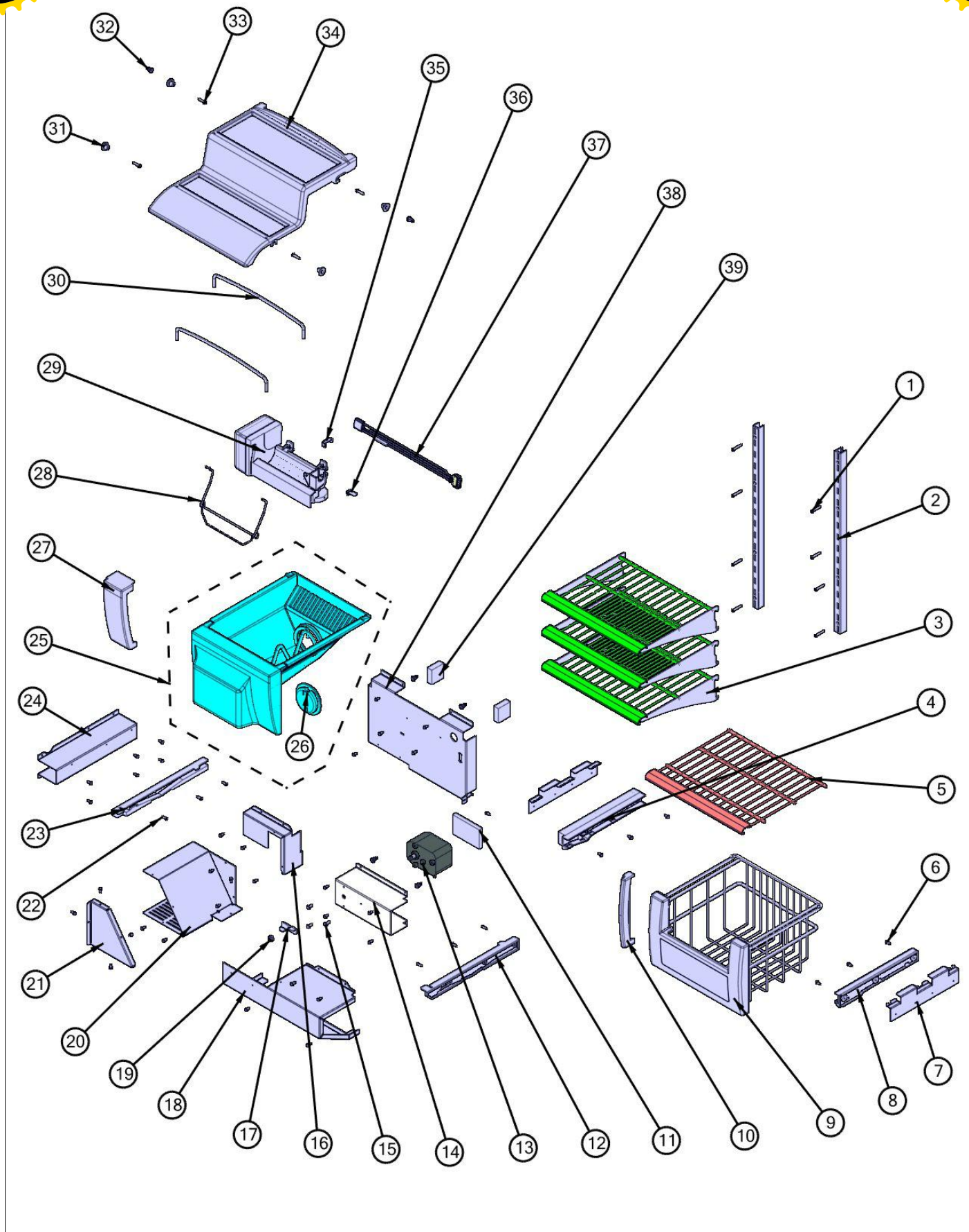
Item	Part No.	Name	Qty	Uom	NOTES
Comments for Part Num. 004551-000					
gboltz@VikingRange.com on Jul 21, 2016					
View service bulletin TR-0052-SP before ordering fan, if applicable order kit instead of fan					
25	PD020188	SCR 8-18 BT HXWS 1 1/2	2	EA	
26	M0232929	SCREW-SE	1	EA	
27	M0270528	WASHER	1	EA	Not available online / Call for pricing and availability
28	PD020010	10 X 3/8 GREEN GROUNDING SCREW	2	EA	
29	12102501	RET-HARNESS	1	EA	
NI	M0321202	TIE-ELEC	1	EA	
NI	011059-000	HARNESS, JUMPER	1	EA	Not available online / Call for pricing and availability

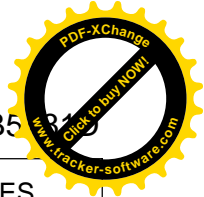
SB5481D Freezer comp-1



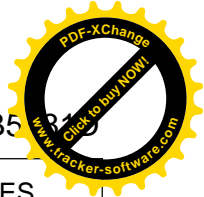


Item	Part No.	Name	Qty	Uom	NOTES
1	M0238535	SCREW-SM	8	EA	
2	PM910375	LADDER R/L FZ	2	EA	
3	PM910411	SHELF WIRE AF 36	3	EA	
4	PK930075	GLIDE SXS 48 FZ L	1	EA	
5	PM910231	FZ FIXED BASKET ASSEMBLY	1	EA	
6	PD020194	SCR, HEX SRTD WSHR HD, #8-18 X 1/2	38	EA	
7	L20910067	BRACKET SHELF FZ	2	EA	
8	PK930074	GLIDE SXS 48 FZ R	1	EA	
9	PM910190	BASKET ASM FZ	1	EA	
10	PK930107	FZ BASKET SIDE SPACER FRONT	1	EA	Not available online / Call for pricing and availability
11	PM010540	FOAM-SPACER	1	EA	Not available online / Call for pricing and availability
12	PK930265	GLIDE R FZ	1	EA	
13	PE950158	MOTOR AUGER	1	EA	
14	C90910713WH	BRACKET AUGER MOTOR	1	EA	
15	PD020191	SCR. #10 PLAS HXW 1/2 S	3	EA	
16	L2098027	DUCT - EVAP FAN	1	EA	
17	B20911863	DRIVER - ICE BUCKET RNG	1	EA	
18	L20910056	COVER EVAP MOTOR	1	EA	
19	M0223101	NUT LOCKING	1	EA	
20	L20910074	TRAN EVAP FAN	1	EA	
21	L20910075	COVER EVAP FAN	1	EA	
22	M0213503	SCREW, SM	6	EA	
23	PK930266	GLIDE L FZ	1	EA	
24	C90910067WH	BRACKET SHELF FZ	1	EA	Not available online / Call for pricing and availability
25	019144-000	ICE BUCKET ASSY	1	EA	

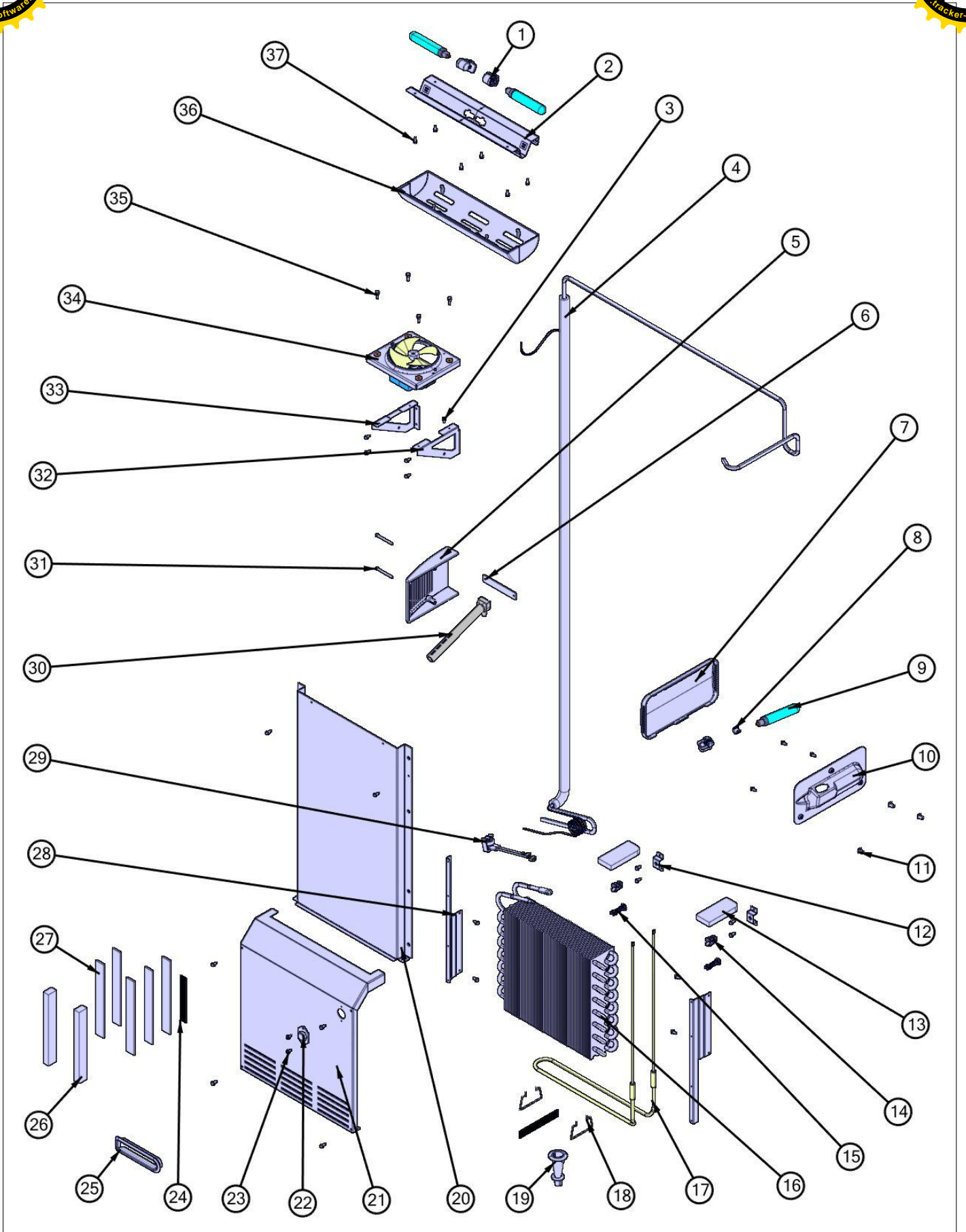


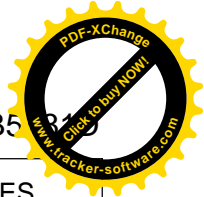


Item	Part No.	Name	Qty	Uom	NOTES
Comments for Part Num. 019144-000					
gboltz@VikingRange.com on Mar 28, 2017					
See parts bulletin 2017-03P ice bucket helix replacement					
26	PM910331C	CAP,HELIX	1	EA	
27	PK930096	CLOSEOUT - ICE DISPENSER	1	EA	
28	038762-000	IM ARM/WIRE ASM	1	EA	
29	057731-000	ICEMAKER	1	EA	
30	PM910435	RETAINER WIRE	2	EA	
31	12258501	SUPPORT-SHELF	4	EA	
32	M0581001	GROMMET-SCREW VM0581001	6	EA	
33	M0211021	SCREW-SM	4	EA	
34	PK930264	SHELF COVER	1	EA	
35	10526701	CLAMP-WIRE V10526701	1	EA	
36	PD030155	CLIP-IM FILL CUP	1	EA	
37	023112-000	HARNESS,ICE MAKER	1	EA	
38	C90910058WH	COVER UPPER EVAP	1	EA	
39	PB970176	GASKET UPPER EVAP COVER	2	EA	Not available online / Call for pricing and availability
NI	M0321202	TIE-ELEC	1	EA	



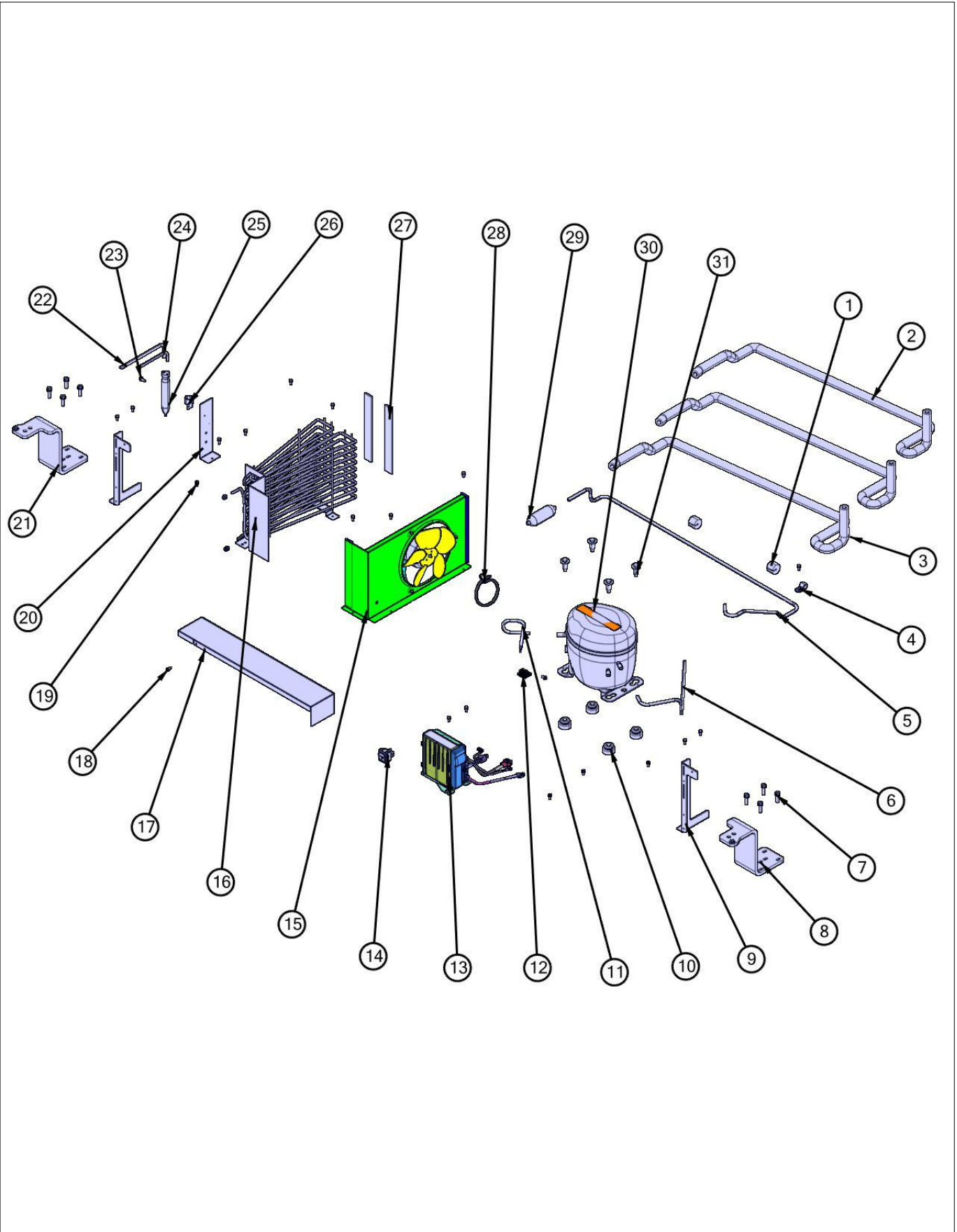
Item	Part No.	Name	Qty	Uom	NOTES
1	PE950125	LIGHT SOCKET	3	EA	
2	L2099475	BRACKET LIGHT SXS FZ	1	EA	
3	PD020010	10 X 3/8 GREEN GROUNDING SCREW	1	EA	
4	F20910021	HEAT EXCHANGER ASM SXS 48	1	EA	
Comments for Part Num. F20910021					
profixappliances@gmail.com on Sep 7, 2016					
SUBS TO PB920155					
5	PK930086	COVER FAN SXS 48 FZ	1	EA	
6	010169-00	IM FILL TUBE BRACKET	1	EA	Not available online / Call for pricing and availability
7	PK930346	COVER LIGHT	1	EA	
8	023079-000	CLIP GROUND	1	EA	Not available online / Call for pricing and availability
9	004528-000	LAMP, 40 WATT BLUE LIGHT	3	EA	
10	10270203	HOUSING-LIGHT V10270203	1	EA	
11	M0580007	GROMMET-SCREW	3	EA	
12	K2096456	BRKT-EVAP CLIP 12215101	2	EA	Not available online / Call for pricing and availability
13	10629001	BLOCK-R AIR COIL RED	2	EA	
14	10623003	CLIP-EVAP	2	EA	
15	10527401	CLIP-EVAP	2	EA	
16	PM910206	EVAPORATOR SXS 48	1	EA	
17	PJ910031	HEATER EVAP SXS	1	EA	
18	10428101	CLIP-EVAP HTR V10428101	2	EA	
19	PK030540	DRAIN TUBE SXS's & 36BM	1	EA	
20	L20910057	COVER CENTER EVAP	1	EA	
21	L20910054	COVER LOWER EVAP	1	EA	
22	C8983701	THERMISTOR	1	EA	
23	M0253916	SCREW-TF	2	EA	

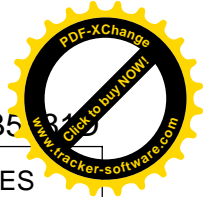




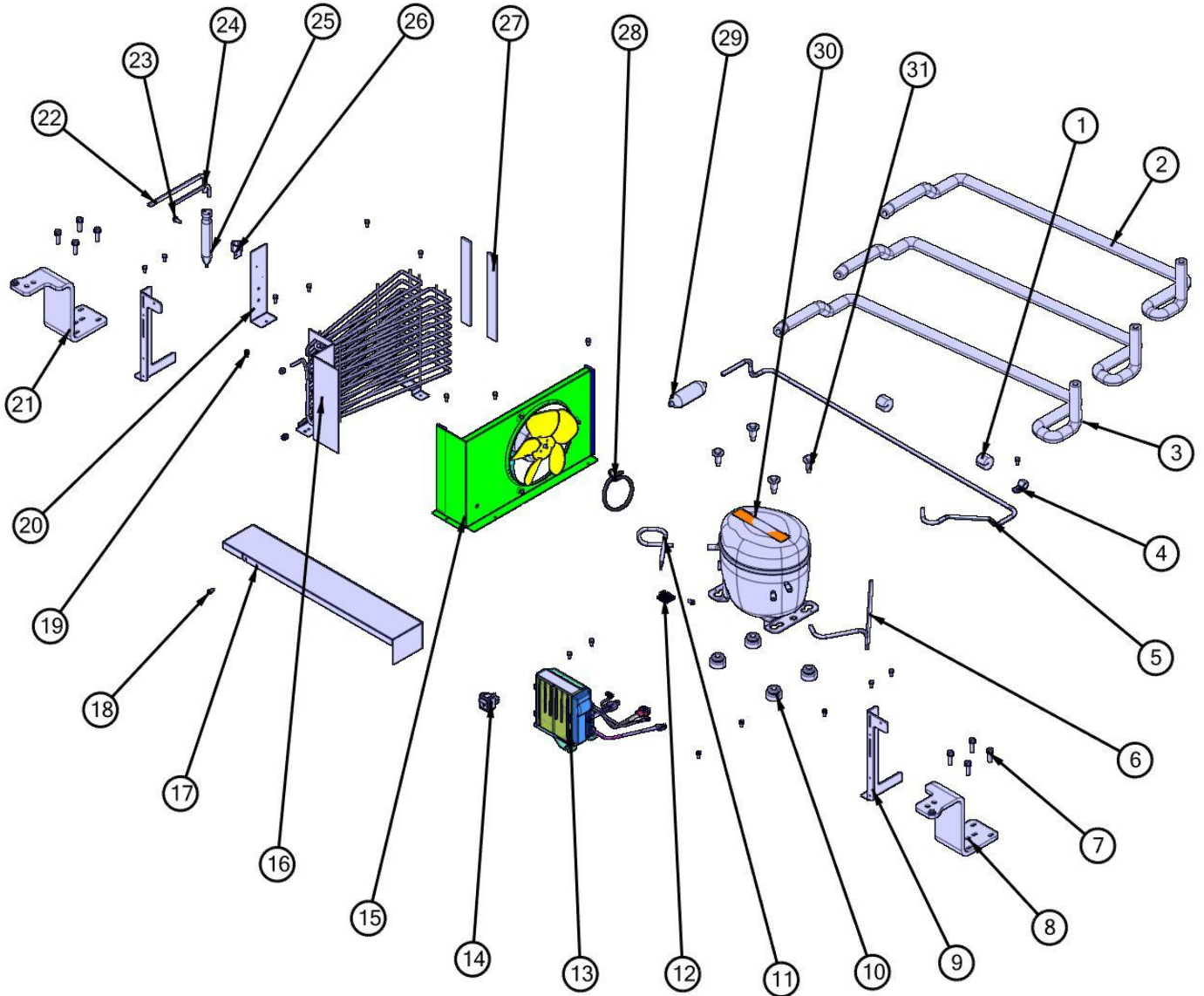
Item	Part No.	Name	Qty	Uom	NOTES
24	M0275196	TAPE-ELEC SL1	2	EA	Not available online / Call for pricing and availability
25	pk930299	COLLAR SLEEVE SXS DISP	1	EA	
26	A3030361	GASKET RED	2	EA	
27	a3189370	GASKET-FOAM VA3189370	5	EA	
28	K2096461	BRKT-EVAP COVER 12234801	2	EA	
29	058966-000	Defrost Terminator	1	EA	
30	029418-000	FILL TUBE DISP	1	EA	
31	M0221913	SCREW-SM	2	EA	
32	K2096457	BRKT-R-EVAP FAN 12223101	1	EA	
33	K2096458	BRKT-L-EVAP-FAN 12223102	1	EA	
34	G5098660	FAN EVAP ASM PANASONIC	1	EA	
35	M0238859	SCREW-SHLDR	4	EA	
<p>Comments for Part Num. M0238859</p> <p>karen@knservice.com on Oct 22, 2015</p> <p>the description describes the part as "screw shoulder" but it is the only arrow pointing at the fan motor. the actual shoulder screw has the same part number as the fan blade</p>					
36	020117-000	COVER LIGHT ASM SXS 42 FZ	1	EA	
37	PD020194	SCR, HEX SRTD WSHR HD, #8-18 X 1/2	27	EA	
NI	A3030303	GASKET-FOAM VA3189348	1FT	EA	
NI	A3189348	GASKET-FOAM VA3189348	2	EA	

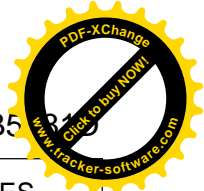
SB5481D Unit top





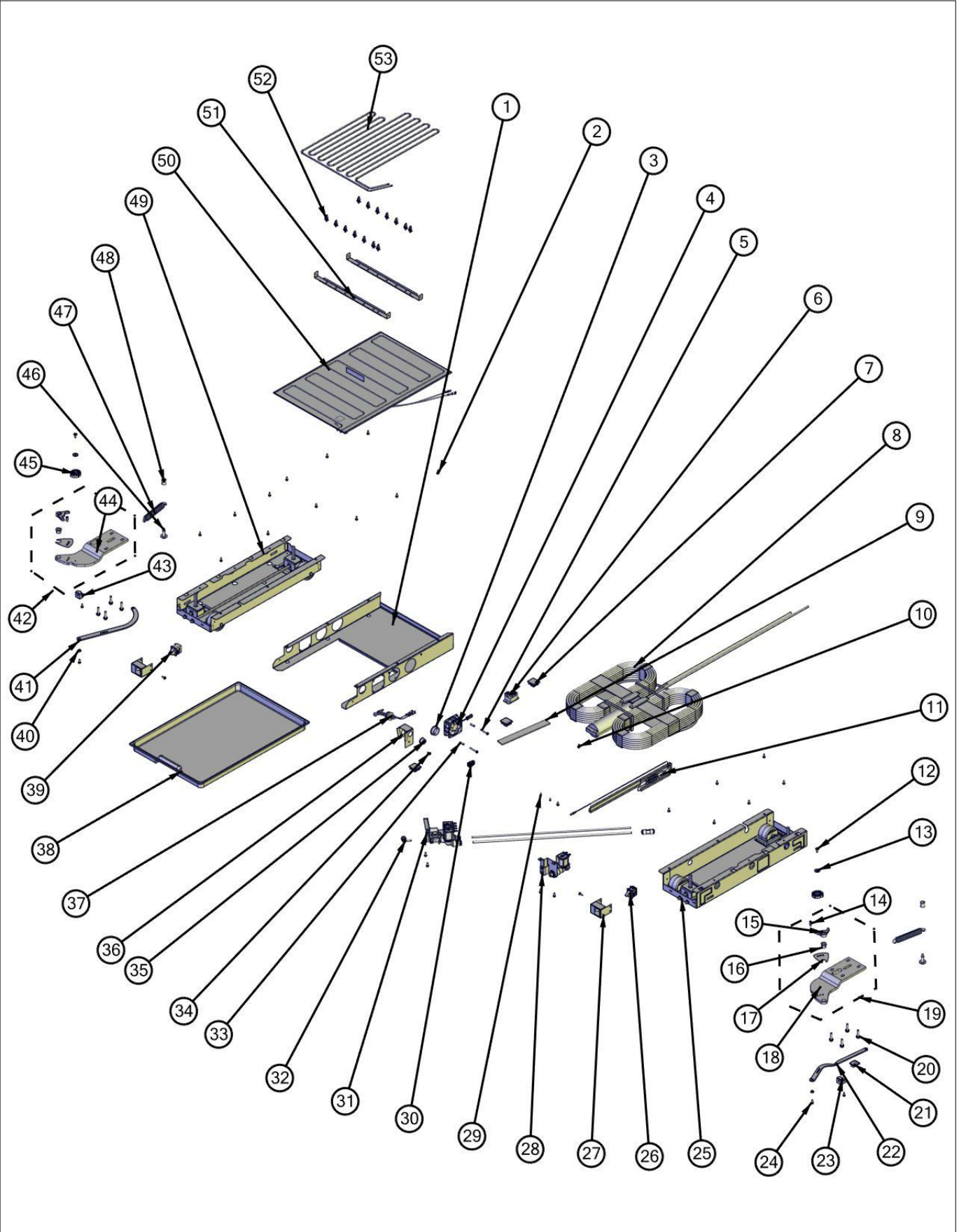
Item	Part No.	Name	Qty	Uom	NOTES
1	10699601	DAMPER-TUBING .8	2	EA	
2	PB970187	INSULATION TUBING 57.500	1	EA	
3	PB970188	INSULATION TUBING 45.000	2	EA	
4	pd030118	INSULATED CLAMP	1	EA	Not available online / Call for pricing and availability
5	F2099443	TUBE DISCHARGE FORMED PRE ACCUM	1	EA	
6	F2099444	TUBE DISCHARGE FORMED POST ACCUM	1	EA	
7	000570-000	FASTENER, BOLT, 1/4-20 IHXWS 1" S ZN SER	8	EA	
8	PC920203	HINGE ASM UR	1	EA	
9	014190-000	BRACKET, GRILLE SUPPORT	2	EA	
10	10835901	GROMMET RUBBER V10835901	4	EA	
11	f2096507	TUBE-PROCESS GRN	1	EA	
12	m0104106	CLIP-CORD VM0104106	1	EA	
13	011666-000	INVERTER,CMPR,ASM	1	EA	
14	PE950149	SWITCH POWER	1	EA	
15	g5096494	COND. FAN ASSY	1	EA	
16	PB920171	CONDENSER ASM	1	EA	
17	014519-000	DIVERTER AIR HI SIDE SXS	1	EA	
18	PD020194	SCR, HEX SRTD WSHR HD, #8-18 X 1/2	14	EA	
19	PD020010	10 X 3/8 GREEN GROUNDING SCREW	5	EA	
20	K2099454	BRACKET DRIER	1	EA	Not available online / Call for pricing and availability
21	PC920204	HINGE ASM UL	1	EA	
22	f2097740	TUBE PROCESS	1	EA	
23	PD020195	SCR 8-18 X 5/8	2	EA	
24	F2096504	TUBE-DRIER EXT	1	EA	
25	PM010616	DRIER - HIGH SIDE	1	EA	
26	10547001	CLIP-DRIER V10547001	1	EA	
27	a3189370	GASKET-FOAM VA3189370	2	EA	

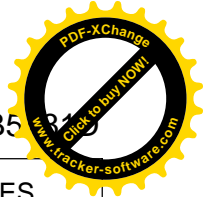




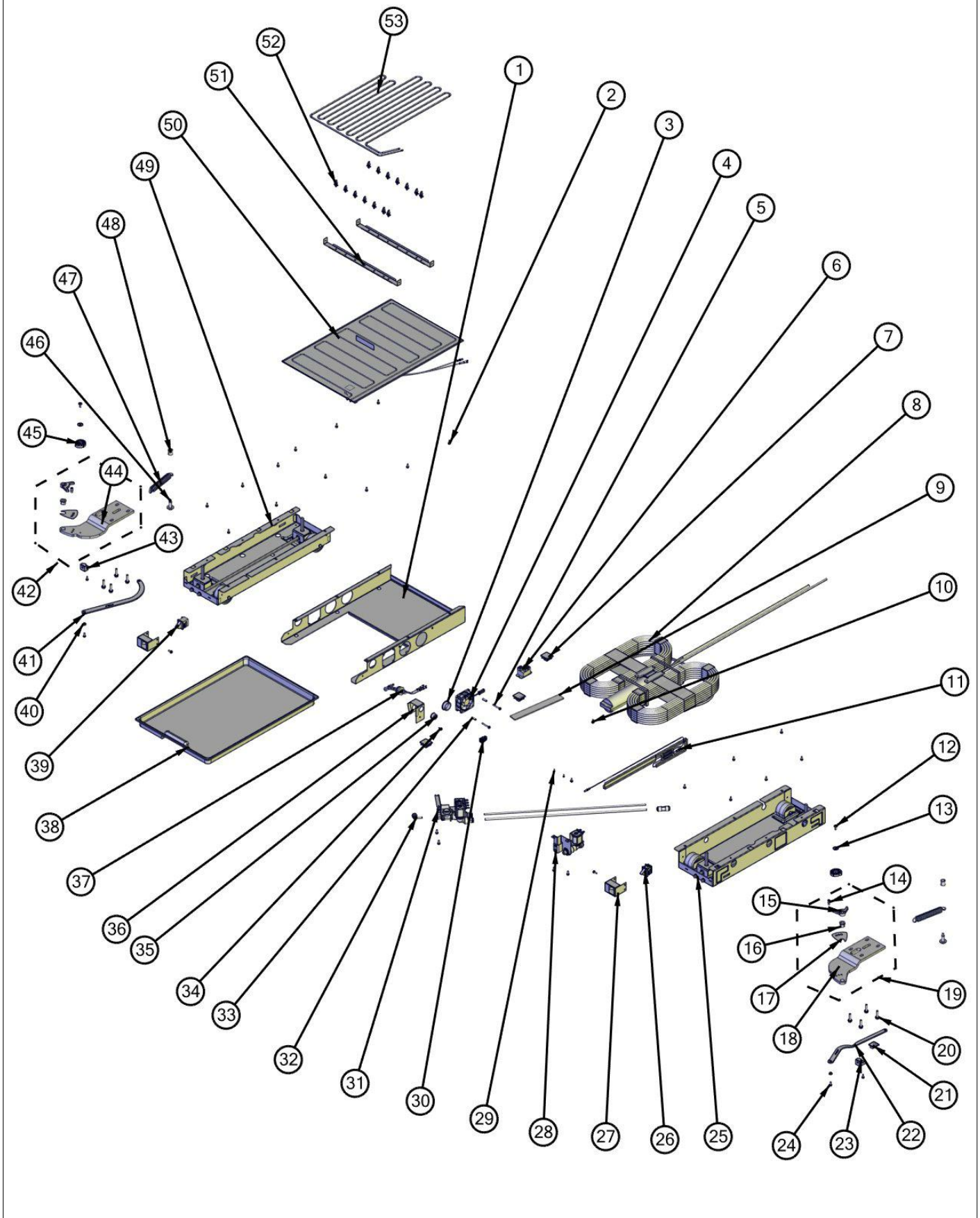
Item	Part No.	Name	Qty	Uom	NOTES
28	M0322202	TIE-WIRE	1	EA	
29	PB920201	ACCUMULATOR	1	EA	
30	PM010619	COMPRESSOR VCC	1	EA	
31	M0221523	SCREW - SHLDR	4	EA	
NI	A3189348	GASKET-FOAM VA3189348	1	EA	
NI	015364-000	HARNESS WIRING SXS MACHINE	1	EA	

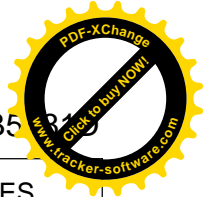
SB5481D Unit bottom parts



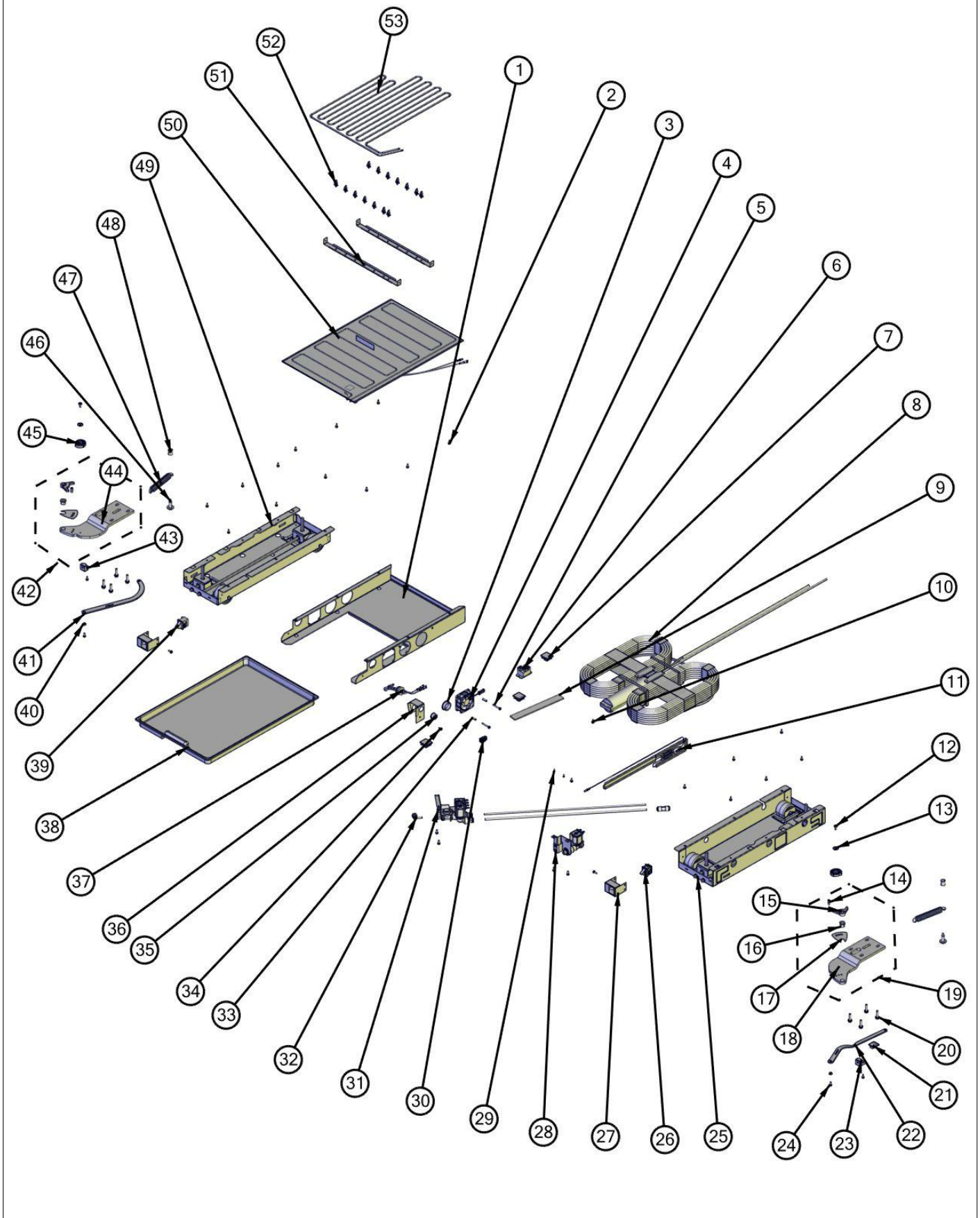


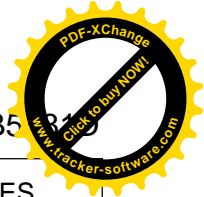
Item	Part No.	Name	Qty	Uom	NOTES
1	K20915952	SHIELD BOTTOM DRAIN	1	EA	
2	PD020194	SCR, HEX SRTD WSHR HD, #8-18 X 1/2	20	EA	
3	A4554817	BUSHING-SNAP VA4554817	1	EA	
4	004551-000	AXIAL FAN	1	EA	
<p>Comments for Part Num. 004551-000</p> <p>gboltz@VikingRange.com on Jul 21, 2016</p> <p>View service bulletin TR-0052-SP before ordering fan, if applicable order kit instead of fan</p>					
5	PD020274	SCR SLTD HEX WSHR HD 8X1.250 BT	2	EA	
6	014808-000	RELAY,WTR,VALVE	1	EA	
7	M0104102	CLIP-CORD RED	3	EA	
8	041669-000	FILTER/COIL TUBE ASSEMBLY	1	EA	
9	a3189370	GASKET-FOAM VA3189370	1	EA	
10	PD020010	10 X 3/8 GREEN GROUNDING SCREW	2	EA	
11	008501-000	HEATER PKT CBL WI CHASE	1	EA	
12	PD020234	SCREW THP 10-32 X .500 SS BO	2	EA	
13	000586-000a	WSHR FENDER .219X.688 X.030 BO	2	EA	Not available online / Call for pricing and availability
14	PC920145	PIN - DOOR STOP	2	EA	
15	PD940091	BUSHING - DOOR STOP	2	EA	
16	PD940090	BUSHING - WC DOOR LEVEL	2	EA	
17	PC920144	PLATE - WC DOOR SHIM	2	EA	
18	PC020288	HINGE PLATE LR	1	EA	
19	G3298648	RIGHT LW HINGE ASSEMBLY	1	EA	
20	000570-000	FASTENER, BOLT, 1/4-20 IHXWS 1" S ZN SER	8	EA	
21	m0104106	CLIP-CORD VM0104106	1	EA	
22	PC920166	BOTTOM HINGE BAR (RIGHT HINGE)	1	EA	
23	K2098044	BRKT GRILLE SUPPORT	1	EA	
24	M0220417	SCREW-TC	8	EA	





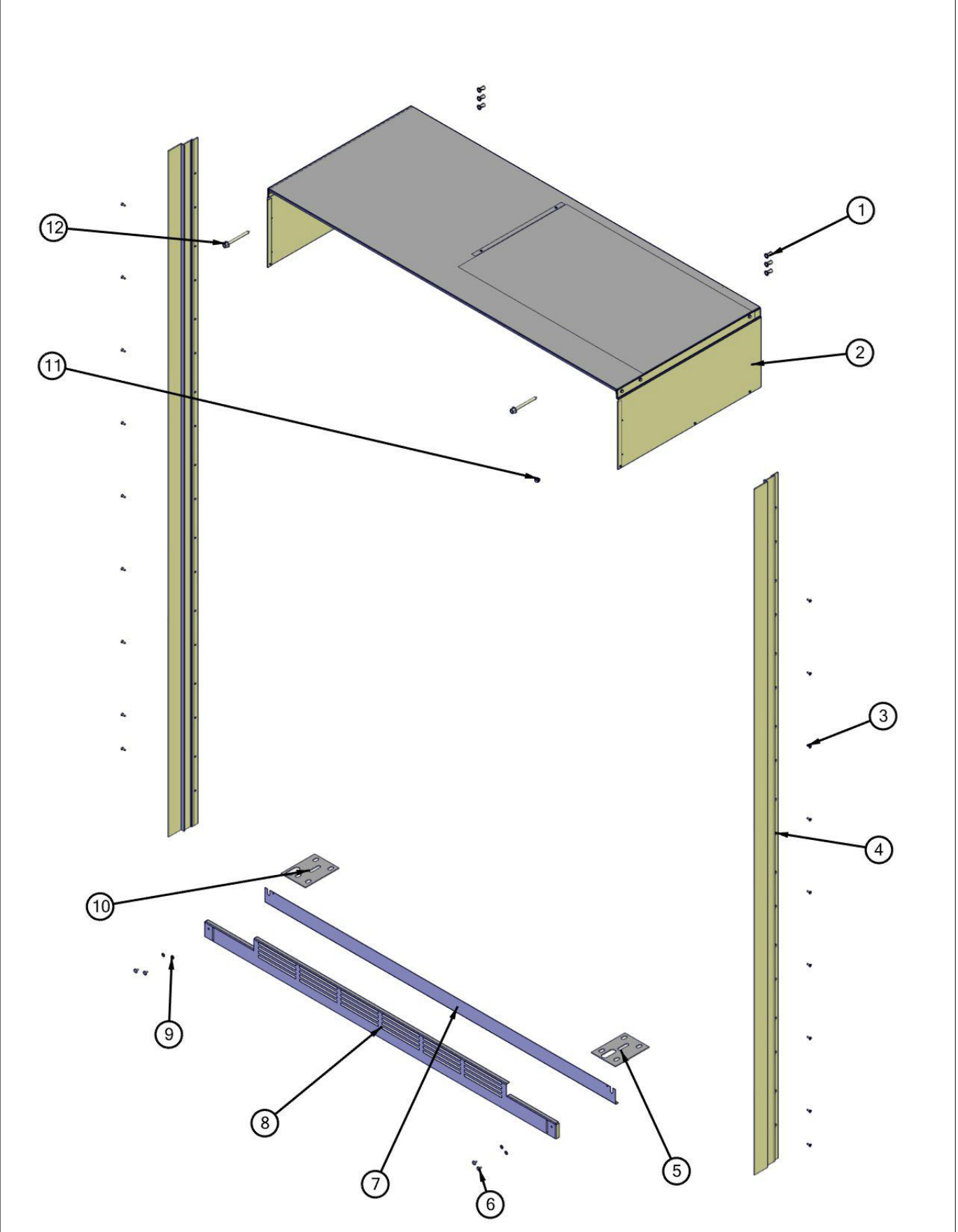
Item	Part No.	Name	Qty	Uom	NOTES
25	060890-000	LEVELER MODULE R	1	EA	
26	PE950147	SPST SWITCH	1	EA	
<p>Comments for Part Num. PE950147</p> <p>bradleysapplianceservice@shaw.ca on May 1, 2017 CAUTION WHEN ORDERING DOOR SWITCH. PARTS LISTINGS COULD BE INCORRECT. THERE IS TWO VERSIONS OF THIS DOOR SWITCH THAT NEEDS TO BE VISUALLY CHECKED ON UNIT TO DETERMINE CORRECT PART. PE950146 DOOR SWITCH 3 WIRE SPDT BLACK PE950147 DOOR SWITCH 2 WIRE SPST BLACK</p>					
27	014334-000	GRILLE SWITCH MOUNT	2	EA	
28	G32915704	BRKT AND VALVE SINGLE ASM DISP	1	EA	
29	PD020013	Screw, 6 X 3/8 Ph Pan	2	EA	
30	045406-000	PLUG HOUSING 6-CIRCUIT	1	EA	
31	G32914174	BRKT & VALVE J.G. INLET ASM	1	EA	
32	PB020301	STEM ELBOW 1/4	1	EA	
33	011332-000	SPACER,NYL	2	EA	
34	M0253916	SCREW-TF	1	EA	
35	A4554806	BUSHING-SNAP VA4554806	1	EA	
36	B20915627	BRACKET HORIZ FLOAT SWITCH	1	EA	
37	PE050248	FLOAT SWITCH HORIZONTAL	1	EA	
38	PK930348	DRAIN PAN	1	EA	
39	PE950146	SPST SWITCH	1	EA	
40	PD940094	BUSHING	2	EA	
41	PC920149	BOTTOM HINGE BAR (LEFT HINGE)	1	EA	
42	G3298649	LEFT LW HINGE ASSEMBLY	1	EA	
43	K2098096	BRKT GRILLE SUPPORT	1	EA	
44	PC020289	HINGE PLATE LL	1	EA	
45	PM010602	CAM DOOR ADJUSTMENT	2	EA	
46	M0221523	SCREW - SHLDR	2	EA	
47	pc910015	SPRING EXTENSION	2	EA	
48	PD940107	ROUND SPRING SPACER	2	EA	

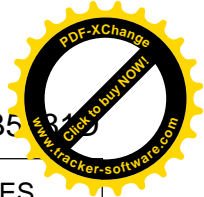




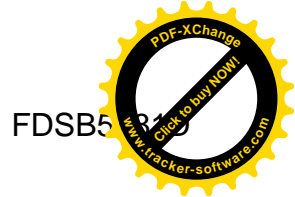
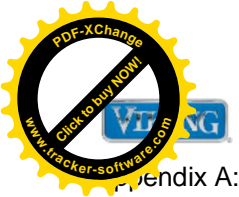
Item	Part No.	Name	Qty	Uom	NOTES
49	060891-000	LEVELER MODULE L	1	EA	
50	G50911853	TRAY PAN HEATER	1	EA	
51	K20911831	BRACKET CONDENSATE SUPPORT	2	EA	
52	PD030146	STAND OFF LOCK CLIP	14	EA	
53	F20915693	SERPENTINE CONDENSER DRAIN ALL SXS'S	1	EA	
NI	A3189368	GASKET-FOAM VA3189368	1	EA	

SB5481D Decor parts



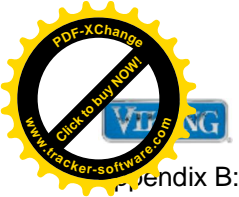


Item	Part No.	Name	Qty	Uom	NOTES
1	PD040157	BEARING SLEEVE	6	EA	
2	007981-000	MC COVER ASM BI 48	1	EA	
3	M0215318	SCREW-SM	18	EA	
4	PK920066	TRIM, EXTRU, SIDE DES	2	EA	
5	000537-000	SPACER BOTTOM HINGE LR	1	EA	
6	PD020032	SRW-8(A)X3/8PH.WFR HD 7/16DIA NICL	4	EA	
7	045012-000	SOLID, TOE, GRILLE, 48 SXS	1	EA	
8	045011-000	VENT, TOE, GRILLE, 48 SXS	1	EA	
9	40370P01	NYLON FLAT WASHER V40370P01	4	EA	
10	000538-000	SPACER BOTTOM HINGE LL	1	EA	
11	12115101	CLAMP-TUBE V12115101	1	EA	
12	PD020233	SCR LAG 5/16-9 GX 5/16X7/16 WAF IHXW 3 S ZN	2	EA	



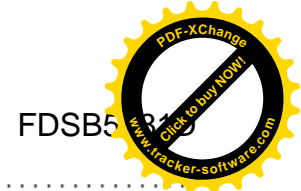
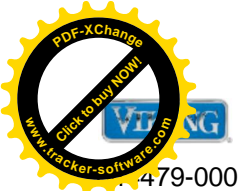
Appendix A:Pages Index

FDSB5481D Controls parts	1
FDSB5481D Decor parts	11
FDSB5481D Freezer Door parts	3
FDSB5481D Freezer comp-1	7
FDSB5481D Freezer compartment-2 parts	8
FDSB5481D Refrig-comp-2	6
FDSB5481D Refrigerator Door Assy	2
FDSB5481D Refrigerator comp-1	5
FDSB5481D Unit bottom parts	10
FDSB5481D Unit top	9
FDSB5481D Upper Grille parts	4



Appendix B: Parts Index

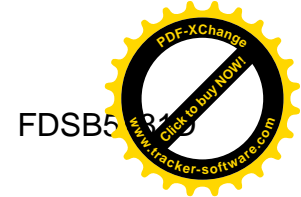
000537-000	11	014399-000	9
000538-000	11	014519-000	10
000570-000	9, 10	014808-000	3
000586-000a	10	015163-000	3
000950-000	2, 3	015164-000	9
000953-000	2, 3	015364-000	1
002297-000	2	015365-000	2
002301-000	3	016179-000	3
003334-000	3	016180-000	3
003620-000	3	016261-000	1
003621-000	2	016273-000	1
004500-000	2	016593-000	1
004501-000	3	016930-000	1
004528-000	6, 8	017695-000	1
004551-000	6, 10	019144-000	7
005319-000	1	020114-000	6
005396-000	1	020117-000	8
005454-000	2	021192-000	5
005456-000	3	023079-000	6, 8
006908-000	2, 3	023112-000	7
007047-000	2	025433-000	1
007070-000	2	029418-000	8
007301-000	6	031379-000	3
007302-000	6	033785-000	2
007377-000	2, 3	034755-000	4
007981-000	11	034902-000	2, 3
008399-000	2	034903-000	2, 3
008501-000	10	036580-000	3
009631-000	3	036886-000	2
010093-000	6	036888-000	3
010169-00	8	038762-000	7
011059-000	6	041669-000	10
011332-000	10	042300-000	3
011666-000	9	042336-000	3
012259-000	5	043624-000	5
013397-000	6	043893-000	6
013685-000	3	044214-000	5
013688-000	3	044219-000	5
014190-000	9	044232-000	5
014334-000	10	044384-000	5
		044385-000	5



479-000	1	C90910713WH	8
045011-000	11	F20910021	10
045012-000	11	F20915693	9
045406-000	10	F2096504	9
045692-000	5	F2099443	9
046235-000	5	F2099444	5
046255-000	5	G32911938	10
047016-000	1	G32914174	10
057731-000	7	G32915704	10
058966-000	8	G3298648	10
060890-000	10	G3298649	10
060891-000	10	G50911853	5
10270203	6, 8	G50911937	5
10428101	8	G50913708	3
10526701	7	G50914155	8
10527401	8	G5098660	10
10547001	9	K20911831	5
10623003	8	K20913096	1
10629001	8	K20915000	10
10699601	9	K20915952	8
10835901	9	K2096456	8
10916507	1	K2096457	8
12064001	1	K2096458	8
12102501	6	K2096461	10
12115101	11	K2098044	10
12193801	3	K2098096	9
12258501	7	K2099454	8
40370P01	11	L20910054	7
A3030303	8	L20910056	8
A3030361	1, 8	L20910057	7
A3189348	8, 9	L20910067	7
A3189368	5, 10	L20910074	7
A4554806	10	L20910075	5
A4554817	1, 10	L20913095	7
B10910081	3	L2098027	8
B20911863	7	L2099475	6
B20915627	10	L2099492	10
B8385402	3	M0104102	3
C8983701	6, 8	M0210443	2, 3
C90910058WH	7	M0210458	5, 7
C90910067WH	7	M0211021	



M0213503	7	PD020194	1, 5, 6, 7, 8, 9
M0215318	2, 3, 3, 11	PD020195	5, 9
M0220417	10	PD020233	11
M0221523	9, 10	PD020234	10
M0221913	6, 8	PD020274	10
M0223101	7	PD030146	10
M0224128	1, 6	PD030155	7
M0232929	6	PD040071	3
M0238535	7	PD040157	11
M0238859	1, 8	PD050019	2, 3
M0253916	8, 10	PD920161	5
M0270528	6	PD920162	5
M0270546	3	PD920174	2, 3
M0275196	8	PD940090	10
M0288120	1, 6	PD940091	10
M0321202	6, 7	PD940094	10
M0322202	9	PD940107	10
M0580007	6, 8	PE050248	10
M0581001	5, 7	PE070755	3
PB020301	10	PE950125	6, 8
PB920171	9	PE950146	10
PB920201	9	PE950147	10
PB970176	6, 7	PE950149	9
PB970187	9	PE950152	3
PB970188	9	PE950158	7
PC010022	3	PE970464	1
PC020288	10	PE970609	1
PC020289	10	PJ910031	8
PC040010	1	PK020079	6
PC920144	10	PK030435	5
PC920145	10	PK030439	5
PC920149	10	PK030470	3
PC920166	10	PK030540	8
PC920203	9	PK030566	3
PC920204	9	PK920066	11
PD020010	1, 6, 8, 9, 10	PK930074	7
PD020013	10	PK930075	7
PD020032	5, 11	PK930086	8
PD020188	6	PK930096	7
PD020191	7	PK930107	7
PD020193	1, 3	PK930173	5



PK930174	5
PK930175	5
PK930176	5
PK930264	7
PK930265	7
PK930266	7
PK930283	5
PK930297	3
PK930298	3
PK930308	5
PK930309	5
PK930327	5
PK930346	6, 8
PK930348	10
PM010540	7
PM010602	10
PM010616	9
PM010619	9
PM910190	7
PM910206	8
PM910227	6
PM910231	7
PM910287	5
PM910288	5
PM910331C	7
PM910334	5
PM910365	4
PM910375	7
PM910411	7
PM910435	7
V12203602	2
a3189370	8, 9, 10
f2096507	9
f2097740	9
g5096494	9
m0104106	1, 6, 9, 10
m0585504	1
pc910015	10
pd030118	9
pk930299	8
pk930404	3