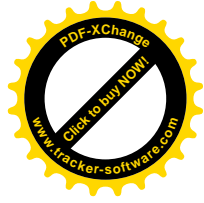
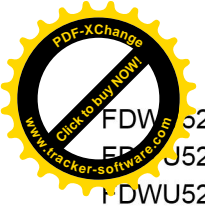




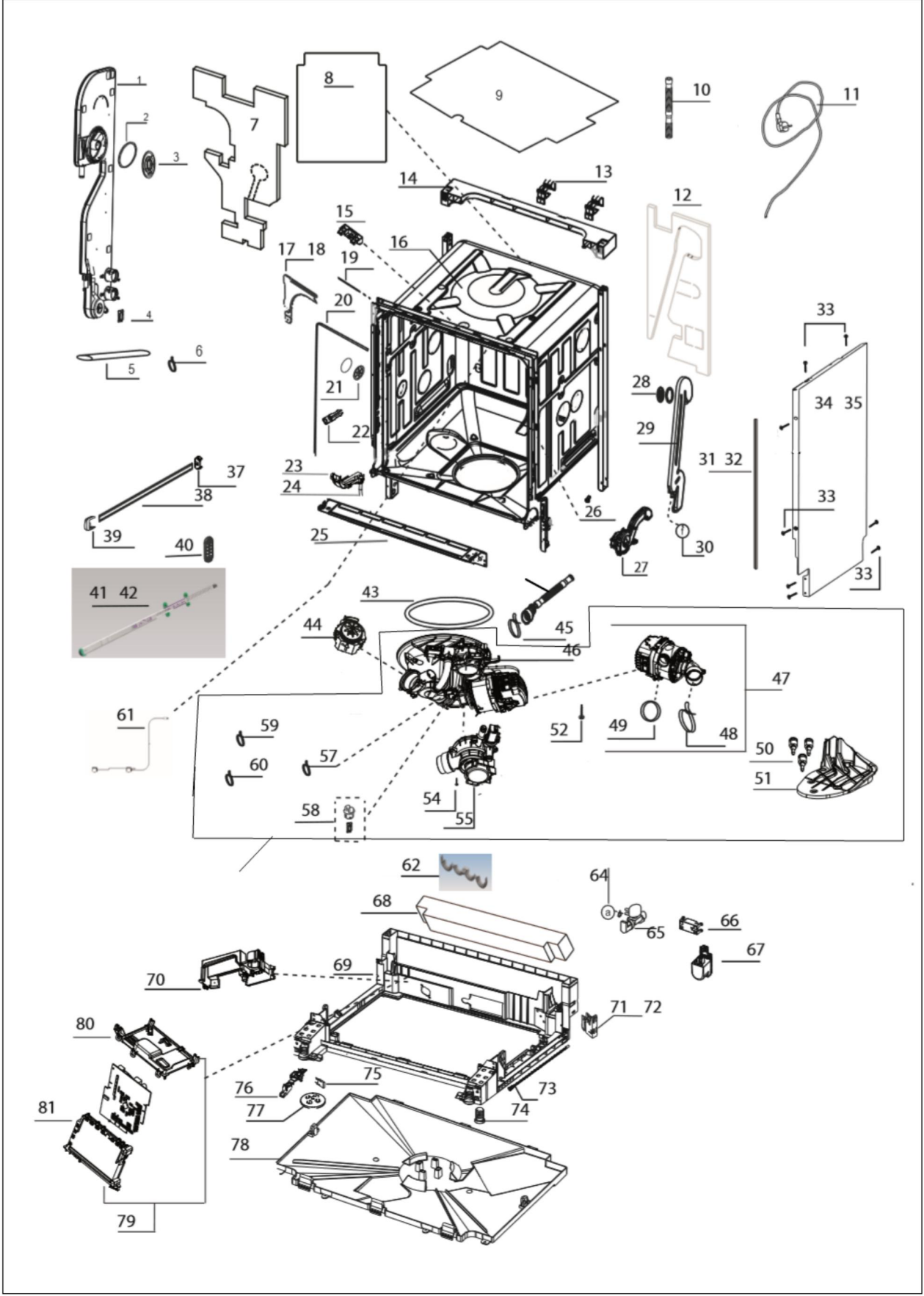
FDWU524





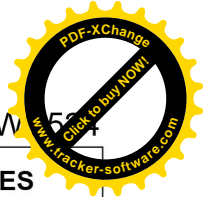
FDW524 Tub Parts	3
FDW524 Interior Parts	4
FDW524 Door Parts	5
Appendix A:Pages Index	A
Appendix B:Parts Index	B

WU524 Tub Parts

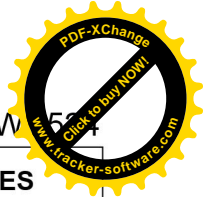




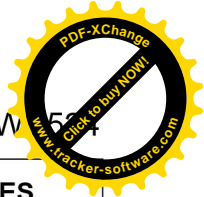
Item	Part No.	Name	Qty	Uom	NOTES
1	070162-000	AIR BREAKER_COUNTER GR SMALL	1	EA	
2	060206-000	AIR FUNNEL GASKET	2	EA	
3	050778-000	air funnel cup	2	EA	
4	061480-000	COUNTER PCB_4 (FLOW METER)	1	EA	
5	039874-000	HOSE (REGENERATION TO SUMP)	1	EA	
6	060723-000	HOSE CLAMP (Ø 16.4)	3	EA	
7	070159-000	ANGORA INNER TUB ISOLATION LEFT	1	EA	
8	070156-000	REAR FRAME COTTON FLEECE	1	EA	
9	061464-000	TUB COVER (2mm)	1	EA	
10	070180-000	DRAIN HOSE-L=2085MM (LONG DRAIN HOSE THAT RUNS TO THE SINK)	1	EA	
11	039949-000	MAIN POWER PLUG 120V USA	1	EA	
11	070139-000	MAIN PLUG EURO 230V CANADA	1	EA	
12	070155-000	INNER TUB ISOLATION-RIGHT	1	EA	
13	070188-000	ANGORA WATER INLET VALVE HOSE HOLDER	1	EA	
14	070206-000	HITIT REAR UPPER TRAVERSE	1	EA	
15	070090-000	DOOR LOCK HOOK SUPPORT BI	1	EA	
16	070094-000	STRUCTURE GR	1	EA	
17	070095-000	ANGORA CORNER BRACKET	1	EA	
18	070096-000	ANGORA CORNER BRACKET	1	EA	
19	070193-000	ANGORA LARGE UPPER SOUND GASKET	1	EA	
20	039769-000	DOOR SEALING GASKET	1	EA	
21	050778-000	air funnel cup	2	EA	
22	070089-000	HITIT_LOCK_HOOK-7016	1	EA	
23	070172-000	ANGORA OWERFLOW SIPHON	2	EA	
24	070183-000	HOSE (OVERFLOW SIPHON)	2	EA	
25	070087-000	ANGORA FRONT LOWER SUPPORT SHEET	1	EA	



Item	Part No.	Name	Qty	Uom	NOTES
26	070209-000	BUILT IN CENTERING PLUG-7037	8	EA	
27	070186-000	ANGORA FAN GROUP	1	EA	
28	050778-000	air funnel cup	2	EA	
29	060175-000	FAN SUCTION TUBE - WELDED	0.9	EA	
30	050797-000	HOSE BETWEEN FAN AND SUMP	1	EA	
31	057529-000	NOISE ISOLATION	2	EA	
Not Shown	NOTE	(SLIDES ON TRIM OF TUB)		EA	
32	039760-000	NOISE ISOLATION	2	EA	
Not Shown	NOTE	(STICKS ON SIDE OF UNIT)		EA	
33	060158-000	SCREW	2	EA	
34	070098-000	SIDE PANEL-LEFT-ARC744	1	EA	
35	070099-000	SIDE PANEL-RIGHT-ARC744	1	EA	
37	050782-000	rail cap front back	2	EA	
38	039887-000	RAIL	2	EA	
39	070123-000	RAIL CAP-7037	2	EA	
40	039777-000	RAIL WHEEL HOLDER	4	EA	
41	070140-000	UPPER BASKET TELESCOPIC RAIL GROUP, LH	1	EA	
42	070141-000	UPPER BASKET TELESCOPIC RAIL GROUP, RH	1	EA	
43	039722-000	SUMP GASKET	1	EA	
44	070132-000	BLDC DRAIN PUMP GROUP	1	EA	
45	039953-000	HOSE CLAMP.(+ 34_1)	1	EA	
46	070168-000	KARINA SUMP GROUP ASM	1	EA	
47	070192-000	ATLANTIS MOTOR CLAMP GROUP (INCLUDES FLOW THRU HEATER)	1	EA	
48	050799-000	HOSE CLAMP	1	EA	
49	070189-000	CRIMP CLAMP	1	EA	
50	060182-000	CIRCULATION PUMP DAMPENING RUBBER	3	EA	
51	070129-000	KARINA QUADRO MOTOR HANGING BRACKET	1	EA	
52	070185-000	CAD ITEM	2	EA	

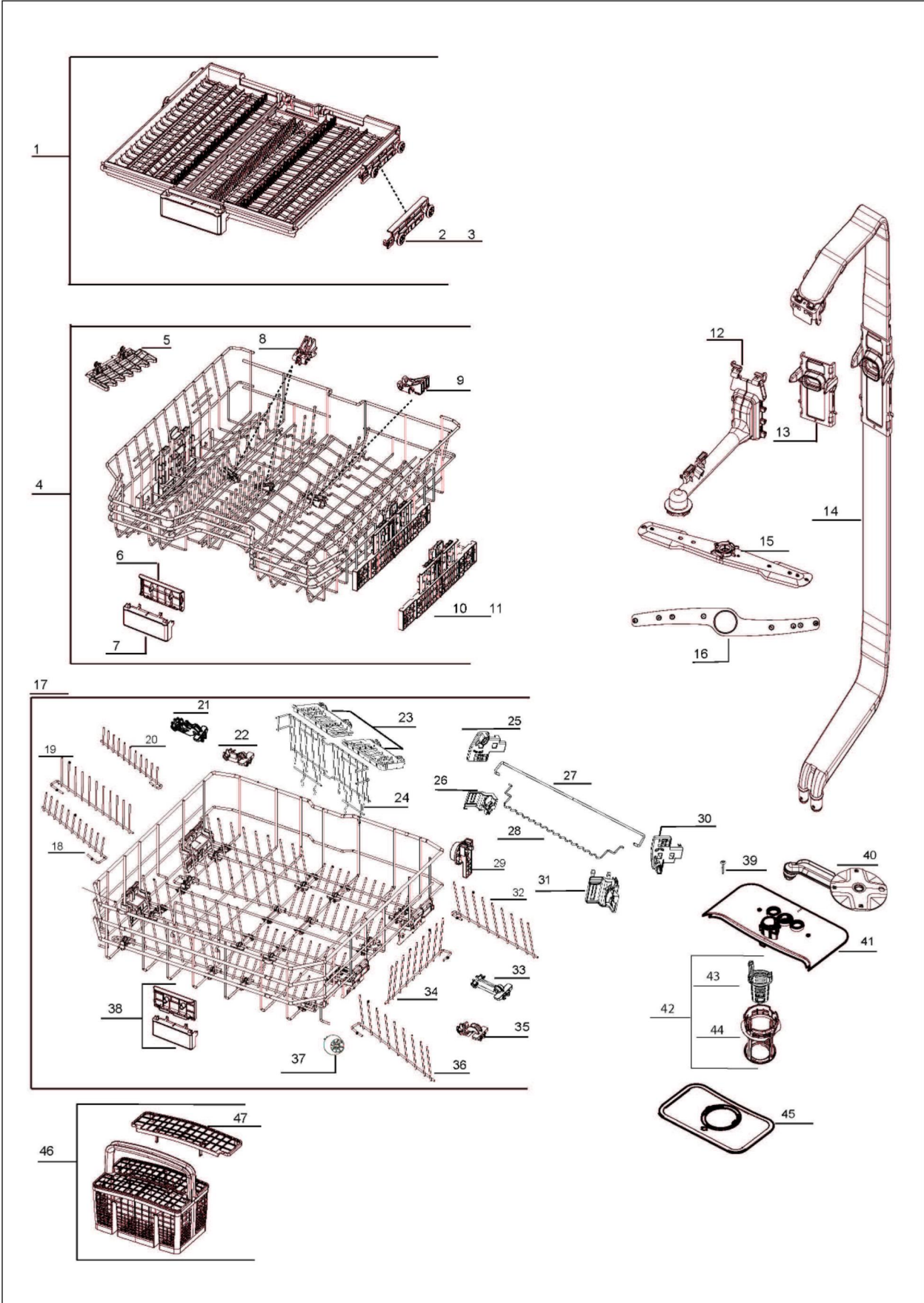


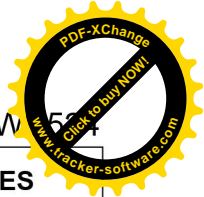
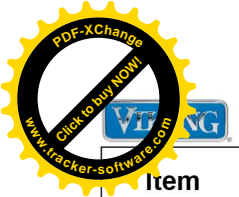
Item	Part No.	Name	Qty	Uom	NOTES
53	070211-000	KARİNA SUMP GROUP	1	EA	
54	039945-000	SCREW	3	EA	
55	070175-000	KARİNA VALVE GROUP	1	EA	
57	057589-000	HOSE CLAMP (Ø 15.88)	1	EA	
58	070145-000	TURBIDITY+NTC GROUP	1	EA	
59	057528-000	Hose clamp with screw	1	EA	
60	039951-000	HOSE CLAMP (DIA 17.3)	1	EA	
61	070202-000	TOP LIGHTING GROUP	1	EA	
62	070204-000	ANGORA DRAIN HOSE LOCK	1	EA	
64	070182-000	HOSE (VALVE-COUNTER)	1	EA	
65	070150-000	WATER INLET VALVE	1	EA	
NI	061502-000	SCREW (WATER INLET VALVE)	2	EA	
66	070207-000	ANGORA 1.5MM NETWORK CABLE LOCK	1	EA	
67	061473-000	AMERICA BOBBIN TERFERENCE FILTER (POWER MODULE)	1	EA	
68	070160-000	ANGORA KICK PLATE ISOLATION	1	EA	
69	070097-000	ANGORA BUILT-IN BOTTOM TRAY GR	1	EA	
70	070210-000	MEŞE CARD HOLDER CASING	1	EA	
71	070091-000	ANGORA BACK SIDE ADJUSTABLE FOOT RIGHT	1	EA	
72	070092-000	ANGORA BACK SIDE ADJUSTABLE FOOR GR LEFT	1	EA	
73	070093-000	REAR ADJUSTABLE FOOT CONNECTION PART_3	2	EA	
74	070085-000	ANGORA BUILT UNDER FOOT	4	EA	
75	070153-000	HITIT_MICRO_SWITCH	0.75	EA	
76	070151-000	HITIT OVER FLOATING CASING	1	EA	
77	070208-000	HİTİT FLOAT STYROPOR	1	EA	
78	070128-000	ANGORA BOTTOM TRAY	1	EA	
79	070142-000	MAIN BOARD uE934800	1	EA	
80	070144-000	MESE CARD HOLDER BACK PART	1	EA	
81	070143-000	MESE CARD HOLDER FRONT PART	1	EA	



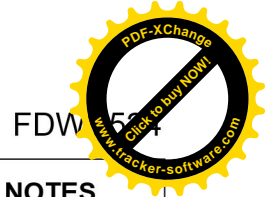
Item	Part No.	Name	Qty	Uom	NOTES
82	070181-000	DRAIN HOSE-L=440MM (SHORT DRAIN HOSE THAT CONNECTS TO SUMP GROUP)		EA	
NI	070201-000	ACCESSORIES PACK	1	EA	
Not Shown	NOTE	(INSTALL HARDWARE)		EA	
NI	078876-000	BOLT 4X43 (CUSTOM PANEL INSTALL SCREW)	6	EA	

WU524 Interior Parts





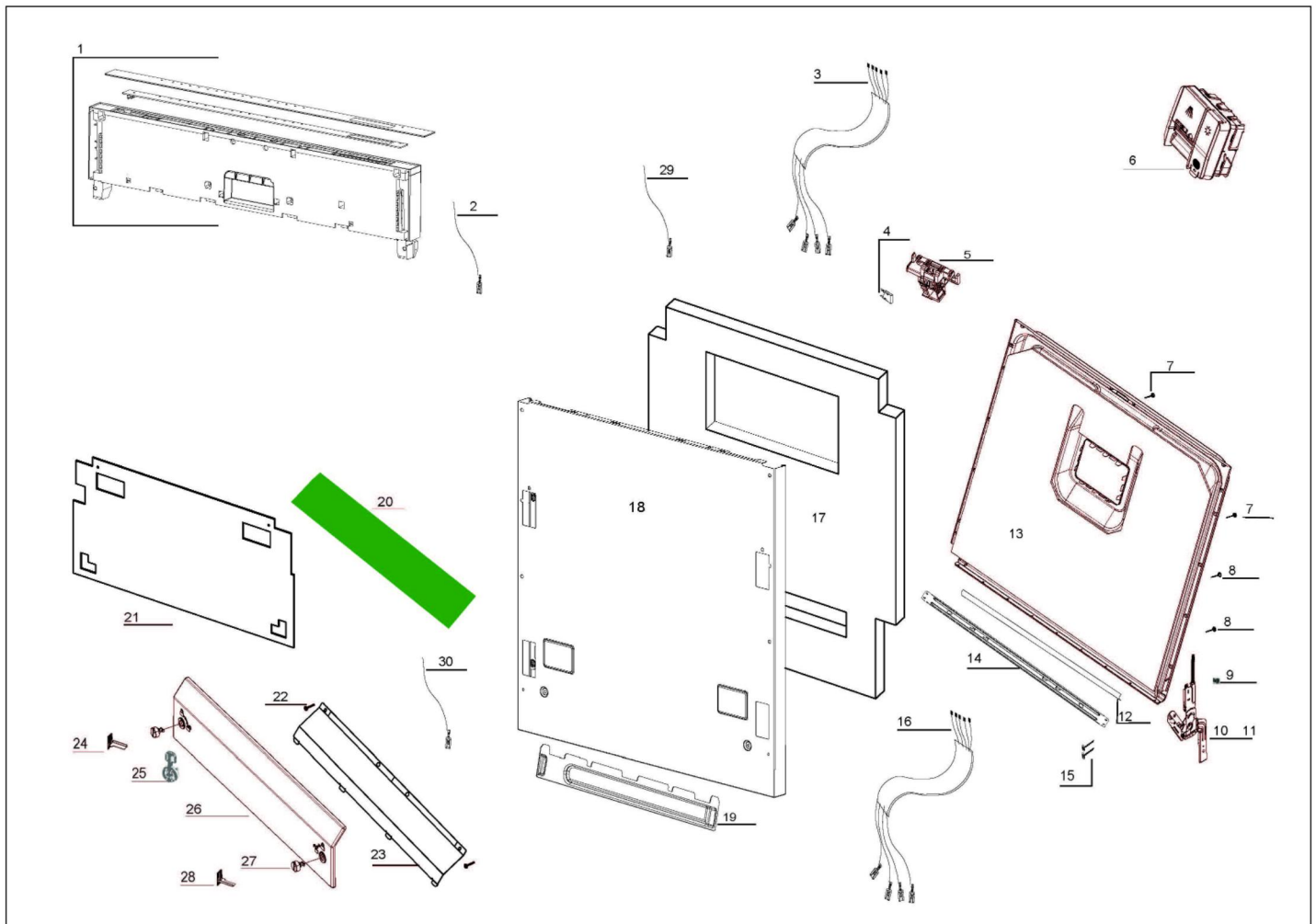
Item	Part No.	Name	Qty	Uom	NOTES
1	070203-000	ATLANTIS CUTLERY TRAY GR	1	EA	
2	070194-000	FLEXIBLE CUTLERY TRAY WHEEL MECHANISM GR - LEFT	1	EA	
3	070195-000	FLEXIBLE CUTLERY TRAY WHEEL MECHANISM GR - RIGHT	1	EA	
4	070108-000	EU3 UPPER BASKET GROUP	1	EA	
5	070106-000	OEM ATLANTIS SHELF GROUP	4	EA	
6	050883-000	LOWER BASKET HANDLE	1	EA	
7	070117-000	PANEL	1	EA	
8	070124-000	EU3 TOP BASKET BOWL FOLDABLE PART 7016	2	EA	
9	070125-000	EU3 TOP BASKET GLASS FOLDABLE PART 7016	1	EA	
10	070109-000	TELESCOPIC RAIL MECHANISM GROUP - LEFT	1	EA	
11	070110-000	TELESCOPIC RAIL MECHANISM GROUP - RIGHT	1	EA	
12	070165-000	ATLANTIS UPPER SPRAY ARM FEEDING HOSE GR	1	EA	
13	070167-000	UPPER SPRAY ARM FEED PIPE CENTERING PART	1	EA	
14	070166-000	DORA WATER SUPPLY TUBE GR.	1	EA	
15	070164-000	ATLANTIS TOP SPRAY ARM GROUP COMPLETE	1	EA	
16	070163-000	METAL SPTAY ARM GR.	1	EA	
17	070111-000	EU2-3 LOWER BASKET GROUP	1	EA	
18	070119-000	LOWER BASKET PLATE HOLDER BALL BACK RIGHT	1	EA	
19	070115-000	LOWER BASKET PLATE HOLDER BALL BACK RIGH	2	EA	
20	070122-000	LOWER BASKET PLATE HOLDER BALL RIGHT FRONT	1	EA	
21	070196-000	FOLDABLE PART LONG	6	EA	
22	070198-000	FOLDABLE PART SHORT	2	EA	
23	070107-000	EU3 MULTI PURPOSE TRAY	2	EA	
24	070113-000	EU3 MULTIPURPOSE RACK WIRE	1	EA	
25	070102-000	WINE GLASS TOP WIRE HOLDER-LEFT-7016	1	EA	

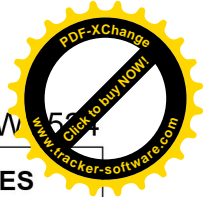
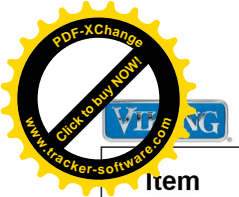


FDW 554

Item	Part No.	Name	Qty	Uom	NOTES
26	070104-000	WINE GLASS BOTTOM WIRE HOLDER-LEFT-7016	1	EA	
27	070101-000	WINE GLASS BOTTOM WIRE RAL7016	1	EA	
28	070100-000	WINE GLASS TOP WIRE RAL7016	1	EA	
29	070112-000	LOWER BASKET STOPER PLASTIC WHELL GR.	6	EA	
30	070103-000	WINE GLASS TOP WIRE HOLDER-RIGHT-7016	1	EA	
31	070105-000	WINE GLASS BOTTOM WIRE HOLDER-RIGHT-7016	1	EA	
32	070120-000	LOWER BASKET PLATE HOLDER BALL LEFT FRONT	1	EA	
NI	070121-000	LOWER BASKET PLATE HOLDER BALL LEFT FRONT	1	EA	
33	070197-000	CLIPS LONG	6	EA	
34	070114-000	LOWER BASKET PLATE HOLDER BALL BACK LEFT	1	EA	
35	070199-000	CLIPS SHORT	2	EA	
36	070118-000	LOWER BASKET PLATE HOLDER BALL BACK LEFT	1	EA	
37	060707-000	GRD LOWER BASKET WHEEL GROUP	2	EA	Not available online / Call for pricing and availability
38	050883-000	LOWER BASKET HANDLE	1	EA	
39	039945-000	SCREW	3	EA	
40	060195-000	ZONE WASH GROUP	1	EA	
41	070174-000	KARINA FILTER SUPPORT GROUP	1	EA	
42	070177-000	FILTER GROUP_3 NO RING	1	EA	
43	057474-000	COARSE FILTER	1	EA	
44	070176-000	MICRO FILTER GROUP_3 NO RING	1	EA	
45	070173-000	METAL FILTER HALF	1	EA	
46	057482-000	CUTLERY BASKET GROUP	1	EA	
47	039791-000	CUTLERY BASKET SEPARATOR	2	EA	

WU524 Door Parts

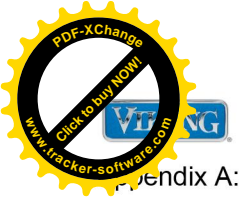




Item	Part No.	Name	Qty	Uom	NOTES
1	070126-000	PANEL GROUP	1	EA	
2	057476-000	PROGRAM END SIGNAL CABLE	1	EA	
3	070133-000	MESE CABLE HARNESS (LOWER COMPONENTS)	1	EA	
4	070154-000	DOOR SWITCH	1	EA	
5	069402-000	SELFRESETTING LOCK GROUP	1	EA	
6	070161-000	BITRON DETERGENT BOX GROUP	1	EA	
7	039914-000	SCREW	8	EA	
8	060711-000	SCREW	4	EA	
9	039877-000	SCREW	6	EA	
10	070130-000	HINGE GROUP SPRING SINGLE FULCRUM	1	EA	
11	070131-000	HINGE GROUP SPRING SINGLE FULCRUM	1	EA	
12	039908-000	DOOR SEALING GASKET	1	EA	
13	070086-000	ATLANTIS INNER DOOR BITUMEN GR.	1	EA	
14	039935-000	HINGE ARM SUPPORT	1	EA	
15	039917-000	BOLT M4X8 D3731 D3421	11	EA	
16	070134-000	MESE CABLE HARNESS (INCLUDES INDICATOR LIGHT)	1	EA	
17	070088-000	DOOR INSULATION	1	EA	
18	059867-000	OUTER DOOR	1	EA	Not available online / Call for pricing and availability
19	070157-000	ANGORA BI KICK PLATE PAD	1	EA	
20	070158-000	KICK PLATE FELT	1	EA	
21	070200-000	KICK PLATE RUBBER	1	EA	
NI	063681-000	INSULATION MATERIAL	1	EA	
Not Shown	NOTE	(GOES BEHIND KICKPLATE)		EA	
22	060158-000	SCREW	2	EA	
23	070146-000	ANGORA BI KICK PLATE STEEL	1	EA	
24	070147-000	PLASTIC NORDIC SETTING PART, RH BRACKET	1	EA	
25	070149-000	ANGORA NORDIC SHEET METAL ADJ. LOCK	2	EA	

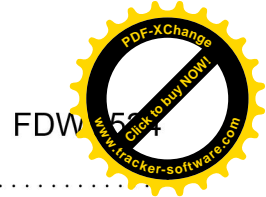
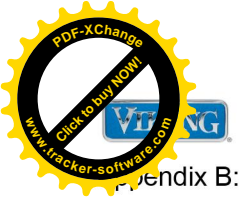


Item	Part No.	Name	Qty	Uom	NOTES
26	070138-000	PLASTIC NORDIC KICK PLATE	1	EA	
27	070137-000	PLASTIC NORDIC KICK PLATE HOLDING PART	2	EA	
28	070148-000	PLASTIK NORDIC SETTING PART, LH BRACKET	1	EA	
29	070135-000	PALOS CABLE HARNESS - 1.0MM2	1	EA	
30	070136-000	CABLE HARNESS NEW DOOR OPEN	1	EA	
NI	PDDP524	VIKING PROFESSIONAL DOOR PANEL		EA	
Not Shown	NOTE	(ACCESSORY, ORDER THROUGH DEALER)		EA	
NI	TVDDP524	TUSCANY DOOR PANEL		EA	
Not Shown	NOTE	(ACCESSORY, ORDER THROUGH DEALER)		EA	
NI	MPDDP524	VIRTUOSO DOOR PANEL		EA	
Not Shown	NOTE	(ACCESSORY, ORDER THROUGH DEALER)		EA	



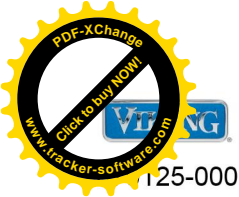
Appendix A:Pages Index

FDWU524 Door Parts	3
FDWU524 Interior Parts	2
FDWU524 Tub Parts	1



Appendix B: Parts Index

039722-000	1	063681-000	3
039760-000	1	069402-000	3
039769-000	1	070085-000	1
039777-000	1	070086-000	3
039791-000	2	070087-000	1
039874-000	1	070088-000	3
039877-000	3	070089-000	1
039887-000	1	070090-000	1
039908-000	3	070091-000	1
039914-000	3	070092-000	1
039917-000	3	070093-000	1
039935-000	3	070094-000	1
039945-000	1, 2	070095-000	1
039949-000	1	070096-000	1
039951-000	1	070097-000	1
039953-000	1	070098-000	1
050778-000	1, 1, 1	070099-000	1
050782-000	1	070100-000	2
050797-000	1	070101-000	2
050799-000	1	070102-000	2
050883-000	2, 2	070103-000	2
057474-000	2	070104-000	2
057476-000	3	070105-000	2
057482-000	2	070106-000	2
057528-000	1	070107-000	2
057529-000	1	070108-000	2
057589-000	1	070109-000	2
059867-000	3	070110-000	2
060158-000	1, 3	070111-000	2
060175-000	1	070112-000	2
060182-000	1	070113-000	2
060195-000	2	070114-000	2
060206-000	1	070115-000	2
060707-000	2	070117-000	2
060711-000	3	070118-000	2
060723-000	1	070119-000	2
061464-000	1	070120-000	2
061473-000	1	070121-000	2
061480-000	1	070122-000	2
061502-000	1	070123-000	1
		070124-000	2



070125-000	2	070168-000	1
070126-000	3	070172-000	1
070128-000	1	070173-000	2
070129-000	1	070174-000	2
070130-000	3	070175-000	1
070131-000	3	070176-000	2
070132-000	1	070177-000	2
070133-000	3	070180-000	1
070134-000	3	070181-000	1
070135-000	3	070182-000	1
070136-000	3	070183-000	1
070137-000	3	070185-000	1
070138-000	3	070186-000	1
070139-000	1	070188-000	1
070140-000	1	070189-000	1
070141-000	1	070192-000	1
070142-000	1	070193-000	1
070143-000	1	070194-000	2
070144-000	1	070195-000	2
070145-000	1	070196-000	2
070146-000	3	070197-000	2
070147-000	3	070198-000	2
070148-000	3	070199-000	2
070149-000	3	070200-000	3
070150-000	1	070201-000	1
070151-000	1	070202-000	1
070153-000	1	070203-000	2
070154-000	3	070204-000	1
070155-000	1	070206-000	1
070156-000	1	070207-000	1
070157-000	3	070208-000	1
070158-000	3	070209-000	1
070159-000	1	070210-000	1
070160-000	1	070211-000	1
070161-000	3	078876-000	1
070162-000	1	MPDDP524	3
070163-000	2	PDDP524	3
070164-000	2	TVDDP524	3
070165-000	2		
070166-000	2		
070167-000	2		