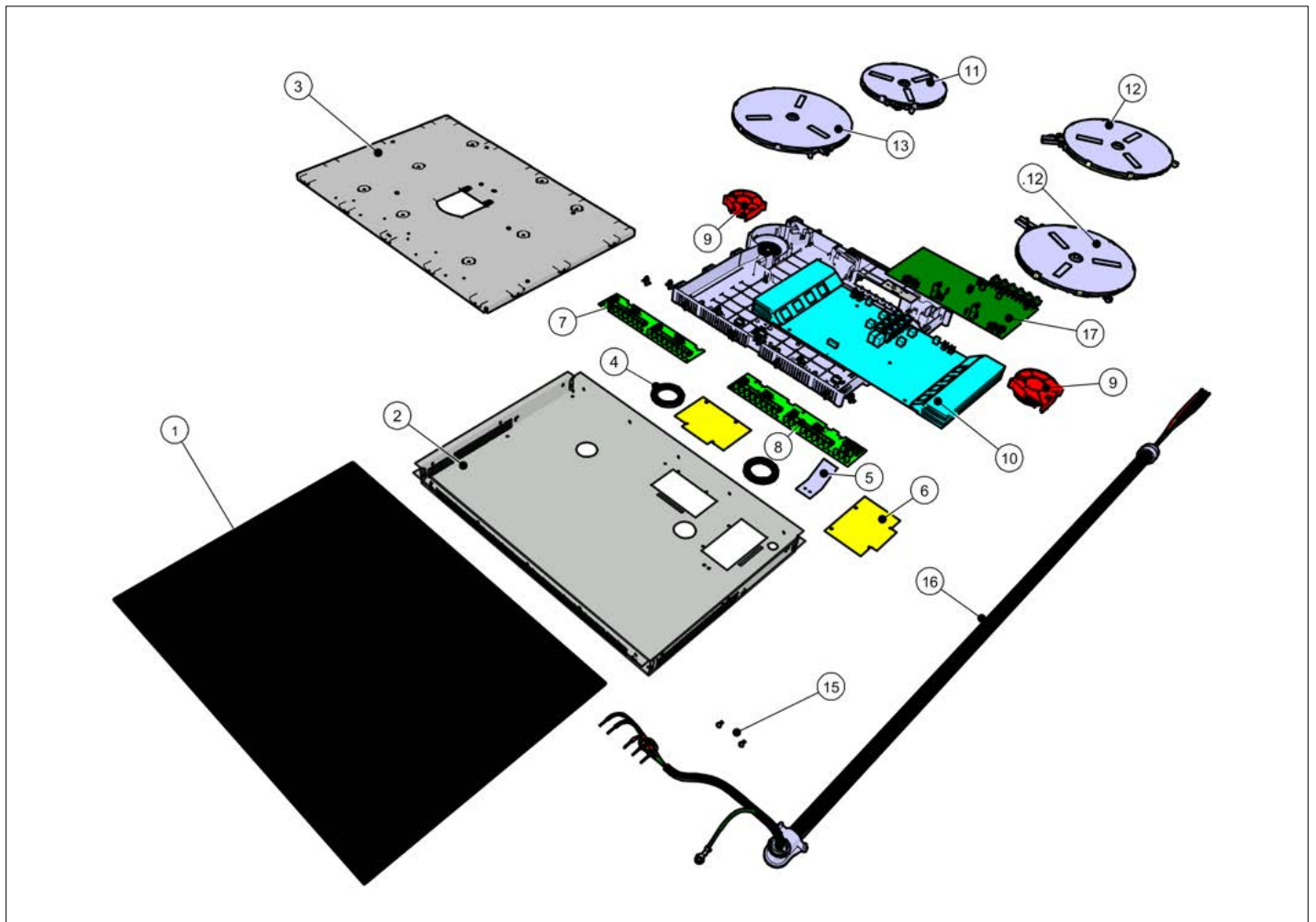


# **MVIC6304BBG Induction Cooktop**

MVIC6304BBG .....	1
Appendix A:Pages Index .....	A
Appendix B:Parts Index .....	B



MVIC6304BBG





Item	Part No.	Name	Qty	Uom	NOTES
1	064391-000	Glass top assembly, 30"	1	EA	
2	060970-000	BOX, BNR, INDUCTION 30 MVIC	1	EA	
3	063323-000	MOUNTING PLATE ASSEMBLY (Not replaceable)	0	EA	
4	003820-000	INDUCTION FAN SEAL - NLA	2	EA	
5	062717-000	BRACKET, GNDG	1	EA	
6	061639-000	COVER, TERMINAL BLOCK, MVIC	2	EA	
7	062027-501	TOUCH CONTROL, SLAVE, DOUBLE	1	EA	
8	064514-501	TOUCH CONTROL MASTER	1	EA	
9	062029-000	Fan	2	EA	
10	064677-501	POWER BOARD	1	EA	
11	062021-000	Inductor coil, 1.4kw-2.2kw	1	EA	
12	062033-000	Inductor coil, 1.85kw-3kw	2	EA	
13	062035-000	Inductor coil, 2.3kw-3.7kw	1	EA	
15	PD020004	10X3/8PH.HD.TYPE 25 REPL PD040125	6	EA	
16	062466-000	CONDUIT, 30" MVIC, 8AWG	1	EA	
17	062031-000	Filter, 4 burner	1	EA	
NI	038618-000	BRACKET, HOLD	6	EA	
NI	PD020004	10X3/8PH.HD.TYPE 25 REPL PD040125	6	EA	
NI	PD030029	SELF RETAINING NUT (1/4-20)	6	EA	
NI	PD010027	EYE BOLT-VGSU101/161	6	EA	



Appendix A:Pages Index

MVIC6304BBG ..... 1



Appendix B:Parts Index

003820-000	1
038618-000	1
060970-000	1
061639-000	1
062021-000	1
062027-501	1
062029-000	1
062031-000	1
062033-000	1
062035-000	1
062466-000	1
062717-000	1
063323-000	1
064391-000	1
064514-501	1
064677-501	1
PD010027	1
PD020004	1, 1
PD030029	1