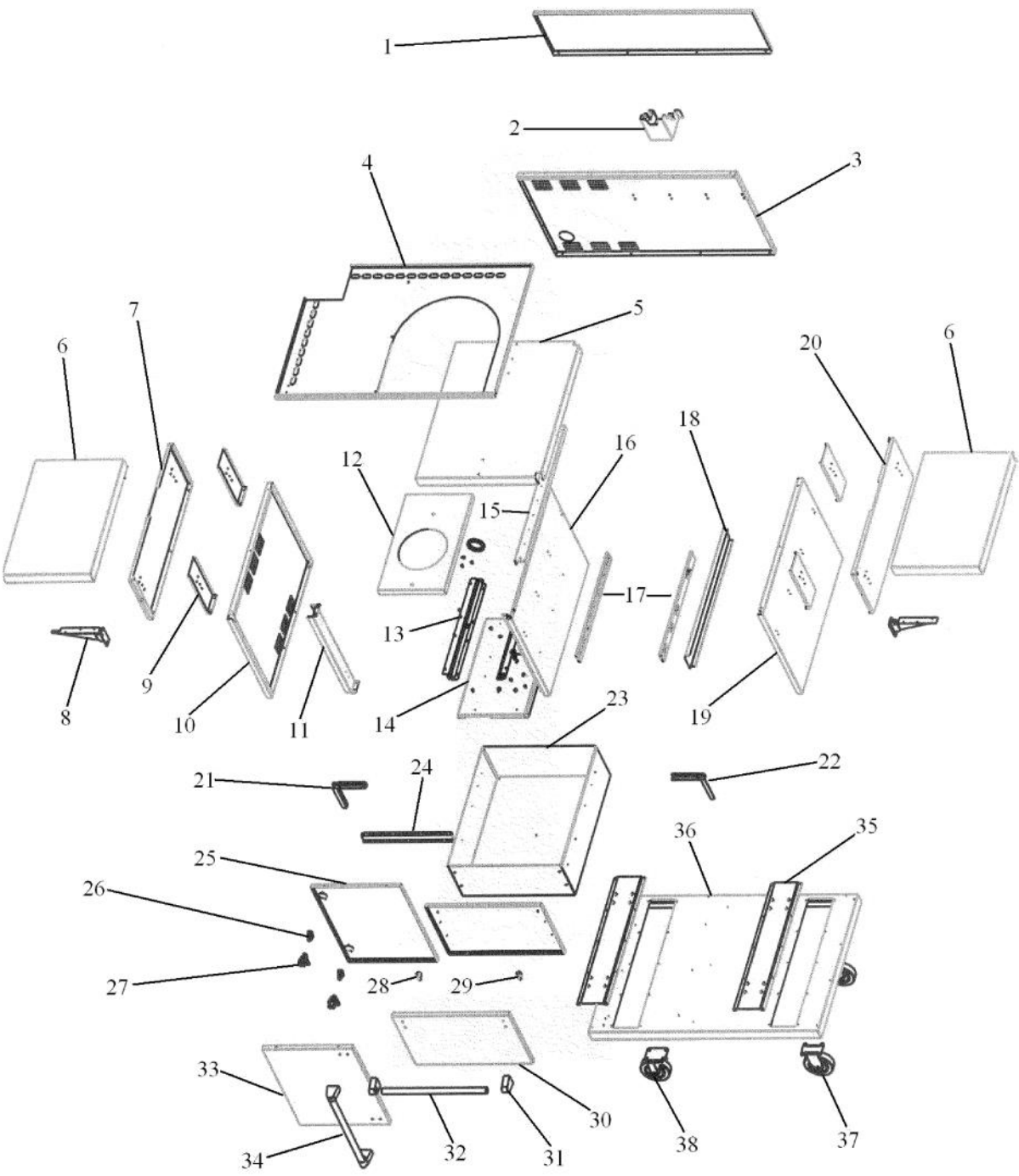


Ref #	Part Number	Qty.	Description
1	G5007416		SIDE BURNER COVER ASSEMBLY
2	PA060051		GRILL V GRATE (PHASE 2)
3	PA030002SS		BURNER BOWL (VGBQ) XSSX
4	B2105291		PHASE II GRATE SUPPORT 41
5	PA080053		REAR TOP BURNER
6	PA080052		FRONT BURNER
7	PA020028		SPARK IGNITER
8	B2005260		PHASE II BURNER SUPPORT
9	B2005209		GRILL BOX TRIM
10	L1004881		REAR HEAT SHIELD 41 (PHASE 2)
11	B2005206		GRILL BOX BACK 41 (PHASE 2)
12	B2006340		GRATE SUPPORT BRACKET
13	B2006305		HEAT SHIELD BRACKET
14	B2009118		CART TOP (QSC41)
	B20014408		QSC41 CART TOP (NEW)
15	B2009116		UPPER CART BOTTOM
16	L1005398		SIDE HEAT SHIELD
17	B2005203		GRILL BOX SIDE RH (PHASE 2)
18	B2005204		PANEL, GRL, LH
19	PE020051		RATING PLATE
20	PA050091		QSC41 MANIFOLD
21	B2006340		GRATE SUPPORT BRACKET
22	PB040167		MALE COUPLER (PHASE 1 GRILL)
23	B2009123		MODULE BRACKET
24	PA020036		SPARK MODULE
25	G3005214		DRIP TRAY SLIDE - LH
26	G3005215		DRIP TRAY SLIDE - RH
27	B2005336		SIDE BURNER DRIP TRAY
28	B3005337		SIDE BURNER DRIP TRAY HANDLE
29	PD020082		10 X 24 COUNTERSUNK S.S. SCREW
30	PC020025		DRIP TRAY WHEEL
31	PD030044		10-24 KEPS NUT SS
32	B2009120		FALSE TRAY BRACKET
33	B3005219		GRILL BOX FRONT
34	PA010151		GRILL VALVE NAT. (1,800-15,000 BTU)
	PA010152		SUB TO 003539-000 - GRILL VALVE L.P. (3,700-13,500 BTU)
35	PE050063		SPARKER SWITCH
36	B3009121		FALSE TRAY HANDLE
	C9309121BR		FALSE TRAY HANDLE - BR
37	B9209117		QSC41 CONTROL PANEL
38	PB010171		BEZEL - SS
	PB010172		BEZEL NEW BR REPL PB010107
39	PB010163		OVEN LIGHT SWITCH KNOB BK
40	PA010097		GRILL BURNER KNOB
41	PE030096		CART DRAWER HANDLE XSSX 16.494
	PE030096PVD		CART DOOR HANDLE - BQC410T -BRASS
42	PE030001		BRACKET, DOOR, HANDLE
	PE030001PVD		END CAP DOOR HANDLE XBR
43	G3005222		LANDING LEDGE ASSY-41 (PHASE 2)
NI	G4006378		WIRE ASSY (VGBQ-T SERIES) 25
NI	G4001656		SPARK MODULE GROUND WIRE
NI	G4006381		WIRE ASSY (VGBQ-T SERIES) 15
NI	G4006382		WIRE ASSY (VGBQ-T SERIES) 30
NI	G3004937		REGULATOR ASSY - L.P. W/HOSE
A	PA070005		PRESSURE REG.(LP) RV47L-77-10.0
B	PB040046		1/2 CLOSE NIPPLE (VGSO166)
C	PB040235		1/2NPT TO 3/8 FLARE COUPLING
D	PB040146		1/2 X 3/8 FLARE ADAPTER (VGBQ)
E	PB020227		HIGH PRESSURE LP HOSE
F	PA070007		LP TANK REGULATOR (VGBQ)

Ref #	Part Number	Qty.	Description
F	PA070007		LP TANK REGULATOR (VGBQ)
G	PA010138		CYLINDER CONNECTION
NI	G3004936		REGULATOR ASSY - NAT (P1 GRILL)
A	PA070006		PRESSURE REGULATOR - NATURAL
B	PB040046		1/2 CLOSE NIPPLE (VGSO166)
C	PB040240		1/2 FLARE ADAPTOR
D	PB040166		FEMALE COUPLER (PHASE 1 GRILL)



Ref #	Part Number	Qty.	Description
1	B2005365		PHASE II REAR CART UPPER
2	B20010699		QSC30 MOUNTING BRACKET
	B20014413		NEW HINGE BRACE
3	B2006770		GRILL CART BACK 41
4	B2009113		CART TOP
5	B2009114		SMOKER SHELF
6	B3005378		SIDE SHELF PH II BQC530TSS
7	B2007241		UPPER CART SIDE - LH
8	PC020031		FOLD DOWN SHELF BRACKET
9	B2007211		CART SIDE BRACE 41 & 53
10	B2009105		LOWER CART SIDE LH
11	B2007415		HINGE BAR - BQC41
12	B2005377		TANK DRAWER
13	PK000018		TANK DRAWER SLIDE (RH OR LH) BBQ GRILL
14	B2009107		LP FLOOR BRACKET
15	B20011220		SMOKER SHELF BRACE
16	B2006771		QSC41 INNER CART WALL
17	PC080010		SLIDE
18	B2005376		41 SLIDE BRACE
19	B2009106		LOWER CART SIDE RH
20	B2007244		UPPER CART SIDE - RH
21	PM010361		VCQS CORNER FRAME LH
22	PM010360		VCQS CORNER FRAME RH
23	B3009108		CART DRAWER
24	B2009115		CART BRACE
25	B2009111		LP I/S DOOR
26	PC020173		DOOR HINGE RECEIVER (BBQ)
27	PC020172		DOOR HINGE (BBQ)
28	B2005386		CART HANDLE SPACER
29	B2009109		CART DRAWER I/S DOOR
30	B2009110		CART DRAWER O/S DOOR
31	PE030001		BRACKET, DOOR, HANDLE
	PE030001PVD		END CAP DOOR HANDLE XBR
32	PE030060		WARMING DRAWER HANDLE SS VEWD172
	F0004886		WARMING DRAWER HANDLE XBRX VEWD172
33	B2009112		QSC41 OUTER DOOR
34	PE030164		17.500 DOOR HANDLE QSC41
	PE030164PVD		17.500 DOOR HANDLE QSC41 XPVDX
35	B2009832		PHASE II CASTER BRACE
36	B3009104		CART BOTTOM
37	PC030021		CASTER, FIXED
38	PC030020		CASTER, SWIVEL