

# SCCG50 & SCCP50 Service Parts

This is the illustrated parts list for the SCCG50M and the SCCP50M Residential Ice Machines.

When ordering a service part, always refer to the complete model number of the equipment being repaired to be sure of obtaining the correct part. Many times there are slight differences between models, and having the complete model number will aide in selecting the correct part.

The condenser fan motor, fan blade, fan motor brackets and condenser shroud changed in August 2009. The model number also changed to an A series: SCCG50MA-1. and SCCP50MA-1. In early 2019 the compressor change along with some of the EEPROM values in the controller represented in the B series: SCCG50MB-1 and SCCP50MB-1

Painted models were discontinued in 2013.

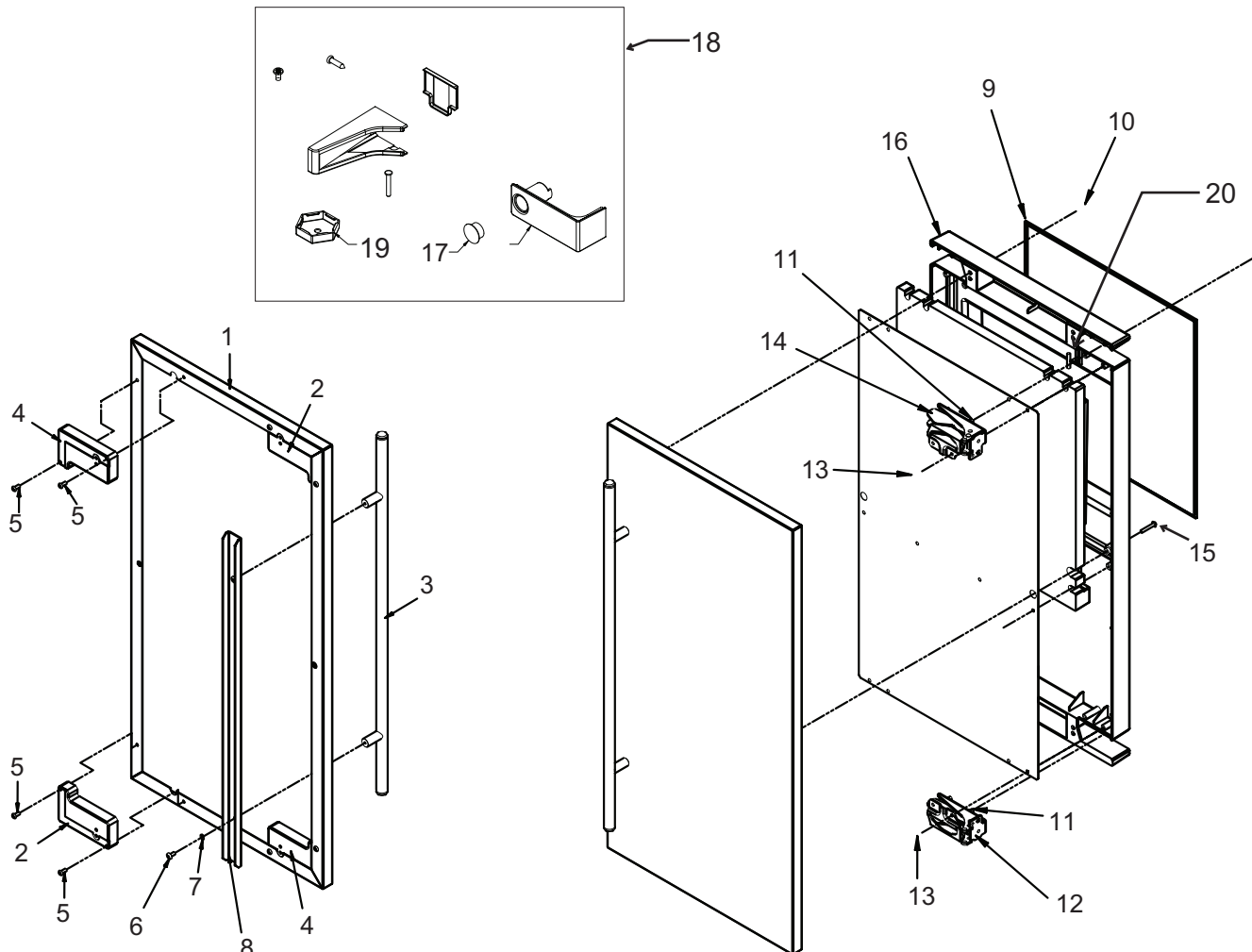
Cabinet changed November 2014 to add service panel.

## Table of Contents

|                                    |        |
|------------------------------------|--------|
| Door . . . . .                     | Page 2 |
| Cabinet . . . . .                  | Page 3 |
| Reservoir and Spray Pump . . . . . | Page 4 |
| Refrigeration. . . . .             | Page 5 |
| Under Bin Parts . . . . .          | Page 6 |
| Control System . . . . .           | Page 7 |
| Schematic Diagram . . . . .        | Page 8 |
| Wiring Diagram . . . . .           | Page 9 |

# SCCG50 & SCCP50 Service Parts

## Door

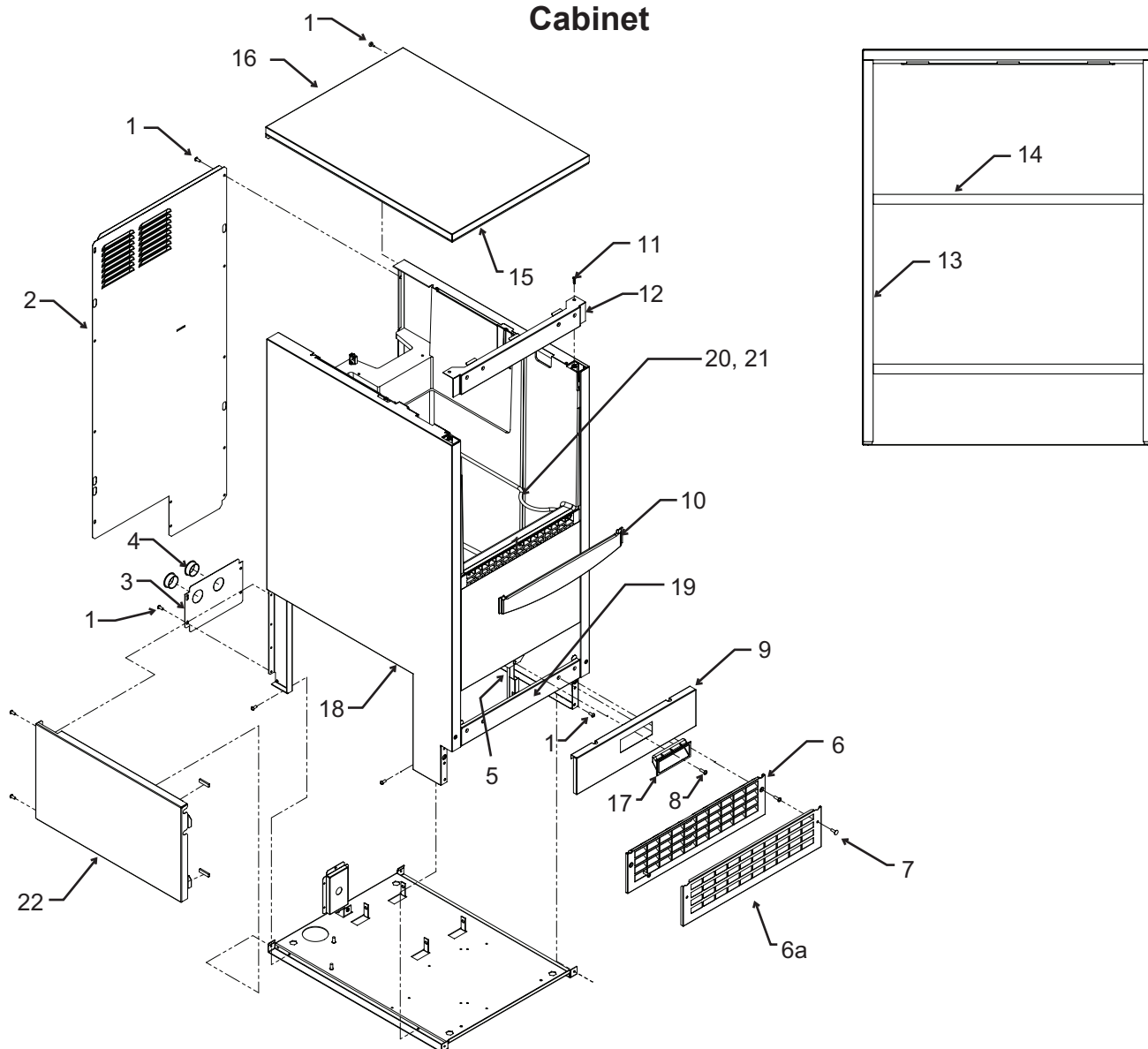


Items 17 and 19 included with item 18, package shipped loose in bin.

| Item Number | Part Number | Description                                   | Item Number | Part Number | Description  |
|-------------|-------------|---|-------------|-------------|--|
| 1           |             | Door panel kits. Kits include items 1 thru 8. | 7           | 03-1410-07  | Lockwasher   |
|             | KDFW        | White panel, white handle                     | 8           | A39390-001  | Support bracket                                      |
|             | KDFWS       | White panel, SS handle                        | 9           | 13-0949-03  | Door gasket  |
|             | KDFB        | Black panel, black handle                     | 10          | 03-1404-40  | Screw  |
|             | kDFBS       | Black panel, SS handle                        | 11          | 03-3818-01  | Screw - hinge to cabinet                             |
|             | KDFS        | SS panel, SS handle                           | 12          | 02-3866-04  | Hinge - top left/bottom right                        |
| 2           | 02-4433-01  | Corner block, RH                              | 13          | 03-1404-24  | Screw - hinge to door                                |
| 3           | 02-4430-42  | Handle, white                                 | 14          | 02-3866-03  | Hinge  |
|             | 02-4430-52  | Handle, black                                 | 15          | 03-1403-67  | Screw  |
|             | 02-4430-01  | Handle, SS                                    | 16          | A39513-001  | Door assembly, does not include door panel or hinges |
| 4           | 02-4433-02  | Corner block, LH                              | 17          | 02-1875-07  | Hole plug  |
| 5           | 03-1531-01  | Screw   | 18          | 02-4474-01  | Hinge package  |
| 6           | 03-3811-01  | Screw   | 19          | 02-4415-20  | Leg cap, pack of 4                                   |
|             |             |   | 20          | 11-0580-01  | Magnet, door switch Top Is indicated by paint mark.  |

# SCCG50 & SCCP50 Service Parts

## Cabinet

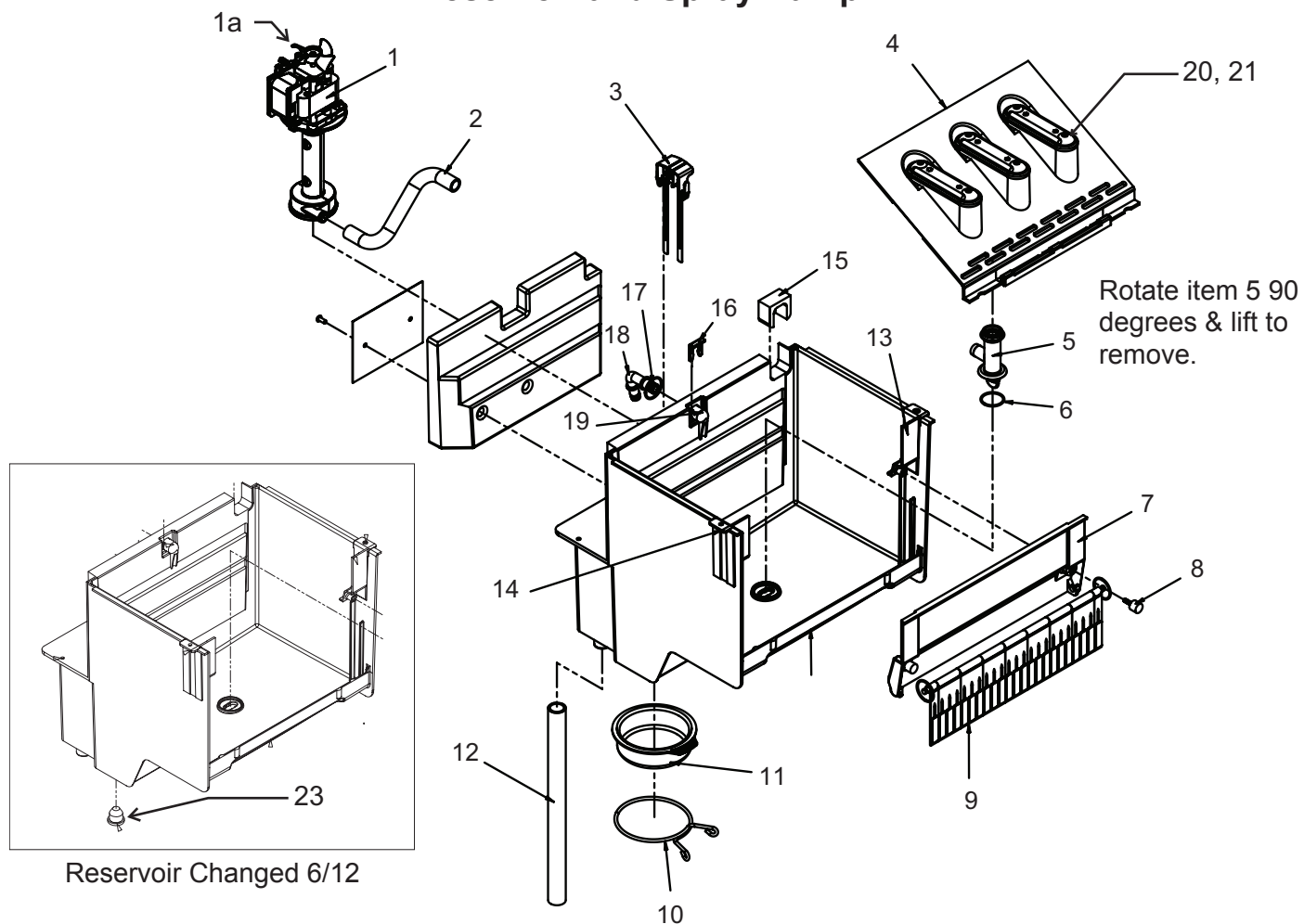


| Item Number | Part Number | Description                     | Item Number | Part Number | Description                 |
|-------------|-------------|---------------------------------|-------------|-------------|-----------------------------|
| 1           | 03-1404-10  | Screw                           | 12          | A39364-003  | Top hinge brkt, RH SS       |
| 2           | A39363-001  | Back panel                      |             | A39364-007  | Top hinge brkt, L & R SS*   |
| 3           | A39389-001  | Utility routing bracket         | 12a         | 03-3813-01  | Screw to fill holes         |
| 4           | 12-1213-11  | Snap bushing                    | 13          | 13-0943-05  | Gasket                      |
| 5           | A39392-001  | Srv panel mntg bracket          | 14          | 13-0943-03  | Gasket strip                |
| 6           | 02-4390-01  | Kickplate                       | 15          | 02-4426-01  | Insulation pad              |
| 6a          | A39469-001  | Kickplate, SS for outdoor model | 16          | A39362-003  | Top panel, SS               |
| 7           | 03-1403-86  | Screw                           | 17          | 03-1403-86  | Screw                       |
| 8           | 02-4441-01  | Panel handle                    | 18          | A39618-001  | SS cabinet & bin            |
| 9           | A39381-003  | Service panel, SS               | 19          | A39385-003  | Btm hinge brkt, L & R SS**  |
| 10          | 02-4392-01  | Bin edging                      | 20          | A34816-001  | Bin stat bracket/scoop hldr |
| 11          | 03-3836-03  | Screw                           | 21          | 02-4391-01  | Scoop                       |
|             |             |                                 | 22          | A39615-001  | Service panel               |

\* changed 1/12 to add left and right hinge mounting.  
Painted parts no longer available.

# SCCG50 & SCCP50 Service Parts

## Reservoir and Spray Pump



| Item Number | Part Number | Description                     |
|-------------|-------------|---------------------------------|
| 1           | 12-2986-21  | Water pump, incl item 1a        |
| 1a          | 02-1719-00  | Fan blade                       |
| 2           | 02-4379-01  | Pump discharge hose             |
| 3           | A39030-023  | Water probe                     |
| 4           | 02-4371-03  | Spray platform                  |
| 5           | 02-4368-01  | Water Tee                       |
| 6           | 13-0617-11  | O-ring                          |
| 7           | 02-4365-01  | Front bracket                   |
| 8           | 03-3892-01  | Thumb screw                     |
| 9           | A39357-001  | Curtain                         |
| 10          | 02-4383-01  | Clamp, not used after 6/12      |
| 11          | 02-4369-01  | Drain cap, not used after 6/12. |
|             | 02-4428-01  | Drain tube                      |

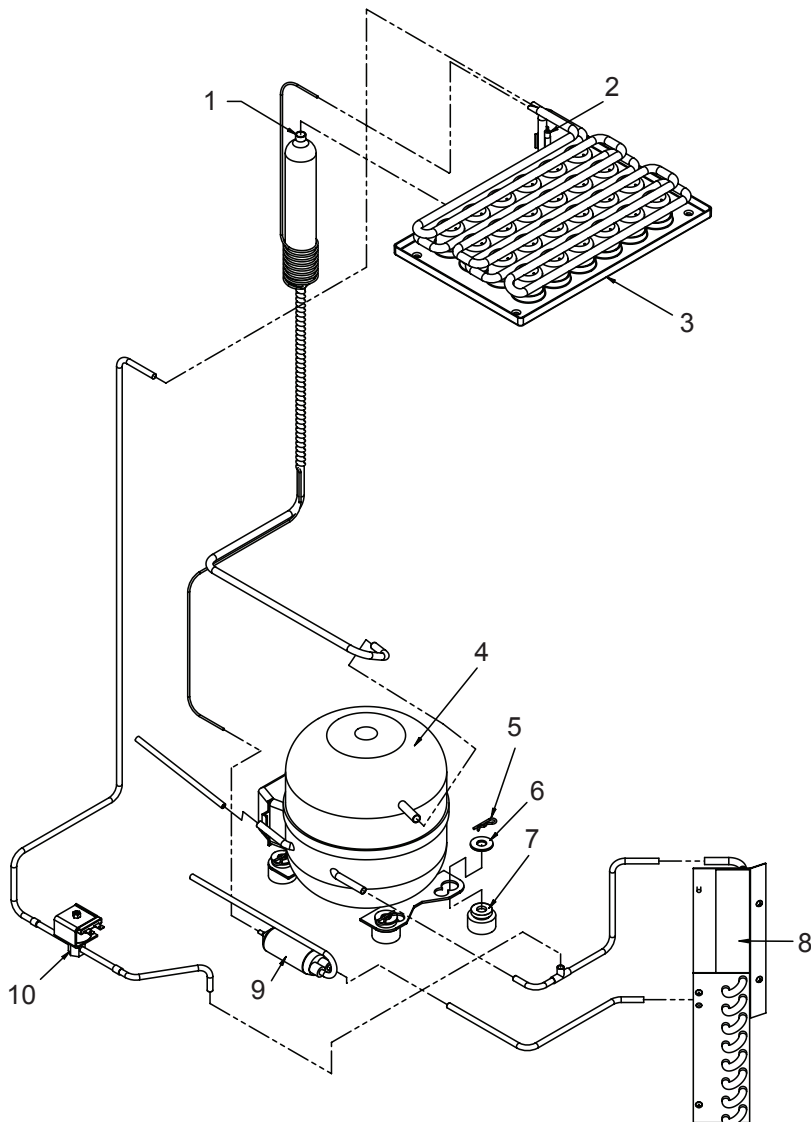
|    |            |  |
|----|------------|--|
| 13 | 02-4375-02 | Evap bracket, left   |
| 14 | 02-4375-01 | Evap bracket, right  |
| 15 | 02-4475-01 | Grommet  |
| 16 | 02-4381-03 | Clip   |
| 17 | 13-0617-04 | O-ring   |
| 18 | 02-4381-01 | Barbed fitting   |
| 19 | 02-4381-02 | Spout  |
| 20 | 02-4373-01 | O-ring   |
| 21 | 02-4370-21 | Spray nozzle, kit. Set of 3 nozzles, o-rings, screws and nuts. |

Item 22 is a plastic cover that fits over the evaporator tubing and cups. It was added in 2013

|    |            |                           |
|----|------------|---------------------------|
| 22 | 02-4726-01 | Evaporator cover          |
| 23 | 13-0840-01 | Drain plug, changed 6/12. |

# SCCG50 & SCCP50 Service Parts

## Refrigeration

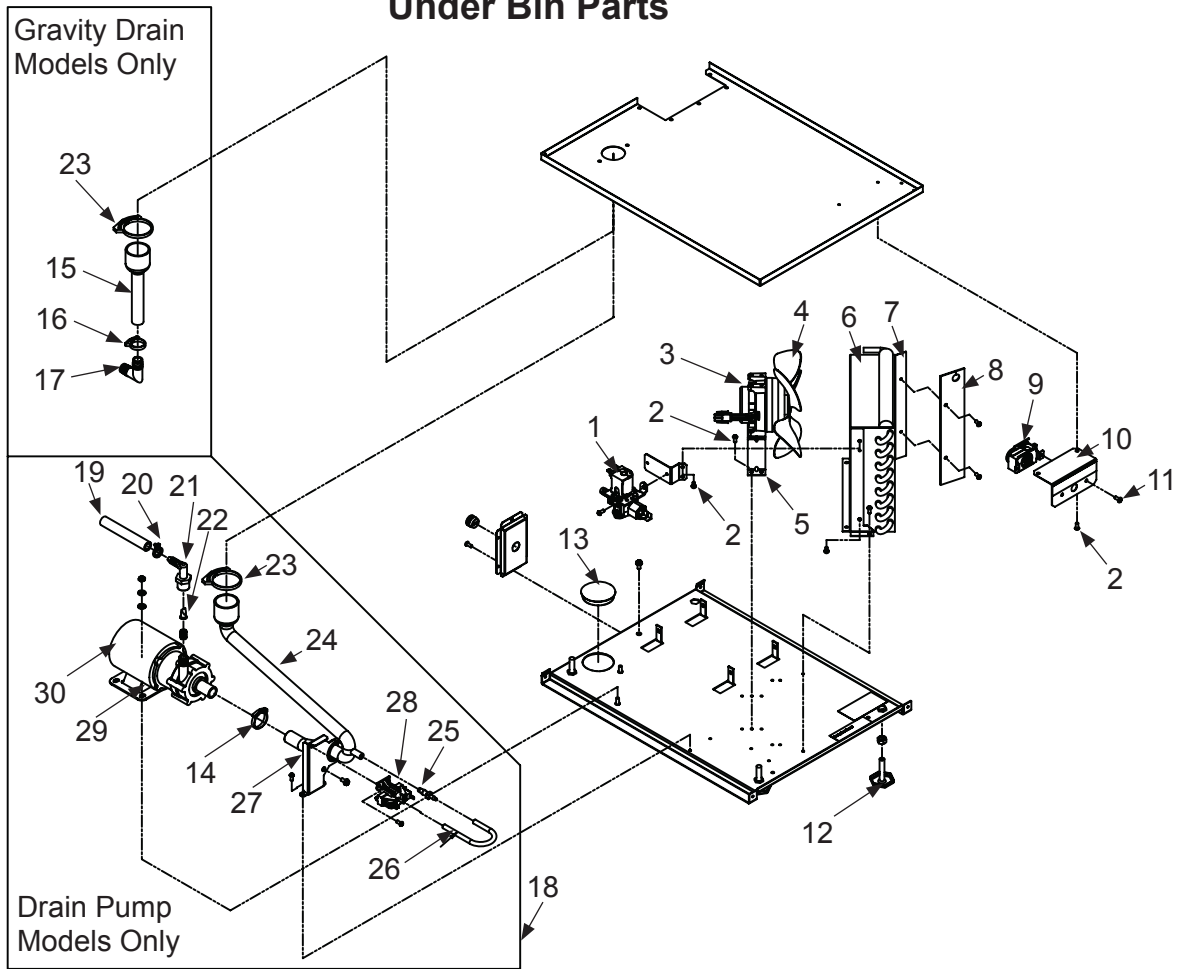


| Item Number | Part Number | Description   | Item Number | Part Number | Description   |
|-------------|-------------|---|-------------|-------------|---------------|
| 1           | A39384-001  | Suction line accumulator assy                       | 6           | 03-1407-08  | Washer        |
| 2           | 11-0577-01  | Thermistor  | 7           | 18-4700-28  | Grommet       |
| 2a          | 03-1711-01  | Thermister holder                                   | 8           | 18-8940-01  | Condenser     |
| 3           | 02-4376-01  | Evaporator  | 9           | 02-4416-01  | Drier         |
| 4           | 18-8939-21  | Compressor* <b>A model</b><br>Tecumseh TPB0413Y-AA  | 10          | 11-0562-21  | Hot gas valve |
| 4           | 18-8994-21  | Compressor* <b>B model</b><br>Tecumseh AE3425Y-AA1A | 10a         | 11-0562-22  | HGV coil      |
| 4a          | 18-8939-51  | A & B Model Overload                                |             |             |               |
| 4b          | 18-8939-52  | A Model Relay                                       |             |             |               |
| 4bb         | 18-8994-52  | B Model Relay                                       |             |             |               |
| 5           | 03-3821-01  | Clip  |             |             |               |

\*Compressors includes overload, relay and drier

# SCCG50 & SCCP50 Service Parts

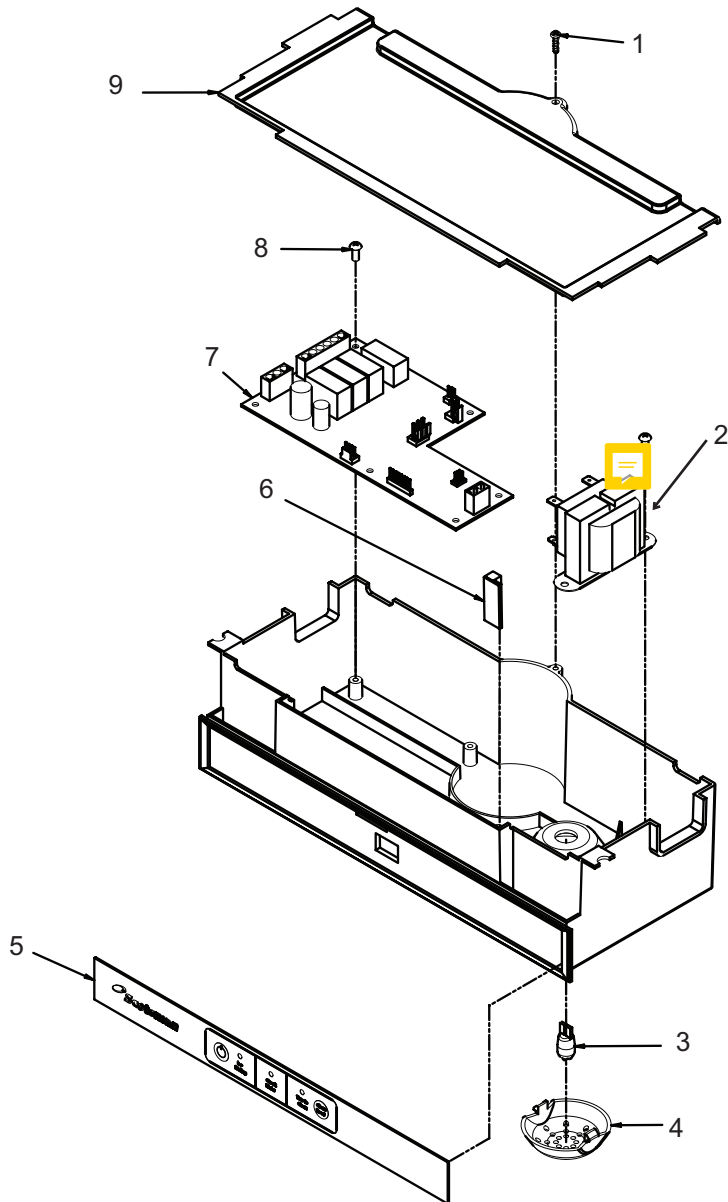
## Under Bin Parts



| Item Number  | Part Number | Description                  | Item Number | Part Number | Description        |
|--|-------------|------------------------------|-------------|-------------|--------------------|
| 1  | 12-2990-01  | Inlet water sol valve        | 12a         | 02-4415-01  | Leg cap            |
| 2  | 03-1531-01  | Screw                        | 13          | 02-1875-18  | Hole plug          |
| 3  | 12-2396-02  | Fan motor                    | 14          | 02-2814-11  | Hose clamp         |
|  | 12-3024-01  | Fan motor, A,B series        | 15          | 02-4412-01  | Drain hose         |
| 4  | 18-8941-01  | Fan blade                    | 16          | 02-2814-08  | Hose clamp         |
|  | 02-4197-01  | Fan blade, A,B series        | 17          | 16-0671-01  | Elbow              |
| 5  | A39555-001  | Fan motor bracket            | 18          | A39462-021  | Pump kit           |
| A39555-001 bracket attaches to shroud. Use on prior models requires 2 brackets & A39359-001. |             |                              | 19          | A37334-001  | Discharge hose     |
|  | A39556-001  | Fan motor bracket A,B series | 20          | 02-0534-02  | Hose clamp         |
| 6  | A39359-001  | Fan shroud                   | 21          | 02-3522-01  | Elbow              |
|  | A39460-001  | Fan shroud, A series         | 22          | 02-3374-01  | Check valve        |
| 7  | 13-0909-01  | Gasket, order 1 & cut to fit | 23          | 02-2814-13  | Hose clamp         |
| 8  | 02-4450-01  | Air baffle                   | 24          | 02-4413-01  | Drain tube         |
| 9  | 11-0617-21  | Thermostat                   | 25          | 02-3406-01  | Barbed connector   |
| 10   | A39379-001  | Thermostat bracket           | 26          | 05-0591-01  | Switch hose        |
| 11   | 03-1403-16  | Screw                        | 27          | A39370-001  | Switch bracket     |
| 12   | 03-1608-01  | Leg leveler                  | 28          | 11-0504-01  | Pressure switch    |
|  |             |                              | 29          | 03-3904-01  | Spring             |
|  |             |                              | 30          | 12-2503-21  | Pump & motor only  |
|  |             |                              | 30a         | 12-3001-01  | Drain pump harness |

# SCCG50 & SCCP50 Service Parts

## Control System



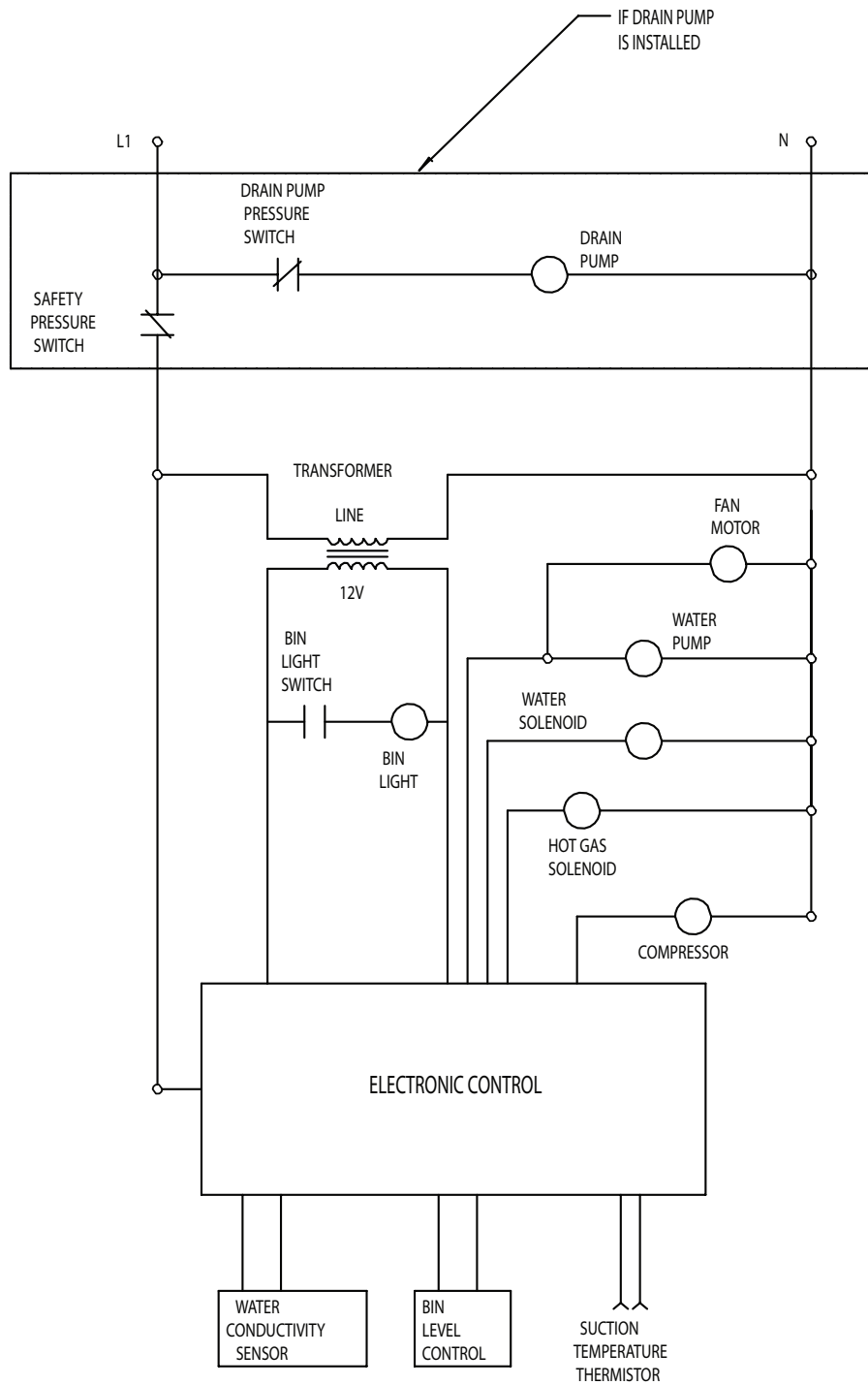
| Item Number | Part Number | Description                               |
|-------------|-------------|---|
| 1           | 03-3836-03  | Screw                                     |
| 2           | 12-2924-01  | Transformer                               |
| 3           | 12-3077-01  | Bulb                                      |
| 4           | 02-4380-01  | Light cover                               |
| 5           | 11-0574-01  | Switch panel                              |
| 6           | 12-3076-01  | Bin light switch, bulb socket and harness |
| 7           | 11-0573-25  | Controller A Model                        |
|             | 11-0573-52  | Controller B Model                        |
| 8           | 03-1531-01  | Screw                                     |
| 9           | 02-4386-01  | Cover                                     |

### Not Shown:

|  |            |                           |
|--|------------|---------------------------|
| NS1  | 12-3003-01 | Bin stat harness          |
| NS2  | 12-3000-02 | Hi voltage harness, lower |
| NS3  | 12-3000-01 | Hi voltage harness, upper |
| <b>Note: If replacing the lower harness, always replace the upper one too.</b> |            |                           |
| NS4  | 12-2992-01 | Water sensor harness      |
| NS5  | 12-1638-21 | Power Cord                |

# SCCG50 & SCCP50 Service Parts

## Schematic Diagram



SWITCHES ON THIS UNIT  
SHOWN IN FREEZE CYCLE  
WITH DRAIN PUMP IN OPERATION  
AND BIN DOOR CLOSED



# SCCG50 & SCCP50 Service Parts

## Wiring Diagram

