

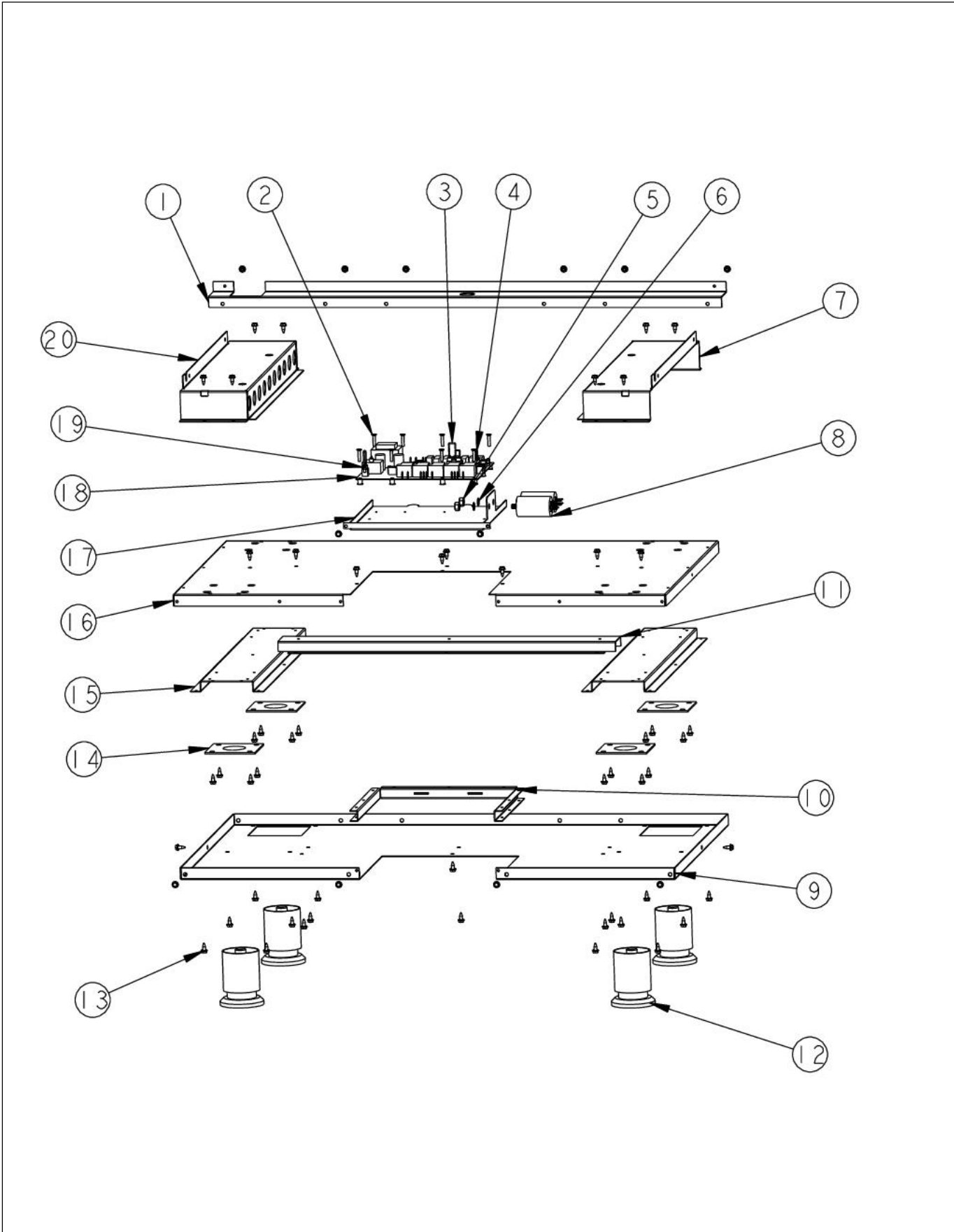
**VDSC536-6B**



# Contents

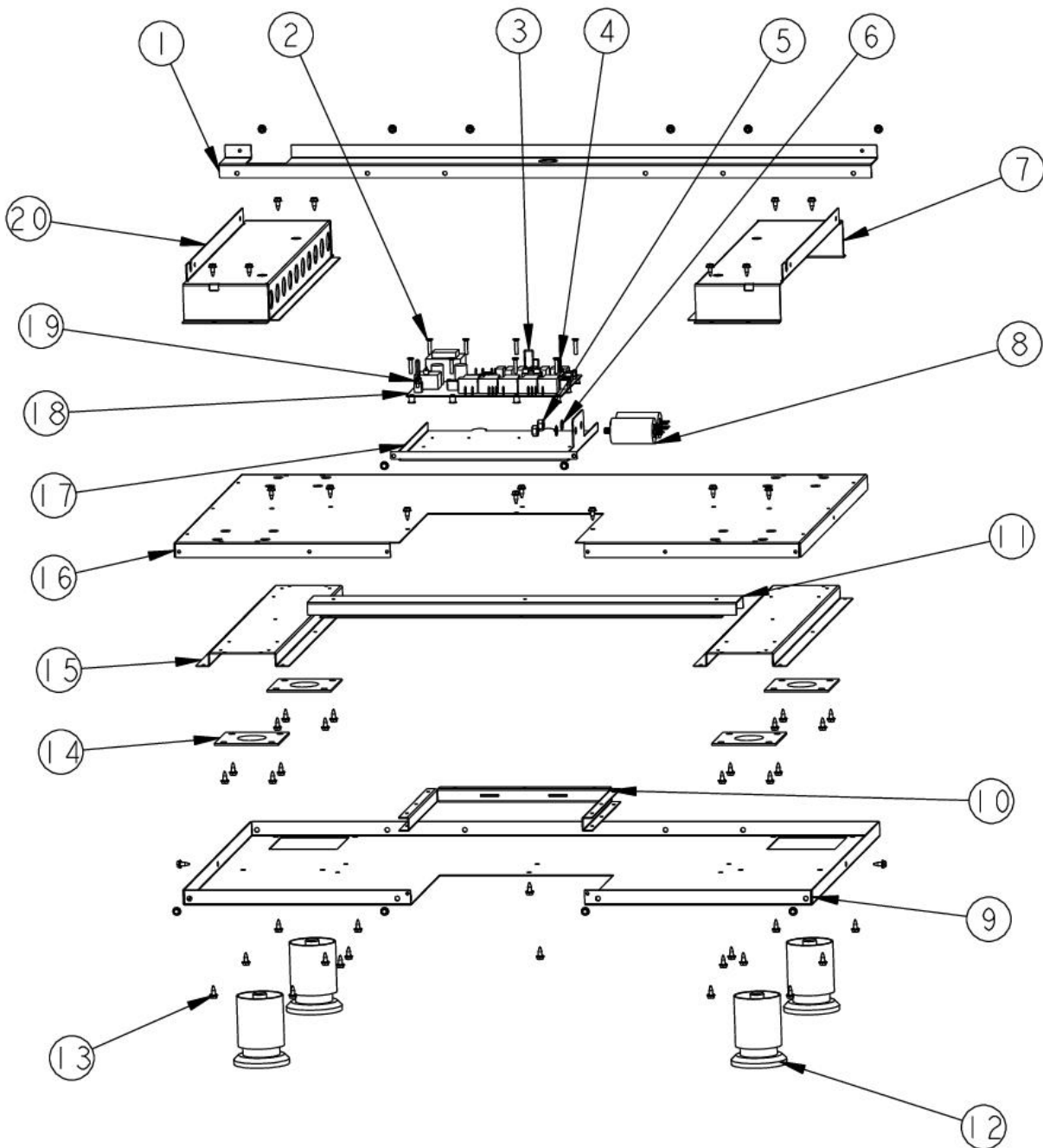
BA	1
DOOR ASSY	2
BURNER BOX	3
BURNER SURFACE	4
CONTROL PANEL	5
DOOR ASSY	6
GRILL ASSY	7
LOWER UNIT AND SIDE PANELS	8
OVEN MODULE	9
REAR AREA	10
WIRING	10
Appendix A:Pages Index	A
Appendix B:Parts Index	B

SE ASSY



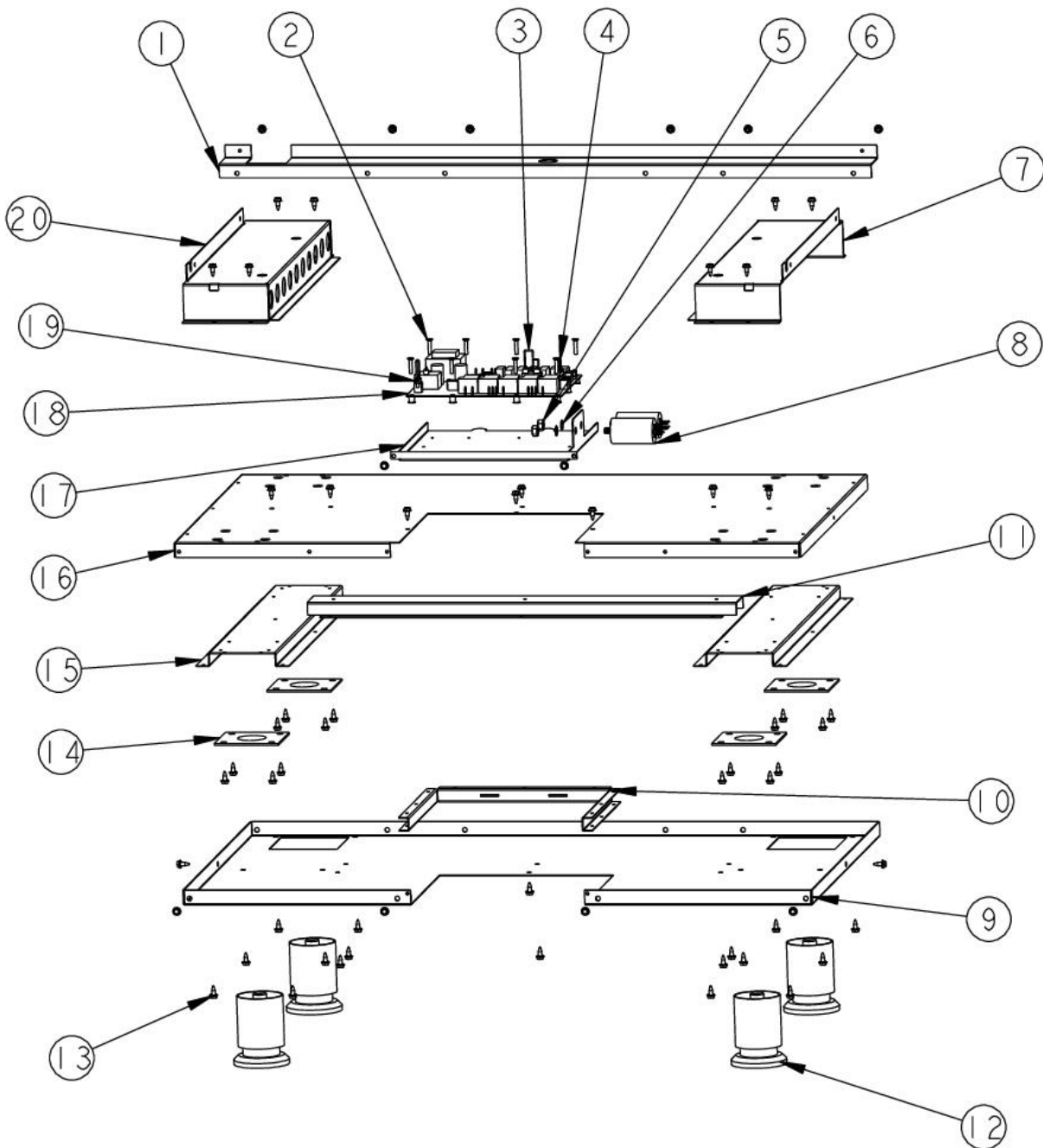


Item	Part No.	Name	Qty	Uom	NOTES
1	004503-000	BASE, LEDG, BACK, 36"	1	EA	
2	PD020043	PHILLIPS C.S. TYPE F	8	EA	
3	PE070734	SINGLE OVEN HEADER	1	EA	
4	009632-000	MODEL 10 HEADER	1	EA	
5	PD030172	M8 X 1.25MM NUT	2	EA	
6	PD040164	5/16 INTERNAL TOOTH LOCK WASHER TYPE A	2	EA	
7	003761-000	OVEN MODULE SUPPORT CHANNEL, RH	1	EA	
8	PE050247	CAPACITOR	2	EA	
<p>Comments for Part Num. PE050247</p> <p>bradleysapplianceservice@shaw.ca on Feb 2, 2016</p> <p>SUBS TO: 036047-000</p>					
9	003326-000	PLATE, BASE, LWR, 36"	1	EA	
10	003054-000	BASE CENTER CUTOUT STIFFENER	1	EA	
11	003327-000	BRACE, BASE, 36"	1	EA	
12	PC030031	LEG	4	EA	
13	003860-000	10-18 x .500 FASTNR,SCR,HXWH,STL,ZPLT	66	EA	
14	PC030007	LEG PLATE - 3/4" THREADED HOLE	4	EA	
15	003053-000	BASE LEG SUPPORT CHANNEL	2	EA	
16	003328-000	PLATE, BASE, UPR, 36"	1	EA	
17	003050-000	CONTROL BOARD MOUNTING PLATE	1	EA	
Not Shown	NOTE	(BEFORE 7/28/10)		EA	
17	015096-000	PLATE, MTG, EOC4 CONTROL BOARD	1	EA	
Not Shown	NOTE	(ON OR AFTER 7/28/10)		EA	
18	000621-000	CONTROL BOARD	1	EA	





Item	Part No.	Name	Qty	Uom	NOTES
Comments for Part Num. 000621-000					
bradleysapplianceservice@shaw.ca on Jul 29, 2016					
SUBS TO: 002406-000 MECHANICAL CONTROL BOARD KIT					
Not Shown	NOTE	(BEFORE 7/28/10)		EA	
Not Shown	NOTE	(ON OR AFTER 7/28/10)		EA	
18	046142-000	CONTROL,BD,EOC4, CB	1	EA	
Not Shown	NOTE	AFTER 2/4/13		EA	
NI	021340-000	LINEAR POWER SUPPLY, SINGLE	1	EA	
Not Shown	NOTE	(ON OR AFTER 7/28/10)		EA	
NI	024909-000	SHIELD, WRG	1	EA	
19	000915-000	LIMIT JUMPER	1	EA	
20	003763-000	OVEN MODULE SUPPORT CHANNEL, LH	1	EA	
NI	005382-000	KICKPLATE, SS, VDSC36"	1	EA	
NI	010989-002	KICKPLATE, BK	1	EA	
NI	010989-003	KICKPLATE, BT 36"	1	EA	
NI	010989-004	KICKPLATE, SG 36"	1	EA	
NI	010989-005	KICKPLATE, 36" GG	1	EA	
NI	010989-006	KICKPLATE, 36" WH	1	EA	
NI	010989-008	KICKPLATE, BU 36"	1	EA	
NI	010989-009	KICKPLATE, LE 36"	1	EA	
NI	010989-010	KICKPLATE, MJ 36"	1	EA	
NI	010989-012	KICKPLATE, VB 36"	1	EA	
NI	010989-013	KICKPLATE - CB	1	EA	
NI	010989-015	KICKPLATE, PL 36"	1	EA	
NI	010989-016	KICKPLATE, CH 36"	1	EA	
NI	010989-017	KICKPLATE, TP 36"	1	EA	
NI	010989-018	KICKPLATE, CW 36"	1	EA	
NI	010989-019	KICKPLATE, OG 36"	1	EA	
NI	010989-020	KICKPLATE, GM 36"	1	EA	



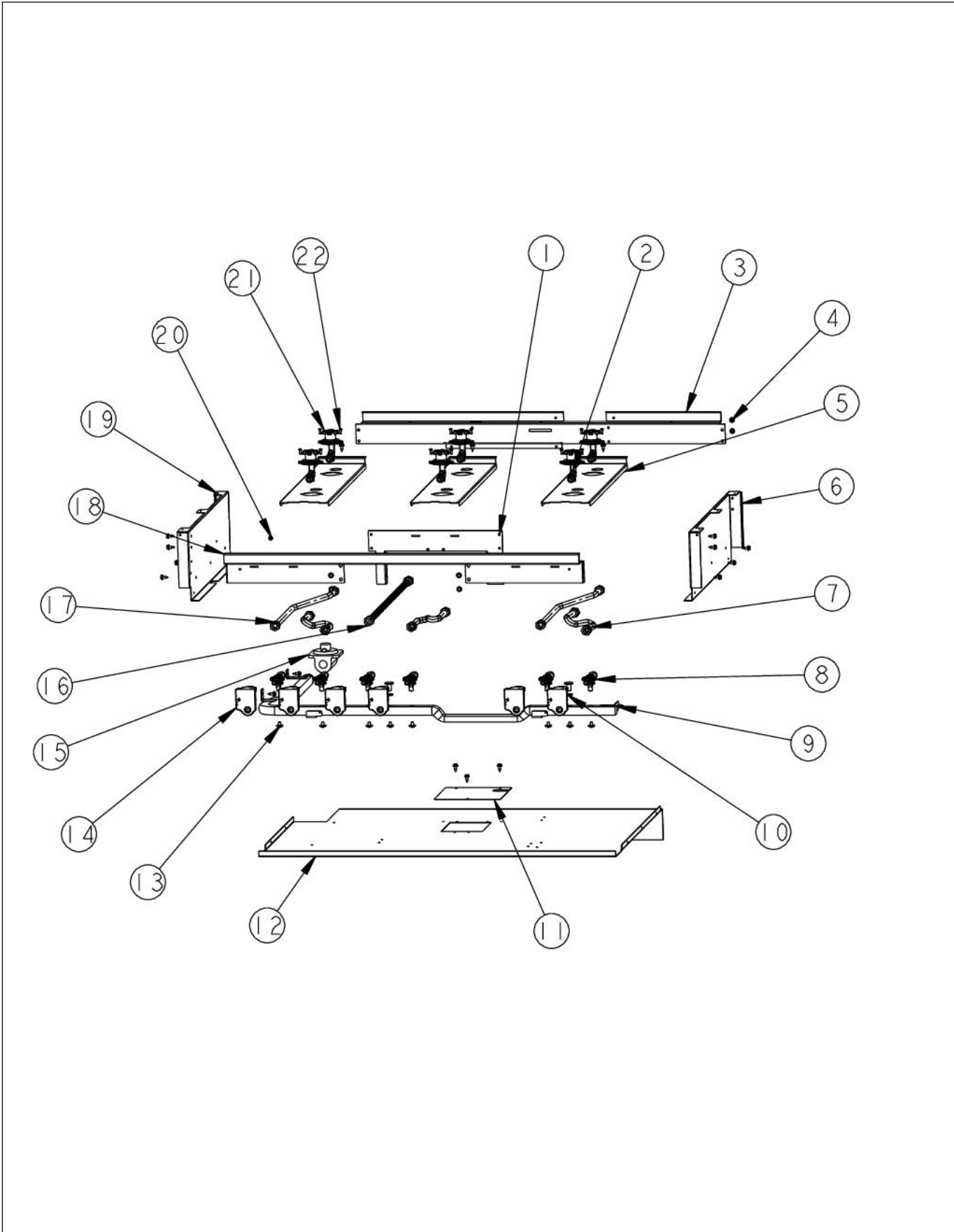


VDSC5:



Item	Part No.	Name	Qty	Uom	NOTES
NI	010989-021	KICKPLATE, SA 36"	1	EA	
NI	010989-022	KICKPLATE, SE 36"	1	EA	
NI	010989-023	KICKPLATE, IB 36"	1	EA	
NI	010989-024	KICKPLATE, AR 36"	1	EA	
NI	010989-025	KICKPLATE, RR 36"	1	EA	
NI	010989-026	KICKPLATE, PM 36"	1	EA	
NI	010989-027	KICKPLATE, MS 36"	1	EA	

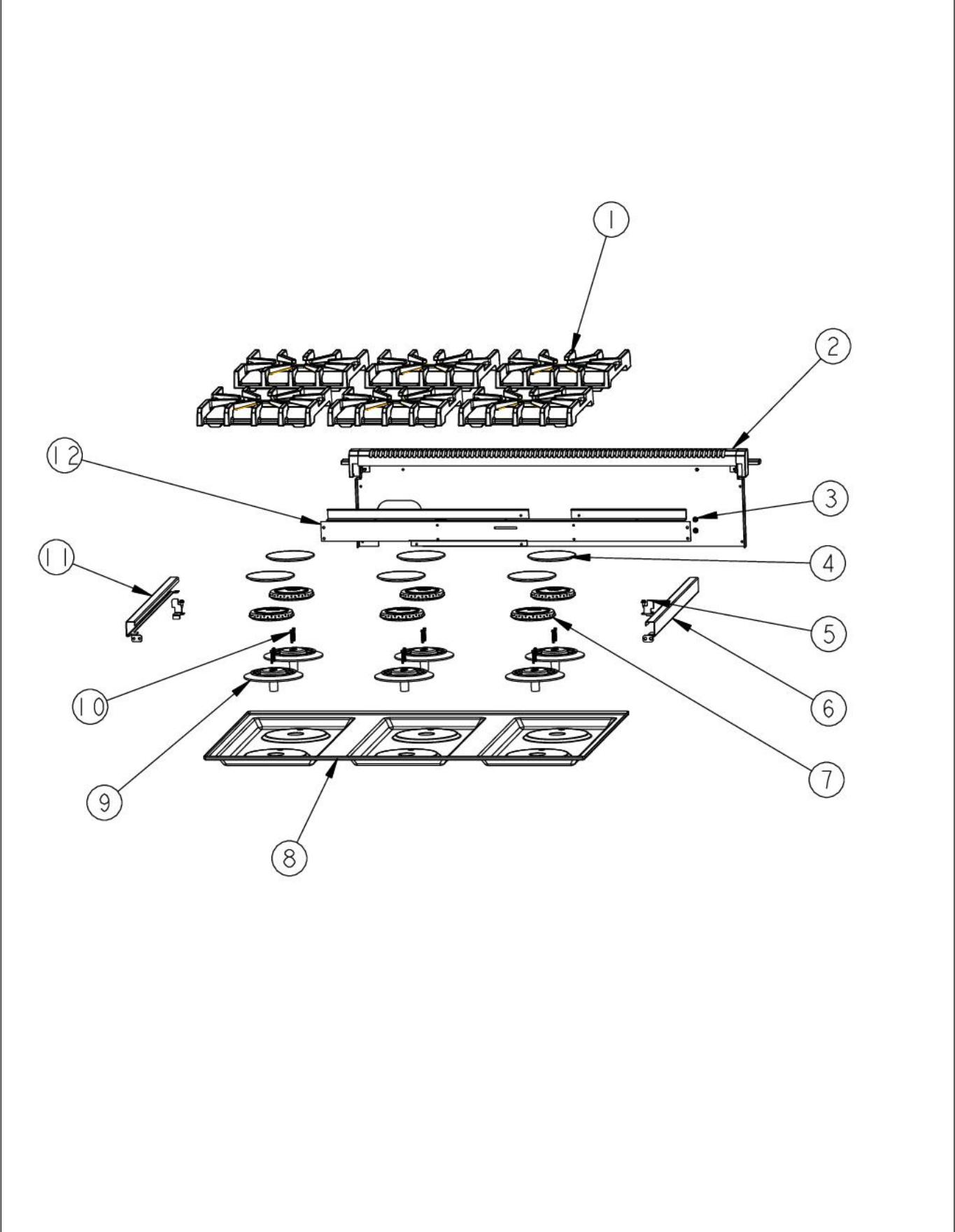
# CORNER BOX





Item	Part No.	Name	Qty	Uom	NOTES
1	008637-000	ADAPTER BRACKET, FRONT SUPT	1	EA	
2	001394-041	18500 BTU NAT JETHOLDER	1	EA	
2	001394-044	16.6 K BTU LP JETHOLDER	1	EA	
3	004602-000	REAR SUPPORT, BURNER BOX 36"	1	EA	
4	003860-000	10-18 x .500 FASTNR,SCR,HXWH,STL,ZPLT	27	EA	
5	002923-000	BURNER MODULE SUPPORT	2	EA	
6	002755-000	BURNER BOX SIDE, RH	1	EA	
7	PB020192	10" FLEX TUBING W/CONNECTORS	3	EA	
8	006015-000	VALVE, BRS, SEALED TOP - ISPHORDING	1	EA	
9	005480-000	MANIFOLD, GAS, VDSC36" - 6B	1	EA	
10	002884-000	MANIFOLD PLUG	3	EA	
11	024398-000	COVER,ACS,DSI	1	EA	
12	024302-000	PANEL,BNR,BOT,BOX, 36" VGRT	1	EA	
13	PD010012	VALVE BOLT 1/4-20 UNC-2B 5/16" M.S.	7	EA	
14	PA020058	IRIS SINGLE SPARK MODULE	5	EA	
15	PA070001	PRESSURE REGULATOR (NAT.)	1	EA	
15	000714-000	LP REGULATOR	1	EA	
16	007726-000	21" FLEX TUBING W/CONNECTORS	1	EA	
17	PB020193	16" FLEX TUBING W/CONNECTORS	2	EA	
18	004603-000	FRONT SUPPORT, BURNER BOX 36"	1	EA	
19	003481-000	BURNER BOX SIDE, LH	1	EA	
20	PD020010	Green Grounding Screw	1	EA	
21	001394-042	15000 BTU NAT JETHOLDER	5	EA	
21	001394-046	12.5 K BTU LP JETHOLDER	5	EA	
22	PD020076	6-32 X 3/8" PHILL PAN MS	8	EA	

# CORNER SURFACE



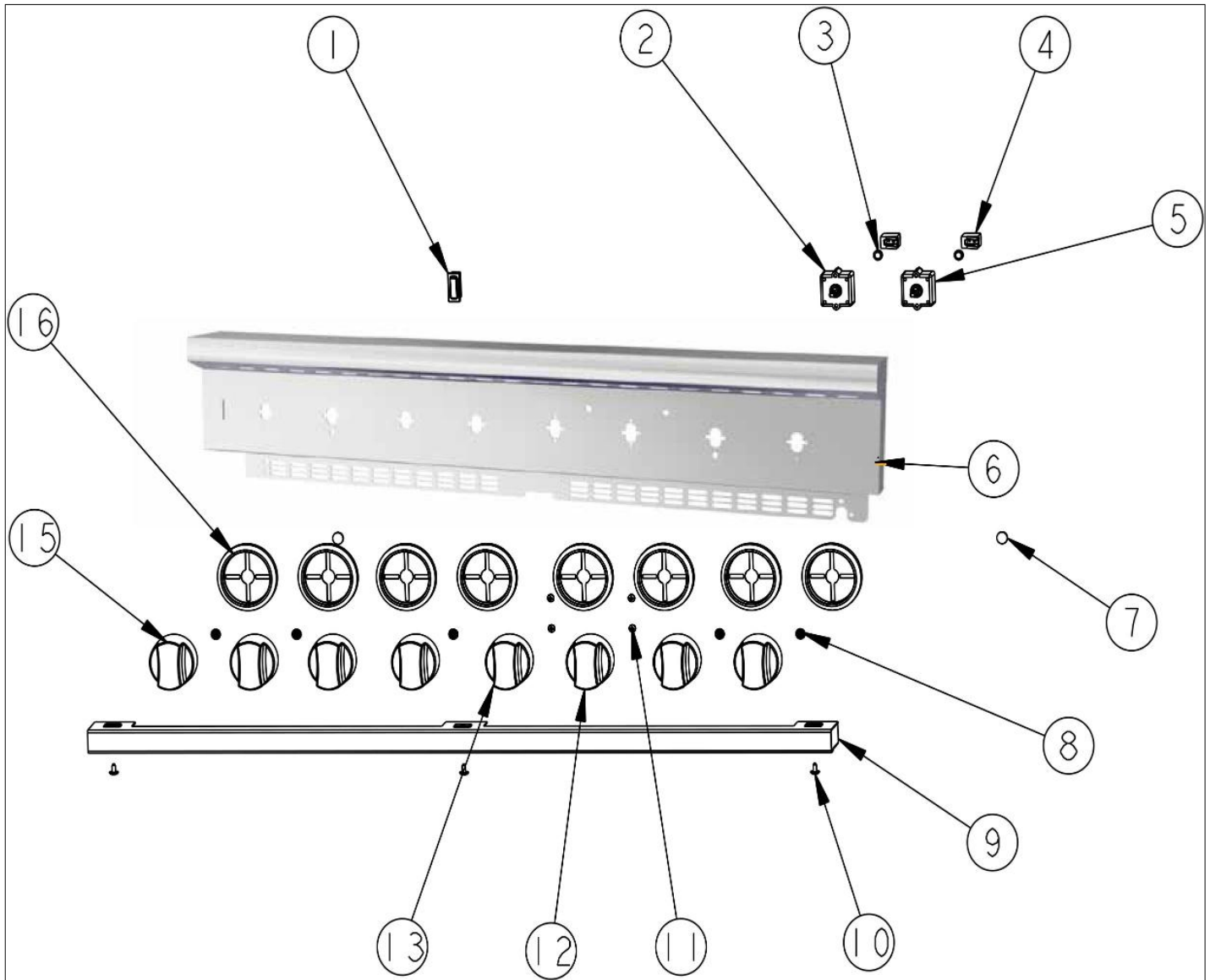


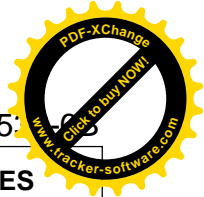
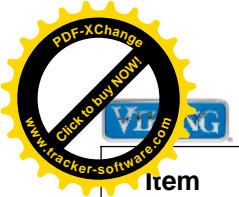
VDSC5



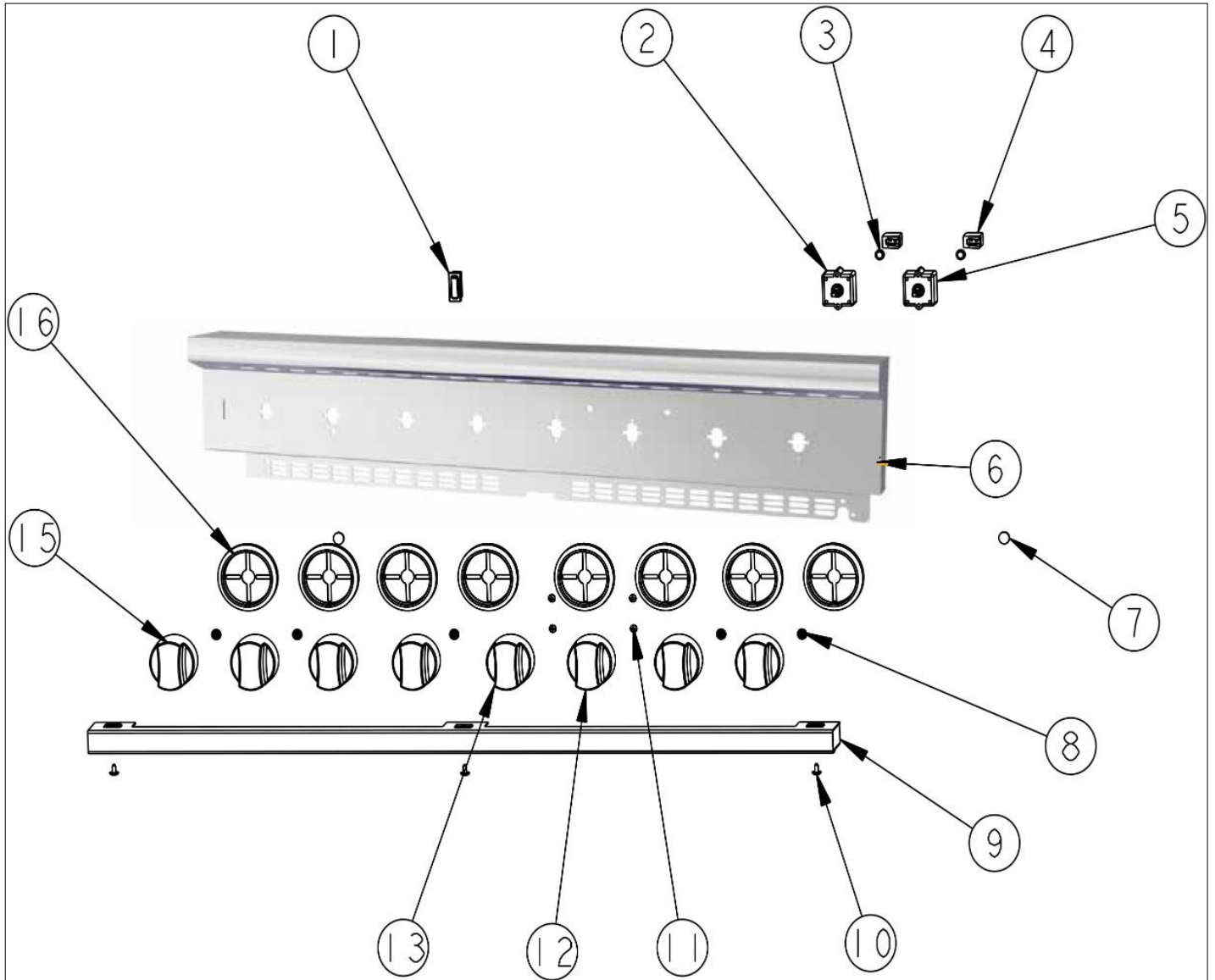
Item	Part No.	Name	Qty	Uom	NOTES
1	007323-000	BURNER GRATE	6	EA	
2	006900-000	ISLAND TRIM, ASM, 36" CUSTOM	1	EA	
3	003860-000	10-18 x .500 FASTNR,SCR,HXWH,STL,ZPLT	2	EA	
4	PA080083	Burner Cap - BK	6	EA	
5	004021-000	SUPPORT,TRIM,SIDE	2	EA	
6	002920-000	SIDE TRIM, RH - STAINLESS	1	EA	
7	006706-000	B6 REV SEALED BURNER	6	EA	
8	E9108439BK	Main Top Assembly (6B) - BK	1	EA	
9	003322-041	SEALED BURNER BASE, PAINTED FINISH	6	EA	
10	003606-000	#6-32 SOCKET HEAD SCREW	12	EA	
11	003649-000	SIDE TRIM, LH - STAINLESS	1	EA	
12	008840-000	BURNER BOX ASSY, VDSC536- 6B	1	EA	

# CONTROL PANEL





Item	Part No.	Name	Qty	Uom	NOTES
1	003719-000	OVEN LIGHT SWITCH, BLACK	1	EA	
2	PJ030033	SELECTOR (10 POS)	1	EA	
3	PE050023	OVEN IND. LIGHT (LENS & BEZEL)	2	EA	
Not Shown	NOTE	(BEFORE 7/13/11)		EA	
4	PE050072	LENS OPENING	2	EA	
Not Shown	NOTE	(BEFORE 7/13/11)		EA	
4	015043-000	INDICATOR, LIGHT, BLUE LED	2	EA	
Not Shown	NOTE	(ON OR AFTER 7/13/11)		EA	
5	PJ030035	THERMOSTAT	1	EA	
6	031108-2072	CONTROL PANEL ASSY, VDSC536-6B	1	EA	
7	PD040004	GROMMET BUMPER	2	EA	
8	PB010304	KNOB BEZEL	8	EA	
9	011637-000	TRIM, ASM	1	EA	
10	PD020032	SRW-8(A)X3/8"PH.WFR HD 7/16DIA*NICL	3	EA	
11	PD020062	#8-32 X 3/8 PHMS TYPE G	4	EA	
12	005270-000	RANGE THERMOSTAT KNOB-BRUSHED, SSS	1	EA	
Not Shown	NOTE	BEFORE 12/20/12		EA	
12	035893-000	KNOB,OVN,TSTAT, PRO VDSC/VESC CR3	1	EA	
Not Shown	NOTE	AFTER 12/20/12		EA	
13	005271-000	RANGE SELECTOR KNOB-BRUSHED, SSS	1	EA	
Not Shown	NOTE	BEFORE 12/20/12		EA	
13	035895-000	KNOB,OVN,SEL, PRO VDSC/VESC CR3	1	EA	
Not Shown	NOTE	AFTER 12/20/12		EA	
15	005269-000	RANGE TOP BURNER KNOB-BRUSHED, SSS	6	EA	
Not Shown	NOTE	BEFORE 12/20/12		EA	



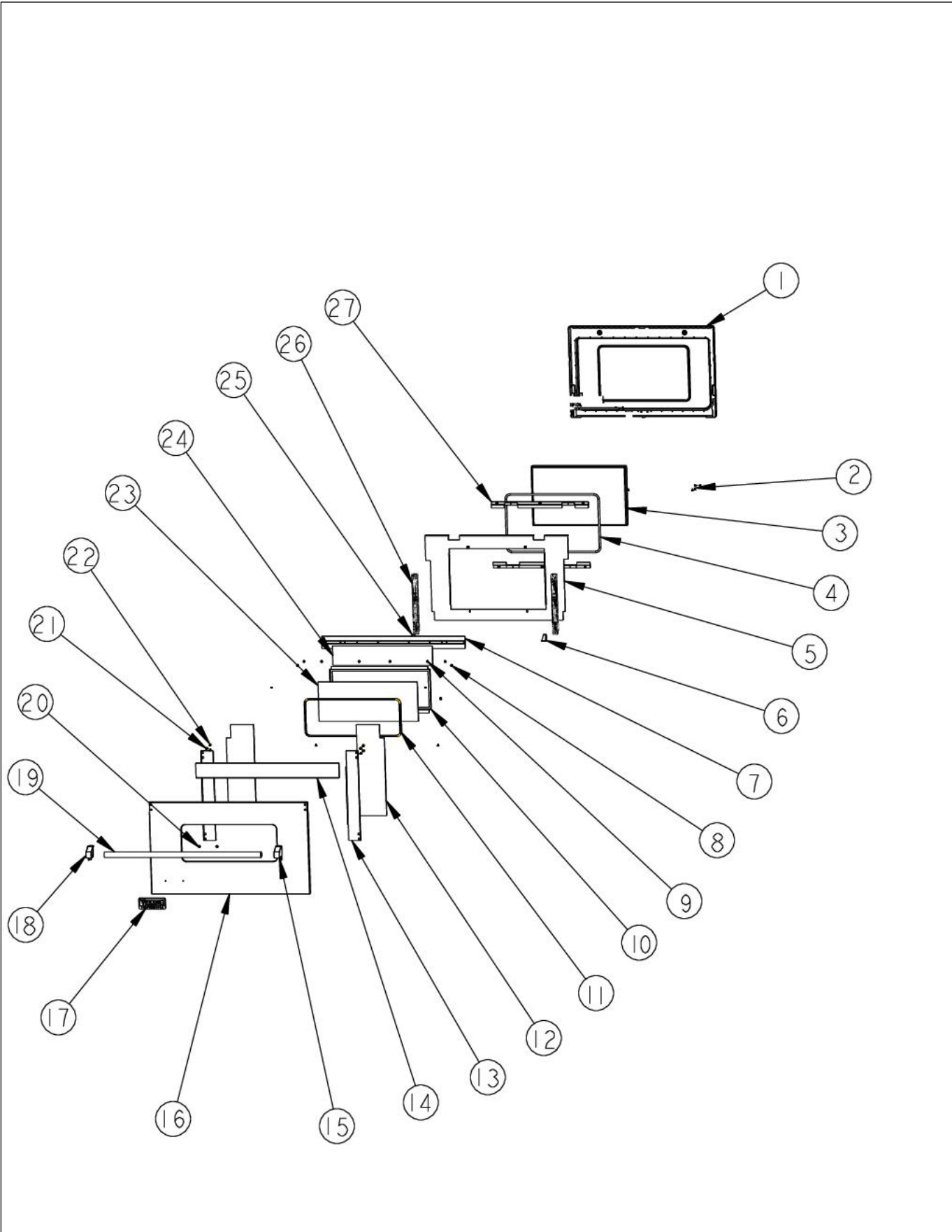


VDSC5:



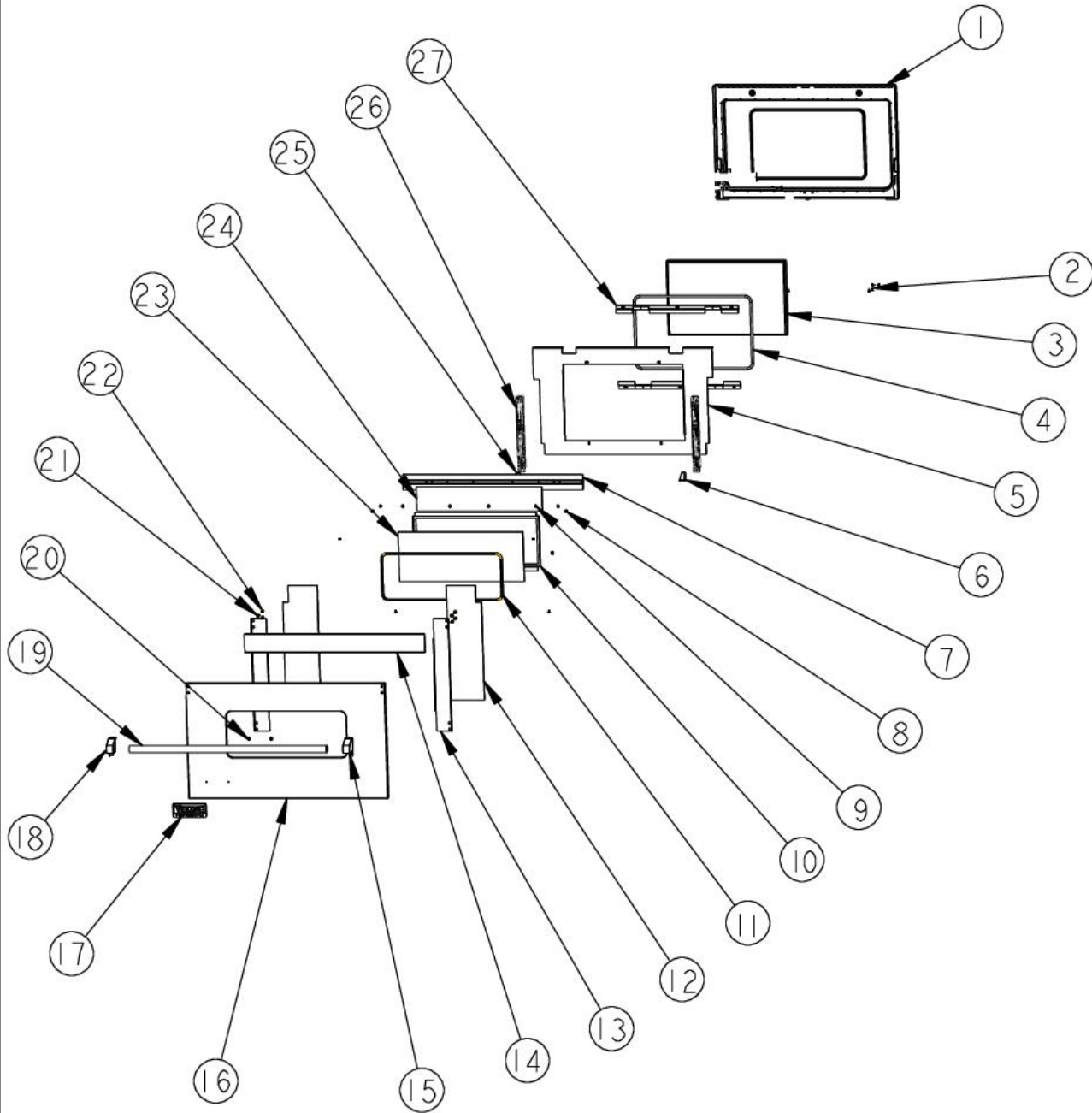
Item	Part No.	Name	Qty	Uom	NOTES
15	035881-000	KNOB, BNR, TOP PRO CR3	6	EA	
Not Shown	NOTE	AFTER 12/20/12		EA	
16	050172-000	BEZEL, KNOB	6	EA	

OR ASSY



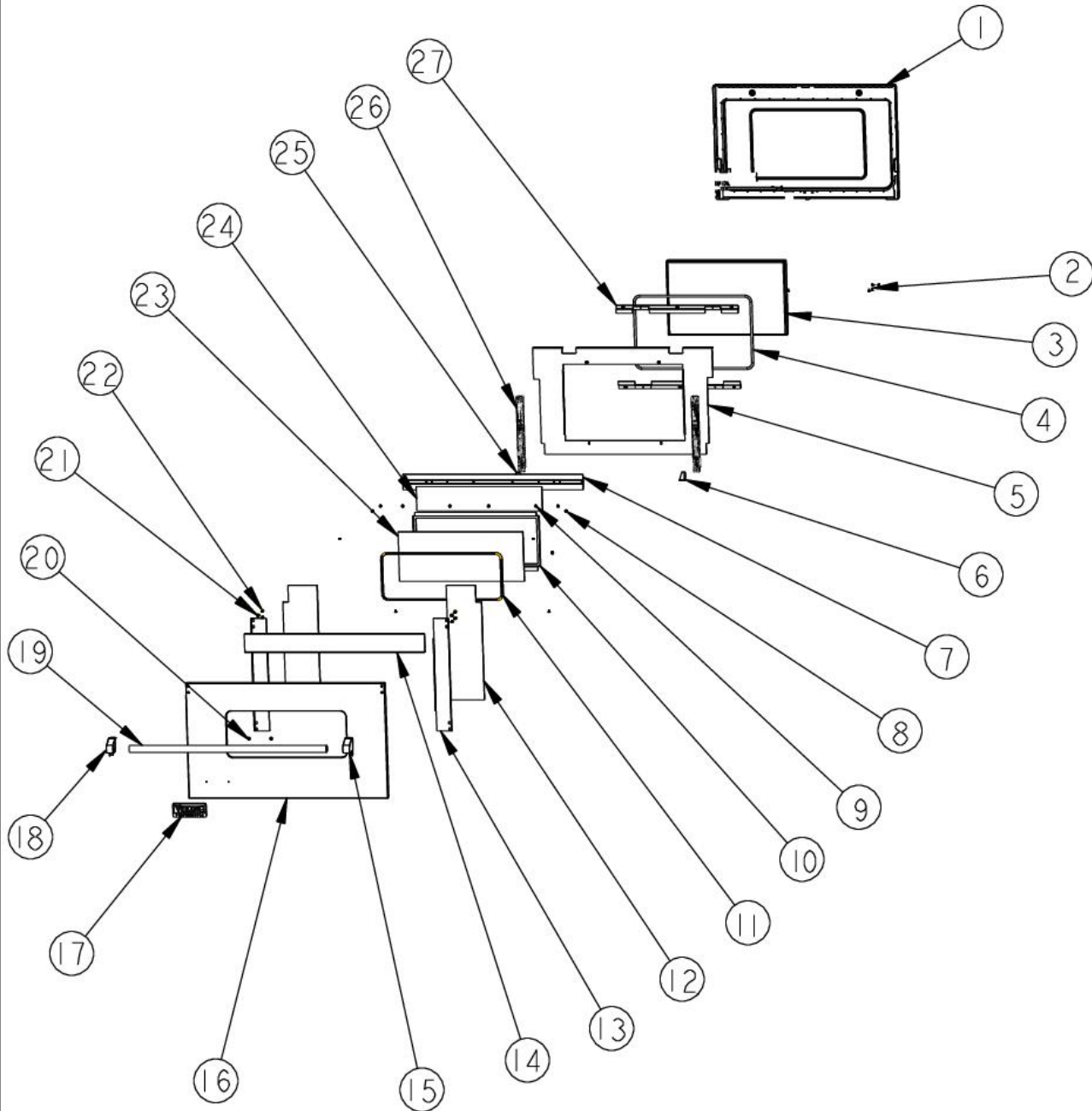


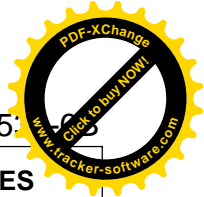
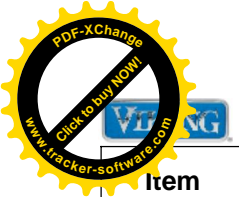
Item	Part No.	Name	Qty	Uom	NOTES
1	002713-402	LINER, DOOR, WLD, ASSY 36" BK	1	EA	
2	PD020032	SRW-8(A)X3/8"PH.WFR HD 7/16DIA*NICL	7	EA	
3	PE060094	30" WINDOW PACK	1	EA	
4	000594-000	BLACK FIBERGLASS ROPE 3/8"	7	EA	
5	006076-000	DOOR LINER INSULATION RETAINER, 36"	1	EA	
6	006807-000	HINGE, BRACKET, RH	1	EA	
7	006089-000	DOOR SKIN MTG BRACKET ASSY, 36"	1	EA	
8	PD020073	SRW NO.10 X 24 X 3/8 WAFER HD TYPE23	2	EA	
9	PD030010	#10-24 KEPS NUT ZINC PLATED	6	EA	
10	NOT FIELD REPLACEABLE	30" WINDOW HOLDER	1	EA	
Not Shown	NOTE	MUST ORDER ITEM # 17		EA	
11	NOT FIELD REPLACEABLE	30" J-MOLD (CHROME)	1	EA	
Not Shown	NOTE	MUST ORDER ITEM # 17		EA	
12	006086-000	DOOR, SKIN, INSULATION, SIDE, 36"	2	EA	
13	002726-000	DOOR SKIN SIDE BRACKET	2	EA	
14	006082-000	DOOR SKIN HEAT SINK, 36"	1	EA	
15	003012-000	DOOR HANDLE ENDCAP ASSY, RH (CHROME)	1	EA	
16	003012-100	DOOR HANDLE ENDCAP ASSY, RH (BRASS)	1	EA	
16	021311-000	DOOR SKIN SERVICE ASSEMBLY, SS	1	EA	
16	021312-002	DOOR SKIN SERVICE ASSEMBLY, BK	1	EA	
16	021312-003	DOOR SKIN SERVICE ASSEMBLY, BT	1	EA	
16	021312-004	DOOR SKIN SERVICE ASSEMBLY, SG	1	EA	
16	021312-005	DOOR SKIN SERVICE ASSEMBLY, GG	1	EA	



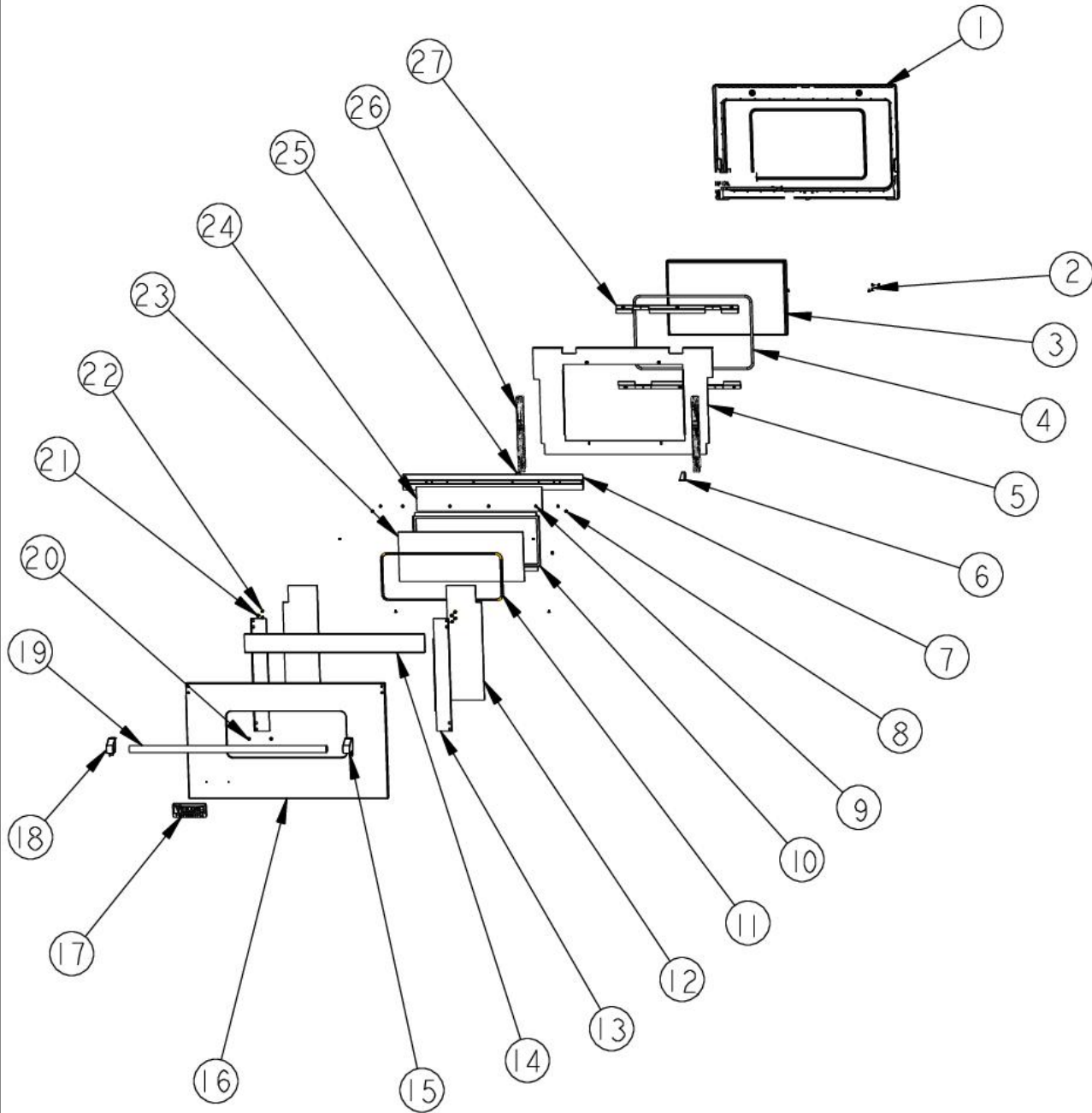


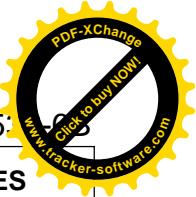
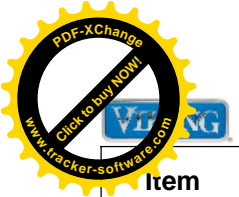
Item	Part No.	Name	Qty	Uom	NOTES
16	021312-006	DOOR SKIN SERVICE ASSEMBLY, WH	1	EA	
16	021312-008	DOOR SKIN SERVICE ASSEMBLY, BU	1	EA	
16	021312-009	DOOR SKIN SERVICE ASSEMBLY, LE	1	EA	
16	021312-010	DOOR SKIN SERVICE ASSEMBLY, MJ	1	EA	
16	021312-012	DOOR SKIN SERVICE ASSEMBLY, VB	1	EA	
16	021312-013	DOOR SKIN SERVICE ASSEMBLY, CB	1	EA	
16	021312-015	DOOR SKIN SERVICE ASSEMBLY, PL	1	EA	
16	021312-016	DOOR SKIN SERVICE ASSEMBLY, CH	1	EA	
16	021312-017	DOOR SKIN SERVICE ASSEMBLY, TP	1	EA	
16	021312-018	DOOR SKIN SERVICE ASSEMBLY, CW	1	EA	
16	021312-019	DOOR SKIN SERVICE ASSEMBLY, OG	1	EA	
16	021312-020	DOOR SKIN SERVICE ASSEMBLY, GM	1	EA	
16	021312-021	DOOR SKIN SERVICE ASSEMBLY, SA	1	EA	
16	021312-022	DOOR SKIN SERVICE ASSEMBLY, SE	1	EA	
16	021312-023	DOOR SKIN SERVICE ASSEMBLY, IB	1	EA	
16	021312-024	DOOR SKIN SERVICE ASSEMBLY, AR	1	EA	
16	021312-025	DOOR SKIN SERVICE ASSEMBLY, RR	1	EA	
16	021312-026	DOOR SKIN SERVICE ASSEMBLY, PM	1	EA	
16	021312-027	DOOR SKIN SERVICE ASSEMBLY, MS	1	EA	
17	PE010030	LOGO, PRO, LARGE	1	EA	
18	003011-000	DOOR HANDLE ENDCAP ASSY, LH (CHROME)	1	EA	
19	003011-100	DOOR HANDLE ENDCAP ASSY, LH (BRASS)	1	EA	



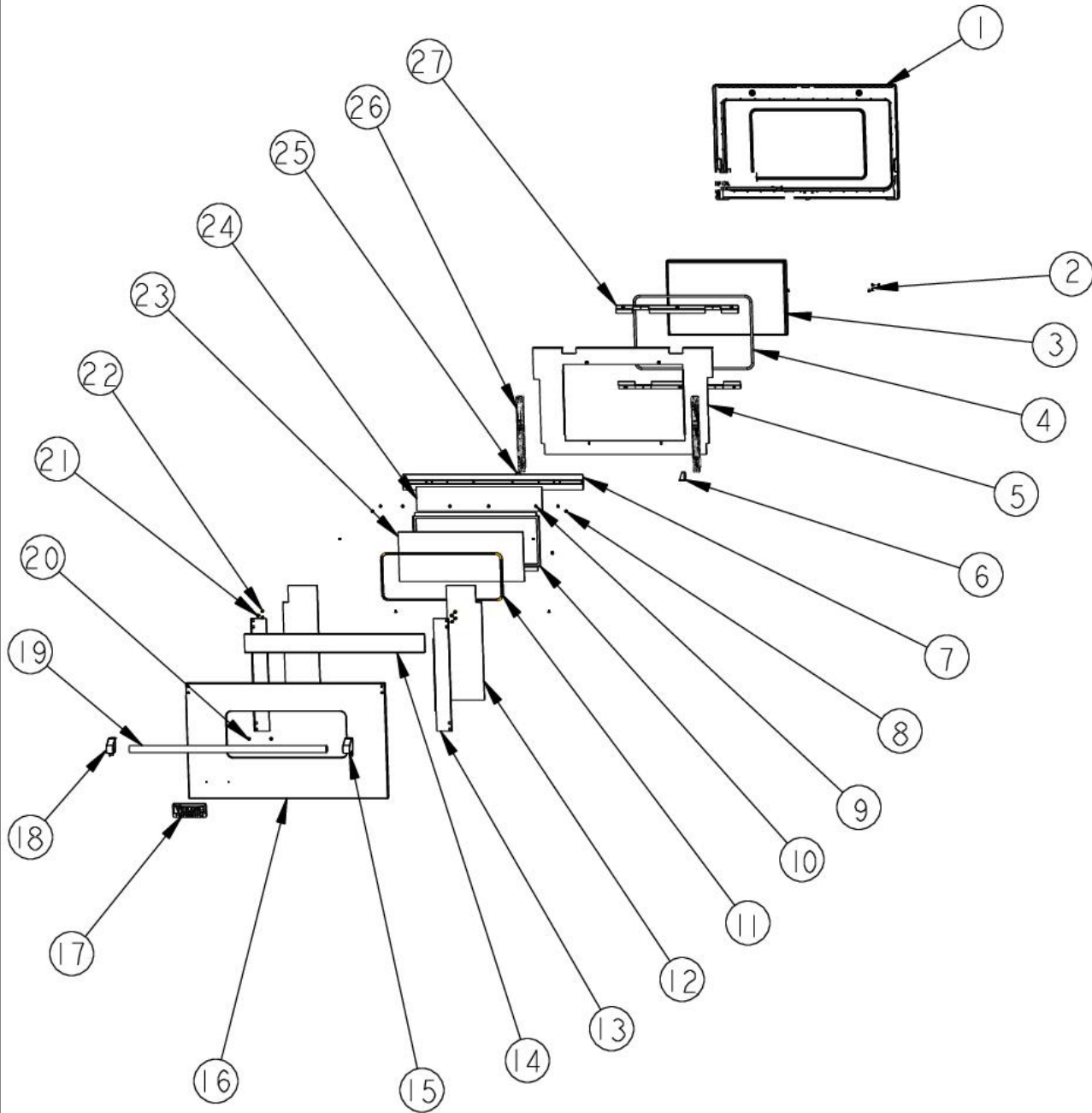


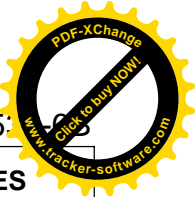
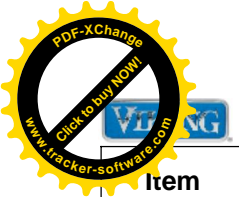
Item	Part No.	Name	Qty	Uom	NOTES
19	006080-000	36" DOOR HANDLE, 35.5	1	EA	
20	PD030006	CAPPED WASHER PAL NUT	2	EA	
21	002736-000	NO.10-32 PAN HEAD PHILLIPS MACHINE SCREW	4	EA	
22	004907-000	STEEL FINISHING PLUG, NICKEL PLTD 25/64 HOLE	4	EA	
23	NOT FIELD REPLACEABLE	30" PROF. OUTER DOOR GLASS	1	EA	
Not Shown	NOTE	MUST ORDER ITEM # 17		EA	
24	006788-000	INSULATION,DOOR,TOP,SUPE RWOOL,.25,VDSC530	1	EA	
25	006808-000	HINGE, BRACKET, LH	1	EA	
26	006999-000	HINGE, DOOR, VDSC36" - ORANGE SPRING	2	EA	
27	004153-000	DOOR GLASS HOLDER BRACKET	2	EA	
NI	009852-002	DOOR SKIN ASM - BK, 36" NOT FIELD REPLACEABLE	1	EA	
NI	009852-102	DOOR SKIN ASM - BK/BR, 36"	1	EA	
NI	009852-003	DOOR SKIN ASM - BT, 36"	1	EA	
NI	009852-103	DOOR SKIN ASM - BT/BR, 36"	1	EA	
NI	009852-004	DOOR SKIN ASM - SG, 36"	1	EA	
NI	009852-104	DOOR SKIN ASM - SG/BR, 36"	1	EA	
NI	009852-005	DOOR SKIN ASM - CG, 36"	1	EA	
NI	009852-105	DOOR SKIN ASM - CG/BR, 36"	1	EA	
NI	009852-006	DOOR SKIN ASM - WH, 36"	1	EA	
NI	009852-106	DOOR SKIN ASM - WH/BR, 36"	1	EA	
NI	009852-007	DOOR SKIN ASM - AL, 36"	1	EA	
NI	009852-107	DOOR SKIN ASM - AL/BR, 36"	1	EA	
NI	009852-008	DOOR SKIN ASM - BU, 36"	1	EA	
NI	009852-108	DOOR SKIN ASM - BU/BR, 36"	1	EA	
NI	009852-009	DOOR SKIN ASM - LE, 36"	1	EA	
NI	009852-109	DOOR SKIN ASM - LE/BR, 36"	1	EA	
NI	009852-010	DOOR SKIN ASM - MJ, 36"	1	EA	
NI	009852-110	DOOR SKIN ASM - MJ/BR, 36"	1	EA	
NI	009852-011	DOOR SKIN ASM - FG, 36"	1	EA	



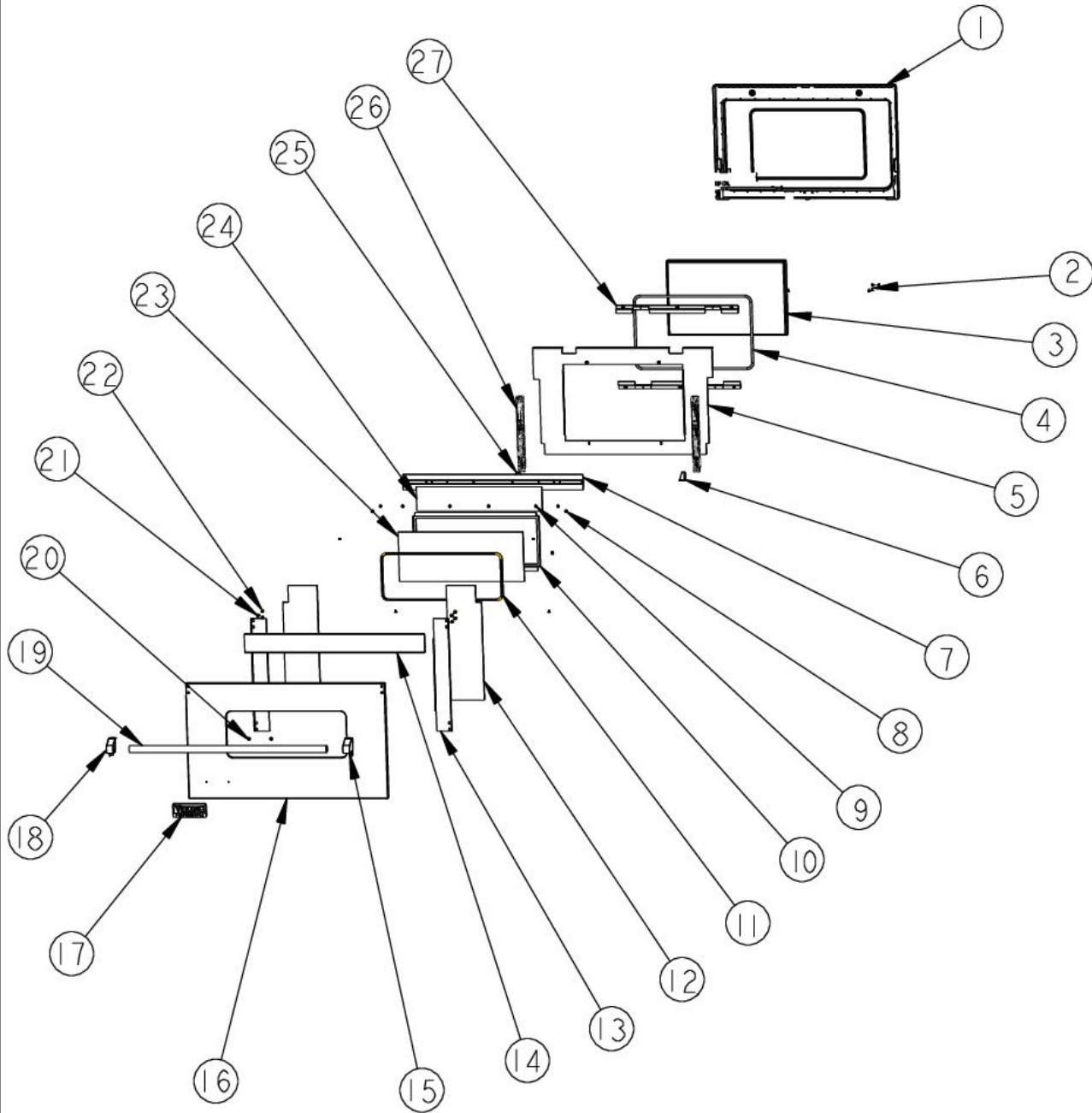


Item	Part No.	Name	Qty	Uom	NOTES
NI	009852-111	DOOR SKIN ASM - FG/BR, 36"	1	EA	
NI	009852-012	DOOR SKIN ASM - VB, 36"	1	EA	
NI	009852-112	DOOR SKIN ASM - VB/BR, 36"	1	EA	
NI	009852-013	DOOR SKIN ASM - CB, 36"	1	EA	
NI	009852-113	DOOR SKIN ASM - CB/BR, 36"	1	EA	
NI	009852-014	DOOR SKIN ASM - EP, 36"	1	EA	
NI	009852-114	DOOR SKIN ASM - EP/BR, 36"	1	EA	
NI	009852-015	DOOR SKIN ASM - PL, 36"	1	EA	
NI	009852-115	DOOR SKIN ASM - PL/BR, 36"	1	EA	
NI	009852-016	DOOR SKIN ASM - CH, 36"	1	EA	
NI	009852-116	DOOR SKIN ASM - CH/BR, 36"	1	EA	
NI	009852-017	DOOR SKIN ASM - TP, 36"	1	EA	
NI	009852-117	DOOR SKIN ASM - TP/BR, 36"	1	EA	
NI	009852-018	DOOR SKIN ASM - CW, 36"	1	EA	
NI	009852-118	DOOR SKIN ASM - CW/BR, 36"	1	EA	
NI	009852-019	DOOR SKIN ASM - OG, 36"	1	EA	
NI	009852-119	DOOR SKIN ASM - OG/BR, 36"	1	EA	
NI	009852-020	DOOR SKIN ASM - GM, 36"	1	EA	
NI	009852-120	DOOR SKIN ASM - GM/BR, 36"	1	EA	
NI	009852-021	DOOR SKIN ASM - SA, 36"	1	EA	
NI	009852-121	DOOR SKIN ASM - SA/BR, 36"	1	EA	
NI	009852-022	DOOR SKIN ASM - SE, 36"	1	EA	
NI	009852-122	DOOR SKIN ASM - SE/BR, 36"	1	EA	
NI	009852-023	DOOR SKIN ASM - IB, 36"	1	EA	
NI	009852-123	DOOR SKIN ASM - IB/BR, 36"	1	EA	
NI	009852-024	DOOR SKIN ASM - AR, 36"	1	EA	
NI	009852-124	DOOR SKIN ASM - AR/BR, 36"	1	EA	
NI	009852-025	DOOR SKIN ASM - RR, 36"	1	EA	
NI	009852-125	DOOR SKIN ASM - RR/BR, 36"	1	EA	
NI	009852-026	DOOR SKIN ASM - PM, 36"	1	EA	
NI	009852-126	DOOR SKIN ASM - PM/BR, 36"	1	EA	
NI	009852-027	DOOR SKIN ASM - MS, 36"	1	EA	
NI	009852-127	DOOR SKIN ASM - MS/BR, 36"	1	EA	





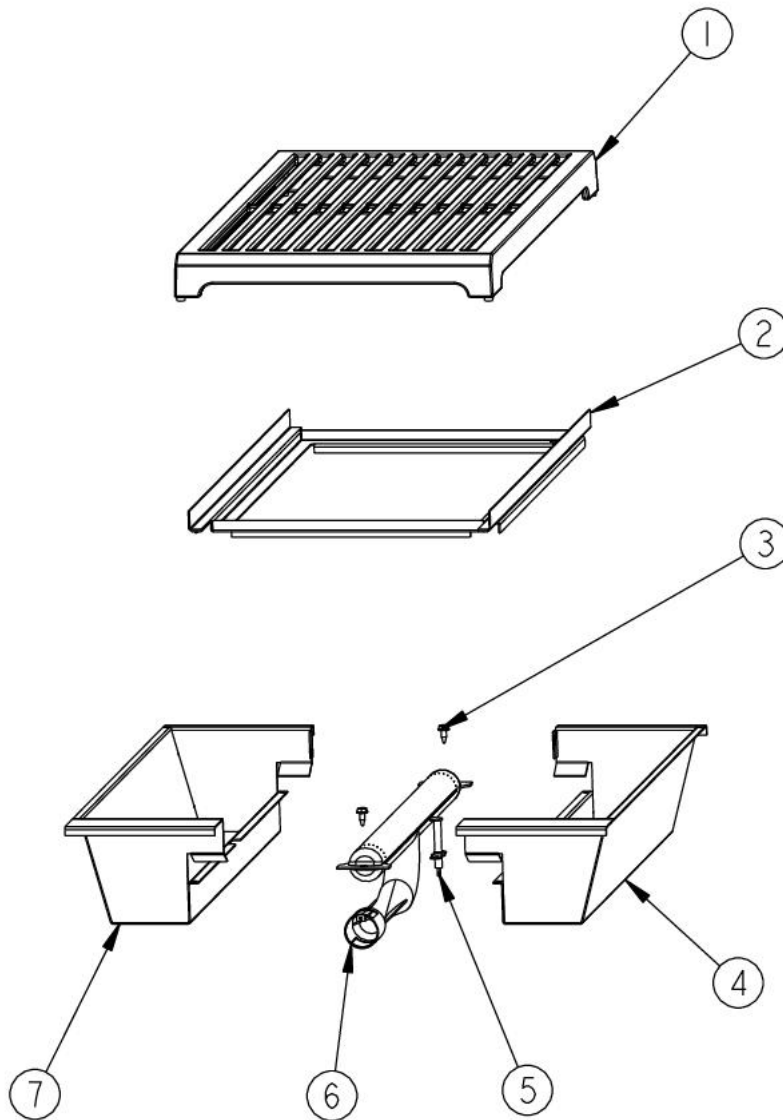
Item	Part No.	Name	Qty	Uom	NOTES
NI	009915-002	DOOR ASSEMBLY, 36" - BK	1	EA	
NI	009915-102	DOOR ASSEMBLY, 36" - BK/BR	1	EA	
NI	009915-003	DOOR ASSEMBLY, 36" - BT	1	EA	
NI	009915-103	DOOR ASSEMBLY, 36" - BT/BR	1	EA	
NI	009915-004	DOOR ASSEMBLY, 36" - SG	1	EA	
NI	009915-104	DOOR ASSEMBLY, 36" - SG/BR	1	EA	
NI	009915-005	DOOR ASSEMBLY, 36" - GG	1	EA	
NI	009915-105	DOOR ASSEMBLY, 36" - GG/BR	1	EA	
NI	009915-006	DOOR ASSEMBLY, 36" - WH	1	EA	
NI	009915-106	DOOR ASSEMBLY, 36" - WH/BR	1	EA	
NI	009915-007	DOOR ASM - AL, 36"	1	EA	
NI	009915-107	DOOR ASM - AL/BR, 36"	1	EA	
NI	009915-008	DOOR ASSEMBLY, 36" - BU	1	EA	
NI	009915-108	DOOR ASSEMBLY, 36" - BU/BR	1	EA	
NI	009915-009	DOOR ASSEMBLY, 36" - LE	1	EA	
NI	009915-109	DOOR ASSEMBLY, 36" - LE/BR	1	EA	
NI	009915-010	DOOR ASSEMBLY, 36" - MJ	1	EA	
NI	009915-110	DOOR ASSEMBLY, 36" - MJ/BR	1	EA	
NI	009915-011	DOOR ASM - FG/BR, 36"	1	EA	
NI	009915-111	DOOR ASM - FG/BR, 36"	1	EA	
NI	009915-012	DOOR ASSEMBLY, 36" - VB	1	EA	
NI	009915-112	DOOR ASSEMBLY, 36" - VB/BR	1	EA	
NI	009915-013	DOOR ASSEMBLY, 36" - CB	1	EA	
NI	009915-113	DOOR ASSEMBLY, 36" - CB/BR	1	EA	
NI	009915-014	DOOR ASM - EP, 36"	1	EA	
NI	009915-114	DOOR ASM - EP/BR, 36"	1	EA	
NI	009915-015	DOOR ASSEMBLY, 36" - PL	1	EA	
NI	009915-115	DOOR ASSEMBLY, 36" - PL/BR	1	EA	
NI	009915-016	DOOR ASSEMBLY, 36" - CH	1	EA	
NI	009915-116	DOOR ASSEMBLY, 36" - CH/BR	1	EA	
NI	009915-017	DOOR ASSEMBLY, 36" - TP	1	EA	
NI	009915-117	DOOR ASSEMBLY, 36" - TP/BR	1	EA	
NI	009915-018	DOOR ASSEMBLY, 36" - CW	1	EA	





Item	Part No.	Name	Qty	Uom	NOTES
NI	009915-118	DOOR ASSEMBLY, 36" - CW/BR	1	EA	
NI	009915-019	DOOR ASSEMBLY, 36" - OG	1	EA	
NI	009915-119	DOOR ASSEMBLY, 36" - OG/BR	1	EA	
NI	009915-020	DOOR ASSEMBLY, 36" - GM	1	EA	
NI	009915-120	DOOR ASSEMBLY, 36" - GM/BR	1	EA	
NI	009915-021	DOOR ASSEMBLY, 36" - SA	1	EA	
NI	009915-121	DOOR ASSEMBLY, 36" - SA/BR	1	EA	
NI	009915-022	DOOR ASSEMBLY, 36" - SE	1	EA	
NI	009915-122	DOOR ASSEMBLY, 36" - SE/BR	1	EA	
NI	009915-023	DOOR ASSEMBLY, 36" - IB	1	EA	
NI	009915-123	DOOR ASSEMBLY, 36" - IB/BR	1	EA	
NI	009915-024	DOOR ASSEMBLY, 36" - AR	1	EA	
NI	009915-124	DOOR ASSEMBLY, 36" - AR/BR	1	EA	
NI	009915-025	DOOR ASSEMBLY, 36" - RR	1	EA	
NI	009915-125	DOOR ASSEMBLY, 36" - RR/BR	1	EA	
NI	009915-026	DOOR ASSEMBLY, 36" - PM	1	EA	
NI	009915-126	DOOR ASSEMBLY, 36" - PM/BR	1	EA	
NI	009915-027	DOOR ASSEMBLY, 36" - MS	1	EA	
NI	009915-127	DOOR ASSEMBLY, 36" - MS/BR	1	EA	
NI	006996-000	DOOR GASKET, 36"	1	EA	

# MILL ASSY



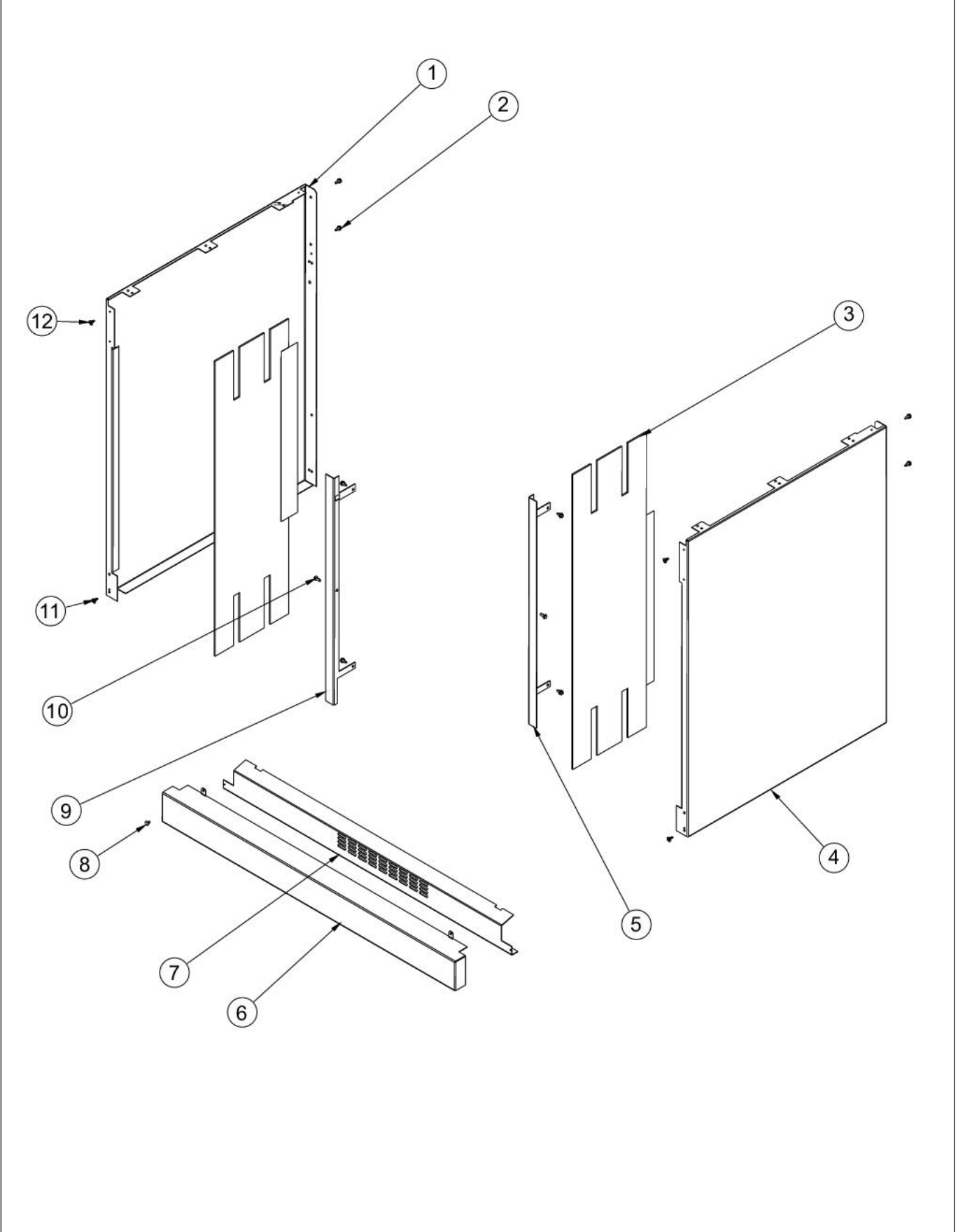


VDSC5



Item	Part No.	Name	Qty	Uom	NOTES
1	010168-000	CUSTOM RANGE GRILL GRATE	1	EA	
2	E9101130BK	GRILL SMOKE GENERATOR	1	EA	
3	003860-000	10-18 x .500 FASTNR,SCR,HXWH,STL,ZPLT	2	EA	
4	007782-000	DRIP TRAY, WELDED ASM, RH	1	EA	
5	PA020028	SPARK IGNITER	1	EA	
6	007878-000	BURNER, GRIL, ASM	1	EA	
7	008152-000	DRIP TRAY, WELDED ASM, LH	1	EA	

# POWER UNIT AND SIDE PANELS



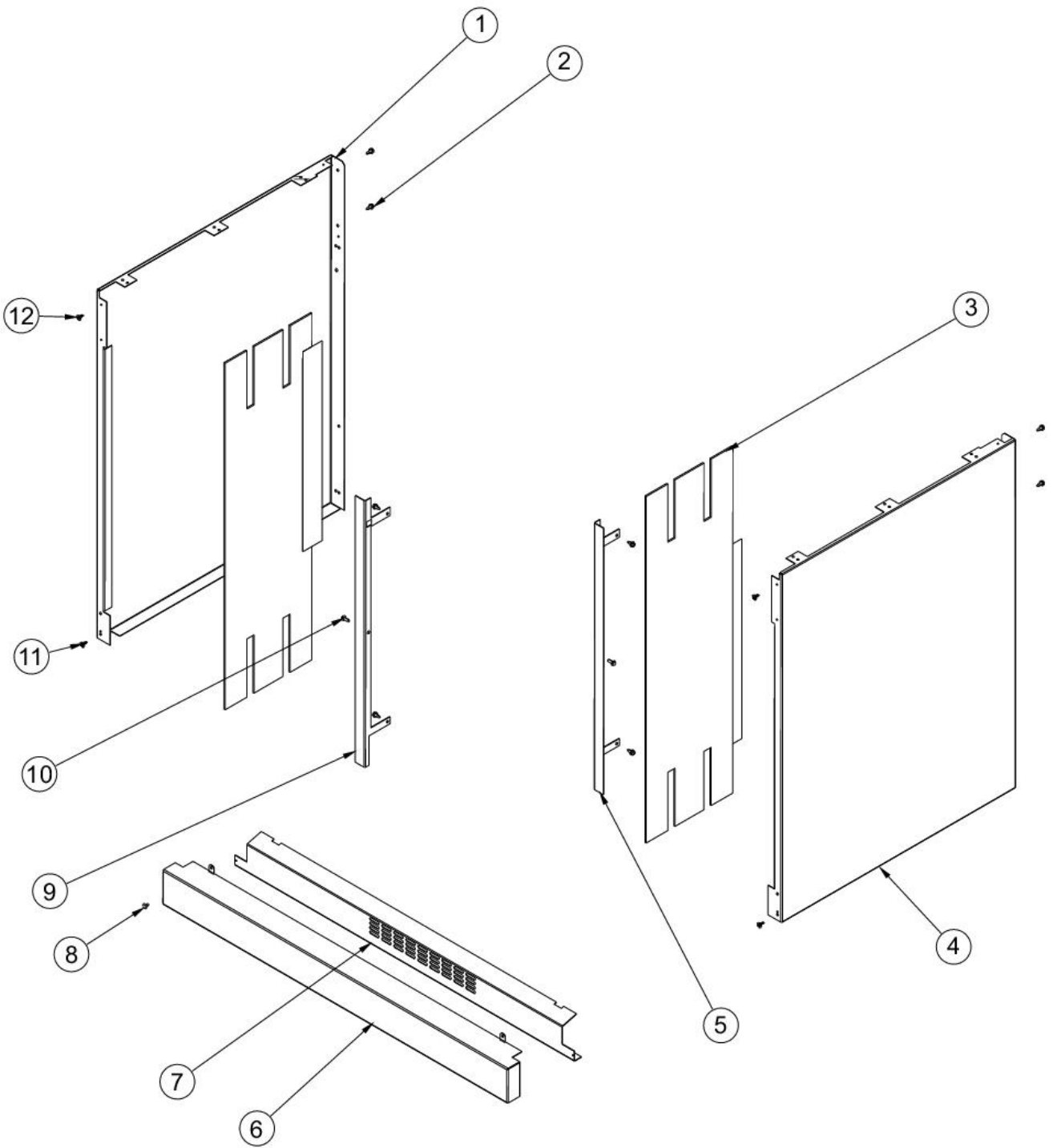


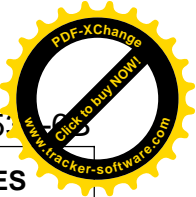
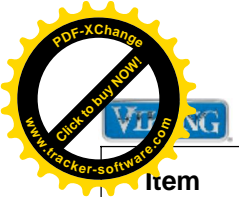
Item	Part No.	Name	Qty	Uom	NOTES
1	003803-000	SIDE PANEL ASSY, LH	1	EA	
1	005506-002	SIDE PANEL, LH ASSY, PAINTED *BK*	1	EA	
1	005506-003	SIDE PANEL, LH ASSY, PAINTED *BT*	1	EA	
1	005506-004	SIDE PANEL, LH ASSY, PAINTED *SG*	1	EA	
1	005506-005	SIDE PANEL, LH ASSY, PAINTED *GG*	1	EA	
1	005506-006	SIDE PANEL, LH ASSY, PAINTED *WH*	1	EA	
1	005506-008	SIDE PANEL, LH ASSY, PAINTED *BU*	1	EA	
1	005506-009	SIDE PANEL, LH ASSY, PAINTED *LE*	1	EA	
1	005506-010	SIDE PANEL, LH ASSY, PAINTED *MJ*	1	EA	
1	005506-012	SIDE PANEL, LH ASSY, PAINTED *VB*	1	EA	NO LONGER AVAILABLE
1	005506-013	SIDE PANEL, LH ASSY, PAINTED *CB*	1	EA	
1	005506-015	SIDE PANEL, LH ASSY, PAINTED *PL*	1	EA	
1	005506-016	SIDE PANEL, LH ASSY, PAINTED *CH*	1	EA	
1	005506-017	SIDE PANEL, LH ASSY, PAINTED *TP*	1	EA	
1	005506-018	SIDE PANEL, LH ASSY, PAINTED *CW*	1	EA	
1	005506-019	SIDE PANEL, LH ASSY, PAINTED *OG*	1	EA	
1	005506-020	SIDE PANEL, LH ASSY, PAINTED *GM*	1	EA	
1	005506-021	SIDE PANEL, LH ASSY, PAINTED *SA*	1	EA	
1	005506-022	SIDE PANEL, LH ASSY, PAINTED *SE*	1	EA	
1	005506-023	SIDE PANEL, LH ASSY, PAINTED *IB*	1	EA	
1	005506-024	SIDE PANEL, LH ASSY, PAINTED *AR*	1	EA	
1	005506-025	SIDE PANEL, LH ASSY, PAINTED *RR*	1	EA	



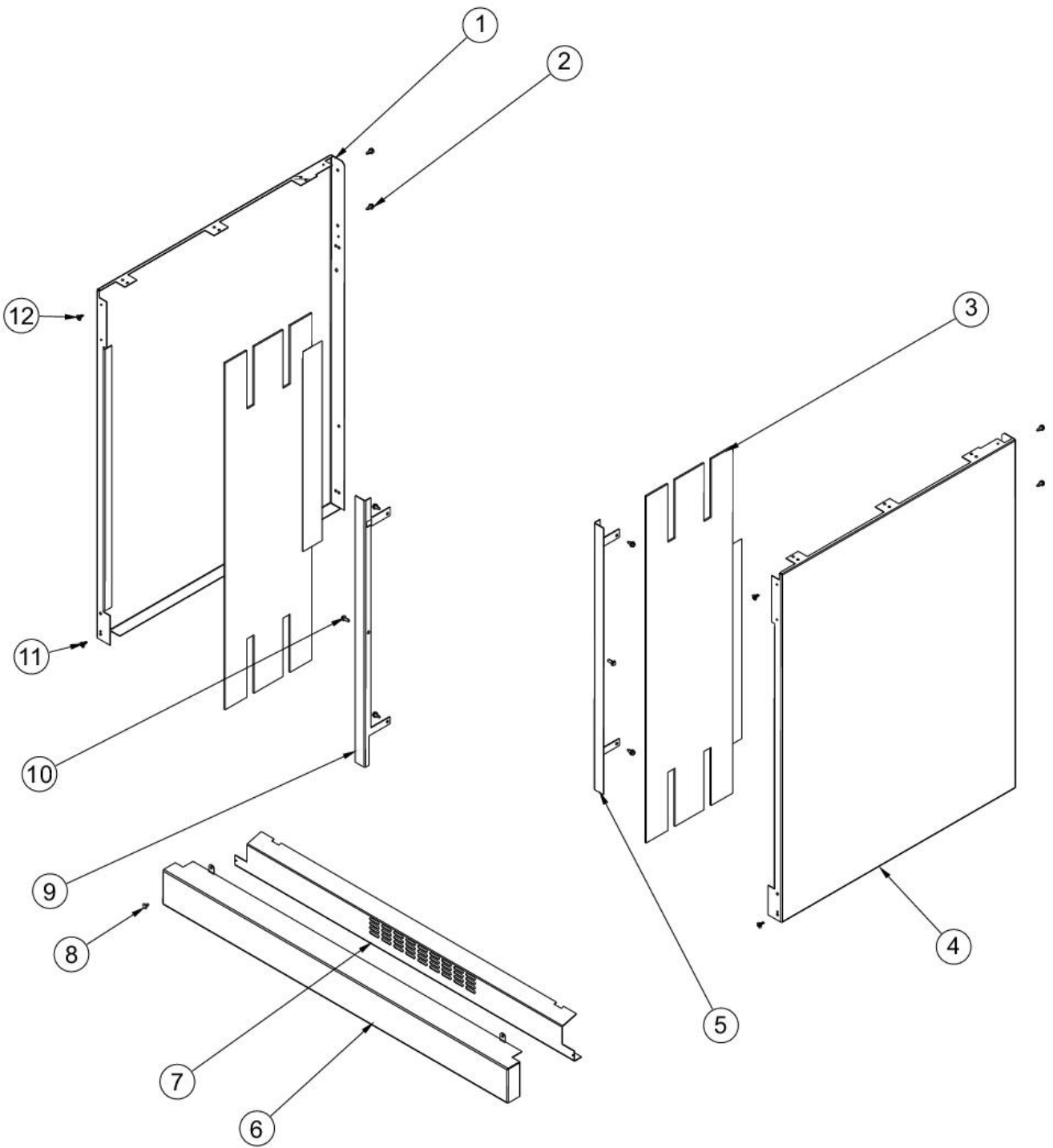


Item	Part No.	Name	Qty	Uom	NOTES
1	005506-026	SIDE PANEL, LH ASSY, PAINTED *PM*	1	EA	
1	005506-027	SIDE PANEL, LH ASSY, PAINTED *MS*	1	EA	
2	003860-000	10-18 x .500 FASTNR,SCR,HXWH,STL,ZPLT	8	EA	
3	007488-000	SINK, REAR, SIDE	2	EA	
4	003802-000	SIDE PANEL ASSY, RH, SST	1	EA	
4	005503-002	SIDE PANEL, RH ASSY, PAINTED *BK*	1	EA	
4	005503-003	SIDE PANEL, RH ASSY, PAINTED *BT*	1	EA	
4	005503-004	SIDE PANEL, RH ASSY, PAINTED *SG*	1	EA	
4	005503-005	SIDE PANEL, RH ASSY, PAINTED *GG*	1	EA	
4	005503-006	SIDE PANEL, RH ASSY, PAINTED *WH*	1	EA	
4	005503-008	SIDE PANEL, RH ASSY, PAINTED *BU*	1	EA	
4	005503-009	SIDE PANEL, RH ASSY, PAINTED *LE*	1	EA	
4	005503-010	SIDE PANEL, RH ASSY, PAINTED *MJ*	1	EA	
4	005503-012	SIDE PANEL, RH ASSY, PAINTED *VB*	1	EA	
4	005503-013	SIDE PANEL, RH ASSY, PAINTED *CB*	1	EA	
4	005503-015	SIDE PANEL, RH ASSY, PAINTED *PL*	1	EA	NO LONGER AVAILABLE
4	005503-016	SIDE PANEL, RH ASSY, PAINTED *CH*	1	EA	
4	005503-017	SIDE PANEL, RH ASSY, PAINTED *TP*	1	EA	
4	005503-018	SIDE PANEL, RH ASSY, PAINTED *CW*	1	EA	
4	005503-019	SIDE PANEL, RH ASSY, PAINTED *OG*	1	EA	
4	005503-020	SIDE PANEL, RH ASSY, PAINTED *GM*	1	EA	
4	005503-021	SIDE PANEL, RH ASSY, PAINTED *SA*	1	EA	





Item	Part No.	Name	Qty	Uom	NOTES
4	005503-022	SIDE PANEL, RH ASSY, PAINTED *SE*	1	EA	
4	005503-023	SIDE PANEL, RH ASSY, PAINTED *IB*	1	EA	
4	005503-024	SIDE PANEL, RH ASSY, PAINTED *AR*	1	EA	
4	005503-025	SIDE PANEL, RH ASSY, PAINTED *RR*	1	EA	
4	005503-026	SIDE PANEL, RH ASSY, PAINTED *PM*	1	EA	
4	005503-027	SIDE PANEL, RH ASSY, PAINTED *MS*	1	EA	
5	004606-000	OVEN, TRIM, FR, SIDE, RH, 36"	1	EA	
6	005382-000	KICKPLATE, SS, VDSC36"	1	EA	
6	010989-002	KICKPLATE, BK	1	EA	
6	010989-003	KICKPLATE, BT 36"	1	EA	
6	010989-004	KICKPLATE, SG 36"	1	EA	
6	010989-005	KICKPLATE, 36" GG	1	EA	
6	010989-006	KICKPLATE, 36" WH	1	EA	
6	010989-008	KICKPLATE, BU 36"	1	EA	
6	010989-009	KICKPLATE, LE 36"	1	EA	
6	010989-010	KICKPLATE, MJ 36"	1	EA	
6	010989-012	KICKPLATE, VB 36"	1	EA	
6	010989-013	KICKPLATE - CB	1	EA	
6	010989-015	KICKPLATE, PL 36"	1	EA	
6	010989-016	KICKPLATE, CH 36"	1	EA	
6	010989-017	KICKPLATE, TP 36"	1	EA	
6	010989-018	KICKPLATE, CW 36"	1	EA	
6	010989-019	KICKPLATE, OG 36"	1	EA	
6	010989-020	KICKPLATE, GM 36"	1	EA	
6	010989-021	KICKPLATE, SA 36"	1	EA	
6	010989-022	KICKPLATE, SE 36"	1	EA	
6	010989-023	KICKPLATE, IB 36"	1	EA	
6	010989-024	KICKPLATE, AR 36"	1	EA	
6	010989-025	KICKPLATE, RR 36"	1	EA	
6	010989-026	KICKPLATE, PM 36"	1	EA	



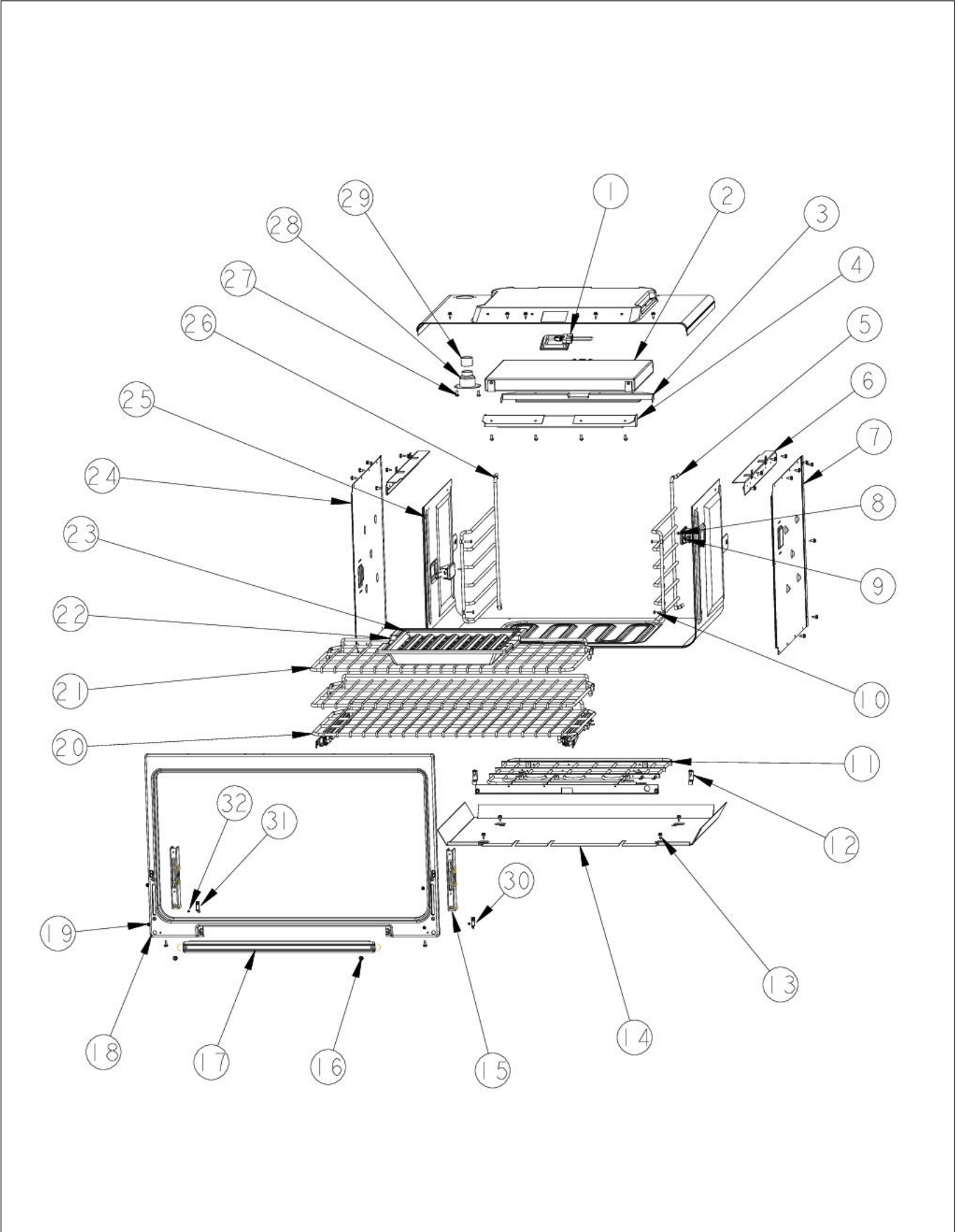


VDSC5:



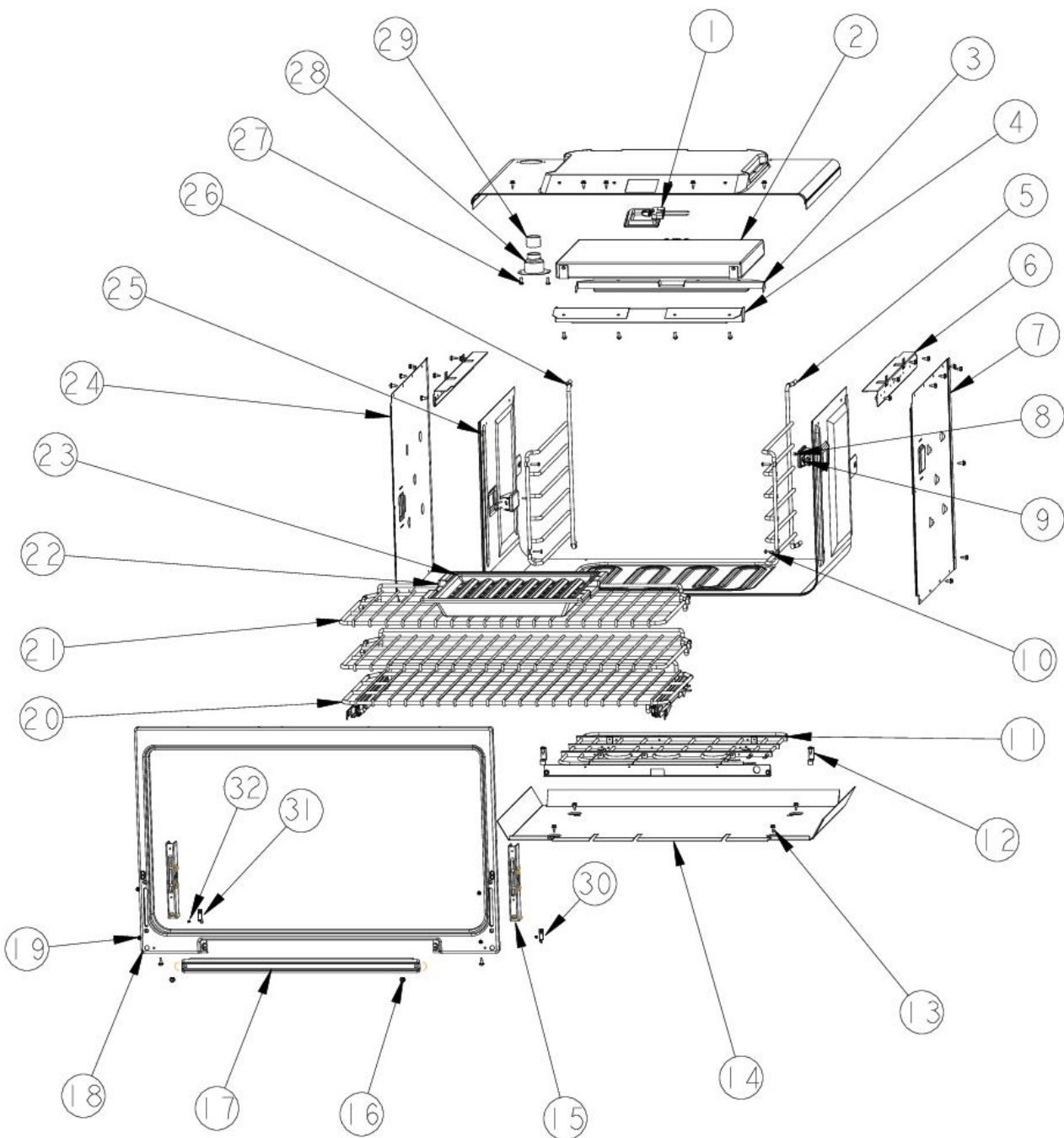
Item	Part No.	Name	Qty	Uom	NOTES
6	010989-027	KICKPLATE, MS 36"	1	EA	
7	005381-000	ACCESS GRILL PANEL, LOWER 36"	1	EA	
8	PD020032	SRW-8(A)X3/8"PH.WFR HD 7/16DIA*NICL	2	EA	
9	004607-000	OVEN, TRIM, FR, SIDE, LH, 36"	1	EA	
10	PD020048	Screw, 10 X 1/2 Hex Washer Hd Tek	2	EA	
11	003801-000	SHOULDER SCREW, #10	2	EA	

# EN MODULE





Item	Part No.	Name	Qty	Uom	NOTES
1	005312-000	120v/40W HALOGEN LIGHT	1	EA	
2	PJ010050	Broil Element	4	EA	
3	B20014051	Rear Broil Element	1	EA	
4	B20014050	Front Broil Element	1	EA	
5	003039-000	RACK GUIDE ASSY, RH	1	EA	
6	A2009641	BRKT, TOP WRAPPER	2	EA	
7	A2009622	BRKT, TOP WRAPPER, RIGHT	1	EA	
8	PD020067	NO.6 X 3/8 PAN PHIL. TEK SS	1	EA	
9	005311-000	120v/25W HALOGEN LIGHT	1	EA	
10	PD020232	#8 X 3/4" PH PAN HEAD TEK SCREW (BLACK OXIDE)	1	EA	
11	PJ010048	BAKE ELEMENT	1	EA	
12	A2009696	HOLDER, BAKE ELEMENT	1	EA	
13	003860-000	10-18 x .500 FASTNR,SCR,HXWH,STL,ZPLT	37	EA	
14	004541-000	ELEMENT, MTG TRAY 36"	1	EA	
15	031679-000	RECEPTACLE, HINGE	1	EA	
16	PD020063	SCREW-NO.8(A) X 3/8PH WFR HD/BK OXID	1	EA	
17	E9109655	COVER, BAKE TRAY	1	EA	
18	NON REPLACEBLE	OVEN CAVITY, ASM 36" (002769-000)	1	EA	
19	PD020062	#8-32 X 3/8 PHMS TYPE G	1	EA	
20	007000-000	36" TRU-GLIDE RACK	1	EA	
21	005953-000	OVEN, RACK, ASM, STANDARD	2	EA	
22	E9107933	BROILER PAN	1	EA	
23	E9107934	BROILER PAN INSERT	1	EA	
24	A20012650	BRKT, TOP WRAPPER LEFT	1	EA	
25	E91014053	PORCELAIN 25/64" HOLE PLUG	1	EA	
26	003040-000	RACK GUIDE ASSY, LH	1	EA	
27	PD020048	Screw, 10 X 1/2 Hex Washer Hd Tek	1	EA	
28	PM010014	Smoke Eliminator	1	EA	
29	PB020275	Vent Tube	1	EA	
30	B21010915	HINGE CLIP - RH	1	EA	



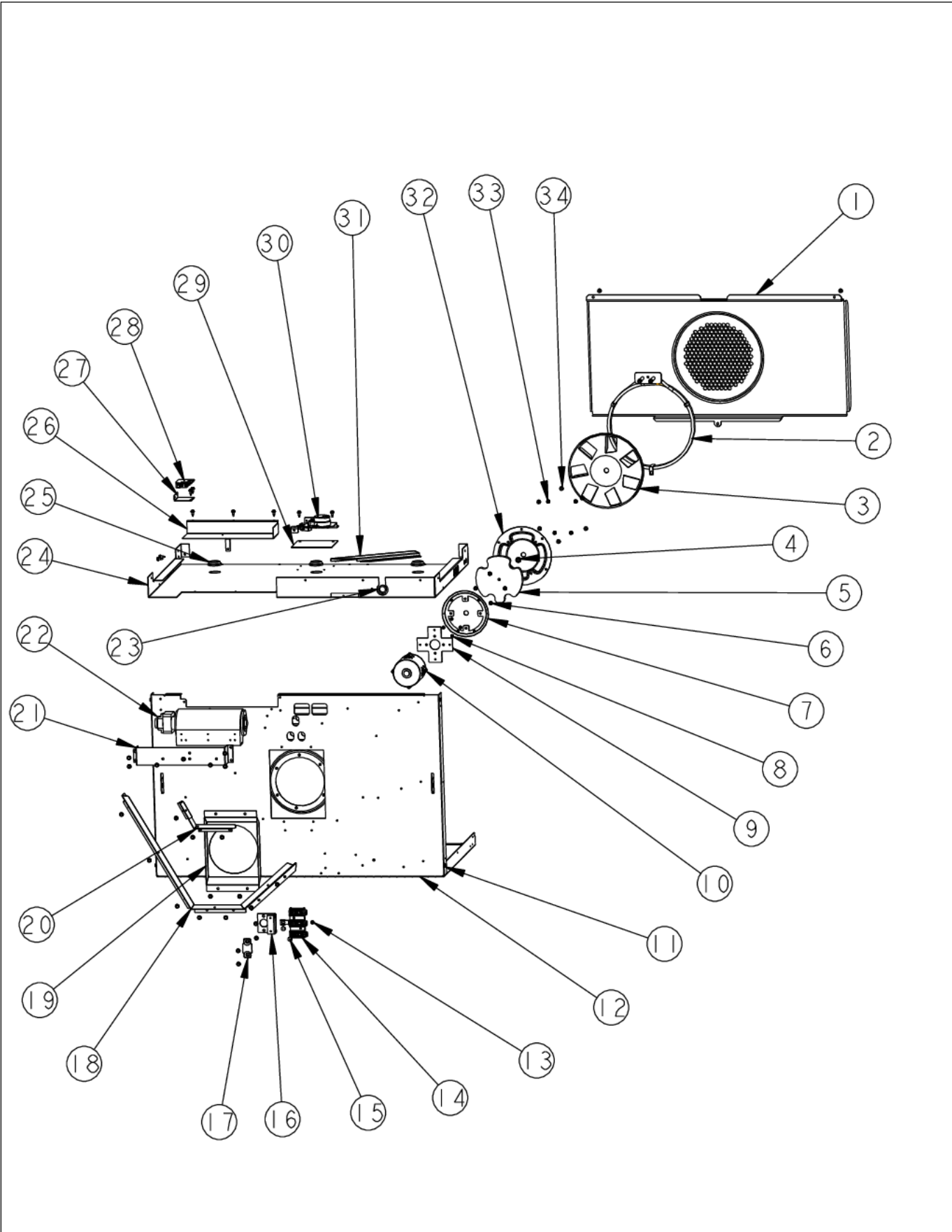


VDSC5:



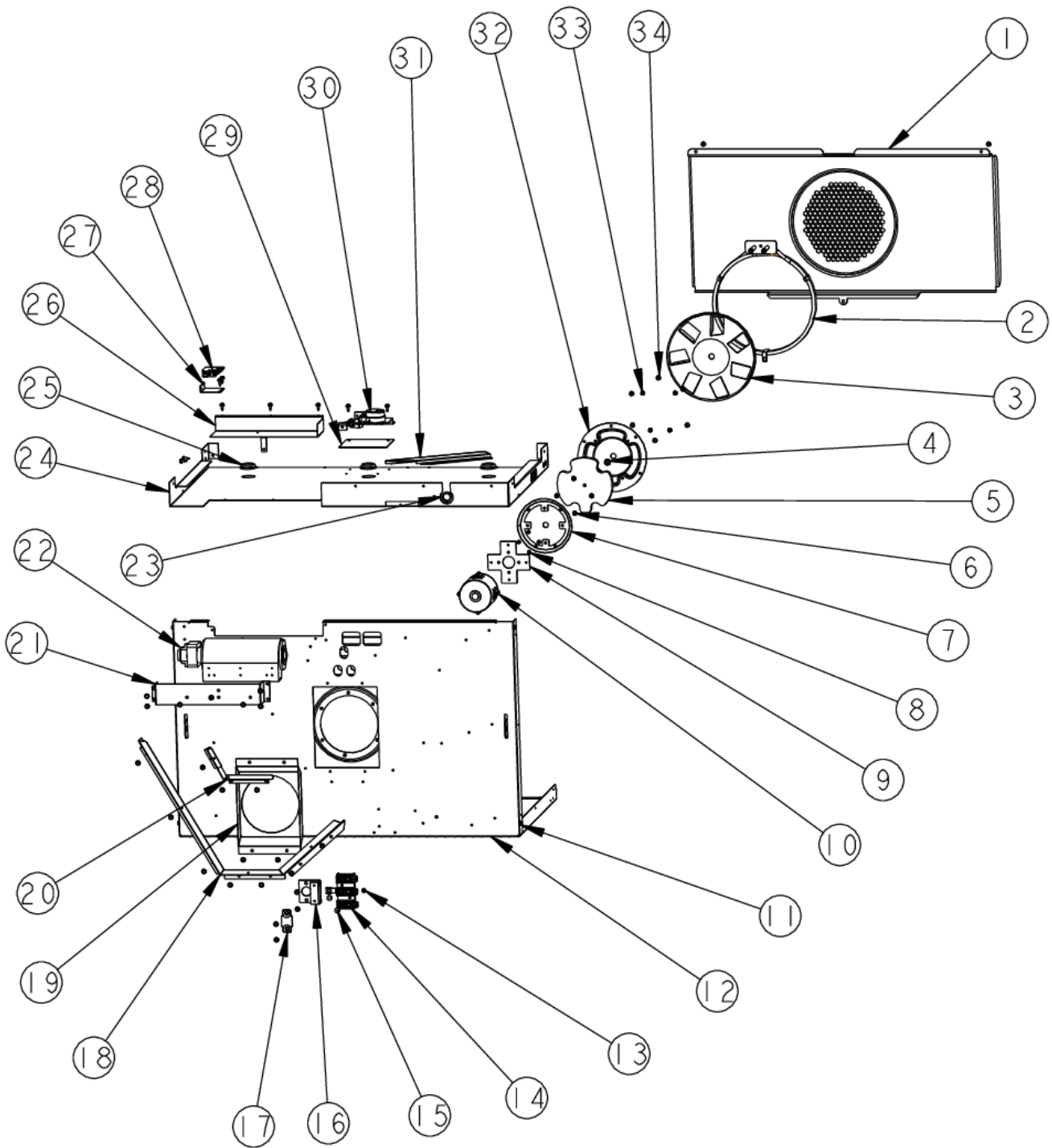
Item	Part No.	Name	Qty	Uom	NOTES
31	B21010916	HINGE CLIP - LH	1	EA	
32	PD020061	#8 X 3/4 FLAT HD TEK. *SS*	2	EA	
NI	PE050206	RTD THERMOSTAT PROBE	1	EA	
NI	003803-000	SIDE PANEL ASSY, LH	1	EA	
NI	003802-000	SIDE PANEL ASSY, RH, SST	1	EA	
NI	005382-000	KICKPLATE, SS, VDSC36"	1	EA	

REAR AREA





Item	Part No.	Name	Qty	Uom	NOTES
1	006177-000	BAFFLE, CNVNV, ASM, VDSC 36"	1	EA	
2	PJ010047	CONVECTION ELEMENT	1	EA	
3	PE050227	CONVECTION FAN BLADE ASSY	1	EA	
4	PD030149	5/16 NUT	1	EA	
5	PB070312	CONVECTION MOTOR MTG. PLATE INSULATION	1	EA	
6	PD020004	Screw, 10 X 3/8 Ph	4	EA	
7	A21012728	BRKT, MTG, CONV MOTOR	1	EA	
8	PD010028	BOLT M4X5	4	EA	
9	A10012735	EBM FAN MOTOR ADAPTER	1	EA	
10	PE050203	CONVECTION MOTOR	1	EA	
11	003860-000	10-18 x .500 FASTNR,SCR,HXWH,STL,ZPLT	36	EA	
12	004543-000	OVEN BOTTOM, BACK WRAP ASSY 36"	1	EA	
13	PD020010	Green Grounding Screw	1	EA	
14	PE070147	Terminal Block	1	EA	
15	PD020014	Screw, 10 X 3/4 Ph Tr SMS	2	EA	
16	A2002195	POWER CORD MOUNTING BRKT	1	EA	
17	A1002457	POWER CORD MOUNTING STRAP (VDSC)	1	EA	
18	002941-000	BAFFLE, FAN, REAR	1	EA	
19	A2009697	BRACKET, CONVECTION INSULATION	1	EA	
20	003356-000	DIVERTER, AIR	1	EA	
21	004110-000	Blower Mount	1	EA	
22	PE050250	Blower	1	EA	
Not Shown	NOTE	(BEFORE 8/10/2013)		EA	
22	018607-000	FAN, BLO, 220-240V 50/60Hz ASM (MT1664)	1	EA	
Not Shown	NOTE	(ON OR AFTER 8/10/2013)		EA	
23	PD040005	SNAP BUSHING - 7/8	1	EA	
24	004547-000	RANGE TOP BRACE, AIR CHANNEL, 36"	1	EA	



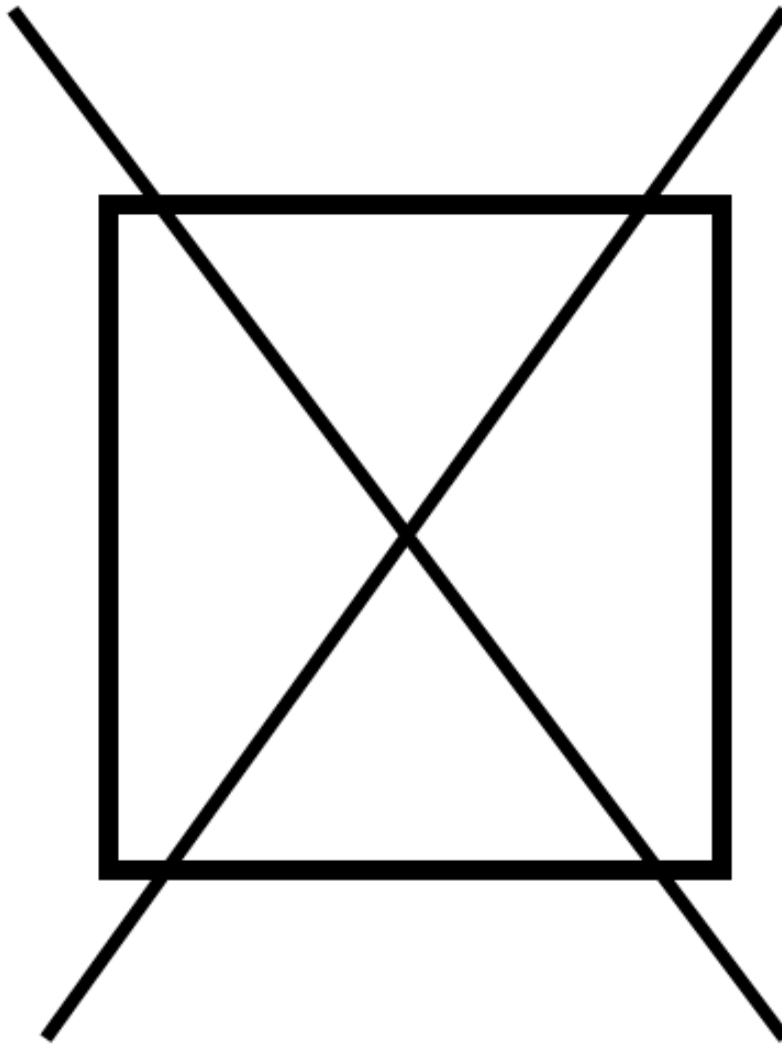


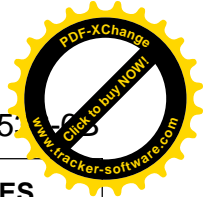
VDSC5:



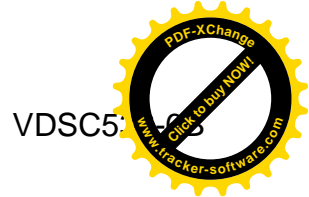
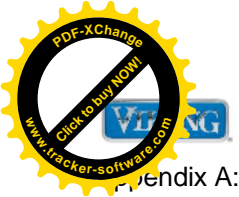
Item	Part No.	Name	Qty	Uom	NOTES
25	PB070079	Silicone Extrusion	3	EA	
26	A2009659	Blower Bracket	1	EA	
27	A20012649	Door Switch Bracket	1	EA	
28	PE050208	Door Switch	1	EA	
29	PB070321	Lower Latch Insulation	1	EA	
30	PE050210	Door Latch	1	EA	
31	004698-000	FLUE DUCT, VDSC36"	1	EA	
32	E91012727	PLATE, MOUNTING, CONV MOTOR	1	EA	
33	PD020055	' #10 X 1/2" PAN PHIL. TEK.*SS*	4	EA	
34	PD020048	Screw, 10 X 1/2 Hex Washer Hd Tek	11	EA	

# NON ILLUSTRATED PART



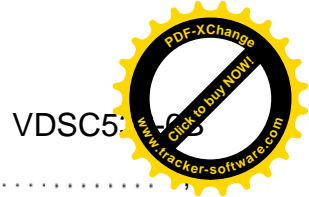
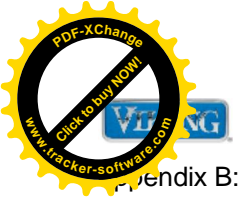


Item	Part No.	Name	Qty	Uom	NOTES
NI	015103-000	HARNESS,TEST,VDSC-T MODELS	1	EA	
NI	024871-000	MAIN HARNESS	1	EA	
NI	PE070739	BAKE ELEMENT HARNESS	1	EA	
NI	023340-000	IRIS HARNESS, 36"	1	EA	
NI	001134-000	IRIS HARNESS INSULATED CAP	1	EA	
NI	020019-000	HARNESS, WRG, CONTROL	1	EA	
NI	024909-000	SHIELD, WRG	1	EA	
NI	000647-000	IRIS IGNITOR WIRE, FRONT BURNER	3	EA	
NI	006766-000	IRIS IGNITOR WIRE, BACK BURNER	3	EA	



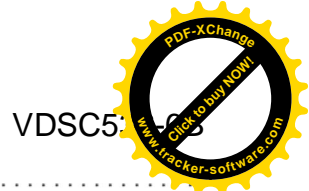
Appendix A: Pages Index

BASE ASSY .....	1
BURNER BOX .....	2
BURNER SURFACE .....	3
CONTROL PANEL .....	4
DOOR ASSY .....	5
GRILL ASSY .....	6
LOWER UNIT AND SIDE PANELS .....	7
OVEN MODULE .....	8
REAR AREA .....	9
WIRING .....	10

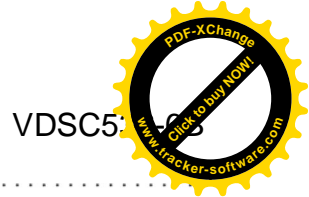
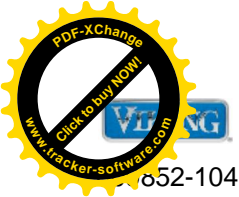


Appendix B: Parts Index

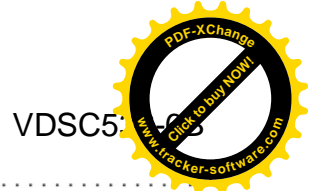
000594-000	5	003803-000	
000621-000	1	003860-000	1, 2, 3, 6, 7, 8, 9
000647-000	10	004021-000	3
000714-000	2	004110-000	9
000915-000	1	004153-000	5
001134-000	10	004503-000	1
001394-041	2	004541-000	8
001394-042	2	004543-000	9
001394-044	2	004547-000	9
001394-046	2	004602-000	2
002713-402	5	004603-000	2
002726-000	5	004606-000	7
002736-000	5	004607-000	7
002755-000	2	004698-000	9
002884-000	2	004907-000	5
002920-000	3	005269-000	4
002923-000	2	005270-000	4
002941-000	9	005271-000	4
003011-000	5	005311-000	8
003011-100	5	005312-000	8
003012-000	5	005381-000	7
003012-100	5	005382-000	1, 7, 8
003039-000	8	005480-000	2
003040-000	8	005503-002	7
003050-000	1	005503-003	7
003053-000	1	005503-004	7
003054-000	1	005503-005	7
003322-041	3	005503-006	7
003326-000	1	005503-008	7
003327-000	1	005503-009	7
003328-000	1	005503-010	7
003356-000	9	005503-012	7
003481-000	2	005503-013	7
003606-000	3	005503-015	7
003649-000	3	005503-016	7
003719-000	4	005503-017	7
003761-000	1	005503-018	7
003763-000	1	005503-019	7
003801-000	7	005503-020	7
003802-000	7, 8	005503-021	7
		005503-022	7



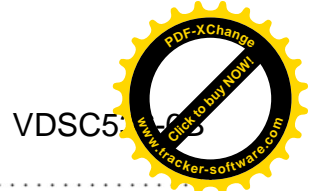
00503-023	7	006900-000	5
005503-024	7	006996-000	5
005503-025	7	006999-000	5
005503-026	7	007000-000	8
005503-027	7	007323-000	3
005506-002	7	007488-000	7
005506-003	7	007726-000	2
005506-004	7	007782-000	6
005506-005	7	007878-000	6
005506-006	7	008152-000	6
005506-008	7	008637-000	2
005506-009	7	008840-000	3
005506-010	7	009632-000	1
005506-012	7	009852-002	5
005506-013	7	009852-003	5
005506-015	7	009852-004	5
005506-016	7	009852-005	5
005506-017	7	009852-006	5
005506-018	7	009852-007	5
005506-019	7	009852-008	5
005506-020	7	009852-009	5
005506-021	7	009852-010	5
005506-022	7	009852-011	5
005506-023	7	009852-012	5
005506-024	7	009852-013	5
005506-025	7	009852-014	5
005506-026	7	009852-015	5
005506-027	7	009852-016	5
005953-000	8	009852-017	5
006015-000	2	009852-018	5
006076-000	5	009852-019	5
006080-000	5	009852-020	5
006082-000	5	009852-021	5
006086-000	5	009852-022	5
006089-000	5	009852-023	5
006177-000	9	009852-024	5
006706-000	3	009852-025	5
006766-000	10	009852-026	5
006788-000	5	009852-027	5
006807-000	5	009852-102	5
006808-000	5	009852-103	5



009852-104	5	009915-019	5
009852-105	5	009915-020	5
009852-106	5	009915-021	5
009852-107	5	009915-022	5
009852-108	5	009915-023	5
009852-109	5	009915-024	5
009852-110	5	009915-025	5
009852-111	5	009915-026	5
009852-112	5	009915-027	5
009852-113	5	009915-102	5
009852-114	5	009915-103	5
009852-115	5	009915-104	5
009852-116	5	009915-105	5
009852-117	5	009915-106	5
009852-118	5	009915-107	5
009852-119	5	009915-108	5
009852-120	5	009915-109	5
009852-121	5	009915-110	5
009852-122	5	009915-111	5
009852-123	5	009915-112	5
009852-124	5	009915-113	5
009852-125	5	009915-114	5
009852-126	5	009915-115	5
009852-127	5	009915-116	5
009915-002	5	009915-117	5
009915-003	5	009915-118	5
009915-004	5	009915-119	5
009915-005	5	009915-120	5
009915-006	5	009915-121	5
009915-007	5	009915-122	5
009915-008	5	009915-123	5
009915-009	5	009915-124	5
009915-010	5	009915-125	5
009915-011	5	009915-126	5
009915-012	5	009915-127	5
009915-013	5	010168-000	6
009915-014	5	010989-002	1, 7
009915-015	5	010989-003	1, 7
009915-016	5	010989-004	1, 7
009915-017	5	010989-005	1, 7
009915-018	5	010989-006	1, 7



989-008 .....	1, 7	021312-021 .....	5
010989-009 .....	1, 7	021312-022 .....	5
010989-010 .....	1, 7	021312-023 .....	5
010989-012 .....	1, 7	021312-024 .....	5
010989-013 .....	1, 7	021312-025 .....	5
010989-015 .....	1, 7	021312-026 .....	5
010989-016 .....	1, 7	021312-027 .....	5
010989-017 .....	1, 7	021340-000 .....	1
010989-018 .....	1, 7	023340-000 .....	10
010989-019 .....	1, 7	024302-000 .....	2
010989-020 .....	1, 7	024398-000 .....	2
010989-021 .....	1, 7	024871-000 .....	10
010989-022 .....	1, 7	024909-000 .....	1, 10
010989-023 .....	1, 7	031108-2072 .....	4
010989-024 .....	1, 7	031679-000 .....	8
010989-025 .....	1, 7	035881-000 .....	4
010989-026 .....	1, 7	035893-000 .....	4
010989-027 .....	1, 7	035895-000 .....	4
011637-000 .....	4	046142-000 .....	1
015043-000 .....	4	050172-000 .....	4
015096-000 .....	1	A10012735 .....	9
015103-000 .....	10	A1002457 .....	9
018607-000 .....	9	A20012649 .....	9
020019-000 .....	10	A20012650 .....	8
021311-000 .....	5	A2002195 .....	9
021312-002 .....	5	A2009622 .....	8
021312-003 .....	5	A2009641 .....	8
021312-004 .....	5	A2009659 .....	9
021312-005 .....	5	A2009696 .....	8
021312-006 .....	5	A2009697 .....	9
021312-008 .....	5	A21012728 .....	9
021312-009 .....	5	B20014050 .....	8
021312-010 .....	5	B20014051 .....	8
021312-012 .....	5	B21010915 .....	8
021312-013 .....	5	B21010916 .....	8
021312-015 .....	5	E9101130BK .....	6
021312-016 .....	5	E91012727 .....	9
021312-017 .....	5	E91014053 .....	8
021312-018 .....	5	E9107933 .....	8
021312-019 .....	5	E9107934 .....	8
021312-020 .....	5	E9108439BK .....	3



09655 .....	8	PE050206 .....	9
PA020028 .....	6	PE050208 .....	9
PA020058 .....	2	PE050210 .....	9
PA070001 .....	2	PE050227 .....	9
PA080083 .....	3	PE050247 .....	1
PB010304 .....	4	PE050250 .....	9
PB020192 .....	2	PE060094 .....	5
PB020193 .....	2	PE070147 .....	9
PB020275 .....	8	PE070734 .....	1
PB070079 .....	9	PE070739 .....	10
PB070312 .....	9	PJ010047 .....	9
PB070321 .....	9	PJ010048 .....	8
PC030007 .....	1	PJ010050 .....	8
PC030031 .....	1	PJ030033 .....	4
PD010012 .....	2	PJ030035 .....	4
PD010028 .....	9	PM010014 .....	8
PD020004 .....	9		
PD020010 .....	2, 9		
PD020014 .....	9		
PD020032 .....	4, 5, 7		
PD020043 .....	1		
PD020048 .....	7, 8, 9		
PD020055 .....	9		
PD020061 .....	8		
PD020062 .....	4, 8		
PD020063 .....	8		
PD020067 .....	8		
PD020073 .....	5		
PD020076 .....	2		
PD020232 .....	8		
PD030006 .....	5		
PD030010 .....	5		
PD030149 .....	9		
PD030172 .....	1		
PD040004 .....	4		
PD040005 .....	9		
PD040164 .....	1		
PE010030 .....	5		
PE050023 .....	4		
PE050072 .....	4		
PE050203 .....	9		