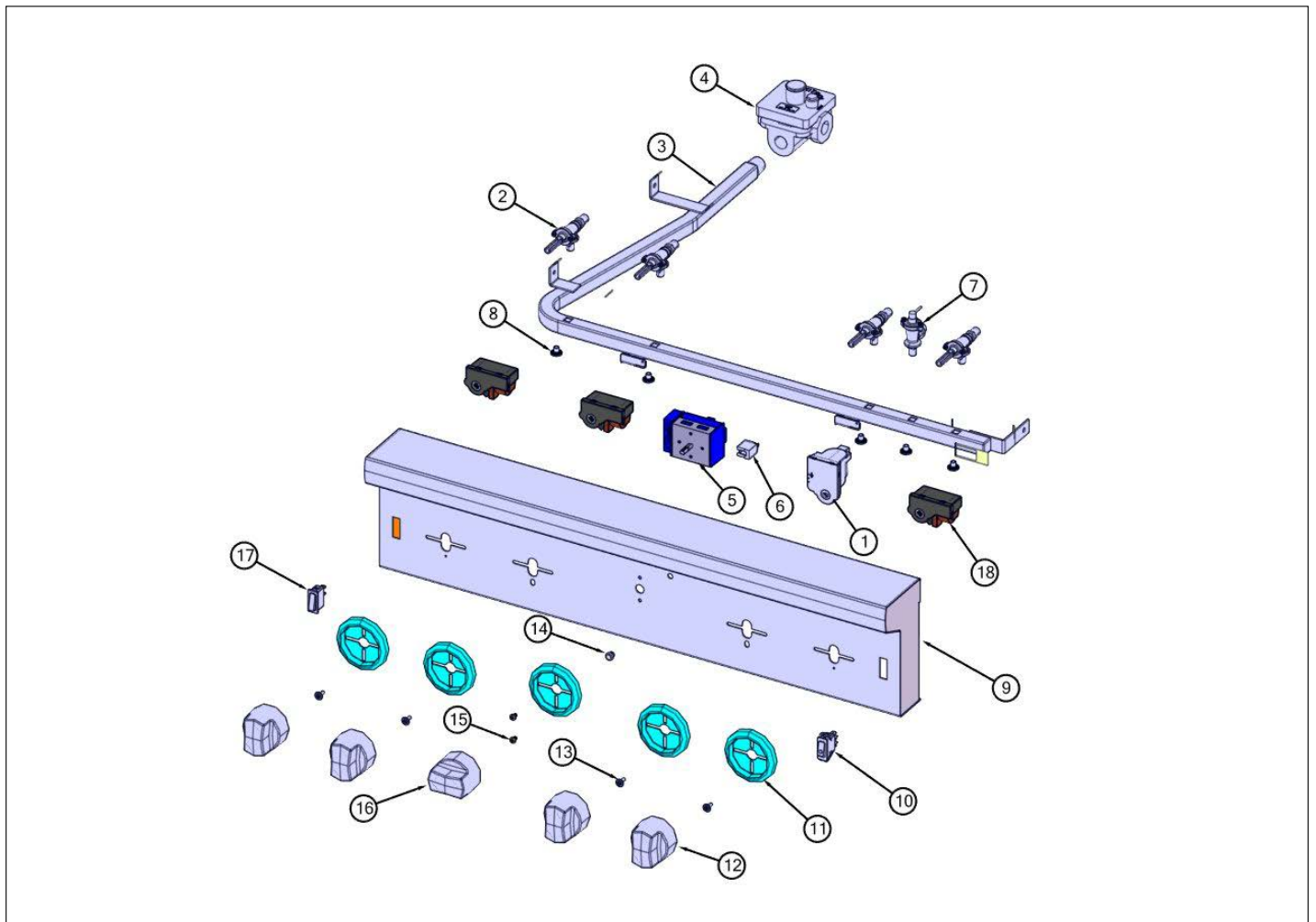


VGIC53014BSS03

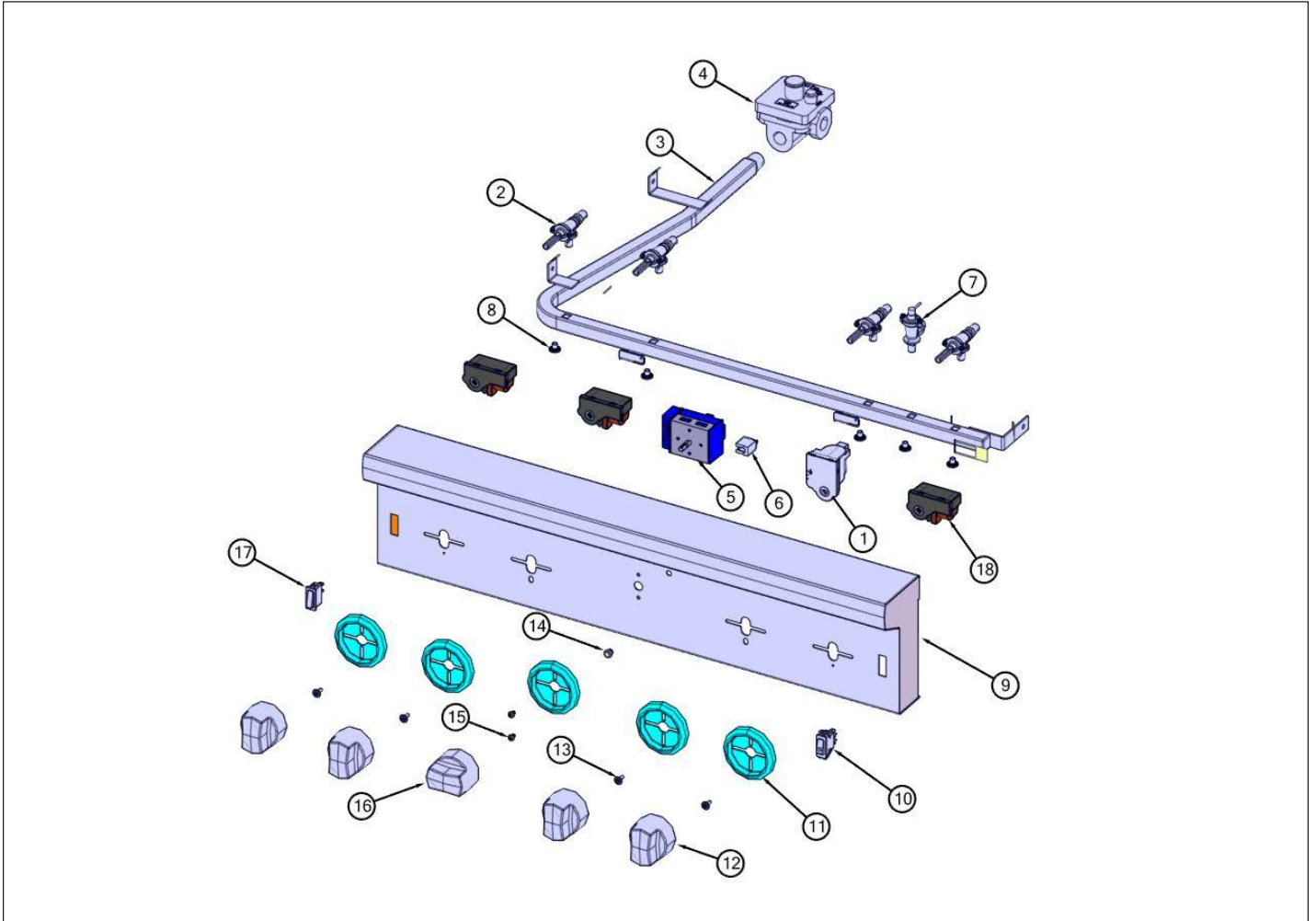
Control View	1
Surface Cooking View	2
Cavity View	3
Rear View	4
Lower Unit and Side Panel View	5
Burner Box Asm View	6
Door View	7
Wiring View 1	8
Wiring View 2	9
Appendix A:Pages Index	A
Appendix B:Parts Index	B

Control View





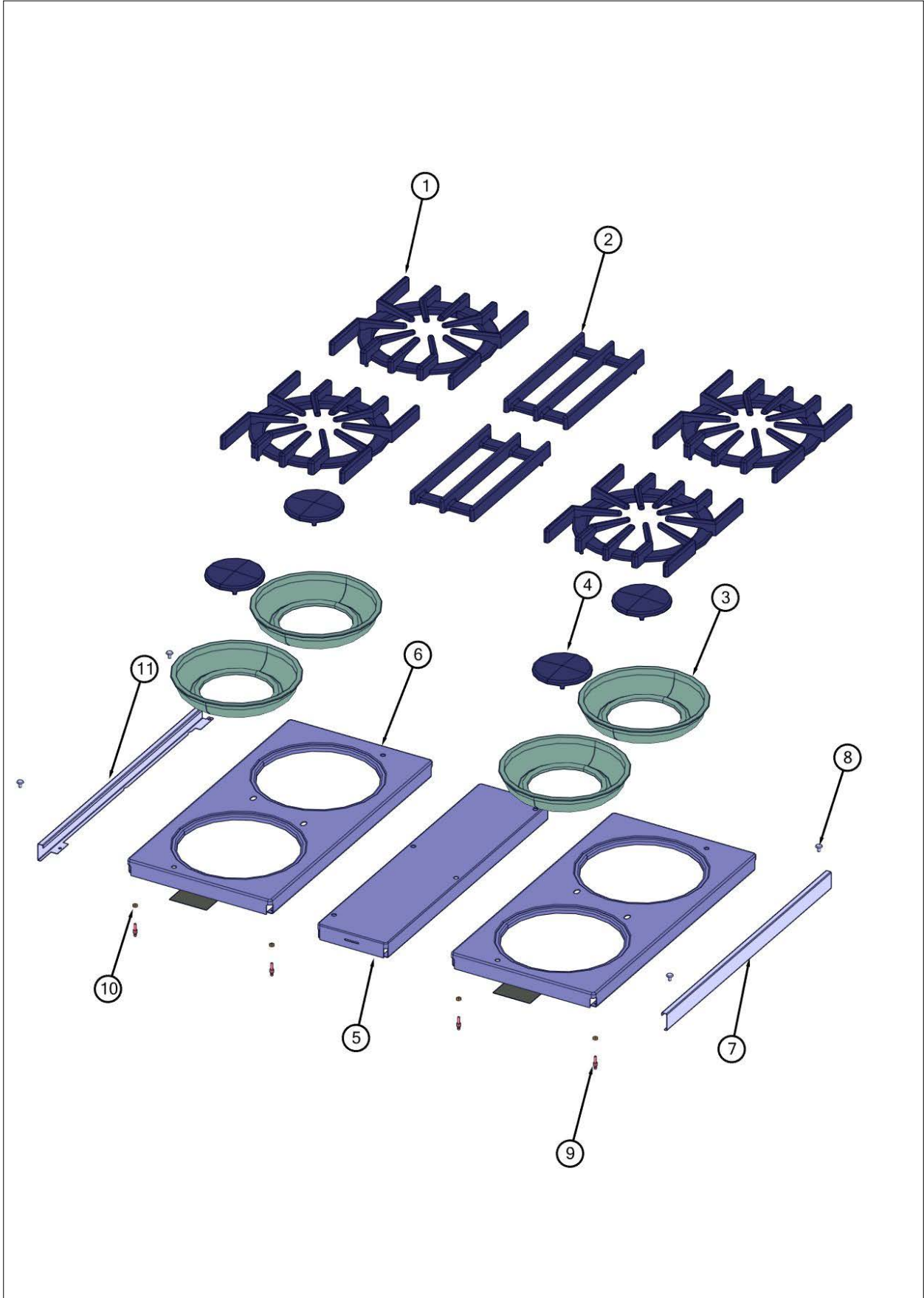
Item	Part No.	Name	Qty	Uom	NOTES
1	PA020058	IRIS SINGLE SPARK MODULE	4	EA	
2	023405-000	VALVE, BURNER, TOP, NAT.	4	EA	
NI	PB040034	ORIFICE HOOD-#50 (NAT)	4	EA	
2	023501-000	VALVE, BURNER, TOP, LP	4	EA	
NI	PB040036	ORIFICE HOOD-#57 (LP)	4	EA	
3	016978-000	MANIFOLD, 30"	1	EA	
4	PA070003	PRESSURE REGULATOR (NAT.)	1	EA	
4	013386-000	LP PRESSURE REGULATOR	1	EA	
5	013213-000	TSTAT, SMPS, ELEC, 2-POS, .91" SHAFT, CB	1	EA	
6	PE050024	OVEN IND. LIGHT (LIGHT HOUSING)	1	EA	
<p>Comments for Part Num. PE050024</p> <p>haarnink@vikingrange.com on Jan 14, 2019</p> <p>please not that the indicator light is now part 043135-000 but needs the Jumper harness 051443-000. and second option there are units in the field with a 230V indicator light part number 036566-000.</p> <p>please check this for all "E" module ranges/Tops</p>					
7	007147-000	SHUT OFF VALVE	1	EA	
8	PD010012	VALVE BOLT 1/4-20 UNC-2B 5/16" M.S.	5	EA	
9	031251-2255	CONTROL PANEL ASM, VGIC530-4B W/GRAPHICS	1	EA	
10	006355-000	SPLASHPROOF ROCKER SWITCH	1	EA	
11	050172-000	BEZEL, KNOB	5	EA	
11	PB010304PVD	RESTYLE KNOB BEZEL, BR	5	EA	
12	005269-000	RANGE TOP BURNER KNOB-BRUSHED, SSS	4	EA	
Not Shown	NOTE	BEFORE 12/20/12		EA	
12	035881-000	KNOB, BNR, TOP PRO CR3	4	EA	
Not Shown	NOTE	AFTER 12/20/12		EA	
13	PD020046	' #8 X 1/2 SCREWS	4	EA	
14	PE050023	OVEN IND. LIGHT (LENS & BEZEL)	1	EA	





Item	Part No.	Name	Qty	Uom	NOTES
15	PD020269	#8 PAN HEAD SCREW	2	EA	
16	008416-000	KNOB, THERMOSTAT, #3 SSS, ASM, VGCC	1	EA	
Not Shown	NOTE	BEFORE 12/20/12		EA	
16	035891-000	KNOB,OVN,TSTAT, PRO VGCC CR3	1	EA	
Not Shown	NOTE	AFTER 12/20/12		EA	
17	003719-000	OVEN LIGHT SWITCH, BLACK	1	EA	
18	035795-000	MODULE, IGN, GAS,SNGL	3	EA	

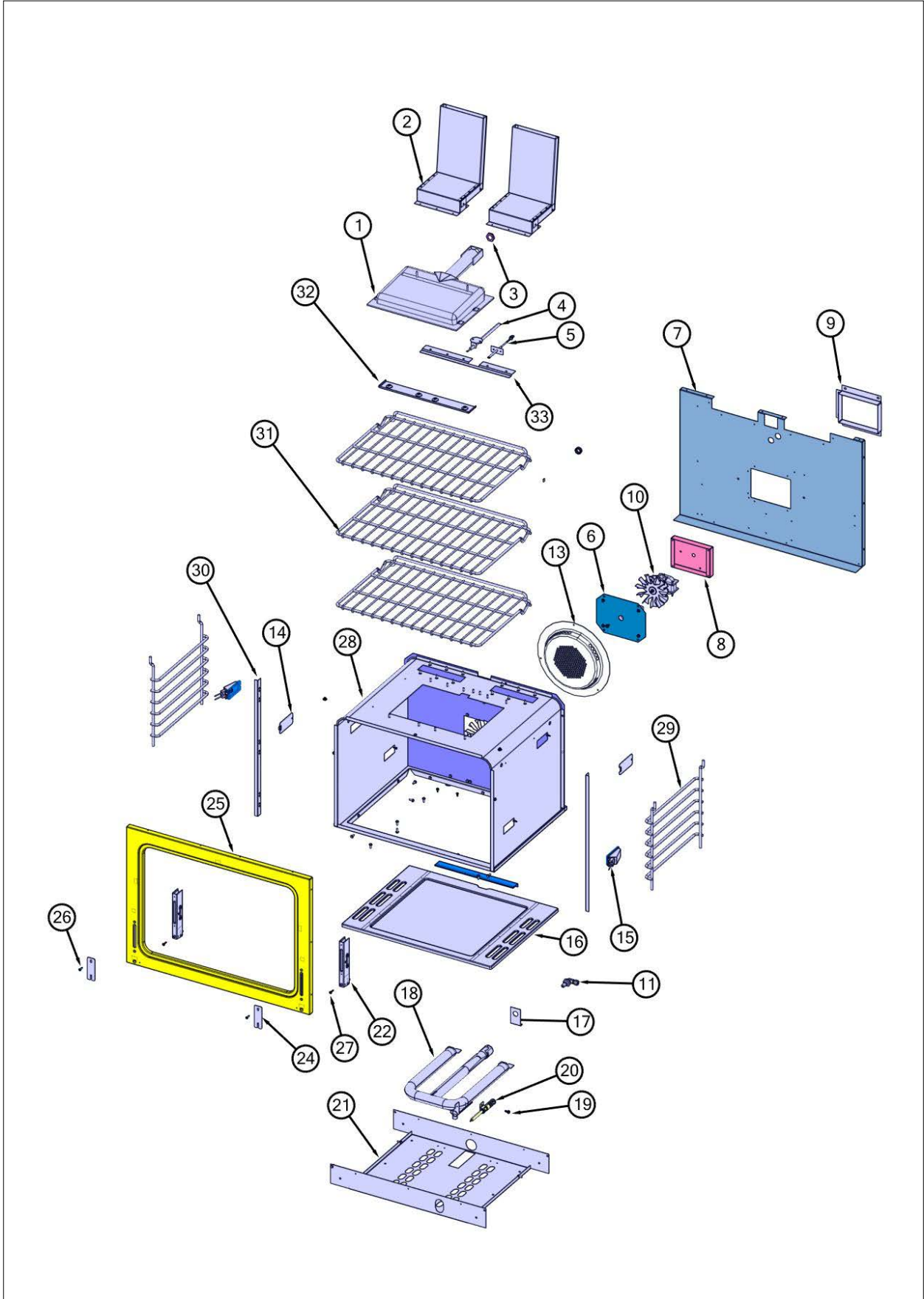
Surface Cooking View





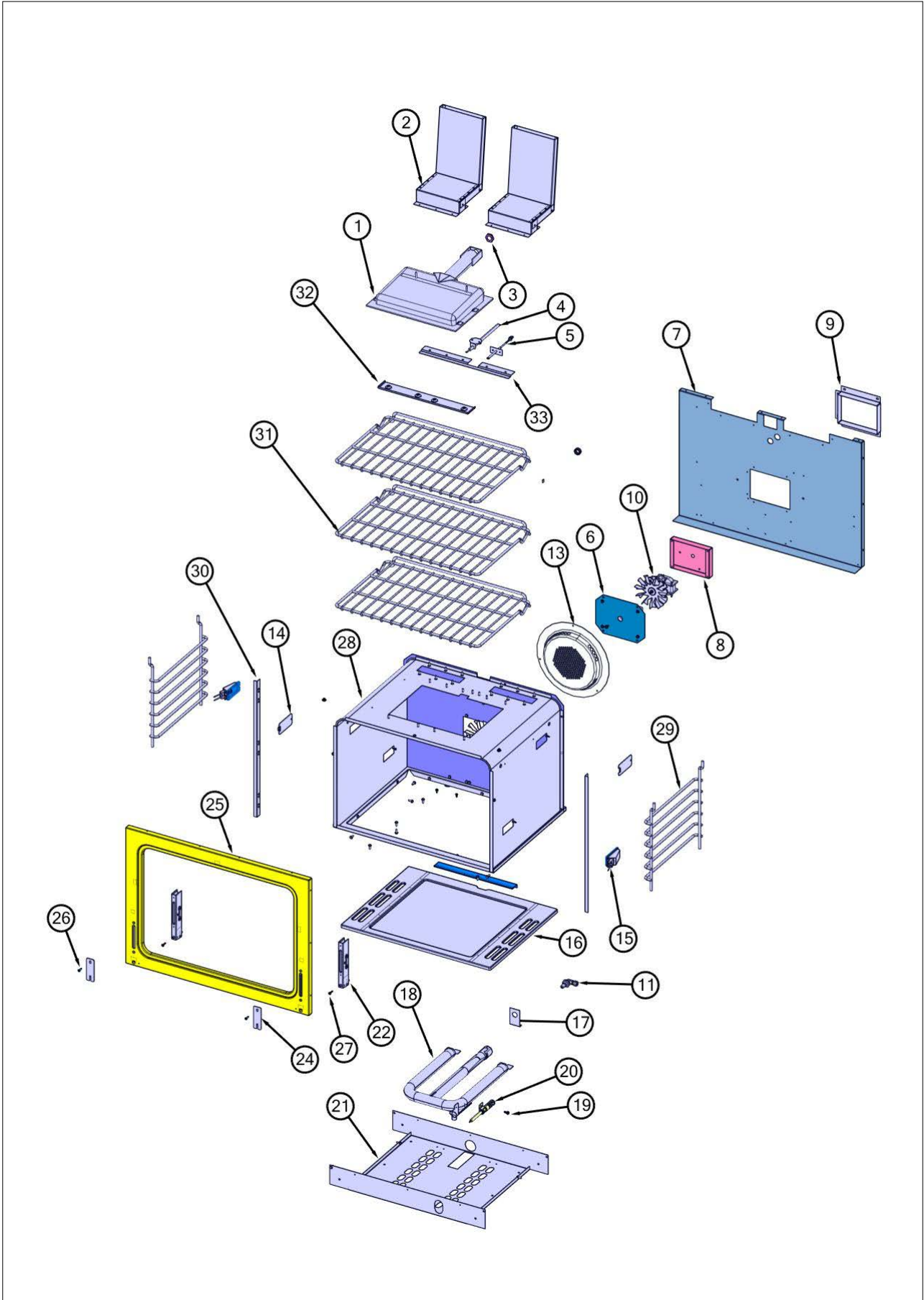
Item	Part No.	Name	Qty	Uom	NOTES
1	PA060037	GRATE BK REPL PA060024 (GEN.#2)	4	EA	
<p>Comments for Part Num. PA060037</p> <p>bradleysapplianceservice@shaw.ca on Jun 16, 2020 SUBS TO: 067027-000 GRATE BK 10 X 11</p>					
2	072065-000	WRAP, CENTER, GRATE ASSY (PACK OF 2)	2	EA	
3	PA030002BK	BURNER BOWL (VGRT) **BK**	4	EA	
4	066982-000	CAP, BURNER, OPEN, BLK	4	EA	
5	E9104416BK	CENTER SPACER (VGSC306) *BK*	1	EA	
<p>Comments for Part Num. E9104416BK</p> <p>bradleysapplianceservice@shaw.ca on Jan 15, 2020 BEFORE 06/2015</p>					
6	E9101115BK	GRATE SUPT *BK* (VGRT)	2	EA	
7	015496-000	TRIM, SIDE RH	1	EA	
8	PD020033	SRW-#10-24X1/2"T(23)PH.WFR HD (NKL)	4	EA	
9	PD010017	BALL STUD (VGRT)	6	EA	
10	PD030012	6-32 HEX NUT	6	EA	
11	015497-000	TRIM, SIDE LH	1	EA	

Cavity View



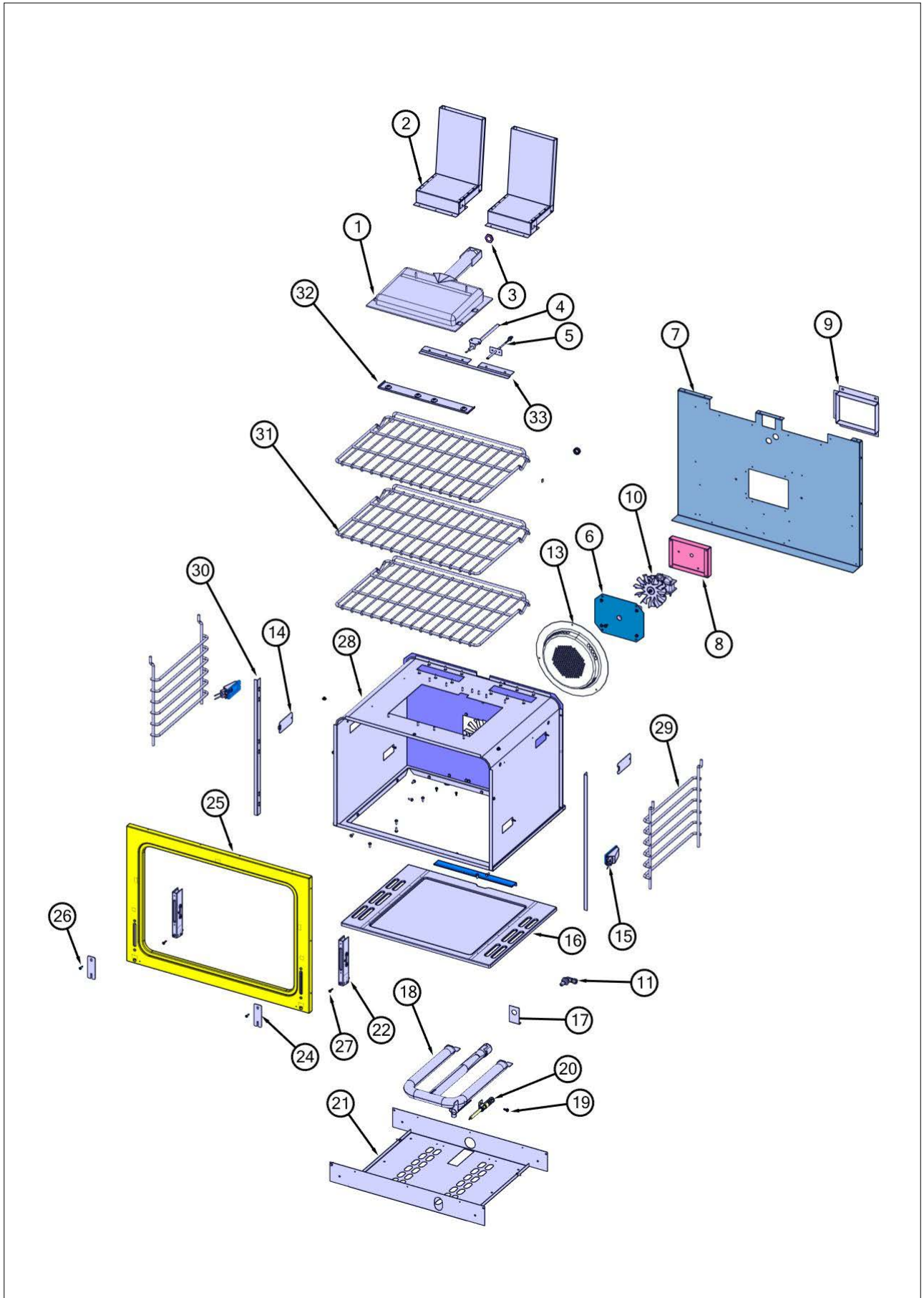


Item	Part No.	Name	Qty	Uom	NOTES
1	G3001876	IR BURNER ASSY (VGSC/RC) N/S	1	EA	
2	006192-000	VENT, ASM, OVEN ASSEMBLY	2	EA	
3	PD030018	PALNUT - 3/4-16	2	EA	
4	PB040171	BROIL IGNITION ELECTRODE	1	EA	
5	PE050206	RTD THERMOSTAT PROBE	1	EA	
6	021199-000	COVER, BOX, INSULATION	1	EA	
7	004626-000	PANEL, BACK, INSULATION, 30"	1	EA	Not available online / Call for pricing and availability
8	A2002595	CONVECTION FAN BOX (VDSC)	1	EA	
9	A2008467	INSULATION SHIELD	1	EA	
Not Shown	NOTE	(NO LONGER USED ON THIS MODEL)		EA	
10	PE050057	CONVECTION FAN (VGSC306)	1	EA	
Not Shown	NOTE	(BEFORE 8/31/11)		EA	
10	023090-000	MOTOR, CONV ASM	1	EA	
Not Shown	NOTE	(ON OR AFTER 8/31/11)		EA	
11	058554-000	90 DEG ORIFICE FITTING, #34	1	EA	
NI	PB040071	NATURAL BAKE ORIFICE #35	1	EA	
Not Shown	NOTE	(NAT ORIFICE FOR BAKE)		EA	
11	048028-000	90 DEG ORIFICE FITTING #51 DRILL	1	EA	
NI	PB040035	ORIFICE HOOD-#51 9701B1651	1	EA	
Not Shown	NOTE	(LP ORIFICE FOR BAKE)		EA	
13	021225-402	COVER, CNVN, ASM, BK PORC	1	EA	
Not Shown	NOTE	(BEFORE 11/30/17)		EA	
13	013580-402	CONV COVER W/BK PORC	1	EA	
Not Shown	NOTE	(ON OR AFTER 11/30/17)		EA	
14	E91012614	LIGHT HOLE COVER	2	EA	





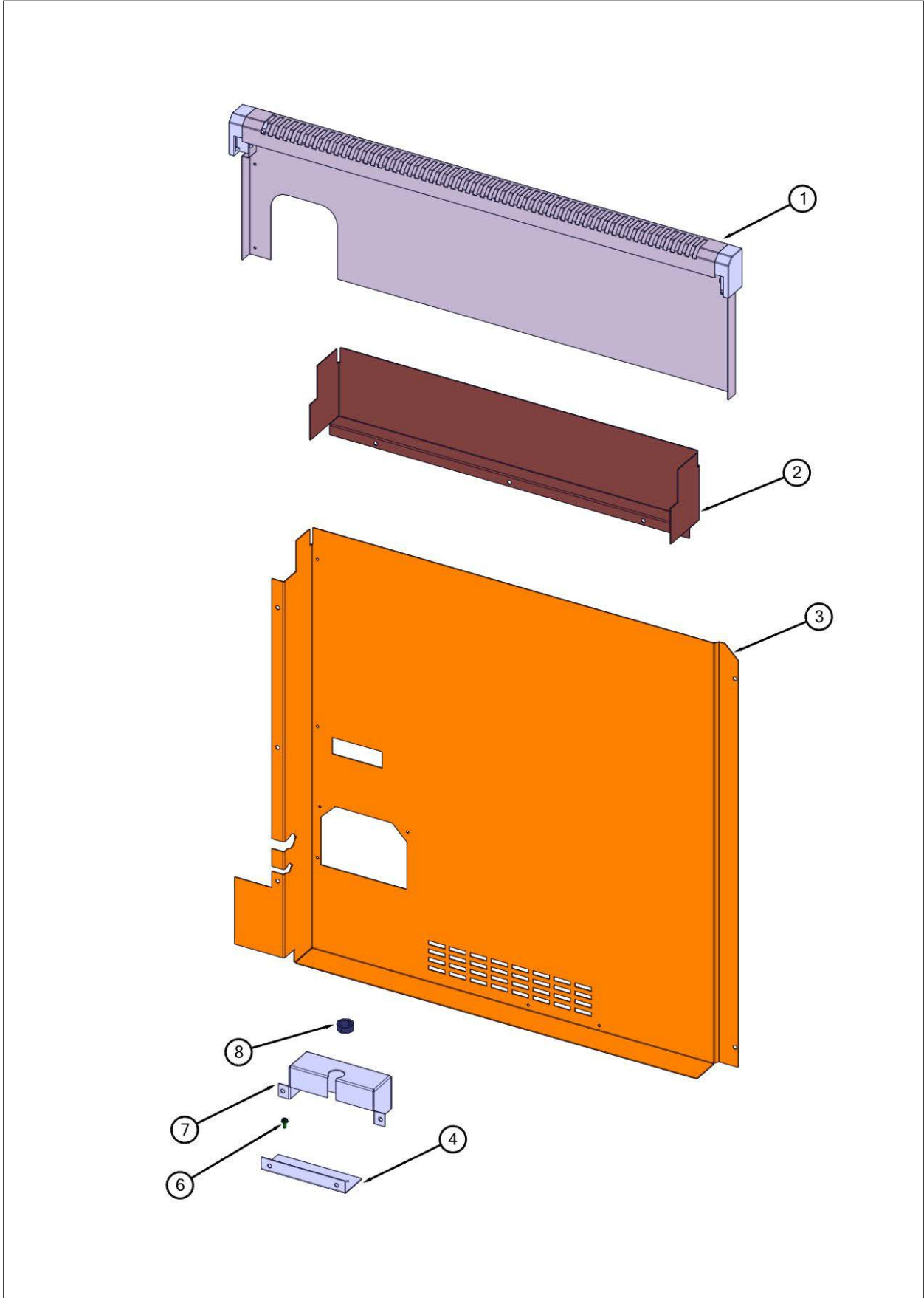
Item	Part No.	Name	Qty	Uom	NOTES
15	068653-601	LIGHT, 120V/25W, G9, HALOGEN, SIDE (REPLACEMENT BULB USE 074235-000)	2	EA	
16	066203-000	OVEN, BOTTOM, ASM,PORCELAIN, BK	1	EA	
17	005529-000	BAKE ORIFICE MOUNTING BRACKET	1	EA	
Not Shown	NOTE	(BEFORE 2/11/13)		EA	
17	040736-000	BRKT, ORF	1	EA	
Not Shown	NOTE	(ON OR AFTER 2/11/13)		EA	
18	044096-000	BURNER, BAKE, ASM, 30"	1	EA	
18	044246-000	BURNER, BAKE, ASM, 30"- LP	1	EA	
19	023005-000	SCREW-SM	1	EA	
20	PB040170	BAKE IGNITION ELECTRODE	1	EA	
21	005102-000	BURNER PAN ASSEMBLY	1	EA	
22	031679-000	RECEPTACLE, HINGE	2	EA	
24	007278-000	ARM HINGE CLIP	2	EA	
Not Shown	NTOE	(BEFORE 01/02/13)		EA	
24	049718-402	CLIP, RETAINER, HINGE, GLOSS BLACK ENAMEL	2	EA	
Not Shown	NOTE	(AFTER 01/02/13)		EA	
25	005373-000	30" FRONT FRAME WELD ASSY	1	EA	
26	PD020061	' #8 X 3/4 FLAT HD TEK. *SS*	2	EA	
27	PD020232	#8 X 3/4" PH PAN HEAD TEK SCREW (BLACK OXIDE)	2	EA	
28	005047-000	OVEN CAVITY WELD	1	EA	Not available online / Call for pricing and availability
29	PB060030	RACK SUPT REPL PB060010	2	EA	
Not Shown	NOTE	BEFORE 12/20/12		EA	
29	066225-402	GUIDE, RACK, RH- BK	2	EA	
Not Shown	NOTE	(ON OR AFTER 12/20/12)		EA	
30	005536-000	TRIM	2	EA	





Item	Part No.	Name	Qty	Uom	NOTES
31	065467-000	RACK, PRO, W/HDL, 30"	3	EA	
32	B2001448	IR BROIL SUPT (FRONT)	1	EA	
33	B2005589	REAR BROILER BRACKET	2	EA	Not available online / Call for pricing and availability
NI	PD030118	INSULATED CLAMP	1	EA	
NI	056013-000	INSULATION, FIBERGLASS, ROLL, 3" THK, 20" WIDE X 45' LONG	10SF	EA	
NI	PB040040	ORIFICE-IR BURNER (VGSC) (NAT #47)	1	EA	
Not Shown	NOTE	(NAT ORIFICE FOR BROIL)		EA	
NI	PB040027	IR BUR.SPUD ORF. - #56 LP	1	EA	
Not Shown	NOTE	(LP ORIFICE FOR BROIL)		EA	

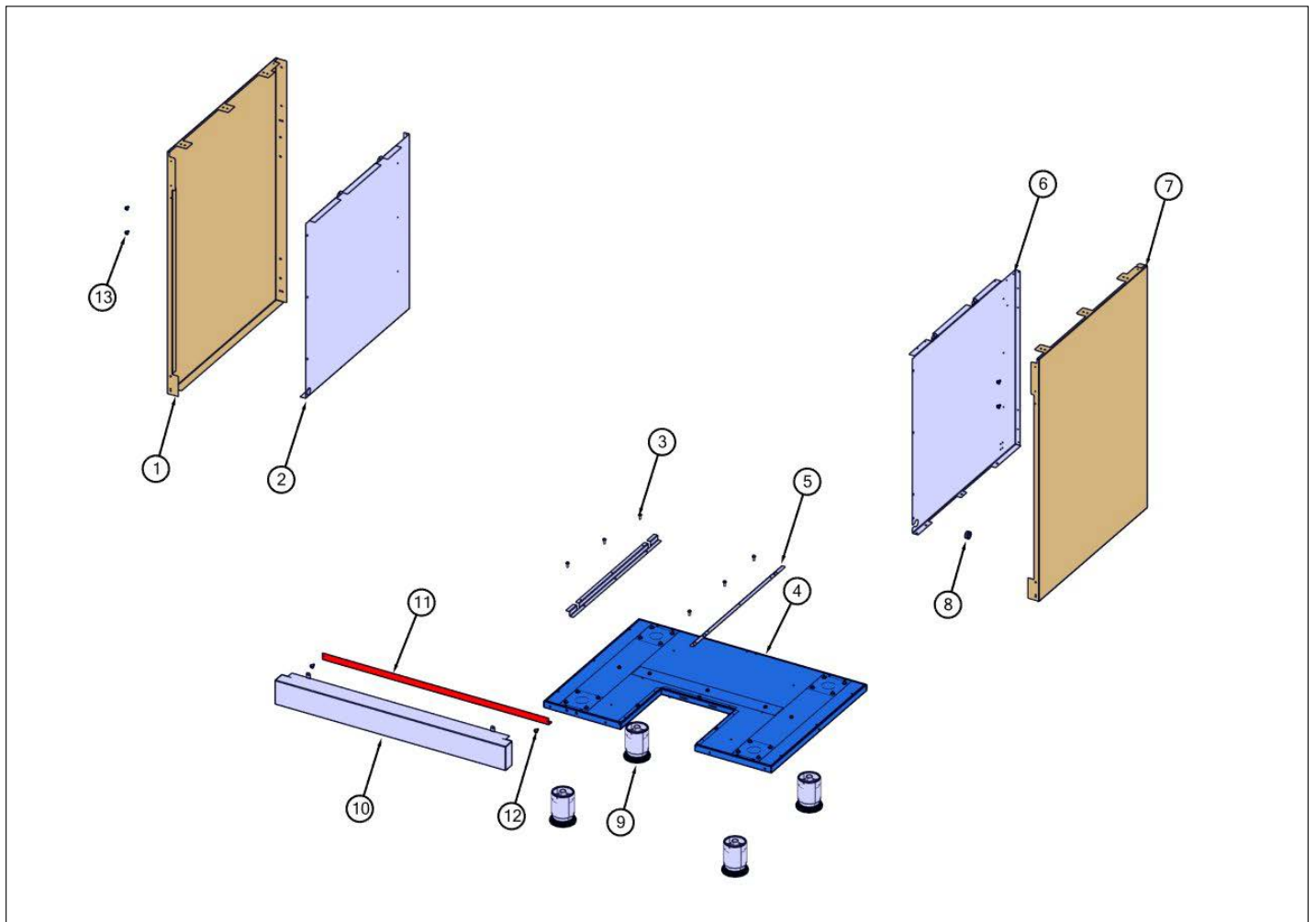
Rear View





Item	Part No.	Name	Qty	Uom	NOTES
1	041445-000	TRIM, IS, ASSY, 30"	1	EA	
2	019160-000	BACK COLLAR, 30"	1	EA	
3	032123-000	CABINET, BACK	1	EA	
4	007484-000	TERMINAL, BLOCK, BRACKET	1	EA	
6	PD020010	10 X 3/8 GREEN GROUNDING SCREW	1	EA	
7	031961-000	COVER, TERM. BLOCK	1	EA	
8	PD040005	SNAP BUSHING - 7/8	1	EA	
NI	023263-000	TOGGLE BOLT (3/16" X 2")	1	EA	

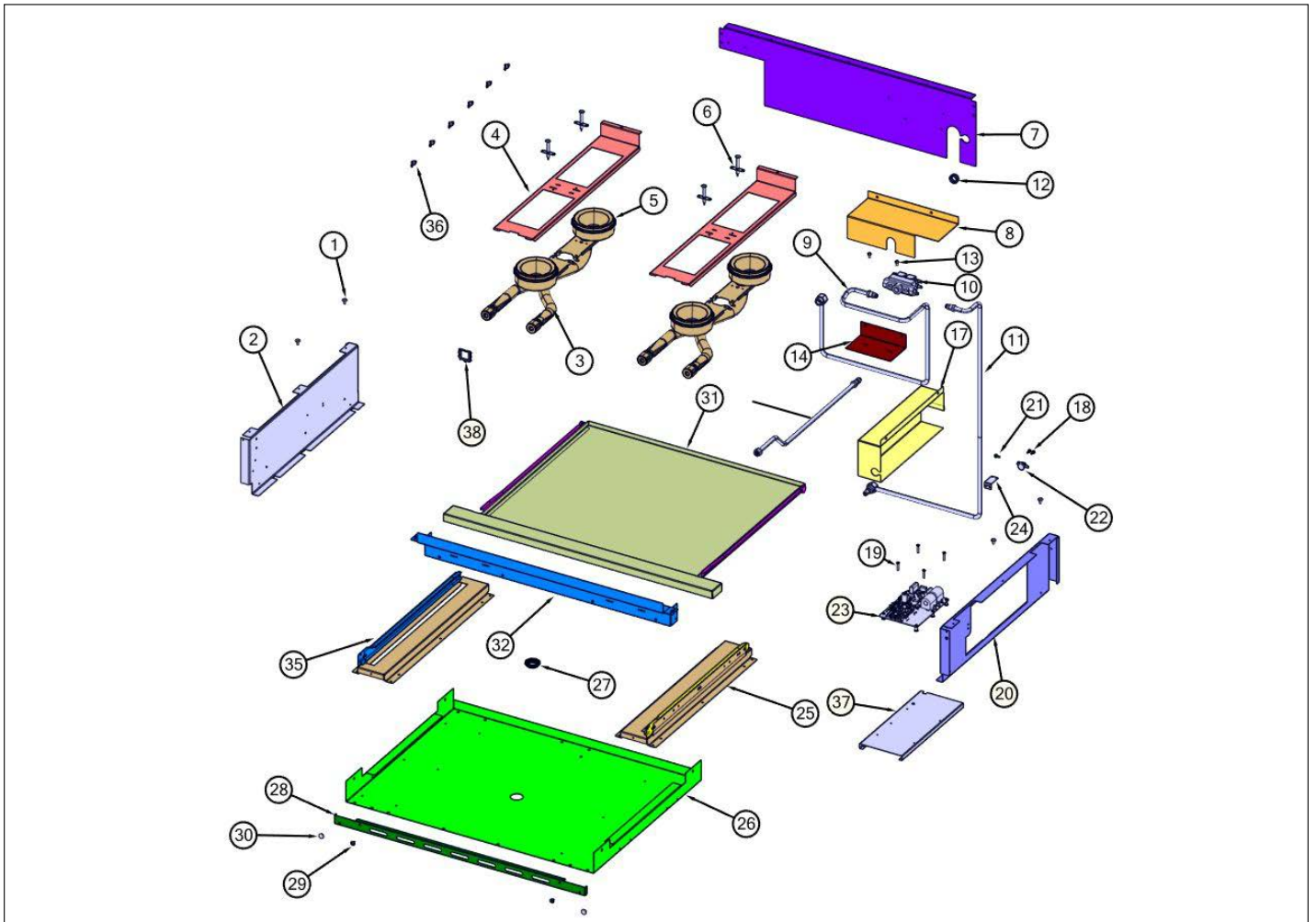
Lower Unit and Side Panel View





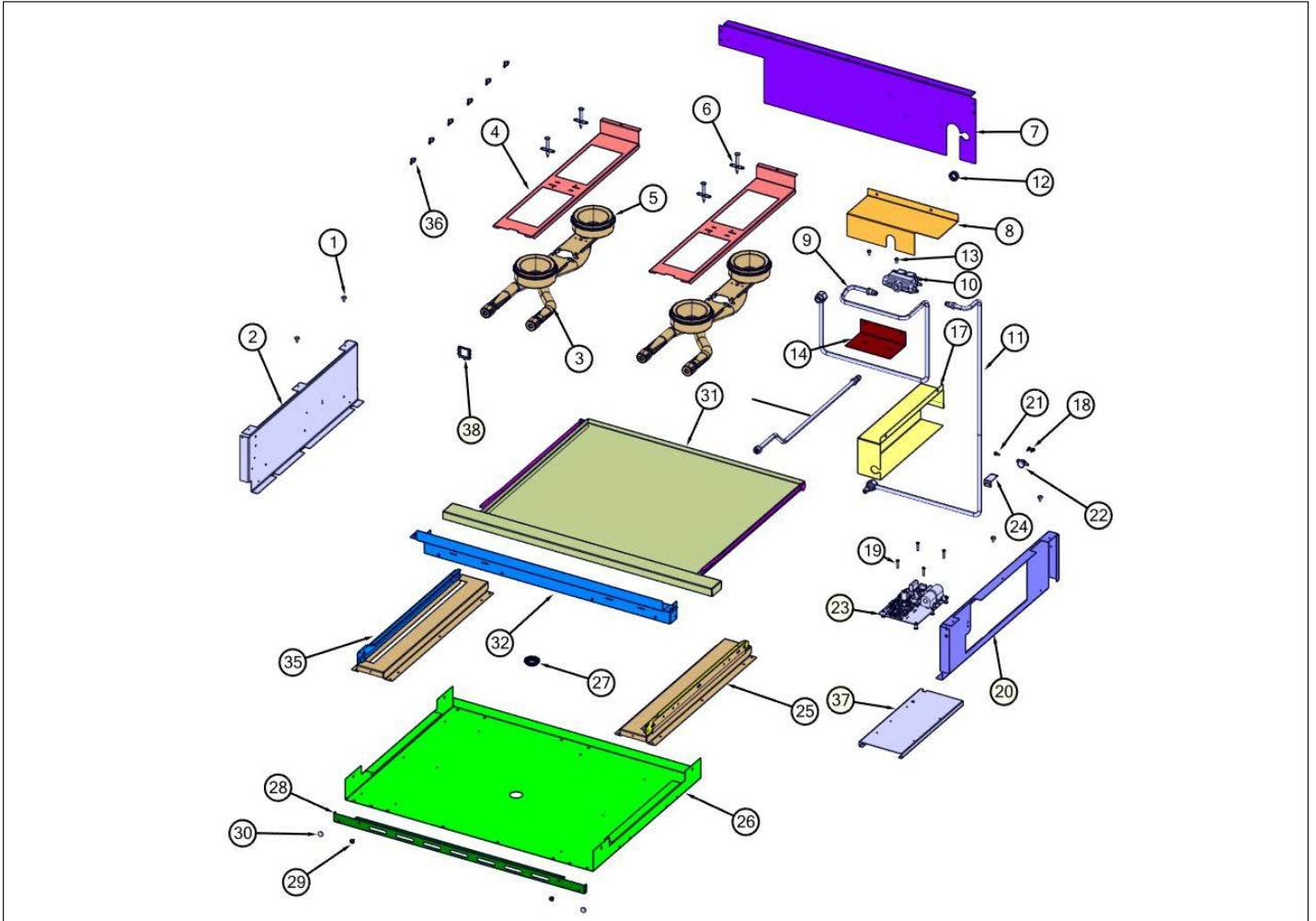
Item	Part No.	Name	Qty	Uom	NOTES
1	019123-000	PANEL, SIDE, LEFT	1	EA	
1	021310-002	PANEL, SIDE, LEFT BK	1	EA	
1	021310-005	PANEL, SIDE, LEFT GG	1	EA	
1	021310-006	PANEL, SIDE, LEFT WH	1	EA	
1	021310-008	PANEL, SIDE, LEFT BU	1	EA	
1	021310-013	PANEL, SIDE, LEFT CB	1	EA	
1	021310-024	PANEL, SIDE, LEFT AR	1	EA	
2	004482-000	INSULATION, PNL, SIDE, LH	1	EA	
3	PD020048	NO.10 X 1/2 TEK 410 SS SCREW	6	EA	
4	003056-000	BASE ASSEMBLY	1	EA	
5	A2004429	OVEN BOTTOM INSUL. BRACE (VGSC306)	2	EA	
6	004479-000	INSULATION, PNL, SIDE, RH	1	EA	
7	019124-000	PANEL, SIDE, RIGHT	1	EA	
7	021309-002	PANEL, SIDE, RIGHT BK	1	EA	
7	021309-005	PANEL, SIDE, RIGHT GG	1	EA	
7	021309-006	PANEL, SIDE, RIGHT WH	1	EA	
7	021309-008	PANEL, SIDE, RIGHT BU	1	EA	
7	021309-013	PANEL, SIDE, RIGHT CB	1	EA	
7	021309-024	PANEL, SIDE, RIGHT AR	1	EA	
8	PD040005	SNAP BUSHING - 7/8	1	EA	
9	044178-000	RANGE, LEG, ADJUSTABLE	4	EA	
10	038426-000	KICKPLATE,30"	1	EA	
10	038577-002	KICKPLATE, 30" BK	1	EA	
10	038577-005	KICKPLATE, 30" GG	1	EA	
10	038577-006	KICKPLATE, 30" WH	1	EA	
10	038577-008	KICKPLATE, 30" BU	1	EA	
10	038577-013	KICKPLATE, 30" CB	1	EA	
10	038577-024	KICKPLATE, 30" AR	1	EA	
11	006199-000	SPACER, BOT, 30", GSC	1	EA	
12	003801-000	SHOULDER SCREW, #10	2	EA	
13	014143-000	SCR 10-12 A SHLD TRP 1/2 S ZN BLUE	4	EA	

Burner Box Asm View





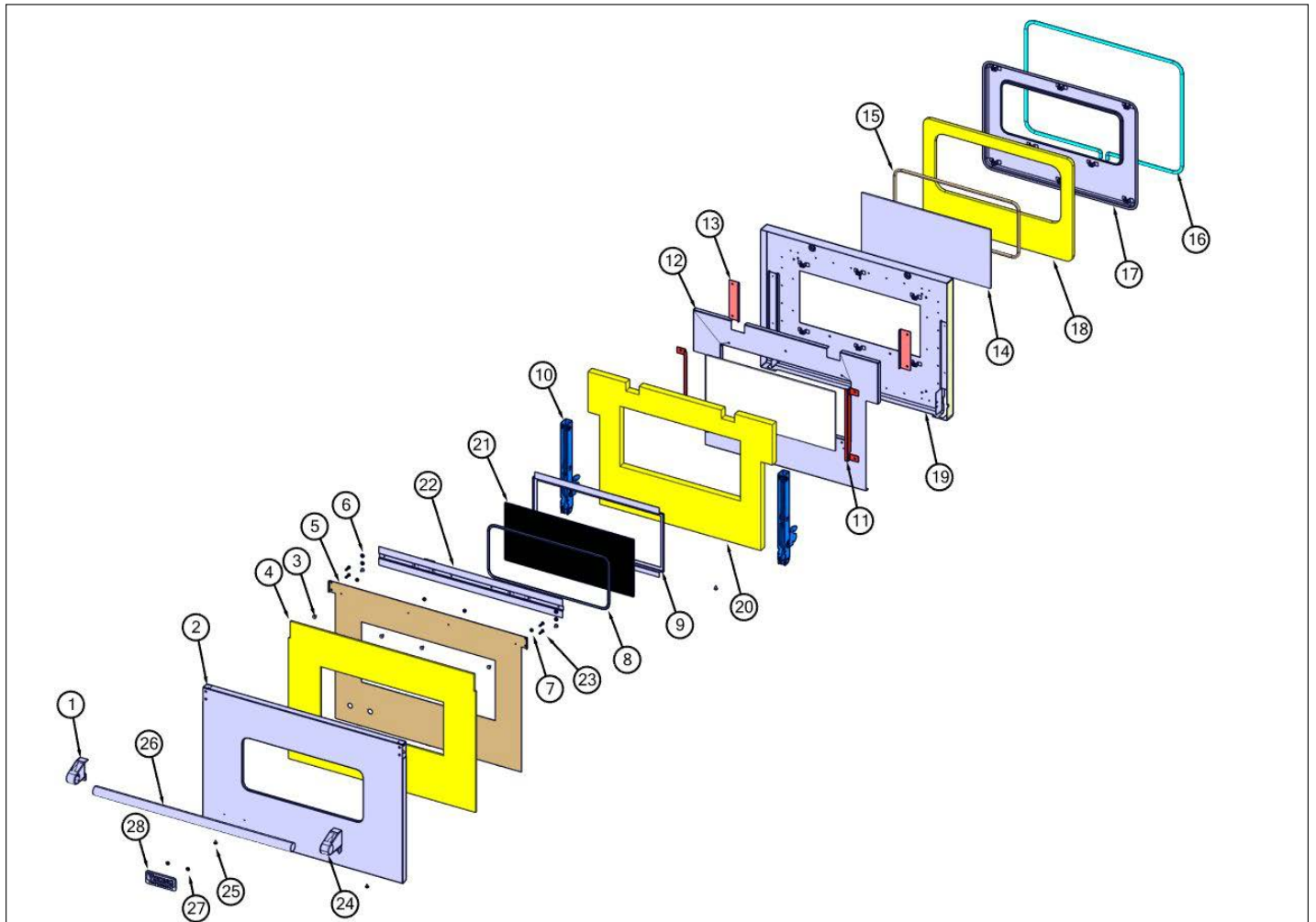
Item	Part No.	Name	Qty	Uom	NOTES
1	PD020033	SRW-#10-24X1/2"T(23)PH.WFR HD (NKL)	4	EA	
2	003481-000	BURNER BOX SIDE, LH	1	EA	
3	015486-000	BURNER, FRONT, ASM	2	EA	
4	015485-000	SUPPORT, BURNER, VGIC	2	EA	
5	015493-000	BURNER, REAR, ASM	2	EA	
6	PA020028	SPARK IGNITER	4	EA	
7	016976-000	SUPPORT, REAR VGIC530	1	EA	
8	016980-000	COVER, VALVE, 30"	1	EA	
9	015535-000	TUBING, BROIL ASM	1	EA	
10	009112-000	VALVE, SOL, DOUBLE	1	EA	
11	015533-000	TUBING, BAKE, RH ASM	1	EA	
12	PD040005	SNAP BUSHING - 7/8	2	EA	
13	PD020004	10X3/8PH.HD.TYPE 25 REPL PD040125	1	EA	
14	015515-000	BRACKET, VALVE	1	EA	
17	059893-000	COVER, DSI, ROBERTSHAW	1	EA	
18	PD020067	' #6 X 3/8" PAN PHIL. TEK *SS*	2	EA	
19	M0211021	SCREW-SM	5	EA	
20	059914-000	PANEL, SIDE, RH, VGIC	1	EA	
21	PD020010	10 X 3/8 GREEN GROUNDING SCREW	1	EA	
22	PJ030039	BI-METAL THERMOSTAT 275 DEGREES	1	EA	
23	043453-000	MODULE, DSI	1	EA	
24	A20014089	DISC BRACKET	1	EA	
25	061191-000	BRACKET, SL, RH, ASSY	2	EA	
NI	015501-000	BRACKET, SLIDE ASM RH	1	EA	Not available online / Call for pricing and availability
Not Shown	NOTE	(INCLUDES ITEMS 25 AND 16)		EA	
26	016973-000	TOP, CABINET VGIC530	1	EA	
27	PB070079	SILICONE EXTRUSION (DGSU)	1	EA	
28	016977-000	TRIM, FR, TOP 30" DCBZ	1	EA	





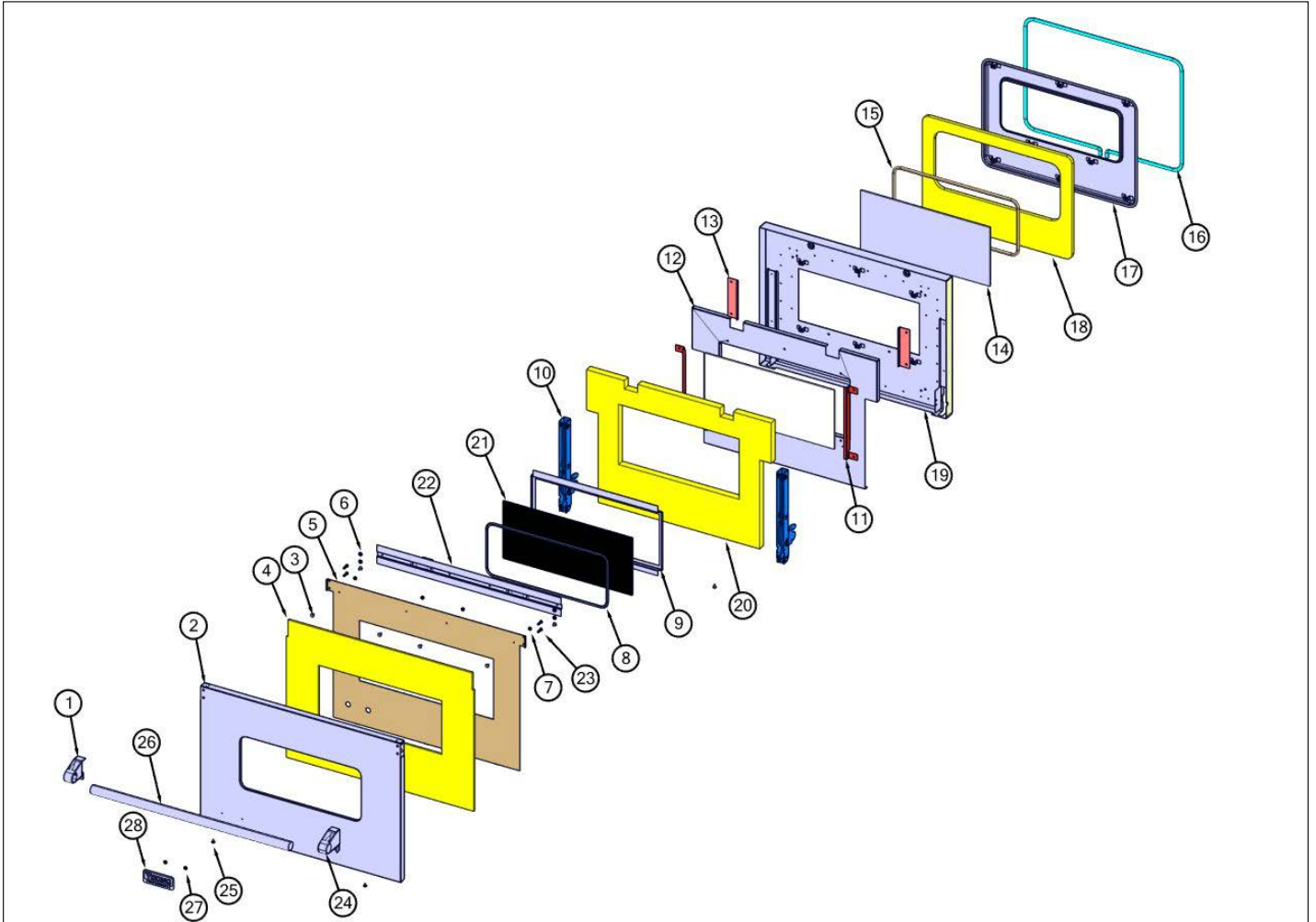
Item	Part No.	Name	Qty	Uom	NOTES
29	PD020063	SCREW-#8(A) X 3/8"PH WFR HD/BK OXID	2	EA	
30	PD040004	GROMMET BUMPER	4	EA	
31	061179-000	ASM. TRAY, DRIP, 30"	1	EA	
32	016975-000	SUPPORT, FRONT VGIC530	1	EA	
35	061181-000	BRACKET, SL, LH, ASSY	1	EA	
NI	015505-000	BRACKET, SLIDE ASM LH	1	EA	
Not Shown	NOTE	(INCLUDES ITEMS 34 AND 35)		EA	
NI	G4002752	DRIP TRAY GROUND WIRE (VDSC)	1	EA	
NI	PB020112	3/8 SS FLEX TUBING - 36" T6- 36	1	EA	
NI	PB040050	3/8CC MALE COMP. FITTING W/FERRULE	1	EA	
NI	059122-000	BRACKET, ANGL, AL	2	EA	
36	PD010016	BALL STUD FASTEN	6	EA	
37	059913-000	STANDOFF, DSI		EA	
38	045550-000	SADDLE, WIRE, EDGE	2	EA	
39	015529-000	TUBING, VALVE, RH OVEN	1	EA	

Door View





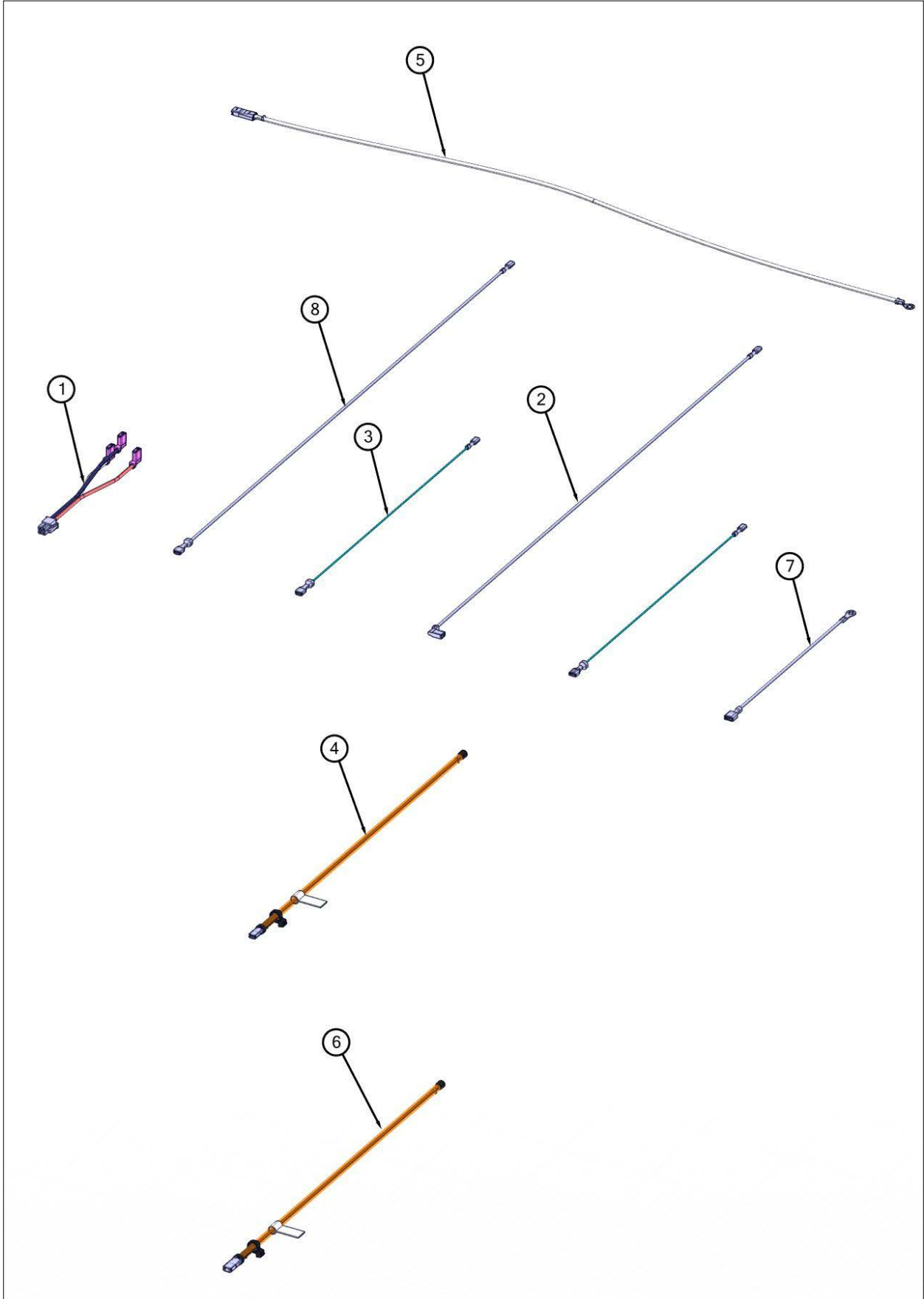
Item	Part No.	Name	Qty	Uom	NOTES
1	003011-000	DOOR HANDLE ENDCAP ASSY, LH (CHROME)	1	EA	
2	004686-CAN	DOOR,SKIN,ASSY,30",SS	1	EA	
2	007363-002	PANEL,DOOR,ASM,OTR,DECARB VGCC530 BK	1	EA	
2	007363-005	PANEL,DOOR,ASM,OTR,DECARB VGCC530 GG	1	EA	
2	007363-006	PANEL,DOOR,ASM,OTR,DECARB VGCC530 WH	1	EA	
2	007363-008	PANEL,DOOR,ASM,OTR,DECARB VGCC530 BU	1	EA	
2	007363-013	PANEL,DOOR,ASM,OTR,DECARB VGCC530 CB	1	EA	
2	023454-024	PANEL,DOOR,ASM,OTR,DECARB VGCC530 AR	1	EA	
3	PD020033	SRW-#10-24X1/2"T(23)PH.WFR HD (NKL)	2	EA	
6	004907-000	STEEL FINISHING PLUG, NICKEL PLTD 25/64" HOLE	4	EA	
7	030823-000	#10-32 PAN HEAD PHILLIPS MACHINE SCREW	4	EA	
10	002740-000	DOOR HINGE	2	EA	See TC-0121-SP Service Bulletin
11	007583-000	BRACKET, GLASS	2	EA	
11	004687-000	WDO BRACKET	2	EA	
12	004688-000	DOOR PANEL INSULATION LINER	1	EA	
13	A2002189	DOOR GLASS STANDOFF (VDSC)	2	EA	
14	PE060039	GLASS-HEAT TREATED (HB2) VDSC	2	EA	
15	000594-000	BLACK FIBERGLASS ROPE 3/8"	1	EA	
16	000042-000	30" DOOR GASKET	1	EA	
17	001142-402	PLUG, DOOR, ASM, PORCELAIN BK	1	EA	
18	002560-000	DOOR PLUG INSULATION	1	EA	
19	004691-000	DOOR LINER ASSY		EA	





Item	Part No.	Name	Qty	Uom	NOTES
Comments for Part Num. 004691-000					
profixappliances@gmail.com on Dec 29, 2017					
004691-000 IS SPECKLED FINISH, FOR ALL BLACK FINISH ORDER 004691-402.					
20	005475-000	DOOR INSULATION	1	EA	
24	003012-000	DOOR HANDLE ENDCAP ASSY, RH (CHROME)	1	EA	
25	PD020073	SRW #10 X 24 X 3/8 WAFER HD TYPE23	2	EA	
26	002728-000	DOOR HANDLE - SS, 1.25" 29.5	1	EA	
27	PD030006	CAPPED WASHER PAL NUT	2	EA	
28	060335-000	LOGO, CANADA, BRIGADE, 4.5"	1	EA	

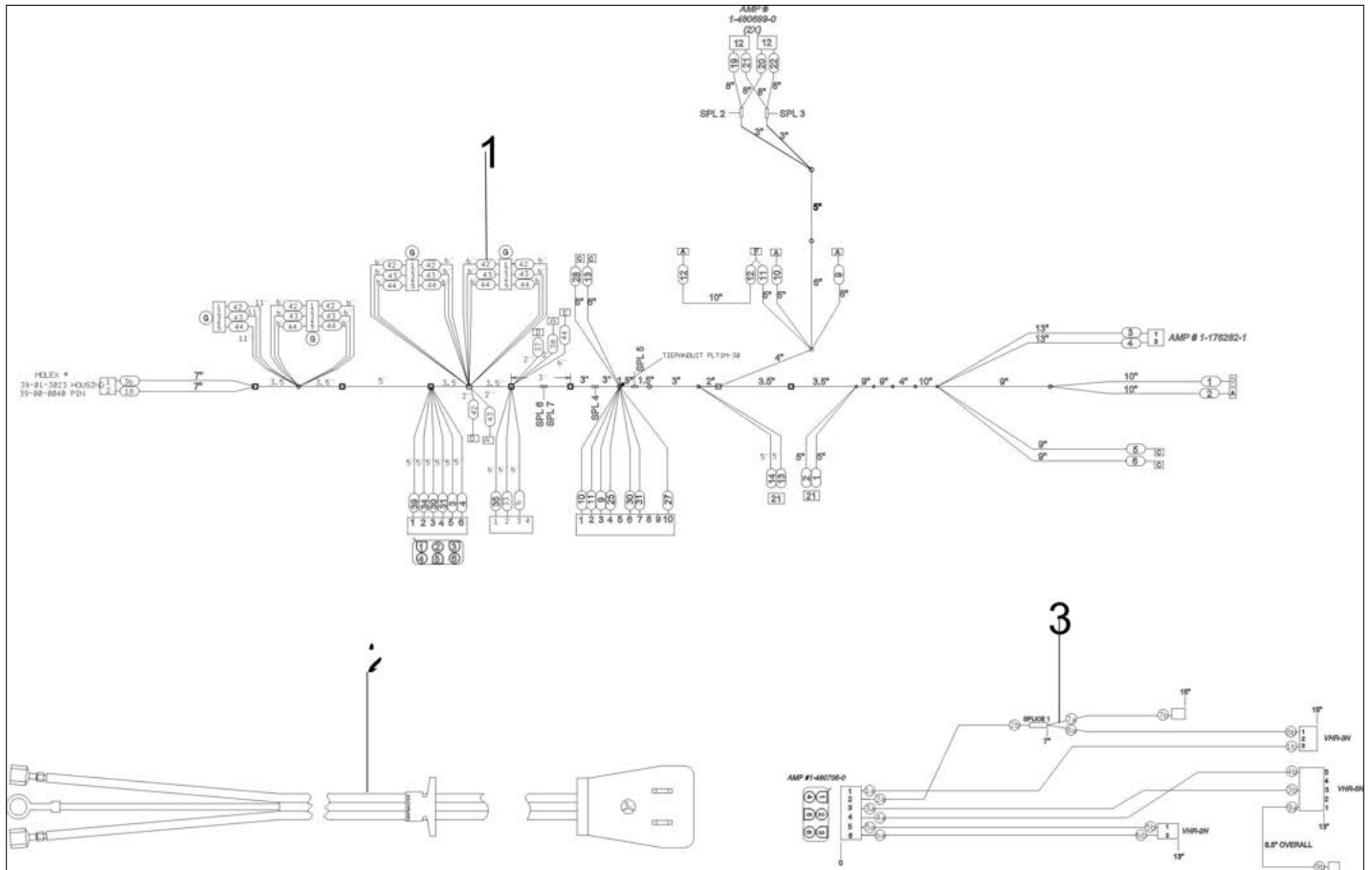
Wiring View 1





Item	Part No.	Name	Qty	Uom	NOTES
1	023040-000	HARNESS, CNVN, SWITCH, ASM	1	EA	
2	006766-000	IRIS IGNITOR WIRE, BACK BURNER	1	EA	
3	053582-000	WIRE, IRIS, IGNITOR, FRONT	2	EA	
4	059957-000	HARN, VGIC, BROIL ELEC	1	EA	
5	058704-000	HARN, VGIC, GROUND	1	EA	
6	059958-000	HARN, VGIC, BAKE ELEC	1	EA	
7	G4000936	GROUND WIRE	1	EA	
8	053583-000	WIRE, IRIS, IGNITOR, REAR	1	EA	

Wiring View 2





Item	Part No.	Name	Qty	Uom	NOTES
1	059955-000	HARN, MAIN, VGIC5304B	1	EA	
2	023750-000	CORD, SUPPLY	1	EA	
3	036193-000	HARNESS, CONTROL, BK/BR	1	EA	
NI	007378-000	LIGHT SWITCH HARNESS	1	EA	



Appendix A:Pages Index

Burner Box Asm View	6
Cavity View	3
Control View	1
Door View	7
Lower Unit and Side Panel View	5
Rear View	4
Surface Cooking View	2
Wiring View 1	8
Wiring View 2	9



Appendix B:Parts Index

000042-000	7	007583-000	7
000594-000	7	008416-000	1
001142-402	7	009112-000	6
002560-000	7	013213-000	1
002728-000	7	013386-000	1
002740-000	7	013580-402	3
003011-000	7	014143-000	5
003012-000	7	015485-000	6
003056-000	5	015486-000	6
003481-000	6	015493-000	6
003719-000	1	015496-000	2
003801-000	5	015497-000	2
004479-000	5	015501-000	6
004482-000	5	015505-000	6
004626-000	3	015515-000	6
004686-CAN	7	015529-000	6
004687-000	7	015533-000	6
004688-000	7	015535-000	6
004691-000	7	016973-000	6
004907-000	7	016975-000	6
005047-000	3	016976-000	6
005102-000	3	016977-000	6
005269-000	1	016978-000	1
005373-000	3	016980-000	6
005475-000	7	019123-000	5
005529-000	3	019124-000	5
005536-000	3	019160-000	4
006192-000	3	021199-000	3
006199-000	5	021225-402	3
006355-000	1	021309-002	5
006766-000	8	021309-005	5
007147-000	1	021309-006	5
007278-000	3	021309-008	5
007363-002	7	021309-013	5
007363-005	7	021309-024	5
007363-006	7	021310-002	5
007363-008	7	021310-005	5
007363-013	7	021310-006	5
007378-000	9	021310-008	5
007484-000	4	021310-013	5
		021310-024	5



023005-000	3	059913-000	6
023040-000	8	059914-000	6
023090-000	3	059955-000	9
023263-000	4	059957-000	8
023405-000	1	059958-000	8
023454-024	7	060335-000	7
023501-000	1	061179-000	6
023750-000	9	061181-000	6
030823-000	7	061191-000	6
031251-2255	1	065467-000	3
031679-000	3	066203-000	3
031961-000	4	066225-402	3
032123-000	4	066982-000	2
035795-000	1	068653-601	3
035881-000	1	072065-000	2
035891-000	1	A20014089	6
036193-000	9	A2002189	7
038426-000	5	A2002595	3
038577-002	5	A2004429	5
038577-005	5	A2008467	3
038577-006	5	B2001448	3
038577-008	5	B2005589	3
038577-013	5	E9101115BK	2
038577-024	5	E91012614	3
040736-000	3	E9104416BK	2
041445-000	4	G3001876	3
043453-000	6	G4000936	8
044096-000	3	G4002752	6
044178-000	5	M0211021	6
044246-000	3	NTOE	3
045550-000	6	PA020028	6
048028-000	3	PA020058	1
049718-402	3	PA030002BK	2
050172-000	1	PA060037	2
053582-000	8	PA070003	1
053583-000	8	PB010304PVD	1
056013-000	3	PB020112	6
058554-000	3	PB040027	3
058704-000	8	PB040034	1
059122-000	6	PB040035	3
059893-000	6	PB040036	1



PB040040	3
PB040050	6
PB040071	3
PB040170	3
PB040171	3
PB060030	3
PB070079	6
PD010012	1
PD010016	6
PD010017	2
PD020004	6
PD020010	4, 6
PD020033	2, 6, 7
PD020046	1
PD020048	5
PD020061	3
PD020063	6
PD020067	6
PD020073	7
PD020232	3
PD020269	1
PD030006	7
PD030012	2
PD030018	3
PD030118	3
PD040004	6
PD040005	4, 5, 6
PE050023	1
PE050024	1
PE050057	3
PE050206	3
PE060039	7
PJ030039	6