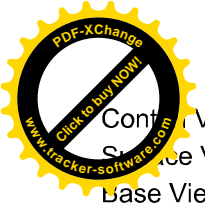
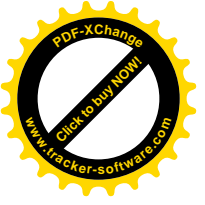


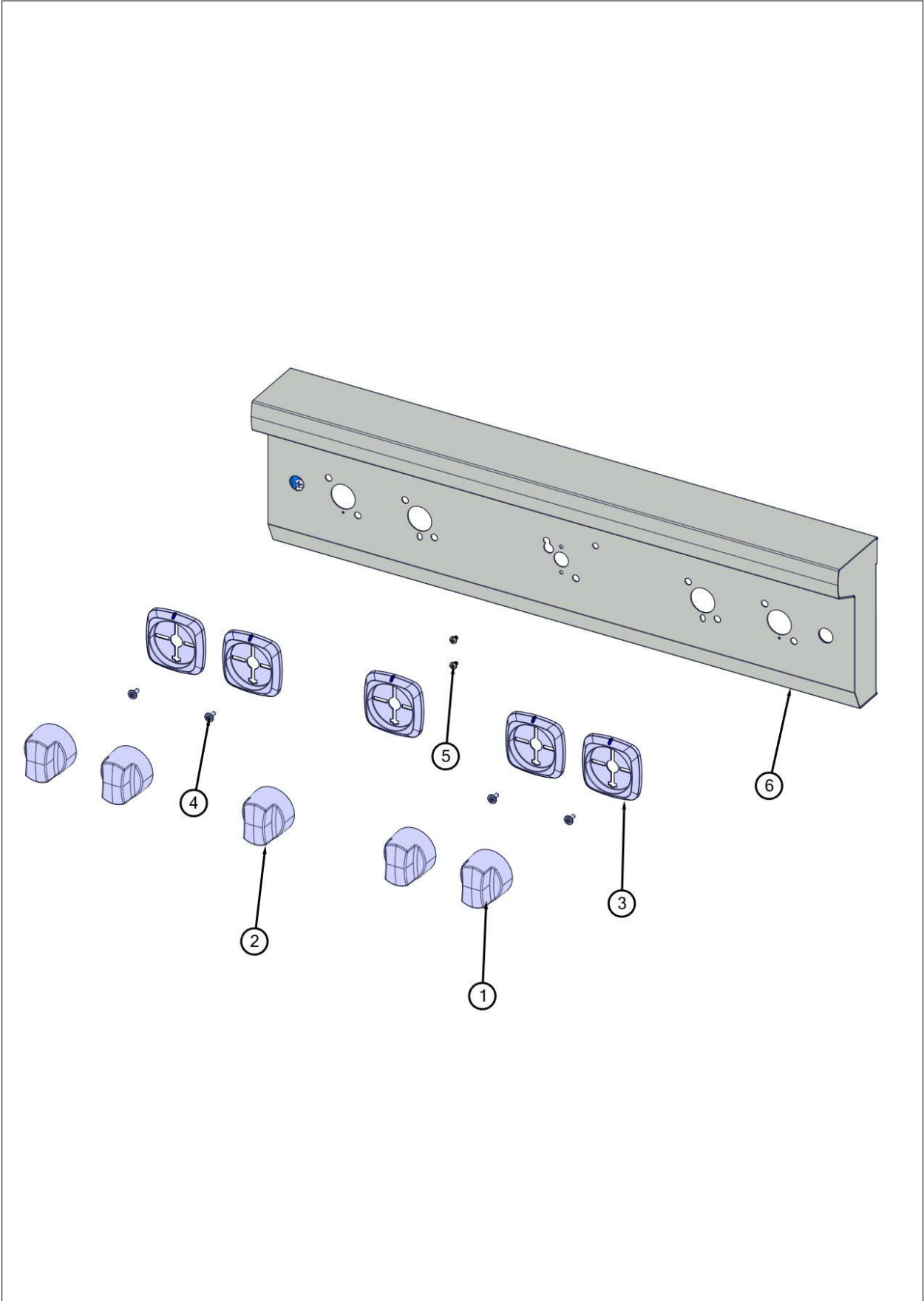
VGR5304BSS

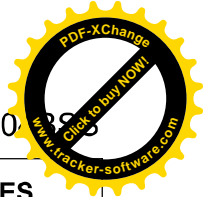


Content View	3
Surface View	4
Base View	5
Decor View	4
Gas Asm View	5
Door View	6
Electrical Asm View	7
VGR5304BSS Rack	8
Appendix A:Pages Index	A
Appendix B:Parts Index	B



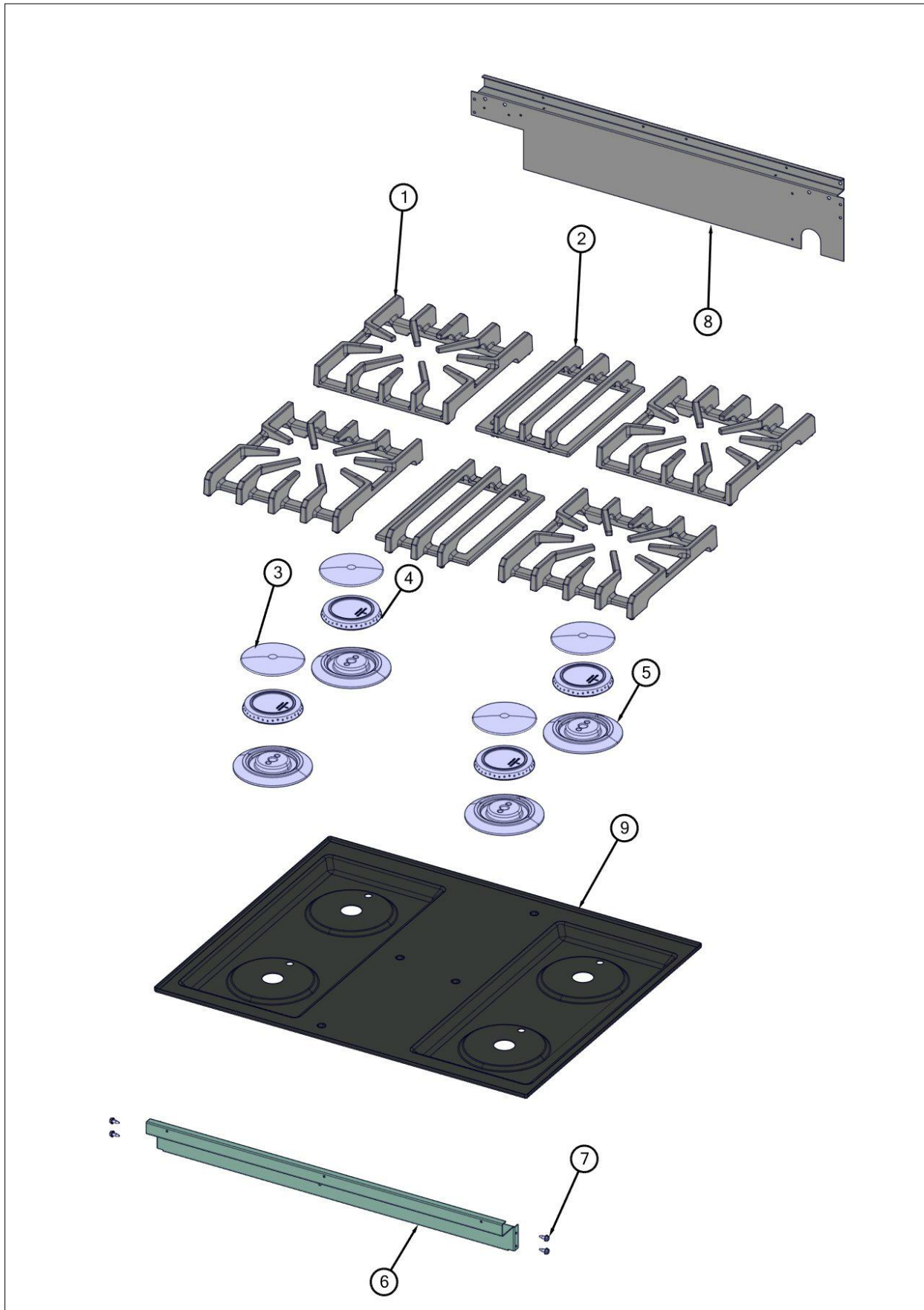
Control View





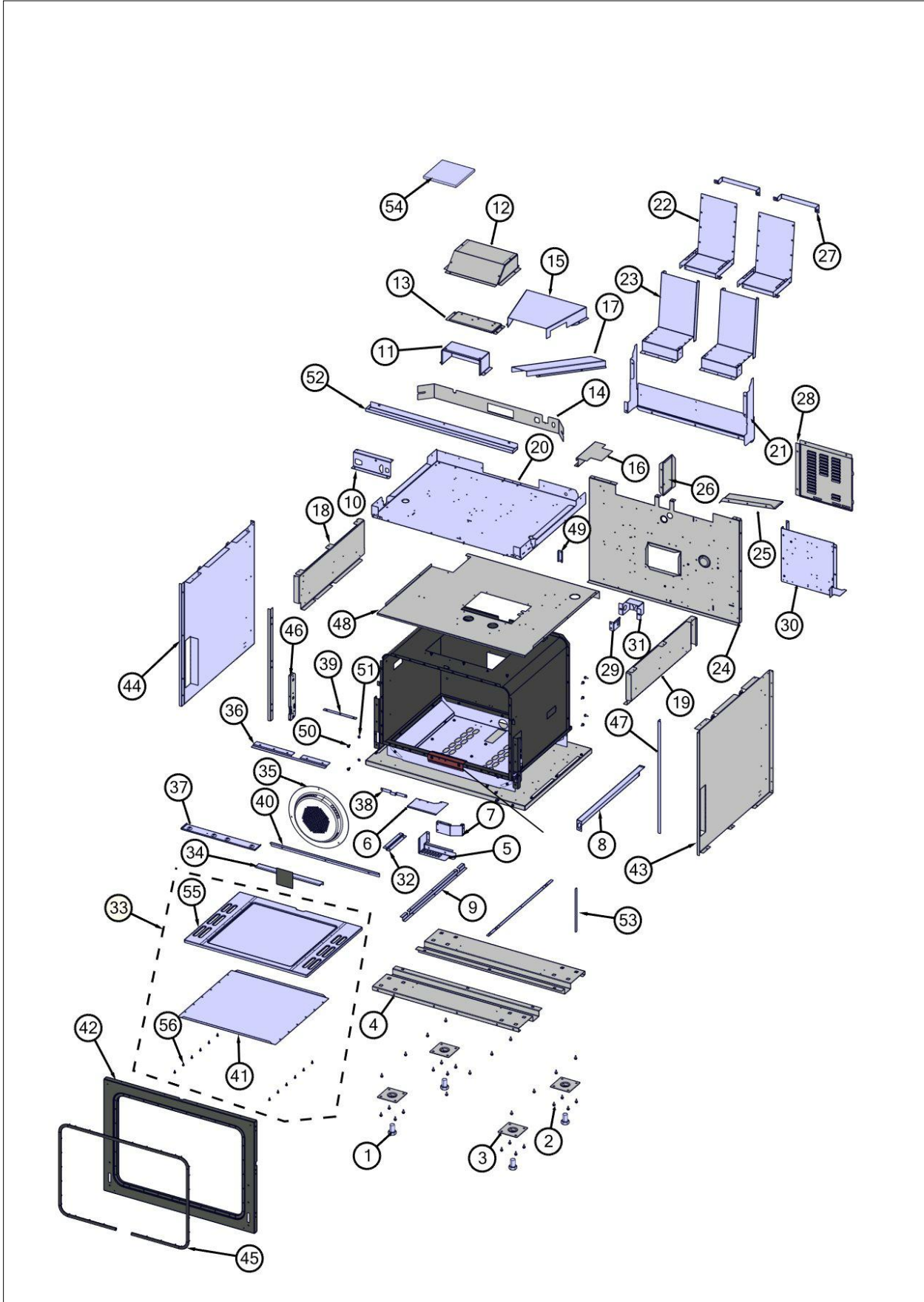
Item	Part No.	Name	Qty	Uom	NOTES
1	035881-000	KNOB, BNR, TOP PRO CR3	4	EA	
Not Shown	NOTE	(BEFORE 02/08/17)		EA	
1	063759-2809	KNOB, BNR, TOP, PRO ASSY BLK CR (SEE 059023-000)	4	EA	
Not Shown	NOTE	(ON OR AFTER 02/08/17)		EA	
2	035891-000	KNOB,OVN,TSTAT, PRO VGCC CR3	1	EA	
Not Shown	NOTE	(BEFORE 02/08/17)		EA	
2	059004-2071	KNOB, OVEN, TSTAT PRO VGR ASSY	1	EA	
Not Shown	NOTE	(ON OR AFTER 02/08/17)		EA	
3	050172-000	BEZEL, KNOB	5	EA	
Not Shown	NOTE	(BEFORE 02/08/17)		EA	
3	063891-000	BZL, KNOB, VGR	5	EA	
Not Shown	NOTE	(ON OR AFTER 02/08/17)		EA	
4	PD020046	' #8 X 1/2 SCREWS	4	EA	
5	PD020269	#8 PAN HEAD SCREW	2	EA	
6	056185-2068	PANEL, CONTROL, VGCC53014B, W/GRAPHICS	1	EA	

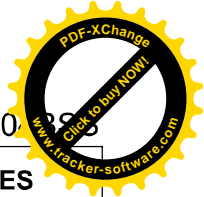
Face View



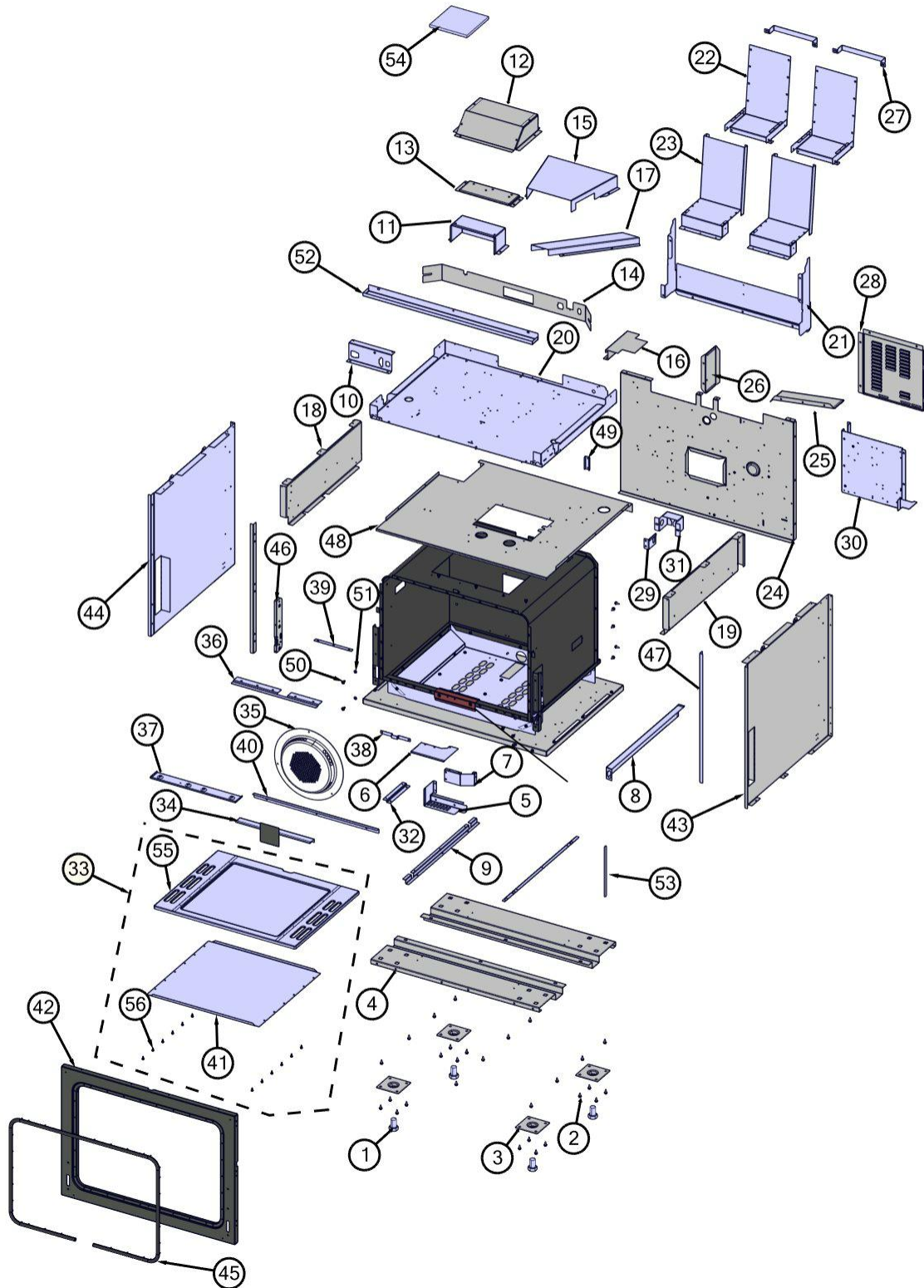


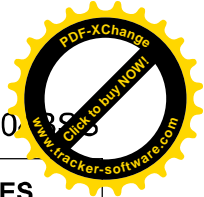
Item	Part No.	Name	Qty	Uom	NOTES
1	049420-000	GRATE, BURNER, ASM	4	EA	
NI	049416-000	BUMPER, GRATE	16	EA	
2	049426-000	GRATE, CENTER, ASM	2	EA	
NI	049416-000	BUMPER, GRATE	8	EA	
3	066958-000	CAP, BURNER, D, BLK	4	EA	
4	018200-000	ADJUSTED SEALED BURNER HEAD	4	EA	
5	003322-041	SEALED BURNER BASE, PAINTED FINISH- GRAY	4	EA	
NI	009197-000	#6-32 X 5/8 18-8 SS NC SOC CAP	8	EA	
6	002925-000	FRONT SUPPORT, BURNER BOX	4	EA	
7	003860-000	10-18 x .500 FASTNR,SCR,HXWH,STL,ZPLT	4	EA	
8	006035-000	SUPPORT, BACK	1	EA	
9	E9107413BK	MAIN TOP 30" *BK*	1	EA	



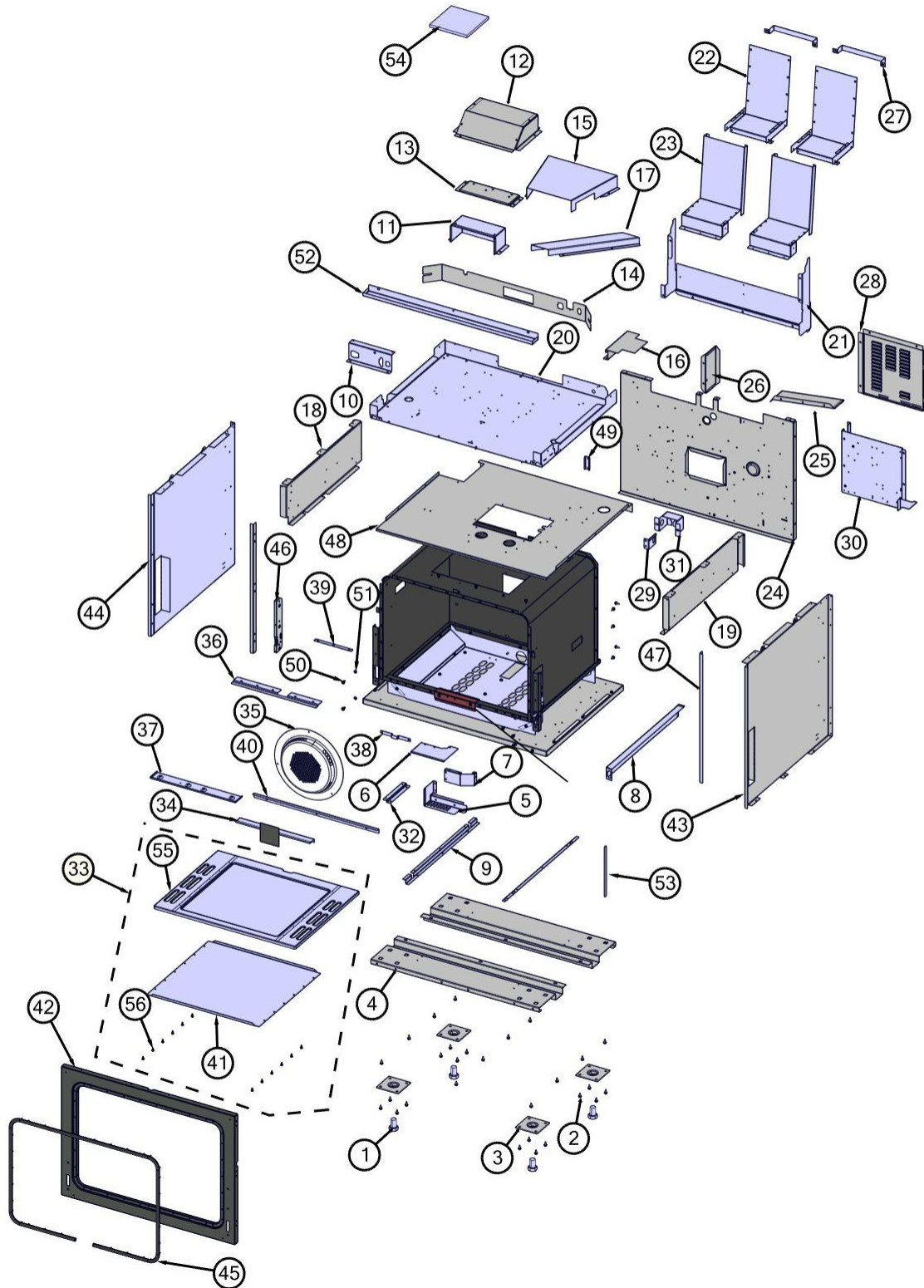


Item	Part No.	Name	Qty	Uom	NOTES
1	PD010022	HEX HD. BOLT - 3/4-10 X 1-1/4"	4	EA	
2	003860-000	10-18 x .500 FASTNR,SCR,HXWH,STL,ZPLT	46	EA	
3	PC030007	LEG PLATE - 3/4" THREADED HOLE	4	EA	
4	056942-000	BRACKET, LEG, OFFSET	2	EA	
5	058363-000	SHIELD, SWITCH, DISCONNECT	1	EA	
6	058399-000	SHIELD, DISCONNECT, TOP	1	EA	
7	058397-000	SHIELD, DISCONNECT, REAR	1	EA	
8	058346-000	BRACKET, SWITCH, DISCONNECT	1	EA	
9	A2004429	OVEN BOTTOM INSUL. BRACE (VGSC306)	2	EA	
10	058349-000	BRACKET, MOUNT, PANEL	1	EA	
11	058347-000	SHIELD, HEAT, HARNESS, BTM	1	EA	
12	058901-000	COVER, FAN, VGR548	1	EA	
13	006956-000	BRACKET, BLO, MTG	1	EA	
14	057689-000	DIVIDER, AIR	1	EA	
15	005464-000	DUCT, VENT	1	EA	
16	010251-000	COVER, SOL	1	EA	
17	006950-000	DUCT, VENT	1	EA	
18	049578-000	PNL, SIDE, RANGE, LEFT TOP	1	EA	
19	049588-000	PNL, SIDE, RANGE, RIGHT TOP	1	EA	
20	057765-000	RETAINER, INSULATION, UPPER, 30"	1	EA	
21	057863-000	COVER, BACK, TOP, VGR548, LH	1	EA	
22	005945-000	VENT, BOTTOM	2	EA	
23	005944-000	VENT, TOP	2	EA	
24	049500-000	PANEL, INSL, BACK, 30"	1	EA	
25	058355-000	SHIELD, DIVERTER, WATER, VGR5	1	EA	
26	058839-000	PANEL, DIVIDER, WIRE	1	EA	
27	041808-000	STRAP, SPRT	2	EA	
28	059056-000	PANEL, ACCESS, DSI	1	EA	
29	033668-000	BRACKET, DISCONNECT	1	EA	



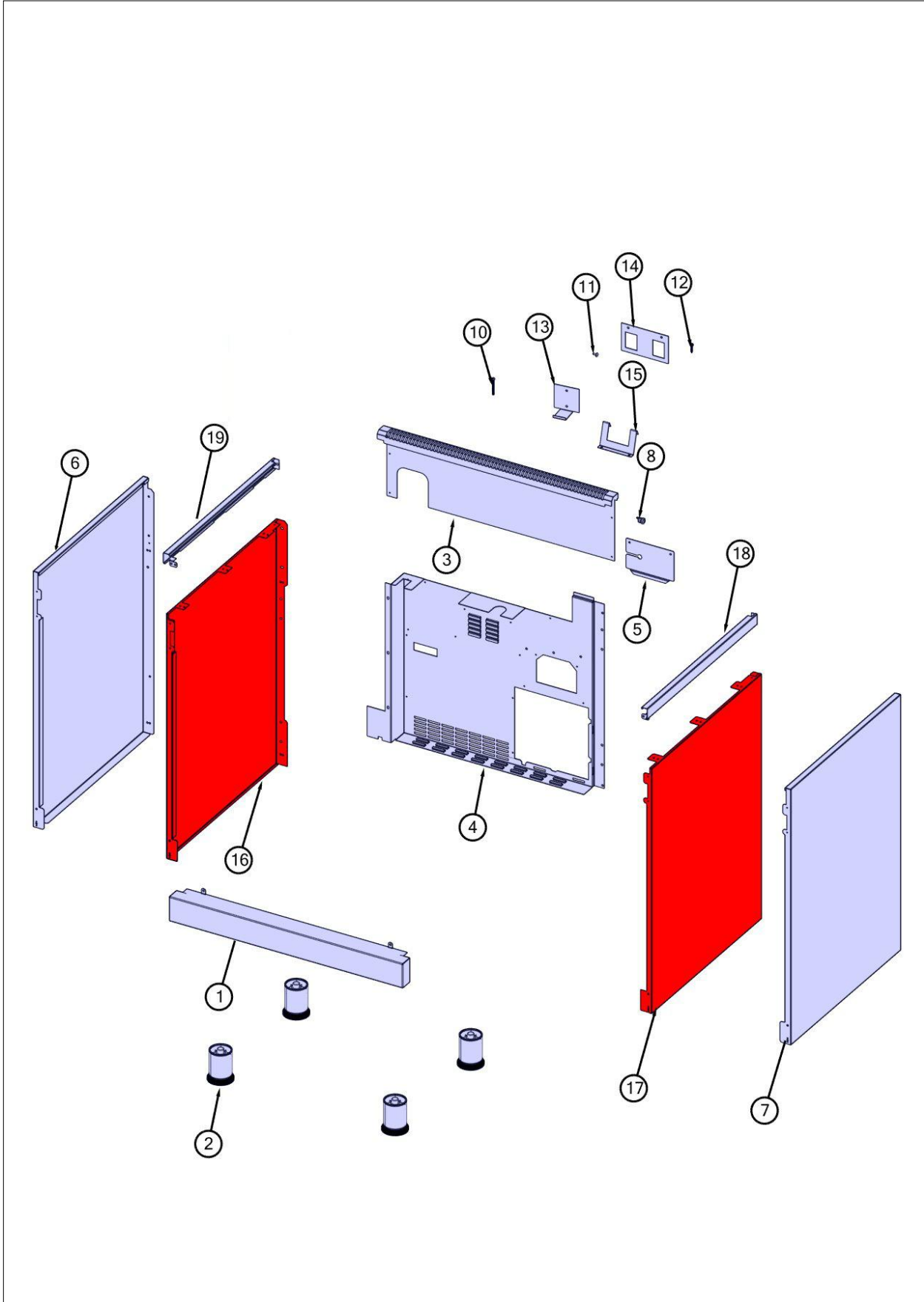


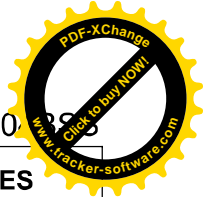
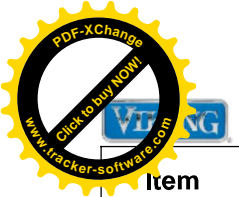
Item	Part No.	Name	Qty	Uom	NOTES
30	059024-000	PNL, TRAY, MOUNT, ELECTRONICS	1	EA	
31	040736-000	BRKT, ORF	1	EA	
32	055025-000	BRACKET, HOLD-DOWN, BOX, FIRE, 18"	2	EA	
33	066203-000	ASM, BOTTOM, CAVITY, OVEN, GAS, 30"	1	EA	
34	031445-402	BRACE, OVEN, BOTTOM, BACK W/BK PORC	1	EA	
35	021225-402	COVER, CNVN, ASM, BK PORC	1	EA	
36	020412-000	BRACKET, SPRT, REAR, I/R BROILER	1	EA	
37	020409-000	BRACKET, SPRT, FR, I/R BROILER	1	EA	
38	A2004428	REAR BOTTOM BRCKT (VGSC306)	1	EA	
39	045034-000	BRACKET, WASHER	1	EA	
40	050267-000	BRACKET, SUPPORT, BOTTOM, OVEN, 30"/36"	1	EA	
41	A2004439	OVEN BOTTOM SHIELD (VGSC306)	1	EA	
42	051809-402	FRAME, FRONT, W/A, 30"-BLACK	1	EA	
43	064189-000	PANEL, INSL, VGR548, RH	1	EA	
44	064191-000	PANEL, INSL, VGR548, LH	1	EA	
45	044793-000	GASKET, LINER, ASM, AG 30"	1	EA	
46	045060-000	RECEIVER, HINGE, SLOW-CLOSE, UNDAMPENED	2	EA	
47	005536-000	TRIM	2	EA	
48	058382-000	PANEL, BOTTOM, BOX, BURNER, VGR530	1	EA	
49	060464-000	BRACKET, CHANNEL, BACKGUARD	1	EA	
50	046651-000	SCREW, TRILOBE, 10-32, TRUSS, PH, BLACK	4	EA	
51	052632-000	WASHER, FLAT, PTFE, NO. 10	4	EA	
52	038943-000	GUTTER, SPILL, 30"	1	EA	
53	049609-000	GASKET, FOAM	1ft	EA	
54	PB070199	E MODEL POLY FILM 6X6	1	EA	



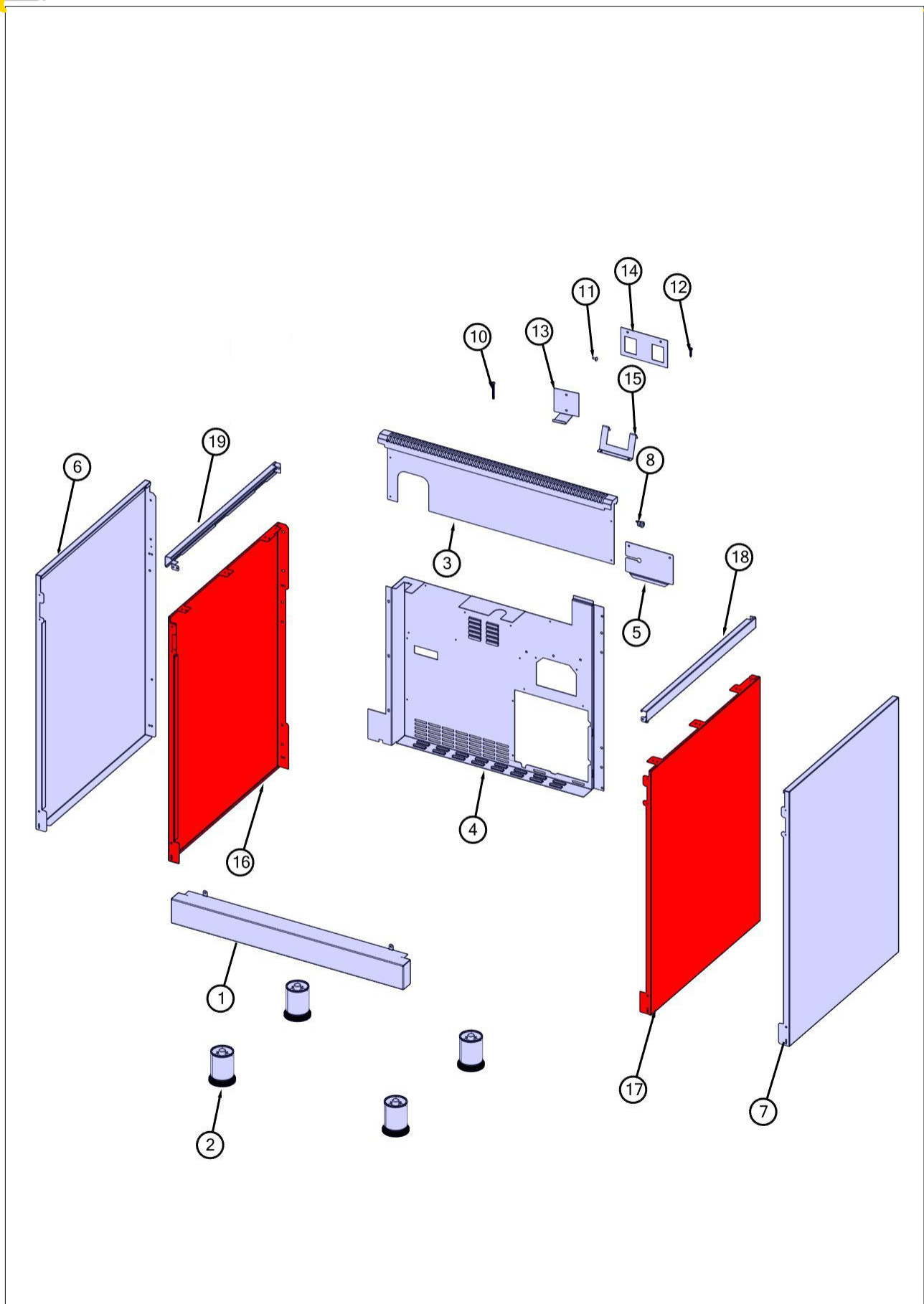


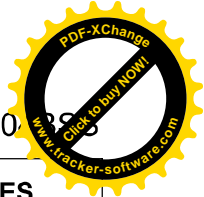
Item	Part No.	Name	Qty	Uom	NOTES
55	G9104438BK	OVEN, BOTTOM, ASM,PORCELAIN, BK	1	EA	
Not Shown	NOTE	(MUST ORDER ITEM 33)		EA	
56	008026-000	#6-20 HEX WASHER SS SCREW	12	EA	
57	059489-000	CLIP, GSKT	1	EA	
NI	PD020033	SRW-#10-24X1/2"(23)PH.WFR HD (NKL)	1	EA	
Not Shown	NOTE	(TO SECURE GASKET CLIP TO UNIT)		EA	





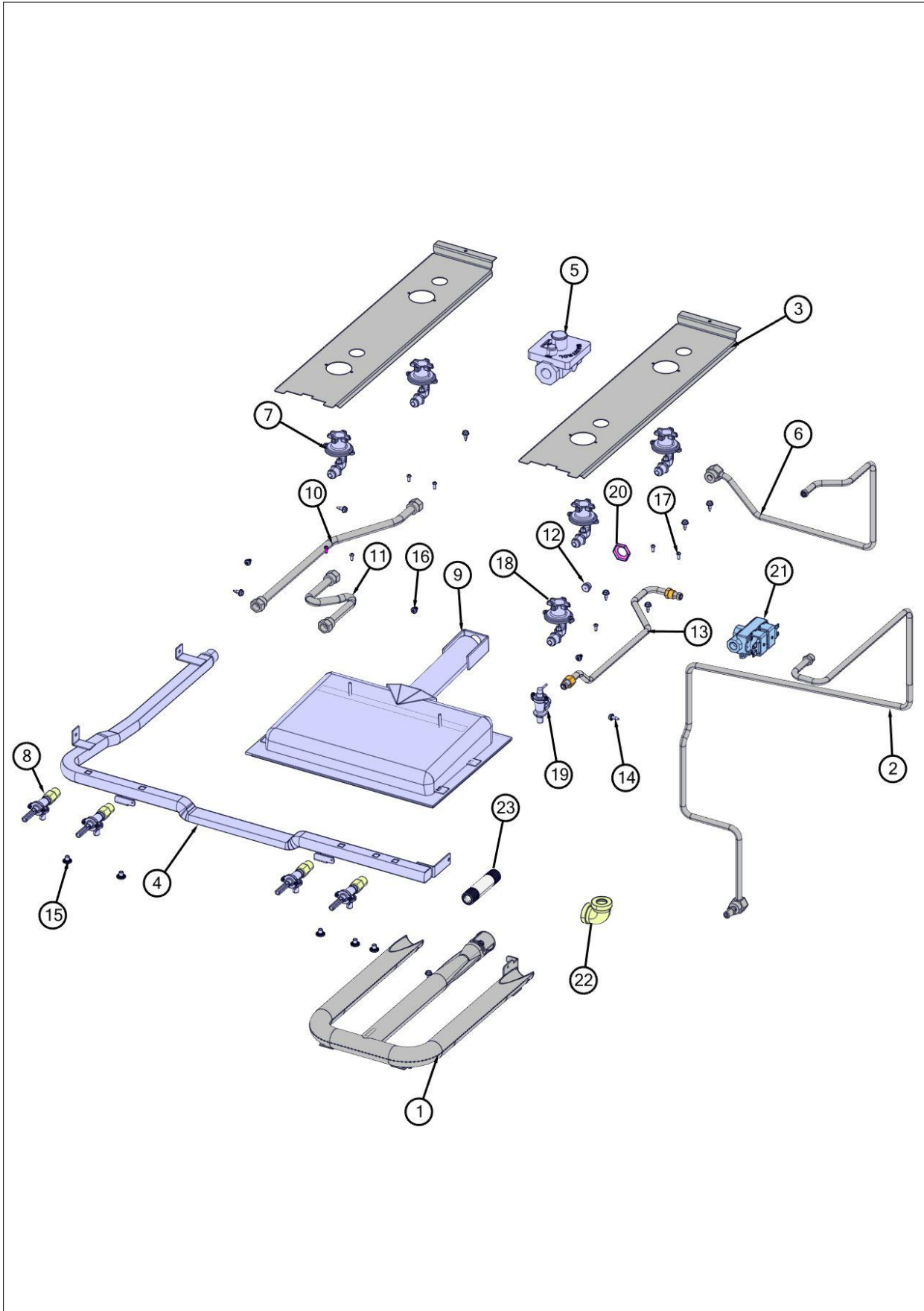
Item	Part No.	Name	Qty	Uom	NOTES
1	038426-000	KICKPLATE,30"	1	EA	
1	038577-002	KICKPLATE, 30" BK	1	EA	
1	038577-005	KICKPLATE, 30" GG	1	EA	
1	038577-006	KICKPLATE, 30" WH	1	EA	
1	038577-008	KICKPLATE, 30" BU	1	EA	
1	038577-013	KICKPLATE, 30" CB	1	EA	
1	038577-024	KICKPLATE, 30" AR	1	EA	
2	044178-000	RANGE, LEG, ADJUSTABLE	4	EA	
3	041445-000	TRIM, IS, ASSY, 30"	1	EA	
4	057905-000	CABINET BRACKET	1	EA	
5	043746-000	PNL, ACCESS, W/HEYCO	1	EA	
6	056872-000	PANEL, SIDE, LH	1	EA	
7	056873-000	PANEL, SIDE, RH	1	EA	
8	PE070069	STRAIGHT-THRU BUSHING	1	EA	
10	PD020112	10-24 X 2RD PH MS TOGGLE BOLT	2	EA	
11	PD020002	10 X 1/2 PH.TR.HD.SMS.	2	EA	
12	035784-000	FSTNR, SCR, HXWH, #10-12 X 1	2	EA	
13	A2002654	ANTI-TIP DEVICE	1	EA	
14	034927-000	BRACKET, ANTI-TIP	1	EA	
15	034928-000	BRACKET, HOOK, ANTI-TIP	1	EA	
16	062653-002	PANEL, SIDE, DECARB, LH BK	1	EA	
16	062653-005	PANEL, SIDE, DECARB, LH GG	1	EA	
16	062653-006	PANEL, SIDE, DECARB, LH WH	1	EA	
16	062653-008	PANEL, SIDE, DECARB, LH BU	1	EA	
16	062653-013	PANEL, SIDE, DECARB, LH CB	1	EA	
16	062653-024	PANEL, SIDE, DECARB, LH AR	1	EA	
17	062478-002	PANEL, SIDE, DECARB, RH BK	1	EA	
17	062478-005	PANEL, SIDE, DECARB, RH GG	1	EA	
17	062478-006	PANEL, SIDE, DECARB, RH WH	1	EA	
17	062478-008	PANEL, SIDE, DECARB, RH BU	1	EA	
17	062478-013	PANEL, SIDE, DECARB, RH CB	1	EA	
17	062478-024	PANEL, SIDE, DECARB, RH AR	1	EA	

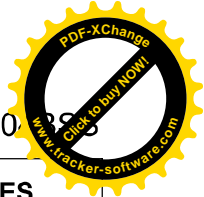




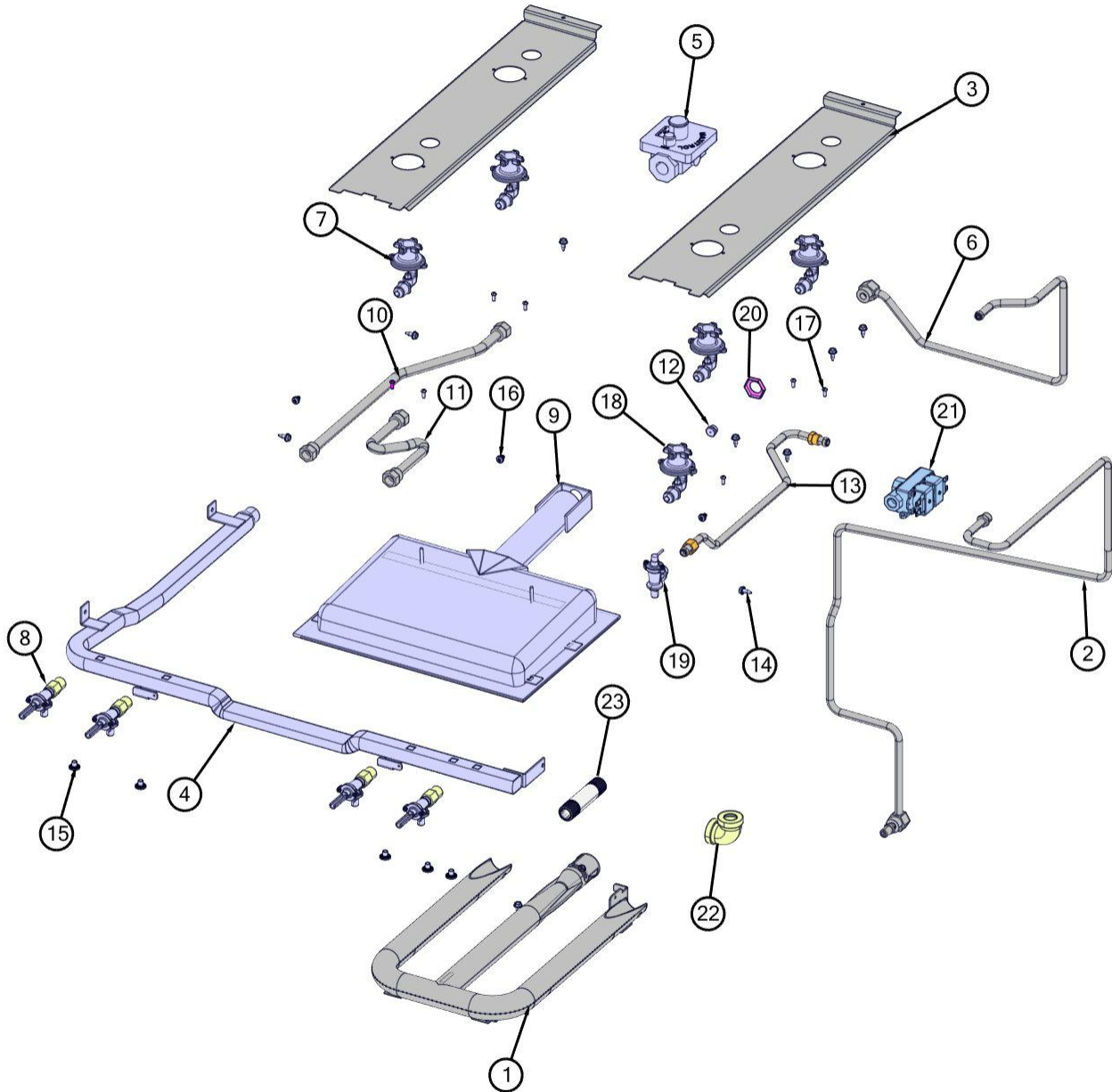
Item	Part No.	Name	Qty	Uom	NOTES
18	062475-000	TRIM, SIDE, RH	1	EA	
Not Shown	NOTE	(FOR USE WITH COLORED SIDE PANELS ONLY)		EA	
19	062476-000	TRIM, SIDE, LH	1	EA	
Not Shown	NOTE	(FOR USE WITH COLORED SIDE PANELS ONLY)		EA	

Asm View



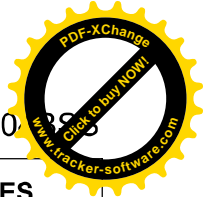


Item	Part No.	Name	Qty	Uom	NOTES
1	044096-000	BURNER, BAKE, ASM, 30"	1	EA	
1	044246-000	BURNER, BAKE, ASM, 30"- LP	1	EA	
2	058142-000	TUBING, MAIN, 48" OVEN ASSY, NAT	1	EA	
2	058157-000	TUBING, MAIN, 48" OVEN ASSY, LP	1	EA	
3	002923-000	BURNER MODULE SUPPORT	2	EA	
4	052759-000	MANIFOLD, GAS, ASM	1	EA	
5	PA070003	PRESSURE REGULATOR (NAT.)	1	EA	
5	013386-000	LP PRESSURE REGULATOR	1	EA	
6	058141-000	TUBING, VALVE TO BROIL ASSY	1	EA	
7	001394-042	15000 BTU NAT JETHOLDER	1	EA	
7	001394-046	12.5 K BTU LP JETHOLDER	1	EA	
8	006313-000	VALVE, BRS, SEALED TOP	4	EA	
9	G3001876	IR BURNER ASSY (VGSC/RC) N/S	1	EA	
10	PB020193	16" FLEX TUBING W/CONNECTORS	2	EA	
11	PB020192	10" FLEX TUBING W/CONNECTORS	2	EA	
12	PB040040	ORIFICE-IR BURNER (VGSC)	1	EA	
12	PB040027	IR BUR.SPUD ORF. - #56 LP	1	EA	
13	058481-000	TUBE, VALVE TO SOLENOID, VGR530	1	EA	
14	003860-000	10-18 x .500 FASTNR,SCR,HXWH,STL,ZPLT	10	EA	
15	PD010012	VALVE BOLT 1/4-20 UNC-2B 5/16" M.S.	5	EA	
16	037304-000	FASTENER, PNH, TORX, AB, PSVD, WAX	3	EA	
17	PD020076	6-32 X 3/8" PHILL PAN MS	4	EA	
18	001394-041	18500 BTU NAT JETHOLDER	3	EA	
18	001394-044	16.6 K BTU LP JETHOLDER	3	EA	
19	007147-000	SHUT OFF VALVE	1	EA	
20	PD030018	PALNUT - 3/4-16	1	EA	
21	009112-000	VALVE, SOL, DOUBLE	1	EA	

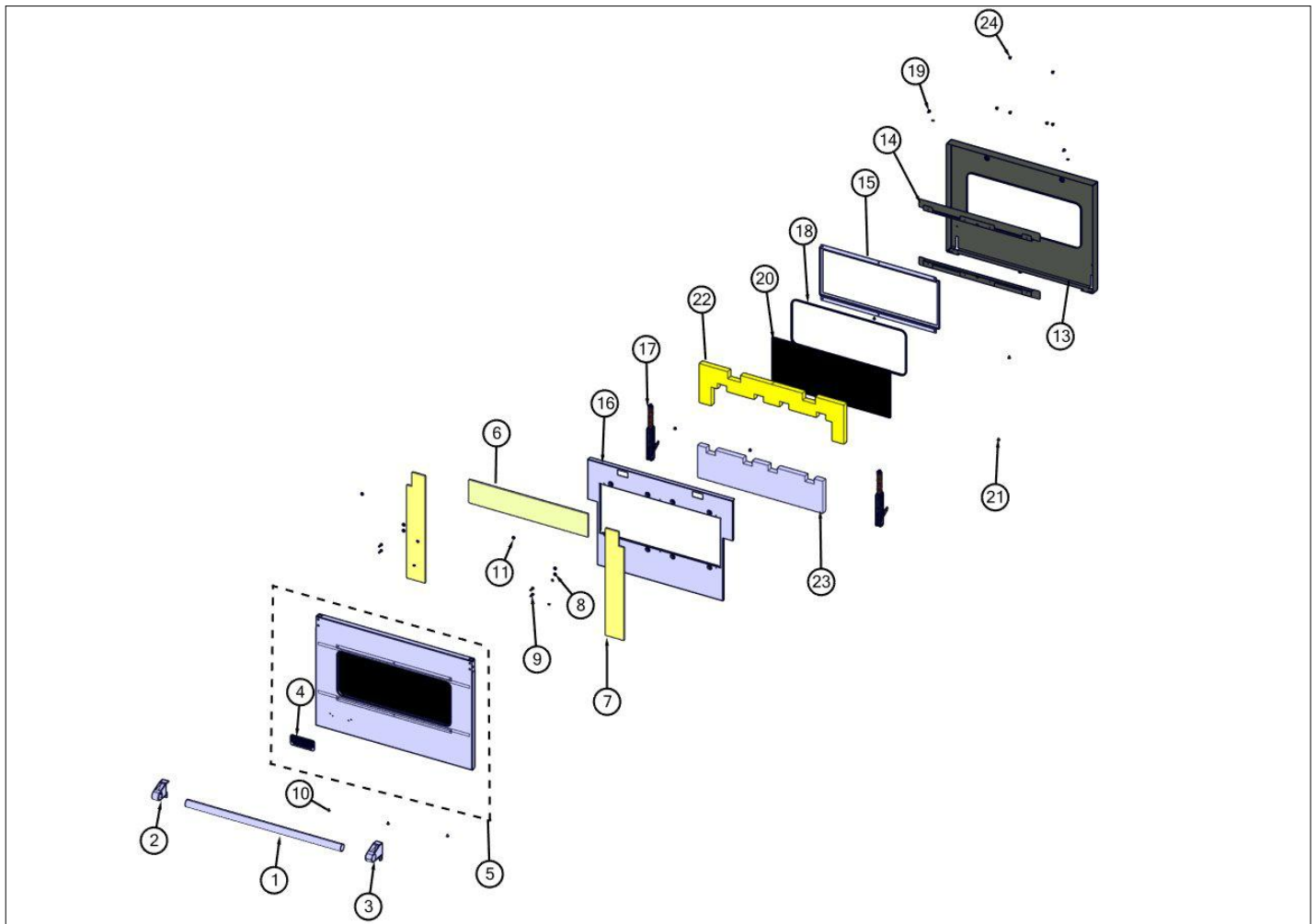


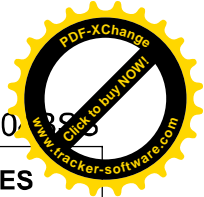
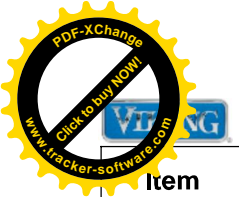


VGR530

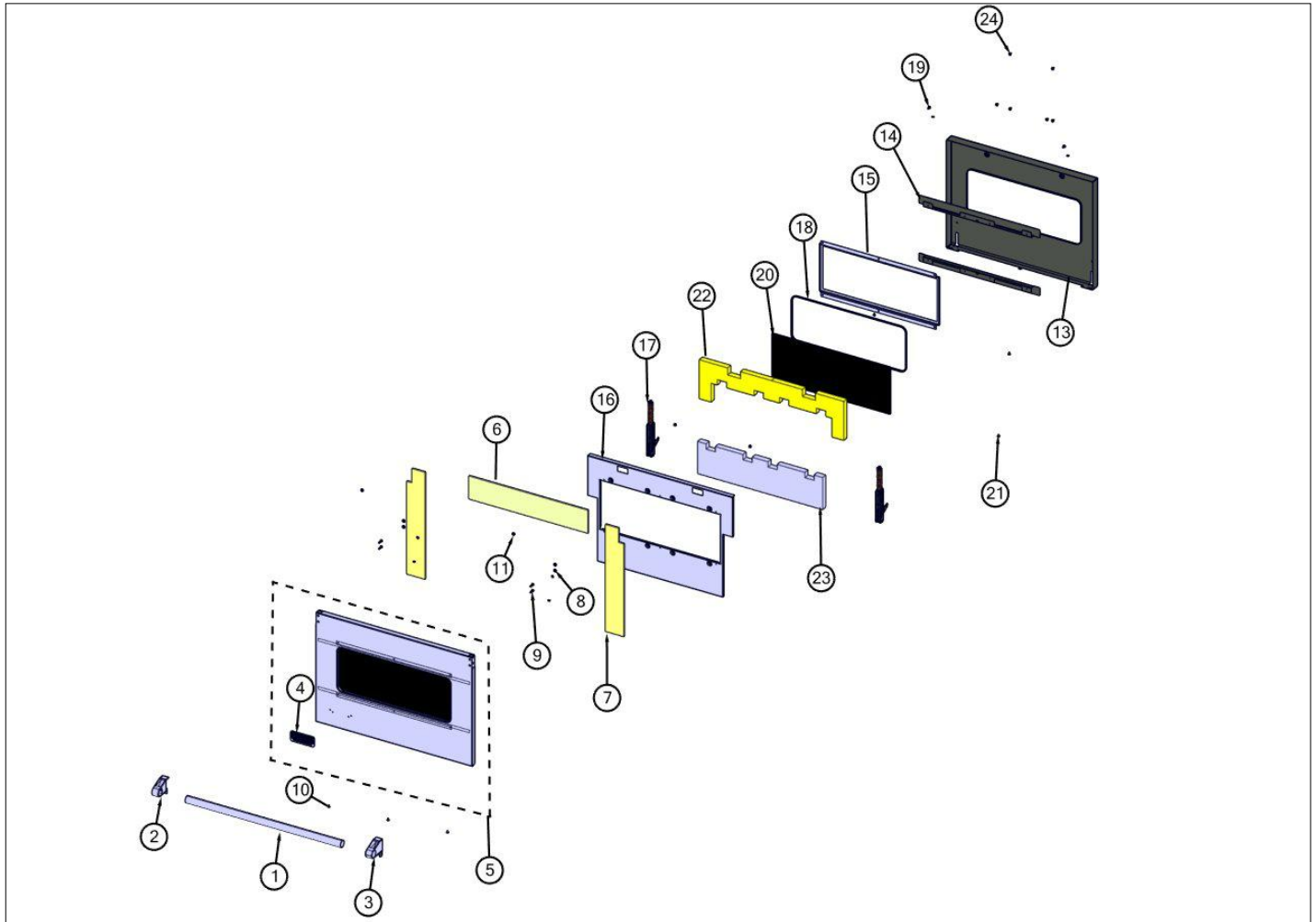


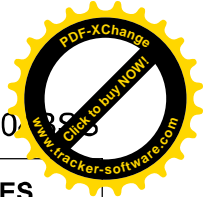
Item	Part No.	Name	Qty	Uom	NOTES
22	PB040053	1/2" 90 DEG. ELBOW	1	EA	
23	019938-000	NIPPLE, 1/2" NPT X 3.5" LONG, STEEL	1	EA	



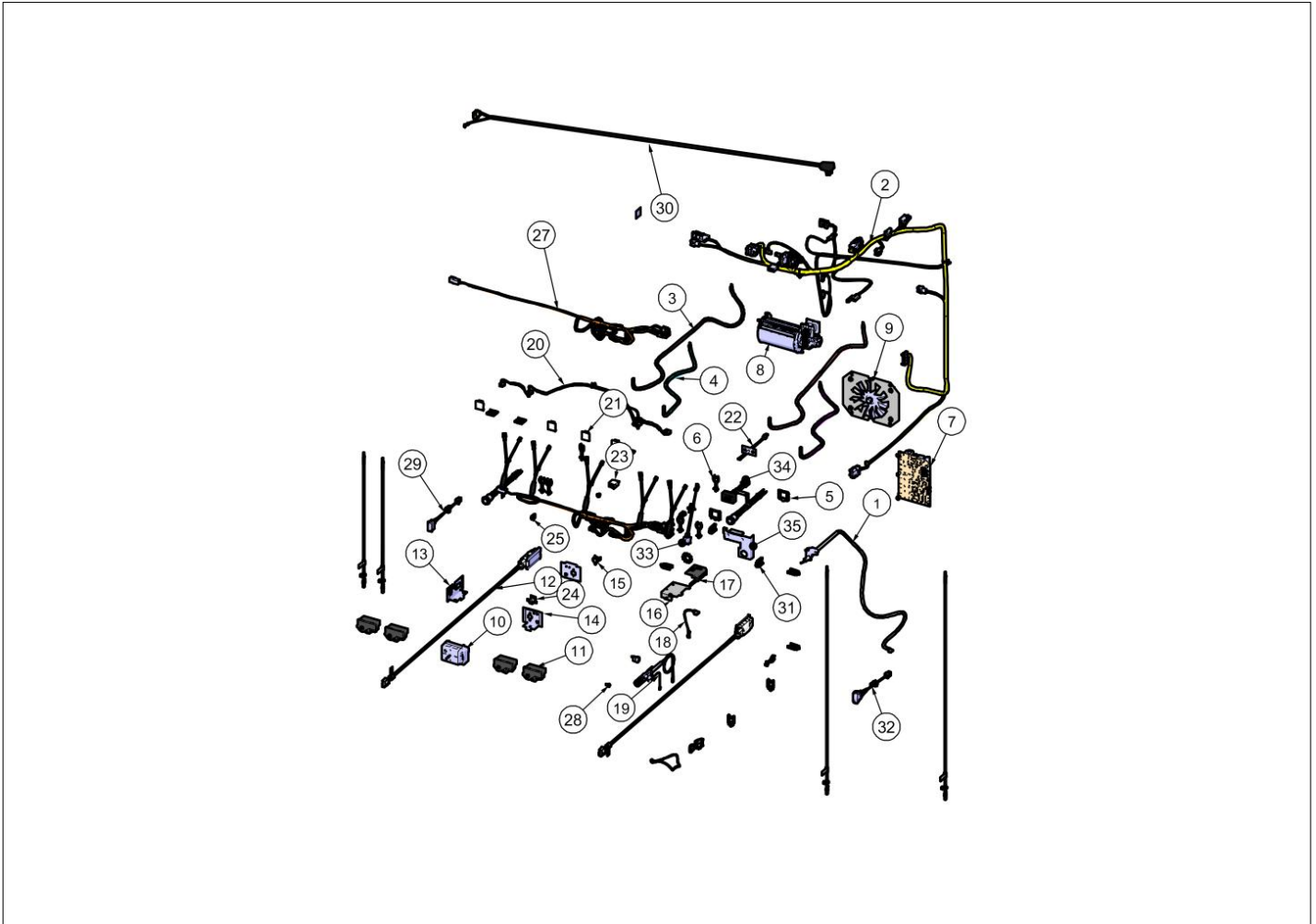


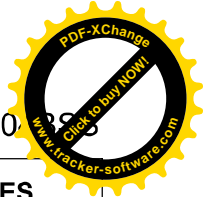
Item	Part No.	Name	Qty	Uom	NOTES
1	002728-000	DOOR HANDLE - SS, 1.25" 29.5	1	EA	
2	003011-000	DOOR HANDLE ENDCAP ASSY, LH (CHROME)	1	EA	
3	003012-000	DOOR HANDLE ENDCAP ASSY, RH (CHROME)	1	EA	
4	PE010016	LOGO (ALL RANGES) *BK/CHR 307997W	1	EA	
5	058281-000	DOOR, OS, KIT, VGR530	1	EA	
5	062495-002	DOOR, OS, KIT, VGR530, PAINTED BK	1	EA	
5	062495-005	DOOR, OS, KIT, VGR530, PAINTED GG	1	EA	
5	062495-006	DOOR, OS, KIT, VGR530, PAINTED WH	1	EA	
5	062495-008	DOOR, OS, KIT, VGR530, PAINTED BU	1	EA	
5	062495-013	DOOR, OS, KIT, VGR530, PAINTED CB	1	EA	
5	062495-024	DOOR, OS, KIT, VGR530, PAINTED AR	1	EA	
6	006788-000	INSULATION,DOOR,TOP,SUPE RWOOL,.25,VDSC530	1	EA	
7	006787-000	INSULATION,DOOR,SIDE,SUPE RWOOL,.25,VDSC530	2	EA	
8	004907-000	STEEL FINISHING PLUG, NICKEL PLTD 25/64" HOLE	4	EA	
9	030823-000	#10-32 PAN HEAD PHILLIPS MACHINE SCREW	4	EA	
10	PD020032	SRW-8(A)X3/8"PH.WFR HD 7/16DIA*NICL	2	EA	
11	PD020073	SRW #10 X 24 X 3/8 WAFER HD TYPE23	2	EA	
13	044058-402	PNL, LINER, WA, 30"BK	1	EA	
14	048401-000	SPACER, CHANNEL	2	EA	
15	L20014077	30" WINDOW HOLDER	1	EA	
16	046032-000	RETAINER, INSL, 30" INSIDE	1	EA	
17	046001-000	HINGE, NUOVA STAR, ORANGE	2	EA	
18	PB070014	DOOR GLASS SEAL STRIP - WINDOW DRS.	4.88ft	EA	
19	046651-000	SCREW, TRILOBE, 10-32, TRUSS, PH, BLACK	2	EA	



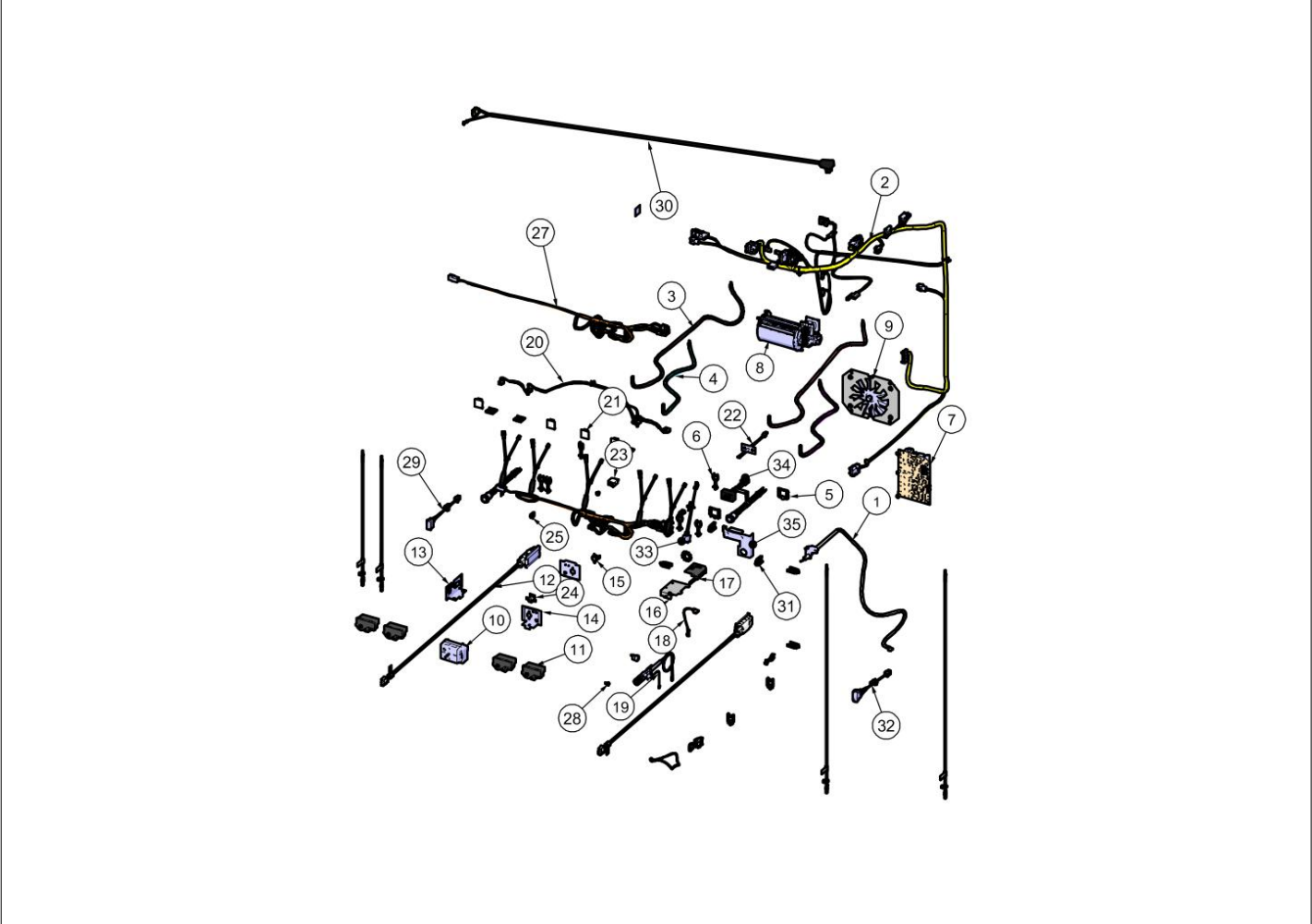


Item	Part No.	Name	Qty	Uom	NOTES
20	025099-000	INNER DOOR GLASS, 30"	1	EA	
21	PD020063	SCREW-#8(A) X 3/8"PH WFR HD/BK OXID	4	EA	
22	046192-000	INSULATION, LINER, DOOR, 30"	1	EA	
23	046674-000	INSULATION, DOOR LINER, BOTTOM, 30"	1	EA	
24	004526-000	10 x 1/2 PH, NPLT, TAPPING SCREW	14	EA	





Item	Part No.	Name	Qty	Uom	NOTES
1	059096-000	ELECTRODE, W/LEAD, BROIL, 28.5"	1	EA	
2	058559-000	HARN, VGR530, MAIN	1	EA	
3	058659-604	HARN, VGR5, ELEC, BURN, REAR	2	EA	
4	058659-603	HARN, VGR5, ELEC, BURN, FRNT	2	EA	
5	045550-000	SADDLE, WIRE, EDGE	2	EA	
6	045551-000	CLIP, HARNESS, STANDOFF	7	EA	
7	043453-000	MODULE, DSI	1	EA	
8	030567-000	FAN,BLOW,ASM 120V (51480)	1	EA	
9	023090-000	MOTOR, CONV ASM	1	EA	
10	013213-000	TSTAT, SMPS, ELEC, 2-POS, .91" SHAFT, CB	1	EA	
11	035795-000	MODULE, IGN, GAS,SNGL	4	EA	
12	068653-601	LIGHT, 120V/25W, G9, HALOGEN, SIDE	2	EA	
13	058454-000	BRACKET, DISCONNECT, POWER, LH	1	EA	
14	058320-000	BRACKET, SWITCH, LIMIT	2	EA	
15	058936-000	SWITCH, SPST, NO, BIMETAL, 115F, RA TABS	1	EA	
16	058313-000	BRACKET, SWITCH, OVEN LIGHT	1	EA	
17	048347-000	SWITCH, SPDT, DOOR, STRAIGHT TABS	1	EA	
18	043994-000	WIRE, GROUND, 5"	1	EA	
19	043657-000	ELECTRODE W/LEAD, BAKE, ASSY	1	EA	
20	059009-000	HARN, VGR5304B, IRIS	1	EA	
21	049878-000	CORD, CLIP, ADHESIVE	7	EA	
22	PE050206	RTD THERMOSTAT PROBE	1	EA	
23	043135-000	HOUSING, LIGHT, LED, BLUE, 3.3V	1	EA	
24	PJ030039	BI-METAL THERMOSTAT 275 DEGREES	1	EA	
25	050610-000	SADDLE, WIRE, EDGE, .46 X .29	2	EA	
26	027968-000	INDICATOR, LIGHT, BLUE	1	EA	





Item	Part No.	Name	Qty	Uom	NOTES
27	059741-000	HARN, VGCC, RH CP, NO GRID, CAPPED	1	EA	
28	PD020010	10 X 3/8 GREEN GROUNDING SCREW	5	EA	
29	044195-000	SWITCH, PB-LT, 5WIRE, ASSY	2	EA	
30	044747-000	CORD, SUPPLY, CORD	1	EA	
31	045548-000	CLIP, ROUTING, WIRE	8	EA	
32	048809-000	LAMP, LED, 12VDC, 2.84K, WHT HS, ASM & FAMILY	5	EA	
33	046283-000	SWITCH, LIGHTS, ACCENT W/CONN	1	EA	
34	069992-000	12 Volt Power Supply Kit	1	EA	
Not Shown	NOTE	SEE TC-0118-SP SERVICE BULLETIN		EA	
35	068332-000	BRKT, PWR SUPPLY	1	EA	
Not Shown	NOTE	SEE TC-0118-SP SERVICE BULLETIN		EA	
NI	044937-000	LAMP, LED, 12VDC, 2.84K, WHT HS, ASM & FAMILY	5	EA	

VGR530BSS Rack

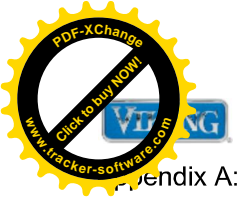




VGR530

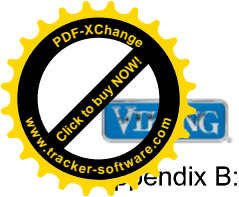


Item	Part No.	Name	Qty	Uom	NOTES
1	065730-000	RACK, GLIDE, 30", W/HDL, ASSY	2	EA	
2	065467-000	RACK, PRO, W/HDL, 30"	1	EA	
3	066225-402	GUIDE, RACK, RH- BK	2	EA	



Appendix A:Pages Index

Base View	3
Control View	1
Decor View	4
Door View	6
Electrical Asm View	7
Gas Asm View	5
Surface View	2
VGR5304BSS Rack	8

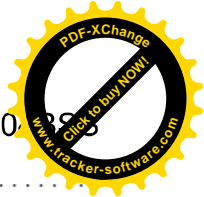
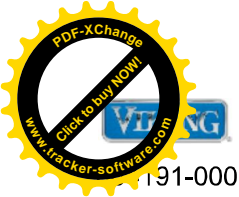


Appendix B: Parts Index

001394-041	5	031445-402	3
001394-042	5	033668-000	4
001394-044	5	034927-000	4
001394-046	5	034928-000	4
002728-000	6	035784-000	4
002923-000	5	035795-000	7
002925-000	2	035881-000	1
003011-000	6	035891-000	1
003012-000	6	037304-000	5
003322-041	2	038426-000	4
003860-000	2, 3, 5	038577-002	4
004526-000	6	038577-005	4
004907-000	6	038577-006	4
005464-000	3	038577-008	4
005536-000	3	038577-013	4
005944-000	3	038577-024	4
005945-000	3	038943-000	3
006035-000	2	040736-000	3
006313-000	5	041445-000	4
006787-000	6	041808-000	3
006788-000	6	043135-000	7
006950-000	3	043453-000	7
006956-000	3	043657-000	7
007147-000	5	043746-000	4
008026-000	3	043994-000	7
009112-000	5	044058-402	6
009197-000	2	044096-000	5
010251-000	3	044178-000	4
013213-000	7	044195-000	7
013386-000	5	044246-000	5
018200-000	2	044747-000	7
019938-000	5	044793-000	3
020409-000	3	044937-000	7
020412-000	3	045034-000	3
021225-402	3	045060-000	3
023090-000	7	045548-000	7
025099-000	6	045550-000	7
027968-000	7	045551-000	7
030567-000	7	046001-000	6
030823-000	6	046032-000	6
		046192-000	6



283-000	7	058397-000	3
046651-000	3, 6	058399-000	7
046674-000	6	058454-000	7
048347-000	7	058481-000	5
048401-000	6	058559-000	7
048809-000	7	058659-603	7
049416-000	2, 2	058659-604	7
049420-000	2	058839-000	3
049426-000	2	058901-000	3
049500-000	3	058936-000	7
049578-000	3	059004-2071	1
049588-000	3	059009-000	7
049609-000	3	059024-000	3
049878-000	7	059056-000	3
050172-000	1	059096-000	7
050267-000	3	059489-000	3
050610-000	7	059741-000	7
051809-402	3	060464-000	3
052632-000	3	062475-000	4
052759-000	5	062476-000	4
055025-000	3	062478-002	4
056185-2068	1	062478-005	4
056872-000	4	062478-006	4
056873-000	4	062478-008	4
056942-000	3	062478-013	4
057689-000	3	062478-024	4
057765-000	3	062495-002	6
057863-000	3	062495-005	6
057905-000	4	062495-006	6
058141-000	5	062495-008	6
058142-000	5	062495-013	6
058157-000	5	062495-024	6
058281-000	6	062653-002	4
058313-000	7	062653-005	4
058320-000	7	062653-006	4
058346-000	3	062653-008	4
058347-000	3	062653-013	4
058349-000	3	062653-024	4
058355-000	3	063759-2809	1
058363-000	3	063891-000	1
058382-000	3	064189-000	3



191-000	3	PE070069	
065467-000	8	PJ030039	7
065730-000	8		
066203-000	3		
066225-402	8		
066958-000	2		
068332-000	7		
068653-601	7		
069992-000	7		
A2002654	4		
A2004428	3		
A2004429	3		
A2004439	3		
E9107413BK	2		
G3001876	5		
G9104438BK	3		
L20014077	6		
PA070003	5		
PB020192	5		
PB020193	5		
PB040027	5		
PB040040	5		
PB040053	5		
PB070014	6		
PB070199	3		
PC030007	3		
PD010012	5		
PD010022	3		
PD020002	4		
PD020010	7		
PD020032	6		
PD020033	3		
PD020046	1		
PD020063	6		
PD020073	6		
PD020076	5		
PD020112	4		
PD020269	1		
PD030018	5		
PE010016	6		
PE050206	7		