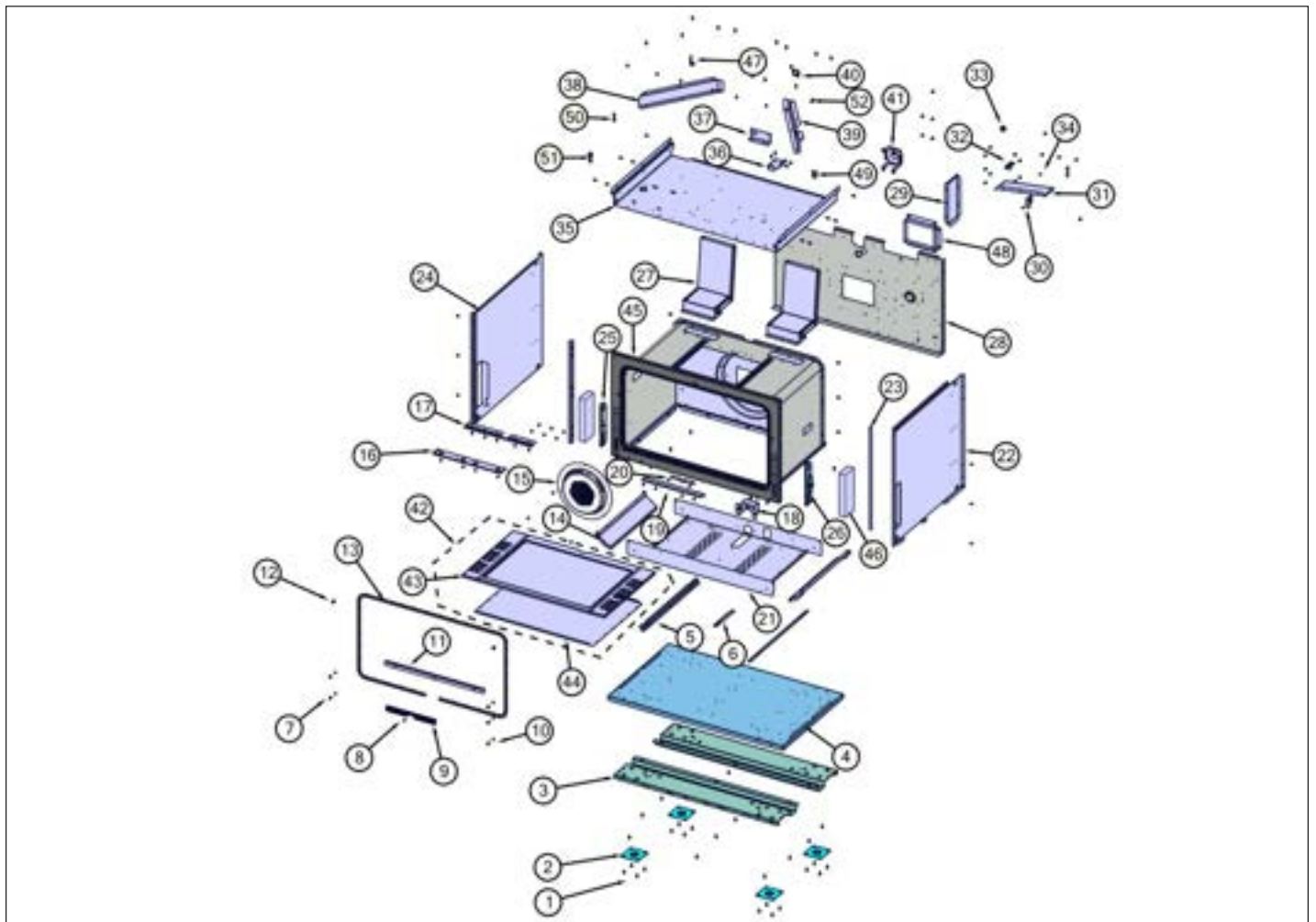


VGR73626BSS

| | |
|------------------------------|---|
| Base View | 1 |
| Control View | 2 |
| Decor View | 3 |
| Gas Asm View | 4 |
| Surface Cooking View | 5 |
| Door View | 6 |
| Electrical View | 7 |
| Harness View | 8 |
| Appendix A:Pages Index | A |
| Appendix B:Parts Index | B |

Base View





| Item | Part No. | Name | Qty | Uom | NOTES |
|------|------------|---|-----|-----|-------|
| 1 | 003860-000 | 10-18 x .500 FASTNR,SCR,HXWH,STL,ZPLT | 38 | EA | |
| 2 | PC030007 | LEG PLATE - 3/4" THREADED HOLE | 4 | EA | |
| 3 | 046935-000 | BRACKET, LEG, OFFSET (NON- SERVICEABLE PART) | 2 | EA | |
| 4 | 020604-000 | BASE, RANGE | 1 | EA | |
| 5 | A2004429 | OVEN BOTTOM INSUL. BRACE (VGSC306) | 2 | EA | |
| 6 | 050794-000 | BRACKET, HOLD-DOWN, BOX, FIRE | 1 | EA | |
| 7 | 046651-000 | SCREW, TRILOBE, 10-32, TRUSS, PH, BLACK | 5 | EA | |
| 8 | 037304-000 | FASTENER, PNH, TORX, AB, PSVD, WAX | 23 | EA | |
| 9 | 009005-000 | GASKET CLIP RAW | 1 | EA | |
| 10 | 052632-000 | WASHER, FLAT, PTFE, NO.10 | 5 | EA | |
| 11 | 050267-000 | BRACKET, SUPPORT, BOTTOM, OVEN, 30"/36" | 1 | EA | |
| 12 | 043800-000 | BUMPER, RBR, BLK | 2 | EA | |
| 13 | 046019-000 | GASKET, LINER, AG, ASM 36" | 1 | EA | |
| 14 | 014747-000 | BRACKET, BNR, SIDE, PORCELAIN | 2 | EA | |
| 15 | 013580-402 | CONV COVER W/BK PORC | 1 | EA | |
| 16 | 020409-000 | BRACKET, SPRT, FR, I/R BROILER | 1 | EA | |
| 17 | 020412-000 | BRACKET, SPRT, REAR, I/R BROILER | 1 | EA | |
| 18 | 040736-000 | BRKT, ORF | 1 | EA | |
| 19 | 031445-402 | BRACE, OVEN, BOTTOM, BACK W/BK PORC | 1 | EA | |
| 20 | A2004428 | REAR BOTTOM BRCKT (VGSC306) | 1 | EA | |
| 21 | 043730-000 | OVEN CVTY, BTM, 36" | 1 | EA | |
| 22 | 042339-000 | PANEL, INSL, RH | 1 | EA | |
| 23 | 005536-000 | TRIM | 1 | EA | |
| 24 | 042343-000 | PANEL, INSL, LH | 1 | EA | |
| 25 | 045060-000 | RECEIVER, HINGE, SLOW- CLOSE, UNDAMPENED | 1 | EA | |

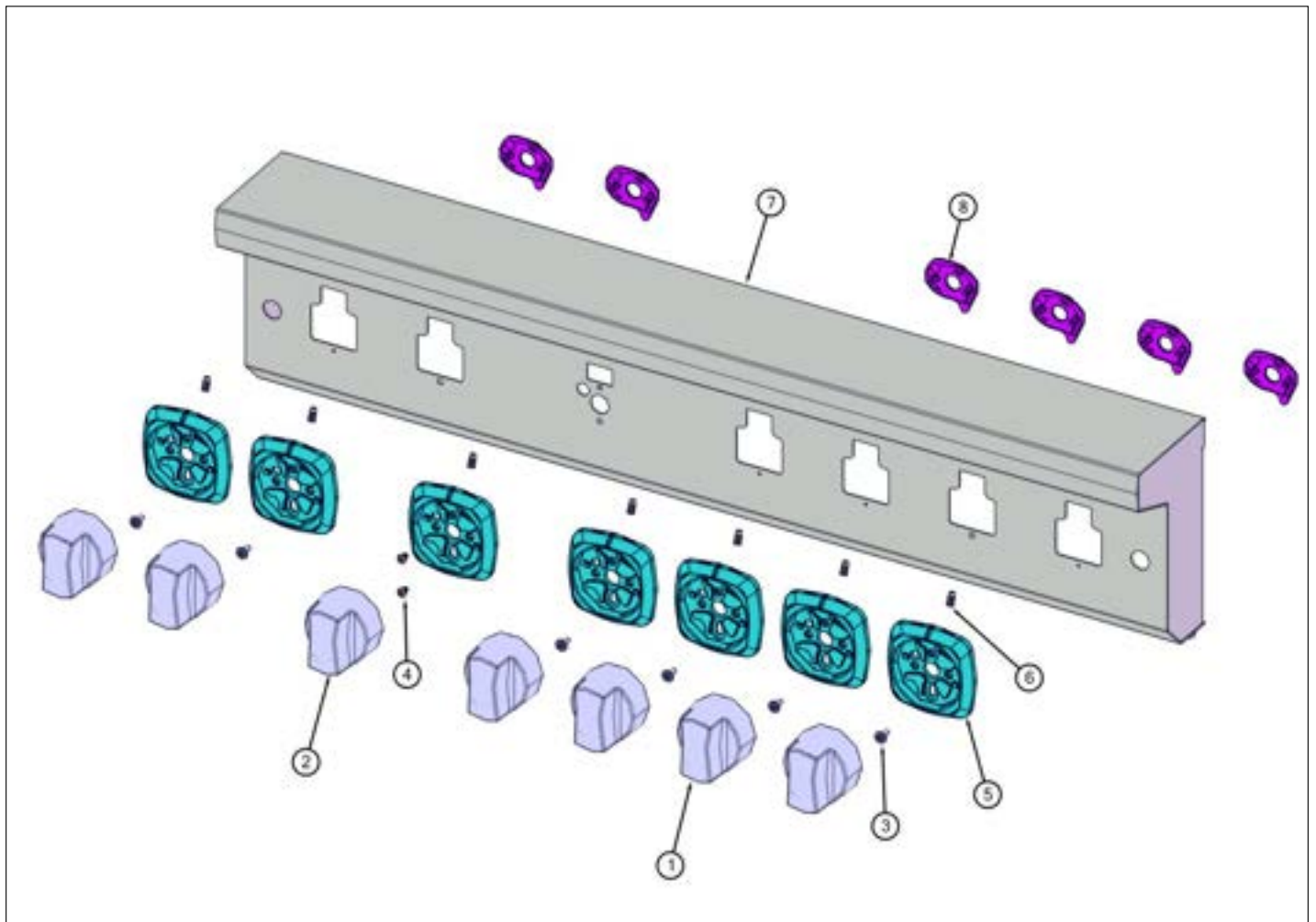


| Item | Part No. | Name | Qty | Uom | NOTES |
|------|------------|---------------------------------------|-----|-----|-------|
| 26 | 054057-000 | RECEIVER, HINGE, SLOW-CLOSE, DAMPENED | 1 | EA | |
| 27 | 062991-000 | VENT FLUE, ASM | 2 | EA | |
| 28 | 049499-000 | PANEL, INSL, GRIDDLE, BACK, 36" | 1 | EA | |
| 29 | 046187-000 | SHIELD, WATER, DIVERTER | 1 | EA | |
| 30 | 033668-000 | BRACKET, DISCONNECT | 1 | EA | |
| 31 | 049629-000 | SHIELD, DIVERTER, WATER | 1 | EA | |
| 32 | 012438-000 | SWITCH, LIM, BRKT | 1 | EA | |
| 33 | PD040005 | SNAP BUSHING - 7/8" | 1 | EA | |
| 34 | PD020010 | 10 X 3/8 GREEN GROUNDING SCREW | 4 | EA | |
| 35 | 064635-000 | PANEL, INSL, 36" TOP, VGR736 | 1 | EA | |
| 36 | 046065-000 | BRACKET, SWITCH, OVEN LIGHT | 1 | EA | |
| 37 | 060591-000 | BRACKET, SWITCH, LIMIT, HI | 1 | EA | |
| 38 | 042346-000 | DIVERTER, AIR, LH | 1 | EA | |
| 39 | 042347-000 | DIVERTER, AIR, RH | 1 | EA | |
| 40 | 045550-000 | SADDLE, WIRE, EDGE | 1 | EA | |
| 41 | 046409-000 | BRCKT, RETAINER, REGULATOR | 1 | EA | |
| 42 | 066210-000 | ASM, BOTTOM, CABITY, OVEN, GAS, 36" | 1 | EA | |
| 43 | 066210-000 | ASM, BOTTOM, CABITY, OVEN, GAS, 36" | 1 | EA | |
| 44 | A2005525 | OVEN BOTTOM HEAT SHIELD | 1 | EA | |
| NI | 008026-000 | #6-20 HEX WASHER SS SCREW | 12 | EA | |
| 45 | 043699-402 | FRAME, FR, WELDMENT, 36" BK | 1 | EA | |
| 46 | 046677-000 | INSULATION, FBGL, RECEIVER, DAMPENING | 2 | EA | |
| 47 | 048048-000 | BRKT, SWITCH, LIM, HIGH | 1 | EA | |
| 48 | A2008467 | INSULATION SHIELD | 1 | EA | |
| 49 | 045548-000 | CLIP, ROUTING, WIRE | 12 | EA | |
| 50 | 045528-000 | STANDOFF, LOCKING CLIP | 2 | EA | |
| 51 | 045551-000 | CLIP, HARNESS, STANDOFF | 1 | EA | |



| Item | Part No. | Name | Qty | Uom | NOTES |
|------|------------|---|-----|-----|-------|
| NI | 056013-000 | INSULATION, FIBERGLASS, ROLL, 3" THK, 20" WIDE X 45' LONG | 1 | EA | |
| 52 | 044044-000 | GROMMET, SWITCH, DOOR, RBR | 1 | EA | |

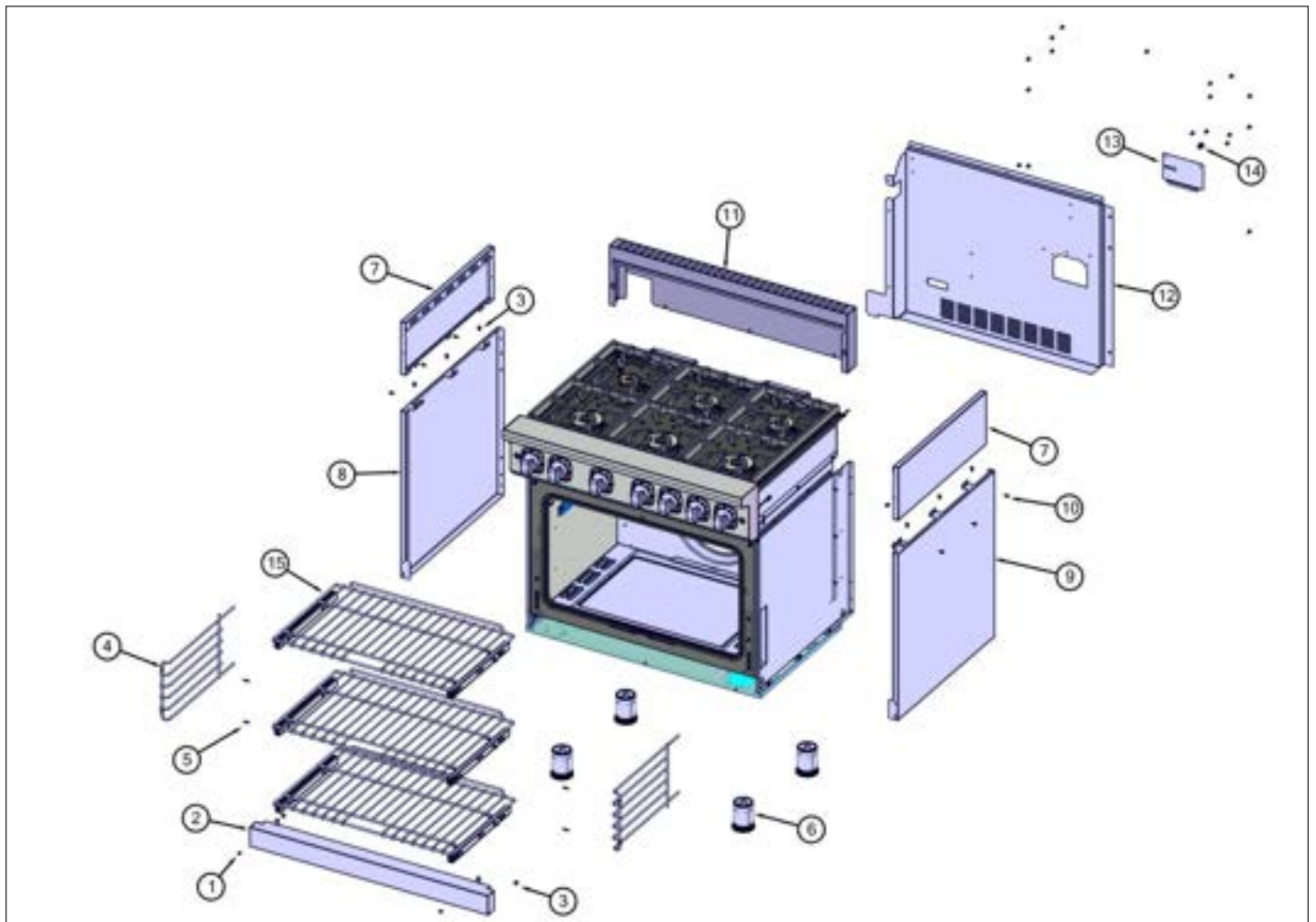
Control View





| Item | Part No. | Name | Qty | Uom | NOTES |
|--|-------------|---|-----|-----|-------|
| 1 | 061041-000 | KNOB, BURNER, ASSY (SEE 042558-000) | 6 | EA | |
| 2 | 067118-2544 | KNOB, THERMOSTAT, OVEN, A/G, W-GRAPHICS | 1 | EA | |
| 3 | PD020046 | ' #8 X 1/2 SCREWS | 6 | EA | |
| 4 | PD020269 | #8 PAN HEAD SCREW | 2 | EA | |
| 5 | 061090-501 | BEZEL, ASSY, LED, SQUARE, LARGE | 7 | EA | |
| Comments for Part Num. 061090-501 | | | | | |
| profixappliances@gmail.com on Feb 27, 2020 | | | | | |
| SEE SERVICE BULLETIN TC-0126-SP REGARDING NEW BEZELS | | | | | |
| 6 | 044937-000 | LENS, COVER, LED, CLEAR | 7 | EA | |
| 7 | 063654-2846 | ASM, PANEL, CTRL, VGR73626B, W/GRAPHICS | 1 | EA | |
| 8 | 063640-000 | ADAPTER, BEZEL, LED | 6 | EA | |

Decor View





| Item | Part No. | Name | Qty | Uom | NOTES |
|------|-------------|--|-----|-----|-------|
| 1 | PD020032 | SRW-8(A)X3/8"PH.WFR HD 7/16DIA*NICL | 2 | EA | |
| 2 | 042287-000 | KICKPLATE, GAS & DUAL FUEL, 36" | 1 | EA | |
| 2 | 042323-002 | KICKPLATE, GAS & DUAL FUEL, 36" BK | 1 | EA | |
| 2 | 042323-005 | KICKPLATE, GAS & DUAL FUEL, 36" GG | 1 | EA | |
| 2 | 042323-006 | KICKPLATE, GAS & DUAL FUEL, 36" WH | 1 | EA | |
| 2 | 042323-008 | KICKPLATE, GAS & DUAL FUEL, 36" BU | 1 | EA | |
| 2 | 042323-013 | KICKPLATE, GAS & DUAL FUEL, 36" CB | 1 | EA | |
| 2 | 042323-024 | KICKPLATE, GAS & DUAL FUEL, 36" AR | 1 | EA | |
| 2 | 042323-2801 | KICKPLATE, GAS & DUAL FUEL, 36" Kalamata Red (KA) | 1 | EA | |
| 2 | 042323-2847 | KICKPLATE, GAS & DUAL FUEL, 36" Blackforest Green (BF) | 1 | EA | |
| 2 | 042323-6180 | KICKPLATE, GAS & DUAL FUEL, 36" Cypress Green (CY) | 1 | EA | |
| 2 | 042323-6258 | KICKPLATE, GAS & DUAL FUEL, 36" Cast Black (CS) | 1 | EA | |
| 2 | 042323-6421 | KICKPLATE, GAS & DUAL FUEL, 36" Vanilla Cream (VC) | 1 | EA | |
| 2 | 042323-6765 | KICKPLATE, GAS & DUAL FUEL, 36" Bywater Blue (BW) | 1 | EA | |
| 2 | 042323-6797 | KICKPLATE, GAS & DUAL FUEL, 36" Alluvial Blue (AB) | 1 | EA | |
| 2 | 042323-6871 | KICKPLATE, GAS & DUAL FUEL, 36" San Marzano Red (SM) | 1 | EA | |
| 2 | 042323-7024 | KICKPLATE, GAS & DUAL FUEL, 36" Pacific Grey (PG) | 1 | EA | |
| 2 | 042323-7070 | KICKPLATE, GAS & DUAL FUEL, 36" Frost White (FW) | 1 | EA | |
| 2 | 042323-7585 | KICKPLATE, GAS & DUAL FUEL, 36" Reduction Red (RE) | 1 | EA | |
| 2 | 042323-7652 | KICKPLATE, GAS & DUAL FUEL, 36" Artic Grey (AG) | 1 | EA | |
| 2 | 042323-7674 | KICKPLATE, GAS & DUAL FUEL, 36" Damascus Grey (DG) | 1 | EA | |



| Item | Part No. | Name | Qty | Uom | NOTES |
|------|-------------|---|-----|-----|-------|
| 2 | 042323-9178 | KICKPLATE, GAS & DUAL FUEL, 36" Slate Blue (SB) | 1 | EA | |
| 3 | 003801-000 | SHOULDER SCREW, #10 | 10 | EA | |
| 4 | 066225-402 | GUIDE, RACK, RH- BK | 2 | EA | |
| 5 | pd020232 | #8 X 3/4" PH PAN HEAD TEK SCREW (BLACK OXIDE) | 4 | EA | |
| 6 | 044178-000 | RANGE, LEG, ADJUSTABLE | 1 | EA | |
| 7 | 052427-000 | COVER, OS, RH/LH UPPER | 2 | EA | |
| 8 | 042372-000 | COVER, OS, LH | 1 | EA | |
| 8 | 049552-002 | COVER, OS, LH, DECARB BK | 1 | EA | |
| 8 | 049552-005 | COVER, OS, LH, DECARB GG | 1 | EA | |
| 8 | 049552-006 | COVER, OS, LH, DECARB WH | 1 | EA | |
| 8 | 049552-008 | COVER, OS, LH, DECARB BU | 1 | EA | |
| 8 | 049552-013 | COVER, OS, LH, DECARB CB | 1 | EA | |
| 8 | 049552-024 | COVER, OS, LH, DECARB AR | 1 | EA | |
| 8 | 049552-2801 | OS Left Hand Cover - Kalamata Red (KA) | 1 | EA | |
| 8 | 049552-2847 | OS Left Hand Cover - Blackforest Green (BF) | 1 | EA | |
| 8 | 049552-6180 | OS Left Hand Cover - Cypress Green (CY) | 1 | EA | |
| 8 | 049552-6258 | OS Left Hand Cover - Cast Black (CS) | 1 | EA | |
| 8 | 049552-6421 | OS Left Hand Cover - Vanilla Cream (VC) | 1 | EA | |
| 8 | 049552-6765 | OS Left Hand Cover - Bywater Blue (BW) | 1 | EA | |
| 8 | 049552-6797 | OS Left Hand Cover - Alluvial Blue (AB) | 1 | EA | |
| 8 | 049552-6871 | OS Left Hand Cover - San Marzano Red (SM) | 1 | EA | |
| 8 | 049552-7024 | OS Left Hand Cover - Pacific Grey (PG) | 1 | EA | |
| 8 | 049552-7070 | OS Left Hand Cover - Frost White (FW) | 1 | EA | |
| 8 | 049552-7585 | OS Left Hand Cover - Reduction Red (RE) | 1 | EA | |
| 8 | 049552-7652 | OS Left Hand Cover -Artic Grey (AG) | 1 | EA | |

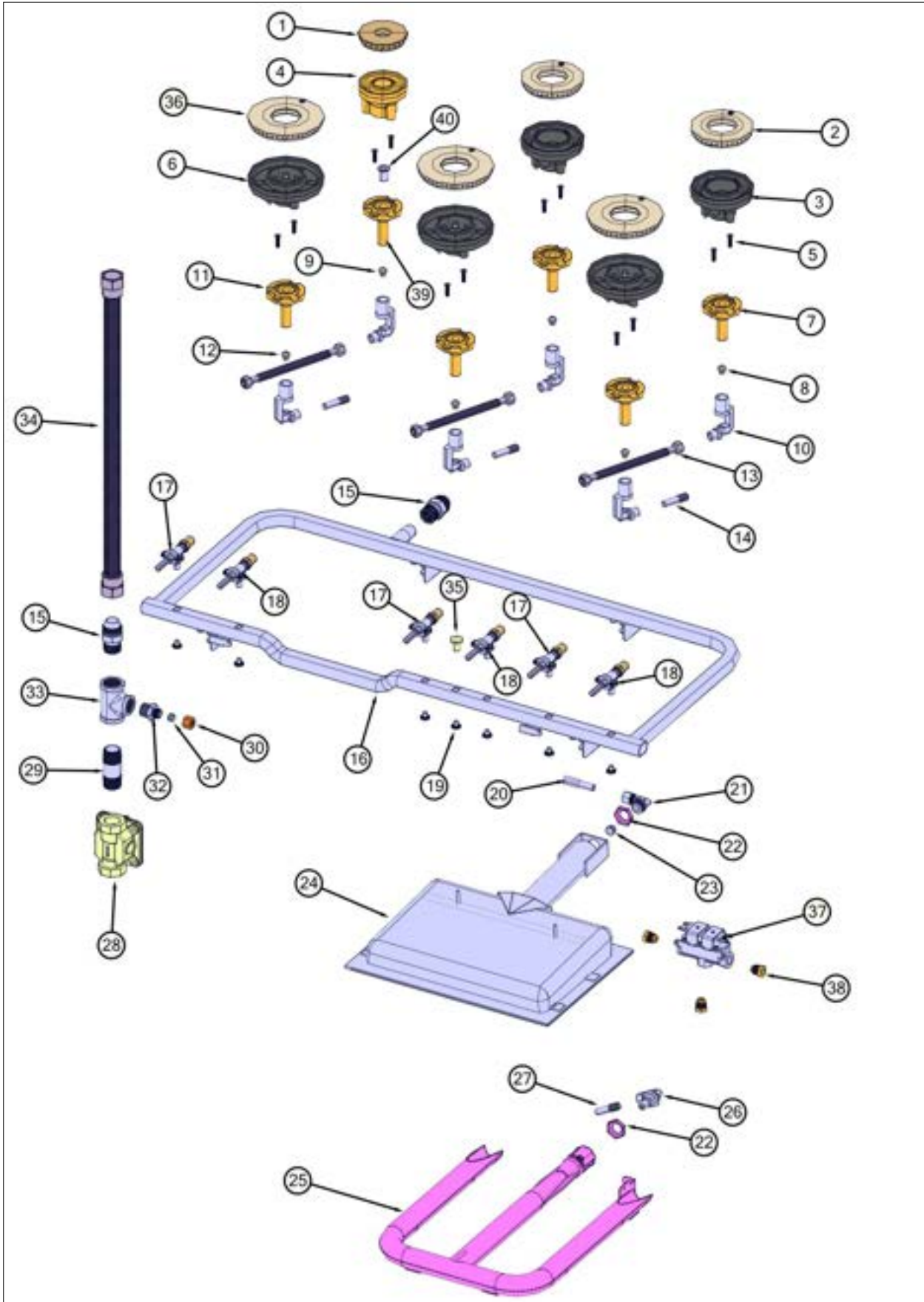


| Item | Part No. | Name | Qty | Uom | NOTES |
|------|-------------|--|-----|-----|-------|
| 8 | 049552-7674 | OS Left Hand Cover - Damascus Grey (DG) | 1 | EA | |
| 8 | 049552-9178 | OS Left Hand Cover - Slate Blue (SB) | 1 | EA | |
| 9 | 042375-000 | COVER, OS, RH | 1 | EA | |
| 9 | 049551-002 | COVER, OS, RH, DECARB BK | 1 | EA | |
| 9 | 049551-005 | COVER, OS, RH, DECARB GG | 1 | EA | |
| 9 | 049551-006 | COVER, OS, RH, DECARB WH | 1 | EA | |
| 9 | 049551-008 | COVER, OS, RH, DECARB BU | 1 | EA | |
| 9 | 049551-013 | COVER, OS, RH, DECARB CB | 1 | EA | |
| 9 | 049551-024 | COVER, OS, RH, DECARB AR | 1 | EA | |
| 9 | 049551-2801 | OS Right Hand Cover - Kalamata Red (KA) | 1 | EA | |
| 9 | 049551-2847 | OS Right Hand Cover - Blackforest Green (BF) | 1 | EA | |
| 9 | 049551-6180 | OS Right Hand Cover - Cypress Green (CY) | 1 | EA | |
| 9 | 049551-6258 | OS Right Hand Cover - Cast Black (CS) | 1 | EA | |
| 9 | 049551-6421 | OS Right Hand Cover - Vanilla Cream (VC) | 1 | EA | |
| 9 | 049551-6765 | OS Right Hand Cover - Bywater Blue (BW) | 1 | EA | |
| 9 | 049551-6797 | OS Right Hand Cover - Alluvial Blue (AB) | 1 | EA | |
| 9 | 049551-6871 | OS Right Hand Cover - San Marzano Red (SM) | 1 | EA | |
| 9 | 049551-7024 | OS Right Hand Cover - Pacific Grey (PG) | 1 | EA | |
| 9 | 049551-7070 | OS Right Hand Cover - Frost White (FW) | 1 | EA | |
| 9 | 049551-7585 | OS Right Hand Cover - Reduction Red (RE) | 1 | EA | |
| 9 | 049551-7652 | OS Right Hand Cover -Artic Grey (AG) | 1 | EA | |
| 9 | 049551-7674 | OS Right Hand Cover - Damascus Grey (DG) | 1 | EA | |
| 9 | 049551-9178 | OS Right Hand Cover - Slate Blue (SB) | 1 | EA | |
| 10 | 003860-000 | 10-18 x .500 FASTNR,SCR,HXWH,STL,ZPLT | 26 | EA | |



| Item | Part No. | Name | Qty | Uom | NOTES |
|-----------|------------|---------------------------|-----|-----|-------|
| 11 | 042117-000 | TRIM, IS, VGR, 36" | 1 | EA | |
| 12 | 042543-000 | COVER, BACK, 36" | 1 | EA | |
| 13 | 043746-000 | PNL, ACCESS, W/HEYCO | 1 | EA | |
| 14 | pe070069 | STRAIGHT-THRU BUSHING | 1 | EA | |
| 15 | 057686-000 | RACK, GLDE, 36", PRO ASSY | 3 | EA | |
| NI | A2002654 | ANTI-TIP DEVICE (VDSC) | 1 | EA | |
| NI | 034927-000 | BRACKET, ANTI-TIP | 1 | EA | |
| Not Shown | NOTE | (FOR FLOOR MOUNT) | | EA | |
| NI | 034928-000 | BRACKET, HOOK, ANTI-TIP | 1 | EA | |
| Not Shown | NOTE | (FOR FLOOR MOUNT) | | EA | |

Gas Asm View



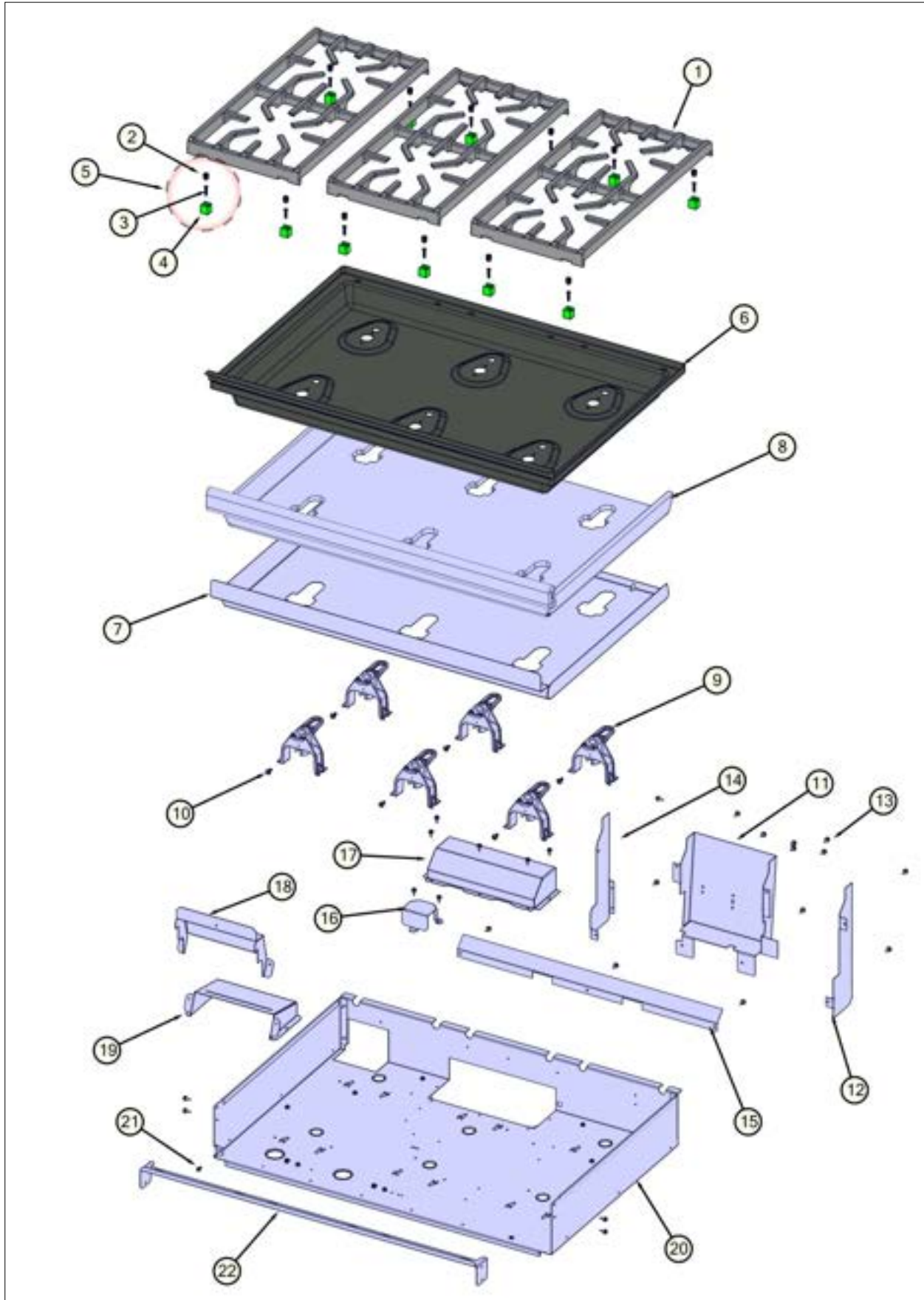


| Item | Part No. | Name | Qty | Uom | NOTES |
|------|------------|-------------------------------------|-----|-----|-------|
| 1 | 056256-000 | BURNER, HEAD, BRS, C-SIZE | 1 | EA | |
| 2 | 066169-000 | BURNER, HEAD, D | 2 | EA | |
| 3 | 066105-000 | BASE, BNR, D | 2 | EA | |
| 4 | 066177-000 | BURNER, BASE, C-SIZE | 1 | EA | |
| 5 | 046964-000 | SCREW, 10-32 X 3/4", CTSK, BLACK | 12 | EA | |
| 6 | 053357-000 | BASE, BNR, E-SIZE | 3 | EA | |
| 7 | 066171-000 | VENTURI, D NAT, D LP, FLANGE, BNR | 2 | EA | |
| 8 | 046184-000 | ORIFICE, BNR, STD, 1.70MM | 2 | EA | |
| 9 | 044688-000 | ORIFICE, BNR, STD, 1.22MM | 1 | EA | |
| 10 | 063295-000 | HOLDER, JET, BURNER | 6 | EA | |
| 11 | 067030-000 | VENTURI, E NAT, FLANGE, BNR | 3 | EA | |
| 12 | 043675-000 | ORIFICE, BNR, STD, 2.18MM | 3 | EA | |
| 13 | PB020198 | 20" FLEX TUBING | 3 | EA | |
| 14 | PB020191 | 15" FLEX TUBE | 3 | EA | |
| 15 | 044321-000 | FITTING, ADAPTOR, 3/4" FLEX TUBING | 2 | EA | |
| 16 | 056434-000 | MANIFOLD, GAS, 36", ASM | 1 | EA | |
| 17 | 061225-000 | VALVE, GAS, C & D-BNR, NAT | 3 | EA | |
| 18 | 061224-000 | VALVE, GAS, E-BNR, NAT | 3 | EA | |
| 19 | PD010012 | VALVE BOLT 1/4-20 UNC-2B 5/16" M.S. | 7 | EA | |
| 20 | PB020126 | 3/8" S.S. FLEX TUBING 15" (DGCU) | 1 | EA | |
| 21 | PB040178 | 90 DEGREE ORIFICE FITTING (VGSC306) | 1 | EA | |
| 22 | PD030018 | PALNUT - 3/4-16 | 2 | EA | |
| 23 | pb040026 | IR BURNER ORIFICE - #48 NAT. | 1 | EA | |
| 24 | G3001876 | IR BURNER ASSY (VGSC/RC) N/S | 1 | EA | |
| 25 | 043276-000 | BURNER, BAKE, ASM, 36" | 1 | EA | |
| 26 | 048031-000 | 90 DEG ORIFICE FITTING, #39 DRILL | 1 | EA | |
| 27 | PB020127 | 3/8" S.S. FLEX TUBING 20" (DGCU) | 1 | EA | |
| 28 | 046119-000 | PRESSURE REGULATOR (NAT) | 1 | EA | |



| Item | Part No. | Name | Qty | Uom | NOTES |
|------|------------|---|-----|-----|-------|
| 29 | 044637-000 | NIPPLE, PIPE, 2-1/2", 3/4" NPTM TO 3/4" NPTM | 1 | EA | |
| 30 | PB040213 | 3/8" COMPRESSION NUT (DGPU) | 1 | EA | |
| 31 | PB040192 | 3/8" CC FERREL (DGPU) | 1 | EA | |
| 32 | 044691-000 | ADAPTOR, COMPRESSION, 1/2" NPTF TO 3/8" TUBE O.D. | 1 | EA | |
| 33 | 044638-000 | TEE, PIPE, 3/4" NPTF TO 1/2" NPTM | 1 | EA | |
| 34 | 046399-000 | TUBING, 3/4 FLEX, SST, 20 | 1 | EA | |
| 35 | 002884-000 | MANIFOLD PLUG | 1 | EA | |
| 36 | 066172-000 | BURNER, HEAD, E | 3 | EA | |
| 37 | 009112-000 | VALVE, SOL, DOUBLE | 1 | EA | |
| 38 | PB040050 | 3/8CC MALE COMP. FITTING W/FERRULE | 3 | EA | |
| 39 | 044686-000 | VENTURI, C NAT, C LP, FLANGE, BNR | 1 | EA | |
| 40 | 051541-000 | C VENTURI INSERT | 1 | EA | |

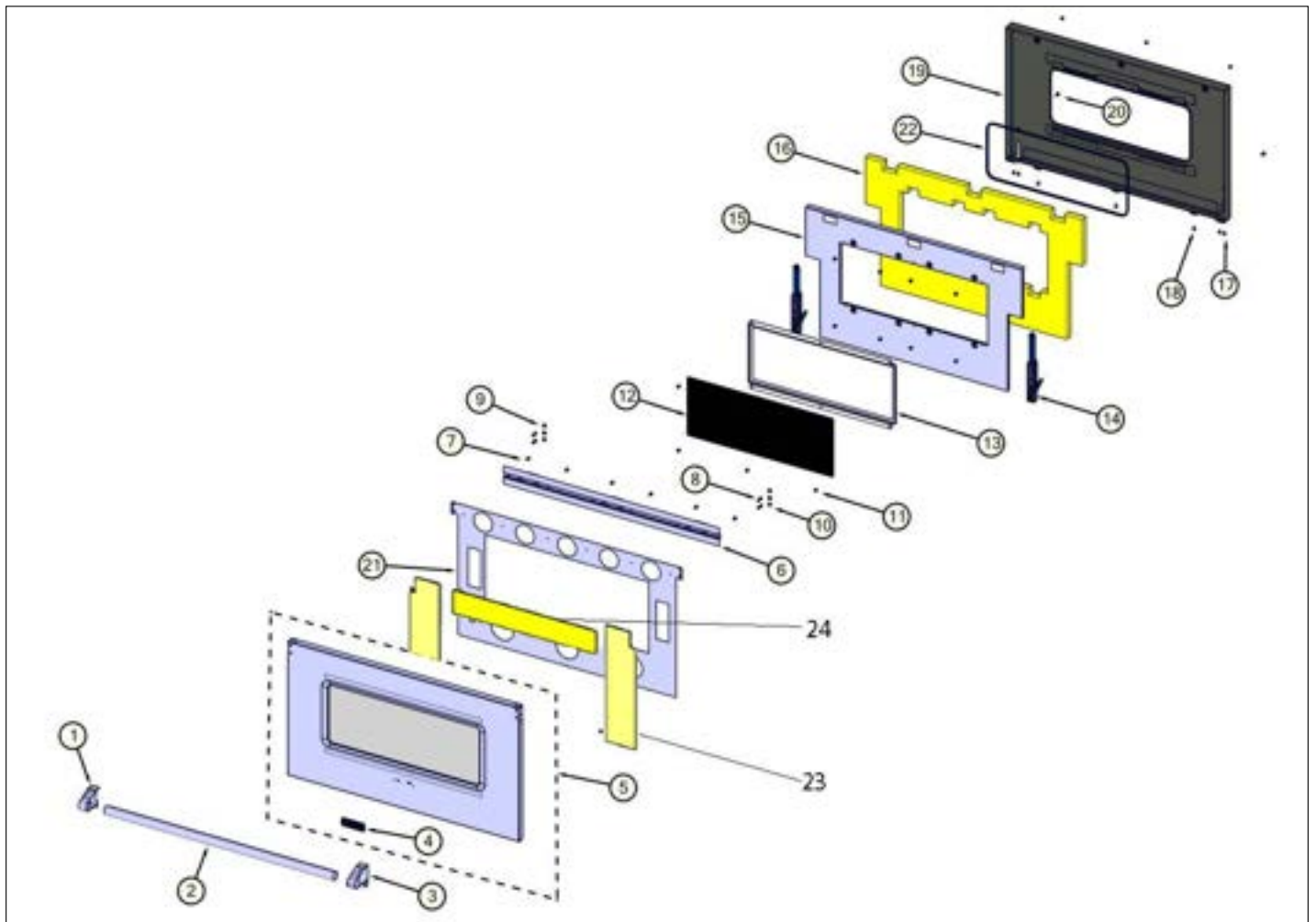
Surface Cooking View





| Item | Part No. | Name | Qty | Uom | NOTES |
|--|------------|--|-----|-----|-------|
| 1 | 042545-000 | GRATE, CAST, 12" | 3 | EA | |
| 2 | 052260-000 | SILENCER, GRATE | 12 | EA | |
| 3 | 049534-000 | SCREW, 8-32 X 3/4, PHIL, FLAT | 12 | EA | |
| 4 | 052259-000 | SUPPORT, GRATE | 12 | EA | |
| 5 | 058147-000 | GRATE, LEG, ASSY, PHASE 2 (BLK) | 12 | EA | |
| <p>Comments for Part Num. 058147-000</p> <p>gboltz@VikingRange.com on Jun 6, 2016</p> <p>See parts bulletin 2016-03P Grate support changes</p> | | | | | |
| 6 | 048017-402 | PAN, BNR, SHIM, ASM, BLK | 1 | EA | |
| 7 | 049745-000 | TRAY, PNL, INSULATION, BURNER PAN, 36" | 1 | EA | |
| 8 | 049746-000 | INSULATION, LINER, BURNER PAN, 36" | 1 | EA | |
| 9 | 066170-000 | SUPPORT, HLDR, JET | 6 | EA | |
| 10 | PD020068 | ' #10 - 32 X 1/2"TRUSS. PHIL. M.*SS* | 6 | EA | |
| 11 | 042785-000 | COVER, BLO | 1 | EA | |
| 12 | 042742-000 | DIVERTER, BRKT, LH | 1 | EA | |
| 13 | 003860-000 | 10-18 x .500 FASTNR,SCR,HXWH,STL,ZPLT | 3 | EA | |
| 14 | 042741-000 | DIVERTER, BRKT, RH | 1 | EA | |
| 15 | 031313-000 | DIVERTER, AIR 36 | 1 | EA | |
| 16 | 048188-000 | BRACKET, TEE, PIPE | 1 | EA | |
| 17 | 042350-000 | COVER, FAN | 1 | EA | |
| 18 | 049964-000 | SHIELD, HEAT, HARNESS, TOP | 1 | EA | |
| 19 | 049753-000 | SHIELD, HEAT, HARNESS, BTM | 1 | EA | |
| 20 | 066475-000 | BOX, BNR, VGR7362 | 1 | EA | |
| 21 | PD020010 | 10 X 3/8 GREEN GROUNDING SCREW | 1 | EA | |
| 22 | 049744-000 | BRACKET, MTG, 36" CONTROL PANEL | 1 | EA | |

Door View



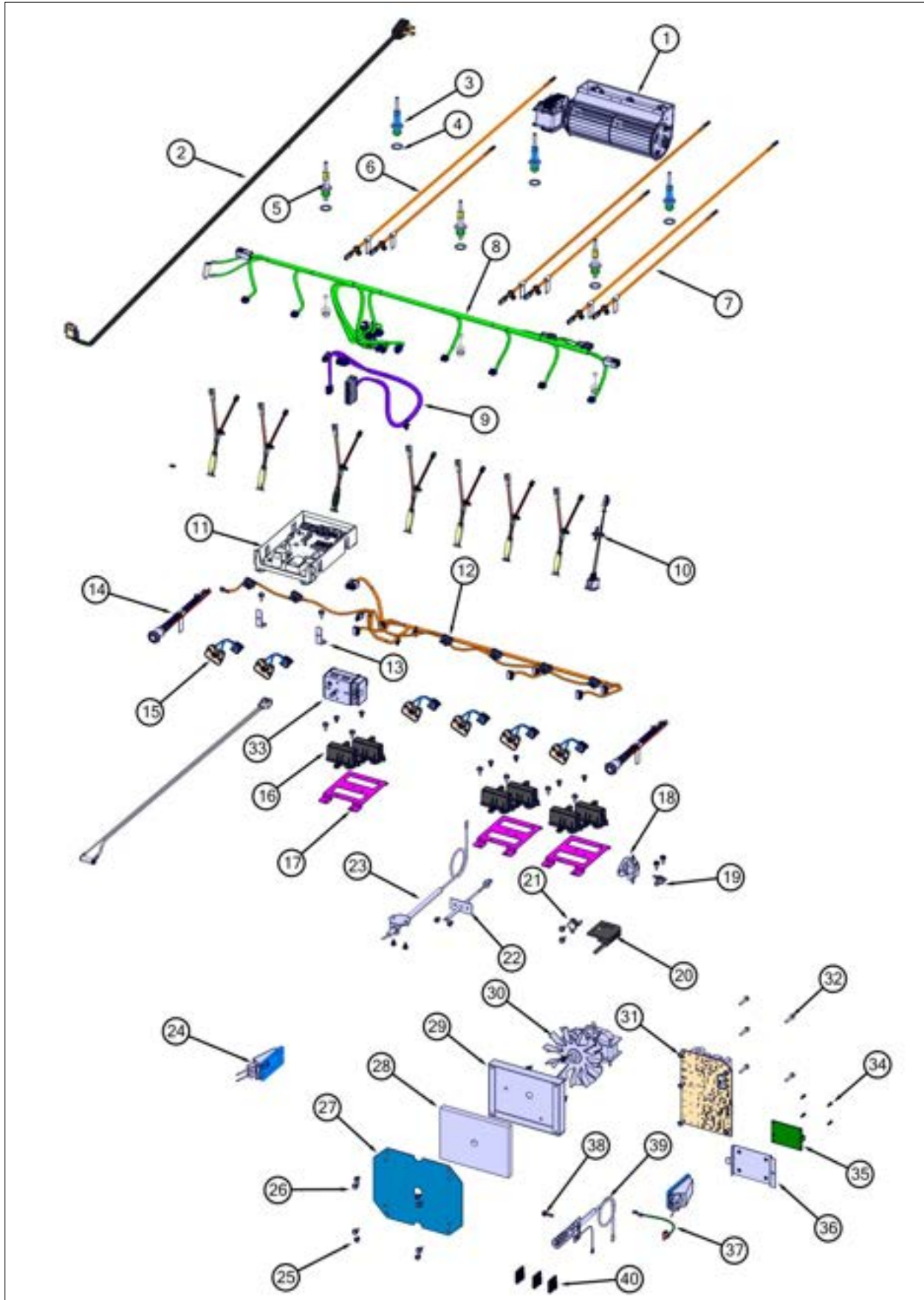


| Item | Part No. | Name | Qty | Uom | NOTES |
|------|-------------|---|-----|-----|-------|
| 1 | 003011-000 | DOOR HANDLE ENDCAP ASSY, LH (CHROME) | 1 | EA | |
| 2 | 006080-000 | 36" DOOR HANDLE, 35.5 | 1 | EA | |
| 3 | 003012-000 | DOOR HANDLE ENDCAP ASSY, RH (CHROME) | 1 | EA | |
| 4 | 062341-000 | NAMEPLATE, VIKING, 3.500", W/LOC PINS | 1 | EA | |
| 5 | 068449-000 | ASM, DOOR, OS, KIT, 36", SS | 1 | EA | |
| 5 | 068455-002 | ASM, DOOR, OS, KIT, 36", PAINTED BK | 1 | EA | |
| 5 | 068455-005 | ASM, DOOR, OS, KIT, 36", PAINTED GG | 1 | EA | |
| 5 | 068455-006 | ASM, DOOR, OS, KIT, 36", PAINTED WH | 1 | EA | |
| 5 | 068455-008 | ASM, DOOR, OS, KIT, 36", PAINTED BU | 1 | EA | |
| 5 | 068455-013 | ASM, DOOR, OS, KIT, 36", PAINTED CB | 1 | EA | |
| 5 | 068455-024 | ASM, DOOR, OS, KIT, 36", PAINTED AR | 1 | EA | |
| 5 | 068455-2801 | ASM, DOOR, OS, KIT, 36", PAINTED - Kalamata Red (KA) | 1 | EA | |
| 5 | 068455-2847 | ASM, DOOR, OS, KIT, 36", PAINTED - Blackforest Green (BF) | 1 | EA | |
| 5 | 068455-6180 | ASM, DOOR, OS, KIT, 36", PAINTED - Cypress Green (CY) | 1 | EA | |
| 5 | 068455-6258 | ASM, DOOR, OS, KIT, 36", PAINTED - Cast Black (CS) | 1 | EA | |
| 5 | 068455-6421 | ASM, DOOR, OS, KIT, 36", PAINTED - Vanilla Cream (VC) | 1 | EA | |
| 5 | 068455-6765 | ASM, DOOR, OS, KIT, 36", PAINTED - Bywater Blue (BW) | 1 | EA | |
| 5 | 068455-6797 | ASM, DOOR, OS, KIT, 36", PAINTED - Alluvial Blue (AB) | 1 | EA | |
| 5 | 068455-6871 | ASM, DOOR, OS, KIT, 36", PAINTED - San Marzano Red (SM) | 1 | EA | |
| 5 | 068455-7024 | ASM, DOOR, OS, KIT, 36", PAINTED - Pacific Grey (PG) | 1 | EA | |
| 5 | 068455-7070 | ASM, DOOR, OS, KIT, 36", PAINTED - Frost White (FW) | 1 | EA | |
| 5 | 068455-7585 | ASM, DOOR, OS, KIT, 36", PAINTED - Reduction Red (RE) | 1 | EA | |



| Item | Part No. | Name | Qty | Uom | NOTES |
|------|-------------|--|--------|-----|-------|
| 5 | 068455-7652 | ASM, DOOR, OS, KIT, 36", PAINTED -Artic Grey (AG) | 1 | EA | |
| 5 | 068455-7674 | ASM, DOOR, OS, KIT, 36", PAINTED - Damascus Grey (DG) | 1 | EA | |
| 5 | 068455-9178 | ASM, DOOR, OS, KIT, 36", PAINTED - Slate Blue (SB) | 1 | EA | |
| 6 | 045403-000 | BRACKET, MOUNTING, DOOR, ASM | 1 | EA | |
| 7 | 003860-000 | 10-18 x .500 FASTNR,SCR,HXWH,STL,ZPLT | 6 | EA | |
| 8 | 030823-000 | #10-32 PAN HEAD PHILLIPS MACHINE SCREW | 4 | EA | |
| 9 | 004907-000 | STEEL FINISHING PLUG, NICKEL PLTD 25/64" HOLE | 4 | EA | |
| 10 | pd020073 | SRW #10 X 24 X 3/8 WAFER HD TYPE23 | 2 | EA | |
| 11 | 004526-000 | 10 x 1/2 PH, NPLT, TAPPING SCREW | 6 | EA | |
| 12 | 025099-000 | INNER DOOR GLASS, 30" | 1 | EA | |
| 13 | 070671-000 | BRACKET, GLASS, ID | 1 | EA | |
| 14 | 046000-000 | HINGE, NUOVA STAR, BLUE | 2 | EA | |
| 15 | 046030-000 | RETAINER, INSL, 36" INSIDE | 1 | EA | |
| 16 | 046051-000 | INSULATION, LINER, DOOR, 36" | 1 | EA | |
| 17 | PD020063 | SCREW-#8(A) X 3/8"PH WFR HD/BK OXID | 4 | EA | |
| 18 | PD020033 | SRW-#10-24X1/2"T(23)PH.WFR HD (NKL) | 3 | EA | |
| 19 | 043688-402 | PNL,LINER, WA, 36" BK | 1 | EA | |
| 20 | 046651-000 | SCREW, TRILOBE, 10-32, TRUSS, PH, BLACK | 2 | EA | |
| 21 | 061691-000 | RETAINER, INSULATION, DOOR, 36" | 1 | EA | |
| 22 | PB070014 | DOOR GLASS SEAL STRIP - WINDOW DRS. | 4.88ft | EA | |
| 23 | 062384-000 | INSULATION, DOOR, SIDE, SUPERWOOL, 0.25", VDR5, 36 | 2 | EA | |
| 24 | 062380-000 | INSULATION, DOOR, TOP, SUPERWOOL, 0.25", VDR5 | 1 | EA | |

Electrical View



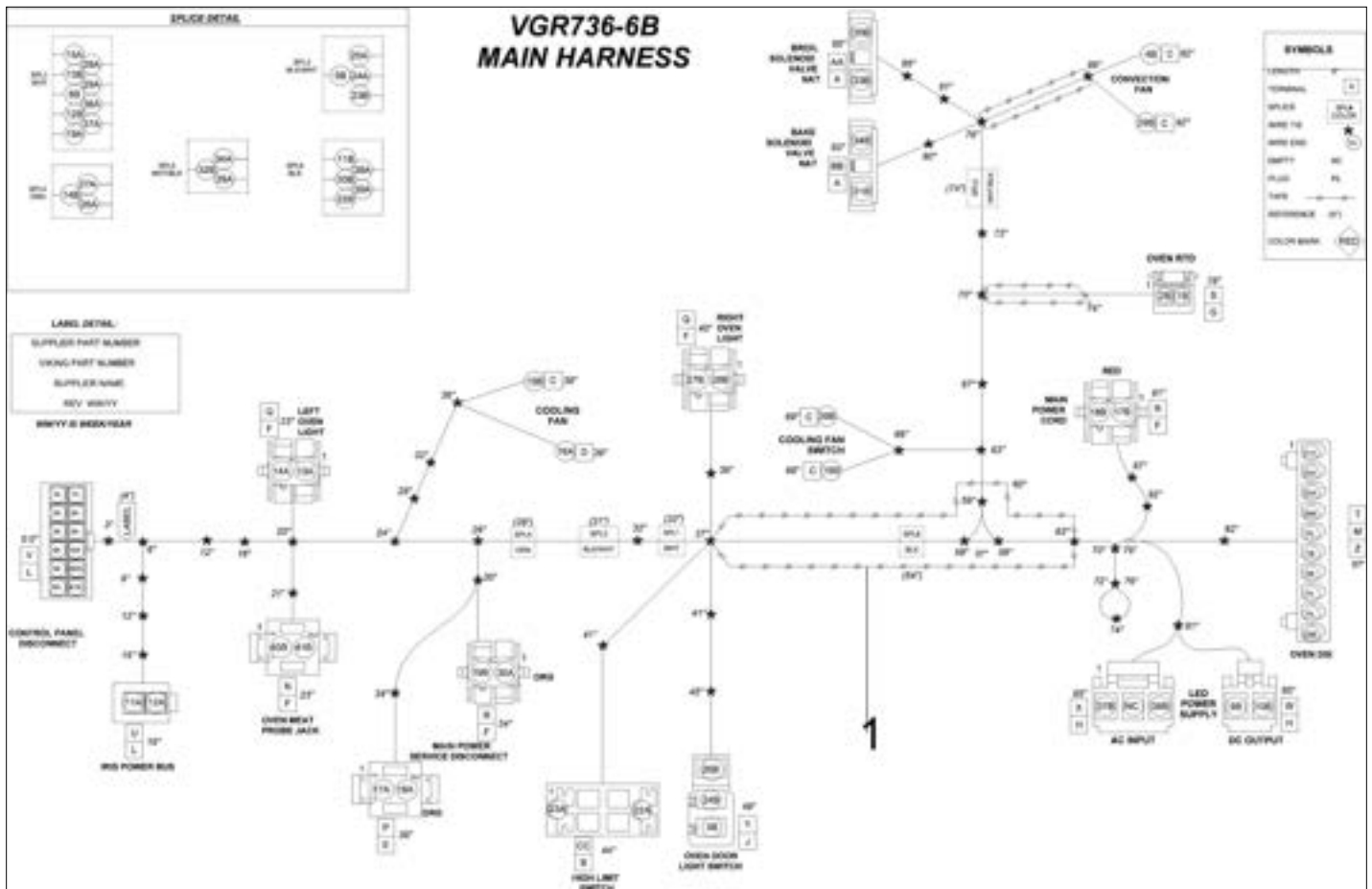


| Item | Part No. | Name | Qty | Uom | NOTES |
|------|------------|--|-----|-----|-------|
| 1 | 019959-000 | FAN,COOLING,DUAL,120VX180 (51343) | 1 | EA | |
| 2 | 044747-000 | CORD, SUPPLY, CORD | 1 | EA | |
| 3 | 066808-000 | ELECTRODE , ASM, D | 3 | EA | |
| 4 | 045932-000 | WASHER, ELECTRODE | 6 | EA | |
| 5 | 066809-000 | ELECTRODE, ASM E | 3 | EA | |
| 6 | 058659-604 | HARN, VGR5, ELEC, BURN, REAR | 3 | EA | |
| 7 | 058659-603 | HARN, VGR5, ELEC, BURN, FRNT | 3 | EA | |
| 8 | 061074-000 | HARN, VGR7366B, CP | 1 | EA | |
| 9 | 063263-000 | GARN, 7 SERIES, ULC | 1 | EA | |
| 10 | 046283-000 | SWITCH, LIGHTS, ACCENT W/CONN | 1 | EA | |
| 11 | 062885-501 | CNTRL, MODULE, ULC | 1 | EA | |
| 12 | 061253-000 | HARN, 366B, EGRID | 1 | EA | |
| 13 | 064541-000 | BKT, MNTG, FR, ULC, VDR7/VGR7 | 2 | EA | |
| 14 | 044195-000 | SWITCH, PB-LT, 5WIRE, ASSY | 2 | EA | |
| 15 | 061211-000 | SWITCH, VALVE, SPST, 2 PIN CON | 6 | EA | |
| 16 | 062214-000 | EGRID, REMOTE MOUNT, 120VAC | 6 | EA | |
| 17 | 064543-000 | BKT, MNTG, IRIS, VDR7/VGR7 | 3 | EA | |
| 18 | 030813-000 | SWITCH, TSTAT, SPDT | 1 | EA | |
| 19 | PJ030022 | BI-METAL THERMOSTAT, 115 DEGREES (FAN SWITCH) | 1 | EA | |
| 20 | 048347-000 | SWITCH, SPDT, DOOR, STRAIGHT TABS | 1 | EA | |
| 21 | 048014-000 | SWITCH, LIM, HIGH, 90 DEG C | 1 | EA | |
| 22 | PE050206 | RTD THERMOSTAT PROBE | 1 | EA | |
| 23 | 043615-000 | ASSEMBLY, ELECTRODE | 1 | EA | |
| 24 | 068653-601 | LIGHT, 120V/25W, G9, HALOGEN, SIDE | 2 | EA | |
| 25 | 037304-000 | FASTENER, PNH, TORX, AB, PSVD, WAX | 16 | EA | |
| 26 | 003860-000 | 10-18 x .500 FASTNR,SCR,HXWH,STL,ZPLT | 12 | EA | |
| 27 | 021199-000 | COVER, BOX, INSULATION | 1 | EA | |



| Item | Part No. | Name | Qty | Uom | NOTES |
|------|------------|--|-----|-----|-------|
| 28 | PB070208 | CONVECTION FAN INSULATION | 1 | EA | |
| 29 | 031735-000 | BOX, INSUL., FAN | 1 | EA | |
| 30 | 066367-000 | MOTOR, CONV, 120V | 1 | EA | |
| 31 | 043453-000 | MODULE, DSI | 1 | EA | |
| 32 | M0211021 | SCREW-SM | 5 | EA | |
| 33 | 065702-579 | TSTAT, SMPS, ELEC, 2-POS | 1 | EA | |
| 34 | 045594-000 | SCREW, SHCS, NO.4-40 X 3/8, SS | 4 | EA | |
| 35 | 063636-000 | PCB, POWER, TERMINATION (NON-SERVICEABLE) | 1 | EA | |
| 36 | 045774-000 | SHELF, SUPPLY, POWER, ASSY | 1 | EA | |
| 37 | 043994-000 | WIRE, GROUND, 5" | 1 | EA | |
| 38 | M0238731 | SCREW-TF | 1 | EA | |
| 39 | 043657-000 | ELECTRODE W/LEAD, BAKE, ASSY | 1 | EA | |
| 40 | 049878-000 | CORD, CLIP, ADHESIVE | 5 | EA | |

Harness View





| Item | Part No. | Name | Qty | Uom | NOTES |
|------|------------|----------------------|-----|-----|-------|
| 1 | 053599-000 | HARN, VGR7366B, MAIN | 1 | EA | |



Appendix A:Pages Index

| | |
|----------------------------|---|
| Base View | 1 |
| Control View | 2 |
| Decor View | 3 |
| Door View | 6 |
| Electrical View | 7 |
| Gas Asm View | 4 |
| Harness View | 8 |
| Surface Cooking View | 5 |



Appendix B:Parts Index

| | | | |
|-------------|---------------|-------------|---|
| 002884-000 | 4 | 042323-2847 | 3 |
| 003011-000 | 6 | 042323-6180 | 3 |
| 003012-000 | 6 | 042323-6258 | 3 |
| 003801-000 | 3 | 042323-6421 | 3 |
| 003860-000 | 1, 3, 5, 6, 7 | 042323-6765 | 3 |
| 004526-000 | 6 | 042323-6797 | 3 |
| 004907-000 | 6 | 042323-6871 | 3 |
| 005536-000 | 1 | 042323-7024 | 3 |
| 006080-000 | 6 | 042323-7070 | 3 |
| 008026-000 | 1 | 042323-7585 | 3 |
| 009005-000 | 1 | 042323-7652 | 3 |
| 009112-000 | 4 | 042323-7674 | 3 |
| 012438-000 | 1 | 042323-9178 | 3 |
| 013580-402 | 1 | 042339-000 | 1 |
| 014747-000 | 1 | 042343-000 | 1 |
| 019959-000 | 7 | 042346-000 | 1 |
| 020409-000 | 1 | 042347-000 | 1 |
| 020412-000 | 1 | 042350-000 | 5 |
| 020604-000 | 1 | 042372-000 | 3 |
| 021199-000 | 7 | 042375-000 | 3 |
| 025099-000 | 6 | 042543-000 | 3 |
| 030813-000 | 7 | 042545-000 | 5 |
| 030823-000 | 6 | 042741-000 | 5 |
| 031313-000 | 5 | 042742-000 | 5 |
| 031445-402 | 1 | 042785-000 | 5 |
| 031735-000 | 7 | 043276-000 | 4 |
| 033668-000 | 1 | 043453-000 | 7 |
| 034927-000 | 3 | 043615-000 | 7 |
| 034928-000 | 3 | 043657-000 | 7 |
| 037304-000 | 1, 7 | 043675-000 | 4 |
| 040736-000 | 1 | 043688-402 | 6 |
| 042117-000 | 3 | 043699-402 | 1 |
| 042287-000 | 3 | 043730-000 | 1 |
| 042323-002 | 3 | 043746-000 | 3 |
| 042323-005 | 3 | 043800-000 | 1 |
| 042323-006 | 3 | 043994-000 | 7 |
| 042323-008 | 3 | 044044-000 | 1 |
| 042323-013 | 3 | 044178-000 | 3 |
| 042323-024 | 3 | 044195-000 | 7 |
| 042323-2801 | 3 | 044321-000 | 4 |
| | | 044637-000 | 4 |



| | | | |
|------------|------|-------------|---|
| 044638-000 | 4 | 049551-008 | 3 |
| 044686-000 | 4 | 049551-013 | 3 |
| 044688-000 | 4 | 049551-024 | 3 |
| 044691-000 | 4 | 049551-2801 | 3 |
| 044747-000 | 7 | 049551-2847 | 3 |
| 044937-000 | 2 | 049551-6180 | 3 |
| 045060-000 | 1 | 049551-6258 | 3 |
| 045403-000 | 6 | 049551-6421 | 3 |
| 045528-000 | 1 | 049551-6765 | 3 |
| 045548-000 | 1 | 049551-6797 | 3 |
| 045550-000 | 1 | 049551-6871 | 3 |
| 045551-000 | 1 | 049551-7024 | 3 |
| 045594-000 | 7 | 049551-7070 | 3 |
| 045774-000 | 7 | 049551-7585 | 3 |
| 045932-000 | 7 | 049551-7652 | 3 |
| 046000-000 | 6 | 049551-7674 | 3 |
| 046019-000 | 1 | 049551-9178 | 3 |
| 046030-000 | 6 | 049552-002 | 3 |
| 046051-000 | 6 | 049552-005 | 3 |
| 046065-000 | 1 | 049552-006 | 3 |
| 046119-000 | 4 | 049552-008 | 3 |
| 046184-000 | 4 | 049552-013 | 3 |
| 046187-000 | 1 | 049552-024 | 3 |
| 046283-000 | 7 | 049552-2801 | 3 |
| 046399-000 | 4 | 049552-2847 | 3 |
| 046409-000 | 1 | 049552-6180 | 3 |
| 046651-000 | 1, 6 | 049552-6258 | 3 |
| 046677-000 | 1 | 049552-6421 | 3 |
| 046935-000 | 1 | 049552-6765 | 3 |
| 046964-000 | 4 | 049552-6797 | 3 |
| 048014-000 | 7 | 049552-6871 | 3 |
| 048017-402 | 5 | 049552-7024 | 3 |
| 048031-000 | 4 | 049552-7070 | 3 |
| 048048-000 | 1 | 049552-7585 | 3 |
| 048188-000 | 5 | 049552-7652 | 3 |
| 048347-000 | 7 | 049552-7674 | 3 |
| 049499-000 | 1 | 049552-9178 | 3 |
| 049534-000 | 5 | 049629-000 | 1 |
| 049551-002 | 3 | 049744-000 | 5 |
| 049551-005 | 3 | 049745-000 | 5 |
| 049551-006 | 3 | 049746-000 | 5 |



| | | | |
|-------------|---|-------------|------|
| 049753-000 | 5 | 064543-000 | 7 |
| 049878-000 | 7 | 064635-000 | 1 |
| 049964-000 | 5 | 065702-579 | 7 |
| 050267-000 | 1 | 066105-000 | 4 |
| 050794-000 | 1 | 066169-000 | 4 |
| 051541-000 | 4 | 066170-000 | 5 |
| 052259-000 | 5 | 066171-000 | 4 |
| 052260-000 | 5 | 066172-000 | 4 |
| 052427-000 | 3 | 066177-000 | 4 |
| 052632-000 | 1 | 066210-000 | 1, 1 |
| 053357-000 | 4 | 066225-402 | 3 |
| 053599-000 | 8 | 066367-000 | 7 |
| 054057-000 | 1 | 066475-000 | 5 |
| 056013-000 | 1 | 066808-000 | 7 |
| 056256-000 | 4 | 066809-000 | 7 |
| 056434-000 | 4 | 067030-000 | 4 |
| 057686-000 | 3 | 067118-2544 | 2 |
| 058147-000 | 5 | 068449-000 | 6 |
| 058659-603 | 7 | 068455-002 | 6 |
| 058659-604 | 7 | 068455-005 | 6 |
| 060591-000 | 1 | 068455-006 | 6 |
| 061041-000 | 2 | 068455-008 | 6 |
| 061074-000 | 7 | 068455-013 | 6 |
| 061090-501 | 2 | 068455-024 | 6 |
| 061211-000 | 7 | 068455-2801 | 6 |
| 061224-000 | 4 | 068455-2847 | 6 |
| 061225-000 | 4 | 068455-6180 | 6 |
| 061253-000 | 7 | 068455-6258 | 6 |
| 061691-000 | 6 | 068455-6421 | 6 |
| 062214-000 | 7 | 068455-6765 | 6 |
| 062341-000 | 6 | 068455-6797 | 6 |
| 062380-000 | 6 | 068455-6871 | 6 |
| 062384-000 | 6 | 068455-7024 | 6 |
| 062885-501 | 7 | 068455-7070 | 6 |
| 062991-000 | 1 | 068455-7585 | 6 |
| 063263-000 | 7 | 068455-7652 | 6 |
| 063295-000 | 4 | 068455-7674 | 6 |
| 063636-000 | 7 | 068455-9178 | 6 |
| 063640-000 | 2 | 068653-601 | 7 |
| 063654-2846 | 2 | 070671-000 | 6 |
| 064541-000 | 7 | A2002654 | 3 |



| | |
|----------|------|
| A2004428 | 1 |
| A2004429 | 1 |
| A2005525 | 1 |
| A2008467 | 1 |
| G3001876 | 4 |
| M0211021 | 7 |
| M0238731 | 7 |
| PB020126 | 4 |
| PB020127 | 4 |
| PB020191 | 4 |
| PB020198 | 4 |
| PB040050 | 4 |
| PB040178 | 4 |
| PB040192 | 4 |
| PB040213 | 4 |
| PB070014 | 6 |
| PB070208 | 7 |
| PC030007 | 1 |
| PD010012 | 4 |
| PD020010 | 1, 5 |
| PD020032 | 3 |
| PD020033 | 6 |
| PD020046 | 2 |
| PD020063 | 6 |
| PD020068 | 5 |
| PD020269 | 2 |
| PD030018 | 4 |
| PD040005 | 1 |
| PE050206 | 7 |
| PJ030022 | 7 |
| pb040026 | 4 |
| pd020073 | 6 |
| pd020232 | 3 |
| pe070069 | 3 |