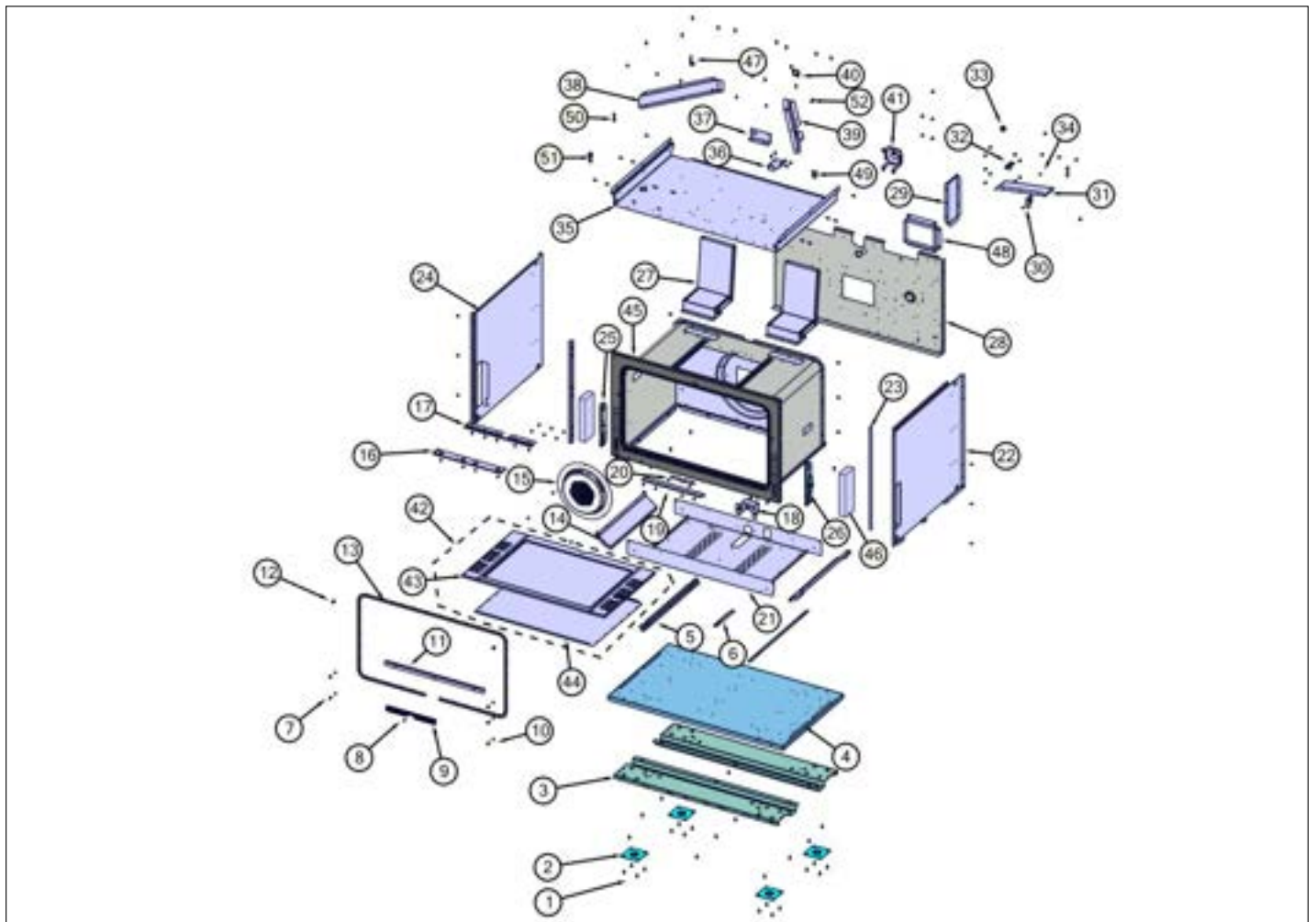


VGR73626BSS01

Base View	1
Gas Asm View	2
Surface Cooking View	3
Control View	4
Decor View	5
Electrical View	6
Door View	7
Harness View	8
Appendix A:Pages Index	A
Appendix B:Parts Index	B

Base View





Item	Part No.	Name	Qty	Uom	NOTES
1	003860-000	10-18 x .500 FASTNR,SCR,HXWH,STL,ZPLT	38	EA	
2	PC030007	LEG PLATE - 3/4" THREADED HOLE	4	EA	
3	046935-000	BRACKET, LEG, OFFSET (NON- SERVICEABLE PART)	2	EA	
4	020604-000	BASE, RANGE	1	EA	
5	A2004429	OVEN BOTTOM INSUL. BRACE (VGSC306)	2	EA	
6	050794-000	BRACKET, HOLD-DOWN, BOX, FIRE	1	EA	
7	046651-000	SCREW, TRILOBE, 10-32, TRUSS, PH, BLACK	5	EA	
8	037304-000	FASTENER, PNH, TORX, AB, PSVD, WAX	23	EA	
9	009005-000	GASKET CLIP RAW	1	EA	
10	052632-000	WASHER, FLAT, PTFE, NO.10	5	EA	
11	050267-000	BRACKET, SUPPORT, BOTTOM, OVEN, 30"/36"	1	EA	
12	043800-000	BUMPER, RBR, BLK	2	EA	
13	046019-000	GASKET, LINER, AG, ASM 36"	1	EA	
14	014747-000	BRACKET, BNR, SIDE, PORCELAIN	2	EA	
15	013580-402	CONV COVER W/BK PORC	1	EA	
16	020409-000	BRACKET, SPRT, FR, I/R BROILER	1	EA	
17	020412-000	BRACKET, SPRT, REAR, I/R BROILER	1	EA	
18	040736-000	BRKT, ORF	1	EA	
19	031445-402	BRACE, OVEN, BOTTOM, BACK W/BK PORC	1	EA	
20	A2004428	REAR BOTTOM BRCKT (VGSC306)	1	EA	
21	043730-000	OVEN CVTY, BTM, 36"	1	EA	
22	042339-000	PANEL, INSL, RH	1	EA	
23	005536-000	TRIM	1	EA	
24	042343-000	PANEL, INSL, LH	1	EA	
25	045060-000	RECEIVER, HINGE, SLOW- CLOSE, UNDAMPENED	1	EA	

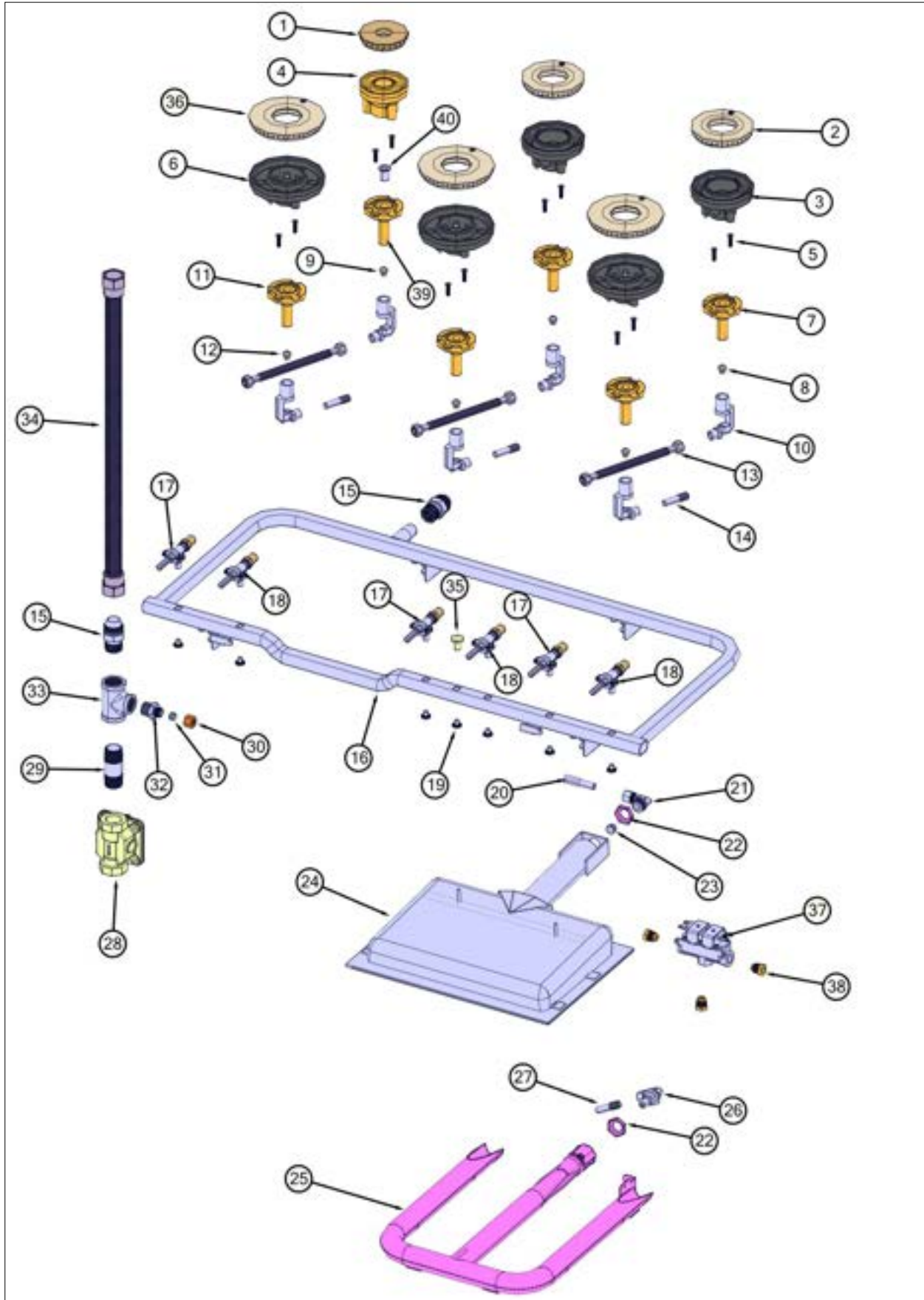


Item	Part No.	Name	Qty	Uom	NOTES
26	054057-000	RECEIVER, HINGE, SLOW-CLOSE, DAMPENED	1	EA	
27	062991-000	VENT FLUE, ASM	2	EA	
28	049499-000	PANEL, INSL, GRIDDLE, BACK, 36"	1	EA	
29	046187-000	SHIELD, WATER, DIVERTER	1	EA	
30	033668-000	BRACKET, DISCONNECT	1	EA	
31	049629-000	SHIELD, DIVERTER, WATER	1	EA	
32	012438-000	SWITCH, LIM, BRKT	1	EA	
33	PD040005	SNAP BUSHING - 7/8"	1	EA	
34	PD020010	10 X 3/8 GREEN GROUNDING SCREW	4	EA	
35	064635-000	PANEL, INSL, 36" TOP, VGR736	1	EA	
36	046065-000	BRACKET, SWITCH, OVEN LIGHT	1	EA	
37	060591-000	BRACKET, SWITCH, LIMIT, HI	1	EA	
38	042346-000	DIVERTER, AIR, LH	1	EA	
39	042347-000	DIVERTER, AIR, RH	1	EA	
40	045550-000	SADDLE, WIRE, EDGE	1	EA	
41	046409-000	BRCKT, RETAINER, REGULATOR	1	EA	
42	066210-000	ASM, BOTTOM, CABITY, OVEN, GAS, 36"	1	EA	
43	066210-000	ASM, BOTTOM, CABITY, OVEN, GAS, 36"	1	EA	
44	A2005525	OVEN BOTTOM HEAT SHIELD	1	EA	
NI	008026-000	#6-20 HEX WASHER SS SCREW	12	EA	
45	043699-402	FRAME, FR, WELDMENT, 36" BK	1	EA	
46	046677-000	INSULATION, FBGL, RECEIVER, DAMPENING	2	EA	
47	048048-000	BRKT, SWITCH, LIM, HIGH	1	EA	
48	A2008467	INSULATION SHIELD	1	EA	
49	045548-000	CLIP, ROUTING, WIRE	12	EA	
50	045528-000	STANDOFF, LOCKING CLIP	2	EA	
51	045551-000	CLIP, HARNESS, STANDOFF	1	EA	



Item	Part No.	Name	Qty	Uom	NOTES
NI	056013-000	INSULATION, FIBERGLASS, ROLL, 3" THK, 20" WIDE X 45' LONG	1	EA	
52	044044-000	GROMMET, SWITCH, DOOR, RBR	1	EA	

Gas Asm View



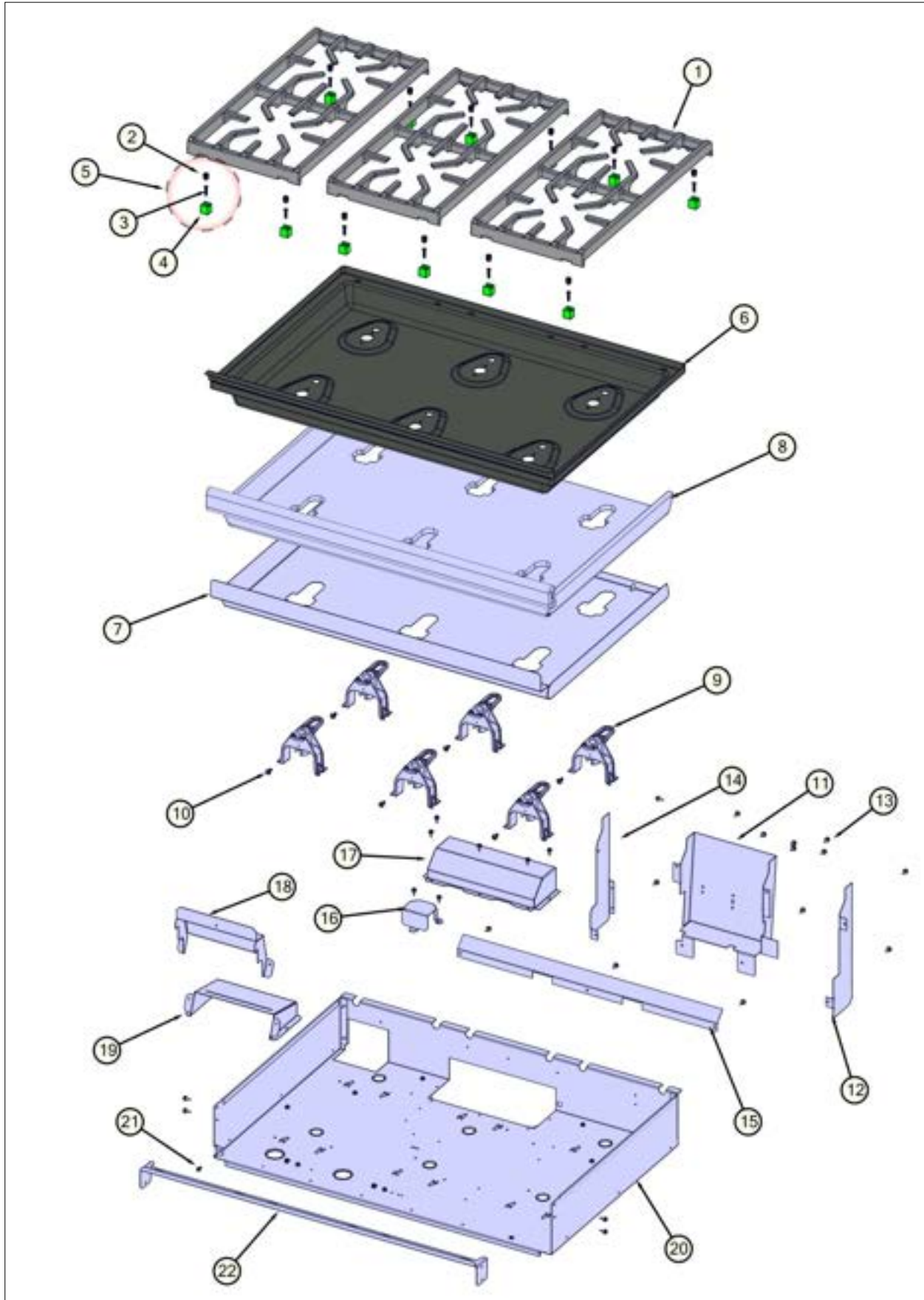


Item	Part No.	Name	Qty	Uom	NOTES
1	066174-000	BURNER, HEAD, C	1	EA	
2	066169-000	BURNER, HEAD, D	2	EA	
3	066105-000	BASE, BNR, D	2	EA	
4	066177-000	BURNER, BASE, C-SIZE	1	EA	
5	046964-000	SCREW, 10-32 X 3/4", CTSK, BLACK	12	EA	
6	066173-000	BASE, BNR, E-SIZE	3	EA	
7	066171-000	VENTURI, D NAT, D LP, FLANGE, BNR	2	EA	
8	066803-000	ORIFICE, BNR, STD, 1.70MM	2	EA	
8	066806-000	ORIFICE, BNR, STD 1.07MM	2	EA	
9	066805-000	ORIFICE, BNR, STD, 1.22MM	1	EA	
9	066807-000	ORIFICE, BNR, STD .813MM	1	EA	
10	063295-000	HOLDER, JET, BURNER	6	EA	
11	067030-000	VENTURI, E NAT, FLANGE, BNR	3	EA	
11	067031-000	VENTURI, E LP, FLANGE, BNR - LP	3	EA	
12	066802-000	ORIFICE, BNR, STD, 2.18MM	3	EA	
12	066804-000	ORIFICE, BNR, STD 1.32MM	3	EA	
13	046399-000	TUBING, 3/4 FLEX, SST, 20	3	EA	
14	PB020191	15" FLEX TUBE	3	EA	
15	044321-000	FITTING, ADAPTOR, 3/4" FLEX TUBING	2	EA	
16	056434-000	MANIFOLD, GAS, 36", ASM	1	EA	
17	061225-000	VALVE, GAS, C & D-BNR, NAT	3	EA	
17	061227-000	VALVE, GAS, C & D-BNR, LP	3	EA	
18	061224-000	VALVE, GAS, E-BNR, NAT	3	EA	
18	061226-000	VALVE, GAS, E-BNR, LP	3	EA	
19	PD010012	VALVE BOLT 1/4-20 UNC-2B 5/16" M.S.	7	EA	
20	074851-000	TUBING, FLEX, FLR/COMP, W/FITTINGS, 15"	1	EA	
21	PB040178	90 DEGREE ORIFICE FITTING (VGSC306)	1	EA	
22	PD030018	PALNUT - 3/4-16	2	EA	
23	pb040026	IR BURNER ORIFICE - #48 NAT.	1	EA	



Item	Part No.	Name	Qty	Uom	NOTES
23	PB040027	IR BUR.SPUD ORF. - #56 LP	1	EA	
24	G3001876	IR BURNER ASSY (VGSC/RC) N/S	1	EA	
25	043276-000	BURNER, BAKE, ASM, 36"	1	EA	
25	044236-000	BURNER, BAKE, ASM, 36"- LP	1	EA	
26	048031-000	90 DEG ORIFICE FITTING, #39 DRILL	1	EA	
26	048028-000	90 DEG ORIFICE FITTING #51 DRILL	1	EA	
27	PB020127	3/8" S.S. FLEX TUBING 20" (DGCU)	1	EA	
28	046119-000	PRESSURE REGULATOR (NAT)	1	EA	
28	046120-000	REGULATOR, PRSS, 3/4" INLET, 3/4" OUTLET (LP)	1	EA	
29	044637-000	NIPPLE, PIPE, 2-1/2", 3/4" NPTM TO 3/4" NPTM	1	EA	
30	PB040213	3/8" COMPRESSION NUT (DGCU)	1	EA	
31	PB040192	3/8" CC FERREL (DGCU)	1	EA	
32	044691-000	ADAPTOR, COMPRESSION, 1/2" NPTF TO 3/8" TUBE O.D.	1	EA	
33	044638-000	TEE, PIPE, 3/4" NPTF TO 1/2" NPTM	1	EA	
34	074854-000	TUBING, FLEX, FLR/COMP, W/FITTINGS, 20"	1	EA	
35	002884-000	MANIFOLD PLUG	1	EA	
36	066172-000	BURNER, HEAD, E	3	EA	
37	009112-000	VALVE, SOL, DOUBLE	1	EA	
38	PB040050	3/8"CC MALE COMP. FITTING W/FERRULE	3	EA	
39	044686-000	VENTURI, C NAT, C LP, FLANGE, BNR	1	EA	
39	067028-000	VENTURI, C NAT, C LP, FLANGE, BNR	1	EA	
40	051541-000	C VENTURI INSERT	1	EA	

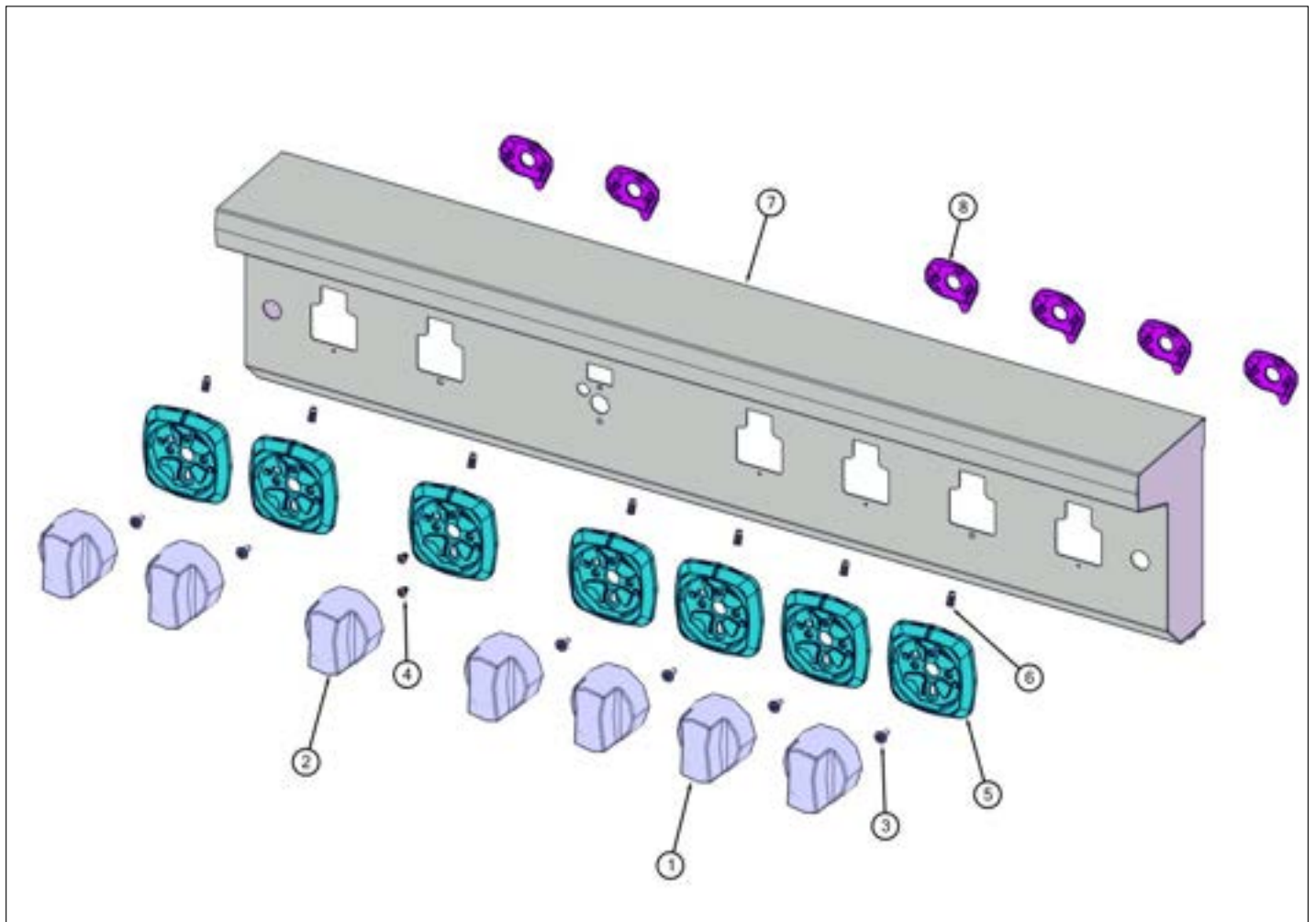
Surface Cooking View





Item	Part No.	Name	Qty	Uom	NOTES
1	042545-000	GRATE, CAST, 12"	3	EA	
2	052260-000	SILENCER, GRATE	12	EA	
3	049534-000	SCREW, 8-32 X 3/4, PHIL, FLAT	12	EA	
4	052259-000	SUPPORT, GRATE	12	EA	
5	058147-000	GRATE, LEG, ASSY, PHASE 2 (BLK)	12	EA	
<p>Comments for Part Num. 058147-000</p> <p>gboltz@VikingRange.com on Jun 6, 2016</p> <p>See parts bulletin 2016-03P Grate support changes</p>					
6	048017-402	PAN, BNR, SHIM, ASM, BLK	1	EA	
7	049745-000	TRAY, PNL, INSULATION, BURNER PAN, 36"	1	EA	
8	049746-000	INSULATION, LINER, BURNER PAN, 36"	1	EA	
9	066170-000	SUPPORT, HLDR, JET	6	EA	
10	PD020068	' #10 - 32 X 1/2"TRUSS. PHIL. M.*SS*	6	EA	
11	042785-000	COVER, BLO	1	EA	
12	042742-000	DIVERTER, BRKT, LH	1	EA	
13	003860-000	10-18 x .500 FASTNR,SCR,HXWH,STL,ZPLT	3	EA	
14	042741-000	DIVERTER, BRKT, RH	1	EA	
15	031313-000	DIVERTER, AIR 36	1	EA	
16	048188-000	BRACKET, TEE, PIPE	1	EA	
17	042350-000	COVER, FAN	1	EA	
18	049964-000	SHIELD, HEAT, HARNESS, TOP	1	EA	
19	049753-000	SHIELD, HEAT, HARNESS, BTM	1	EA	
20	066475-000	BOX, BNR, VGR7362	1	EA	
21	PD020010	10 X 3/8 GREEN GROUNDING SCREW	1	EA	
22	049744-000	BRACKET, MTG, 36" CONTROL PANEL	1	EA	

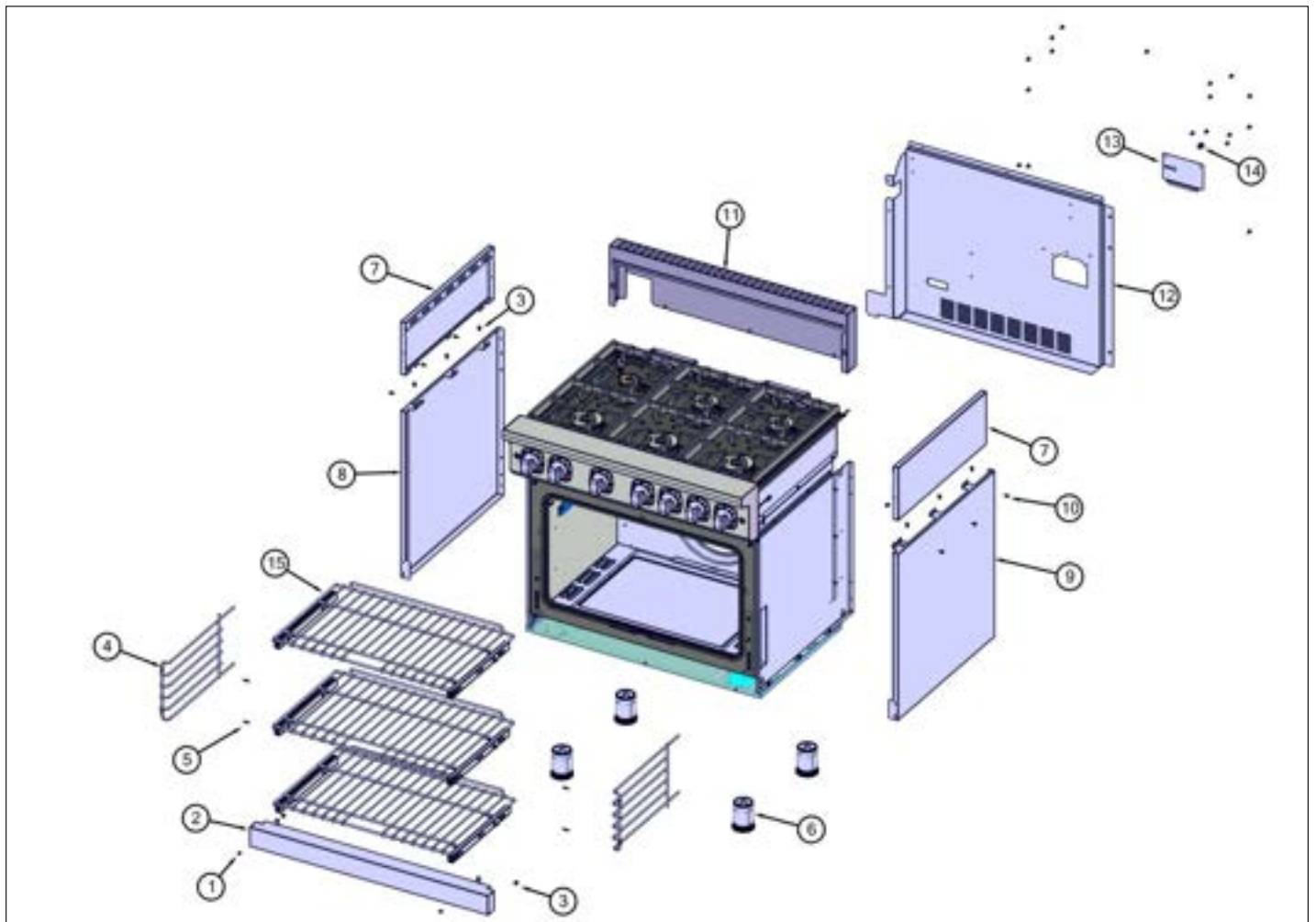
Control View





Item	Part No.	Name	Qty	Uom	NOTES
1	061041-000	KNOB, BURNER, ASSY (SEE 042558-000)	6	EA	
2	067118-2544	KNOB, THERMOSTAT, OVEN, A/G, W-GRAPHICS	1	EA	
3	PD020046	' #8 X 1/2 SCREWS	6	EA	
4	PD020269	#8 PAN HEAD SCREW	2	EA	
5	061090-501	BEZEL, ASSY, LED, SQUARE, LARGE	7	EA	
Comments for Part Num. 061090-501					
profixappliances@gmail.com on Feb 27, 2020					
SEE SERVICE BULLETIN TC-0126-SP REGARDING NEW BEZELS					
6	044937-000	LENS, COVER, LED, CLEAR	7	EA	
7	063654-2846	ASM, PANEL, CTRL, VGR73626B, W/GRAPHICS	1	EA	
8	063640-000	ADAPTER, BEZEL, LED	6	EA	

Decor View





Item	Part No.	Name	Qty	Uom	NOTES
1	PD020032	SRW-8(A)X3/8"PH.WFR HD 7/16DIA*NICL	2	EA	
2	042287-000	KICKPLATE, GAS & DUAL FUEL, 36"	1	EA	
2	042323-002	KICKPLATE, GAS & DUAL FUEL, 36" BK	1	EA	
2	042323-005	KICKPLATE, GAS & DUAL FUEL, 36" GG	1	EA	
2	042323-006	KICKPLATE, GAS & DUAL FUEL, 36" WH	1	EA	
2	042323-008	KICKPLATE, GAS & DUAL FUEL, 36" BU	1	EA	
2	042323-013	KICKPLATE, GAS & DUAL FUEL, 36" CB	1	EA	
2	042323-024	KICKPLATE, GAS & DUAL FUEL, 36" AR	1	EA	
2	042323-2801	KICKPLATE, GAS & DUAL FUEL, 36" Kalamata Red (KA)	1	EA	
2	042323-2847	KICKPLATE, GAS & DUAL FUEL, 36" Blackforest Green (BF)	1	EA	
2	042323-6180	KICKPLATE, GAS & DUAL FUEL, 36" Cypress Green (CY)	1	EA	
2	042323-6258	KICKPLATE, GAS & DUAL FUEL, 36" Cast Black (CS)	1	EA	
2	042323-6421	KICKPLATE, GAS & DUAL FUEL, 36" Vanilla Cream (VC)	1	EA	
2	042323-6765	KICKPLATE, GAS & DUAL FUEL, 36" Bywater Blue (BW)	1	EA	
2	042323-6797	KICKPLATE, GAS & DUAL FUEL, 36" Alluvial Blue (AB)	1	EA	
2	042323-6871	KICKPLATE, GAS & DUAL FUEL, 36" San Marzano Red (SM)	1	EA	
2	042323-7024	KICKPLATE, GAS & DUAL FUEL, 36" Pacific Grey (PG)	1	EA	
2	042323-7070	KICKPLATE, GAS & DUAL FUEL, 36" Frost White (FW)	1	EA	
2	042323-7585	KICKPLATE, GAS & DUAL FUEL, 36" Reduction Red (RE)	1	EA	
2	042323-7652	KICKPLATE, GAS & DUAL FUEL, 36" Artic Grey (AG)	1	EA	
2	042323-7674	KICKPLATE, GAS & DUAL FUEL, 36" Damascus Grey (DG)	1	EA	



Item	Part No.	Name	Qty	Uom	NOTES
2	042323-9178	KICKPLATE, GAS & DUAL FUEL, 36" Slate Blue (SB)	1	EA	
3	003801-000	SHOULDER SCREW, #10	10	EA	
4	066225-402	GUIDE, RACK, RH- BK	2	EA	
5	pd020232	#8 X 3/4" PH PAN HEAD TEK SCREW (BLACK OXIDE)	4	EA	
6	044178-000	RANGE, LEG, ADJUSTABLE	1	EA	
7	052427-000	COVER, OS, RH/LH UPPER	2	EA	
8	042372-000	COVER, OS, LH	1	EA	
8	049552-002	COVER, OS, LH, DECARB BK	1	EA	
8	049552-005	COVER, OS, LH, DECARB GG	1	EA	
8	049552-006	COVER, OS, LH, DECARB WH	1	EA	
8	049552-008	COVER, OS, LH, DECARB BU	1	EA	
8	049552-013	COVER, OS, LH, DECARB CB	1	EA	
8	049552-024	COVER, OS, LH, DECARB AR	1	EA	
8	049552-2801	OS Left Hand Cover - Kalamata Red (KA)	1	EA	
8	049552-2847	OS Left Hand Cover - Blackforest Green (BF)	1	EA	
8	049552-6180	OS Left Hand Cover - Cypress Green (CY)	1	EA	
8	049552-6258	OS Left Hand Cover - Cast Black (CS)	1	EA	
8	049552-6421	OS Left Hand Cover - Vanilla Cream (VC)	1	EA	
8	049552-6765	OS Left Hand Cover - Bywater Blue (BW)	1	EA	
8	049552-6797	OS Left Hand Cover - Alluvial Blue (AB)	1	EA	
8	049552-6871	OS Left Hand Cover - San Marzano Red (SM)	1	EA	
8	049552-7024	OS Left Hand Cover - Pacific Grey (PG)	1	EA	
8	049552-7070	OS Left Hand Cover - Frost White (FW)	1	EA	
8	049552-7585	OS Left Hand Cover - Reduction Red (RE)	1	EA	
8	049552-7652	OS Left Hand Cover -Artic Grey (AG)	1	EA	

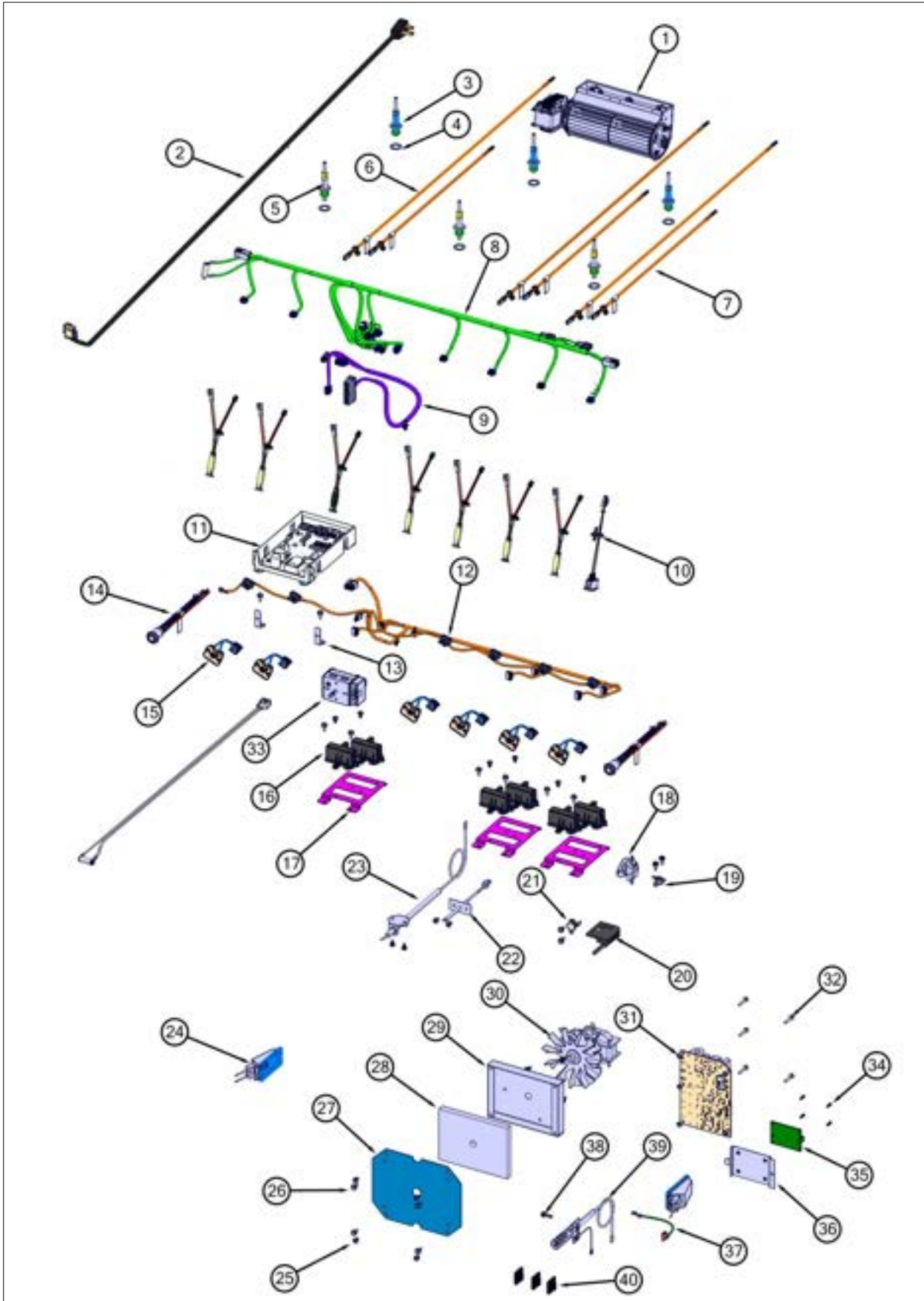


Item	Part No.	Name	Qty	Uom	NOTES
8	049552-7674	OS Left Hand Cover - Damascus Grey (DG)	1	EA	
8	049552-9178	OS Left Hand Cover - Slate Blue (SB)	1	EA	
9	042375-000	COVER, OS, RH	1	EA	
9	049551-002	COVER, OS, RH, DECARB BK	1	EA	
9	049551-005	COVER, OS, RH, DECARB GG	1	EA	
9	049551-006	COVER, OS, RH, DECARB WH	1	EA	
9	049551-008	COVER, OS, RH, DECARB BU	1	EA	
9	049551-013	COVER, OS, RH, DECARB CB	1	EA	
9	049551-024	COVER, OS, RH, DECARB AR	1	EA	
9	049551-2801	OS Right Hand Cover - Kalamata Red (KA)	1	EA	
9	049551-2847	OS Right Hand Cover - Blackforest Green (BF)	1	EA	
9	049551-6180	OS Right Hand Cover - Cypress Green (CY)	1	EA	
9	049551-6258	OS Right Hand Cover - Cast Black (CS)	1	EA	
9	049551-6421	OS Right Hand Cover - Vanilla Cream (VC)	1	EA	
9	049551-6765	OS Right Hand Cover - Bywater Blue (BW)	1	EA	
9	049551-6797	OS Right Hand Cover - Alluvial Blue (AB)	1	EA	
9	049551-6871	OS Right Hand Cover - San Marzano Red (SM)	1	EA	
9	049551-7024	OS Right Hand Cover - Pacific Grey (PG)	1	EA	
9	049551-7070	OS Right Hand Cover - Frost White (FW)	1	EA	
9	049551-7585	OS Right Hand Cover - Reduction Red (RE)	1	EA	
9	049551-7652	OS Right Hand Cover -Artic Grey (AG)	1	EA	
9	049551-7674	OS Right Hand Cover - Damascus Grey (DG)	1	EA	
9	049551-9178	OS Right Hand Cover - Slate Blue (SB)	1	EA	
10	003860-000	10-18 x .500 FASTNR,SCR,HXWH,STL,ZPLT	26	EA	



Item	Part No.	Name	Qty	Uom	NOTES
11	042117-000	TRIM, IS, VGR, 36"	1	EA	
12	042543-000	COVER, BACK, 36"	1	EA	
13	043746-000	PNL, ACCESS, W/HEYCO	1	EA	
14	pe070069	STRAIGHT-THRU BUSHING	1	EA	
15	057686-000	RACK, GLDE, 36", PRO ASSY	3	EA	
NI	A2002654	ANTI-TIP DEVICE (VDSC)	1	EA	
NI	034927-000	BRACKET, ANTI-TIP	1	EA	
Not Shown	NOTE	(FOR FLOOR MOUNT)		EA	
NI	034928-000	BRACKET, HOOK, ANTI-TIP	1	EA	
Not Shown	NOTE	(FOR FLOOR MOUNT)		EA	

Electrical View



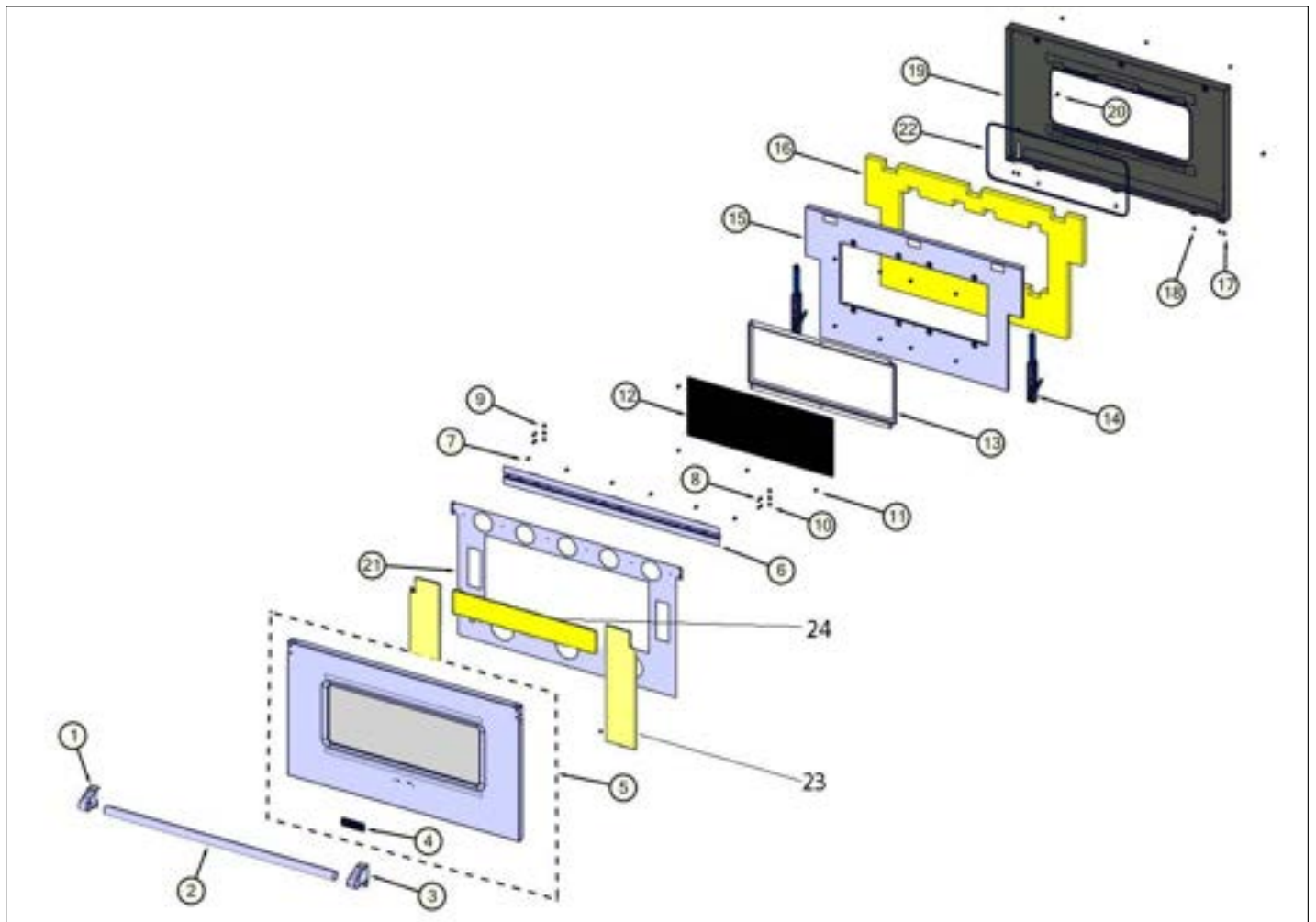


Item	Part No.	Name	Qty	Uom	NOTES
1	019959-000	FAN,COOLING,DUAL,120VX180 (51343)	1	EA	
2	044747-000	CORD, SUPPLY, CORD	1	EA	
3	066808-000	ELECTRODE , ASM, D	3	EA	
4	045932-000	WASHER, ELECTRODE	6	EA	
5	066809-000	ELECTRODE, ASM E	3	EA	
6	058659-604	HARN, VGR5, ELEC, BURN, REAR	3	EA	
7	058659-603	HARN, VGR5, ELEC, BURN, FRNT	3	EA	
8	061074-000	HARN, VGR7366B, CP	1	EA	
9	063263-000	GARN, 7 SERIES, ULC	1	EA	
10	046283-000	SWITCH, LIGHTS, ACCENT W/CONN	1	EA	
11	062885-501	CNTRL, MODULE, ULC	1	EA	
12	061253-000	HARN, 366B, EGRID	1	EA	
13	064541-000	BKT, MNTG, FR, ULC, VDR7/VGR7	2	EA	
14	044195-000	SWITCH, PB-LT, 5WIRE, ASSY	2	EA	
15	061211-000	SWITCH, VALVE, SPST, 2 PIN CON	6	EA	
16	062214-000	EGRID, REMOTE MOUNT, 120VAC	6	EA	
17	064543-000	BKT, MNTG, IRIS, VDR7/VGR7	3	EA	
18	030813-000	SWITCH, TSTAT, SPDT	1	EA	
19	PJ030022	BI-METAL THERMOSTAT, 115 DEGREES (FAN SWITCH)	1	EA	
20	048347-000	SWITCH, SPDT, DOOR, STRAIGHT TABS	1	EA	
21	048014-000	SWITCH, LIM, HIGH, 90 DEG C	1	EA	
22	PE050206	RTD THERMOSTAT PROBE	1	EA	
23	043615-000	ASSEMBLY, ELECTRODE	1	EA	
24	005311-000	LIGHT, 120V/25W G9 HALOGEN SIDE	2	EA	
25	037304-000	FASTENER, PNH, TORX, AB, PSVD, WAX	16	EA	
26	003860-000	10-18 x .500 FASTNR,SCR,HXWH,STL,ZPLT	12	EA	
27	021199-000	COVER, BOX, INSULATION	1	EA	



Item	Part No.	Name	Qty	Uom	NOTES
28	PB070208	CONVECTION FAN INSULATION	1	EA	
29	031735-000	BOX, INSUL., FAN	1	EA	
30	066367-000	MOTOR, CONV, 120V	1	EA	
31	043453-000	MODULE, DSI	1	EA	
32	M0211021	SCREW-SM	5	EA	
33	065702-579	TSTAT, SMPS, ELEC, 2-POS	1	EA	
34	045594-000	SCREW, SHCS, NO.4-40 X 3/8, SS	4	EA	
35	063636-000	PCB, POWER, TERMINATION (NON-SERVICEABLE)	1	EA	
36	045774-000	SHELF, SUPPLY, POWER, ASSY	1	EA	
37	043994-000	WIRE, GROUND, 5"	1	EA	
38	M0238731	SCREW-TF	1	EA	
39	043657-000	ELECTRODE W/LEAD, BAKE, ASSY	1	EA	
40	049878-000	CORD, CLIP, ADHESIVE	5	EA	

Door View



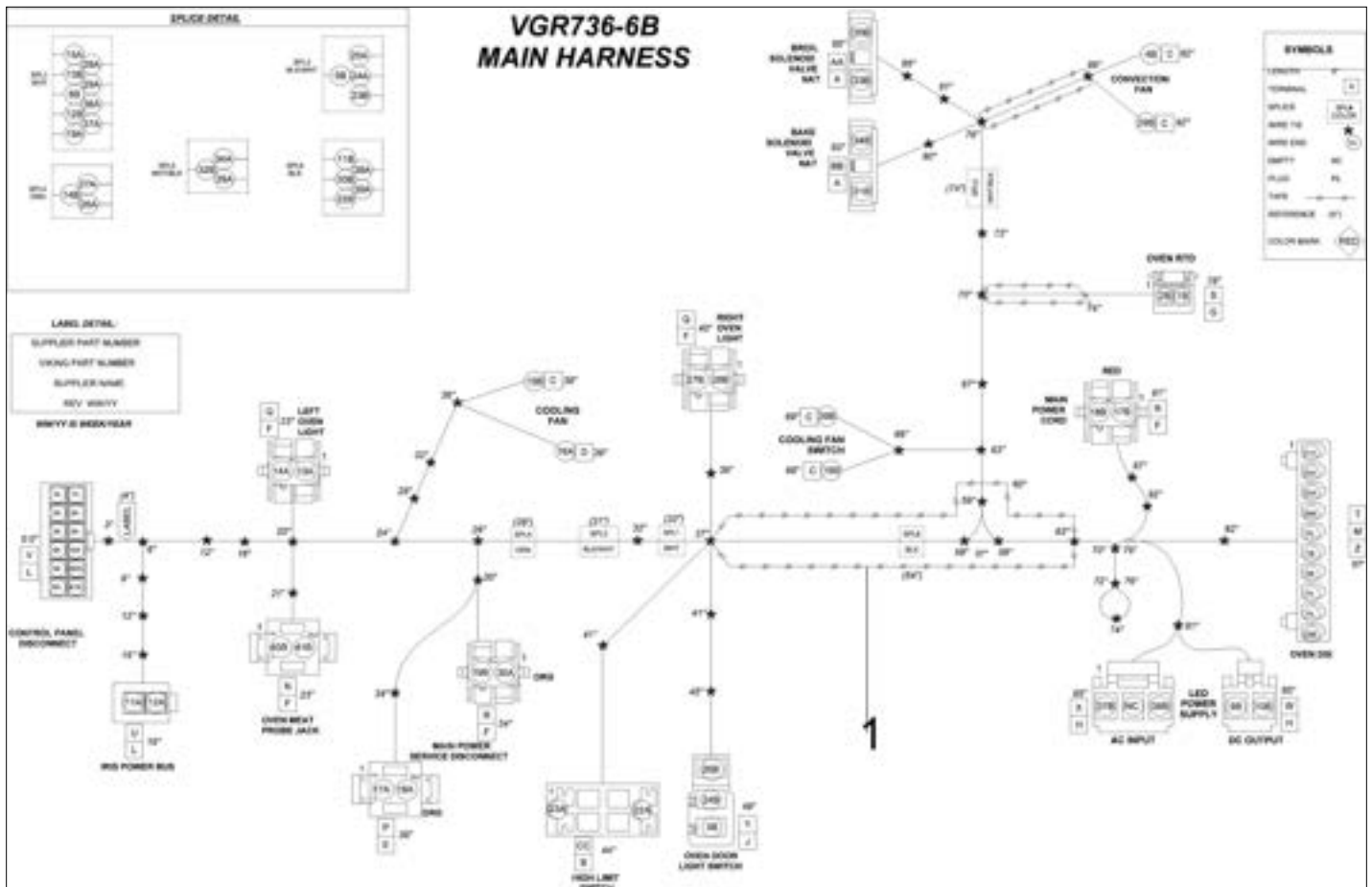


Item	Part No.	Name	Qty	Uom	NOTES
1	003011-000	DOOR HANDLE ENDCAP ASSY, LH (CHROME)	1	EA	
2	006080-000	36" DOOR HANDLE, 35.5	1	EA	
3	003012-000	DOOR HANDLE ENDCAP ASSY, RH (CHROME)	1	EA	
4	062341-000	NAMEPLATE, VIKING, 3.500", W/LOC PINS	1	EA	
5	068449-000	ASM, DOOR, OS, KIT, 36", SS	1	EA	
5	068455-002	ASM, DOOR, OS, KIT, 36", PAINTED BK	1	EA	
5	068455-005	ASM, DOOR, OS, KIT, 36", PAINTED GG	1	EA	
5	068455-006	ASM, DOOR, OS, KIT, 36", PAINTED WH	1	EA	
5	068455-008	ASM, DOOR, OS, KIT, 36", PAINTED BU	1	EA	
5	068455-013	ASM, DOOR, OS, KIT, 36", PAINTED CB	1	EA	
5	068455-024	ASM, DOOR, OS, KIT, 36", PAINTED AR	1	EA	
5	068455-2801	ASM, DOOR, OS, KIT, 36", PAINTED - Kalamata Red (KA)	1	EA	
5	068455-2847	ASM, DOOR, OS, KIT, 36", PAINTED - Blackforest Green (BF)	1	EA	
5	068455-6180	ASM, DOOR, OS, KIT, 36", PAINTED - Cypress Green (CY)	1	EA	
5	068455-6258	ASM, DOOR, OS, KIT, 36", PAINTED - Cast Black (CS)	1	EA	
5	068455-6421	ASM, DOOR, OS, KIT, 36", PAINTED - Vanilla Cream (VC)	1	EA	
5	068455-6765	ASM, DOOR, OS, KIT, 36", PAINTED - Bywater Blue (BW)	1	EA	
5	068455-6797	ASM, DOOR, OS, KIT, 36", PAINTED - Alluvial Blue (AB)	1	EA	
5	068455-6871	ASM, DOOR, OS, KIT, 36", PAINTED - San Marzano Red (SM)	1	EA	
5	068455-7024	ASM, DOOR, OS, KIT, 36", PAINTED - Pacific Grey (PG)	1	EA	
5	068455-7070	ASM, DOOR, OS, KIT, 36", PAINTED - Frost White (FW)	1	EA	
5	068455-7585	ASM, DOOR, OS, KIT, 36", PAINTED - Reduction Red (RE)	1	EA	



Item	Part No.	Name	Qty	Uom	NOTES
5	068455-7652	ASM, DOOR, OS, KIT, 36", PAINTED -Artic Grey (AG)	1	EA	
5	068455-7674	ASM, DOOR, OS, KIT, 36", PAINTED - Damascus Grey (DG)	1	EA	
5	068455-9178	ASM, DOOR, OS, KIT, 36", PAINTED - Slate Blue (SB)	1	EA	
6	045403-000	BRACKET, MOUNTING, DOOR, ASM	1	EA	
7	003860-000	10-18 x .500 FASTNR,SCR,HXWH,STL,ZPLT	6	EA	
8	030823-000	#10-32 PAN HEAD PHILLIPS MACHINE SCREW	4	EA	
9	004907-000	STEEL FINISHING PLUG, NICKEL PLTD 25/64" HOLE	4	EA	
10	pd020073	SRW #10 X 24 X 3/8 WAFER HD TYPE23	2	EA	
11	004526-000	10 x 1/2 PH, NPLT, TAPPING SCREW	6	EA	
12	025099-000	INNER DOOR GLASS, 30"	1	EA	
13	070671-000	BRACKET, GLASS, ID	1	EA	
14	046000-000	HINGE, NUOVA STAR, BLUE	2	EA	
15	046030-000	RETAINER, INSL, 36" INSIDE	1	EA	
16	046051-000	INSULATION, LINER, DOOR, 36"	1	EA	
17	PD020063	SCREW-#8(A) X 3/8"PH WFR HD/BK OXID	4	EA	
18	PD020033	SRW-#10-24X1/2"T(23)PH.WFR HD (NKL)	3	EA	
19	043688-402	PNL,LINER, WA, 36" BK	1	EA	
20	046651-000	SCREW, TRILOBE, 10-32, TRUSS, PH, BLACK	2	EA	
21	061691-000	RETAINER, INSULATION, DOOR, 36"	1	EA	
22	PB070014	DOOR GLASS SEAL STRIP - WINDOW DRS.	4.88ft	EA	
23	062384-000	INSULATION, DOOR, SIDE, SUPERWOOL, 0.25", VDR5, 36	2	EA	
24	062380-000	INSULATION, DOOR, TOP, SUPERWOOL, 0.25", VDR5	1	EA	

Harness View





Item	Part No.	Name	Qty	Uom	NOTES
1	053599-000	HARN, VGR7366B, MAIN	1	EA	



Appendix A:Pages Index

Base View	1
Control View	4
Decor View	5
Door View	7
Electrical View	6
Gas Asm View	2
Harness View	8
Surface Cooking View	3



Appendix B:Parts Index

002884-000	2	042323-2801	5
003011-000	7	042323-2847	5
003012-000	7	042323-6180	5
003801-000	5	042323-6258	5
003860-000	1, 3, 5, 6, 7	042323-6421	5
004526-000	7	042323-6765	5
004907-000	7	042323-6797	5
005311-000	6	042323-6871	5
005536-000	1	042323-7024	5
006080-000	7	042323-7070	5
008026-000	1	042323-7585	5
009005-000	1	042323-7652	5
009112-000	2	042323-7674	5
012438-000	1	042323-9178	5
013580-402	1	042339-000	1
014747-000	1	042343-000	1
019959-000	6	042346-000	1
020409-000	1	042347-000	1
020412-000	1	042350-000	3
020604-000	1	042372-000	5
021199-000	6	042375-000	5
025099-000	7	042543-000	5
030813-000	6	042545-000	3
030823-000	7	042741-000	3
031313-000	3	042742-000	3
031445-402	1	042785-000	3
031735-000	6	043276-000	2
033668-000	1	043453-000	6
034927-000	5	043615-000	6
034928-000	5	043657-000	6
037304-000	1, 6	043688-402	7
040736-000	1	043699-402	1
042117-000	5	043730-000	1
042287-000	5	043746-000	5
042323-002	5	043800-000	1
042323-005	5	043994-000	6
042323-006	5	044044-000	1
042323-008	5	044178-000	5
042323-013	5	044195-000	6
042323-024	5	044236-000	2
		044321-000	2



044637-000	2	049551-006	5
044638-000	2	049551-008	5
044686-000	2	049551-013	5
044691-000	2	049551-024	5
044747-000	6	049551-2801	5
044937-000	4	049551-2847	5
045060-000	1	049551-6180	5
045403-000	7	049551-6258	5
045528-000	1	049551-6421	5
045548-000	1	049551-6765	5
045550-000	1	049551-6797	5
045551-000	1	049551-6871	5
045594-000	6	049551-7024	5
045774-000	6	049551-7070	5
045932-000	6	049551-7585	5
046000-000	7	049551-7652	5
046019-000	1	049551-7674	5
046030-000	7	049551-9178	5
046051-000	7	049552-002	5
046065-000	1	049552-005	5
046119-000	2	049552-006	5
046120-000	2	049552-008	5
046187-000	1	049552-013	5
046283-000	6	049552-024	5
046399-000	2	049552-2801	5
046409-000	1	049552-2847	5
046651-000	1, 7	049552-6180	5
046677-000	1	049552-6258	5
046935-000	1	049552-6421	5
046964-000	2	049552-6765	5
048014-000	6	049552-6797	5
048017-402	3	049552-6871	5
048028-000	2	049552-7024	5
048031-000	2	049552-7070	5
048048-000	1	049552-7585	5
048188-000	3	049552-7652	5
048347-000	6	049552-7674	5
049499-000	1	049552-9178	5
049534-000	3	049629-000	1
049551-002	5	049744-000	3
049551-005	5	049745-000	3



049746-000	3	064541-000	6
049753-000	3	064543-000	6
049878-000	6	064635-000	1
049964-000	3	065702-579	6
050267-000	1	066105-000	2
050794-000	1	066169-000	2
051541-000	2	066170-000	3
052259-000	3	066171-000	2
052260-000	3	066172-000	2
052427-000	5	066173-000	2
052632-000	1	066174-000	2
053599-000	8	066177-000	2
054057-000	1	066210-000	1, 1
056013-000	1	066225-402	5
056434-000	2	066367-000	6
057686-000	5	066475-000	3
058147-000	3	066802-000	2
058659-603	6	066803-000	2
058659-604	6	066804-000	2
060591-000	1	066805-000	2
061041-000	4	066806-000	2
061074-000	6	066807-000	2
061090-501	4	066808-000	6
061211-000	6	066809-000	6
061224-000	2	067028-000	2
061225-000	2	067030-000	2
061226-000	2	067031-000	2
061227-000	2	067118-2544	4
061253-000	6	068449-000	7
061691-000	7	068455-002	7
062214-000	6	068455-005	7
062341-000	7	068455-006	7
062380-000	7	068455-008	7
062384-000	7	068455-013	7
062885-501	6	068455-024	7
062991-000	1	068455-2801	7
063263-000	6	068455-2847	7
063295-000	2	068455-6180	7
063636-000	6	068455-6258	7
063640-000	4	068455-6421	7
063654-2846	4	068455-6765	7



068455-6797	7	pb040026	2
068455-6871	7	pd020073	7
068455-7024	7	pd020232	5
068455-7070	7	pe070069	5
068455-7585	7		
068455-7652	7		
068455-7674	7		
068455-9178	7		
070671-000	7		
074851-000	2		
074854-000	2		
A2002654	5		
A2004428	1		
A2004429	1		
A2005525	1		
A2008467	1		
G3001876	2		
M0211021	6		
M0238731	6		
PB020127	2		
PB020191	2		
PB040027	2		
PB040050	2		
PB040178	2		
PB040192	2		
PB040213	2		
PB070014	7		
PB070208	6		
PC030007	1		
PD010012	2		
PD020010	1, 3		
PD020032	5		
PD020033	7		
PD020046	4		
PD020063	7		
PD020068	3		
PD020269	4		
PD030018	2		
PD040005	1		
PE050206	6		
PJ030022	6		