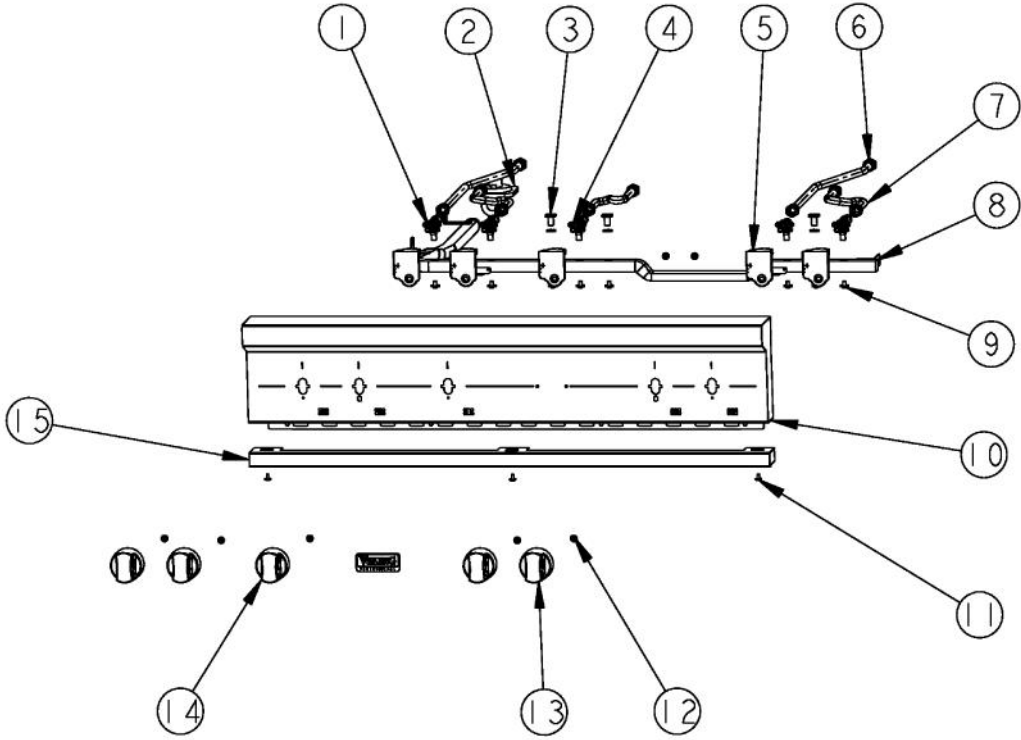
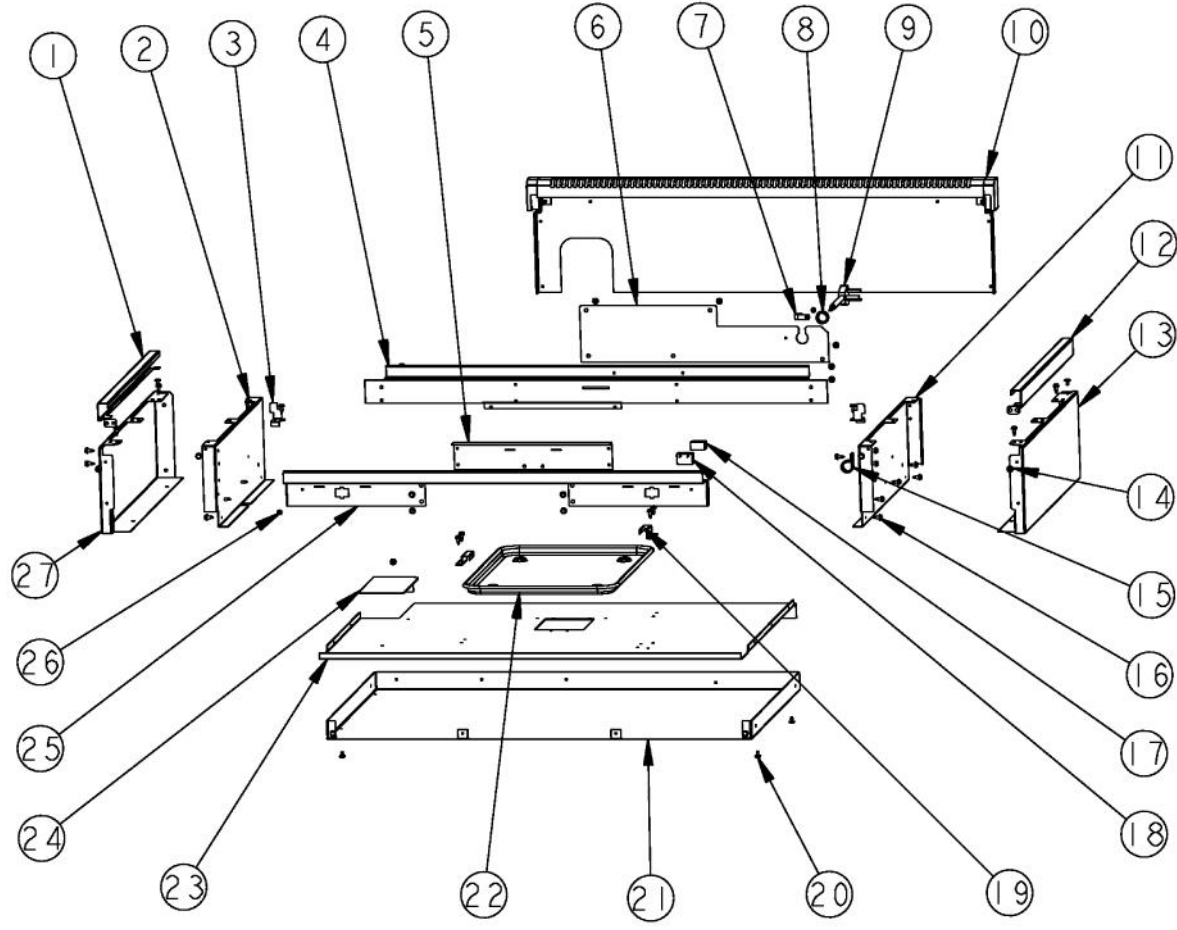


Ref #	Part Number	Qty.	Description
1	010168-000	1	CUSTOM RANGE GRILL GRATE
2	007323-000	4	BURNER GRATE
3	PA080083	4	D BURNER CAP XMATTE BLACKX
4	006706-000	4	B6 REV SEALED BURNER
5	009197-000	8	NO.6-32 X 5/8 18-8 SS NC SOC CAP
6	003322-041	4	SEALED BURNER BASE, PAINTED FINISH
7	003860-000	13	NO.10-18 X .500 FASTNR,SCR,HXWH,STL,ZPLT
8	013593-000	1	PAN, DRIP, ASM, RIGHT
9	E9108438BK	1	MAIN TOP (VGRT4G/Q) XBKX
10	002923-000	2	BURNER MODULE SUPPORT
11	001394-042	4	15000 BTU NAT JETHOLDER
12	008636-000	1	BRACKET, BURNER, GRILL, REAR
13	PA020028	1	SPARK IGNITER
15	007878-000	1	BURNER, GRIL, ASM
18	PB040238	1	90 DEGREE ORIFICE FITTING, NAT NO.47
19	007776-000	1	MOUNT, GRILL, BURNER, FRONT
20	PD020076	8	6-32 X 3/8 PHILL PAN MS
21	013595-000	1	PAN, DRIP, ASM, LEFT
22	004602-000	1	REAR SUPPORT, BURNER BOX 36
23	E9101130BK	2	GRILL SMOKE GENERATOR



Ref #	Part Number	Qty.	Description
1	006015-000	4	VALVE, BRS, SEALED TOP - ISPHORDING
2	PA070001	1	PRESSURE REGULATOR (NAT.)
3	002884-000	3	MANIFOLD PLUG
4	013583-000	1	VALVE, GRL, ASM, BRS, ISPHORDING
5	PA020058	5	IRIS SINGLE SPARK MODULE
6	PB020193	2	16 FLEX TUBING W/CONNECTORS
7	PB020192	3	10 FLEX TUBING W/CONNECTORS
8	005480-000	1	MANIFOLD, GAS, VDSC36 - 6B
9	PD010012	8	VALVE BOLT 1/4-20 UNC-2B 5/16 M.S.
10	014281-000	1	CONTROL PANEL, ASM, MODULE, VGRT536-4Q
11	PD020032	3	SRW-8(A)X3/8PH.WFR HD 7/16DIAXNICL
12	PD020046	5	NO.8 X 1/2 SCREWS
13	005269-000	4	RANGE TOP BURNER KNOB-BRUSHED, SSS
14	006574-000	1	KNOB, GRL, ASM, PVD, NO.3, SSS
15	011637-000	1	TRIM, ASM



Ref #	Part Number	Qty.	Description
1	003649-000	1	SIDE TRIM, LH - STAINLESS
2	003481-000	1	BURNER BOX SIDE, LH
3	004021-000	2	SUPPORT,TRIM,SIDE
4	004602-000	1	REAR SUPPORT, BURNER BOX 36
5	012771-000	1	RANGETOP, BRKT, FR, VDSC CUSTOM
6	014168-000	1	RANGETOP, PANEL, BACK, VGRT
7	PD030148	1	CLAMP CABLE ALUMINUM .500 DIA. (AL-8 CLAMP)
8	PD040005	1	SNAP BUSHING - 7/8
9	PE070128	1	SUPPLY CORD (VGRT/SC/SS/RC)
10	006900-000	1	ISLAND TRIM, ASM, 36 CUSTOM
11	002755-000	1	BURNER BOX SIDE, RH
12	002920-000	1	SIDE TRIM, RH - STAINLESS
13	008100-000	1	PANEL, RH RANGETOP
14	003801-000	2	SHOULDER SCREW, NO.10
15	PD030109	1	INSULATED CLAMP
16	003860-000	38	NO.10-18 X .500 FASTNR,SCR,HXWH,STL,ZPLT
17	PE070071	1	DISCONNECT BLOCK XALX 770027-1
18	000573-000	1	POWER JUMPER WIRE
19	008286-000	2	BRACKET,DRIP,PAN,CUSTOM,Q-MODELS
20	PD020032	10	SRW-8(A)X3/8PH.WFR HD 7/16DIAXNICL
21	014164-000	1	RANGETOP, PANEL BTM, VGRT536
22	PB080061	1	GREASE PAN
23	008449-000	1	BURNER BOX BOTTOM, 36
24	004016-000	1	PLATE,SVCE,RGLT
25	004603-000	1	FRONT SUPPORT, BURNER BOX 36
26	PD020010	2	10 X 3/8 GREEN GROUNDING SCREW
27	008101-000	1	PANEL, LH, RANGETOP

*No Image
Available*

Ref #	Part Number	Qty.	Description
NI	PE070128	1	SUPPLY CORD (VGRT/SC/SS/RC)
NI	027347-000	1	SUPPLY CORD JUMPER
NI	000573-000	1	POWER JUMPER WIRE
NI	PE070036	4	TIE WRAP
NI	PE070071	1	DISCONNECT BLOCK XALX 770027-1
NI	000647-000	2	IRIS IGNITOR WIRE, FRONT BURNER
NI	006766-000	2	IRIS IGNITOR WIRE, BACK BURNER
NI	PE070890	1	IRIS HARNESS - 36