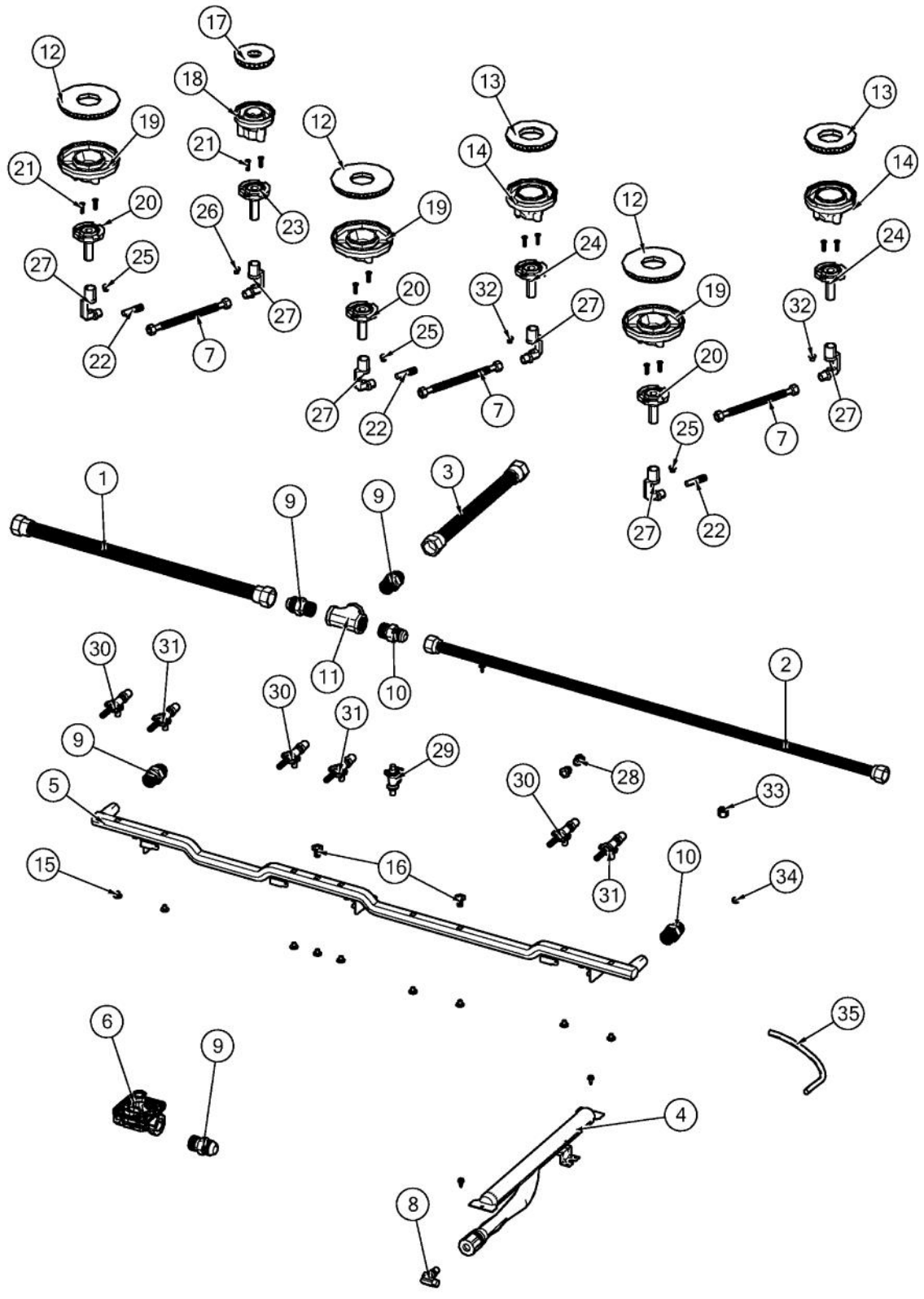
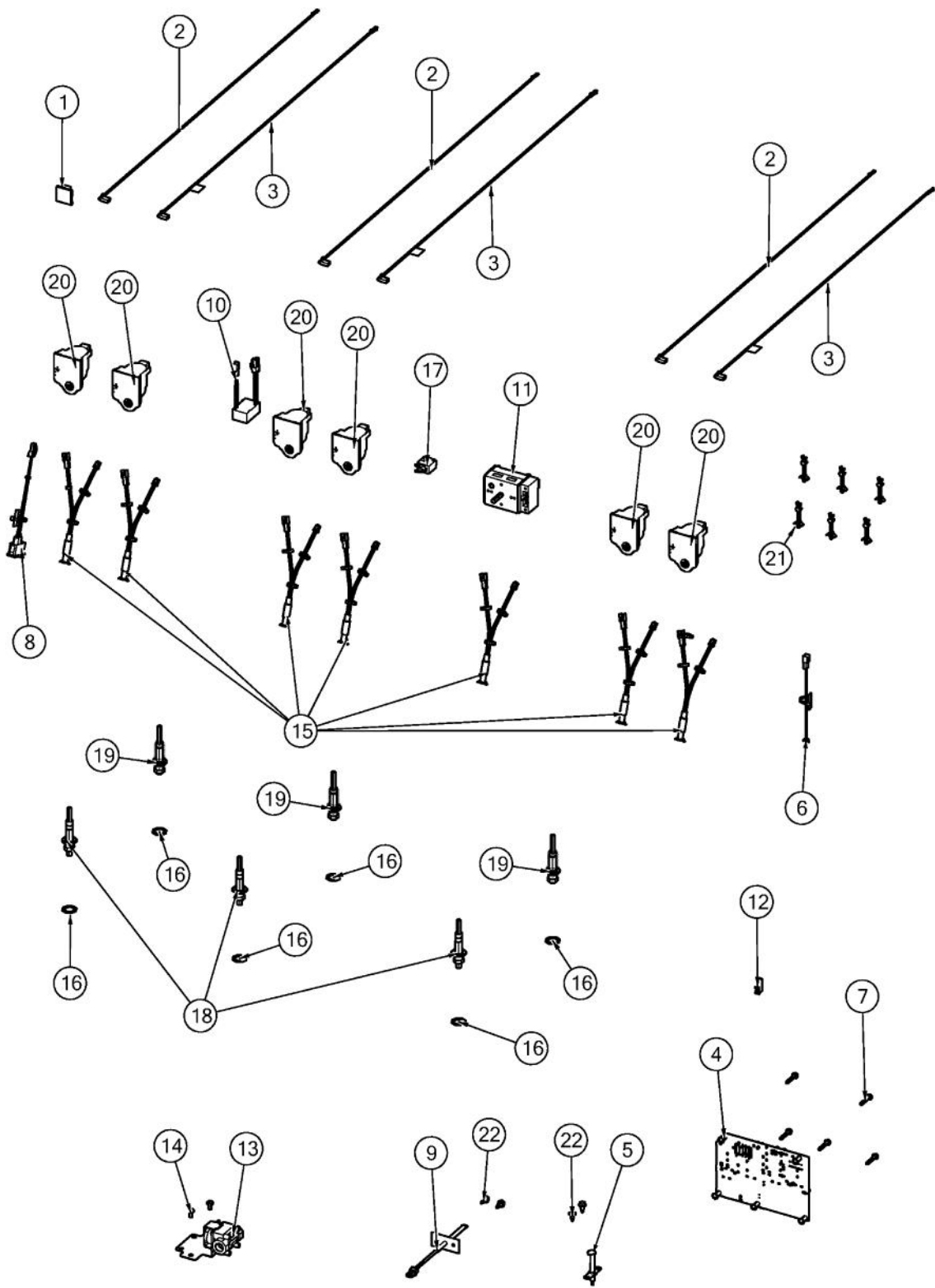


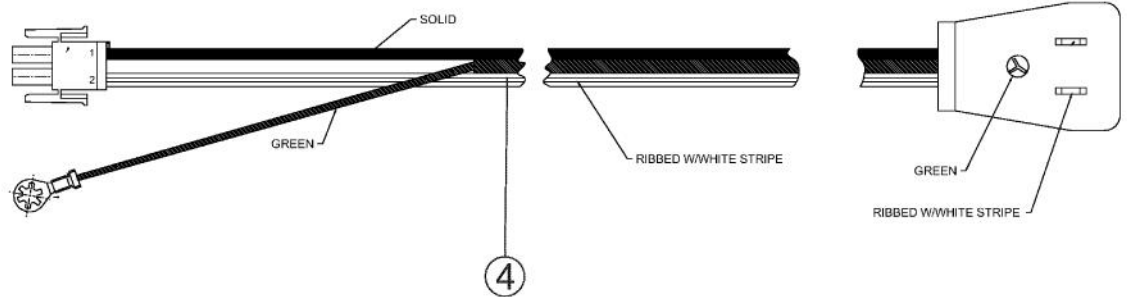
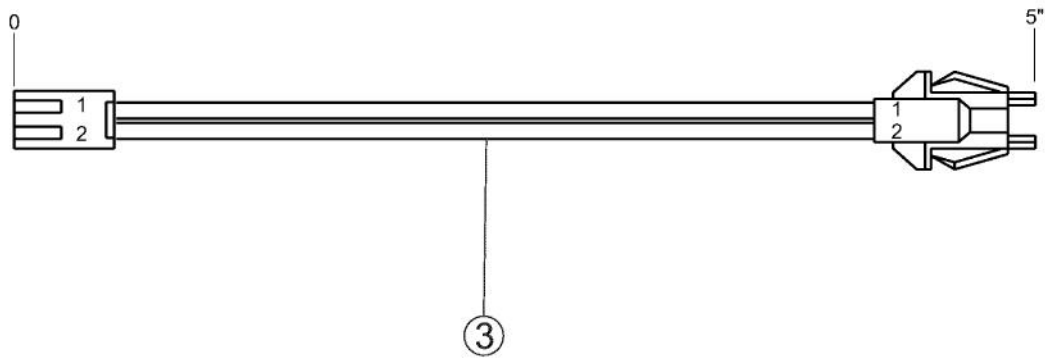
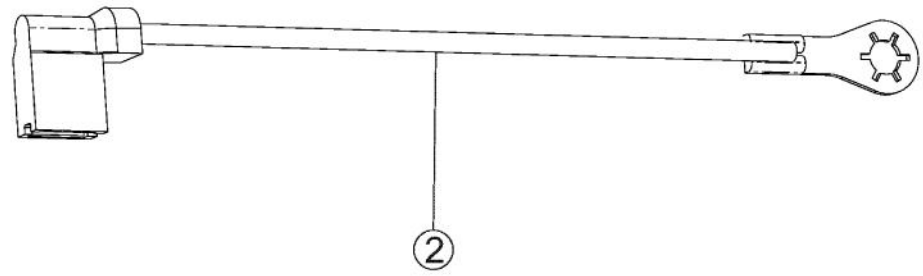
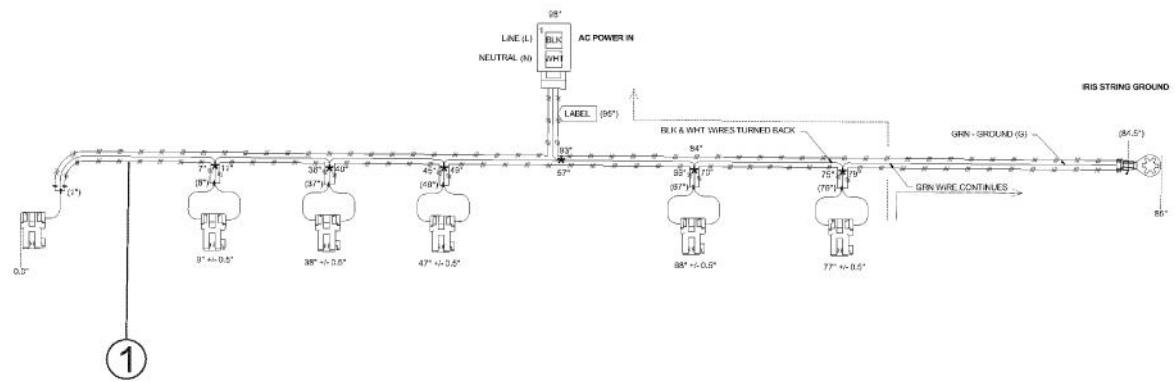
Ref #	Part Number	Qty.	Description
1	N/P		CABINET (NOT FIELD REPLACEABLE)
2	049728-000	1	BRACKET, MTG, 48 CONTROL PANEL
3	049797-000	1	INSULATION, 1/4, ADHESIVE BACKED
4	049749-000	1	TRAY, INSULATION, BURNER PAN, GRIDDLE, 48
5	049776-000	1	INSULATION, LINER, GRIDDLE, BURNER PAN, 48
6	049053-402	1	PAN, BNR, SHIM, ASM, BLK, 48 GRIDDLE
7	046854-000	1	SHIELD, HEAT
8	044873-000	1	PLATE, W/A, 12 GRIDDLE
9	047069-000	1	BASE, SUMP, GRIDDLE, ASM
10	044486-000	6	SUPPORT, HLDR, JET
11	042545-000	3	GRATE, CAST, 12
12	047072-000	1	TROUGH, GRS, GRIDDLE, ASM
13	045843-000	1	BRKT, BURNER, SPT
14	045840-000	1	BURNER, HOLDER, REAR
15	042410-000	12	SUPPORT, GRATE
16	046873-000	12	SILENCER, GRATE
17	045888-000	1	BRKT, GRDL
18	049534-000		SCREW, 8-32 X 3/4, PHIL, FLAT
19	003860-000		NO.10-18 X .500 FASTNR,SCR,HXWH,STL,ZPLT
20	037304-000		FASTENER, PNH, TORX, AB, PSVD, WAX
21	PD020068		NO.10 - 32 X 1/2TRUSS. PHIL. M.XSSX
22	033668-000	1	BRACKET, DISCONNECT
23	PE070069	1	STRAIGHT-THRU BUSHING
24	045548-000	6	CLIP, ROUTING, WIRE?
25	PD020010		10 X 3/8 GREEN GROUNDING SCREW
26	014143-000		SCR 10-12 A SHLD TRP 1/2 S ZN BLUE
27	047927-000	2	BRKT, SHELF, POWER SUPPLY
28	PD030109	1	INSULATED CLAMP
29	048961-000	12	STANDOFF, TWIST LOCK, TALL



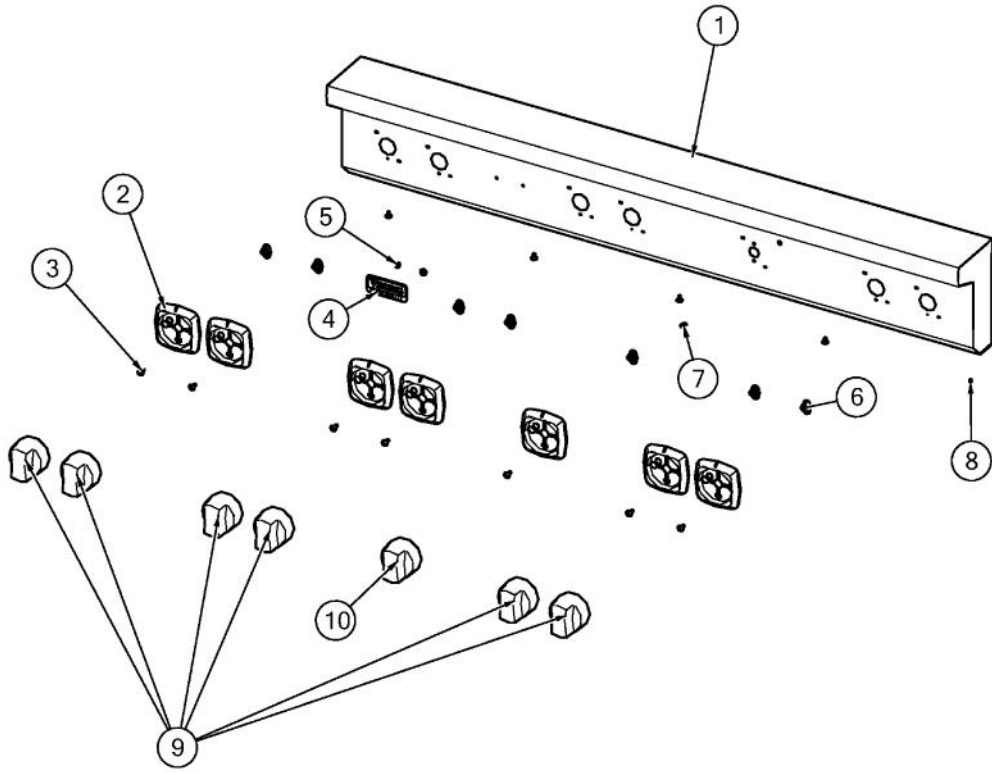
Ref #	Part Number	Qty.	Description
1	046399-000	1	TUBING, 3/4 FLEX, SST, 20
2	044832-000	1	TUBING, 1/2 FLEX, SST, 38
3	044310-000	1	TUBING, 3/4 FLEX, SST, 13
4	046133-000	1	BURNER, GRIDDLE
5	046908-000	1	MANIFOLD, GRIDDLE, GAS, 48 ASM
6	046119-000	1	PRESSURE REGULATOR - NAT
6	046120-000	1	REGULATOR, PRSS, 3/4 INLET, 3/4 OUTLET - LP
7	PB020198	3	20 FLEX TUBING
8	PB040190	1	90 DEGREE ORIFICE FITTING NO.50 NAT
8	002513-000	1	90 DEGREE ORIFICE FITTING NO.57 LP
9	044321-000	4	FITTING, ADAPTOR, 3/4 FLEX TUBING
10	044824-000	2	FITTING, ADAPTOR, 1/2 FLEX TUBING
11	044323-000	1	TEE, PIPE, 3/4
12	043159-000	3	E-BURNER HEAD
13	043251-000	2	D-BURNER HEAD
14	043249-000	2	BASE, BNR, D
15	PD010012	9	VALVE BOLT 1/4-20 UNC-2B 5/16 M.S.
16	002884-000	2	MANIFOLD PLUG
17	043791-000	1	BURNER, HEAD, BRS, C-SIZE
18	043790-000	1	BURNER, BASE, C-SIZE
19	043158-000	3	E-BURNER BASE
20	044485-000	3	VENTURI, E NAT, FLANGE, BNR - NAT
21	046964-000	3	SCREW, 10-32 X 3/4, CTSK, BLACK
22	PB020191	3	15 FLEX TUBE
23	044686-000	1	VENTURI, C NAT, C LP, FLANGE, BNR
24	044487-000	2	VENTURI, D NAT, D LP, FLANGE, BNR
25	043675-000	3	ORIFICE, BNR, STD, 2.18MM - NAT
25	043679-000	3	ORIFICE, BNR, STD, 1.32MM - LP
26	044688-000	1	ORIFICE, BNR, STD, 1.22MM - NAT
26	044820-000	1	ORIFICE, BNR, STD, .813MM - LP
27	043208-000	6	HOLDER, JET, BURNER
28	PB040050	4	3/8CC MALE COMP. FITTING W/FERRULE
29	PB030007	1	SHUT OFF VALVE
30	043134-000	3	VALVE, BNR, 9/16-24 UNEF ASSY - NAT
30	047916-000	3	VALVE, BNR, 9/16-24 UNEF ASSY - LP
31	046197-000	3	VALVE, BNR, 9/16-24 UNEF ASSY - NAT
31	047915-000	3	VALVE, BNR, 9/16-24 UNEF ASSY - LP
32	043677-000	2	ORIFICE, BNR, STD, 1.78MM - NAT
32	043680-000	2	ORIFICE, BNR, STD, 1.07MM - LP
33	PB040213	1	3/8 COMPRESSION NUT (DGCU)
34	PB040192	1	3/8` CC FERREL (DGCU)
35	PB020116	1	TUBING - 10 FLEXIBLE 12 & 24
NI	PB020126	1	3/8` S.S. FLEX TUBING 15` (DGCU)



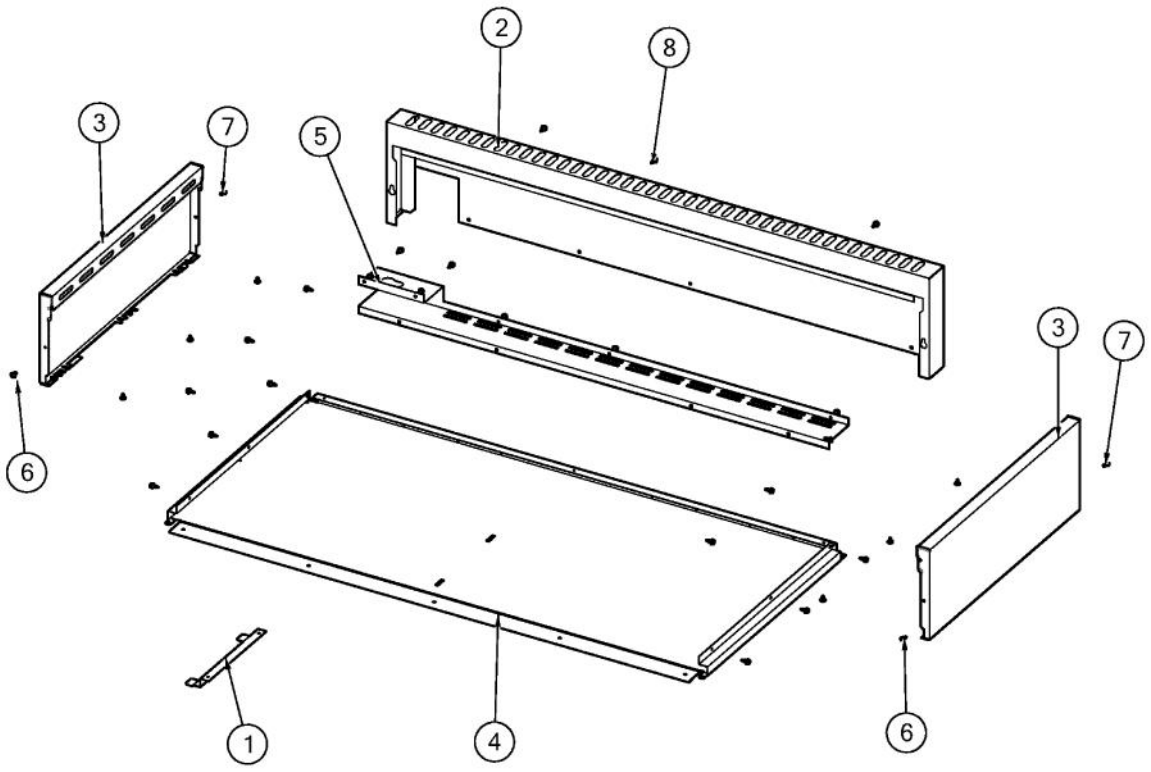
Ref #	Part Number	Qty.	Description
1	049878-000	1	CORD, CLIP, ADHESIVE
2	028312-000	3	WIRE, ELECTRODE,IRIS,REAR?
3	028324-000	3	WIRE, ELECTRODE,IRIS,FRONT?
4	043453-000	1	MODULE, DSI
5	PA020028	1	SPARK IGNITER
6	048482-000	1	HARNESS, LED, JUMPER
7	M0211021	5	SCREW-SM
8	046283-000	1	SWITCH, LIGHTS, ACCENT W/CONN?
9	007008-000	1	RTD PROBE
10	045647-000	1	AC/DC CONVERTER, POWERLINE
11	038413-000	1	TSTAT, SMPS, ELEC, 2-POS, .91 SHAFT, CB
12	038655-000	1	GRIDDLE, JUMPER, BRIGADE
13	009111-000	1	VALVE, SOL, SINGLE
14	PD020004	1	10X3/8PH.HD.TYPE 25 REPL PD040125
15	048809-000	7	LAMP, LED, 12VDC, 2.84K, WHITE, ASM?
16	045932-000	6	WASHER, ELECTRODE?
17	043135-000	1	HOUSING, LIGHT, LED, BLUE 3.3V
18	043065-000	3	ELECTRODE, ASM E?
19	043067-000	3	ELECTRODE, ASM, D?
20	PA020058	6	IRIS SINGLE SPARK MODULE
21	045528-000	7	STANDOFF, LOCKING CLIP
22	003860-000	4	NO.10-18 X .500 FASTNR, SCR, HXWH, STL, ZPLT
NI	049435-000	1	HARNESS, 7 SERIES RANGETOP, GRIDDLE, ELECTRIC



Ref #	Part Number	Qty.	Description
1	049047-000	1	HARN, IRIS, 48, 6G, W/CONN
2	043994-000	1	WIRE, GROUND, 5
3	030292-000	1	RTD JUMPER
4	044747-000	1	CORD, SUPPLY, CORD



Ref #	Part Number	Qty.	Description
1	048860-2646	1	PANEL, CTROL, VGRT7486G W/GRAPHICS
2	048309-000	7	BZL, KNOB
3	PD020046	7	NO.8 X 1/2 SCREWS
4	PE010142	1	3 LOGO XBKXXCHROME
5	PD030006	2	CAPPED WASHER PAL NUT
6	044512-000	7	BEARING, BEZEL, ASM
7	027968-000	1	INDICATOR, LIGHT, BLUE
8	PD020032	5	SRW-8(A)X3/8PH.WFR HD 7/16DIAXNICL
9	042558-000	6	KNOB, ASSY, BURNER
10	045725-000	1	KNOB, THERMOSTAT, GRIDDLE ASSY



Ref #	Part Number	Qty.	Description
1	046508-000	1	BRACKET, SPRT, BOT
2	042797-000	1	TRIM, IS, VGR, 48?
3	042884-000	2	COVER, OS, RH/LH UPPER?
4	046117-000	1	RANGETOP, PANEL, BOTTOM, VGRT748
5	046515-000	1	SHIELD, BRKT, RANGETOP
6	014143-000	2	SCR 10-12 A SHLD TRP 1/2 S ZN BLUE
7	003801-000	2	SHOULDER SCREW, NO.10
8	003860-000	1	NO.10-18 X .500 FASTNR,SCR,HXWH,STL,ZPLT