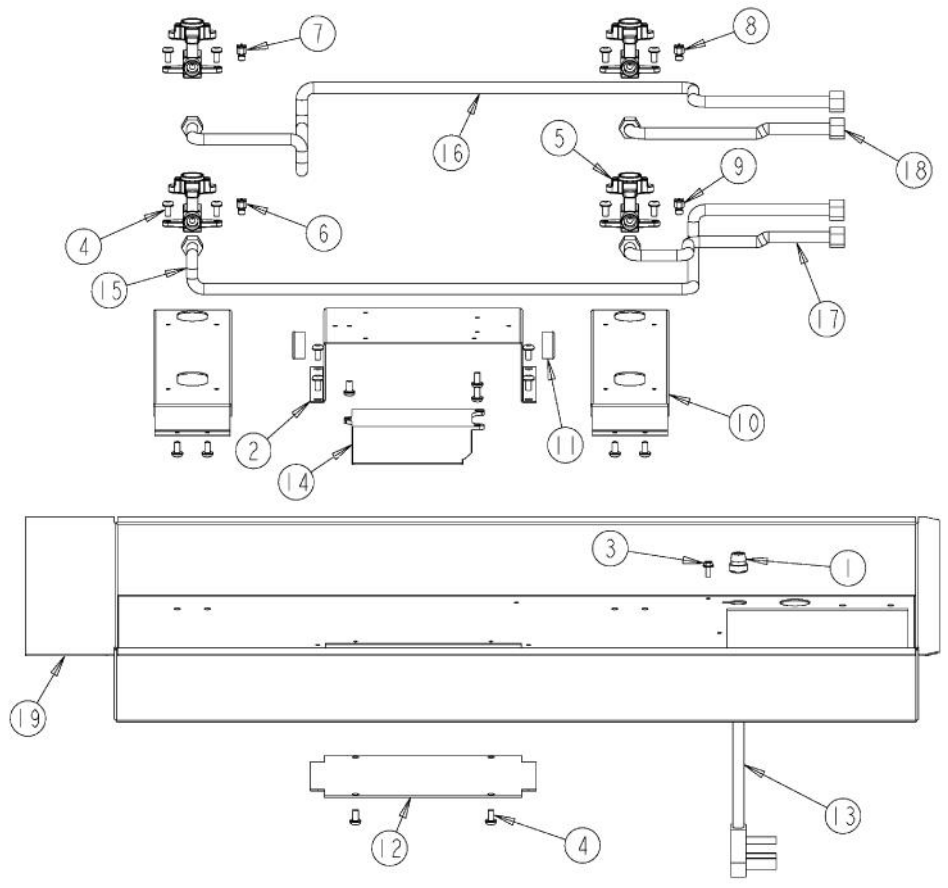
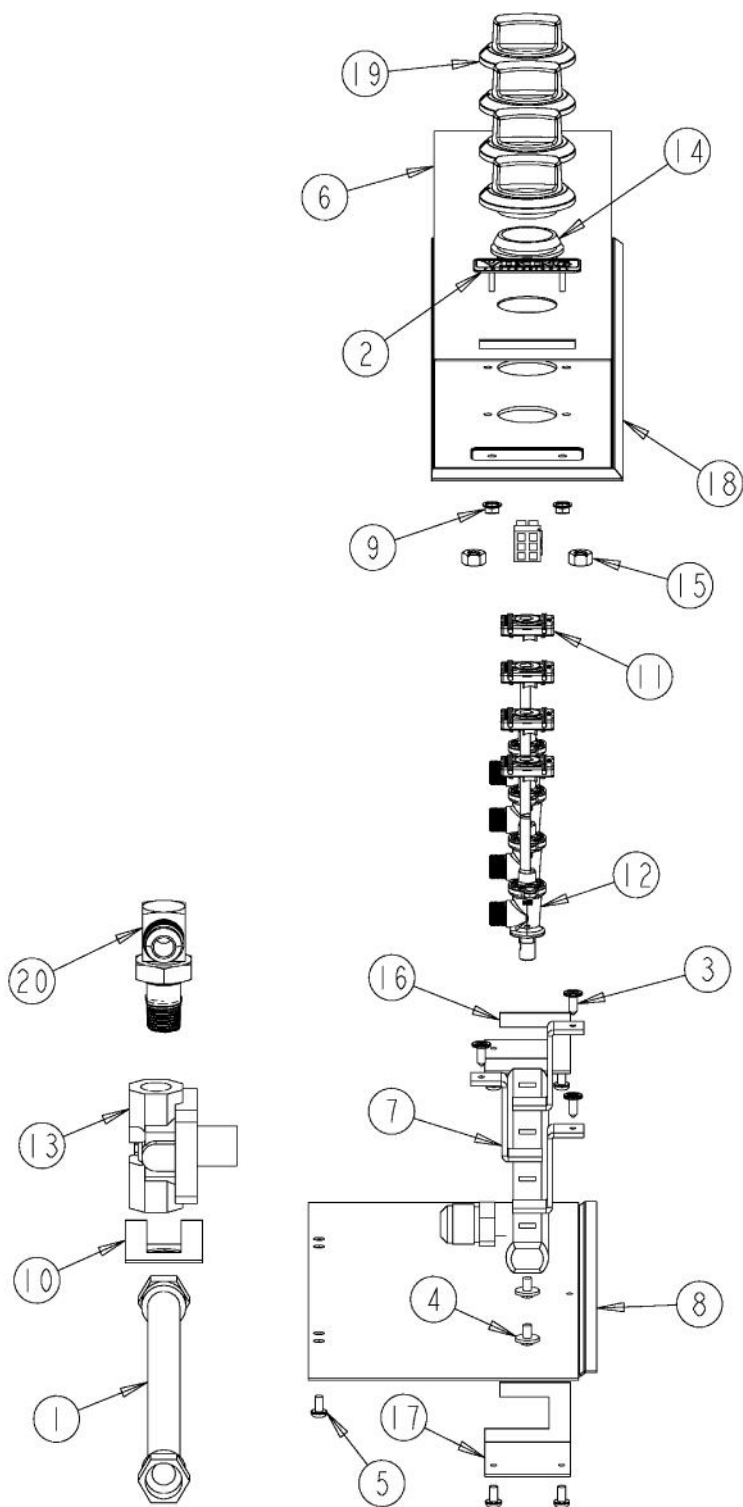


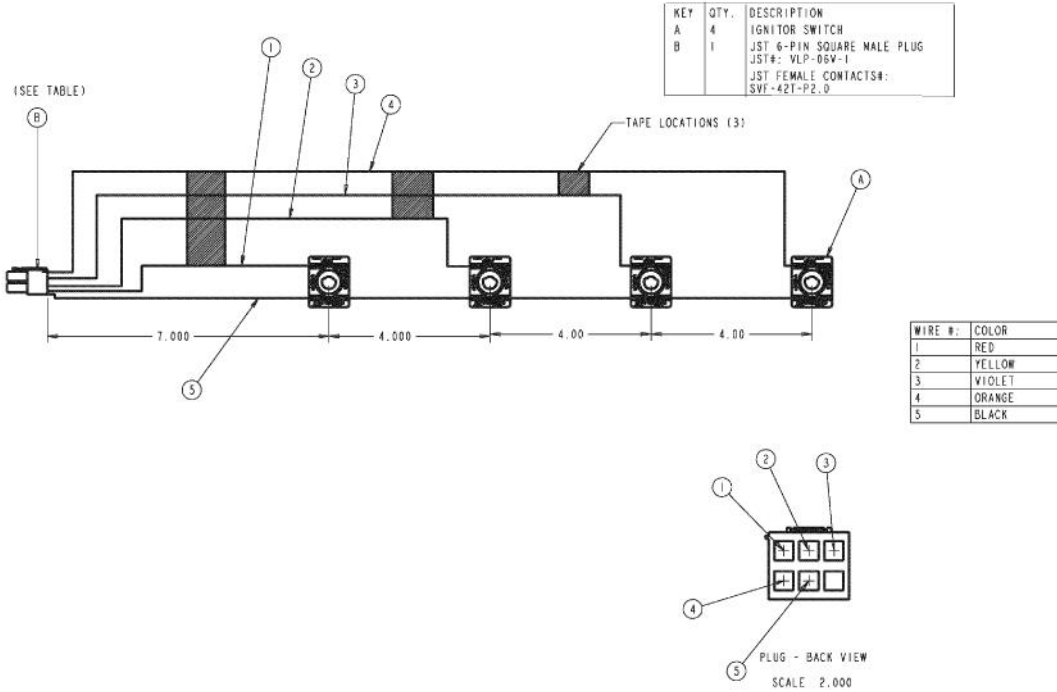
Ref #	Part Number	Qty.	Description
1	B21010611		30 MAIN TOP
	E91010611AL		VGSU102 SEALED TOP XALX
	E91010611BK		VGSU102 SEALED TOP XBKX
	E91010611BT		VGSU102 SEALED TOP XBTX
	E91010611CB		VGSU102 SEALED TOP XCBX
	E91010611EP		VGSU102 SEALED TOP XEPX
	E91010611FG		VGSU102 SEALED TOP XFGX
	E91010611GG		VGSU102 SEALED TOP XGGX
	E91010611LE		VGSU102 SEALED TOP XLEX
	E91010611MJ		VGSU102 SEALED TOP XMJX
	E91010611SG		VGSU102 SEALED TOP XSGX
	E91010611VB		VGSU102 SEALED TOP XVBX
	E91010611WH		VGSU102 SEALED TOP XWHX
2	PA080099		DGRT-ACOMPLETE BURNER HEAD ASSEMBLY
3	PA080100		DGRT-B COMPLETE BURNER HEAD ASSEMBLY
4	PA080101		DGRT-C COMPLETE BURNER HEAD ASSEMBLY
5	PA080102		DGRT-D COMPLETE BURNER HEAD ASSEMBLY
6	PA060096		30 VGSU GRATE
	PA060114		30 GRATE 1 (GRAY)
7	PB050072		A-BASE
8	PB050071		B-BASE
9	PB050070		C-BASE
10	PA080083		D BURNER CAP XMATTE BLACKX
	PA080086		D BURNER CAP XMATTE GRAYX
11	PA080103		DGRT-A BURNER CAP- BLACK
	PA080104		DGRT-A BURNER CAP- GRAY
12	PA080105		DGRT-B BURNER CAP- BLACK
	PA080106		DGRT-B BURNER CAP- GRAY
13	PA080107		DGRT-C BURNER CAP- BLACK
	PA080108		DGRT-C BURNER CAP- GRAY
14	PB050069		D-BASE
15	PD020159		DGSU BURNER BASE SCREW
16	PA060097		VGSU102 GRATE 2
	PA060115		30 GRATE 2 (GRAY)



Ref #	Part Number	Qty.	Description
1	PE070069		STRAIGHT-THRU BUSHING
2	A2005717		SPARK MODULE BOX (DGCU)
3	PD020010		10 X 3/8 GREEN GROUNDING SCREW
4	PD020004		10X3/8PH.HD.TYPE 25 REPL PD040125
5	PB050067		JETHOLDER
6	PB040254		NO.49 NAT
	PB040199		NATURAL ORIFICE NO.56
7	PB040255		NO.52 NAT
	PB040256		LP ORIFICE NO.62
8	PB040236		NO.55 NAT
	PB040257		LP ORIFICE NO.66
9	PB040199		NATURAL ORIFICE NO.56
	PB040258		LP ORIFICE NO.69
10	A20010622		JET HOLDER SUPPORT
11	PD040005		SNAP BUSHING - 7/8
12	A1005718		MODULE COVER
13	G4007440		SUPPLY CORD ASSY
14	PA020041		TYTRONICS 0+4 SPARK MODULE
15	PB020309		VGSU30 LF 3/8 TUBE
16	PB020311		VGSU30 LR TUBE
17	PB020308		VGSU30 RF 38 TUBE
18	PB020310		VGSU30 RR TUBE
19	A30010615		VGSU102 BURNER BOX



Ref #	Part Number	Qty.	Description
1	PB020254		5/8 FLEX TUBE 15
2	PE010191		2 1/2 VIKING LOGO BLACK/CHROME
	PE010192		2 1/2 VIKING LOGO BLACK/BRASS
	PE010193		2 1/2 VIKING LOGO WHITE/CHROME
	PE010194		2 1/2 VIKING LOGO WHITE/BRASS
3	PD020046		NO.8 X 1/2 SCREWS
4	PD010012		VALVE BOLT 1/4-20 UNC-2B 5/16 M.S.
5	PD020004		10X3/8PH.HD.TYPE 25 REPL PD040125
6	PE010187		30 VGSU INSERT SS/BK
	PE010188		30 VGSU INSERT SS/WH
7	PA050097		30 VGSU MANIFOLD
8	A20010614		ACCESS COVER PLATE
9	PD030006		CAPPED WASHER PAL NUT
10	A2007840		DGSU BULKHEAD BRACKET
11	PE070817		IGNITOR SWITCH HARNESS 4B, 30
12	PA010217		COOKTOP VALVE
13	PA070004		PRESSURE REG.(NAT.) RV47L-77-5.0
	PA070005		PRESSURE REG.(LP) RV47L-77-10.0
14	PB070320		SILICONE EXTRUSION
15	PD030150		5/16 NC NUT
16	A20010620		VGSU MANIFOLD BRACKET (REAR)
17	A20010621		VGSU MANIFOLD BRACKET (FRONT)
18	PE040223		VGSU102 CTRL PNL
	PE040223PVD		VGSU102 CTRL PNL XPV DX
19	PA010221		KNOB, ASM, BLACK, VGSU
	PA010222		VGSU103/163 KNOB ASSY WHITE
	PA010223		VGSU103/163 KNOB ASSEMBLY BK/BRASS
	PA010224		VGSU103/163 KNOB ASSY WHITE/BRASS
20	PB040231		90 DEGREE BULKHEAD ELBOW W / LOCKNUT



Ref #	Part Number	Qty.	Description
1	PE070817		IGNITOR SWITCH HARNESS 4B, 30