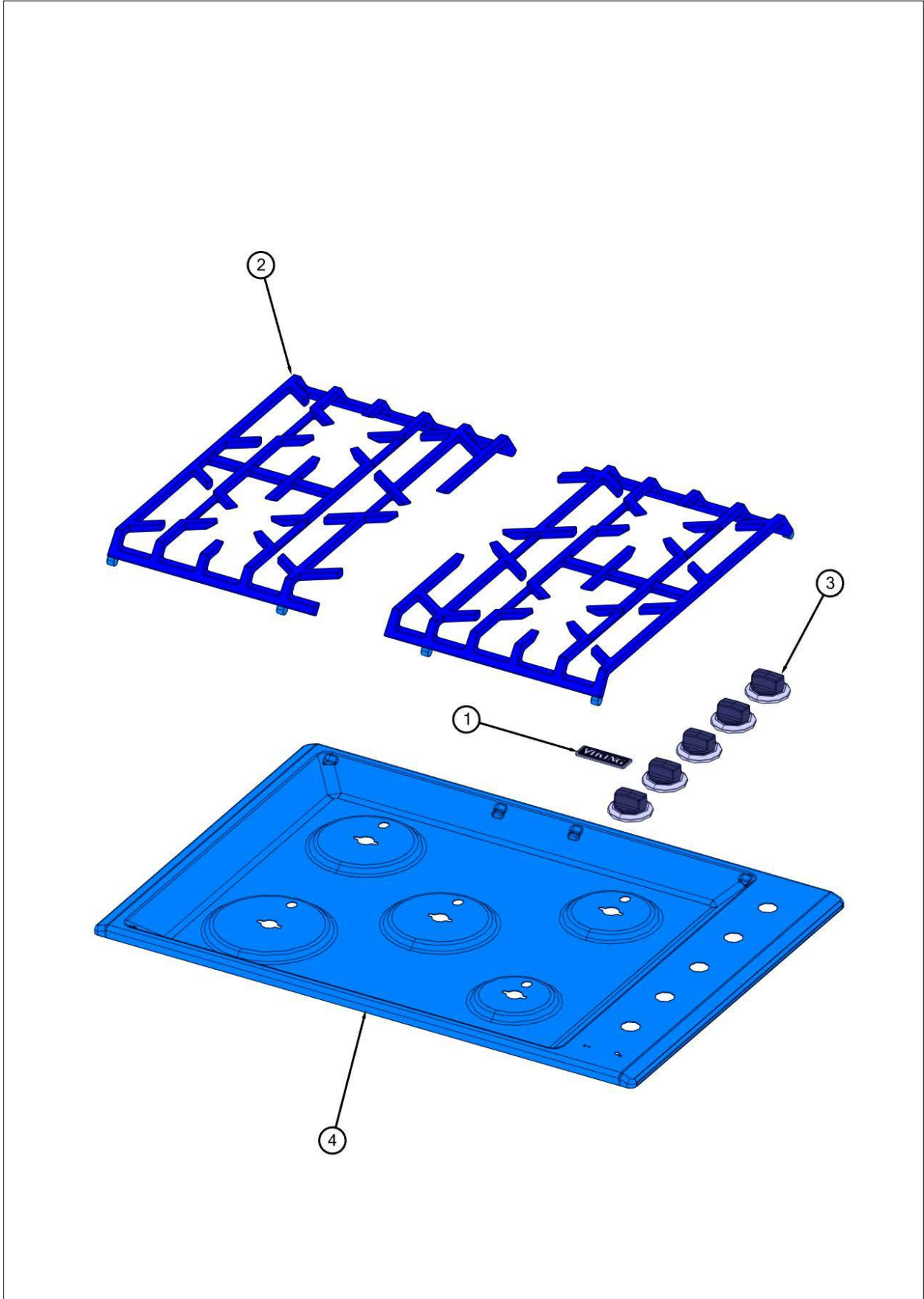


**VGSU53015BSS**

Surface Cooking View .....	1
Gas Asm View .....	2
Electrical View .....	3
Burner Box View .....	4
Appendix A:Pages Index .....	A
Appendix B:Parts Index .....	B



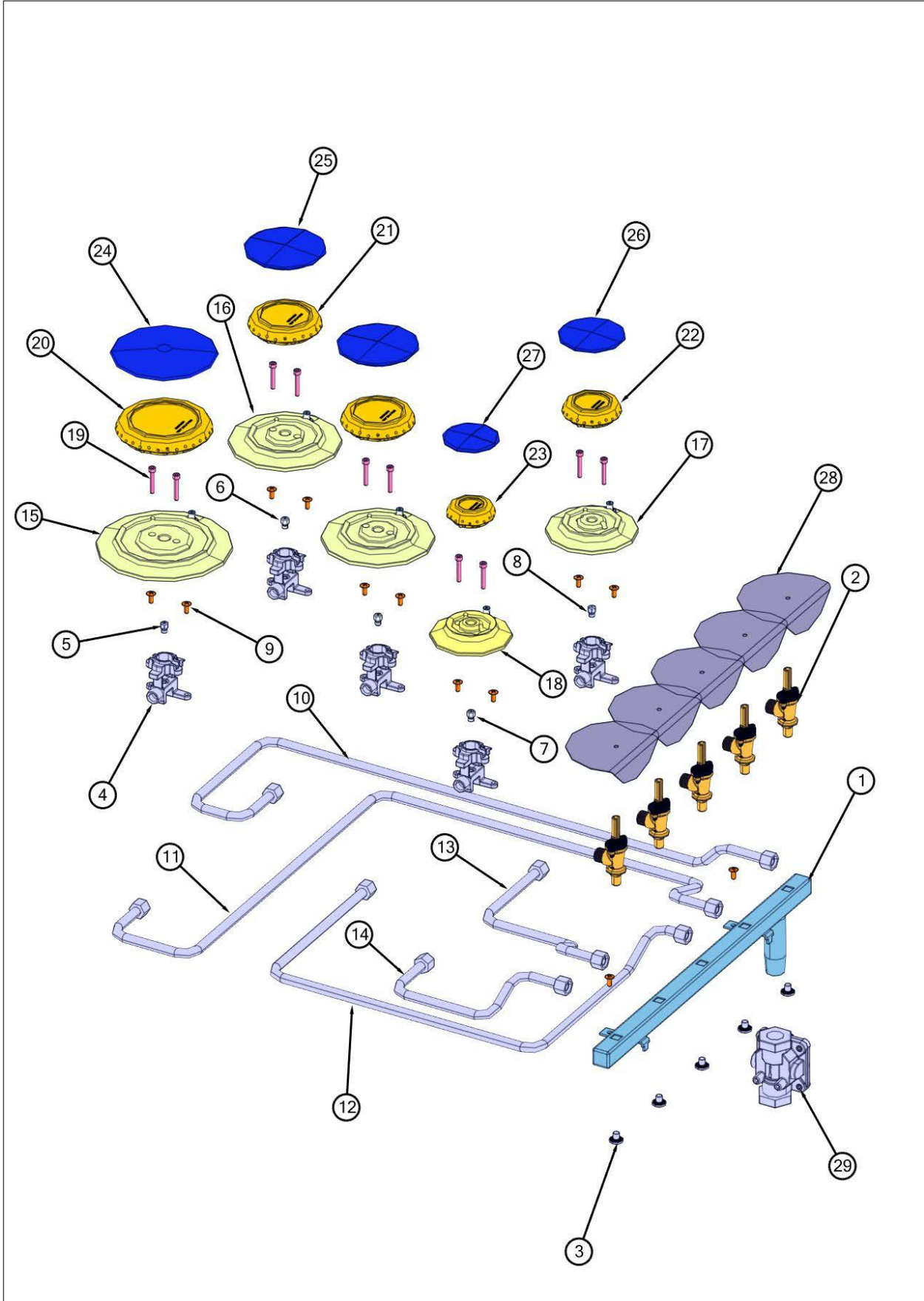
Surface Cooking View





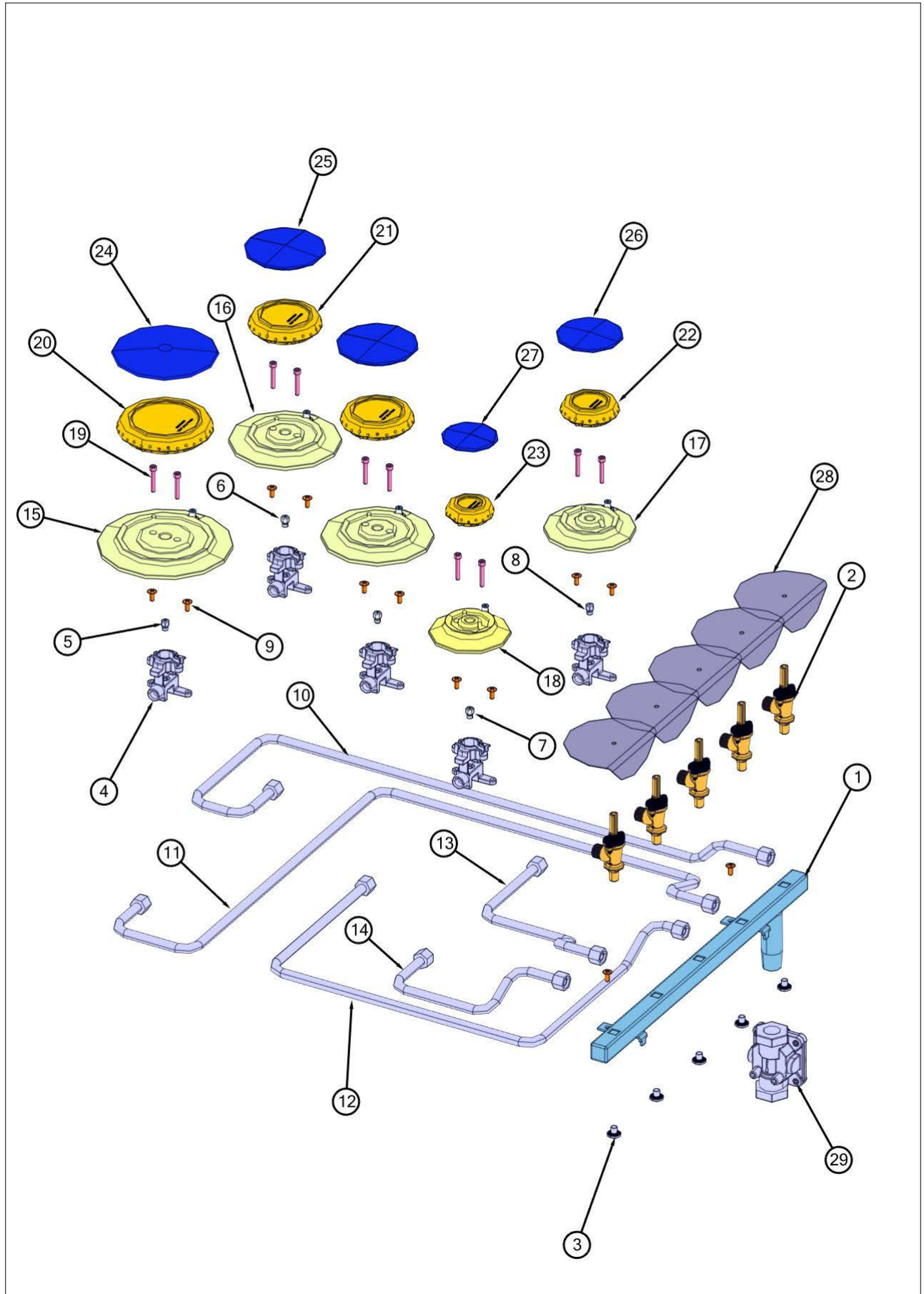
Item	Part No.	Name	Qty	Uom	NOTES
1	065859-000	NAMEPLATE, VIKING, ADHESIVE W/PINS, 2.750"	1	EA	
2	042747-000	GRATE, ASM, 30	2	EA	
NI	039134-000	GRATE FOOT	8	EA	
3	064994-000	KNOB, ASSY, VGSU BLACK CHROME	5	EA	
4	051131-2529	PAN, BNR, ETCHED, 30	1	EA	

Gas Asm View





Item	Part No.	Name	Qty	Uom	NOTES
1	039012-000	MANIFOLD, GAS, 30 COOKTOP	1	EA	
2	039678-000	VALVE, COOKTOP	5	EA	
3	PD010012	VALVE BOLT 1/4-20 UNC-2B 5/16" M.S.	5	EA	
4	PB050067	JETHOLDER	5	EA	
5	044706-000	ORIFICE, STD .079 DIA - NAT	1	EA	
5	PB040199	ORIFICE NO.56	1	EA	
6	PB040255	NO.52 NAT	2	EA	
6	PB040202	NO.63 ORIFICE FOR SEALED BURNER - LP	2	EA	
7	PB040274	NO.58 - NAT	1	EA	
7	PB040275	NO.70 ORIFICE - LP	1	EA	
8	044707-000	ORIFICE, STD .051 DIA - NAT	1	EA	
8	044710-000	ORIFICE, .030 DIA - LP	1	EA	
9	008863-000	SCREW NO.8 - 18 X 3/8, PHIL, LOW PROFILE TRUSS	12	EA	
10	040396-000	TUBING, ASM, LEFT REAR	1	EA	
11	040393-000	TUBING, ASM, LEFT FRONT	1	EA	
12	040385-000	TUBING, ASM, CENTER	1	EA	
13	040382-000	TUBING, ASM, RIGHT REAR	1	EA	
14	040380-000	TUBING, ASM, RIGHT FRONT	1	EA	
15	PB050069	D-BASE	1	EA	
16	PB050070	C-BASE	2	EA	
17	PB050071	B-BASE	1	EA	
18	PB050072	A-BASE	1	EA	
19	PD020159	DGSU BURNER BASE SCREW	10	EA	
20	PA080102	DGRT-D COMPLETE BURNER HEAD ASSEMBLY	1	EA	
21	066812-000	HEAD, BURNER, C	2	EA	
22	PA080100	DGRT-B COMPLETE BURNER HEAD ASSEMBLY	1	EA	
23	PA080099	DGRT-ACOMPLETE BURNER HEAD ASSEMBLY	1	EA	
24	066958-000	D BURNER CAP *MATTE BLACK*	1	EA	
25	066965-000	CAP, BURNER, C, BLK	2	EA	

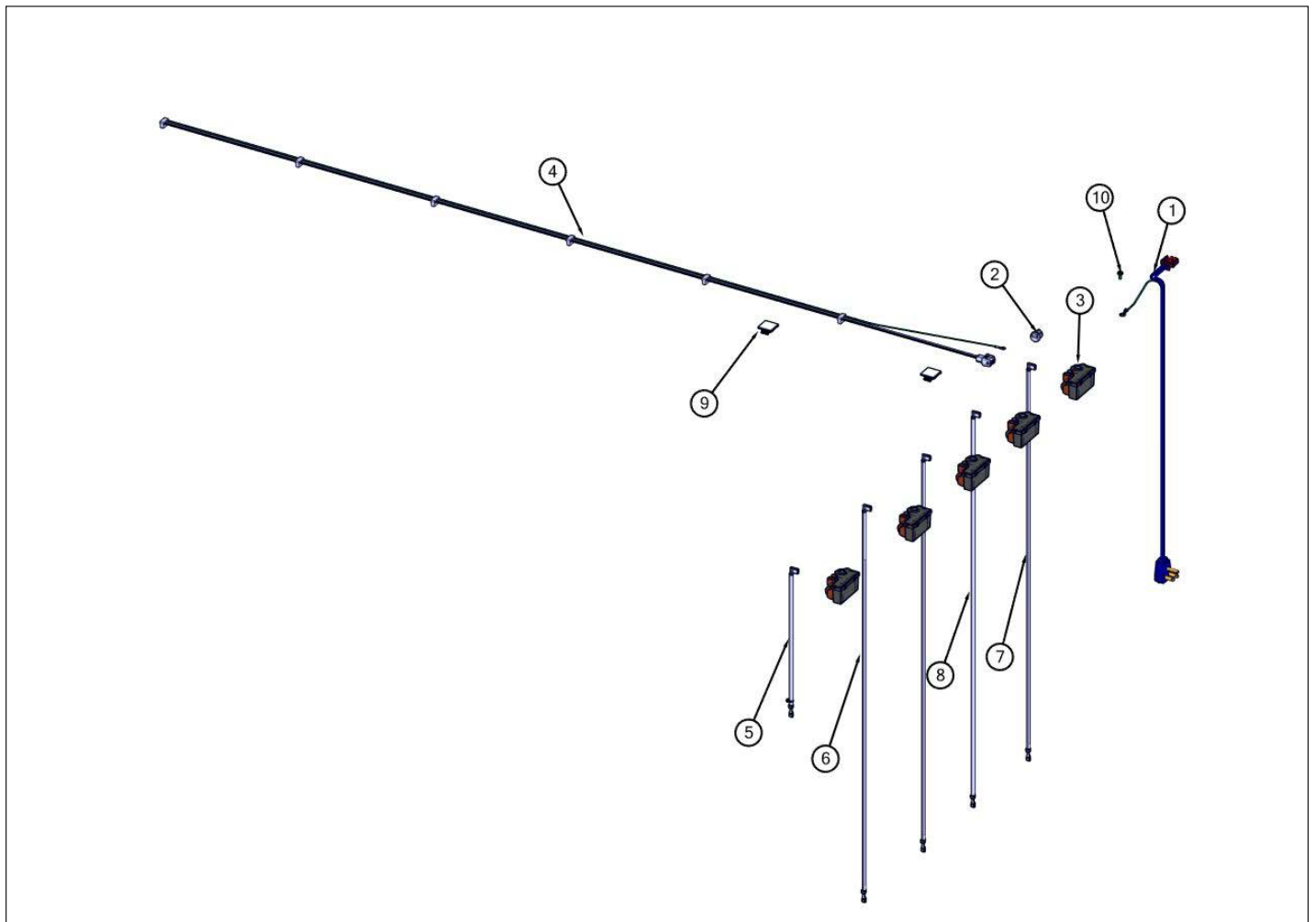






Item	Part No.	Name	Qty	Uom	NOTES
26	066975-000	CAP, BURNER, B, BLK	1	EA	
27	066976-000	CAP, BURNER, A, BLK	1	EA	
28	019955-000	SHIELD, WTR	5	EA	
29	PA070004	Pressure Regulator (Nat.)	1	EA	
29	PA070005	PRESSURE REG.(LP) RV47L-77-10.0	1	EA	

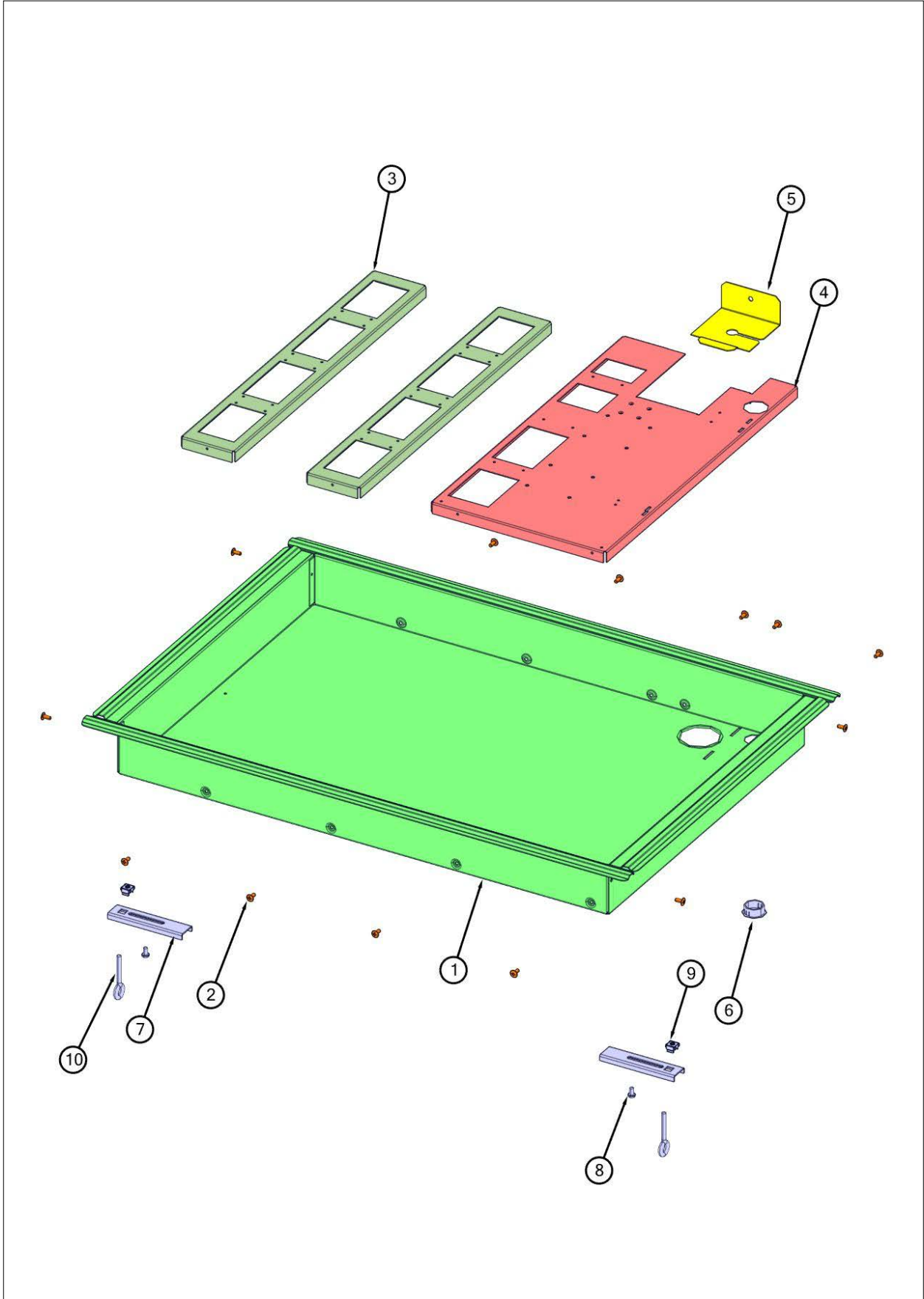
Electrical View





Item	Part No.	Name	Qty	Uom	NOTES
1	044747-000	CORD, SUPPLY, CORD	1	EA	
2	PE070069	STRAIGHT-THRU BUSHING	1	EA	
3	035795-000	MODULE, IGN, GAS,SNGL	5	EA	
4	046855-000	HARNESS, IRIS, VGC5305B/366B	1	EA	Not available online / Call for pricing and availability
5	040130-000	WIRE, ELECTRODE 11"	1	EA	Not available online / Call for pricing and availability
6	018659-000	WIRE, IGNITOR, 18"	2	EA	Not available online / Call for pricing and availability
7	018633-000	WIRE IGNITOR, 28"	1	EA	
8	018632-000	WIRE, IGNITOR, 38	1	EA	
9	M0104106	CLIP-CORD VM0104106	2	EA	
10	PD020010	10 X 3/8 GREEN GROUNDING SCREW	2	EA	

Burner Box View





Item	Part No.	Name	Qty	Uom	NOTES
1	051374-000	BOX, BURNER, GAS, 30"	1	EA	Not available online / Call for pricing and availability
2	008863-000	SCREW NO.8 - 18 X 3/8, PHIL, LOW PROFILE TRUSS	13	EA	
3	051210-000	BRKT, MTG, BURNER	2	EA	Not available online / Call for pricing and availability
4	051211-000	SUPPORT, BURNER/MANIFOLD	1	EA	Not available online / Call for pricing and availability
5	039677-000	STRAIN RELIEF BRACKET	1	EA	
6	049683-000	PLUG, HOLE, NYLON, 1.00" DIA	1	EA	
7	038618-000	BRACKET, HOLD	6	EA	
8	PD020004	10X3/8PH.HD.TYPE 25 REPL PD040125	6	EA	
9	PD030029	SELF RETAINING NUT (1/4-20)	6	EA	
10	PD010027	EYE BOLT-VGSU101/161	6	EA	



Appendix A:Pages Index

Burner Box View ..... 4  
Electrical View ..... 3  
Gas Asm View ..... 2  
Surface Cooking View ..... 1



Appendix B:Parts Index

008863-000	2, 4	PA080102	2
018632-000	3	PB040199	2
018633-000	3	PB040202	2
018659-000	3	PB040255	2
019955-000	2	PB040274	2
035795-000	3	PB040275	2
038618-000	4	PB050067	2
039012-000	2	PB050069	2
039134-000	1	PB050070	2
039677-000	4	PB050071	2
039678-000	2	PB050072	2
040130-000	3	PD010012	2
040380-000	2	PD010027	4
040382-000	2	PD020004	4
040385-000	2	PD020010	3
040393-000	2	PD020159	2
040396-000	2	PD030029	4
042747-000	1	PE070069	3
044706-000	2		
044707-000	2		
044710-000	2		
044747-000	3		
046855-000	3		
049683-000	4		
051131-2529	1		
051210-000	4		
051211-000	4		
051374-000	4		
064994-000	1		
065859-000	1		
066812-000	2		
066958-000	2		
066965-000	2		
066975-000	2		
066976-000	2		
M0104106	3		
PA070004	2		
PA070005	2		
PA080099	2		
PA080100	2		