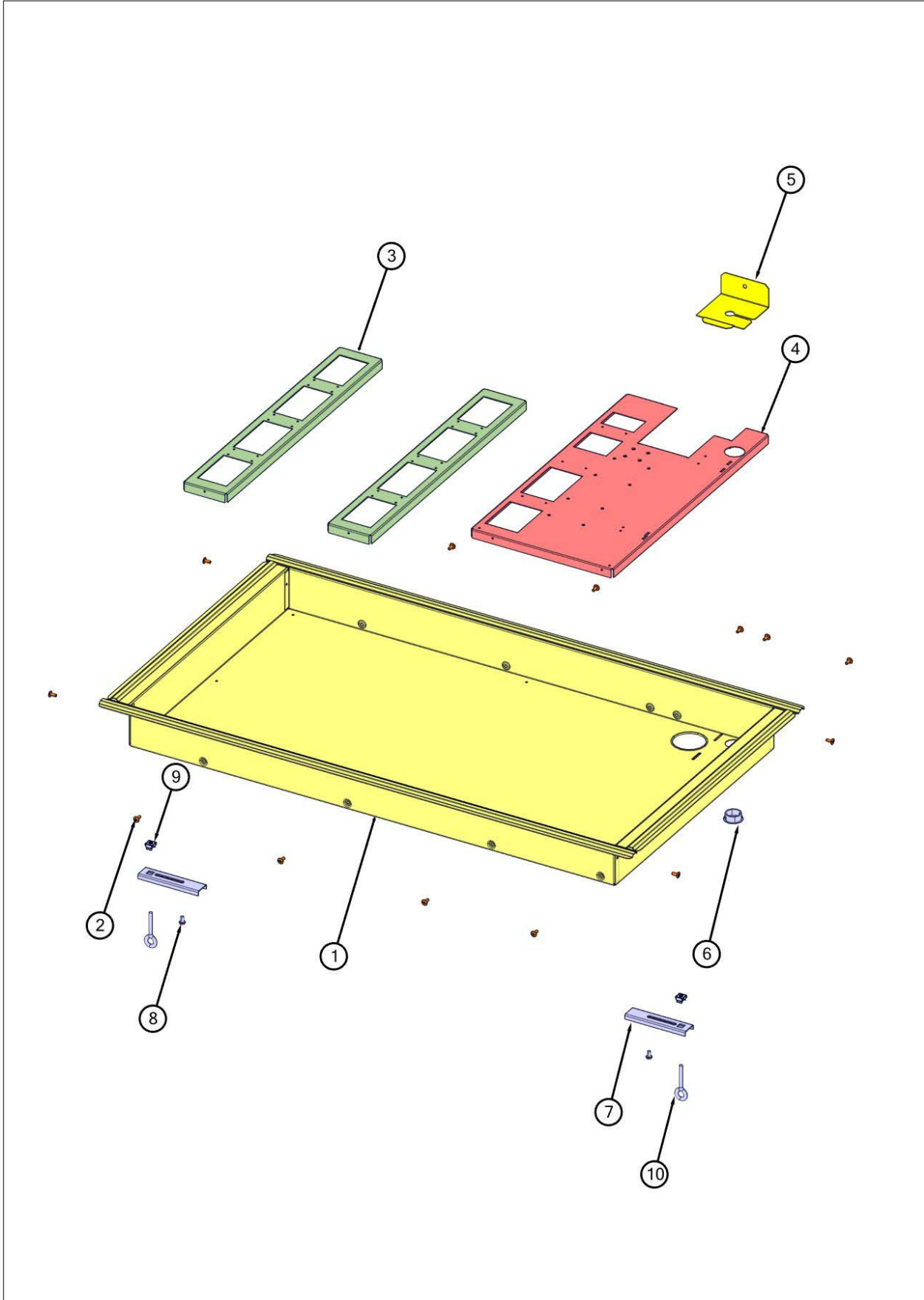


VGSU53616B

Burner Box View	1
Surface Cooking View	2
Gas Asm View	3
Electrical View	4
Appendix A:Pages Index	A
Appendix B:Parts Index	B

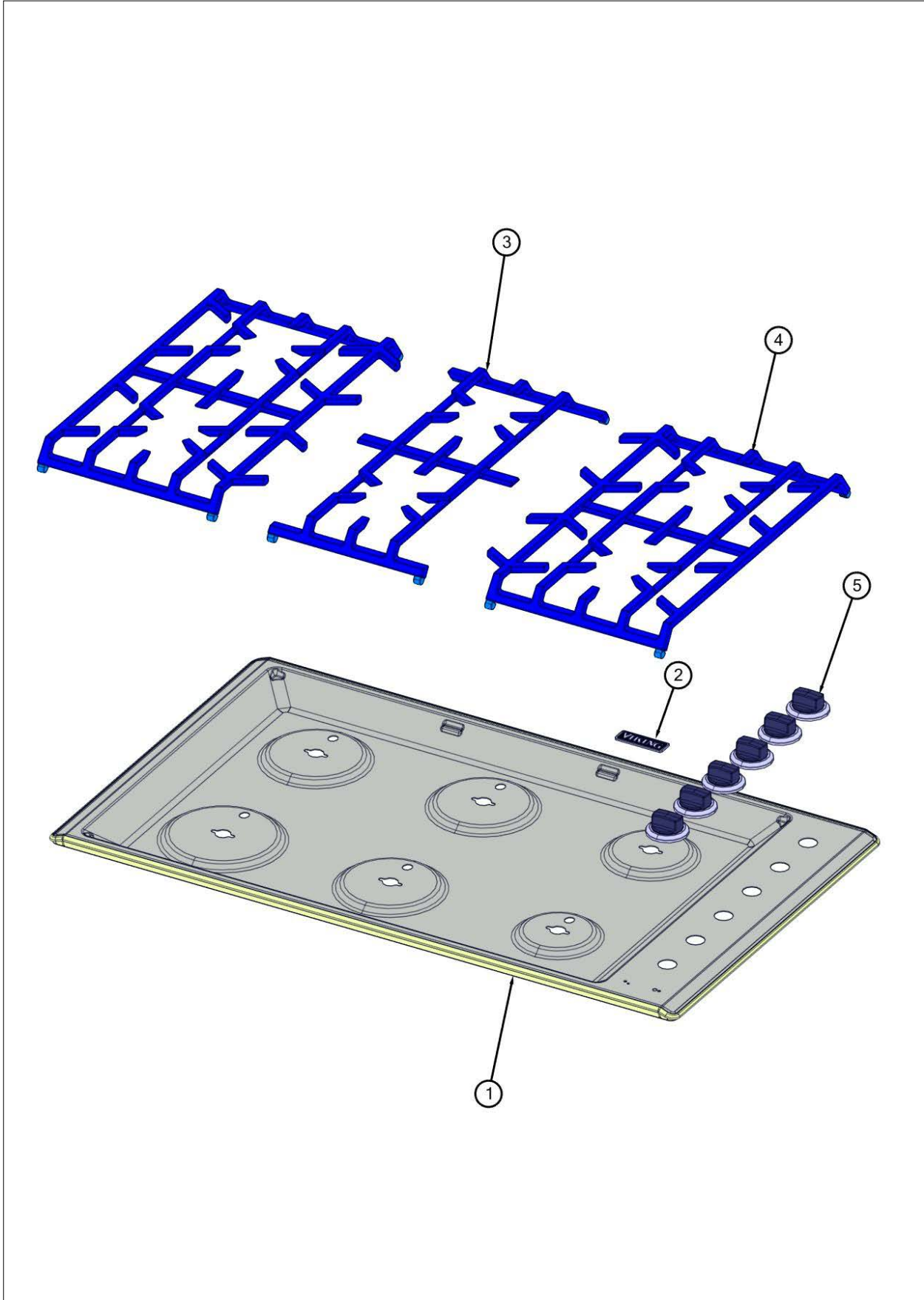
Burner Box View





Item	Part No.	Name	Qty	Uom	NOTES
1	051213-000	BOX, BURNER, GAS, 36"	1	EA	
2	008863-000	SCREW NO.8 - 18 X 3/8, PHIL, LOW PROFILE TRUSS	15	EA	
3	051210-000	BRKT, MTG, BURNER	2	EA	Not available online / Call for pricing and availability
4	051211-000	SUPPORT, BURNER/MANIFOLD	1	EA	Not available online / Call for pricing and availability
5	039677-000	STRAIN RELIEF BRACKET	1	EA	
6	049683-000	PLUG, HOLE, NYLON, 1.00" DIA	1	EA	
7	038618-000	BRACKET, HOLD	6	EA	
8	PD020004	10X3/8PH.HD.TYPE 25 REPL PD040125	6	EA	
9	PD030029	SELF RETAINING NUT (1/4-20)	6	EA	
10	PD010027	EYE BOLT-VGSU101/161	6	EA	

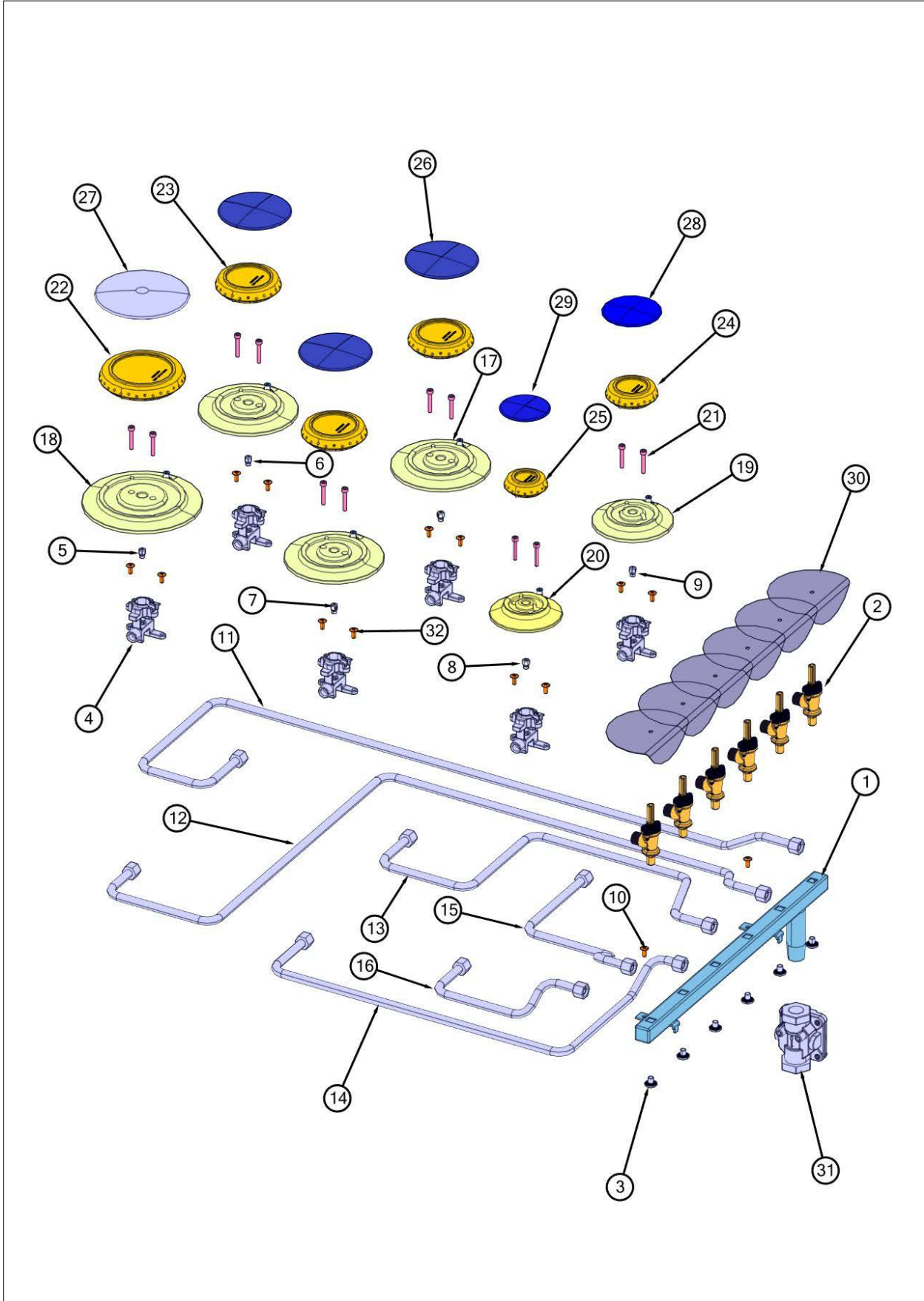
Surface Cooking View



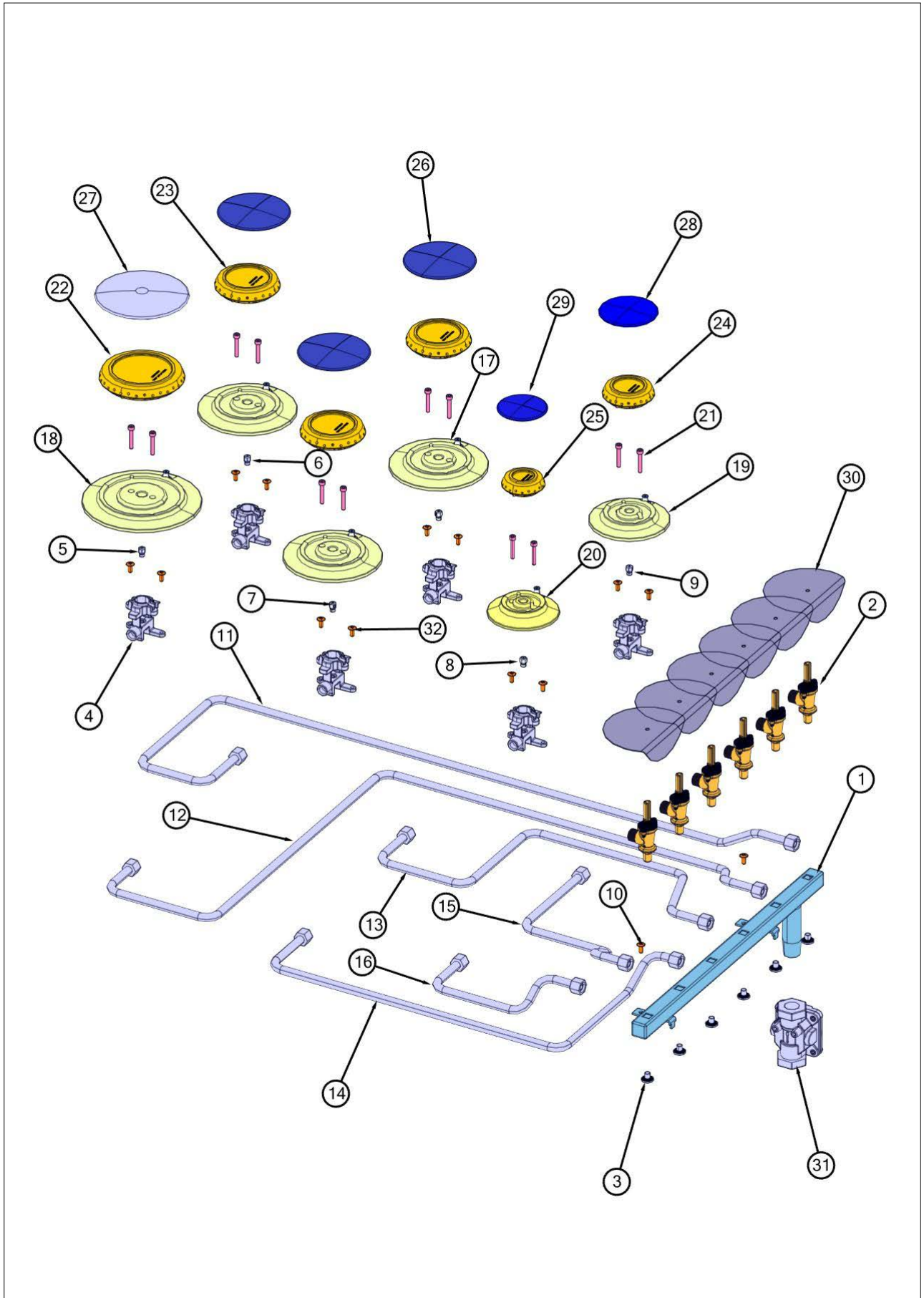


Item	Part No.	Name	Qty	Uom	NOTES
1	051023-2509	PAN, BNR, ETCHED, 36	1	EA	
2	065859-000	NAMEPLATE, VIKING, ADHESIVE W/PINS, 2.750"	1	EA	
3	042643-000	GRATE, CTR, ASM	1	EA	
NI	039134-000	GRATE FOOT	4	EA	
4	042775-000	GRATE, ASM, 36	2	EA	
NI	039134-000	GRATE FOOT	8	EA	
5	064994-000	KNOB, ASSY, VGSU BLACK CHROME	6	EA	

Gas Asm View



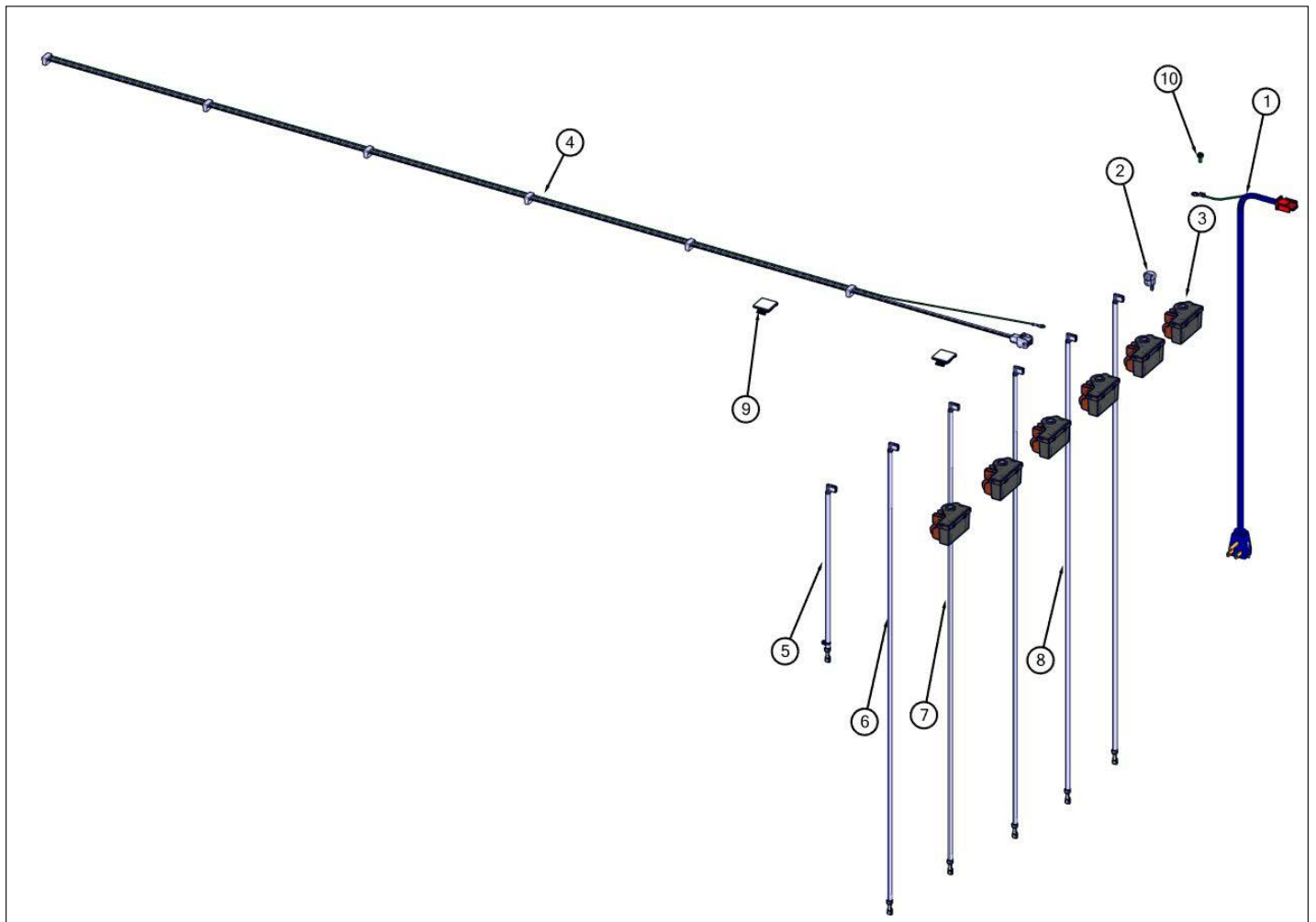
Item	Part No.	Name	Qty	Uom	NOTES
1	039541-000	MANIFOLD, GAS, 36 COOKTOP	1	EA	
2	039678-000	VALVE, COOKTOP	6	EA	
3	PD010012	VALVE BOLT 1/4-20 UNC-2B 5/16" M.S.	6	EA	
4	PB050067	JETHOLDER	6	EA	
5	044706-000	ORIFICE, STD .079 DIA - NAT	1	EA	
5	PB040199	ORIFICE NO.56	1	EA	
6	044708-000	ORIFICE, STD .056 DIA - NAT	1	EA	
6	PB040202	NO.63 ORIFICE FOR SEALED BURNER - LP	2	EA	
7	PB040255	NO.52 NAT	2	EA	
7	PB040275	NO.70 ORIFICE - LP	1	EA	
8	PB040274	NO.58 - NAT	1	EA	
8	044710-000	ORIFICE, .030 DIA - LP	1	EA	
9	044709-000	ORIFICE, STD .048 DIA - NAT	1	EA	
9	044711-000	ORIFICE .034 DIA - LP	1	EA	
10	008863-000	SCREW NO.8 - 18 X 3/8, PHIL, LOW PROFILE TRUSS	14	EA	
11	040461-000	TUBING ASM, LEFT REAR	1	EA	
12	040459-000	TUBING ASM, LEFT FRONT	1	EA	
13	040433-000	TUBING ASM, REAR CENTER	1	EA	
14	040428-000	TUBING ASM, FRONT CENTER	1	EA	
15	040425-000	TUBING ASM, RIGHT REAR	1	EA	
16	040415-000	TUBING ASM, RIGHT FRONT	1	EA	
17	PB050070	C-BASE	3	EA	
18	PB050069	D-BASE	1	EA	
19	PB050071	B-BASE	1	EA	
20	PB050072	A-BASE	1	EA	
21	PD020159	DGSU BURNER BASE SCREW	12	EA	
22	PA080102	DGRT-D COMPLETE BURNER HEAD ASSEMBLY	1	EA	
23	066812-000	HEAD, BURNER, C	3	EA	
24	PA080100	DGRT-B COMPLETE BURNER HEAD ASSEMBLY	1	EA	
25	PA080099	DGRT-ACOMPLETE BURNER HEAD ASSEMBLY	1	EA	





Item	Part No.	Name	Qty	Uom	NOTES
26	066965-000	CAP, BURNER, C, BLK	3	EA	
27	066958-000	D BURNER CAP *MATTE BLACK*	1	EA	
28	066975-000	CAP, BURNER, B, BLK	1	EA	
29	066976-000	CAP, BURNER, A, BLK	1	EA	
30	019955-000	SHIELD, WTR	6	EA	
31	PA070004	Pressure Regulator (Nat.)	1	EA	
31	PA070005	PRESSURE REG.(LP) RV47L- 77-10.0	1	EA	
32	PD020005	8 X 1/2 PH.PN.HD.SMS.	12	EA	

Electrical View





Item	Part No.	Name	Qty	Uom	NOTES
1	044747-000	CORD, SUPPLY, CORD	1	EA	
2	PE070069	STRAIGHT-THRU BUSHING	1	EA	
3	035795-000	MODULE, IGN, GAS,SNGL	1	EA	
4	046855-000	HARNESS, IRIS, VGC5305B/366B	1	EA	Not available online / Call for pricing and availability
5	040130-000	WIRE, ELECTRODE 11"	1	EA	Not available online / Call for pricing and availability
6	018659-000	WIRE, IGNITOR, 18"	1	EA	Not available online / Call for pricing and availability
7	018633-000	WIRE IGNITOR, 28"	2	EA	
8	018632-000	WIRE, IGNITOR, 38	2	EA	
9	M0104106	CLIP-CORD VM0104106	1	EA	
10	PD020010	10 X 3/8 GREEN GROUNDING SCREW	2	EA	



Appendix A:Pages Index

Burner Box View	1
Electrical View	4
Gas Asm View	3
Surface Cooking View	2



Appendix B:Parts Index

008863-000	1, 3	PA070004	3
018632-000	4	PA070005	3
018633-000	4	PA080099	3
018659-000	4	PA080100	3
019955-000	3	PA080102	3
035795-000	4	PB040199	3
038618-000	1	PB040202	3
039134-000	2, 2	PB040255	3
039541-000	3	PB040274	3
039677-000	1	PB040275	3
039678-000	3	PB050067	3
040130-000	4	PB050069	3
040415-000	3	PB050070	3
040425-000	3	PB050071	3
040428-000	3	PB050072	3
040433-000	3	PD010012	3
040459-000	3	PD010027	1
040461-000	3	PD020004	1
042643-000	2	PD020005	3
042775-000	2	PD020010	4
044706-000	3	PD020159	3
044708-000	3	PD030029	1
044709-000	3	PE070069	4
044710-000	3		
044711-000	3		
044747-000	4		
046855-000	4		
049683-000	1		
051023-2509	2		
051210-000	1		
051211-000	1		
051213-000	1		
064994-000	2		
065859-000	2		
066812-000	3		
066958-000	3		
066965-000	3		
066975-000	3		
066976-000	3		
M0104106	4		