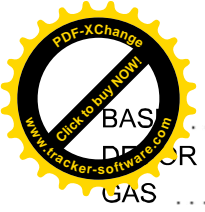
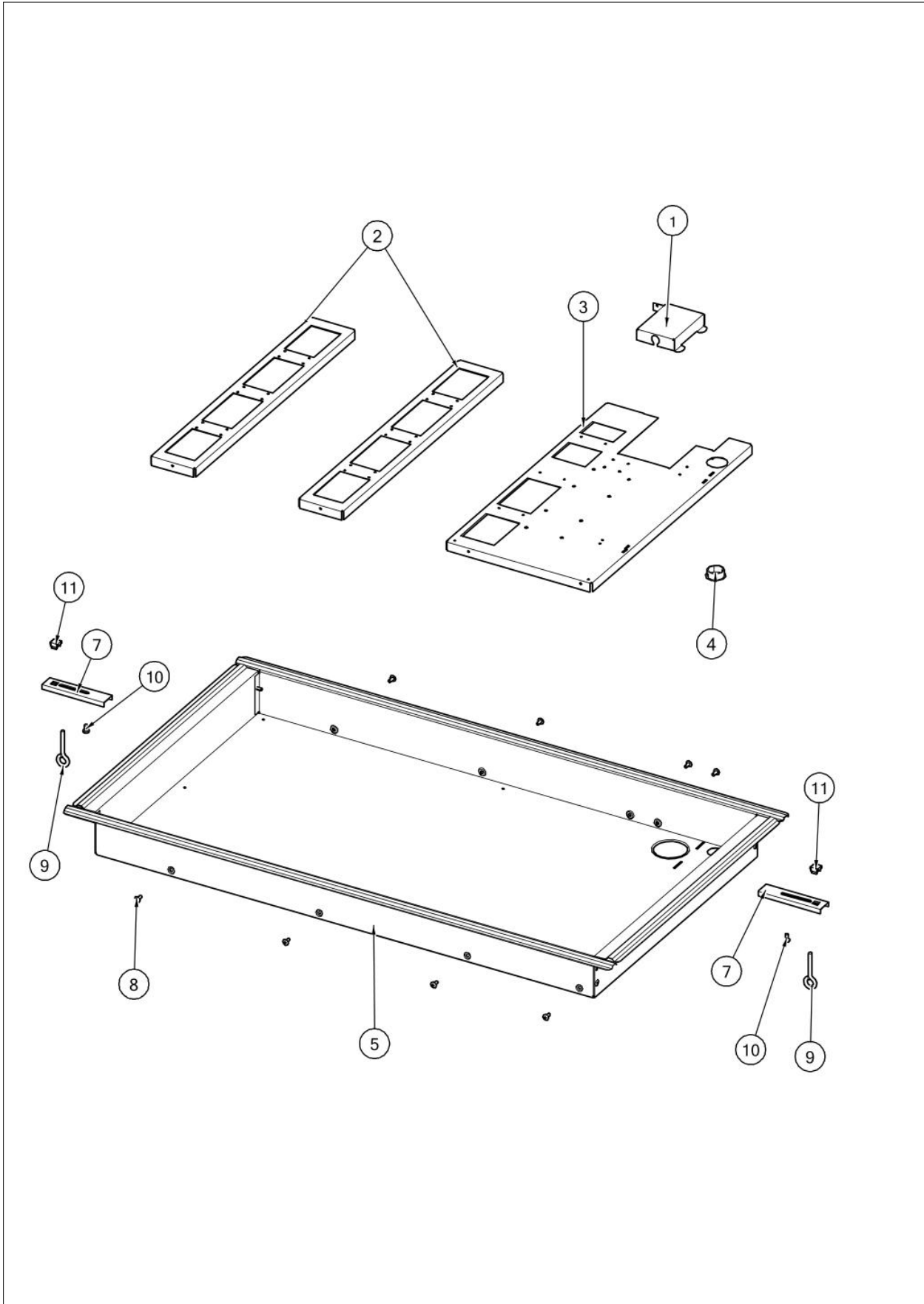


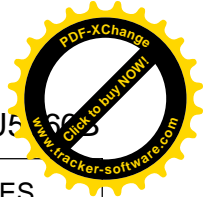


VGSU5366B

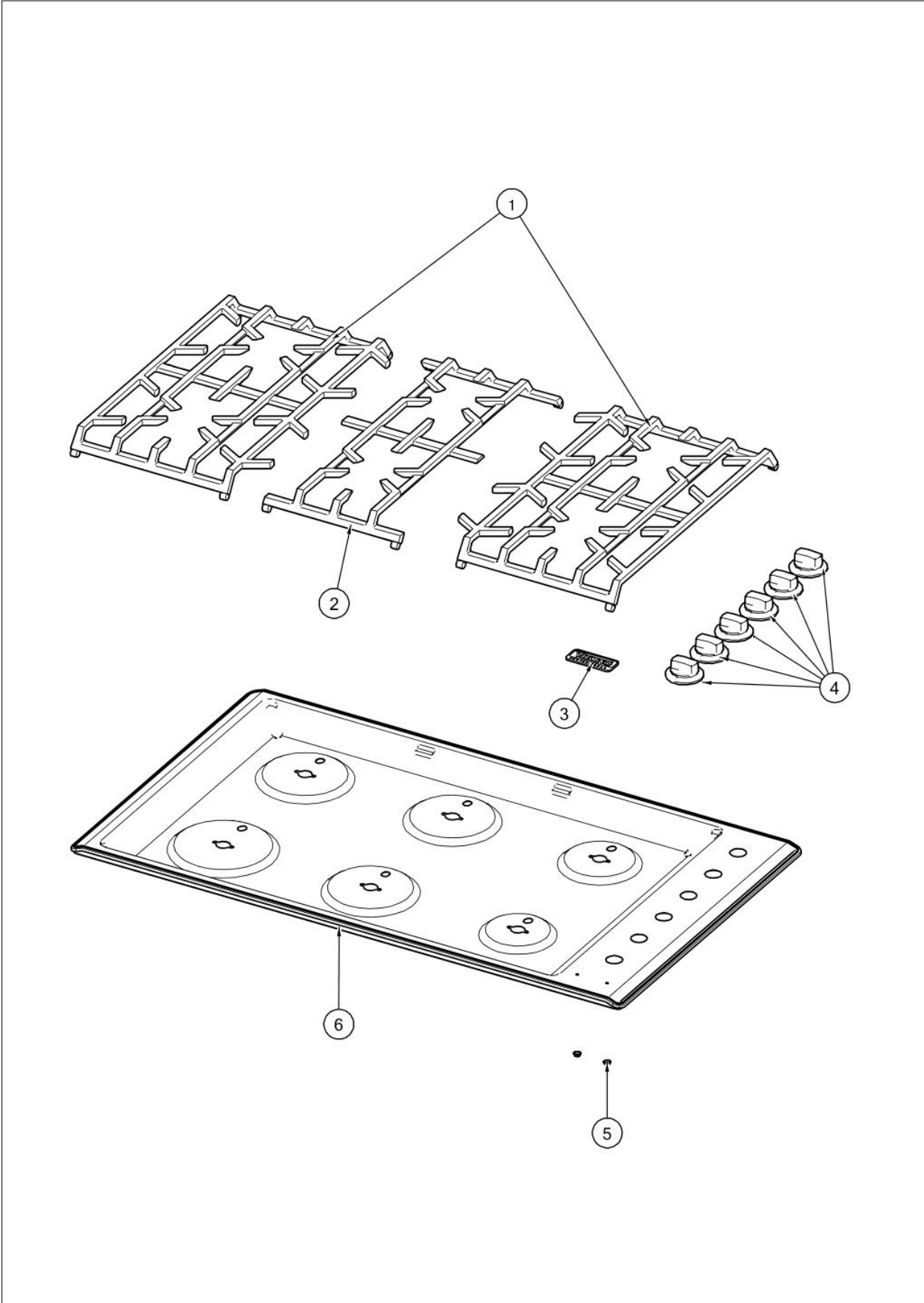


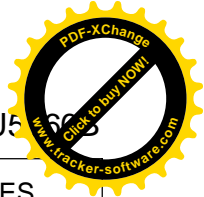
BAS	2
DEFUR	3
GAS	3
ELECTRICAL	4
Appendix A:Pages Index	A
Appendix B:Parts Index	B



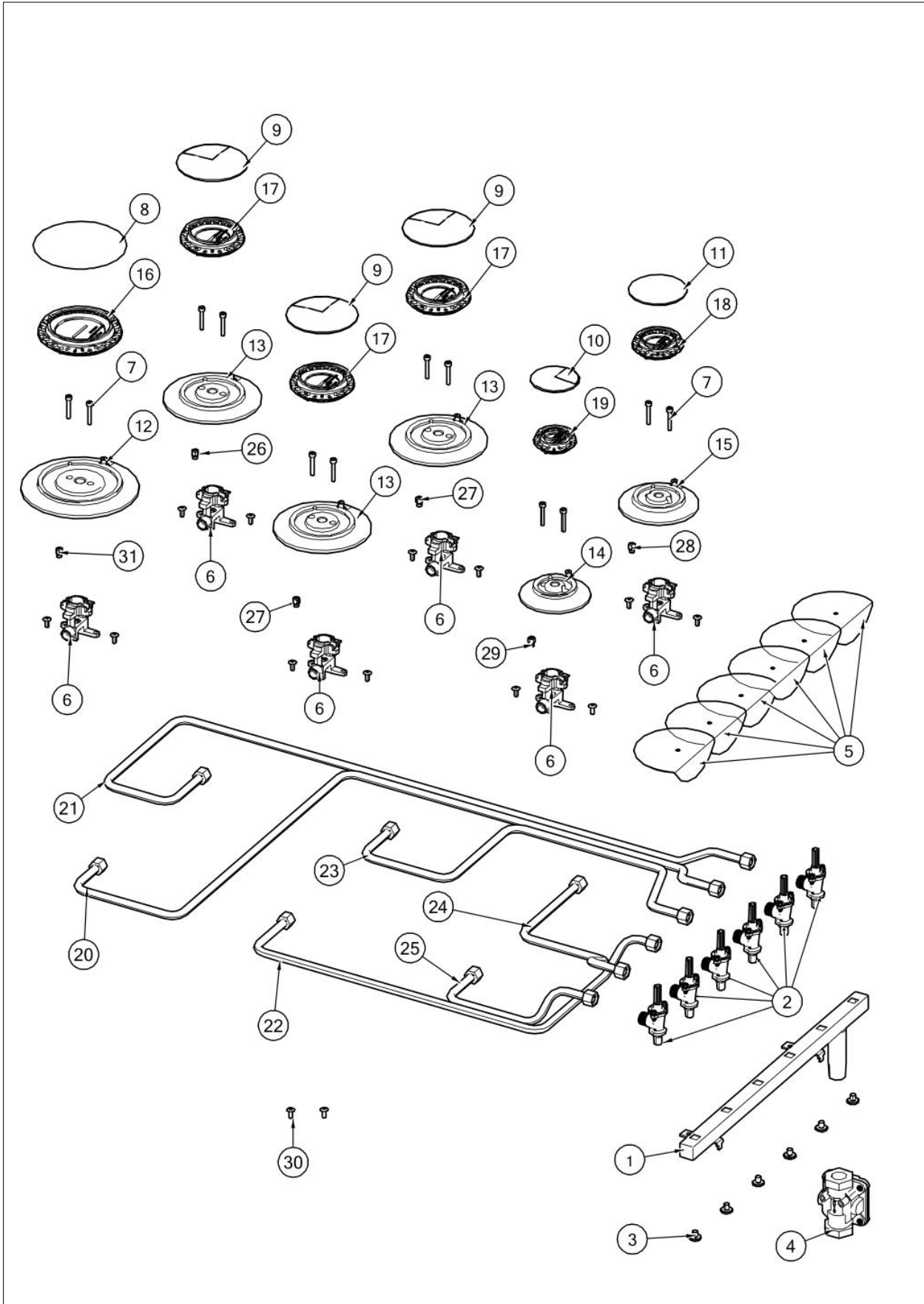


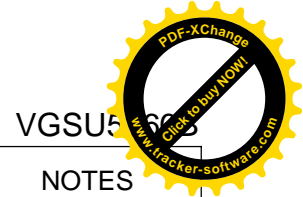
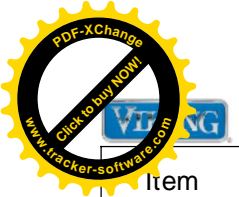
Item	Part No.	Name	Qty	Uom	NOTES
1	051212-000	STRAIN RELIEF BRACKET	1	EA	Not available online / Call for pricing and availability
2	051210-000	BRKT, MTG, BURNER	2	EA	Not available online / Call for pricing and availability
3	051211-000	SUPPORT, BURNER/MANIFOLD	1	EA	Not available online / Call for pricing and availability
4	049683-000	PLUG, HOLE, NYLON, 1.00" DIA	1	EA	
5	051213-000	BOX, BURNER, GAS, 36"	1	EA	
6	008863-000	FRAME SCREW	12	EA	
7	038618-000	BRACKET, HOLD	2	EA	
8	008863-000	FRAME SCREW	1	EA	
9	PD010027	EYE BOLT-VGSU101/161	2	EA	
10	PD020004	10X3/8PH.HD.TYPE 25 REPL PD040125	2	EA	
11	PD030029	SELF RETAINING NUT (1/4-20)	2	EA	



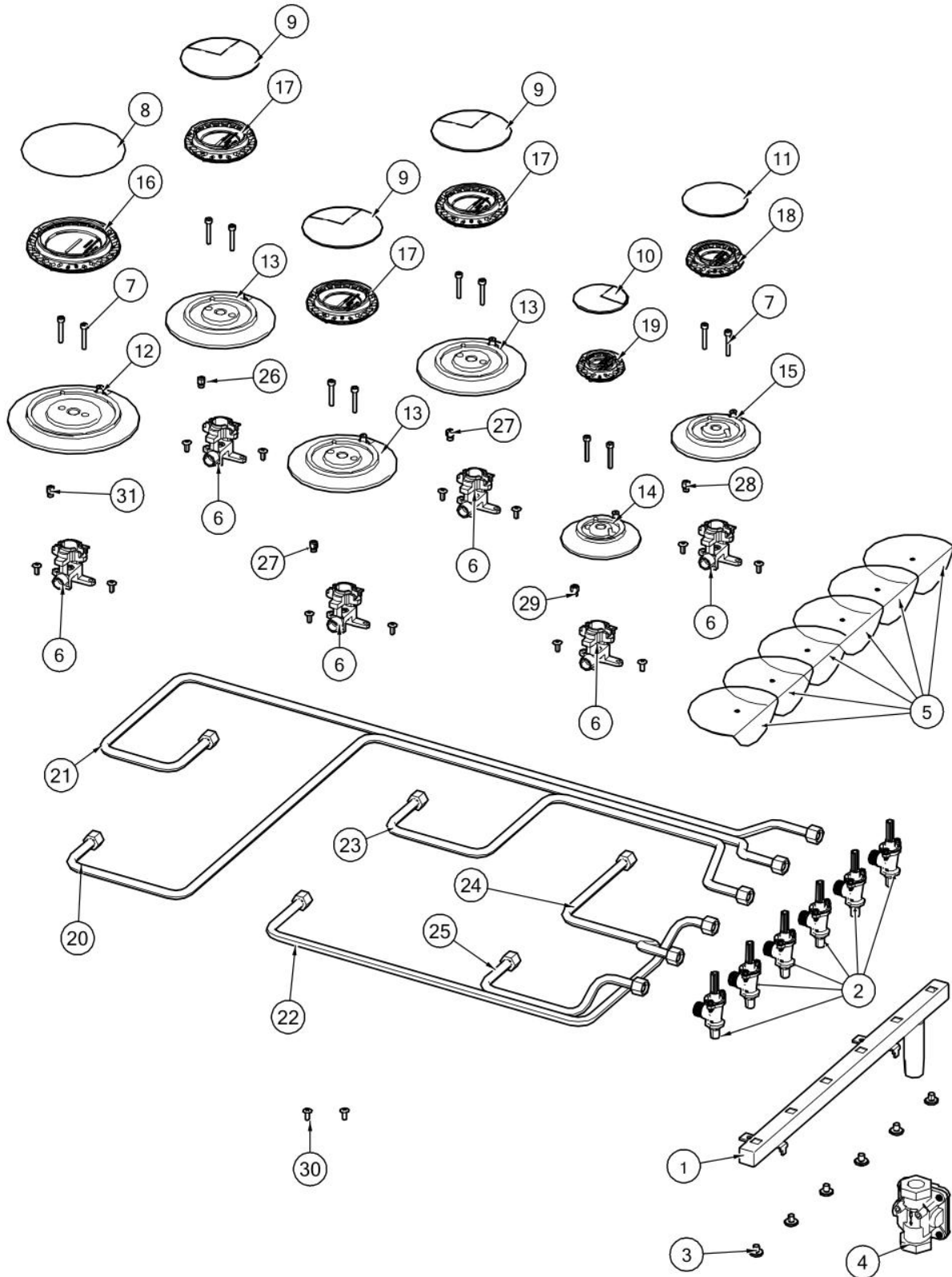


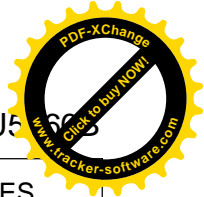
Item	Part No.	Name	Qty	Uom	NOTES
1	042775-000	GRATE, ASM, 36	2	EA	
NI	039134-000	GRATE FOOT	8	EA	
2	042643-000	GRATE, CTR, ASM	1	EA	
NI	039134-000	GRATE FOOT	4	EA	
3	PE010142	3" LOGO BK/CHROME	1	EA	
4	036416-000	KNOB,ASSY VGSU CR3	6	EA	
5	PD030006	CAPPED WASHER PAL NUT	2	EA	
6	051023-2509	PAN, BNR, ETCHED, 36	1	EA	





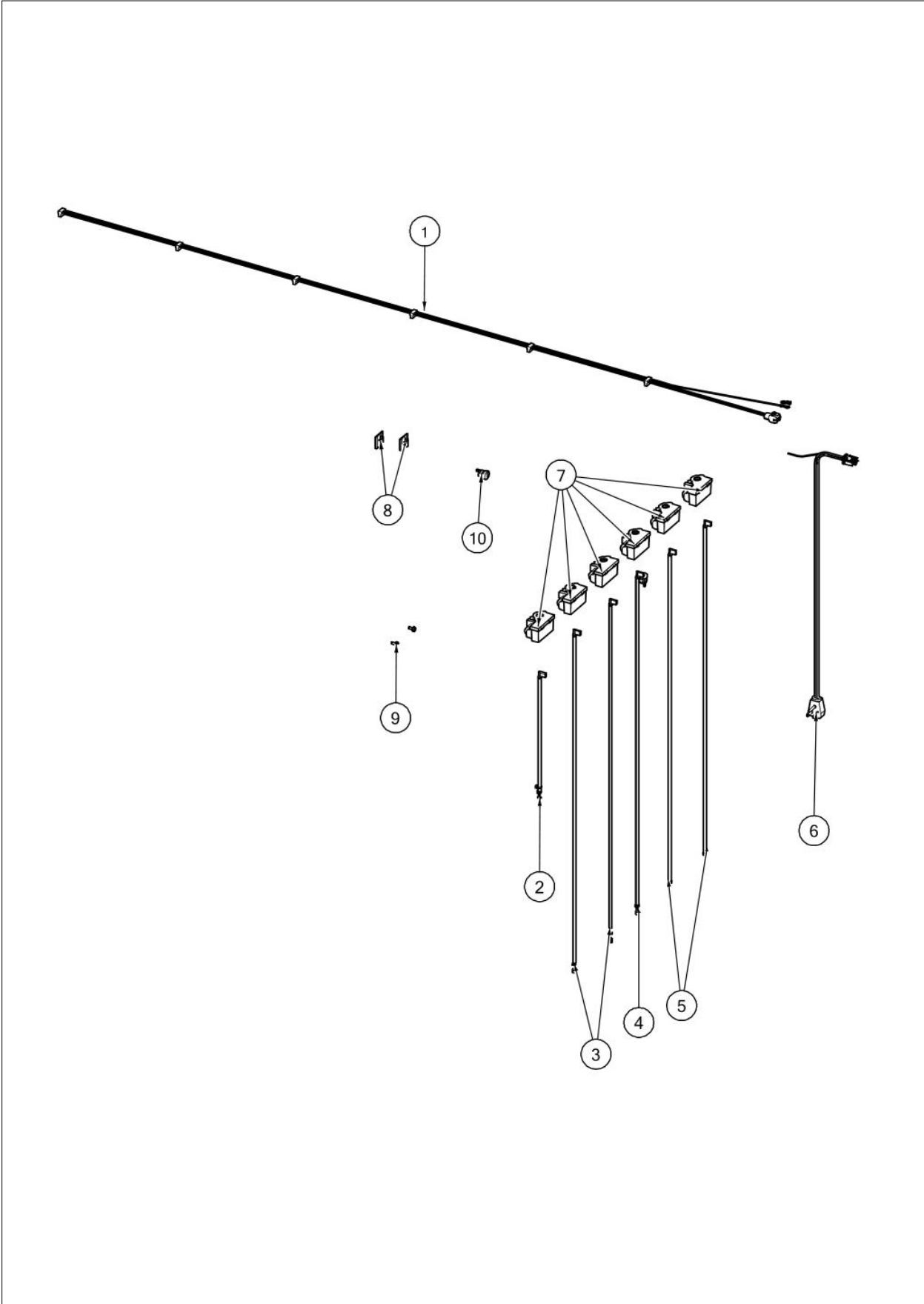
Item	Part No.	Name	Qty	Uom	NOTES
1	039541-000	MANIFOLD, GAS, 36 COOKTOP	1	EA	
2	039678-000	VALVE, COOKTOP	6	EA	
3	PD010012	1/4 x 3/8 VALVE BOLT	6	EA	
4	PA070004	Pressure Regulator (Nat.)	1	EA	
4	PA070005	PRESSURE REG.(LP) RV47L-77-10.0	1	EA	
5	019955-000	SHIELD, WTR	6	EA	
6	PB050067	JETHOLDER	6	EA	
7	PD020159	DGSU BURNER BASE SCREW	12	EA	
8	PA080083	Burner Cap - BK	1	EA	
9	PA080107	DGRT-C BURNER CAP- BLACK	3	EA	
10	PA080103	DGRT-A BURNER CAP- BLACK	1	EA	
11	PA080105	DGRT-B BURNER CAP- BLACK	1	EA	
12	PB050069	D-BASE	1	EA	
13	PB050070	C-BASE	3	EA	
14	PB050072	A-BASE	1	EA	
15	PB050071	B-BASE	1	EA	
16	PA080102	DGRT-D COMPLETE BURNER HEAD ASSEMBLY	1	EA	
17	PA080101	DGRT-C COMPLETE BURNER HEAD ASSEMBLY	3	EA	
18	PA080100	DGRT-B COMPLETE BURNER HEAD ASSEMBLY	1	EA	
19	PA080099	DGRT-A COMPLETE BURNER HEAD ASSEMBLY	1	EA	
20	040459-000	TUBING ASM, LEFT FRONT	1	EA	
21	040461-000	TUBING ASM, LEFT REAR	1	EA	
22	040428-000	TUBING ASM, FRONT CENTER	1	EA	
23	040433-000	TUBING ASM, REAR CENTER	1	EA	
24	040425-000	TUBING ASM, RIGHT REAR	1	EA	
25	040415-000	TUBING ASM, RIGHT FRONT	1	EA	
26	044708-000	ORIFICE, STD .056 DIA - NAT	1	EA	
26	044711-000	ORIFICE .034 DIA - LP	1	EA	
27	PB040255	NO.52 NAT	2	EA	
27	PB040202	NO.63 ORIFICE FOR SEALED BURNER - LP	2	EA	

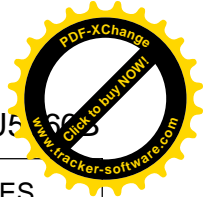




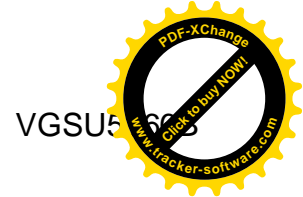
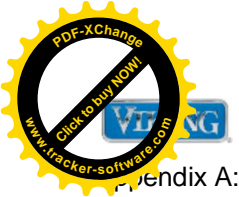
Item	Part No.	Name	Qty	Uom	NOTES
28	044709-000	ORIFICE, STD .048 DIA - NAT	1	EA	
28	044710-000	ORIFICE, .030 DIA - LP	1	EA	
29	PB040274	NO.58 - NAT	1	EA	
29	PB040275	NO.70 ORIFICE - LP	1	EA	
30	008863-000	FRAME SCREW	14	EA	
31	044706-000	ORIFICE, STD .079 DIA - NAT	1	EA	
31	PB040199	ORIFICE NO.56	1	EA	

ELECTRICAL



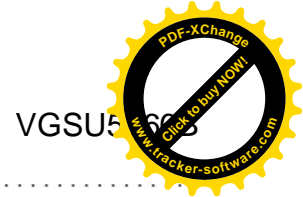
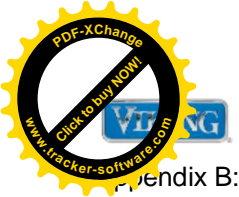


Item	Part No.	Name	Qty	Uom	NOTES
1	046855-000	HARNESS, IRIS, VGC5305B/366B	1	EA	Not available online / Call for pricing and availability
2	040130-000	WIRE, ELECTRODE 11"	1	EA	Not available online / Call for pricing and availability
3	018659-000	WIRE, IGNITOR, 18"	2	EA	Not available online / Call for pricing and availability
4	018633-000	WIRE IGNITOR, 28"	1	EA	
5	018632-000	WIRE, IGNITOR, 38	2	EA	
6	044747-000	CORD, SUPPLY, CORD	1	EA	
7	035795-000	MODULE, IGN, GAS,SNGL	6	EA	
8	M0104106	CLIP-CORD VM0104106	2	EA	
9	PD020010	10 X 3/8 GREEN GROUNDING SCREW	2	EA	
10	PE070069	STRAIGHT-THRU BUSHING	1	EA	



Appendix A:Pages Index

BASE	1
DECOR	2
ELECTRICAL	4
GAS	3



VGSU5663

Appendix B: Parts Index

008863-000	1, 1, 3	PA080102	3
018632-000	4	PA080103	3
018633-000	4	PA080105	3
018659-000	4	PA080107	3
019955-000	3	PB040199	3
035795-000	4	PB040202	3
036416-000	2	PB040255	3
038618-000	1	PB040274	3
039134-000	2, 2	PB040275	3
039541-000	3	PB050067	3
039678-000	3	PB050069	3
040130-000	4	PB050070	3
040415-000	3	PB050071	3
040425-000	3	PB050072	3
040428-000	3	PD010012	3
040433-000	3	PD010027	1
040459-000	3	PD020004	1
040461-000	3	PD020010	4
042643-000	2	PD020159	3
042775-000	2	PD030006	2
044706-000	3	PD030029	1
044708-000	3	PE010142	2
044709-000	3	PE070069	4
044710-000	3		
044711-000	3		
044747-000	4		
046855-000	4		
049683-000	1		
051023-2509	2		
051210-000	1		
051211-000	1		
051212-000	1		
051213-000	1		
M0104106	4		
PA070004	3		
PA070005	3		
PA080083	3		
PA080099	3		
PA080100	3		
PA080101	3		