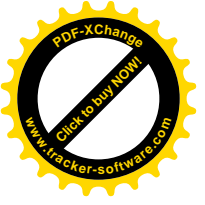


VIRB304JMAG-RSERIES

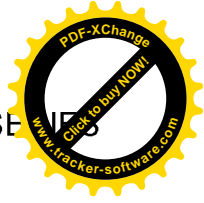


1091007 POWER CORD	3
CONTROL AREA	4
DELI DRAWER	5
DOOR SKIN AREA	5
EVAPORATOR AREA	6
LOWER UNIT AREA	7
MC COVER AND UPPER GRILLE AREA	8
MEAT SAVER DRAWER	9
PE070785 HIGH VOLT HARNESS	10
PE070877 MACHINE HARNESS	11
PE970464 LOW VOLT HARNESS	12
PE970609 CONTROL BOARD HARNESS	13
PE970641 FAN RESISTOR JUMPER	14
PRODUCE AREA	15
REFRIGERANT SYSTEM	16
REFRIGERATOR COMPARTMENT	17
REFRIGERATOR DOOR FOAM AREA	18
REFRIGERATOR SHELVING	19
UNIT EXTERIOR	20
UPPER UNIT AREA	A
Appendix A:Pages Index	B
Appendix B:Parts Index	

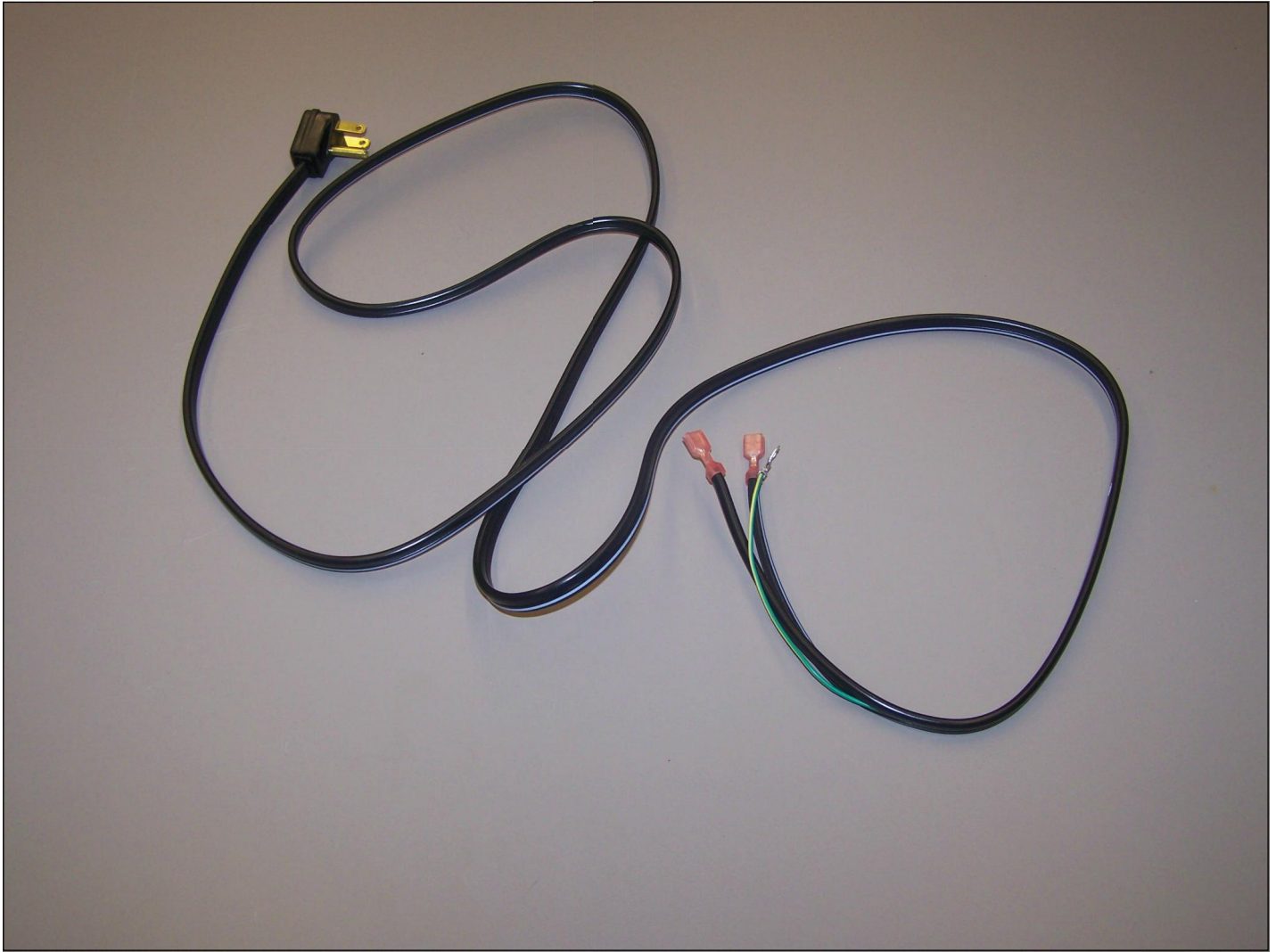




VIRB304JMAG-RSE

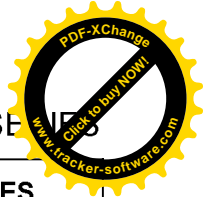


916507 POWER CORD





VIRB304JMAG-RSE

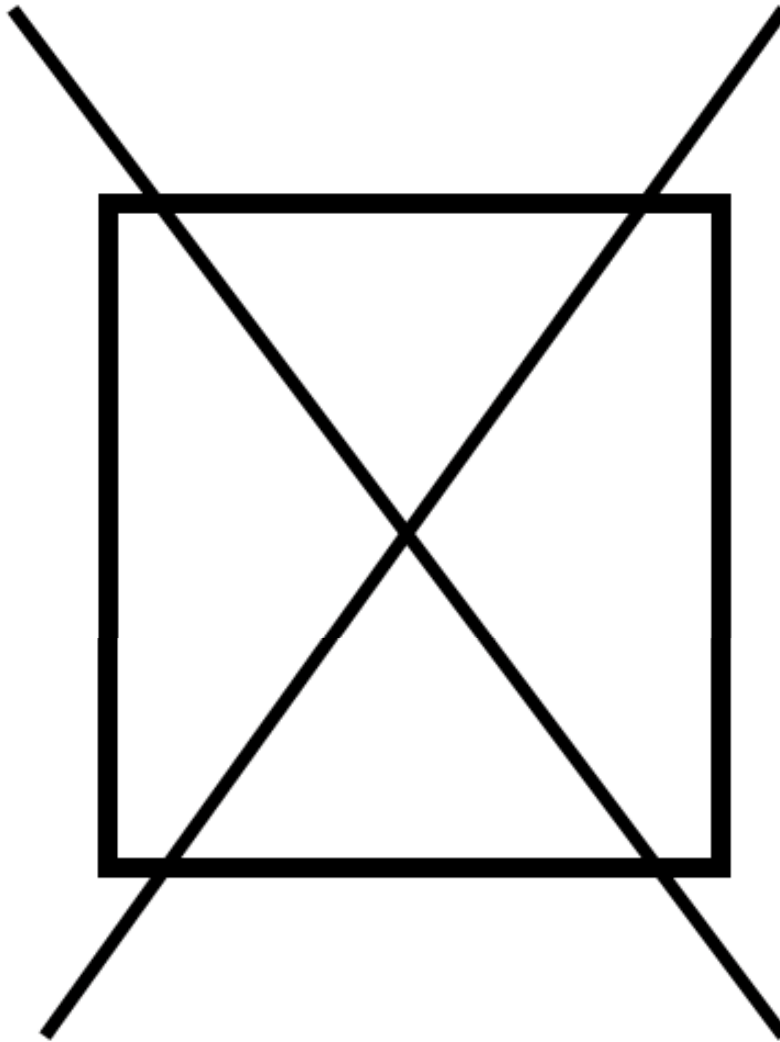


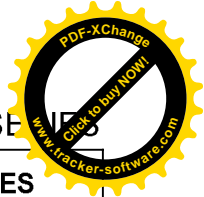
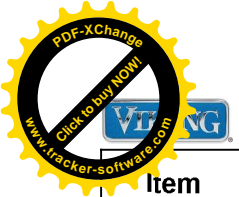
Item	Part No.	Name	Qty	Uom	NOTES
1	10916507	CORD-POWER 5 SERIES	1	EA	



CONTROL AREA

NON ILLUSTRATED PART





Item	Part No.	Name	Qty	Uom	NOTES
1	PE950183	SWITCH OVERLAY AR 30	1	EA	
2	PE950122	SWITCH	1	EA	
3	PK030457	PANEL CONTROL AR 30 L	1	EA	
Not Shown	PK030456	PANEL CONTROL AR 30 R	1	EA	
4	12064001	SUPP-CONT PANEL	1	EA	
5	PC040010	POP RIVET (.063/GR -.125) GAMD42-A	1	EA	
6	M0224128	SCREW-SM	1	EA	
7	PD020194	SCR, HEX SRTD WSHR HD, #8- 18 X 1/2	1	EA	
8	K20910061	CONTROL BOX FRONT	1	EA	
9	PE950149	SWITCH POWER	1	EA	
10	K2098654	Bracket, Power Switch	1	EA	
11	M0238846	SCREW-SHLDR	1	EA	
12	PE070728	BOARD LOW VOLTAGE	1	EA	

Comments for Part Num. PE070728

bradleysapplianceservice@shaw.ca on Apr 27, 2016

COULD ALSO USE: 002670-000 LOW VOLTAGE BOARD KIT ANALOG - INCLUDES WIRE HARNESS

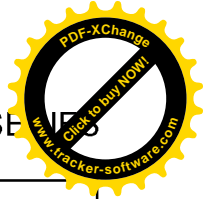
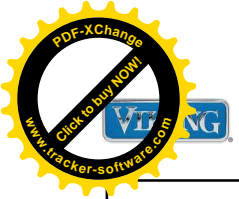
13	PD020013	TYPE "AB" #6 X 3/8 PH PAN HD. SMS	1	EA	
14	M0585506	SUPPORT	1	EA	
15	M0104106	CLIP-CORD VM0104106	1	EA	
16	K2099402	CONTROL BOX	1	EA	
17	A4554817	BUSHING-SNAP VA4554817	1	EA	
18	PM910325	FILM, PROTECTIVE	1	EA	
19	M0585504	SUPPORT	1	EA	
20	005319-000	POWER CONTROL BOARD ASM 5 SERIES	1	EA	

Comments for Part Num. 005319-000

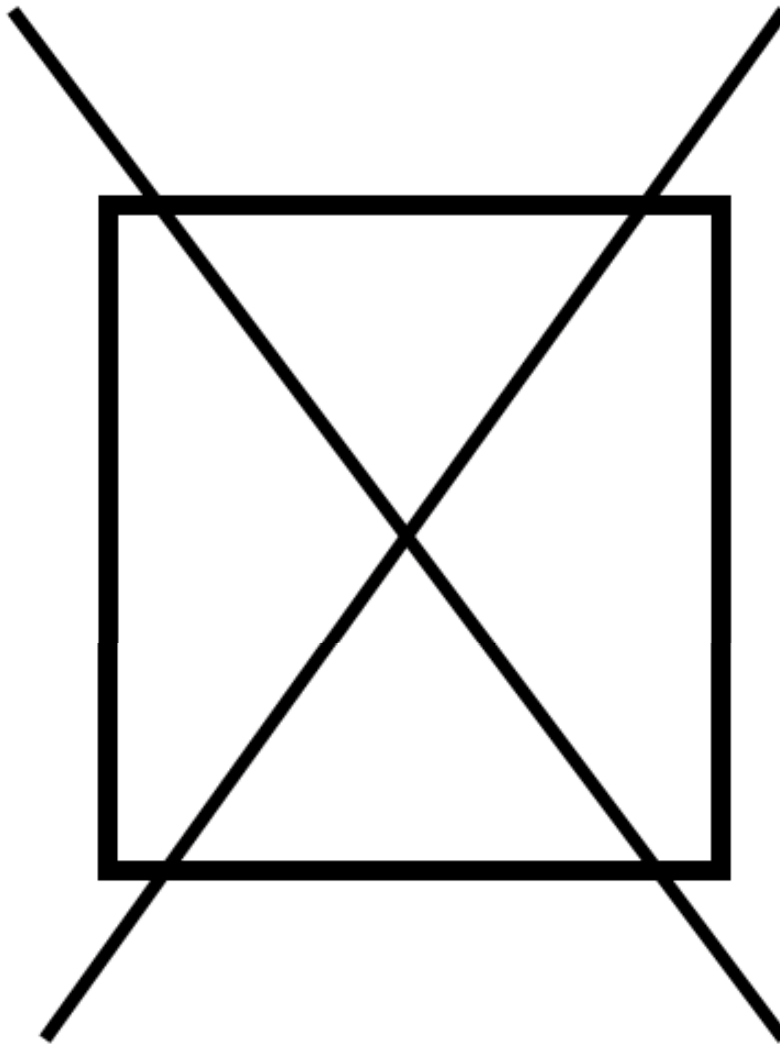
boltz on Apr 12, 2018

See TR-0056-SP Bulletin

21	K20915000	CONTROL BOX TOP	1	EA	
22	M0288120	NUT-SPEED VM0288120	1	EA	



NON ILLUSTRATED PART

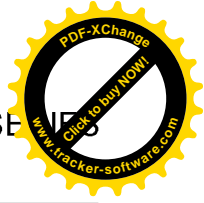




VIRB304JMAG-RSE

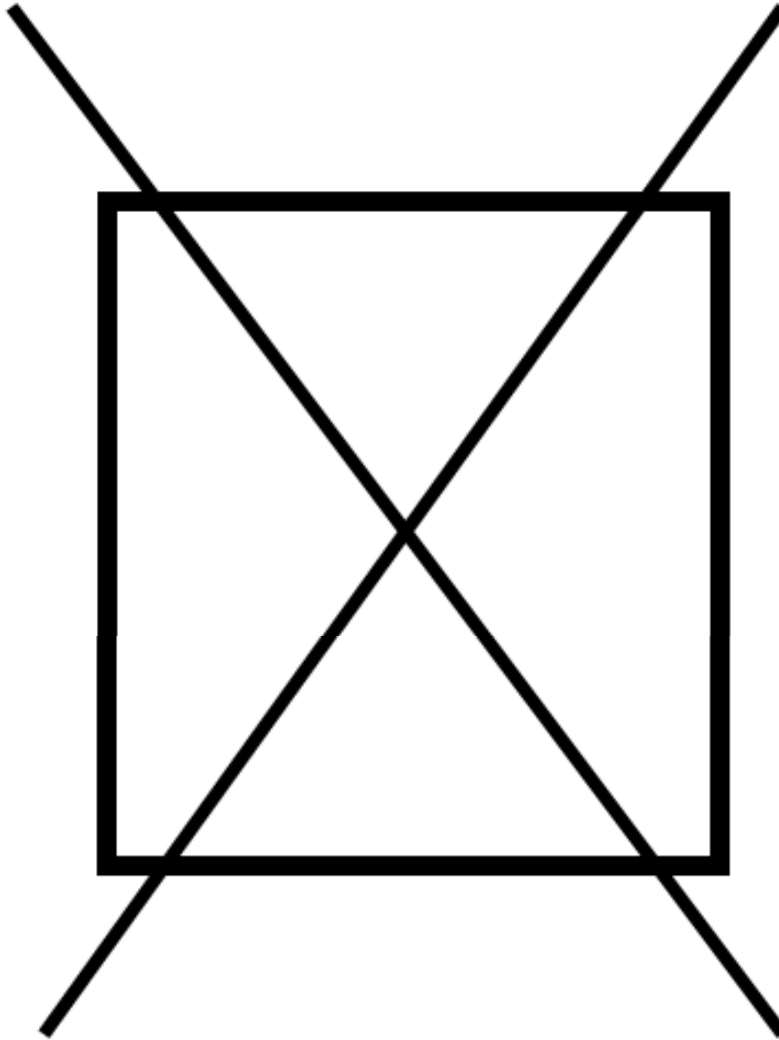


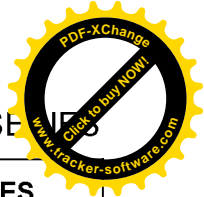
Item	Part No.	Name	Qty	Uom	NOTES
23	K20910060	BRACKET - PC	1	EA	
24	A3030361	GASKET RED	1	EA	



LI DRAWER

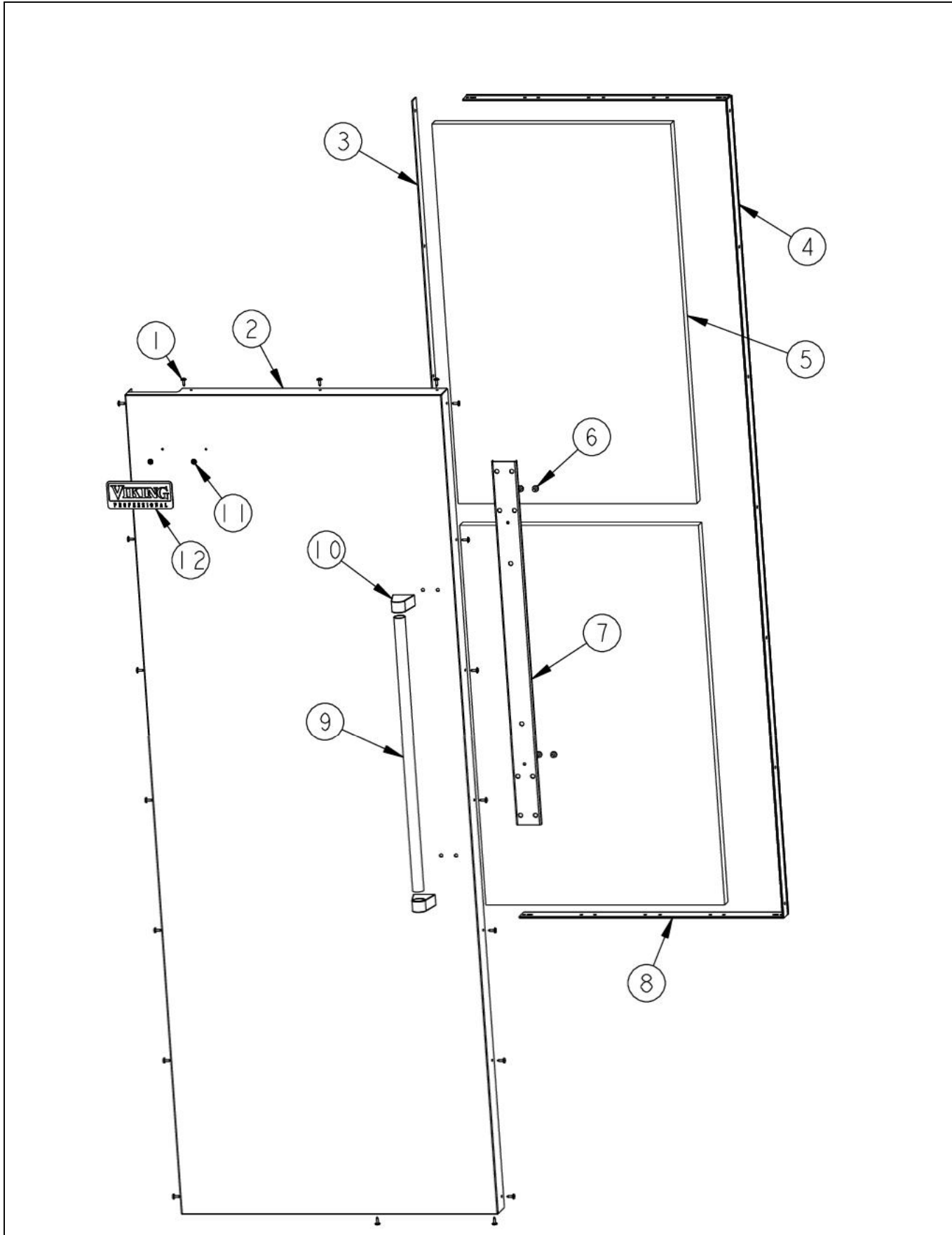
NON
ILLUSTRATED PART

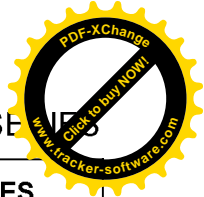




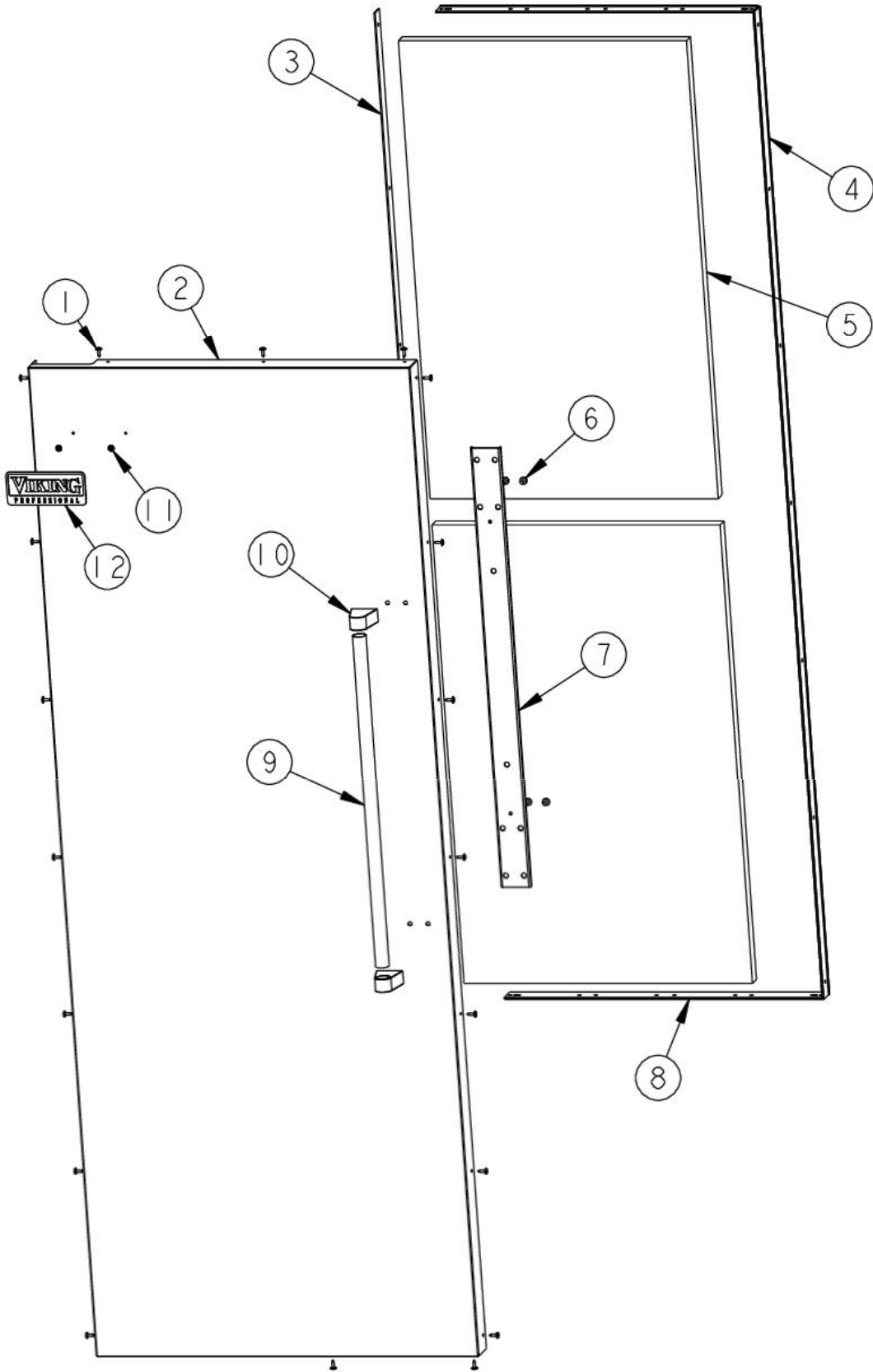
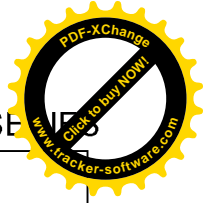
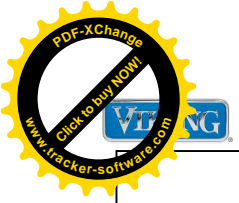
Item	Part No.	Name	Qty	Uom	NOTES
1	PM910342	RAIL DRAWER L	1	EA	
2	044219-000	SUPPORT SLIDE L	1	EA	
3	043624-000	SHELF ASM GLASS 30 AR 48 FF	1	EA	
4	PD920161	SCR 8-16 PLASTITE PNP 3/8 S	1	EA	
5	PK030439	GLIDE CENTER SUPPORT	1	EA	
6	046255-000	SLIDE, DWR SOFT CLOSE LH	2	EA	
7	PD020032	SRW-8(A)X3/8"PH.WFR HD 7/16DIA*NICL	1	EA	
8	044214-000	SUPPORT SLIDE R	1	EA	
9	PM910343	RAIL DRAWER R	1	EA	
10	PK930305	DRAWER DELI AR 30 SXS 48	2	EA	
11	046235-000	SLIDE, DWR SOFT CLOSE RH	2	EA	

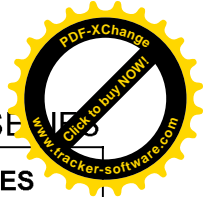
FOR SKIN AREA



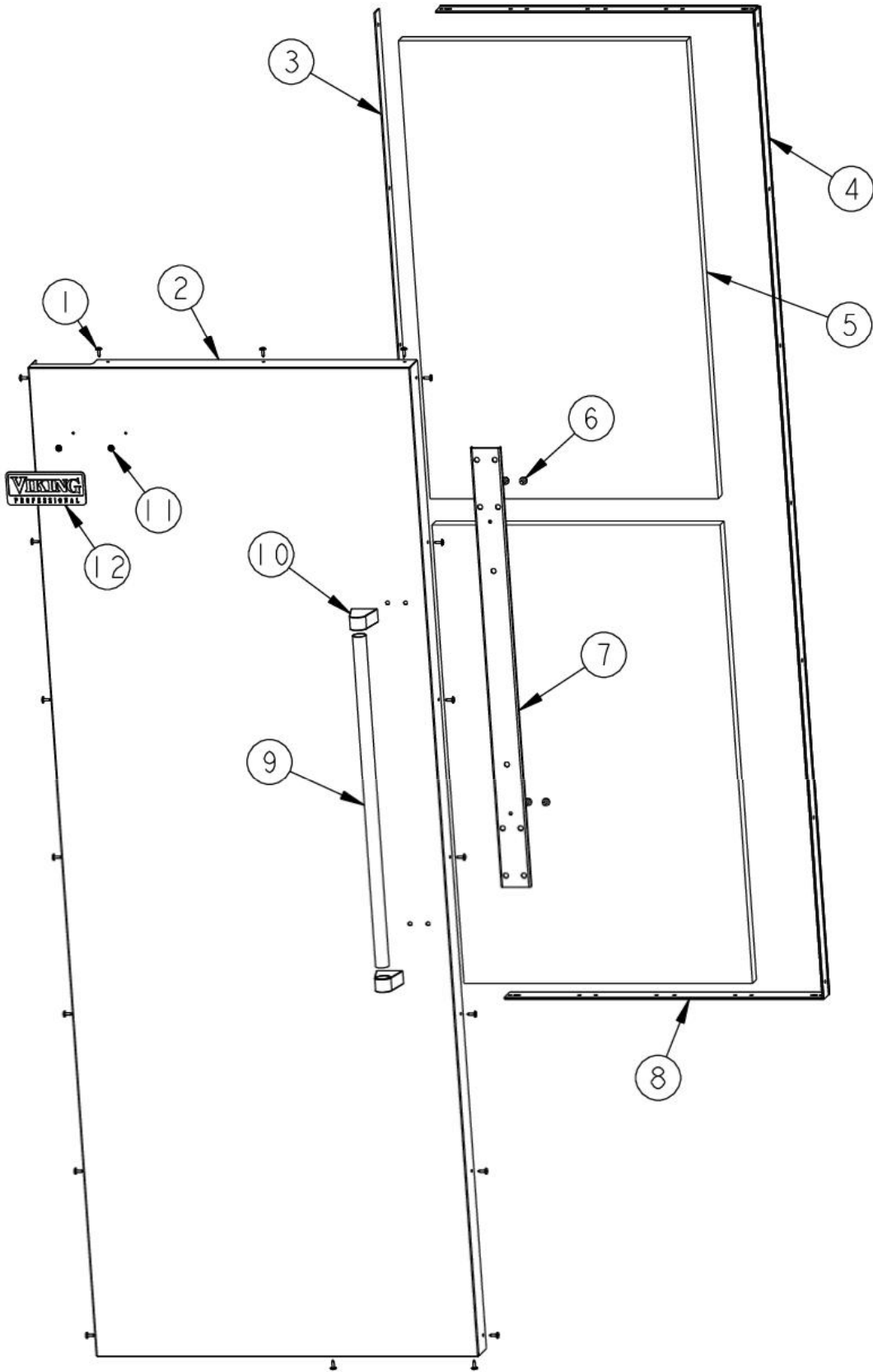


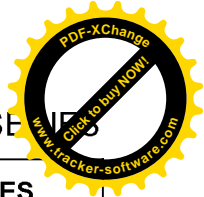
Item	Part No.	Name	Qty	Uom	NOTES
1	M0210458	SCR 8-18 X 5/8 WAFER PH SMS	1	EA	
2	003617-000	SKIN,DOOR, AF AR 30 PROI R SS	1	EA	
Not Shown	003618-006WH	DOOR SKIN - RIGHT HINGE (WH)	1	EA	Not available online / Call for pricing and availability
Not Shown	003618-007AL	DOOR SKIN - RIGHT HINGE (AL)	1	EA	Not available online / Call for pricing and availability
Not Shown	NOTE	(Before 01/01/08)		EA	
Not Shown	003618-003BT	DOOR SKIN - RIGHT HINGE (BT)	1	EA	Not available online / Call for pricing and availability
Not Shown	NOTE	(Before 01/01/08)		EA	
Not Shown	003618-014EP	DOOR SKIN - RIGHT HINGE (EP)	1	EA	Not available online / Call for pricing and availability
Not Shown	NOTE	(Before 01/01/08)		EA	
Not Shown	003618-011FG	DOOR SKIN - RIGHT HINGE (FG)	1	EA	Not available online / Call for pricing and availability
Not Shown	NOTE	(Before 01/01/08)		EA	
Not Shown	003618-002BK	DOOR SKIN - RIGHT HINGE (BK)	1	EA	Not available online / Call for pricing and availability
Not Shown	003618-008BU	DOOR SKIN - RIGHT HINGE (BU)	1	EA	Not available online / Call for pricing and availability
Not Shown	003618-013CB	DOOR SKIN - RIGHT HINGE (CB)	1	EA	Not available online / Call for pricing and availability
Not Shown	003618-005GG	DOOR SKIN - RIGHT HINGE (GG)	1	EA	Not available online / Call for pricing and availability



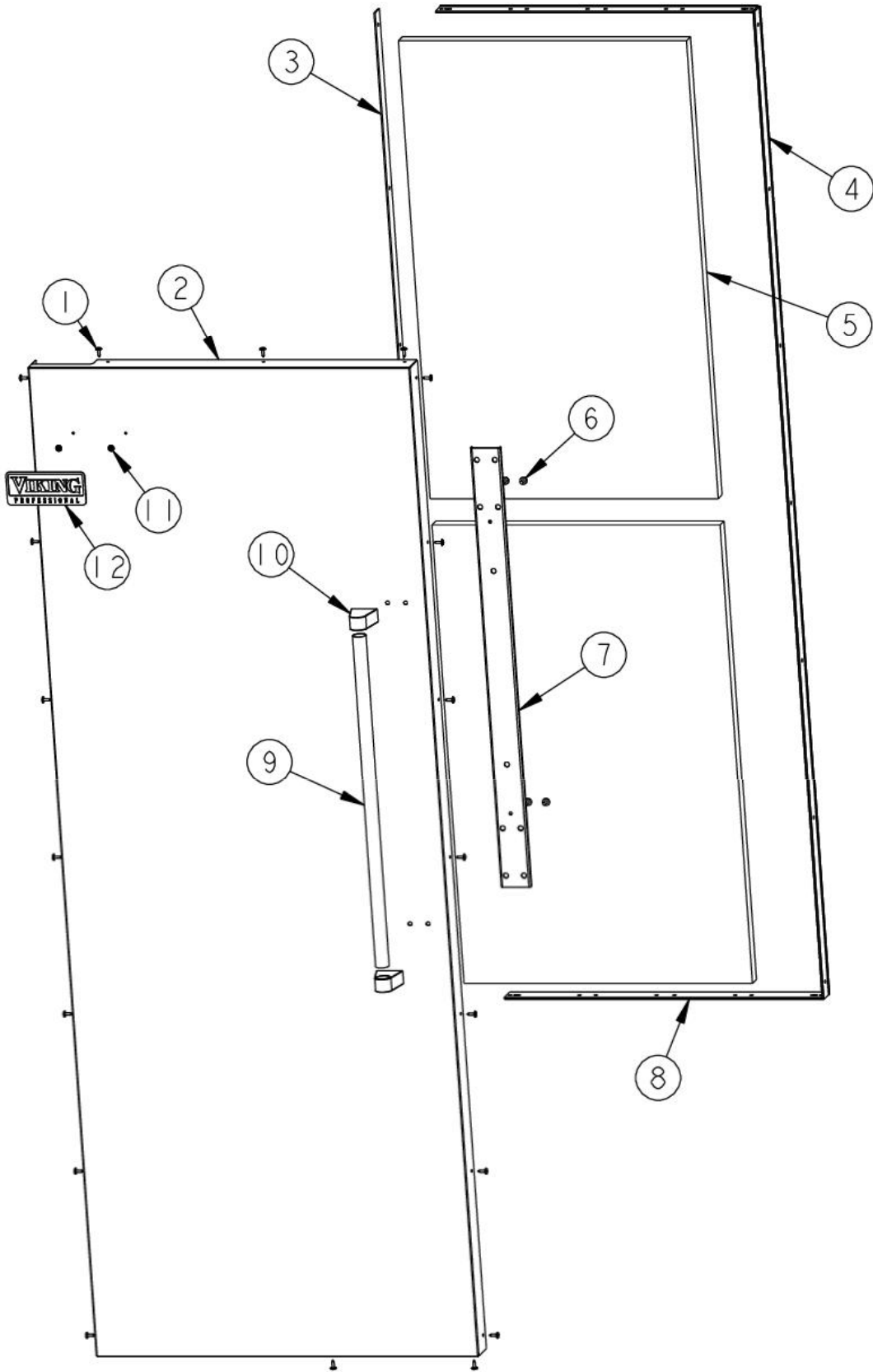
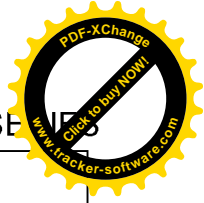
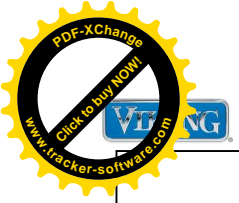


Item	Part No.	Name	Qty	Uom	NOTES
Not Shown	003618-004SG	DOOR SKIN - RIGHT HINGE (SG)	1	EA	Not available online / Call for pricing and availability
Not Shown	003618-012VB	DOOR SKIN - RIGHT HINGE (VB)	1	EA	Not available online / Call for pricing and availability
Not Shown	003618-024AR	DOOR SKIN - RIGHT HINGE (AR)	1	EA	Not available online / Call for pricing and availability
Not Shown	NOTE	(After 01/01/08)		EA	
Not Shown	003618-016CH	DOOR SKIN - RIGHT HINGE (CH)	1	EA	Not available online / Call for pricing and availability
Not Shown	NOTE	(After 01/01/08)		EA	
Not Shown	003618-018CW	DOOR SKIN - RIGHT HINGE (CW) - NLA	1	EA	Not available online / Call for pricing and availability
Not Shown	NOTE	(After 01/01/08)		EA	
Not Shown	003618-020GM	DOOR SKIN - RIGHT HINGE (GM)	1	EA	Not available online / Call for pricing and availability
Not Shown	NOTE	(After 01/01/08)		EA	
Not Shown	003618-023IB	DOOR SKIN - RIGHT HINGE (IB)	1	EA	Not available online / Call for pricing and availability
Not Shown	NOTE	(After 01/01/08)		EA	
Not Shown	003618-027MS	DOOR SKIN - RIGHT HINGE (MS)	1	EA	Not available online / Call for pricing and availability
Not Shown	NOTE	(After 01/01/08)		EA	
Not Shown	003618-019OG	DOOR SKIN - RIGHT HINGE (OG)	1	EA	Not available online / Call for pricing and availability
Not Shown	NOTE	(After 01/01/08)		EA	



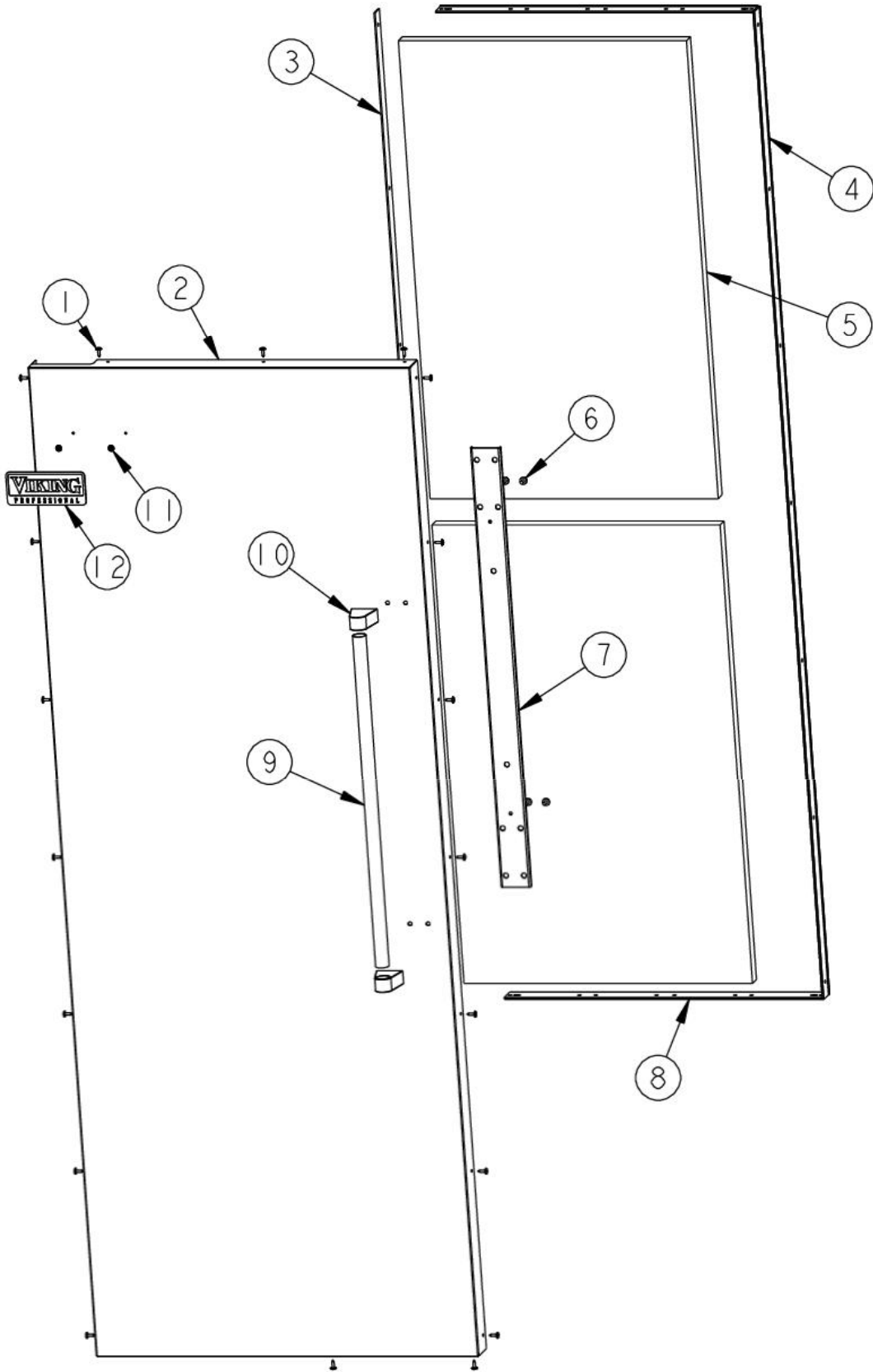


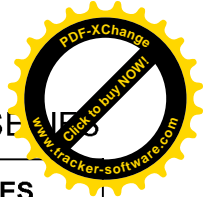
Item	Part No.	Name	Qty	Uom	NOTES
Not Shown	003618-015PL	DOOR SKIN - RIGHT HINGE (PL)	1	EA	Not available online / Call for pricing and availability
Not Shown	NOTE	(After 01/01/08)		EA	
Not Shown	003618-026PM	DOOR SKIN - RIGHT HINGE (PM)	1	EA	Not available online / Call for pricing and availability
Not Shown	NOTE	(After 01/01/08)		EA	
Not Shown	003618-025RR	DOOR SKIN - RIGHT HINGE (RR)	1	EA	Not available online / Call for pricing and availability
Not Shown	NOTE	(After 01/01/08)		EA	
Not Shown	003618-021SA	DOOR SKIN - RIGHT HINGE (SA)	1	EA	Not available online / Call for pricing and availability
Not Shown	NOTE	(After 01/01/08)		EA	
Not Shown	003618-022SE	DOOR SKIN - RIGHT HINGE (SE)	1	EA	Not available online / Call for pricing and availability
Not Shown	NOTE	(After 01/01/08)		EA	
Not Shown	003618-017TP	DOOR SKIN - RIGHT HINGE (TP)	1	EA	Not available online / Call for pricing and availability
Not Shown	NOTE	(After 01/01/08)		EA	
Not Shown	003622-000	SKIN,DOOR,AF AR 30 PROI L SS	1	EA	
Not Shown	003628-006WH	DOOR SKIN - LEFT HINGE (WH)	1	EA	Not available online / Call for pricing and availability
Not Shown	003628-007AL	DOOR SKIN - LEFT HINGE (AL)	1	EA	Not available online / Call for pricing and availability
Not Shown	NOTE	(Before 01/01/08)		EA	



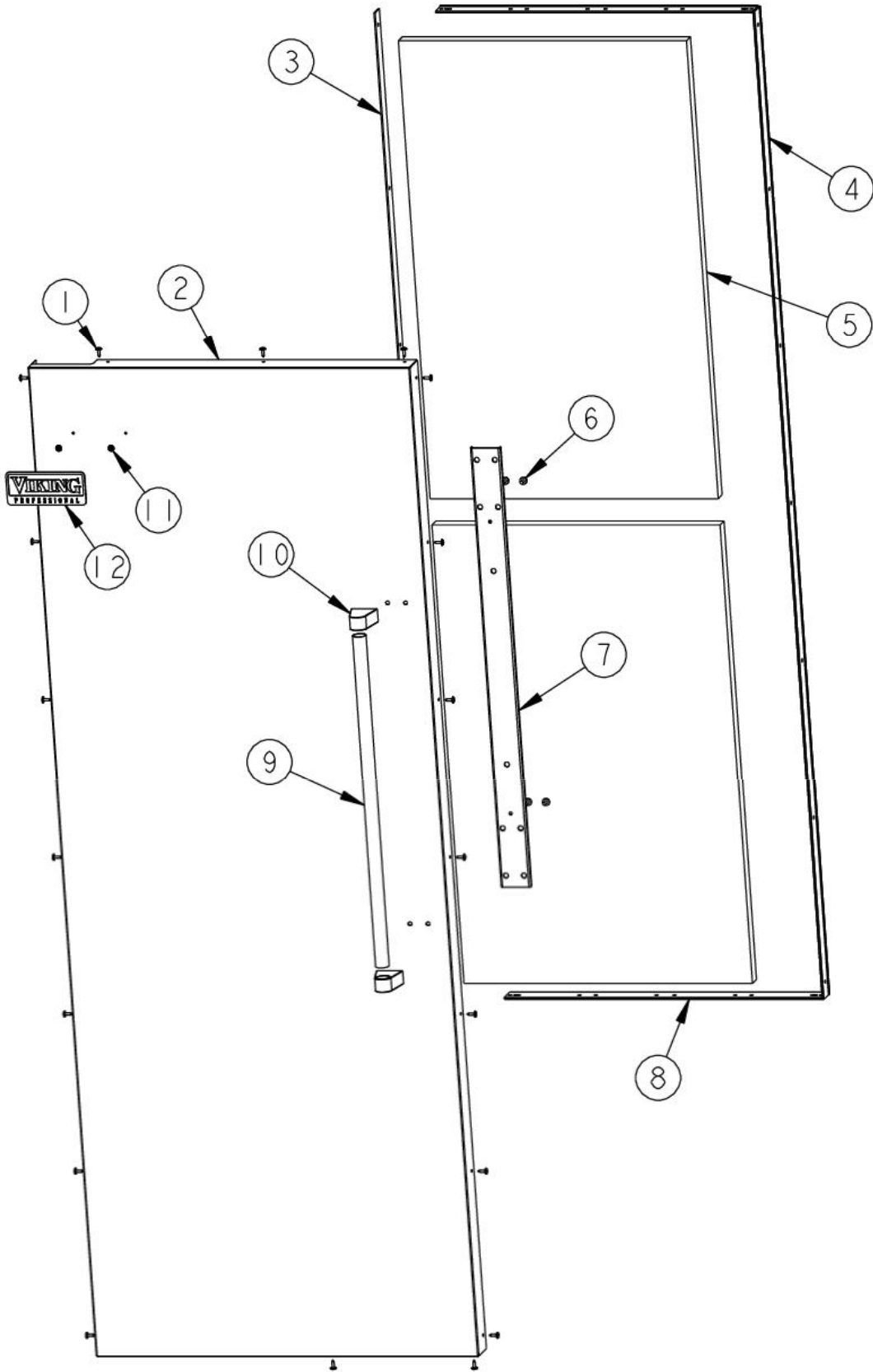
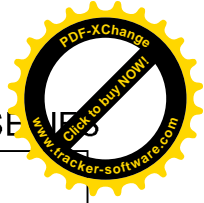
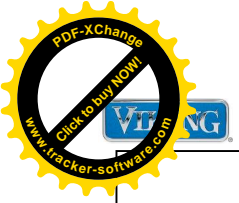


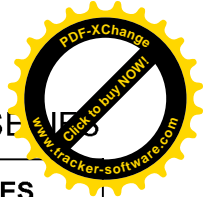
Item	Part No.	Name	Qty	Uom	NOTES
Not Shown	003628-003BT	DOOR SKIN - LEFT HINGE (BT)	1	EA	Not available online / Call for pricing and availability
Not Shown	NOTE	(Before 01/01/08)		EA	
Not Shown	003628-014EP	DOOR SKIN - LEFT HINGE (EP)	1	EA	Not available online / Call for pricing and availability
Not Shown	NOTE	(Before 01/01/08)		EA	
Not Shown	003628-011FG	DOOR SKIN - LEFT HINGE (FG)	1	EA	Not available online / Call for pricing and availability
Not Shown	NOTE	(Before 01/01/08)		EA	
Not Shown	003628-002BK	DOOR SKIN - LEFT HINGE (BK)	1	EA	Not available online / Call for pricing and availability
Not Shown	003628-008BU	DOOR SKIN - LEFT HINGE (BU)	1	EA	Not available online / Call for pricing and availability
Not Shown	003628-013CB	DOOR SKIN - LEFT HINGE (CB)	1	EA	Not available online / Call for pricing and availability
Not Shown	003628-005GG	DOOR SKIN - LEFT HINGE (GG)	1	EA	Not available online / Call for pricing and availability
Not Shown	003628-004SG	DOOR SKIN - LEFT HINGE (SG)	1	EA	Not available online / Call for pricing and availability
Not Shown	003628-012VB	DOOR SKIN - LEFT HINGE (VB)	1	EA	Not available online / Call for pricing and availability
Not Shown	003628-024AR	DOOR SKIN - LEFT HINGE (AR)	1	EA	Not available online / Call for pricing and availability
Not Shown	NOTE	(After 01/01/08)		EA	



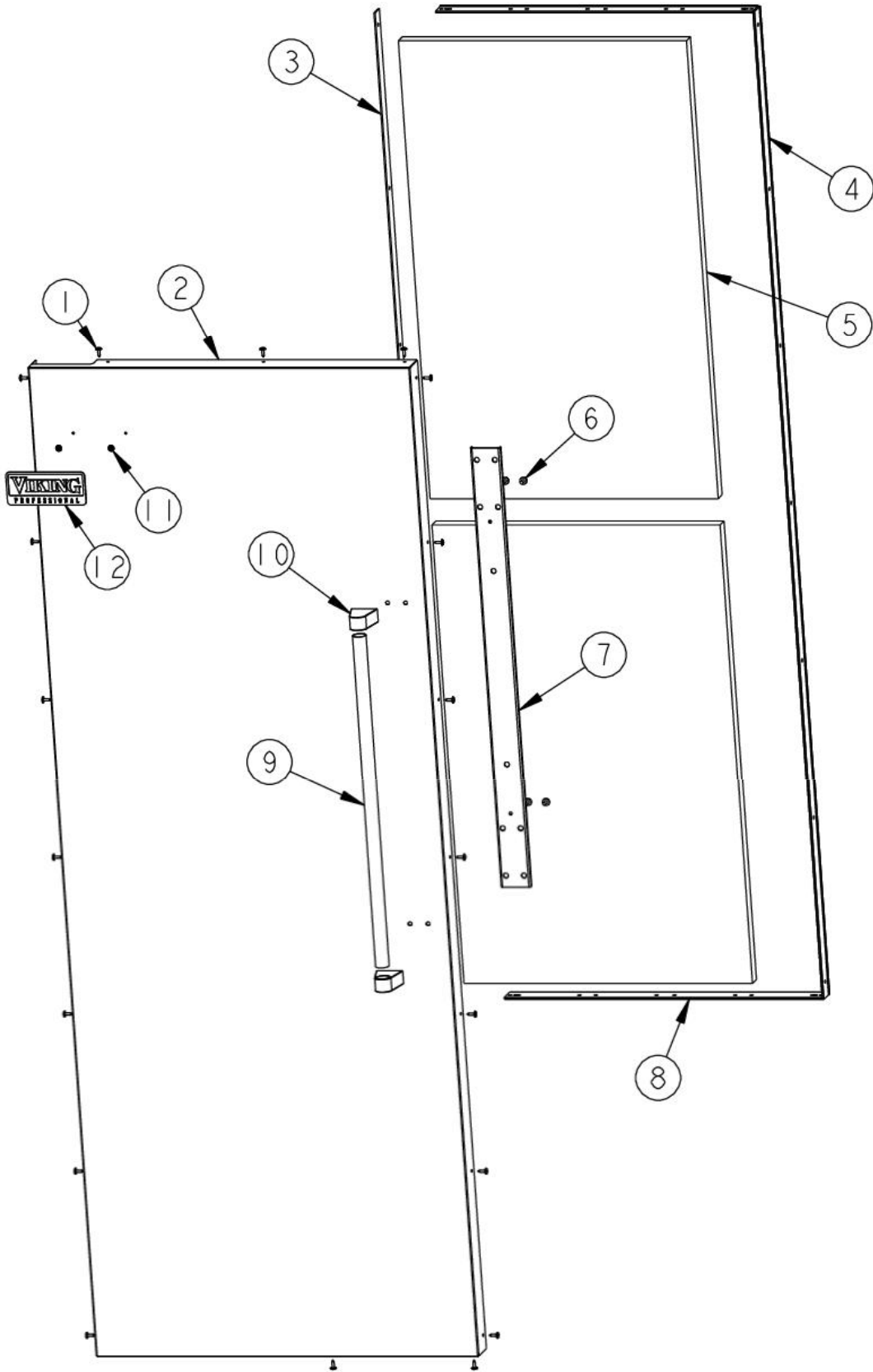
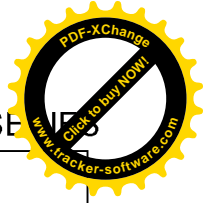
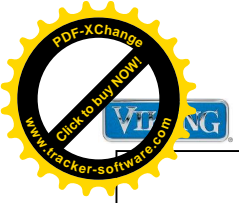


Item	Part No.	Name	Qty	Uom	NOTES
Not Shown	003628-016CH	DOOR SKIN - LEFT HINGE (CH)	1	EA	Not available online / Call for pricing and availability
Not Shown	NOTE	(After 01/01/08)		EA	
Not Shown	003628-018CW	DOOR SKIN - LEFT HINGE (CW) - NLA	1	EA	Not available online / Call for pricing and availability
Not Shown	NOTE	(After 01/01/08)		EA	
Not Shown	003628-020GM	DOOR SKIN - LEFT HINGE (GM)	1	EA	Not available online / Call for pricing and availability
Not Shown	NOTE	(After 01/01/08)		EA	
Not Shown	003628-023IB	DOOR SKIN - LEFT HINGE (IB)	1	EA	Not available online / Call for pricing and availability
Not Shown	NOTE	(After 01/01/08)		EA	
Not Shown	003628-027MS	DOOR SKIN - LEFT HINGE (MS)	1	EA	Not available online / Call for pricing and availability
Not Shown	NOTE	(After 01/01/08)		EA	
Not Shown	003628-019OG	DOOR SKIN - LEFT HINGE (OG)	1	EA	Not available online / Call for pricing and availability
Not Shown	NOTE	(After 01/01/08)		EA	
Not Shown	003628-015PL	DOOR SKIN - LEFT HINGE (PL)	1	EA	Not available online / Call for pricing and availability
Not Shown	NOTE	(After 01/01/08)		EA	
Not Shown	003628-026PM	DOOR SKIN - LEFT HINGE (PM)	1	EA	Not available online / Call for pricing and availability
Not Shown	NOTE	(After 01/01/08)		EA	





Item	Part No.	Name	Qty	Uom	NOTES
Not Shown	003628-025RR	DOOR SKIN - LEFT HINGE (RR)	1	EA	Not available online / Call for pricing and availability
Not Shown	NOTE	(After 01/01/08)		EA	
Not Shown	003628-021SA	DOOR SKIN - LEFT HINGE (SA)	1	EA	Not available online / Call for pricing and availability
Not Shown	NOTE	(After 01/01/08)		EA	
Not Shown	003628-022SE	DOOR SKIN - LEFT HINGE (SE)	1	EA	Not available online / Call for pricing and availability
Not Shown	NOTE	(After 01/01/08)		EA	
Not Shown	003628-017TP	DOOR SKIN - LEFT HINGE (TP)	1	EA	Not available online / Call for pricing and availability
Not Shown	NOTE	(After 01/01/08)		EA	
3	014581-000	SPACER,TRIM,SXS,AF,AR	1	EA	
Not Shown	NOTE	(LH MODELS)		EA	
Not Shown	PE940176	Door Trim - Side	1	EA	
Not Shown	NOTE	(RH MODELS)		EA	
4	PE940176	Door Trim - Side	1	EA	
Not Shown	NOTE	(LH MODELS)		EA	
PD94008 7	014581-000	SPACER,TRIM,SXS,AF,AR	1	EA	
Not Shown	NOTE	(RH MODELS)		EA	
5	PM910068	FOAM, DOOR SKIN (SXS)	1	EA	
6	M0204303	SCREW-MACH	1	EA	
7	K2097526	Bracket, Handle Support (Frz.)	1	EA	
8	056843-000	TRIM, TOP/BTM, 30	1	EA	
9	PE930101	VCSB482 HANDLE -(12466403)	1	EA	



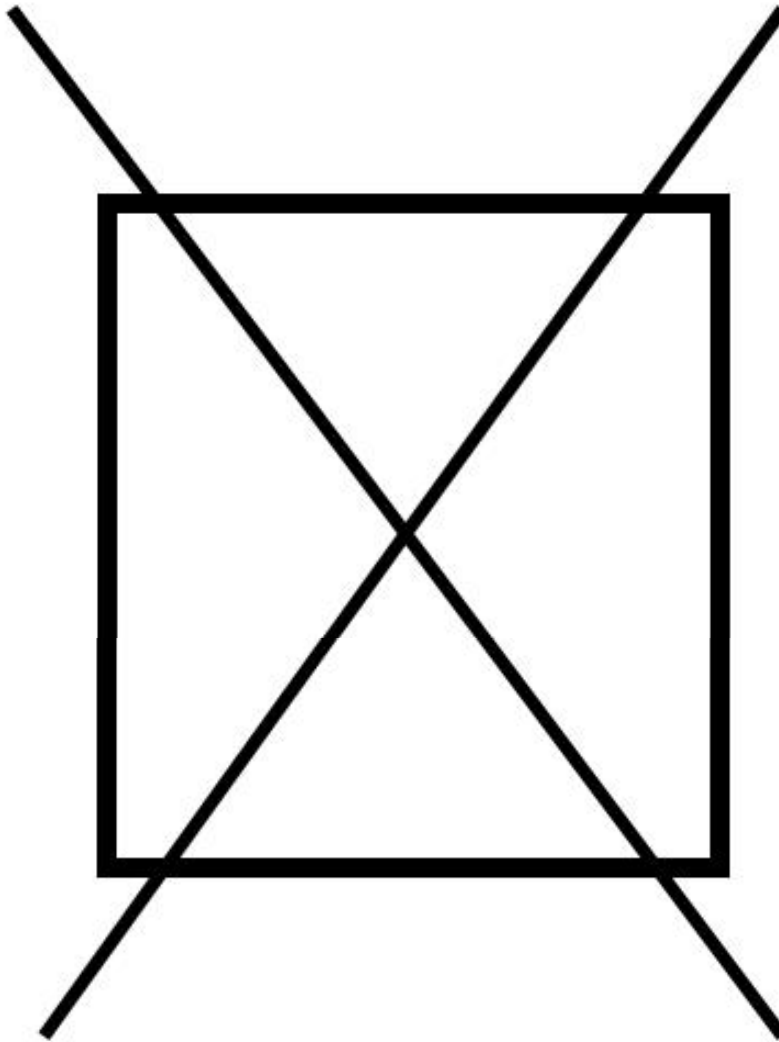


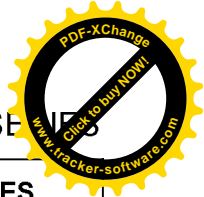
Item	Part No.	Name	Qty	Uom	NOTES
Not Shown	PE030012PVD	DOOR HANDLE - RH - (30"/48") PVD	1	EA	
10	000268-000	HANDLE ENDCAP	1	EA	
Not Shown	PE030001PVD	END CAP DOOR HANDLE *BR	1	EA	
11	PD030006	CAPPED WASHER PAL NUT	1	EA	
12	PE010030	LOGO 6" (VGRC) *BK*	1	EA	
Not Shown	PE010068	LOGO 6" (VGRC) BK/BR	1	EA	
Not Shown	PE010031	LOGO 6" (VGRC) *BK/WH*	1	EA	NO LONGER AVAILABLE
Not Shown	PE010076	LOGO 6" (VGRC) *BR/WH*	1	EA	NO LONGER AVAILABLE
NI	003678-000	DOOR, SKIN, ASM, AF AR30 PROI R (SS)	1	EA	
NI	003657-000	DOOR, SKIN, ASM, AF AR30 PROI R (SS)	1	EA	
NI	003617-000	SKIN,DOOR, AF AR 30 PROI R SS	1	EA	



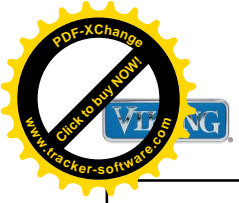
APORATOR AREA

NON
ILLUSTRATED PART

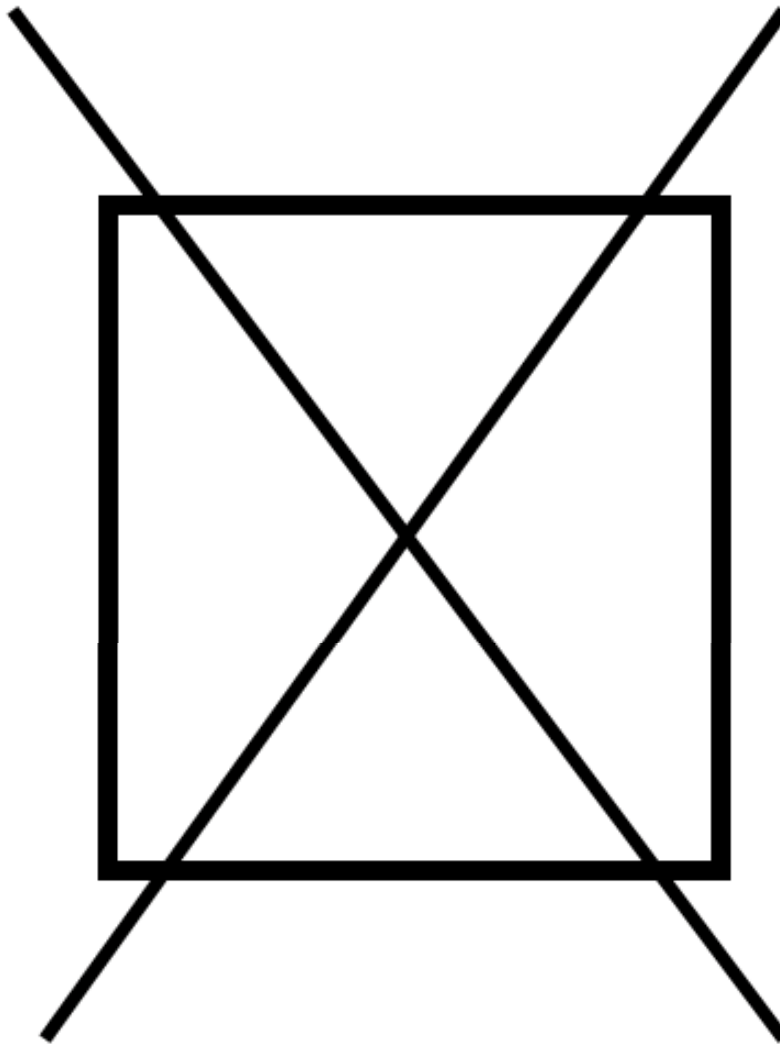


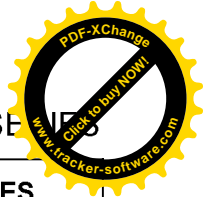


Item	Part No.	Name	Qty	Uom	NOTES
1	F20913719	TUBE EVAP AR 30		EA	
2	PD020238	SCR WH HEX WSHR HD SLTD #8-18 X 1/2		EA	
3	G50914134	ASM FAN MOUNTING AR 30		EA	
4	F20911126	TUBE SUCTION AR 30		EA	
5	PB070288	1/4" X 1/2" CLOSED CELL SPONGE		EA	
6	PM910457	EVAPORATOR AR 30		EA	
7	K20914102	K20914102		EA	
8	PD040150	WASHER FLAT NYLON #10		EA	
9	PB070288	1/4" X 1/2" CLOSED CELL SPONGE		EA	
10	G50914188	DRAIN PAN ASM UPPER AR30		EA	
11	PK030446	DRAIN VERTICAL AR 30 36		EA	
12	M0104106	CLIP-CORD VM0104106		EA	
13	L20913709WH	DIVIDER AIR AR 30		EA	
14	049987-000	MS HEAT EXCH ASM AR 36 30		EA	



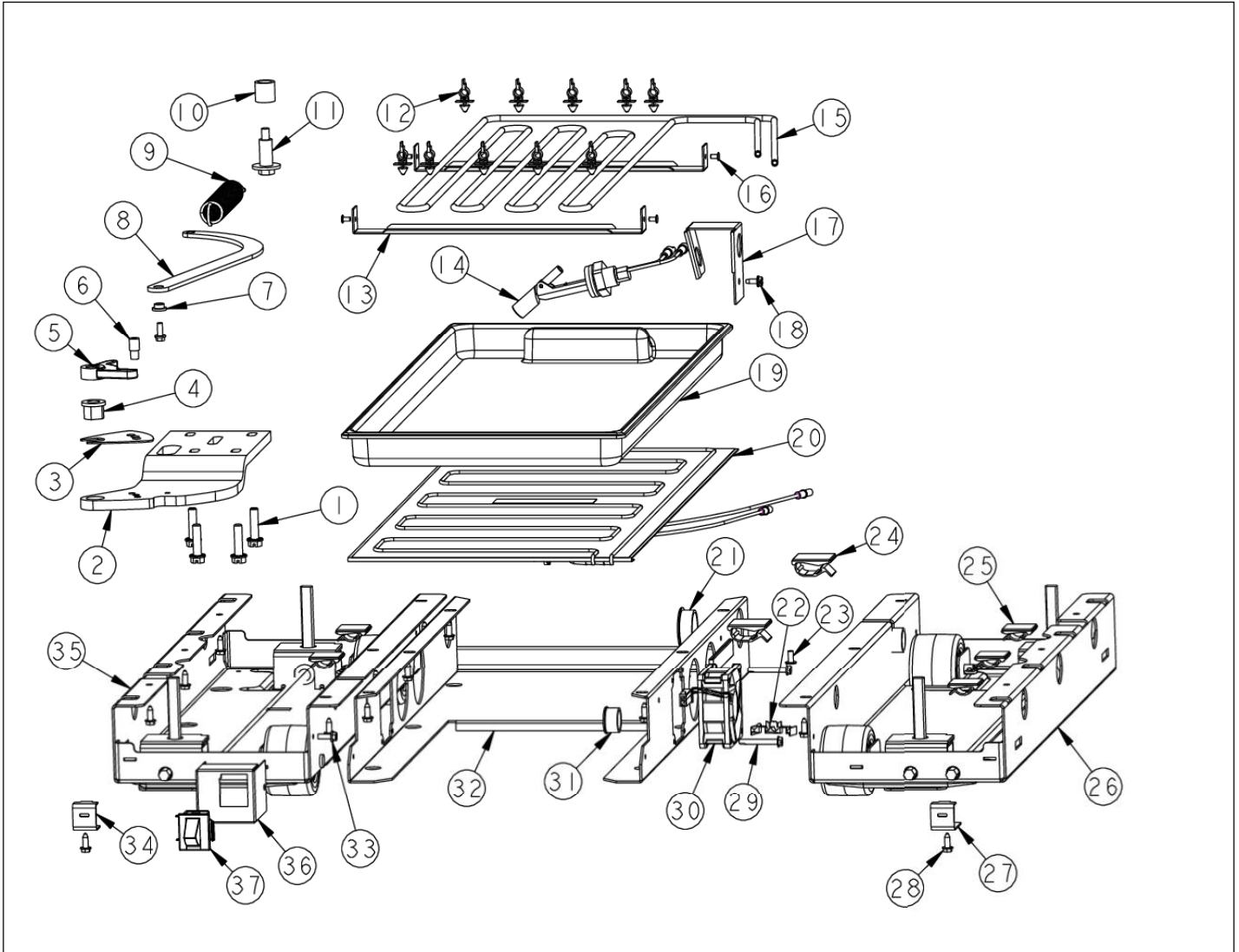
NON ILLUSTRATED PART

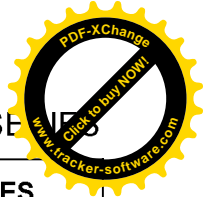




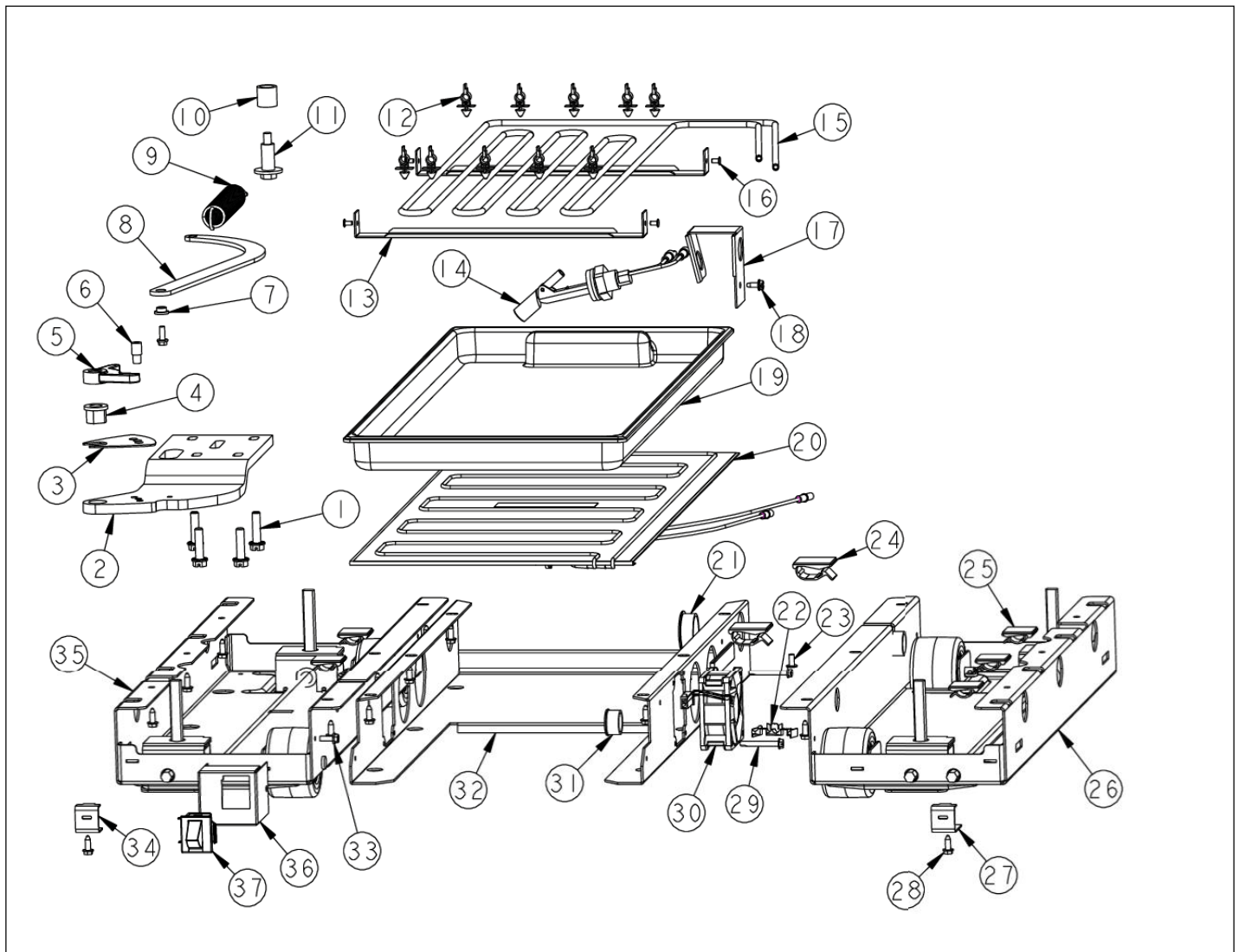
Item	Part No.	Name	Qty	Uom	NOTES
<p>Comments for Part Num. 049987-000</p> <p>bradleysapplianceservice@shaw.ca on Sep 22, 2017 SUBS TO: 049987-000 HEAT EXCHANGER AR 30" / 36" crystal@knservice.com on Sep 22, 2017 This new aluminum h/e melts where it meets the copper tip when welding during a repair. Any recommendations to prevent this? Reply by corcoran1@cox.net on Dec 21, 2017 Try heat sink and wrap it in wet towel, use oxy-acetylene torch as opposed to map gas Reply by bradleysapplianceservice@shaw.ca on Jun 5, 2018 Yes, we have used heat paste but wet rags torn into thin strips works just as good and readily available. Reply by tim@tnrappliance.com on Dec 20, 2018 this new aluminum is crap can barely heat it and the copper tip comes off. i now get to redo the job when i get another heat exchanger. has anyone used an epoxy to set the tubes. bradleysapplianceservice@shaw.ca on Jun 5, 2018 Use caution when brazing, must use heat sink to avoid melting the aluminum. Use heat paste or wet rags. Also be sure check ports before installing. We have had a plugged port from factory when they installed the copper ends they closed off the port internally. Can't be seen easily so use nitrogen to blow through ports to be sure they are not plugged. It would have been nice to see at least 3 more inches of copper on the ends. It's easier to cut the above tubing to size than deal with these stubby copper ports. info@oceanicrepair.com on Oct 1, 2019 I have been using Lokring and its been perfect. If I do not have the fitting, going over board with heat trap paste and a wet rag also works.</p>					
15	PD020194	SCR, HEX SRTD WSHR HD, #8-18 X 1/2		EA	
16	K20912393	PLATE BAFFLE VERTICAL AR 30		EA	Not available online / Call for pricing and availability
17	PD020032	SRW-8(A)X3/8"PH.WFR HD 7/16DIA*NICL		EA	
18	PK030445	PAN DRAIN LOWER EVAP AR 30 36		EA	
19	K20912394	PLATE BAFFLE VERTICAL SMALL AR 30		EA	
20	A3030361	GASKET RED		EA	
21	12115101	CLAMP-TUBE V12115101		EA	
22	PB920246	CAPILLARY TUBE		EA	

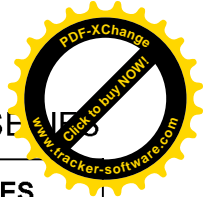
POWER UNIT AREA





Item	Part No.	Name	Qty	Uom	NOTES
1	000570-000	FASTENER, BOLT, 1/4-20 IHXWS 1" S ZN SER	1	EA	
2	PC020289	HINGE PLATE LL	1	EA	
PC92021 5	PC020288	HINGE PLATE LR	1	EA	
3	PC920144	PLATE - WC DOOR SHIM	1	EA	
4	PD940090	BUSHING - WC DOOR LEVEL	1	EA	
5	PD940091	BUSHING - DOOR STOP	1	EA	
6	PC920145	PIN - DOOR STOP	1	EA	
7	PD940094	BUSHING	1	EA	
8	PC920149	BAR-WC BOT HINGE LH	1	EA	
Not Shown	PC920166	BAR-WC BOT HINGE RH	1	EA	
9	PC910015	SPRING EXTENSION	1	EA	
10	PD940107	ROUND SPRING SPACER	1	EA	
11	M0221523	SCREW - SHLDR	1	EA	
12	PD030146	STAND OFF LOCK CLIP	1	EA	
13	K20911832	BRACKET CONDENSATE SUPPORT	1	EA	
14	PE050248	FLOAT SWITCH HORIZONTAL	1	EA	
15	F2099927	SERPENTINE AF AR 30	1	EA	
16	PC040010	POP RIVET (.063/GR -.125) GAMD42-A	1	EA	
17	B20915627	BRACKET HORIZ FLOAT SWITCH	1	EA	
18	M0253916	SCR 8-32 SHXW 3/8 TRI-LOBE	1	EA	
19	PK930347	PAN-DRAIN AF AR 30	1	EA	
20	G50915603	PAN HEATER ASM AF/AR 30	1	EA	
21	A4554817	BUSHING-SNAP VA4554817	1	EA	
22	M0327801	TAP-ELECTRO	1	EA	
23	PD020010	10 X 3/8 GREEN GROUNDING SCREW	1	EA	
24	M0104102	CLIP-CORD RED	1	EA	
25	M0104106	CLIP-CORD VM0104106	1	EA	
26	060890-000	LEVELER MODULE R	1	EA	
27	K2098044	BRKT GRILLE SUPPORT	1	EA	





Item	Part No.	Name	Qty	Uom	NOTES
28	PD020194	SCR, HEX SRTD WSHR HD, #8-18 X 1/2	1	EA	
29	PD020274	SCR SLTD HEX WSHR HD 8X1.250 BT	1	EA	
30	004551-000	AXIAL FAN	1	EA	

Comments for Part Num. 004551-000

gboltz@VikingRange.com on Jul 21, 2016

View service bulletin TR-0052-SP before ordering fan, if applicable order kit instead of fan

31	A4554806	BUSHING-SNAP VA4554806	1	EA	
32	K20915953	SHIELD BOTTOM DRAIN	1	EA	
33	M0220417	SCREW-TC	1	EA	
34	K2098096	BRKT GRILLE SUPPORT	1	EA	
35	060891-000	LEVELER MODULE L	1	EA	
36	002668-000	SWITCH,GRILLE,MT,LH	1	EA	
Not Shown	002667-000	SWITCH,GRILLE,MT,RH	1	EA	
37	PE950147	SWITCH SPST NC BLACK	1	EA	

Comments for Part Num. PE950147

bradleysapplianceservice@shaw.ca on May 1, 2017

CAUTION WHEN ORDERING DOOR SWITCH. PARTS LISTINGS COULD BE INCORRECT.

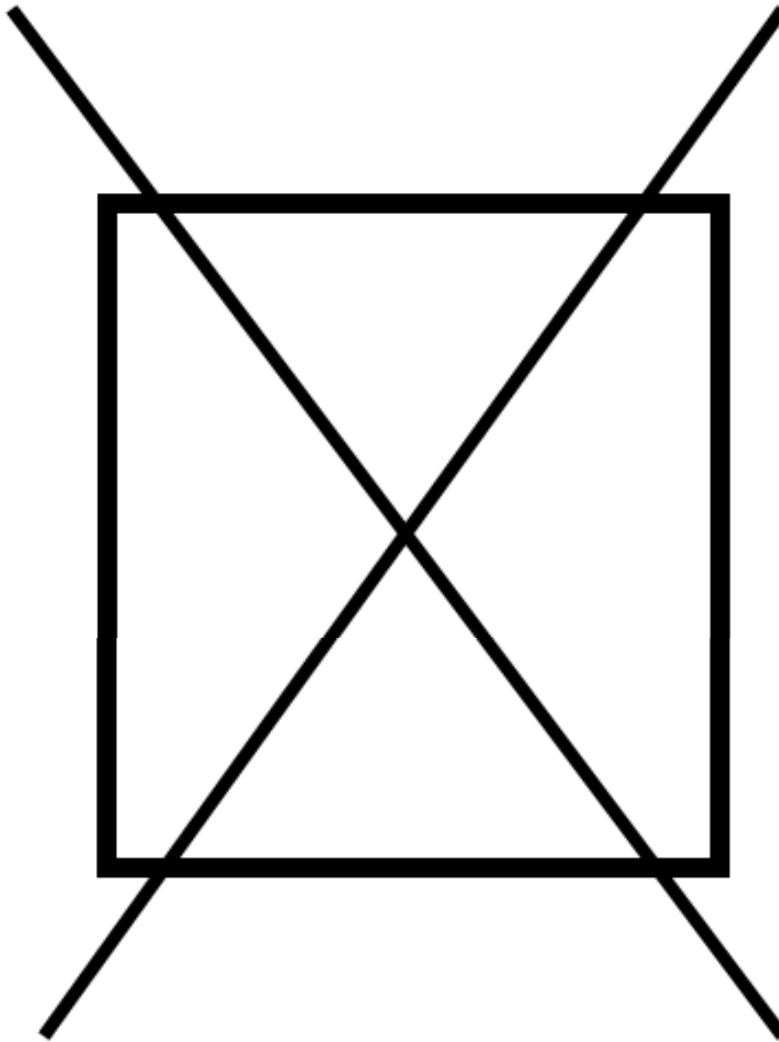
THERE IS TWO VERSIONS OF THIS DOOR SWITCH THAT NEEDS TO BE VISUALLY CHECKED ON UNIT TO DETERMINE CORRECT PART.

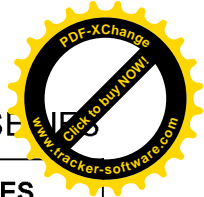
PE950146 DOOR SWITCH 3 WIRE SPDT BLACK

PE950147 DOOR SWITCH 2 WIRE SPST BLACK

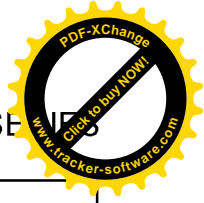
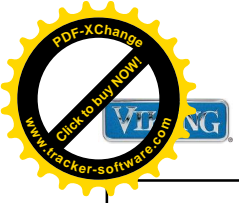


NON
ILLUSTRATED PART

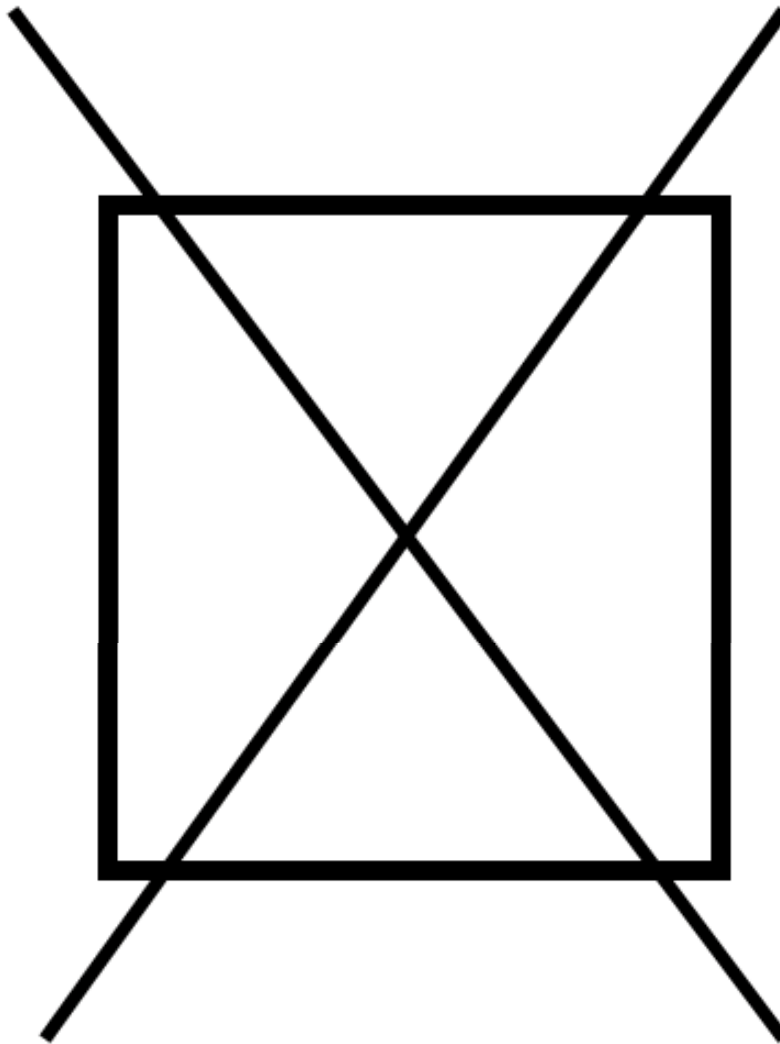




Item	Part No.	Name	Qty	Uom	NOTES
1	K2099460	MC SIDE L	1	EA	
2	PB070356	INSULATION MC COVER	1	EA	
3	K2099932	MC BACK 30	1	EA	
4	PB070355	INSULATION MC COVER	1	EA	
5	K2099930	MC TOP 30	1	EA	
6	PC040010	POP RIVET (.063/GR -.125) GAMD42-A	1	EA	
7	K20915675	BRACKET PSM	1	EA	
8	M0223509	SCREW-LAG	1	EA	
9	PK910089	BRACKET, ANTI - TIP	1	EA	
10	K2099459	MC SIDE (RIGHT)	1	EA	
11	A4554806	BUSHING-SNAP VA4554806	1	EA	
12	PB970171	MC INSULATION - BACK SIDE	1	EA	Not available online / Call for pricing and availability
13	A3189370	GASKET-FOAM VA3189370	1	EA	
14	10916507	CORD-POWER 5 SERIES	1	EA	
15	PD040157	BEARING SLEEVE	1	EA	
16	PD020233	SCR LAG 5/16-9 GX 5/16X7/16 WAF IHXW 3 S ZN	1	EA	
17	PK050004	BRACKET GRILLE	1	EA	
18	PD020194	SCR, HEX SRTD WSHR HD, #8- 18 X 1/2	1	EA	
19	M0220417	SCREW-TC	1	EA	
20	K20916342	BRACKET GRILLE	1	EA	
21	PB070357	INSULATION MC COVER	1	EA	
22	B2096961	BRACKET-LOUVER	1	EA	
23	002838-000	LOUVER,GRL,TOP,30 PROI	1	EA	
24	B20916338	ENDCAP GRILLE PROI L	1	EA	
Not Shown	B20916336	ENDCAP GRILLE PROI N	1	EA	
25	002839-000	LOUVER,GRL,MDL,30 PROI	1	EA	Not available online / Call for pricing and availability



NON ILLUSTRATED PART

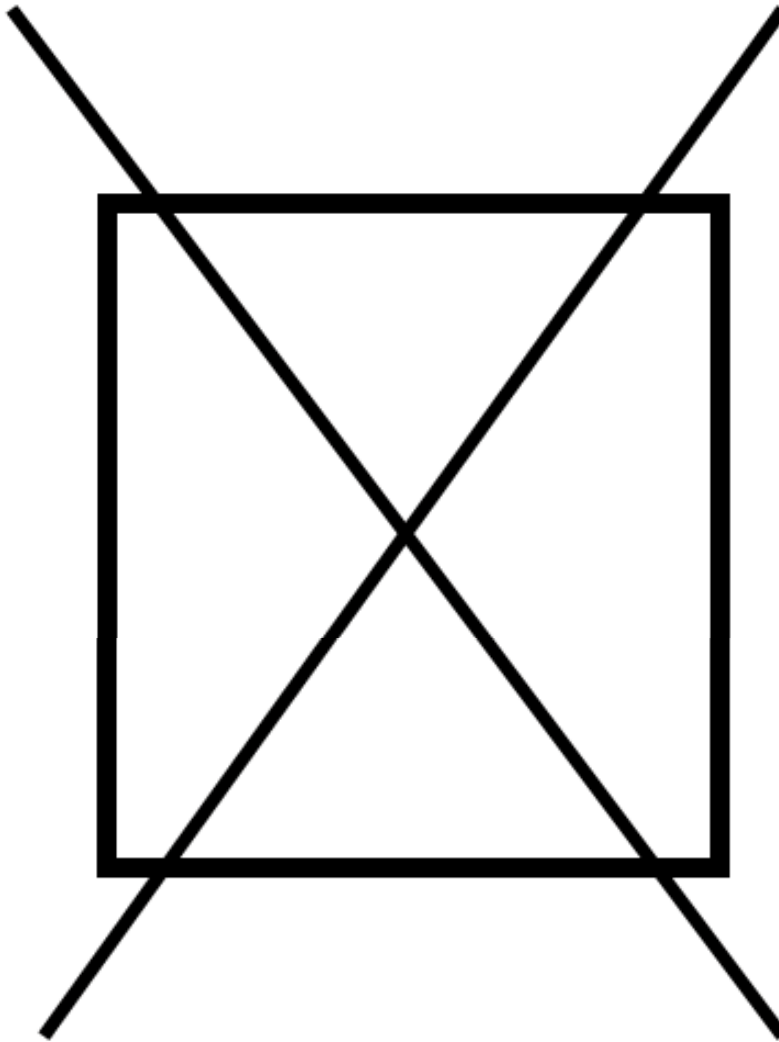


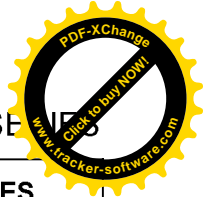


Item	Part No.	Name	Qty	Uom	NOTES
26	002840-000	LOUVER,GRL,LWR,30 PROI	1	EA	Not available online / Call for pricing and availability
27	B20911818	GRILL ENDCAP PRO L/R NON-HINGE	1	EA	
Not Shown	B20911817	GRILLE ENDCAP PRO R	1	EA	
28	K2099455	SUPPORT MC Z	1	EA	

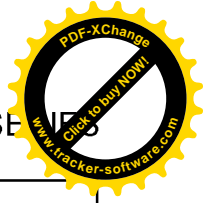
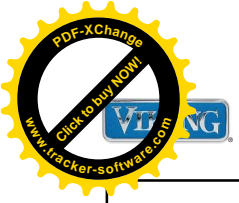


NON ILLUSTRATED PART

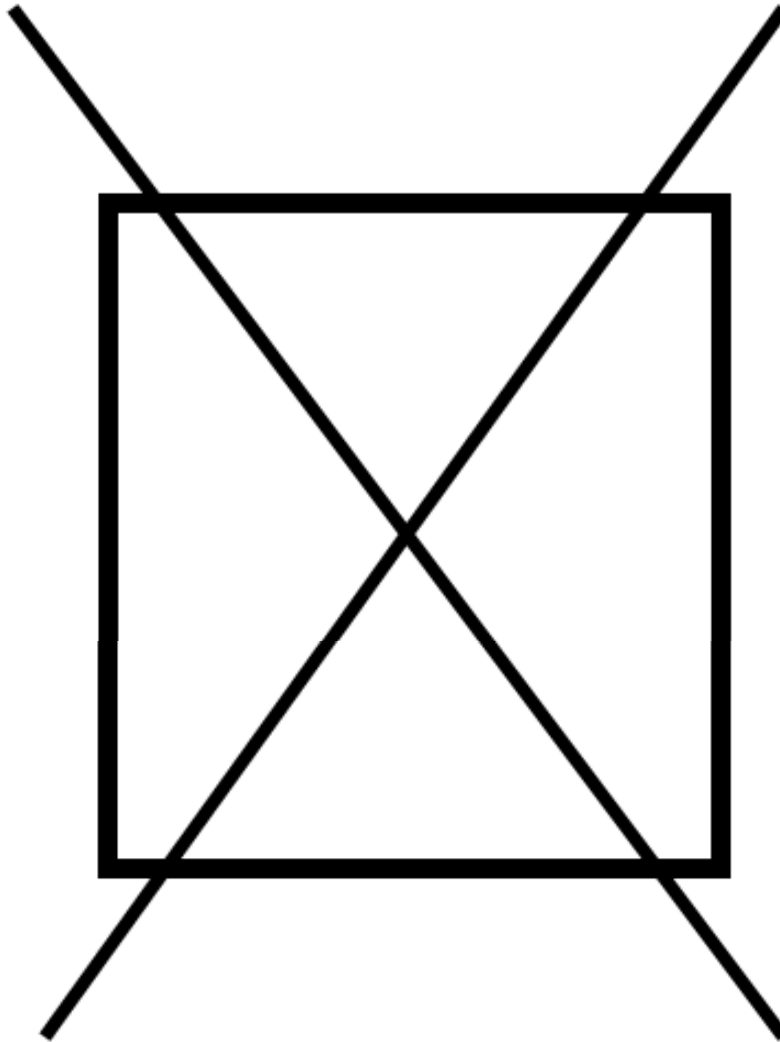




Item	Part No.	Name	Qty	Uom	NOTES
1	PK930307	DUCT MEAT SAVOR AR 30 SXS 48	1	EA	
2	004551-000	AXIAL FAN	1	EA	
<p>Comments for Part Num. 004551-000</p> <p>gboltz@VikingRange.com on Jul 21, 2016</p> <p>View service bulletin TR-0052-SP before ordering fan, if applicable order kit instead of fan</p>					
NI	020822-000	FAN RESISTOR KIT	1	EA	
Not Shown	NOTE	(BEFORE SERIAL# 110409R00010197)		EA	
3	PD020195	SCR 8-18 X 5/8	1	EA	
4	045692-000	DOOR MEATSAVOR ASM AR 30 SXS 48	1	EA	
5	PK930175	SUPPORT DRAWER MEAT SAVOR SXS 42/48 R	1	EA	
6	PK930283	DUCT MEATSAVOR SPACER	1	EA	
7	PK930172	COVER CONTROL MEAT SAVOR	1	EA	
8	PM910334	ROLLER TENSION	1	EA	
9	044384-000	DIAL CONTROL MEAT SAVOR	1	EA	
10	M0224128	SCREW-SM	1	EA	
11	044232-000	DUCT MEAT SAVOR SXS 42/48 R	1	EA	
12	PK930173	SUPPORT SLIDE MEAT SAVOR SXS 42/48 R	1	EA	
13	PM910287	SLIDE MEAT SAVOR R	1	EA	
14	PK930309	DRAWER MEAT SAVOR AR 30 SXS 48	1	EA	
15	PD920162	SCR 8-16 PLASTITE PNP 1/4 S	1	EA	
16	PM910288	SLIDE MEAT SAVOR L	1	EA	
<p>Comments for Part Num. PM910288</p> <p>profixappliances@gmail.com on May 3, 2017</p> <p>ITEM # 5 SHOULD BE PK930288-DOOR MEATSAVOR ASM AR/BM 36</p>					
17	PK930174	SUPPORT SLIDE MEAT SAVOR SXS 42/48 L	1	EA	
18	PK930176	SUPPORT DRAWER MEAT SAVOR 42/48 L	1	EA	



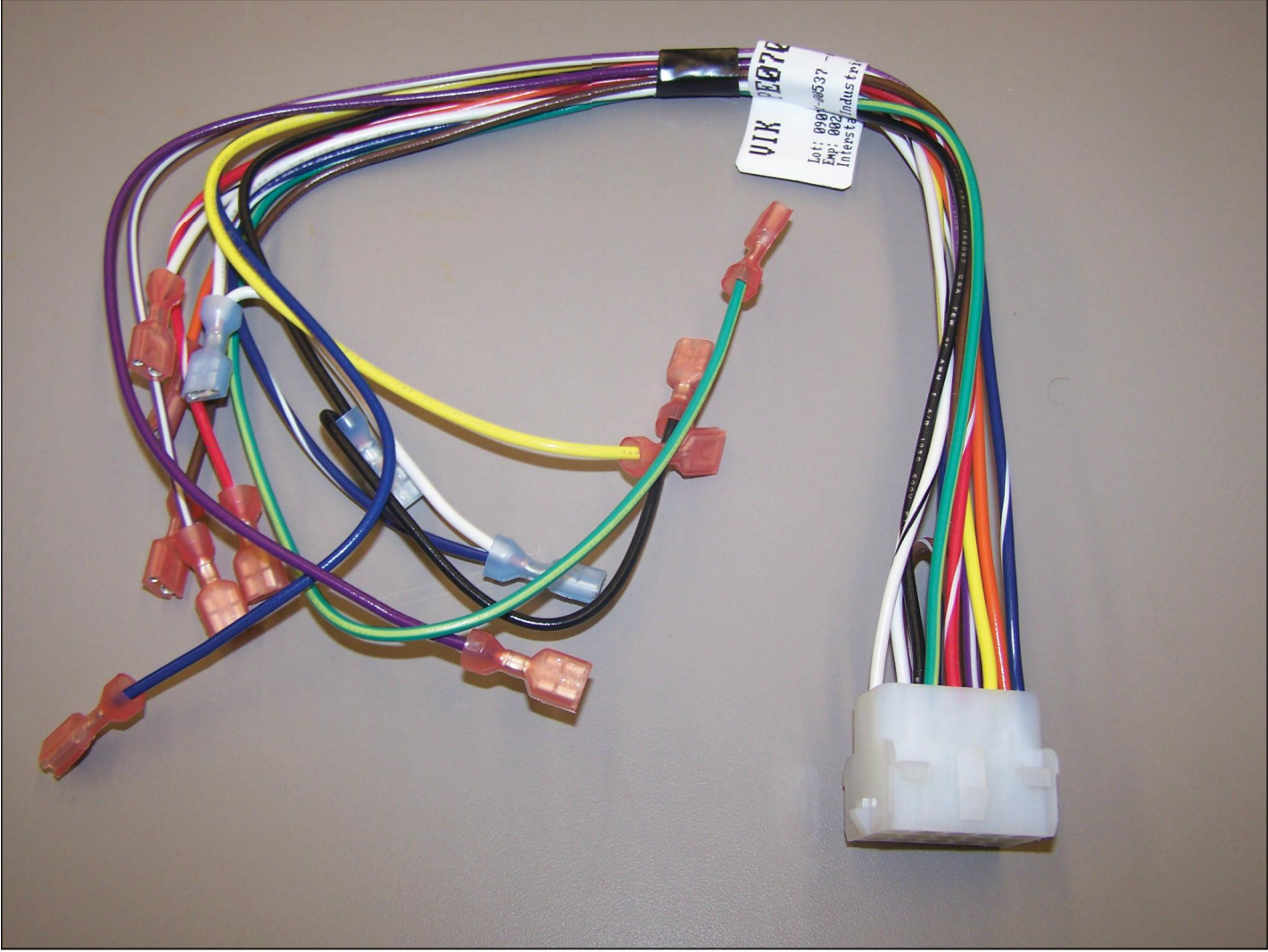
NON ILLUSTRATED PART





Item	Part No.	Name	Qty	Uom	NOTES
19	M0211021	SCREW-SM	1	EA	
20	PK930284	DUCT MEATSAVOR LEFT	1	EA	
21	PK930308	SHELF MEAT SAVOR AR 30 SXS 48	1	EA	

070785 HIGH VOLT HARNESS





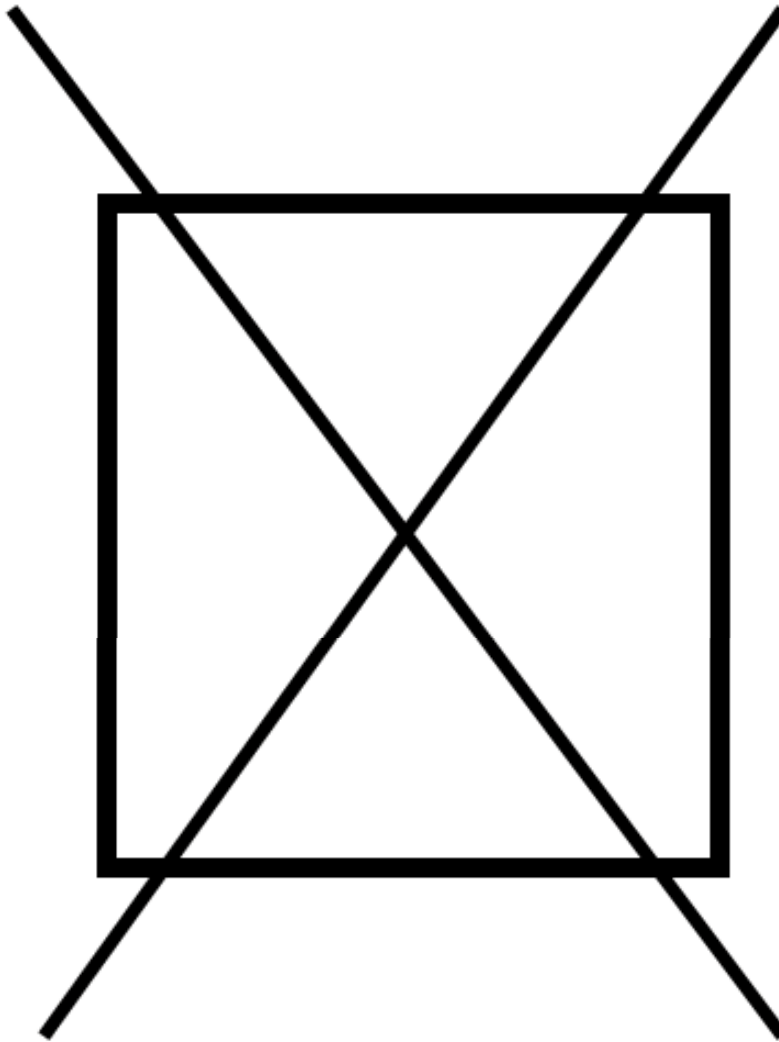
VIRB304JMAG-RSE



Item	Part No.	Name	Qty	Uom	NOTES
1	PE070785	Harness, High Voltage Board	1	EA	



NON ILLUSTRATED PART

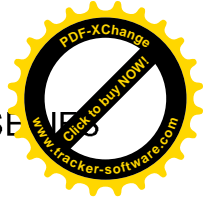




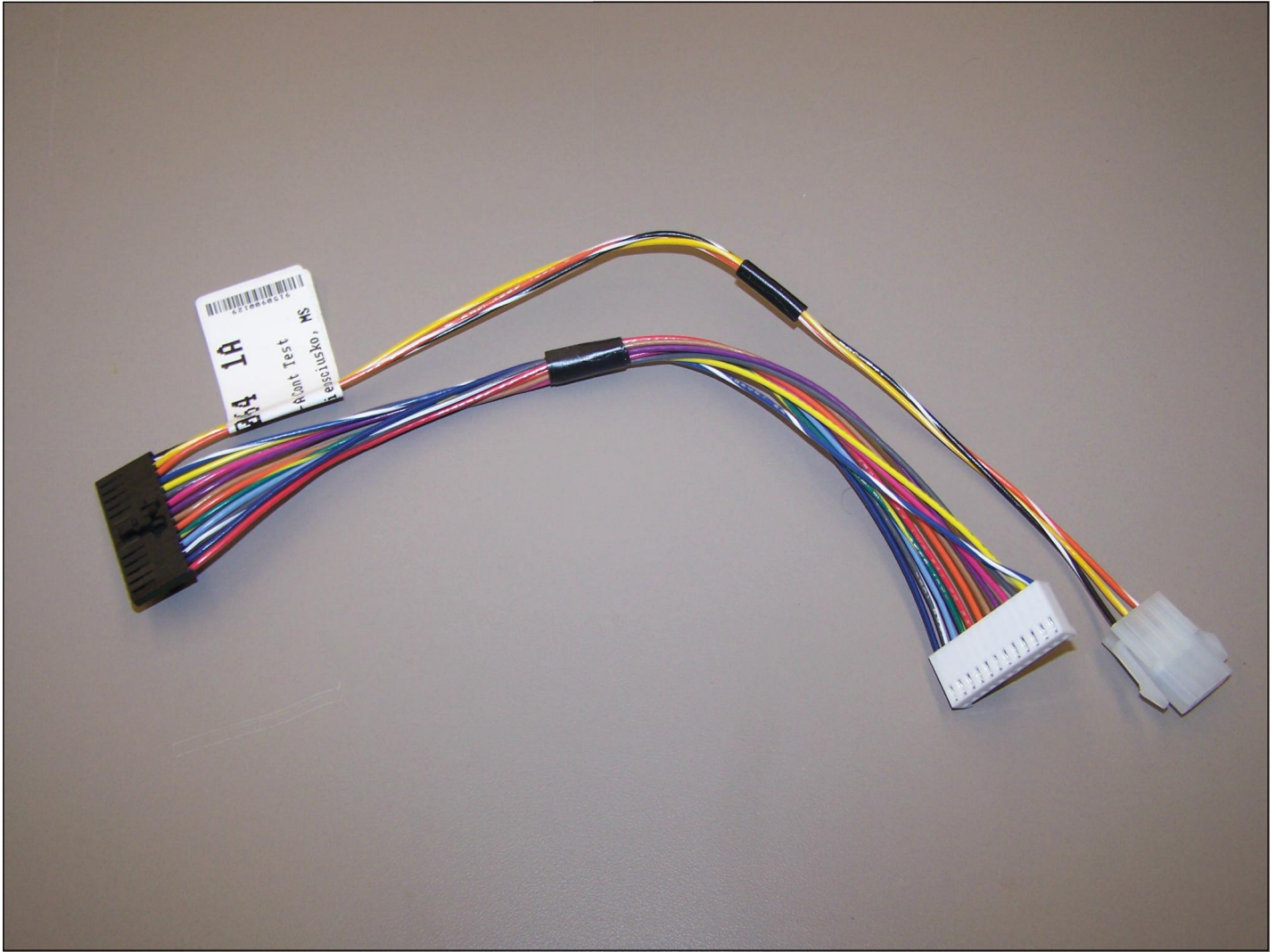
VIRB304JMAG-RSE



Item	Part No.	Name	Qty	Uom	NOTES
1	PE070877	HARNESS MACHINE COMP AR	1	EA	



970464 LOW VOLT HARNESS



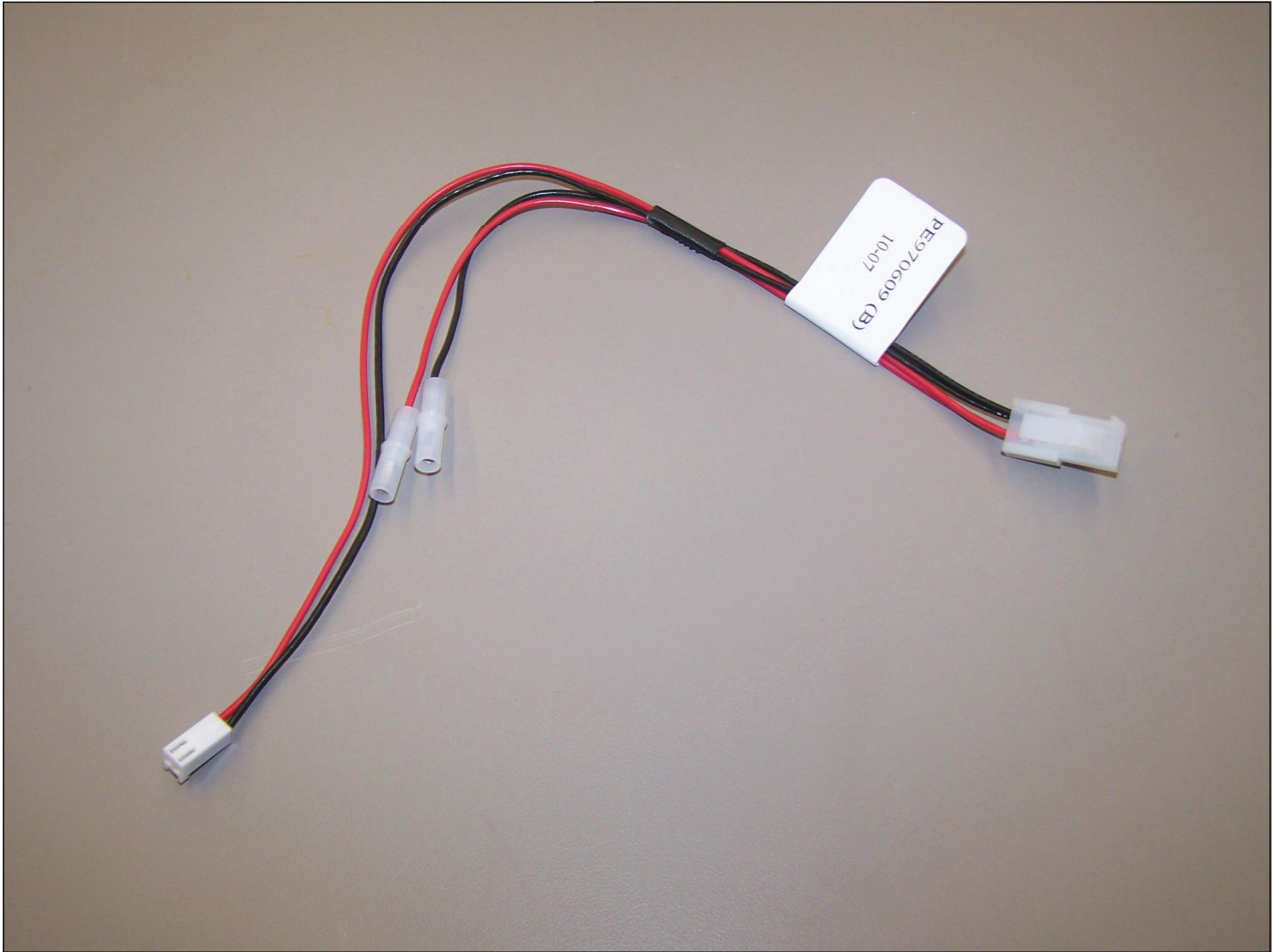


VIRB304JMAG-RSE



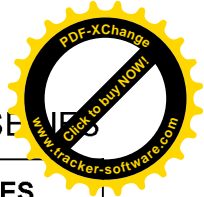
Item	Part No.	Name	Qty	Uom	NOTES
1	PE970464	HARNESS LOW VOLT 5 SERIES	1	EA	

970609 CONTROL BOARD HARNESS





VIRB304JMAG-RSE

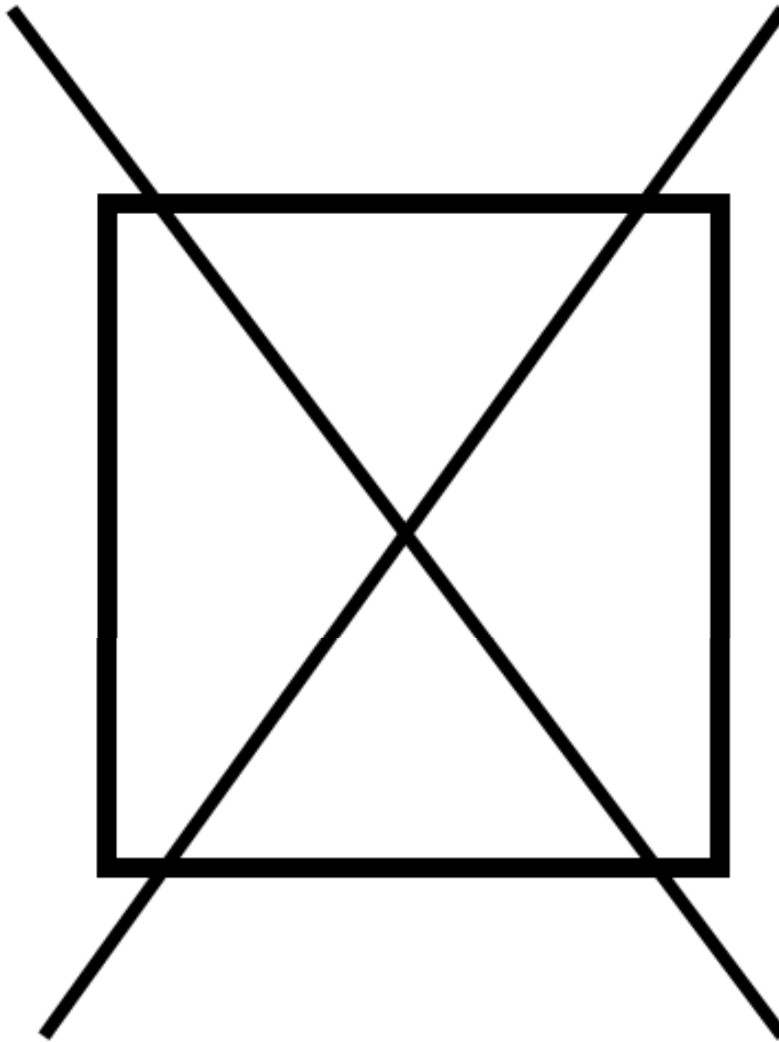


Item	Part No.	Name	Qty	Uom	NOTES
1	PE970609	HARNESS CONTROL BOARD 5 SERIES	1	EA	



970641 FAN RESISTOR JUMPER

NON
ILLUSTRATED PART

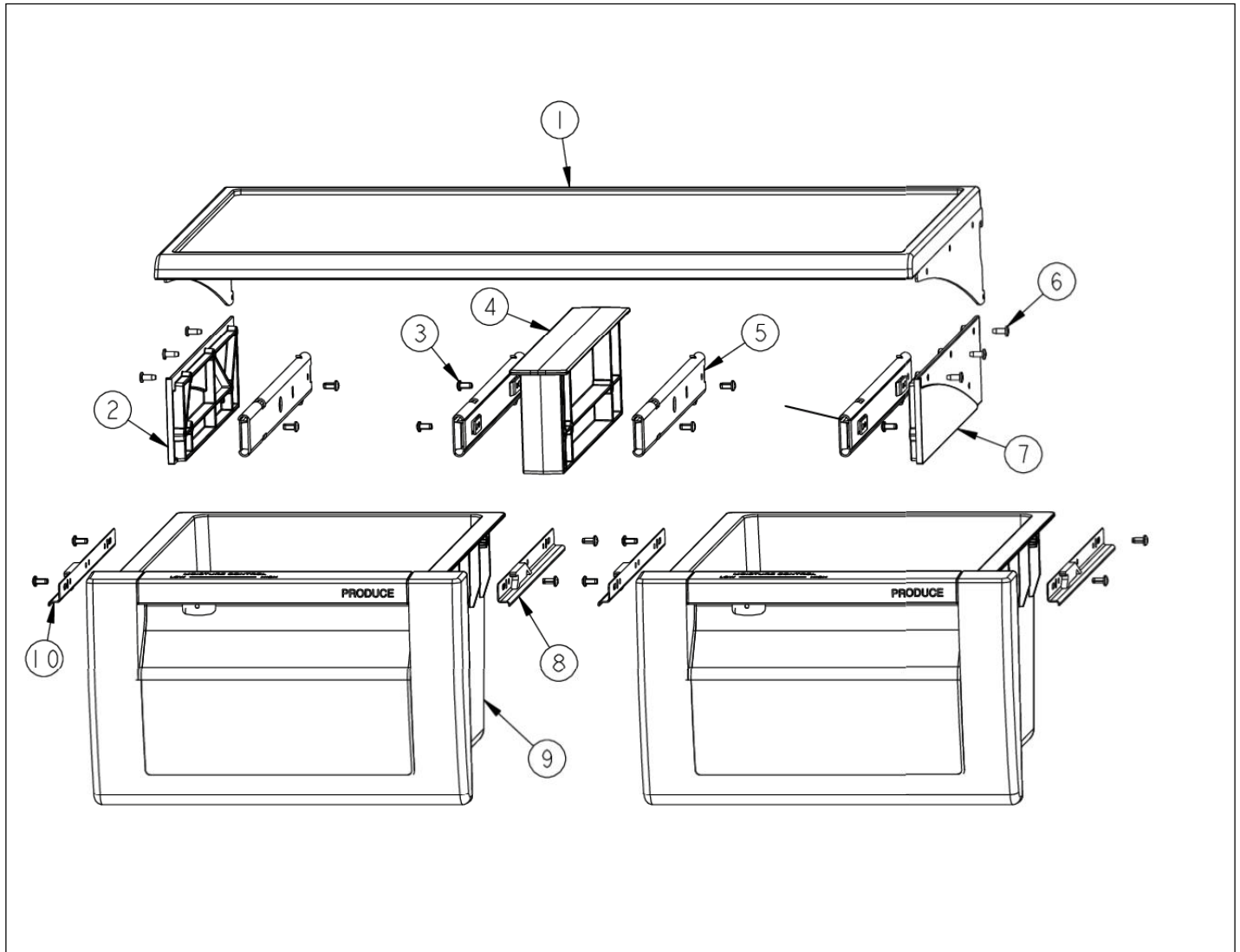


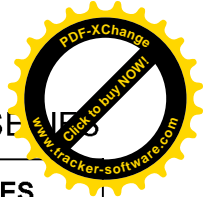


VIRB304JMAG-RSE



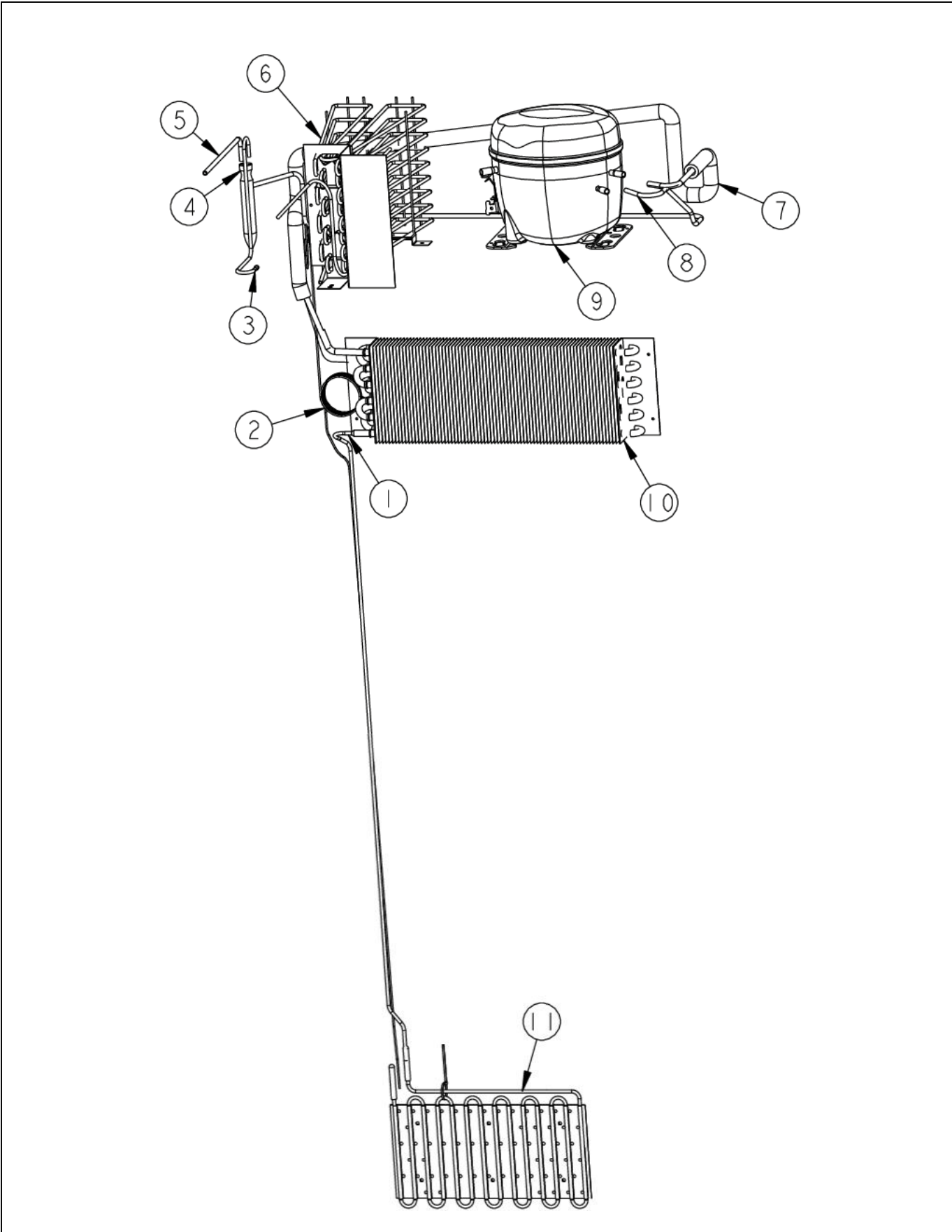
Item	Part No.	Name	Qty	Uom	NOTES
1	PE970641	JUMPER FAN RESISTOR	1	EA	

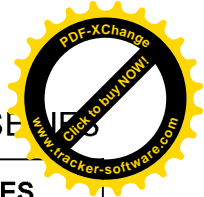




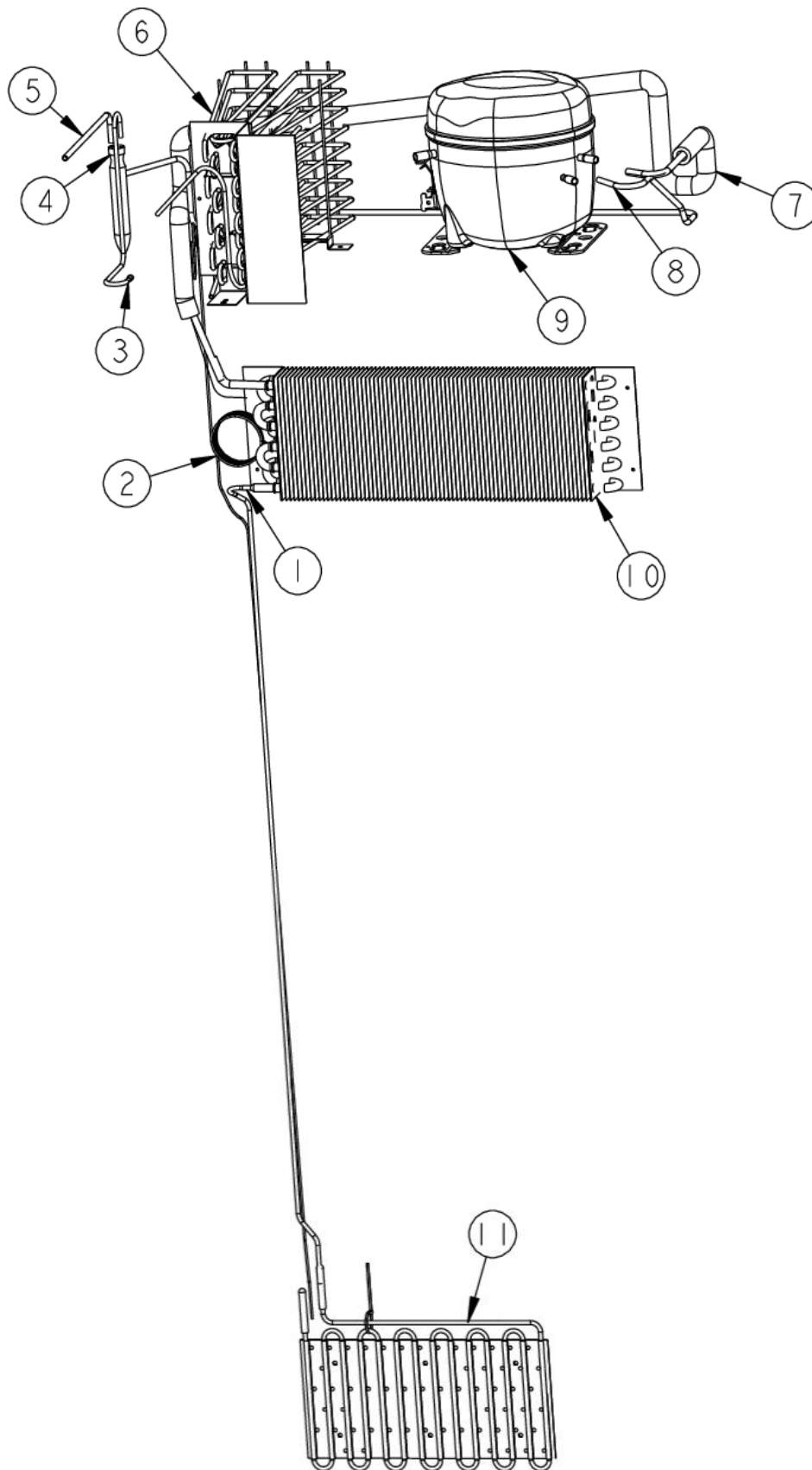
Item	Part No.	Name	Qty	Uom	NOTES
1	043624-000	SHELF ASM GLASS 30 AR 48 FF	1	EA	
2	044219-000	SUPPORT SLIDE L	1	EA	
3	PD920161	SCR 8-16 PLASTITE PNP 3/8 S	1	EA	
4	PK030439	GLIDE CENTER SUPPORT	1	EA	
5	046255-000	SLIDE, DWR SOFT CLOSE LH	2	EA	
6	PD020032	SRW-8(A)X3/8"PH.WFR HD 7/16DIA*NICL	1	EA	
7	044214-000	SUPPORT SLIDE R	1	EA	
8	PM910343	RAIL DRAWER R	1	EA	
9	009925-000	PRODUCE AR 30 SXS 48	2	EA	
10	PM910342	RAIL DRAWER L	1	EA	
11	046235-000	SLIDE, DWR SOFT CLOSE RH	2	EA	

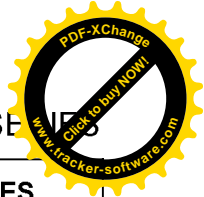
REFRIGERANT SYSTEM





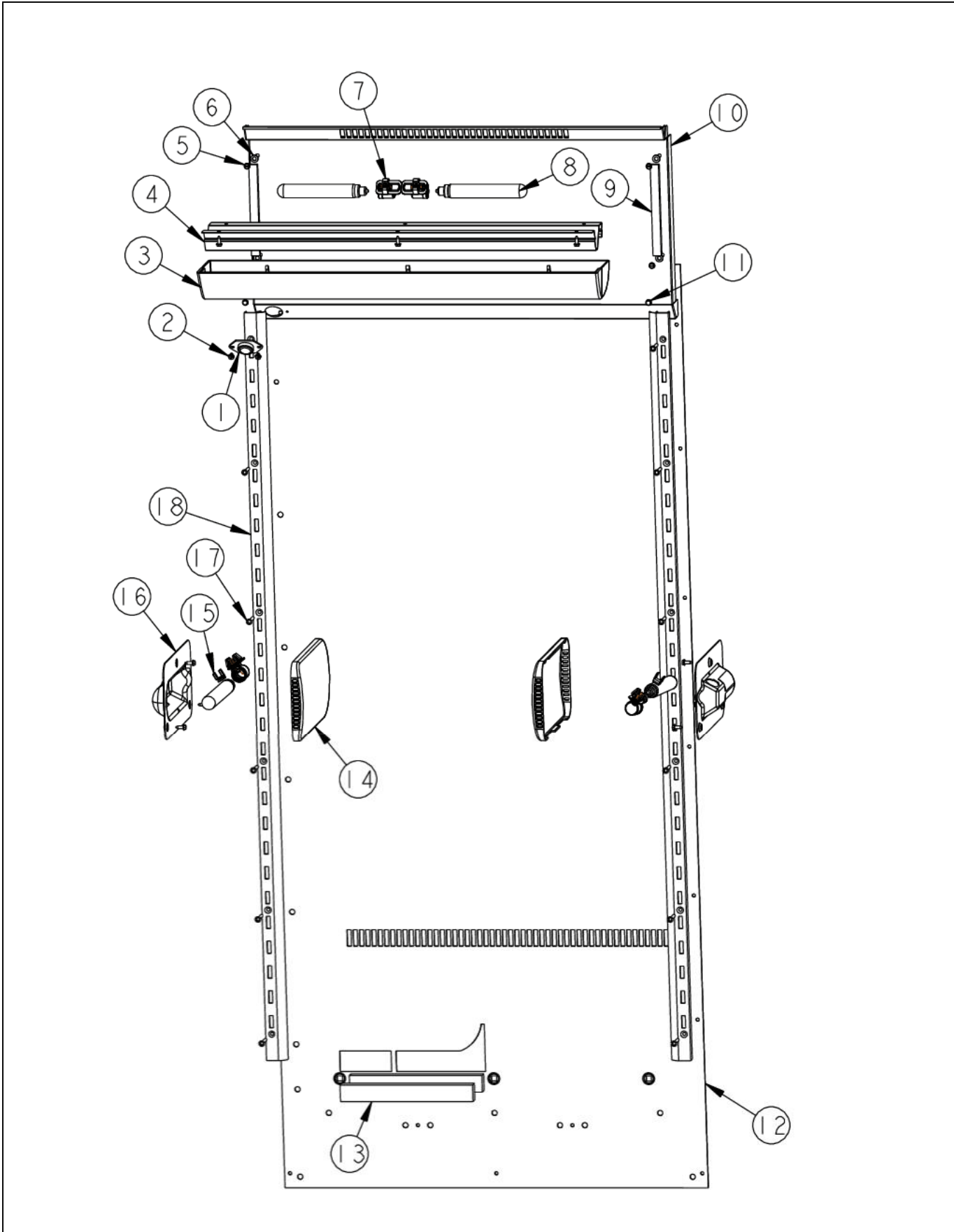
Item	Part No.	Name	Qty	Uom	NOTES
1	F20913719	TUBE EVAP AR 30	1	EA	
2	PB920246	CAPILLARY TUBE	1	EA	
3	F2096669	TUBE-DRIER COND	1	EA	
4	PM010616	DRIER - HIGH SIDE	1	EA	
5	F2097740	TUBE PROCESS	1	EA	
6	PB920171	CONDENSER ASM	1	EA	
7	F20911126	TUBE SUCTION AR 30	1	EA	
8	F20910729	TUBE DISCHARGE AF AR 30	1	EA	
9	G50911820	COMPRESSOR KIT	1	EA	
Comments for Part Num. G50911820					
bradleysapplianceservice@shaw.ca on Aug 24, 2018					
SUBS TO: 068640-000 COMPRESSOR KIT (COMES WITH INVERTER)					
SEE BULLETIN: TR-0101A-SP					
Not Shown	NOTE	(Includes Drier)		EA	
10	PM910457	EVAPORATOR AR 30	1	EA	
11	049987-000	MS HEAT EXCH ASM AR 36 30	1	EA	





Item	Part No.	Name	Qty	Uom	NOTES
<p>Comments for Part Num. 049987-000</p> <p>bradleysapplianceservice@shaw.ca on Sep 22, 2017 SUBS TO: 049987-000 HEAT EXCHANGER AR 30" / 36" crystal@knservice.com on Sep 22, 2017 This new aluminum h/e melts where it meets the copper tip when welding during a repair. Any recommendations to prevent this?</p> <p>Reply by corcoran1@cox.net on Dec 21, 2017 Try heat sink and wrap it in wet towel, use oxy-acetylene torch as opposed to map gas</p> <p>Reply by bradleysapplianceservice@shaw.ca on Jun 5, 2018 Yes, we have used heat paste but wet rags torn into thin strips works just as good and readily available.</p> <p>Reply by tim@tnrappliance.com on Dec 20, 2018 this new aluminum is crap can barely heat it and the copper tip comes off. i now get to redo the job when i get another heat exchanger. has anyone used an epoxy to set the tubes.</p> <p>bradleysapplianceservice@shaw.ca on Jun 5, 2018 Use caution when brazing, must use heat sink to avoid melting the aluminum. Use heat paste or wet rags. Also be sure check ports before installing. We have had a plugged port from factory when they installed the copper ends they closed off the port internally. Can't be seen easily so use nitrogen to blow through ports to be sure they are not plugged. It would have been nice to see at least 3 more inches of copper on the ends. It's easier to cut the above tubing to size than deal with these stubby copper ports.</p> <p>info@oceanicrepair.com on Oct 1, 2019 I have been using Lokring and its been perfect. If I do not have the fitting, going over board with heat trap paste and a wet rag also works.</p>					

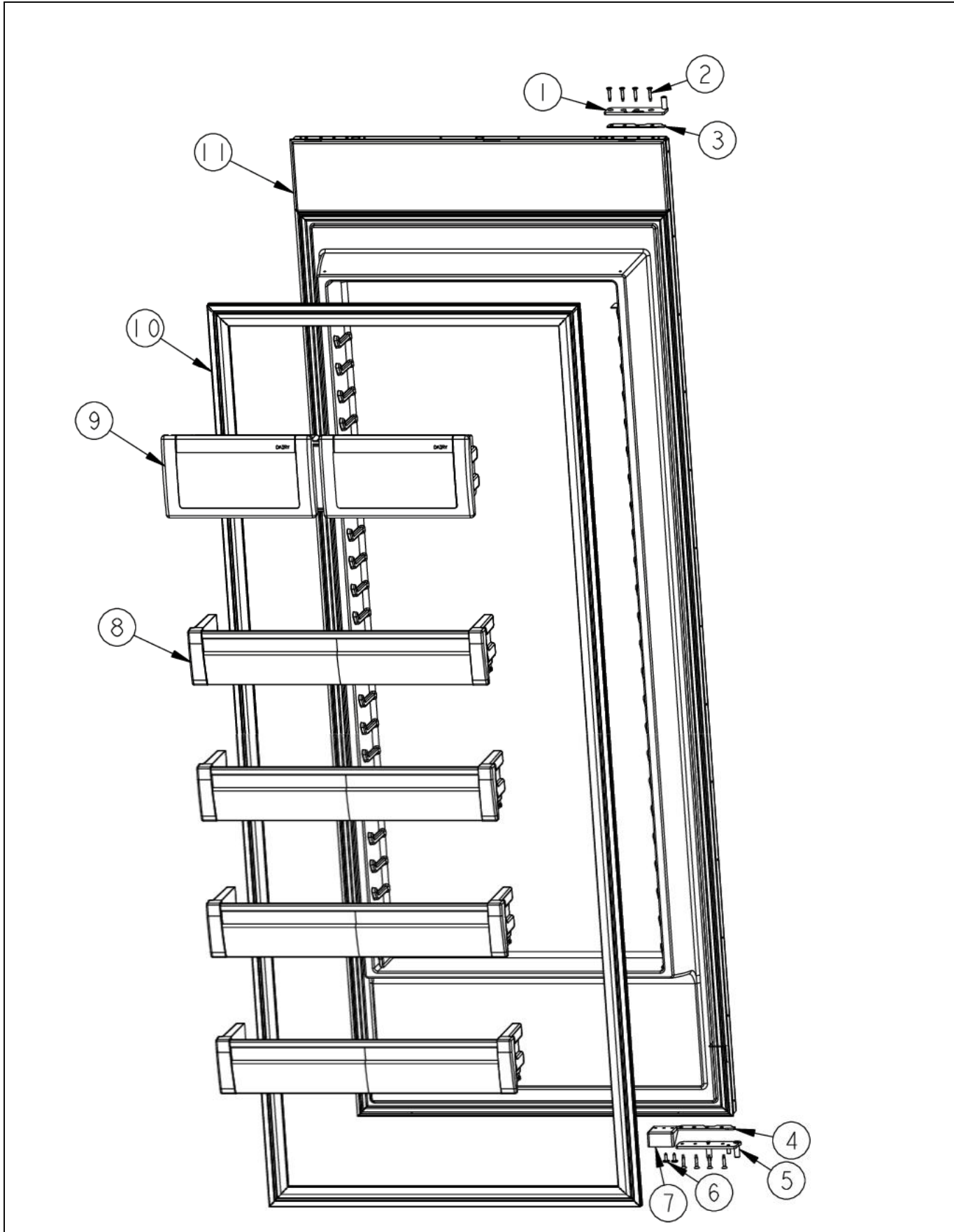
REFRIGERATOR COMPARTMENT

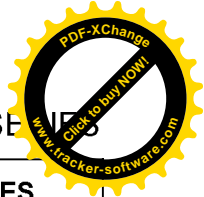




Item	Part No.	Name	Qty	Uom	NOTES
1	C8983701	THERMISTOR	1	EA	
2	M0211014	SCREW-SM	1	EA	Not available online / Call for pricing and availability
3	020114-000	COVER LIGHT ASM AF/AR 30 SXS 48 FF	1	EA	
4	L2099492	BRACKET LIGHT SXS 48 FF	1	EA	
5	PD020238	SCR WH HEX WSHR HD SLTD #8-18 X 1/2	1	EA	
6	PD040150	WASHER FLAT NYLON #10	1	EA	
7	PE950125	LIGHT SOCKET	1	EA	
8	004528-000	LAMP, 40 WATT BLUE LIGHT	1	EA	
9	PB070288	1/4" X 1/2" CLOSED CELL SPONGE	1	EA	
10	L20914101	COVER EVAP AR 30	1	EA	
11	PD020194	SCR, HEX SRTD WSHR HD, #8-18 X 1/2	1	EA	
12	L20910734	COVER LARGE SUMP AR 30	1	EA	
13	A3030361	GASKET RED	1	EA	
14	PK930346	COVER LIGHT	1	EA	
15	B5733302	CLIP-GROUND	1	EA	
16	10270203	HOUSING-LIGHT V10270203	1	EA	
17	M0238535	SCREW-SM	1	EA	
18	PM910280	LADDER SIDE AF 30 36	1	EA	

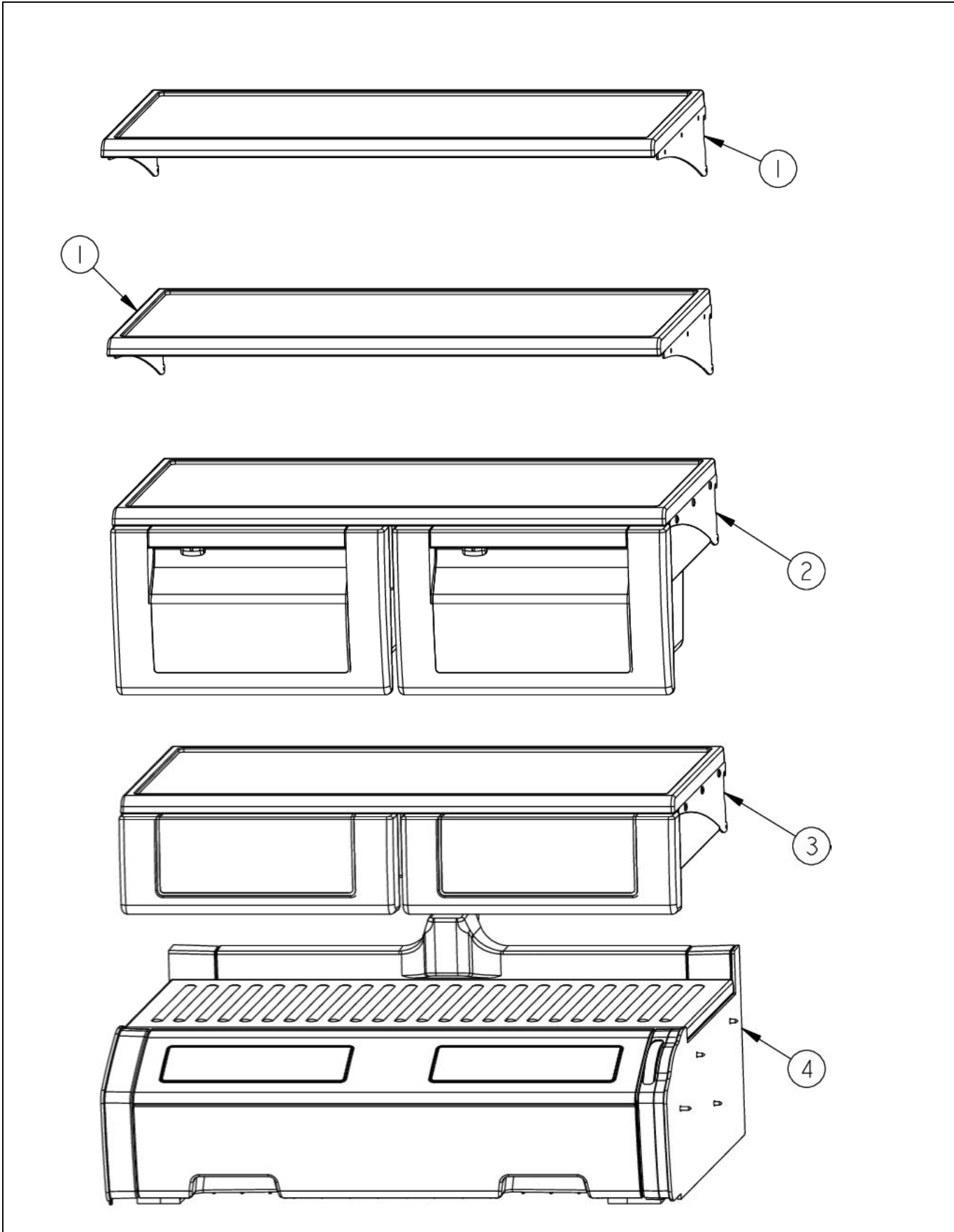
REFRIGERATOR DOOR FOAM AREA

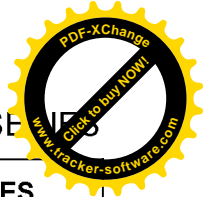




Item	Part No.	Name	Qty	Uom	NOTES
1	PC020279	PIVOT PL ASM LH UP PRO/DES	1	EA	
Not Shown	PC020278	PIVOT PL ASM RH UP PRO/DES	1	EA	
2	PD920174	10X7/8 PHILLIPS SMA TRI LOBE SA	1	EA	
3	PD040162	SPACER-DOOR HINGE	1	EA	
4	001617-000	SPACER,NYL,PIVOT PLATE	1	EA	
5	016182-000	PIVOT PL ASM LH LW PRO/DES	1	EA	
PC020276	016181-000	PIVOT PL ASM RH LW PRO/DES	1	EA	
6	M0210458	SCR 8-18 X 5/8 WAFER PH SMS	1	EA	
7	PD050019	STRIKER DOOR SWITCH	1	EA	
8	036886-000	DOORBIN ASM SXS 48 FF	1	EA	
9	V12203602	DAIRY MODULE ASSY #	1	EA	
10	001955-000	SERV GASKET FACE CHARGE	1	EA	
Not Shown	NOTE	(BEFORE 06-10-08)		EA	
10	005448-000	GASKET,ASM,30,AFAR VID# 602711327-17	1	EA	
Not Shown	NOTE	(ON OR AFTER 06-10-08)		EA	
11	G32915041	DOOR ASM AR 30	1	EA	
Not Shown	NOTE	(Includes Gasket)		EA	

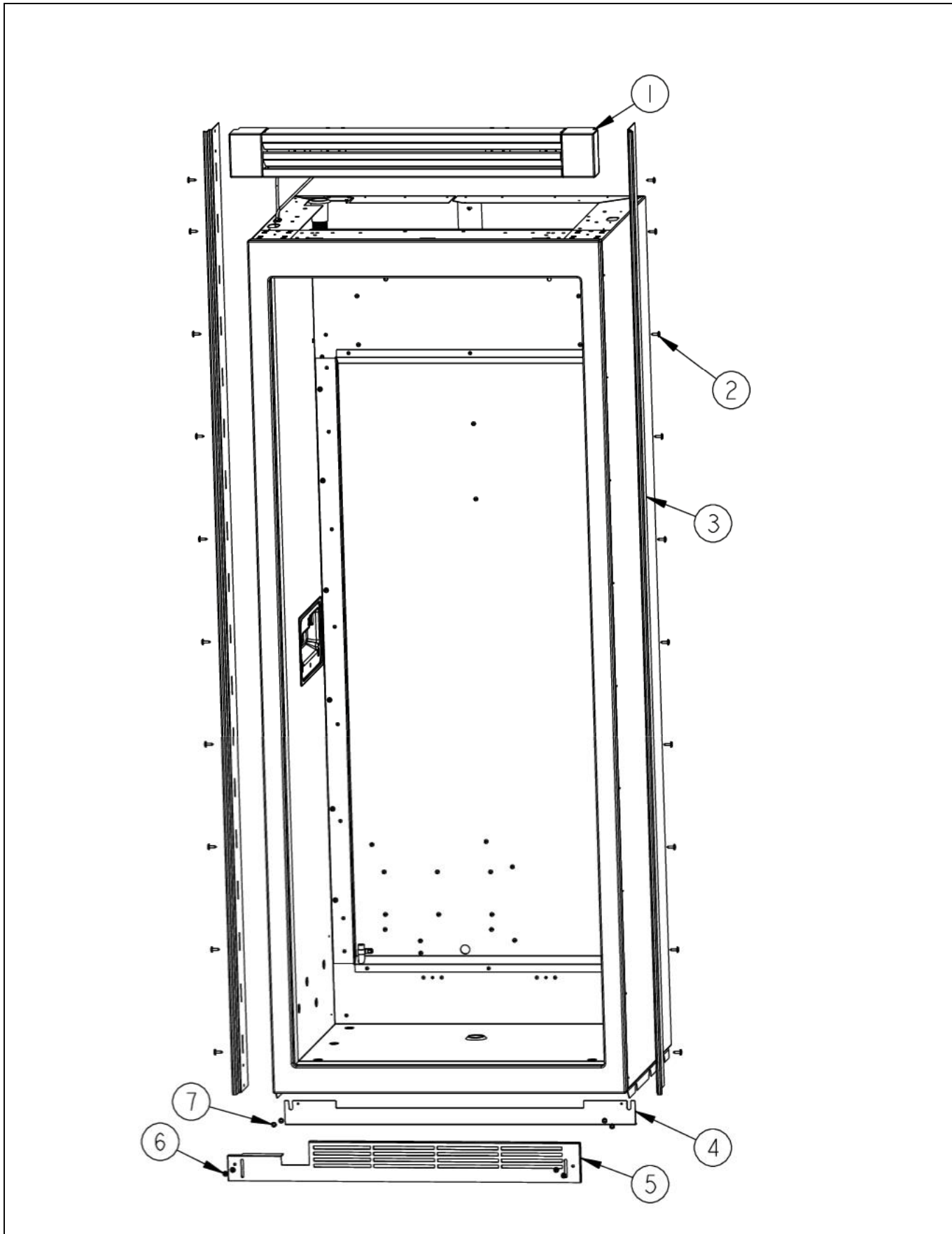
REFRIGERATOR SHELVING





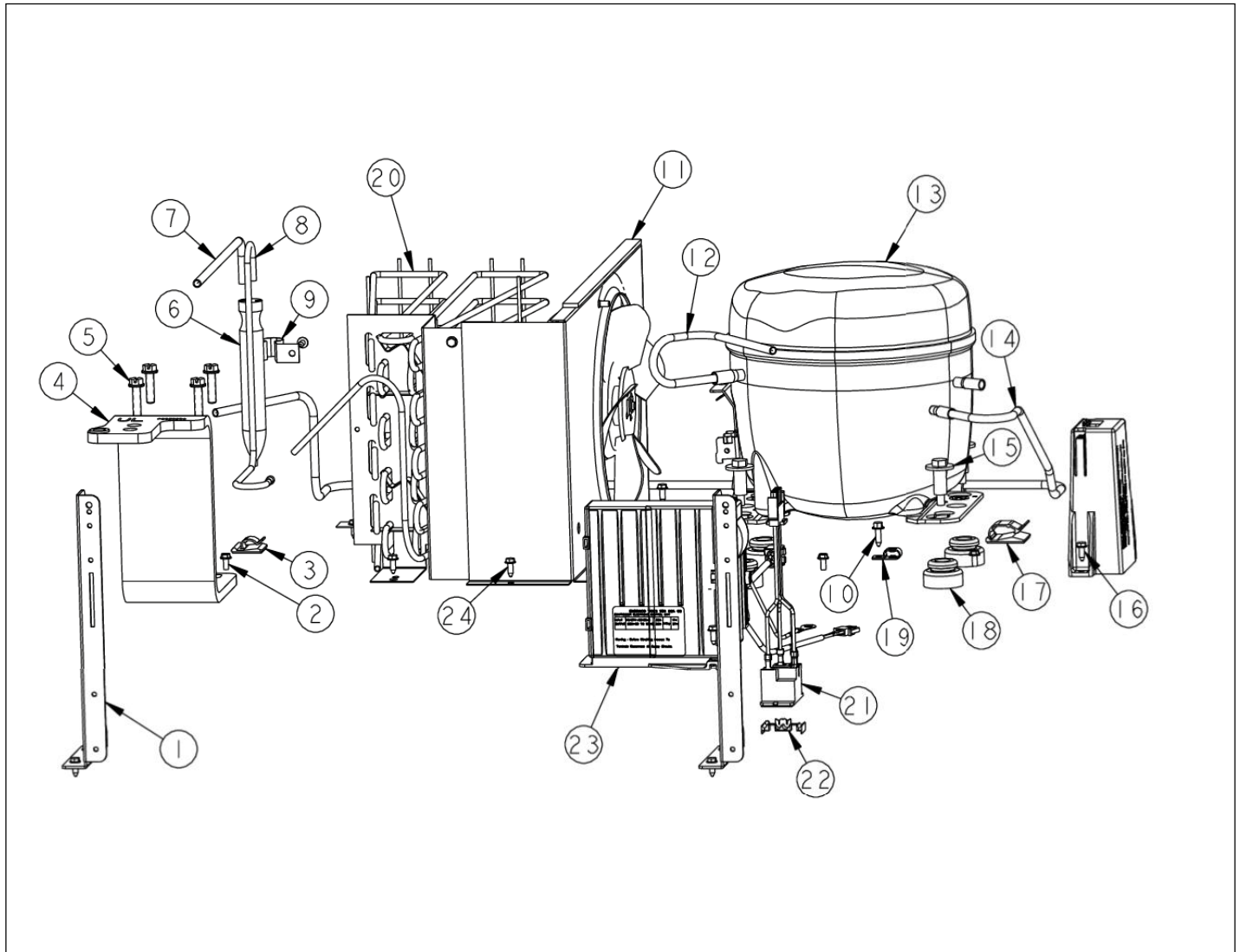
Item	Part No.	Name	Qty	Uom	NOTES
1	043624-000	SHELF ASM GLASS 30 AR 48 FF	1	EA	
2	Produce Drawer Area	FOR BREAKDOWN SEE PAGE 003	1	EA	Not available online / Call for pricing and availability
3	DELI DRAWER AREA	FOR BREAKDOWN SEE PAGE 003	1	EA	
4	Meat Saver Drawer	FOR BREAKDOWN SEE PAGE 004	1	EA	Not available online / Call for pricing and availability

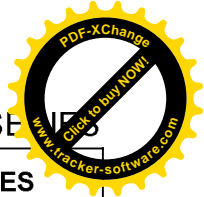
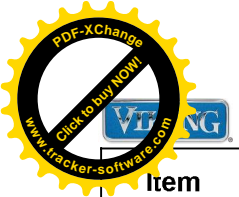
UNIT EXTERIOR





Item	Part No.	Name	Qty	Uom	NOTES
1	002877-000	COMPLETE GRILLE ASSEMBLY - LEFT HINGE	1	EA	
Not Shown	002841-000	GRILLE,ASM,AR AF 30 PROI R	1	EA	
Not Shown	NOTE	(FOR BREAKDOWN SEE PAGE 011)		EA	
2	M0215318	SCREW-SM	1	EA	
3	PK920066	TRIM, EXTRU, SIDE DES	1	EA	
4	000206-002	KICKPLATE, LWR	1	EA	
5	C90910725BK	VENTED TOE GRILLE (LEFT HINGE)	1	EA	Not available online / Call for pricing and availability
Not Shown	C90910758BK	GRILLE TOE VENTED 30 R *BK*	1	EA	
6	M0210443	SCREW-E SM VM0210443	1	EA	
7	40370P01	NYLON FLAT WASHER V40370P01	1	EA	
NI	G50915030	GRILLE TOE ASM AF AR 30 L	1	EA	
Not Shown	NOTE	(CONTAINS ITEMS #4 - #7)		EA	
Not Shown	G50915029	GRILLE TOE ASM AF AR 30 R	1	EA	
Not Shown	NOTE	(CONTAINS ITEMS #4 - #7)		EA	





Item	Part No.	Name	Qty	Uom	NOTES
1	K20912569	BRACKET GRILLE SUPPORT	1	EA	
2	PD020010	10 X 3/8 GREEN GROUNDING SCREW	1	EA	
3	M0104106	CLIP-CORD VM0104106	1	EA	
4	PC920204	HINGE ASM UL	1	EA	
Not Shown	PC920203	HINGE ASM UR	1	EA	
5	000570-000	FASTENER, BOLT, 1/4-20 IHXWS 1" S ZN SER	1	EA	
6	PM010616	DRIER - HIGH SIDE	1	EA	
7	F2097740	TUBE PROCESS	1	EA	
8	F2096669	TUBE-DRIER COND	1	EA	
9	10547001	CLIP-DRIER V10547001	1	EA	
10	PD020195	SCR 8-18 X 5/8	1	EA	
11	G5096494	COND. FAN ASSY	1	EA	
12	F2096507	TUBE-PROCESS GRN	1	EA	
13	G50911820	COMPRESSOR KIT	1	EA	

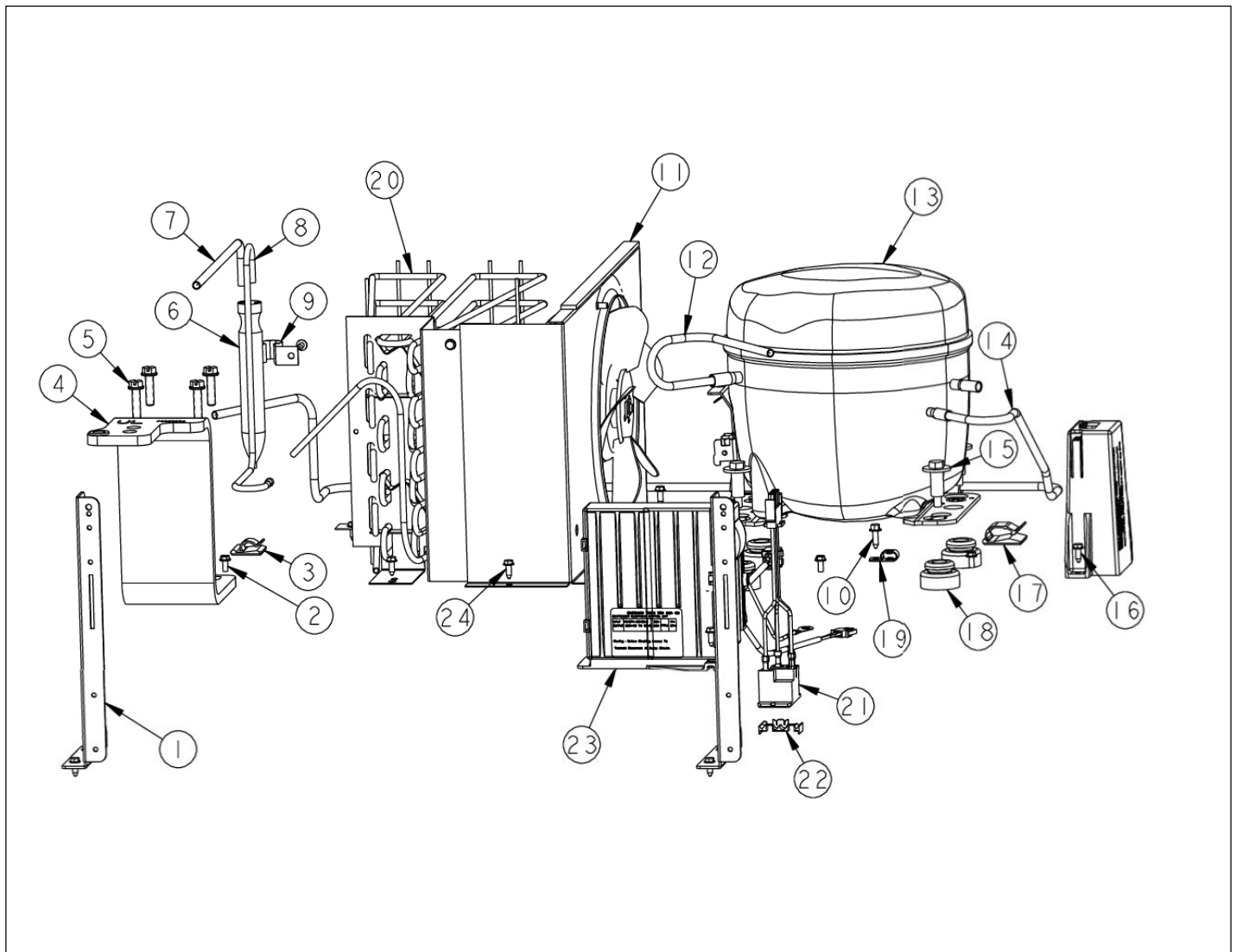
Comments for Part Num. G50911820

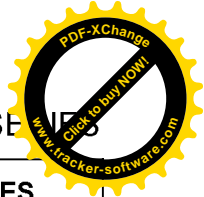
bradleysapplianceservice@shaw.ca on Aug 24, 2018

SUBS TO: 068640-000 COMPRESSOR KIT (COMES WITH INVERTER)

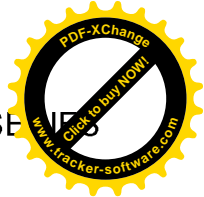
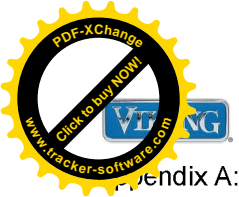
SEE BULLETIN: TR-0101A-SP

Not Shown	NOTE	(Includes Drier)		EA	
14	F20910729	TUBE DISCHARGE AF AR 30	1	EA	
15	M0221523	SCREW - SHLDR	1	EA	
16	050894-000	ASSY, BKT, PWR SUPPLY, 24VDC, REF	1	EA	
17	M0104102	CLIP-CORD RED	1	EA	
18	10835901	GROMMET RUBBER V10835901	1	EA	
19	002573-000	CLAMP CORD	1	EA	
20	PB920171	CONDENSER ASM	1	EA	
21	G50915958	ASM AR SABBATH MODE RELAY	1	EA	
22	M0327801	TAP-ELECTRO	1	EA	
23	011666-000	INVERTER,CMPR,ASM	1	EA	



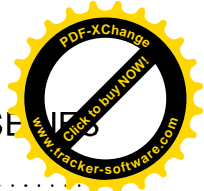


Item	Part No.	Name	Qty	Uom	NOTES
<p>Comments for Part Num. 011666-000</p> <p>gboltz@VikingRange.com on Aug 9, 2018</p> <p>See 2018-01P Parts Bulletin</p>					
24	PD020194	SCR, HEX SRTD WSHR HD, #8-18 X 1/2	1	EA	



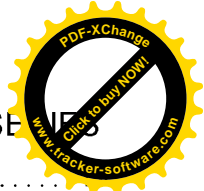
Appendix A:Pages Index

10916507 POWER CORD	1
CONTROL AREA	2
DELI DRAWER	3
DOOR SKIN AREA	4
EVAPORATOR AREA	5
LOWER UNIT AREA	6
MC COVER AND UPPER GRILLE AREA	7
MEAT SAVER DRAWER	8
PE070785 HIGH VOLT HARNESS	9
PE070877 MACHINE HARNESS	10
PE970464 LOW VOLT HARNESS	11
PE970609 CONTROL BOARD HARNESS	12
PE970641 FAN RESISTOR JUMPER	13
PRODUCE AREA	14
REFRIGERANT SYSTEM	15
REFRIGERATOR COMPARTMENT	16
REFRIGERATOR DOOR FOAM AREA	17
REFRIGERATOR SHELVING	18
UNIT EXTERIOR	19
UPPER UNIT AREA	20



Appendix B: Parts Index

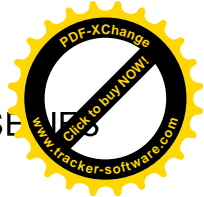
000206-002	19	003628-003BT	4
000268-000	4	003628-004SG	4
000570-000	6, 20	003628-005GG	4
001617-000	17	003628-006WH	4
001955-000	17	003628-007AL	4
002573-000	20	003628-008BU	4
002667-000	6	003628-011FG	4
002668-000	6	003628-012VB	4
002838-000	7	003628-013CB	4
002839-000	7	003628-014EP	4
002840-000	7	003628-015PL	4
002841-000	19	003628-016CH	4
002877-000	19	003628-017TP	4
003617-000	4, 4	003628-018CW	4
003618-002BK	4	003628-019OG	4
003618-003BT	4	003628-020GM	4
003618-004SG	4	003628-021SA	4
003618-005GG	4	003628-022SE	4
003618-006WH	4	003628-023IB	4
003618-007AL	4	003628-024AR	4
003618-008BU	4	003628-025RR	4
003618-011FG	4	003628-026PM	4
003618-012VB	4	003628-027MS	4
003618-013CB	4	003657-000	4
003618-014EP	4	003678-000	4
003618-015PL	4	004528-000	16
003618-016CH	4	004551-000	6, 8
003618-017TP	4	005319-000	2
003618-018CW	4	005448-000	17
003618-019OG	4	009925-000	14
003618-020GM	4	011666-000	20
003618-021SA	4	014581-000	4, 4
003618-022SE	4	016181-000	17
003618-023IB	4	016182-000	17
003618-024AR	4	020114-000	16
003618-025RR	4	020822-000	8
003618-026PM	4	036886-000	17
003618-027MS	4	043624-000	3, 14, 18
003622-000	4	044214-000	3, 14
003628-002BK	4	044219-000	3, 14
		044232-000	8



584-000	8	G50915029	
045692-000	8	G50915030	19
046235-000	3, 14	G50915603	6
046255-000	3, 14	G50915958	20
049987-000	5, 15	G5096494	20
050894-000	20	K20910060	2
056843-000	4	K20910061	2
060890-000	6	K20911832	6
060891-000	6	K20912393	5
10270203	16	K20912394	5
10547001	20	K20912569	20
10835901	20	K20914102	5
10916507	1, 7	K20915000	2
12064001	2	K20915675	7
12115101	5	K20915953	6
40370P01	19	K20916342	7
A3030361	2, 5, 16	K2097526	4
A3189370	7	K2098044	6
A4554806	6, 7	K2098096	6
A4554817	2, 6	K2098654	2
B20911817	7	K2099402	2
B20911818	7	K2099455	7
B20915627	6	K2099459	7
B20916336	7	K2099460	7
B20916338	7	K2099930	7
B2096961	7	K2099932	7
B5733302	16	L20910734	16
C8983701	16	L20913709WH	5
C90910725BK	19	L20914101	16
C90910758BK	19	L2099492	16
F20910729	15, 20	M0104102	6, 20
F20911126	5, 15	M0104106	2, 5, 6, 20
F20913719	5, 15	M0204303	4
F2096507	20	M0210443	19
F2096669	15, 20	M0210458	4, 17
F2097740	15, 20	M0211014	16
F2099927	6	M0211021	8
G32915041	17	M0215318	19
G50911820	15, 20	M0220417	6, 7
G50914134	5	M0221523	6, 20
G50914188	5	M0223509	7



224128	2, 8	PD050019	
M0238535	16	PD920161	3, 14
M0238846	2	PD920162	8
M0253916	6	PD920174	17
M0288120	2	PD940090	6
M0327801	6, 20	PD940091	6
M0585504	2	PD940094	6
M0585506	2	PD940107	6
Meat Saver Drawer	18	PE010030	4
PB070288	5, 5, 16	PE010031	4
PB070355	7	PE010068	4
PB070356	7	PE010076	4
PB070357	7	PE030001PVD	4
PB920171	15, 20	PE030012PVD	4
PB920246	5, 15	PE050248	6
PB970171	7	PE070728	2
PC020278	17	PE070785	9
PC020279	17	PE070877	10
PC020288	6	PE930101	4
PC020289	6	PE940176	4, 4
PC040010	2, 6, 7	PE950122	2
PC910015	6	PE950125	16
PC920144	6	PE950147	6
PC920145	6	PE950149	2
PC920149	6	PE950183	2
PC920166	6	PE970464	11
PC920203	20	PE970609	12
PC920204	20	PE970641	13
PD020010	6, 20	PK030439	3, 14
PD020013	2	PK030445	5
PD020032	3, 5, 14	PK030446	5
PD020194	2, 5, 6, 7, 16, 20	PK030456	2
PD020195	8, 20	PK030457	2
PD020233	7	PK050004	7
PD020238	5, 16	PK910089	7
PD020274	6	PK920066	19
PD030006	4	PK930172	8
PD030146	6	PK930173	8
PD040150	5, 16	PK930174	8
PD040157	7	PK930175	8
PD040162	17	PK930176	8



PK930283	8
PK930284	8
PK930305	3
PK930307	8
PK930308	8
PK930309	8
PK930346	16
PK930347	6
PM010616	15, 20
PM910068	4
PM910280	16
PM910287	8
PM910288	8
PM910325	2
PM910334	8
PM910342	3, 14
PM910343	3, 14
PM910457	5, 15
Produce Drawer Area	18
V12203602	17