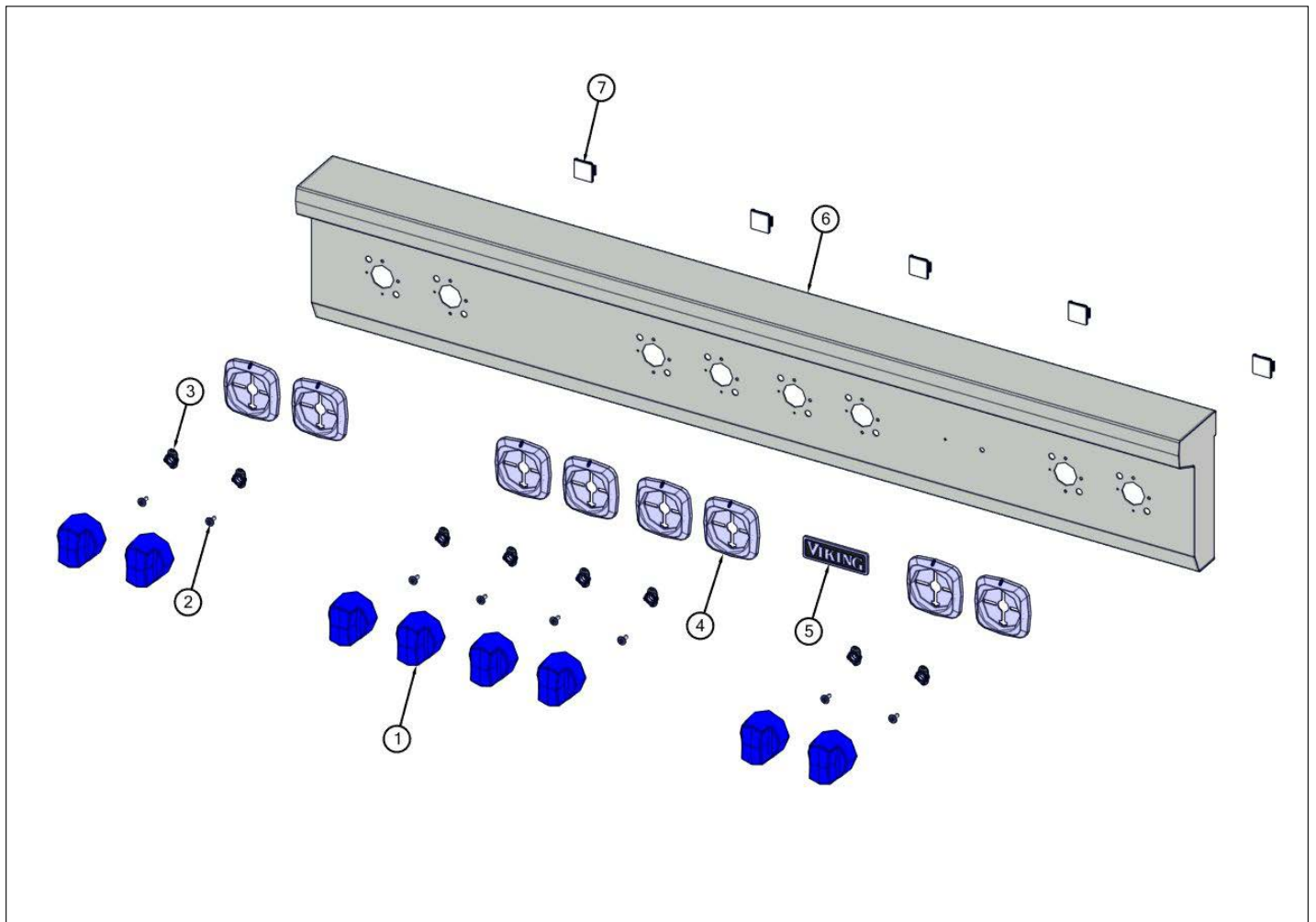


VRT5488BSS

Control View	1
Surface Cooking View	2
Burner Box Asm View	3
Gas Asm View	4
Electrical View	5
Decor View	6
Appendix A:Pages Index	A
Appendix B:Parts Index	B

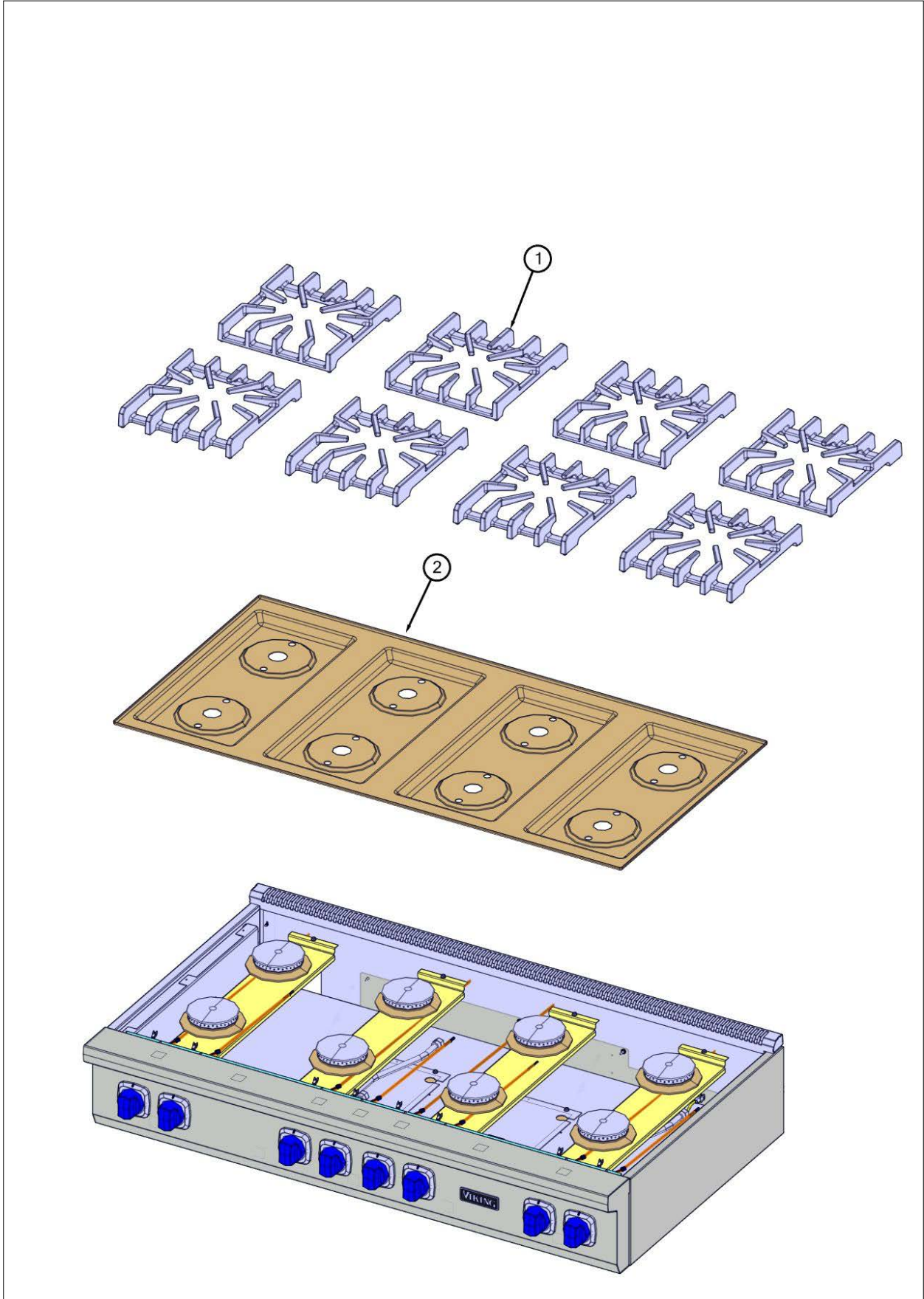
Control View





Item	Part No.	Name	Qty	Uom	NOTES
1	063759-2809	KNOB, BNR, TOP, PRO ASSY BLK CR (SEE 059023-000)	8	EA	
2	PD020046	' #8 X 1/2 SCREWS	8	EA	
3	044512-000	BEARING, BEZEL, ASM	8	EA	
4	048326-000	BZL, KNOB	8	EA	
5	062341-000	NAMEPLATE, VIKING, 3.500", W/LOC PINS	1	EA	
6	064369-2820	ASM, WELD, PANEL, CONTROL, VRT5488BSS, W/GRAPHICS	1	EA	
Not Shown	NOTE	(MUST ORDER ITEM 7 WHEN REPLACING CONTROL PANEL)		EA	
7	m0104106	CLIP-CORD VM0104106	5	EA	

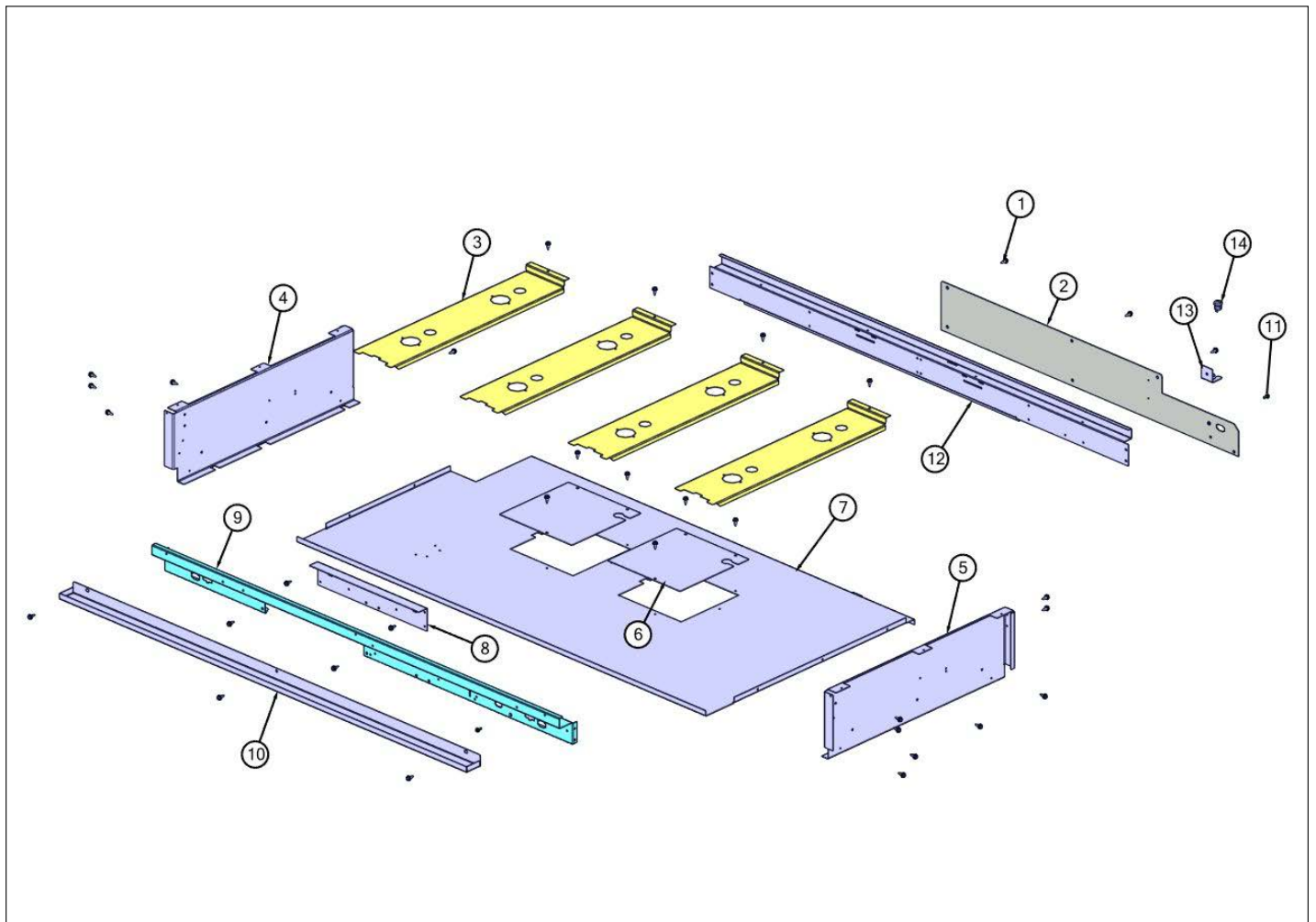
Surface Cooking View





Item	Part No.	Name	Qty	Uom	NOTES
1	049420-000	GRATE, BURNER, ASM	8	EA	
NI	049416-000	BUMPER, GRATE	32	EA	
2	E9109800BK	48" SEALED COOKTOP 8B *BK*	1	EA	

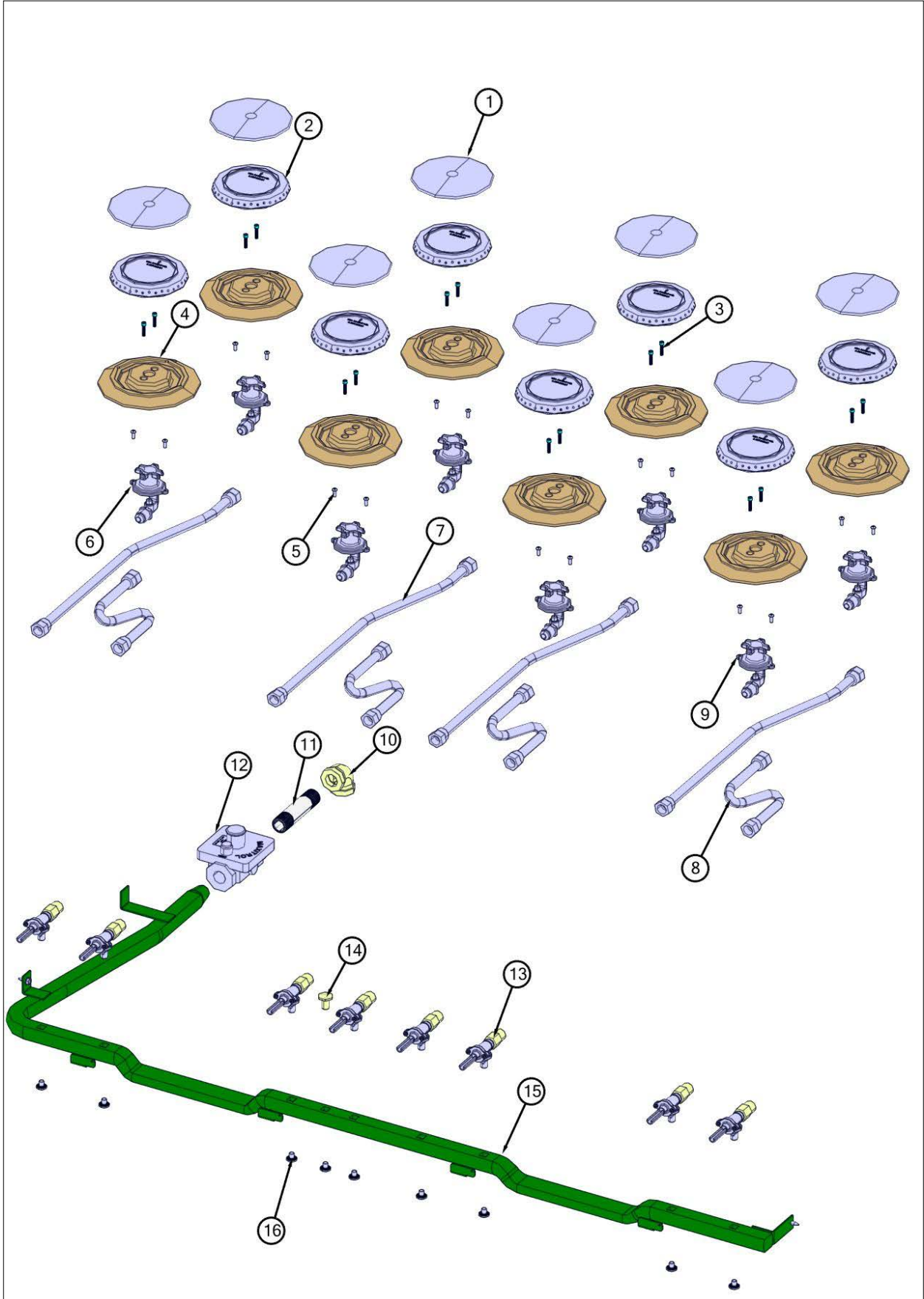
Burner Box Asm View





Item	Part No.	Name	Qty	Uom	NOTES
1	003860-000	10-18 x .500 FASTNR,SCR,HXWH,STL,ZPLT	39	EA	
2	064419-000	RANGE TOP, PNL, BACK, VRT CUSTOM	1	EA	
3	002923-000	BURNER MODULE SUPPORT	4	EA	
4	003481-000	BURNER BOX SIDE, LH	1	EA	
5	002755-000	BURNER BOX SIDE, RH	1	EA	
6	064498-000	COVER, ACS, DSI	2	EA	
7	064466-000	BOX, BNR, BOT, VRT5486G/VRT5488B	1	EA	
8	012771-000	RANGETOP, BRKT, FR, VDSC CUSTOM	1	EA	
9	008461-000	SUPPORT, FRONT	1	EA	
10	038633-000	GUTTER, SPILL, 48"	1	EA	
11	PD020010	10 X 3/8 GREEN GROUNDING SCREW	2	EA	
12	008464-000	BRNR BOX,REAR,FLAT,SUPPORT,VD SC5484GQ 48"	1	EA	
13	064586-000	BRKT, STRN, RLF	1	EA	
14	PE070069	STRAIGHT-THRU BUSHING	1	EA	

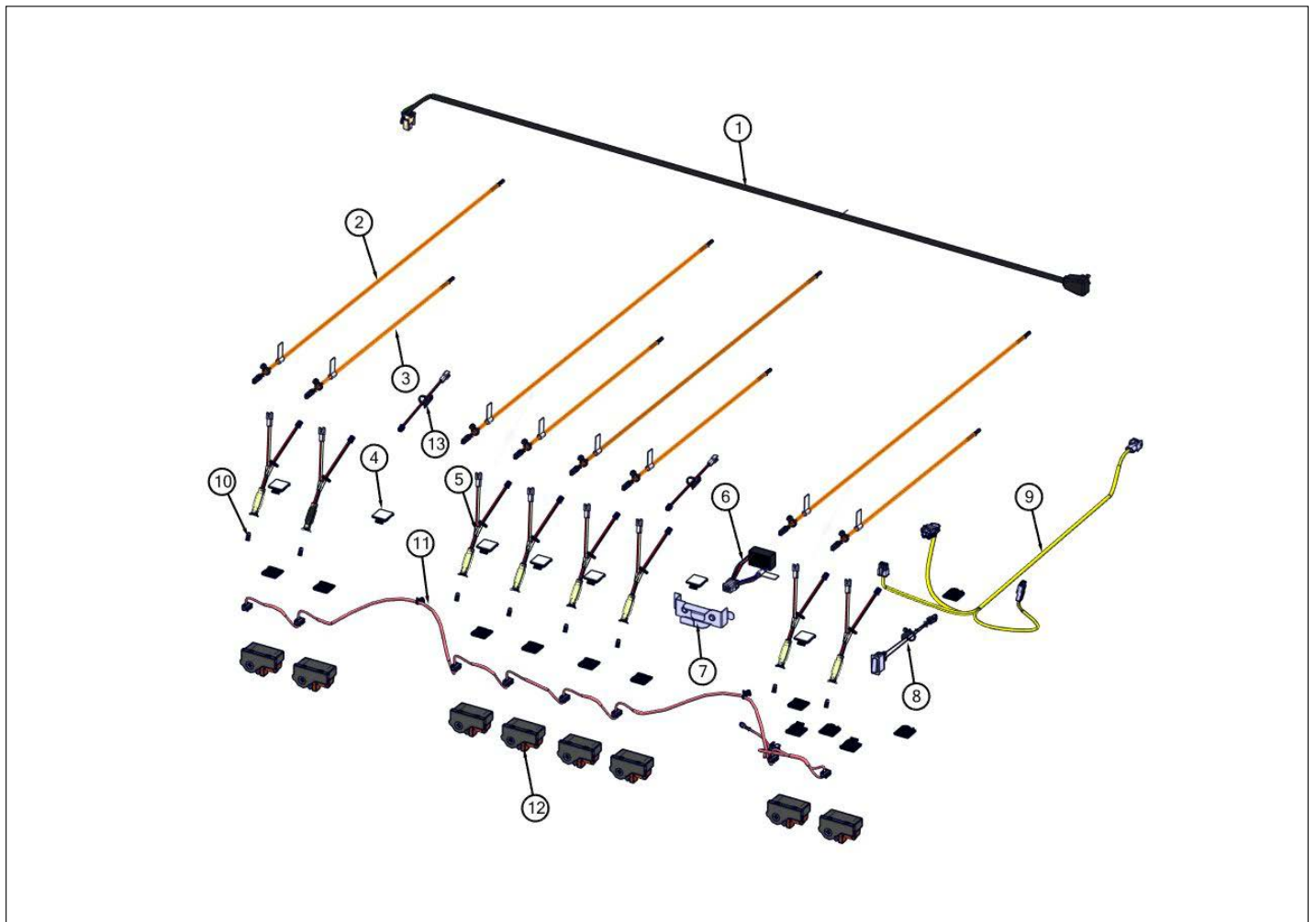
Gas Asm View





Item	Part No.	Name	Qty	Uom	NOTES
1	066958-000	D BURNER CAP *MATTE BLACK*	8	EA	
2	018200-000	ADJUSTED SEALED BURNER HEAD	8	EA	
3	009197-000	#6-32 X 5/8 18-8 SS NC SOC CAP	16	EA	
4	066810-042	BURNER, BASE, ASM, BLK	8	EA	
5	PD020076	6-32 X 3/8" PHILL PAN MS	16	EA	
6	066197-042	15000 BTU NAT JETHOLDER	7	EA	
6	001394-046	12.5 K BTU LP JETHOLDER	7	EA	
7	PB020193	16" FLEX TUBING W/CONNECTORS	4	EA	
8	PB020192	10" FLEX TUBING W/CONNECTORS	4	EA	
9	066197-044	16600 BTU LP JETHOLDER	1	EA	
9	066197-041	18500 BTU NAT JETHOLDER	1	EA	
10	PB040053	1/2" 90 DEG. ELBOW	1	EA	
11	019938-000	NIPPLE, 1/2" NPT X 3.5" LONG, STEEL	1	EA	
12	013386-000	LP PRESSURE REGULATOR	1	EA	
12	PA070003	PRESSURE REGULATOR (NAT.)	1	EA	
13	061230-000	VALVE, BRS, ASM, TOP, BURNER, FLRE, FTG, 5/8-18 UNF	8	EA	
14	002884-000	MANIFOLD PLUG	1	EA	
15	011356-000	MANIFOLD, 48" 8B/6Q	1	EA	
16	PD010012	VALVE BOLT 1/4-20 UNC-2B 5/16" M.S.	9	EA	

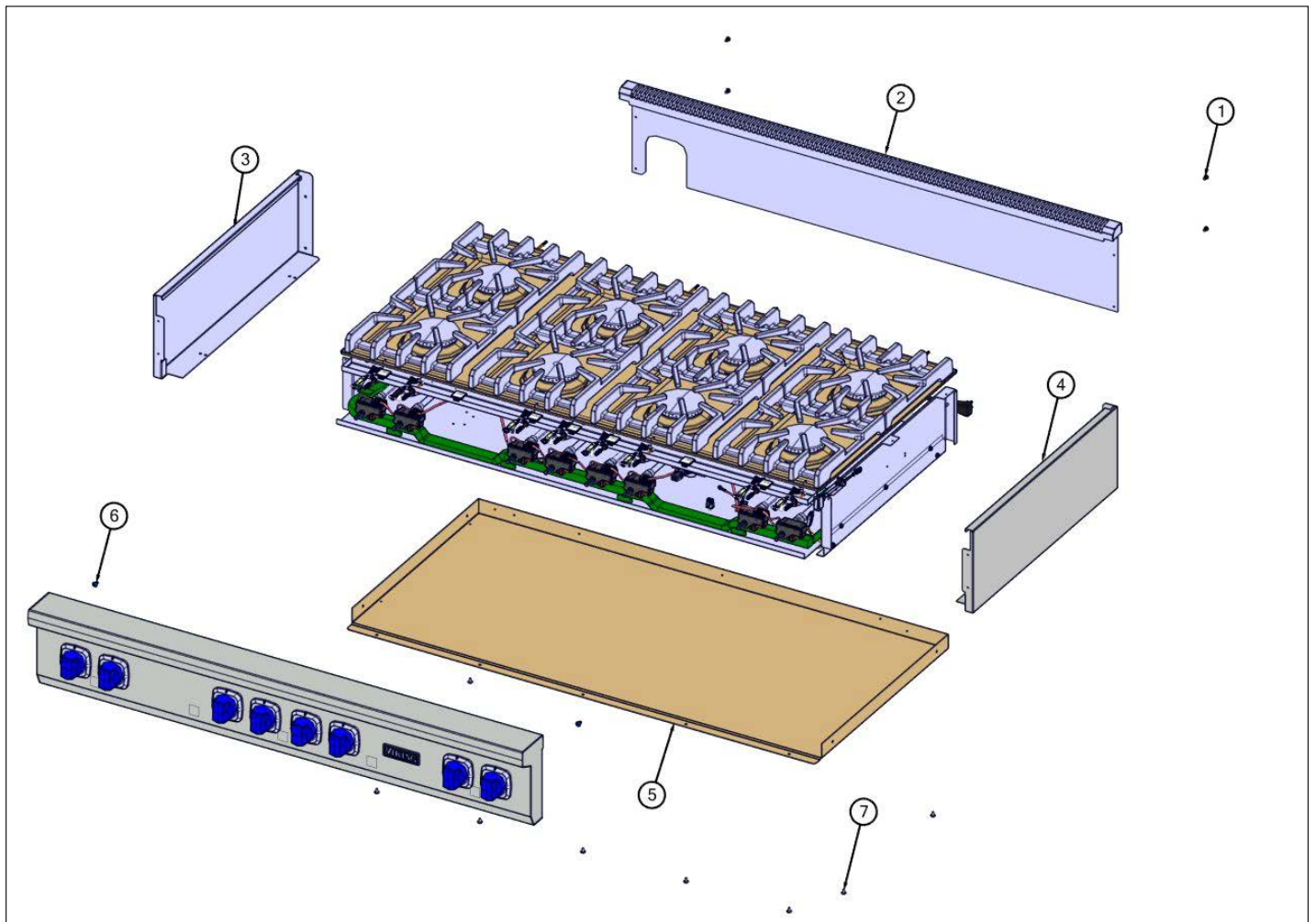
Electrical View





Item	Part No.	Name	Qty	Uom	NOTES
1	044747-000	CORD, SUPPLY, CORD	1	EA	
2	058659-604	HARN, VGR5, ELEC, BURN, REAR	4	EA	
3	058659-603	HARN, VGR5, ELEC, BURN, FRNT	4	EA	
4	049878-000	CORD, CLIP, ADHESIVE	19	EA	
5	048809-000	LAMP, LED, 12VDC, 2.84K, WHITE, ASM	8	EA	
6	069994-000	12 Volt Power Supply Kit	1	EA	
Not Shown	NOTE	See TC-0118-SP Service Bulletin		EA	
7	068310-000	BRKT, SHELF, POWER SUPPLY	1	EA	
Not Shown	NOTE	See TC-0118-SP Service Bulletin		EA	
8	046283-000	SWITCH, LIGHTS, ACCENT W/CONN	1	EA	
9	060214-000	HARN, VGRT5, MAIN	1	EA	
10	044937-000	LENS, COVER, LED, CLEAR	8	EA	
11	059139-000	HARN, VGR548, IRIS	1	EA	
12	035795-000	MODULE, IGN, GAS,SNGL	8	EA	
13	048482-000	HARNESS, LED, JUMPER (HPN-0923-1)	2	EA	

Decor View





Item	Part No.	Name	Qty	Uom	NOTES
1	PD020055	' #10 X 1/2" PAN PHIL. TEK.*SS*	4	EA	
2	062402-000	TRIM, IS, WELD, ASM, 48"	1	EA	
3	063761-000	PANEL, LH, VRT5	1	EA	
4	063760-000	PANEL, RH, VRT5	1	EA	
5	064372-000	PNL, BTM, VRT5486G/VRT5488B	1	EA	
6	014143-000	SCR 10-12 A SHLD TRP 1/2 S ZN BLUE	2	EA	
7	PD020032	SRW-8(A)X3/8"PH.WFR HD 7/16DIA*NICL	9	EA	



Appendix A:Pages Index

Burner Box Asm View	3
Control View	1
Decor View	6
Electrical View	5
Gas Asm View	4
Surface Cooking View	2



Appendix B:Parts Index

001394-046	4	064466-000	3
002755-000	3	064498-000	3
002884-000	4	064586-000	3
002923-000	3	066197-041	4
003481-000	3	066197-042	4
003860-000	3	066197-044	4
008461-000	3	066810-042	4
008464-000	3	066958-000	4
009197-000	4	068310-000	5
011356-000	4	069994-000	5
012771-000	3	E9109800BK	2
013386-000	4	PA070003	4
014143-000	6	PB020192	4
018200-000	4	PB020193	4
019938-000	4	PB040053	4
035795-000	5	PD010012	4
038633-000	3	PD020010	3
044512-000	1	PD020032	6
044747-000	5	PD020046	1
044937-000	5	PD020055	6
046283-000	5	PD020076	4
048326-000	1	PE070069	3
048482-000	5	m0104106	1
048809-000	5		
049416-000	2		
049420-000	2		
049878-000	5		
058659-603	5		
058659-604	5		
059139-000	5		
060214-000	5		
061230-000	4		
062341-000	1		
062402-000	6		
063759-2809	1		
063760-000	6		
063761-000	6		
064369-2820	1		
064372-000	6		
064419-000	3		