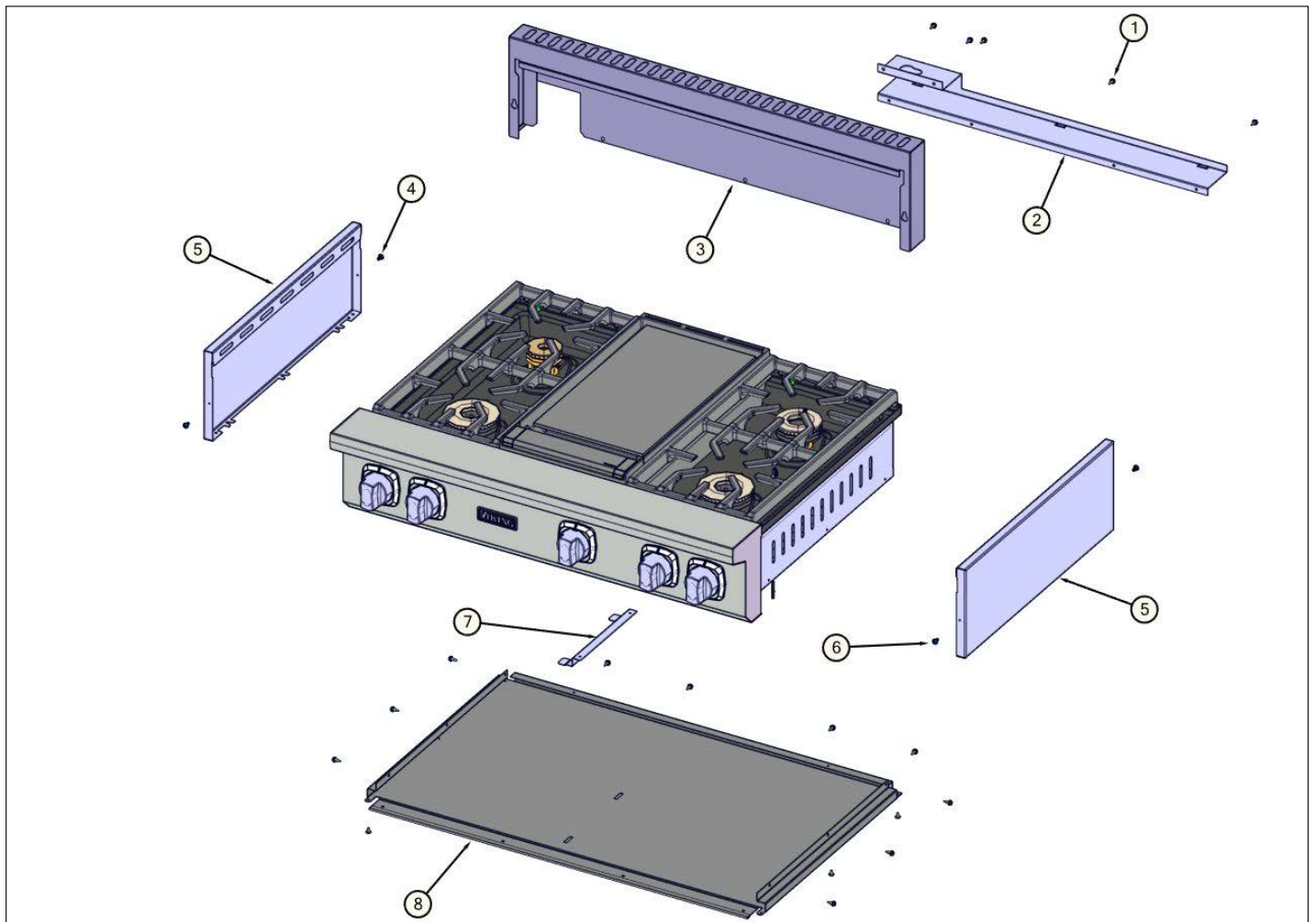


VRT7364GSS01

Decor View	1
Gas Asm View	2
Control View	3
Electrical View	4
Surface Cooking View	5
Appendix A:Pages Index	A
Appendix B:Parts Index	B

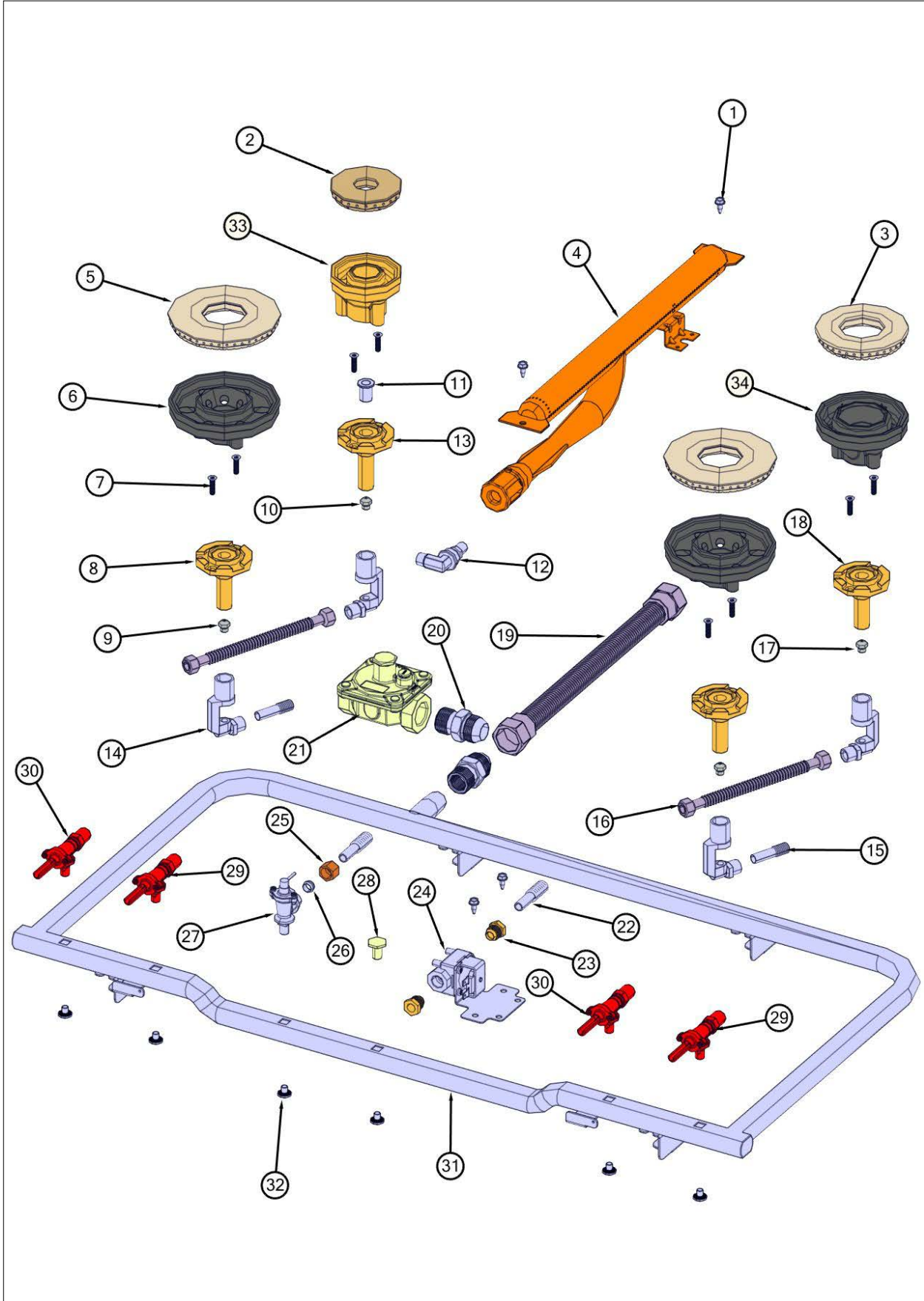
Decor View





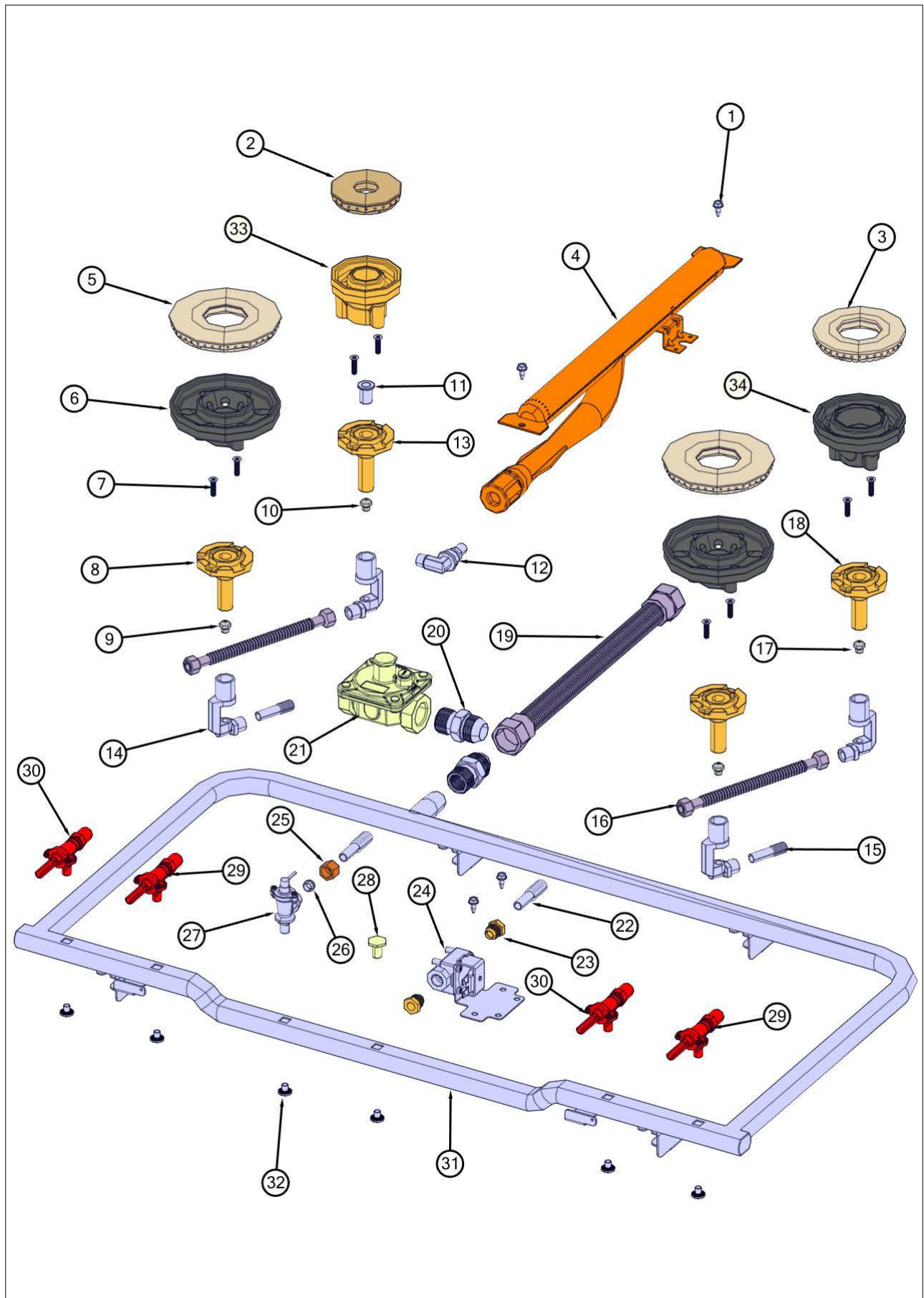
Item	Part No.	Name	Qty	Uom	NOTES
1	003860-000	10-18 x .500 FASTNR,SCR,HXWH,STL,ZPLT	15	EA	
2	068206-000	SHIELD, BRKT, VRT736	1	EA	
3	042117-000	TRIM, IS, VGR, 36"	1	EA	
4	003801-000	SHOULDER SCREW, #10	2	EA	
5	052427-000	COVER, OS, RH/LH UPPER	5	EA	
6	014143-000	SCR 10-12 A SHLD TRP 1/2 S ZN BLUE	2	EA	
7	046508-000	BRACKET, SPRT, BOT	1	EA	
8	046053-000	RANGETOP, PANEL, BOTTOM, VGRT736	1	EA	

Gas Asm View





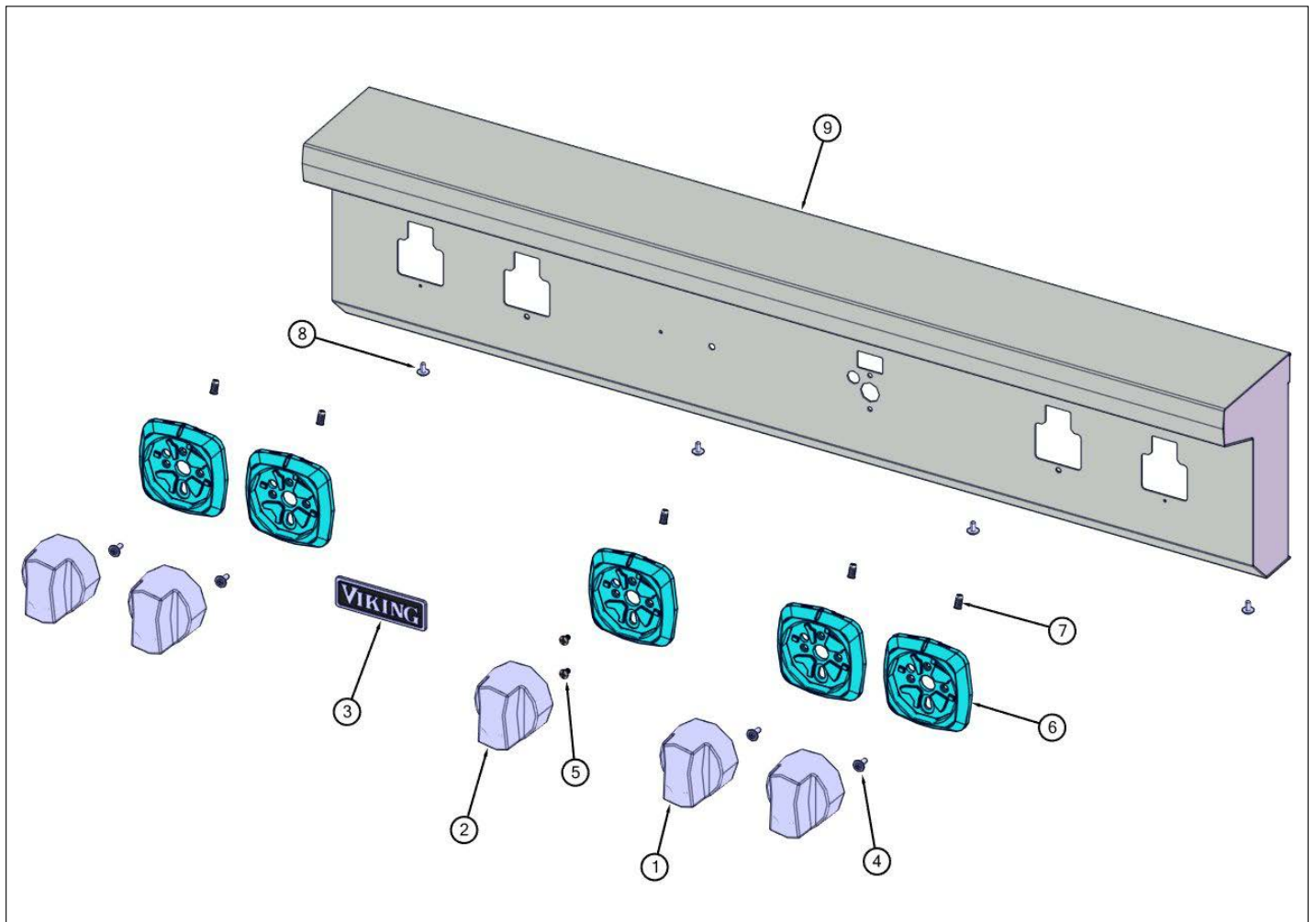
Item	Part No.	Name	Qty	Uom	NOTES
1	003860-000	10-18 x .500 FASTNR,SCR,HXWH,STL,ZPLT	4	EA	
2	066174-000	BURNER, HEAD, C	1	EA	
3	066169-000	BURNER, HEAD, D W/GRAPHICS	1	EA	
4	046133-000	BURNER, GRIDDLE, 700- SERIES	1	EA	
5	066172-000	BURNER HEAD, E	2	EA	
6	066173-000	BASE, BNR, E-SIZE	2	EA	
7	046964-000	SCREW, 10-32 X 3/4", CTSK, BLACK	8	EA	
8	067030-000	VENTURI, E NAT, FLANGE, BNR	2	EA	
8	067031-000	VENTURI, E LP, FLANGE, BNR	2	EA	
9	066802-000	ORIFICE, BNR, STD, 2.18MM	2	EA	
9	066804-000	ORIFICE, BNR, STD 1.32MM	2	EA	
10	066805-000	ORIFICE, BNR, STD, 1.22MM	1	EA	
10	066807-000	ORIFICE, BNR, STD .813MM	1	EA	
11	051541-000	C VENTURI INSERT	1	EA	
12	PB040190	90 DEGREE ORIFICE FITTING #50 NAT	1	EA	
12	002513-000	90 DEGREE ORIFICE FITTING #57 LP	1	EA	
13	067028-000	VENTURI, C NAT, C LP, FLANGE, BNR	1	EA	
14	063295-000	HOLDER, JET, BURNER	4	EA	
15	074851-000	TUBING, FLEX, FLR/COMP, W/FITTINGS, 15"	2	EA	
16	074854-000	TUBING, FLEX, FLR/COMP, W/FITTINGS, 20"	2	EA	
17	066803-000	ORIFICE, BNR, STD, 1.70MM	1	EA	
17	066806-000	ORIFICE, BNR, STD 1.07MM	1	EA	
18	066171-000	VENTURI, D NAT, D LP, FLANGE, BNR	1	EA	
19	044310-000	TUBING, 3/4" FLEX, SST, 13"	1	EA	
20	044321-000	FITTING, ADAPTOR, 3/4" FLEX TUBING	2	EA	
21	046119-000	PRESSURE REGULATOR (NAT)	1	EA	





Item	Part No.	Name	Qty	Uom	NOTES
21	046120-000	REGULATOR, PRSS, 3/4" INLET, 3/4" OUTLET (LP)	1	EA	
22	PB020126	3/8" S.S. FLEX TUBING 15" (DGCU)	2	EA	
23	PB040050	3/8" MALE COMP. FITTING W/FERRULE	2	EA	
24	009111-000	VALVE, SOL, SINGLE	1	EA	
25	PB040213	3/8" COMPRESSION NUT (DGCU)	1	EA	
26	PB040192	3/8" CC FERREL (DGCU)	1	EA	
27	007147-000	SHUT OFF VALVE	1	EA	
28	002884-000	MANIFOLD PLUG	1	EA	
29	061225-000	VALVE, GAS, C & D-BNR, NAT	2	EA	
29	061227-000	VALVE, GAS, C & D-BNR, LP	2	EA	
30	061224-000	VALVE, GAS, E-BNR, NAT	2	EA	
30	061226-000	VALVE, GAS, E-BNR, LP	2	EA	
31	056427-000	MANIFOLD, GRIDDLE, GAS, 36", ASM	1	EA	
32	PD010012	VALVE BOLT 1/4-20 UNC-2B 5/16" M.S.	6	EA	
33	066177-000	BASE, BNR, C-SIZE	1	EA	
34	066105-000	BASE, BNR, D	1	EA	

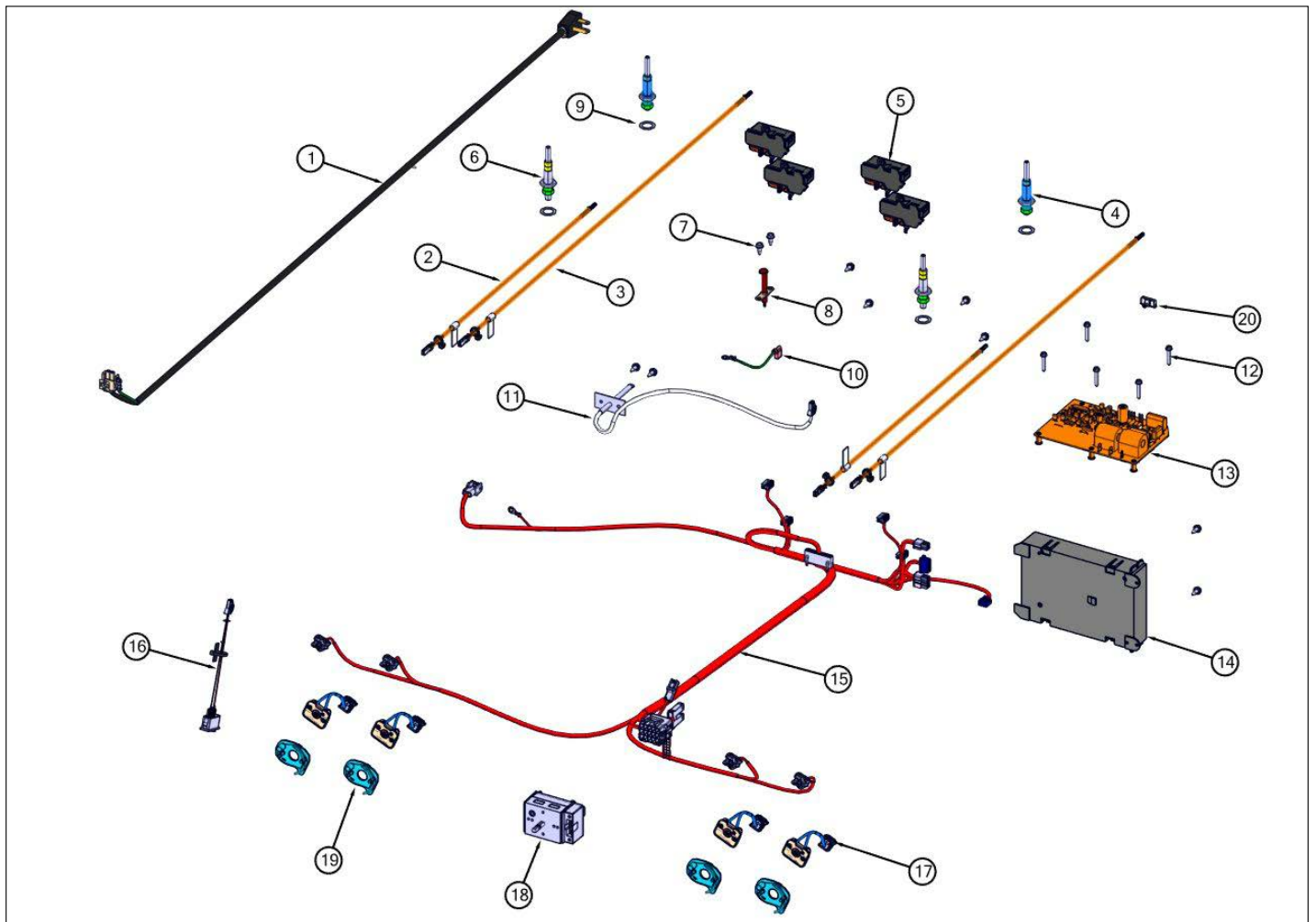
Control View





Item	Part No.	Name	Qty	Uom	NOTES
1	061041-000	KNOB, BURNER, ASSY (SEE 042558-000)	4	EA	
2	067119-2617	KNOB, THERMOSTAT, GRIDDLE, ASSY W/GRAPHICS (SEE 067117-000)	1	EA	
3	062341-000	NAMEPLATE, VIKING, 3.500", W/LOC PINS	1	EA	
4	PD020046	' #8 X 1/2 SCREWS	4	EA	
5	PD020269	#8 PAN HEAD SCREW	2	EA	
6	061090-501	BEZEL, ASSY, LED, SQUARE, LARGE	5	EA	
Comments for Part Num. 061090-501					
profixappliances@gmail.com on Feb 27, 2020					
SEE SERVICE BULLETIN TC-0126-SP REGARDING NEW BEZELS					
7	044937-000	LENS, COVER, LED, CLEAR	5	EA	
8	PD020032	SRW-8(A)X3/8"PH.WFR HD 7/16DIA*NICL	4	EA	
9	064801-2645	WELD, PANEL, CTRL, VRT7364G ASM W/GRAPHICS	1	EA	

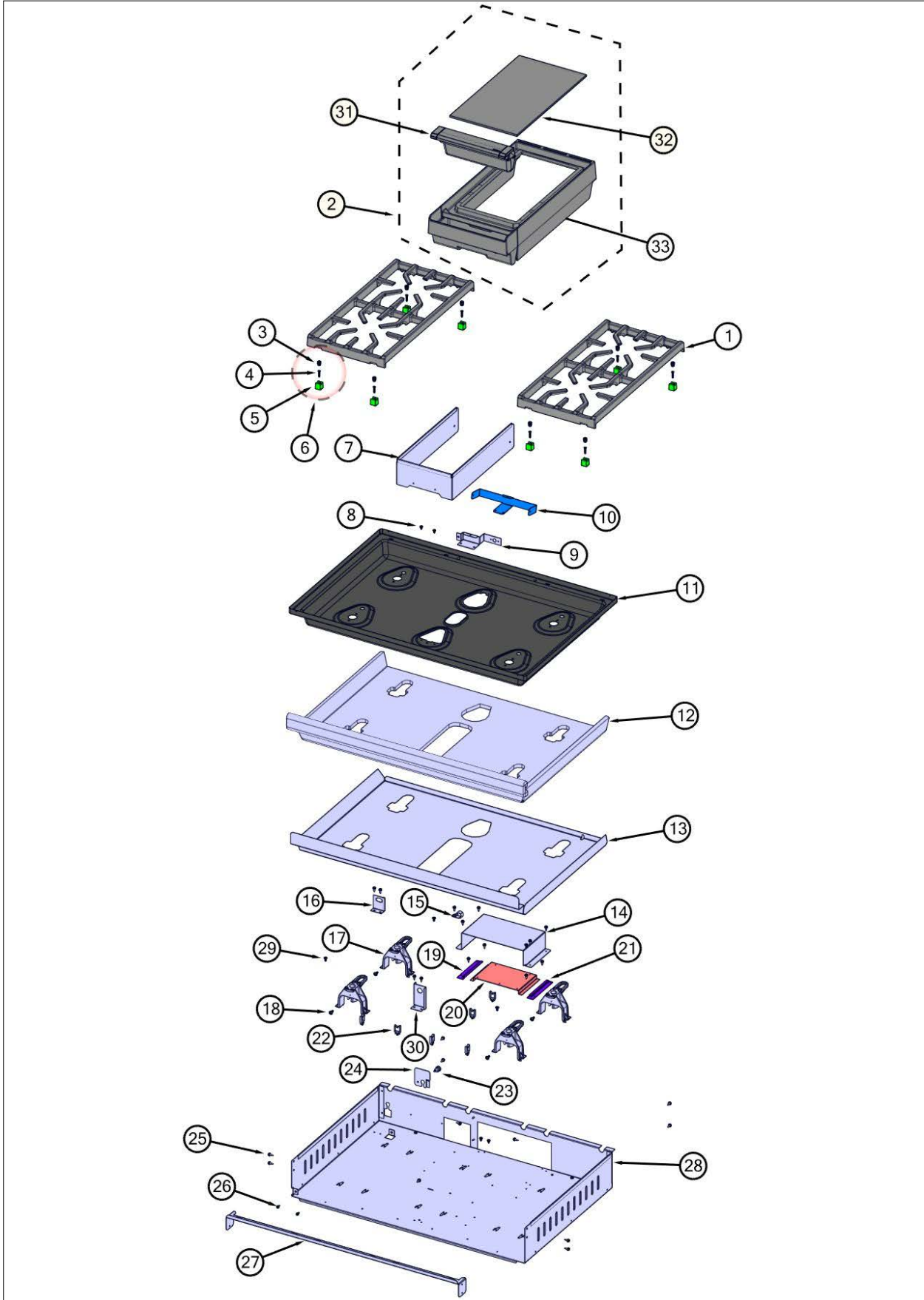
Electrical View





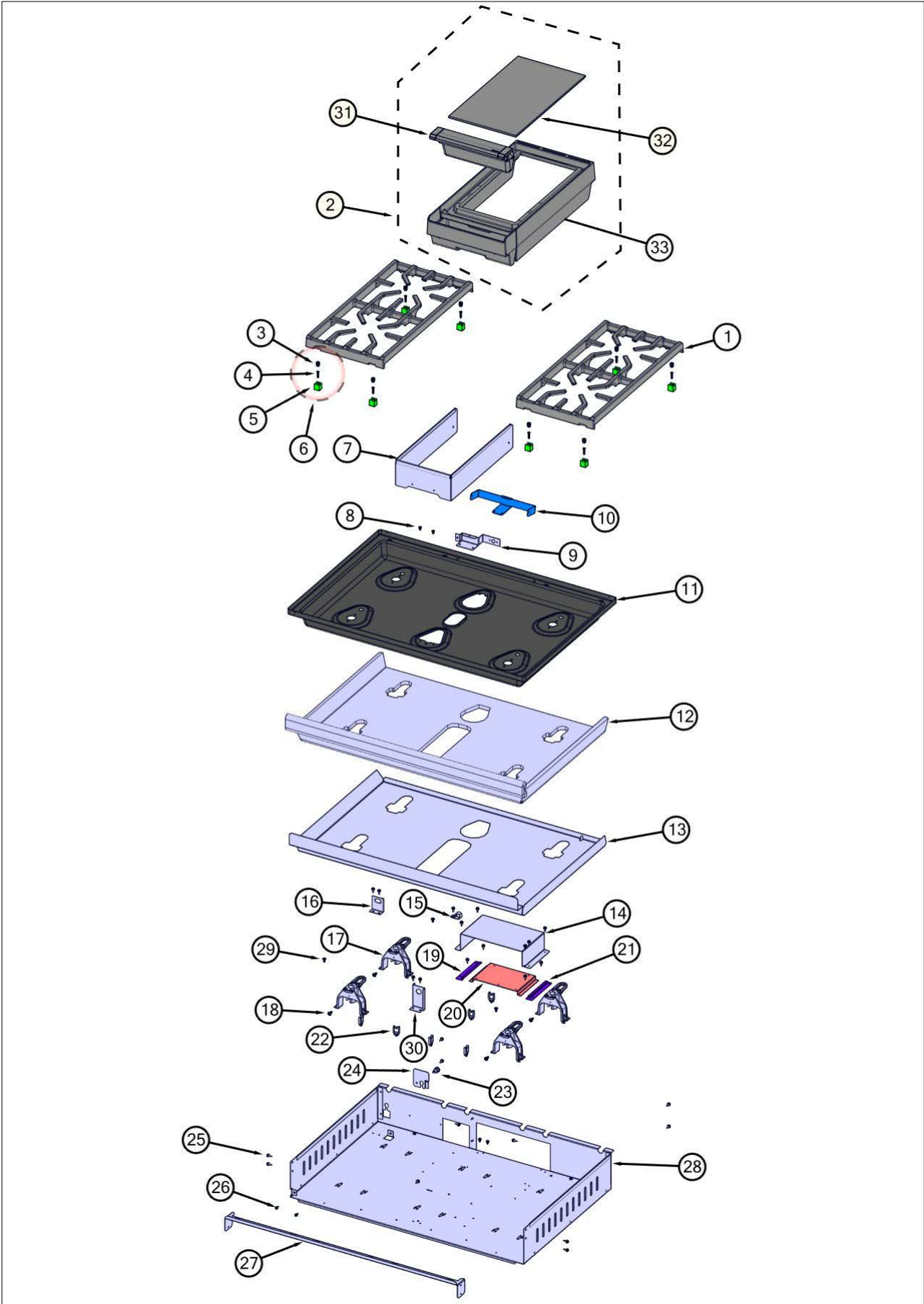
Item	Part No.	Name	Qty	Uom	NOTES
1	044747-000	CORD, SUPPLY, CORD	1	EA	
2	058659-603	HARN, VGR5, ELEC, BURN, FRNT	2	EA	
3	058659-604	HARN, VGR5, ELEC, BURN, REAR	2	EA	
4	066808-000	ELECTRODE , ASM, D	2	EA	
5	062214-000	EGRID, REMOTE MOUNT, 120VAC	4	EA	
6	066809-000	ELECTRODE, ASM E	2	EA	
7	003860-000	10-18 x .500 FASTNR,SCR,HXWH,STL,ZPLT	10	EA	
8	PA020028	SPARK IGNITER	1	EA	
9	045932-000	WASHER, ELECTRODE	4	EA	
10	043994-000	WIRE, GROUND, 5"	1	EA	
11	059021-000	RTD, TE, 18IN	1	EA	
12	M0211021	SCREW-SM	5	EA	
13	043453-000	MODULE, DSI	1	EA	
14	062885-501	CNTRL, MODULE, ULC	1	EA	
15	063276-000	HARN, VRT7364G, MAIN	1	EA	
16	046283-000	SWITCH, LIGHTS, ACCENT W/CONN	1	EA	
17	061211-000	SWITCH, VALVE, SPST, 2 PIN CON	4	EA	
18	065702-579	TSTAT, SMPS, ELEC, 2-POS	1	EA	
19	063640-000	ADAPTER, BEZEL, LED	4	EA	
20	038655-000	GRIDDLE,JUMPER,BRIGADE	1	EA	
NI	063277-000	HARN, VRT5364G, CP	1	EA	

Surface Cooking View





Item	Part No.	Name	Qty	Uom	NOTES
1	042545-000	GRATE, CAST, 12"	2	EA	
2	066471-000	ASM, GRIDDLE	1	EA	
3	052260-000	SILENCER, GRATE	8	EA	
4	049534-000	SCREW, 8-32 X 3/4, PHIL, FLAT	8	EA	
5	052259-000	SUPPORT, GRATE	8	EA	
6	058147-000	GRATE, LEG, ASSY, PHASE 2 (BLK)	8	EA	
<p>Comments for Part Num. 058147-000</p> <p>gboltz@VikingRange.com on Jun 6, 2016</p> <p>See parts bulletin 2016-03P Grate support changes</p>					
7	046854-000	SHIELD, HEAT	1	EA	
8	037304-000	FASTENER, PNH, TORX, AB, PSVD, WAX	4	EA	
9	066343-000	BRKT, BRNR, SPT	1	EA	
10	052295-000	HOLDER, BNR, REAR	1	EA	
11	045890-402	PAN, BNR, 36" 4G	1	EA	
12	049777-000	INSULATION, LINER, GRIDDLE, BURNER PAN, 36"	1	EA	
13	049750-000	TRAY, INSULATION, BURNER PAN, GRIDDLE, 36"	1	EA	
14	066342-000	COVER, MNTG, DSI	1	EA	
15	pd030109	INSULATED CLAMP	1	EA	
16	033668-000	BRACKET, DISCONNECT	1	EA	
17	066170-000	SUPPORT, HLDR, JET	4	EA	
18	PD020068	' #10 - 32 X 1/2"TRUSS. PHIL. M.*SS*	4	EA	
19	066340-000	BRKT, SLIDE, MNTG, DSI, RH	1	EA	
20	066339-000	BRKT, MNTG, DSI, VRT7	1	EA	
21	066341-000	BRKT, SLIDE, MNTG, DSI, LH	1	EA	
22	045548-000	CLIP, ROUTING, WIRE	6	EA	
23	pe070069	STRAIGHT-THRU BUSHING	1	EA	
24	049959-000	CVR, STRN, RELIEF	1	EA	
25	003860-000	10-18 x .500 FASTNR,SCR,HXWH,STL,ZPLT	21	EA	





Item	Part No.	Name	Qty	Uom	NOTES
26	PD020010	10 X 3/8 GREEN GROUNDING SCREW	2	EA	
27	049744-000	BRACKET, MTG, 36" CONTROL PANEL	1	EA	
28	066338-000	BOX, BNR, VRT736	1	EA	
29	014143-000	SCR 10-12 A SHLD TRP 1/2 S ZN BLUE	4	EA	
30	045888-000	BRKT, GRDL	1	EA	
NI	049797-000	INSULATION, 1/4", ADHESIVE BACKED	1	EA	
31	066839-000	TROUGH, GRS, GRIDDLE, ASM	1	EA	
32	054388-000	PLATE, REVERSIBLE, NON-STICK, GRILL, GRIDDLE	1	EA	
33	047069-000	BASE, SUMP, GRIDDLE, ASM	1	EA	



Appendix A:Pages Index

Control View	3
Decor View	1
Electrical View	4
Gas Asm View	2
Surface Cooking View	5



Appendix B:Parts Index

002513-000	2	052295-000	5
002884-000	2	052427-000	1
003801-000	1	054388-000	5
003860-000	1, 2, 4, 5	056427-000	2
007147-000	2	058147-000	5
009111-000	2	058659-603	4
014143-000	1, 5	058659-604	4
033668-000	5	059021-000	4
037304-000	5	061041-000	3
038655-000	4	061090-501	3
042117-000	1	061211-000	4
042545-000	5	061224-000	2
043453-000	4	061225-000	2
043994-000	4	061226-000	2
044310-000	2	061227-000	2
044321-000	2	062214-000	4
044747-000	4	062341-000	3
044937-000	3	062885-501	4
045548-000	5	063276-000	4
045888-000	5	063277-000	4
045890-402	5	063295-000	2
045932-000	4	063640-000	4
046053-000	1	064801-2645	3
046119-000	2	065702-579	4
046120-000	2	066105-000	2
046133-000	2	066169-000	2
046283-000	4	066170-000	5
046508-000	1	066171-000	2
046854-000	5	066172-000	2
046964-000	2	066173-000	2
047069-000	5	066174-000	2
049534-000	5	066177-000	2
049744-000	5	066338-000	5
049750-000	5	066339-000	5
049777-000	5	066340-000	5
049797-000	5	066341-000	5
049959-000	5	066342-000	5
051541-000	2	066343-000	5
052259-000	5	066471-000	5
052260-000	5	066802-000	2
		066803-000	2



066804-000 2
066805-000 2
066806-000 2
066807-000 2
066808-000 4
066809-000 4
066839-000 5
067028-000 2
067030-000 2
067031-000 2
067119-2617 3
068206-000 1
074851-000 2
074854-000 2
M0211021 4
PA020028 4
PB020126 2
PB040050 2
PB040190 2
PB040192 2
PB040213 2
PD010012 2
PD020010 5
PD020032 3
PD020046 3
PD020068 5
PD020269 3
pd030109 5
pe070069 5