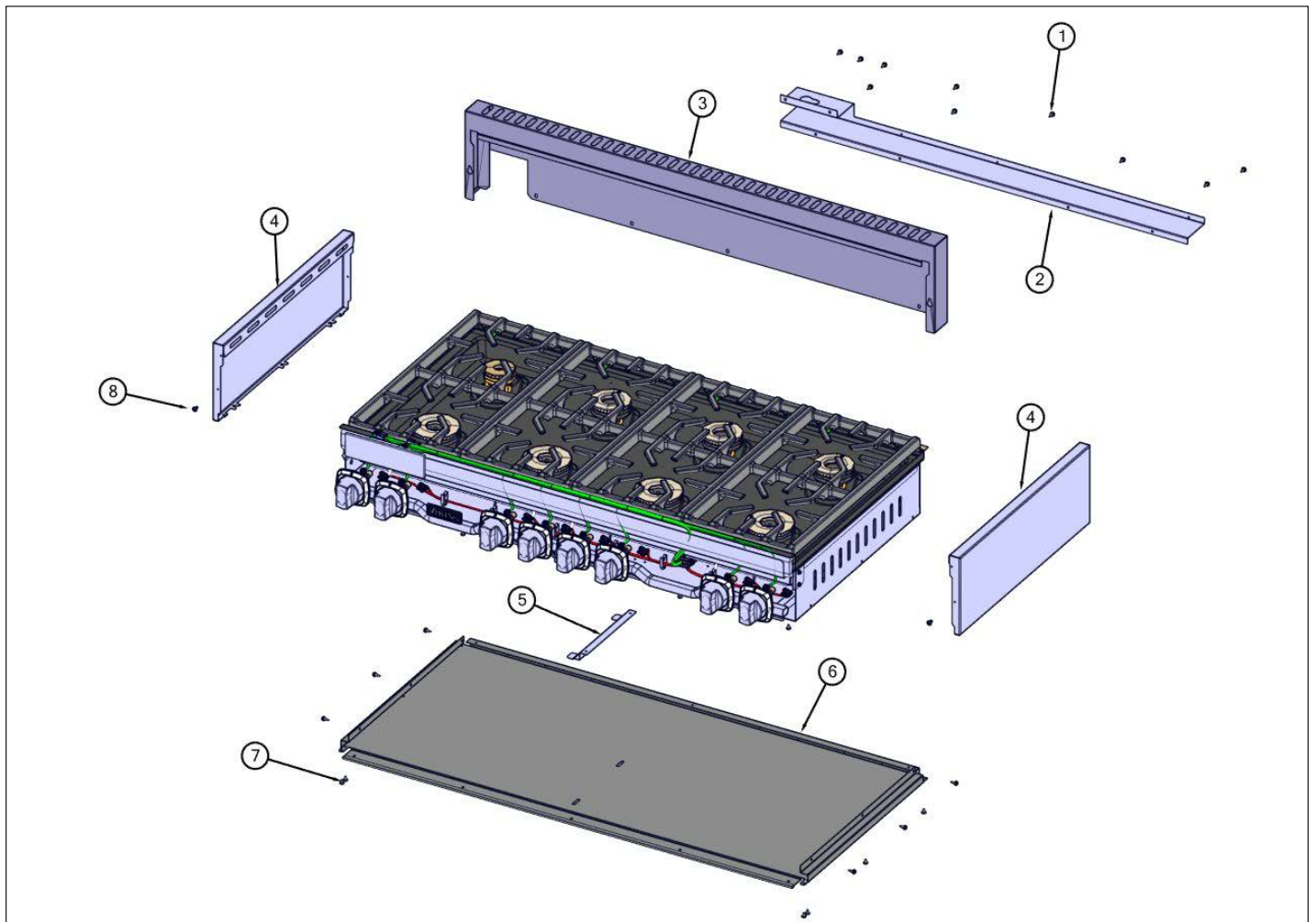


**VRT7488BSS01**

Decor View .....	1
Electrical View .....	2
Surface Cooking View .....	3
Gas Asm View .....	4
Control View .....	5
Appendix A:Pages Index .....	A
Appendix B:Parts Index .....	B



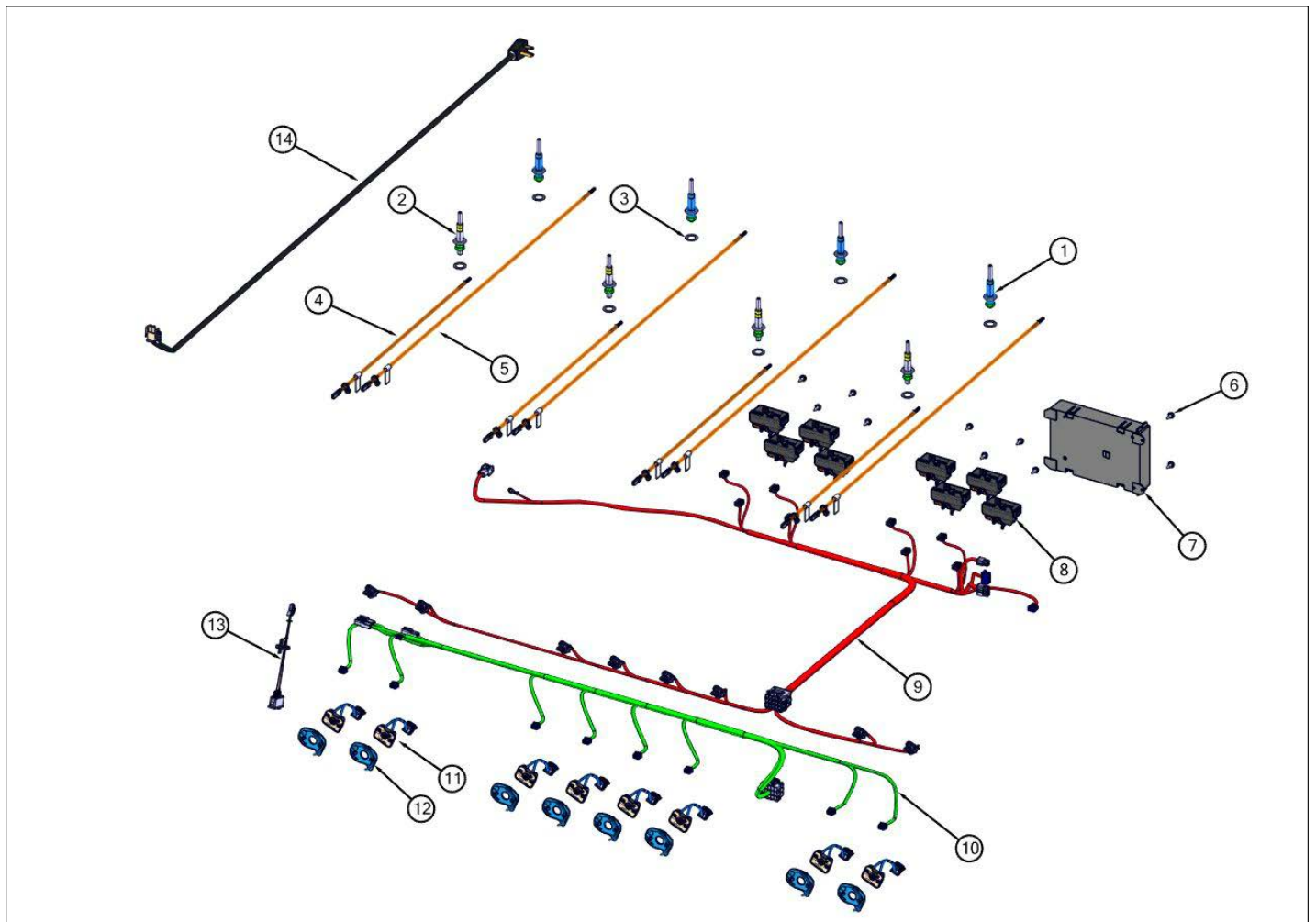
Decor View





Item	Part No.	Name	Qty	Uom	NOTES
1	003860-000	10-18 x .500 FASTNR,SCR,HXWH,STL,ZPLT	16	EA	
2	068205-000	SHIELD, BRKT, VRT748	1	EA	
3	042797-000	TRIM, IS, VGR, 48"	1	EA	
4	052892-000	COVER, OS, RH/LH UPPER	2	EA	
5	046508-000	BRACKET, SPRT, BOT	1	EA	
6	046117-000	RANGETOP, PANEL, BOTTOM, VGRT748	1	EA	
7	PD020032	SRW-8(A)X3/8"PH.WFR HD 7/16DIA*NICL	6	EA	
8	014143-000	SCR 10-12 A SHLD TRP 1/2 S ZN BLUE	2	EA	

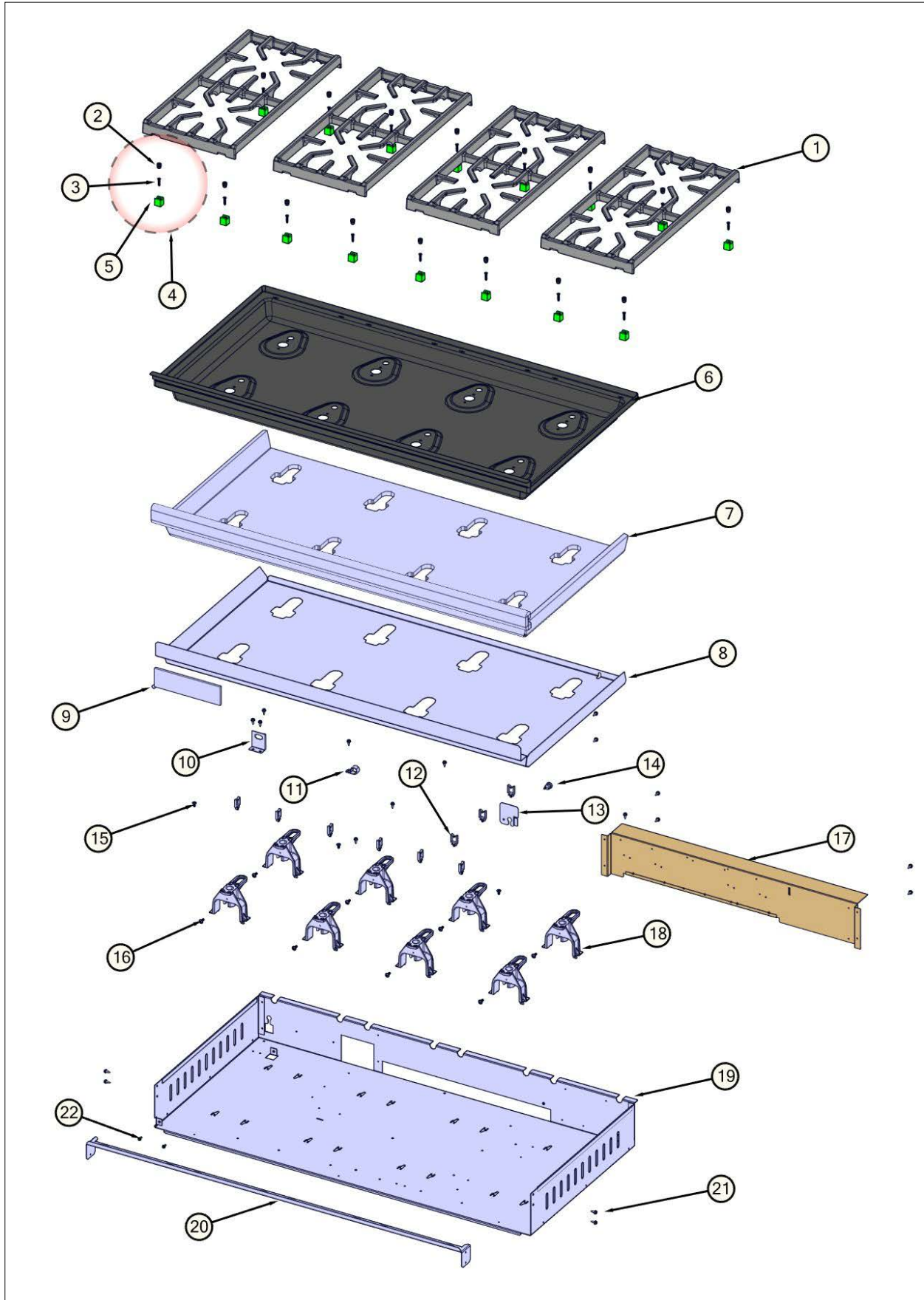
Electrical View





Item	Part No.	Name	Qty	Uom	NOTES
1	066808-000	ELECTRODE , ASM, D	4	EA	
2	066809-000	ELECTRODE, ASM E	4	EA	
3	045932-000	WASHER, ELECTRODE	8	EA	
4	058659-603	HARN, VGR5, ELEC, BURN, FRNT	4	EA	
5	058659-604	HARN, VGR5, ELEC, BURN, REAR	4	EA	
6	003860-000	10-18 x .500 FASTNR,SCR,HXWH,STL,ZPLT	10	EA	
7	062885-501	CNTRL, MODULE, ULC	1	EA	
8	062214-000	EGRID, REMOTE MOUNT, 120VAC	8	EA	
9	063209-000	HARN, VRT7488B, MAIN	1	EA	
10	063210-000	HARN, VRT7488B, CP	1	EA	
11	061211-000	SWITCH, VALVE, SPST, 2 PIN CON	8	EA	
12	063640-000	ADAPTER, BEZEL, LED	8	EA	
13	046283-000	SWITCH, LIGHTS, ACCENT W/CONN	1	EA	
14	044747-000	CORD, SUPPLY, CORD	1	EA	

Surface Cooking View

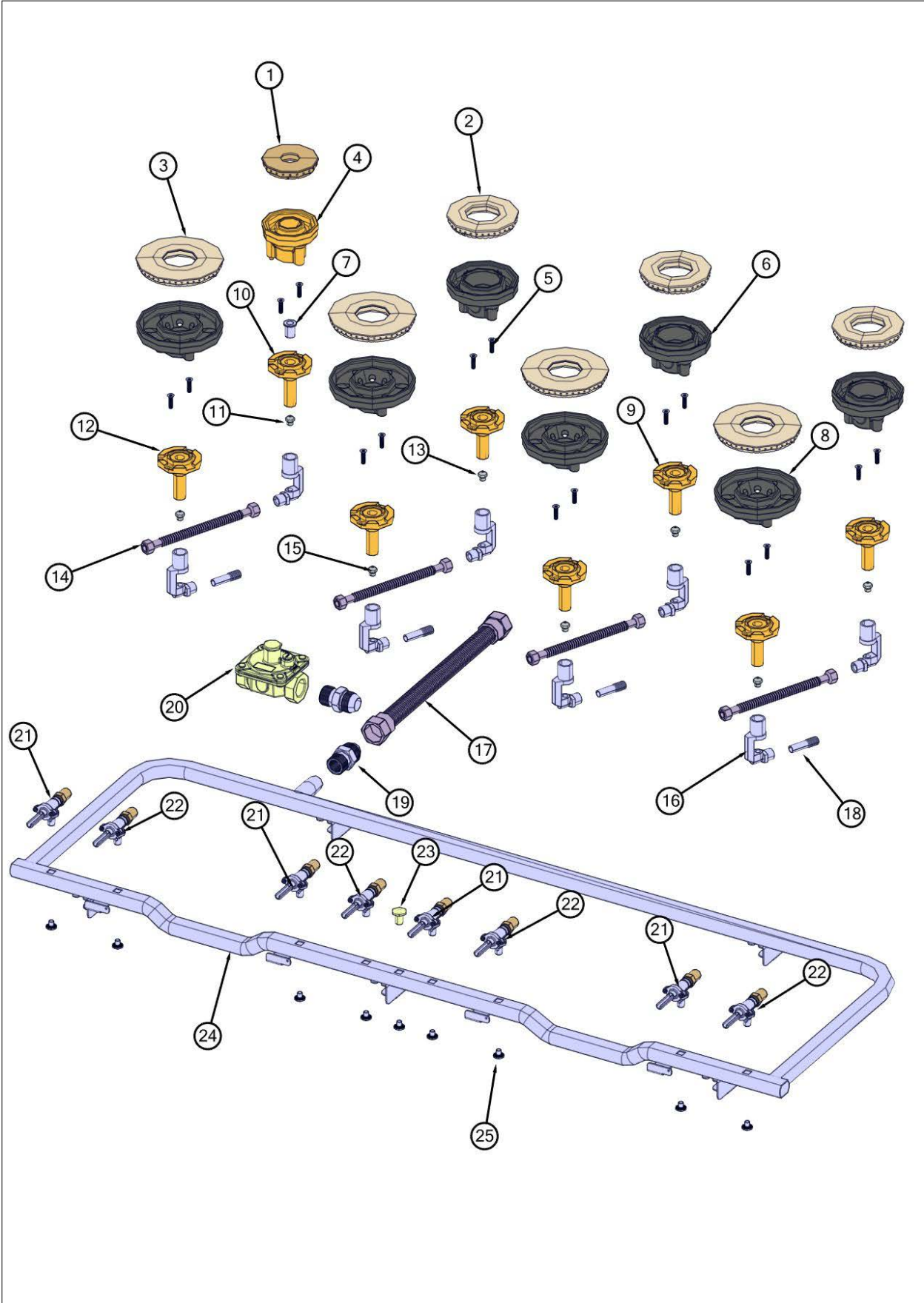




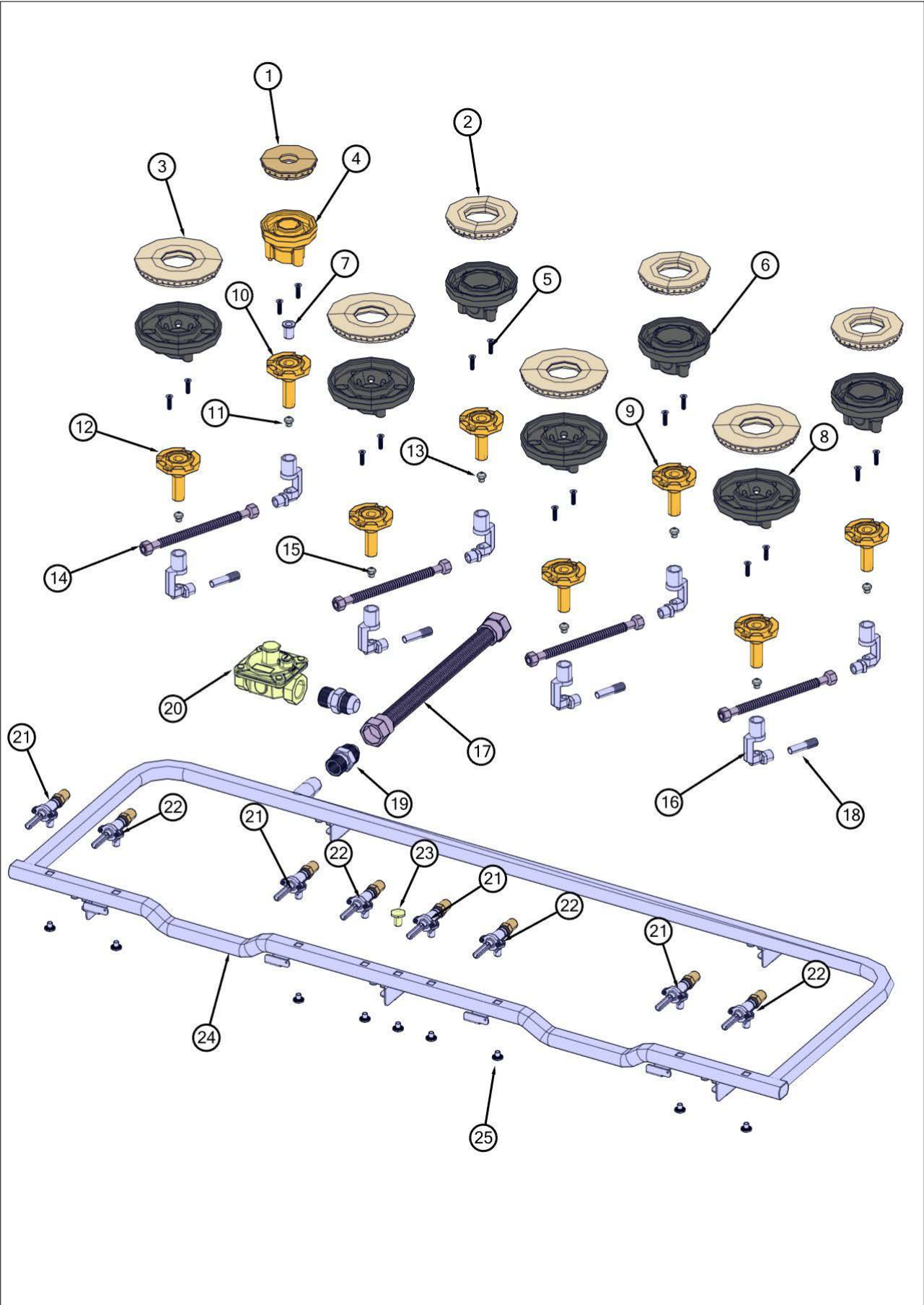


Item	Part No.	Name	Qty	Uom	NOTES
1	042545-000	GRATE, CAST, 12"	4	EA	
2	052260-000	SILENCER, GRATE	16	EA	
3	049534-000	SCREW, 8-32 X 3/4, PHIL, FLAT	16	EA	
4	058147-000	GRATE, LEG, ASSY, PHASE 2 (BLK)	16	EA	
Comments for Part Num. 058147-000					
gboltz@VikingRange.com on Jun 6, 2016					
See parts bulletin 2016-03P Grate support changes					
5	052259-000	SUPPORT, GRATE	16	EA	
6	048236-402	PAN, BNR, SHIM, ASM, BK	1	EA	
7	049743-000	INSULATION, LINER, BURNER PAN, 48"	1	EA	
8	049695-000	TRAY, PNL, INSULATION, BURNER PAN, 48"	1	EA	
9	049797-000	INSULATION, 1/4", ADHESIVE BACKED	1	EA	
10	033668-000	BRACKET, DISCONNECT	1	EA	
11	pd030109	INSULATED CLAMP	1	EA	
12	045548-000	CLIP, ROUTING, WIRE	9	EA	
13	049959-000	CVR, STRN, RELIEF	1	EA	
14	pe070069	STRAIGHT-THRU BUSHING	1	EA	
15	014143-000	SCR 10-12 A SHLD TRP 1/2 S ZN BLUE	3	EA	
16	PD020068	' #10 - 32 X 1/2"TRUSS. PHIL. M.*SS*	8	EA	
17	065157-000	BRKT, MNTG, EGRID, VRT748	1	EA	
18	066170-000	SUPPORT, HLDR, JET	8	EA	
19	064981-000	BOX, BNR, VRT748	1	EA	
20	049728-000	BRACKET, MTG, 48" CONTROL PANEL	1	EA	
21	003860-000	10-18 x .500 FASTNR,SCR,HXWH,STL,ZPLT	13	EA	
22	PD020010	10 X 3/8 GREEN GROUNDING SCREW	2	EA	

Gas Asm View



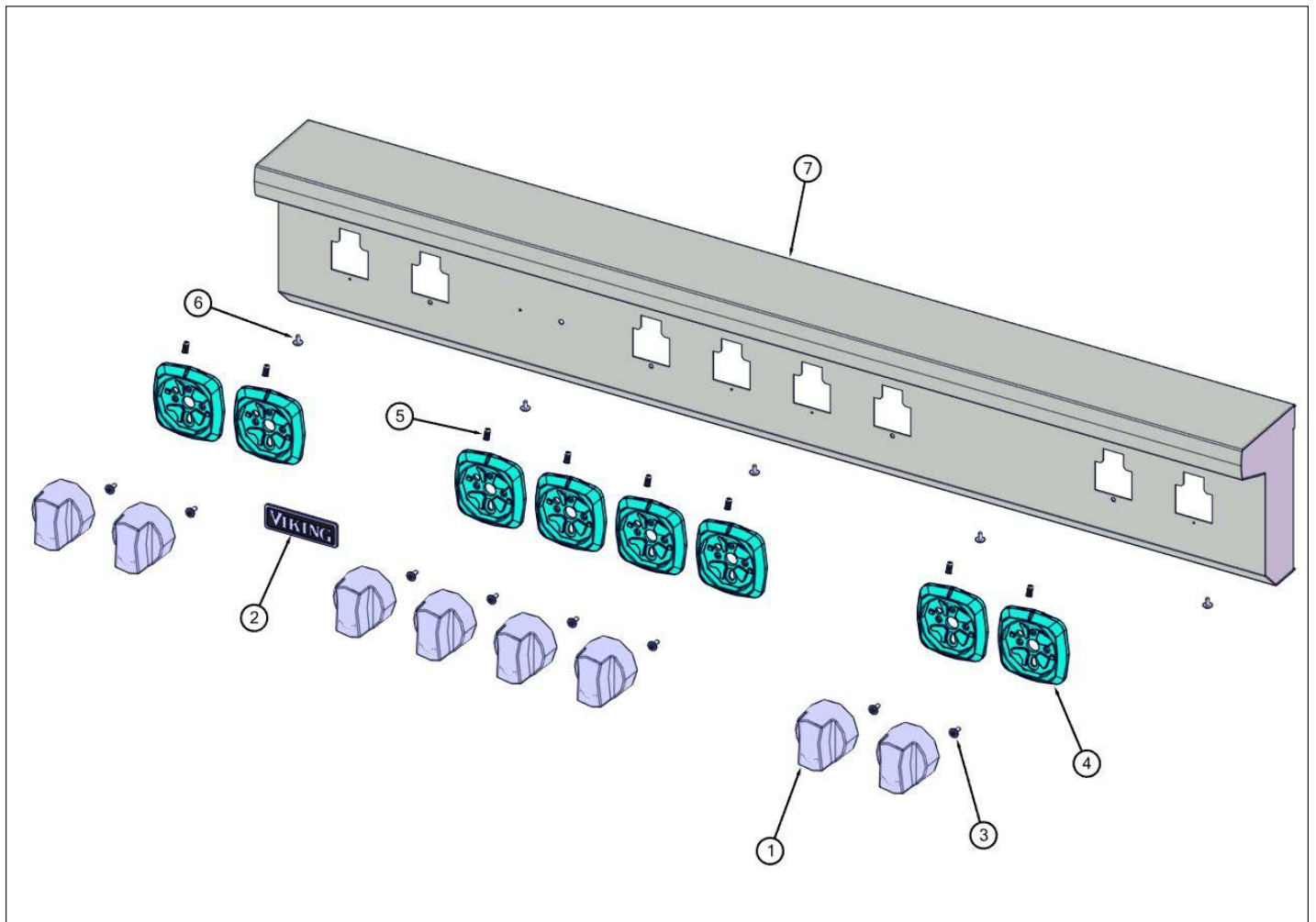
Item	Part No.	Name	Qty	Uom	NOTES
1	066174-000	BURNER, HEAD, C	1	EA	
2	066169-000	BURNER, HEAD, D W/GRAPHICS	3	EA	
3	066172-000	BURNER HEAD, E	4	EA	
4	066177-000	BASE, BNR, C-SIZE	1	EA	
5	046964-000	SCREW, 10-32 X 3/4", CTSK, BLACK	16	EA	
6	066105-000	BASE, BNR, D	3	EA	
7	051541-000	C VENTURI INSERT	1	EA	
8	053357-000	BASE, BNR, E-SIZE	4	EA	
9	066171-000	VENTURI, D NAT, D LP, FLANGE, BNR	3	EA	
10	067028-000	VENTURI, C NAT, C LP, FLANGE, BNR	1	EA	
11	066805-000	ORIFICE, BNR, STD, 1.22MM	1	EA	
11	066807-000	ORIFICE, BNR, STD .813MM	1	EA	
12	067031-000	VENTURI, E LP, FLANGE, BNR	4	EA	
12	067031-000	VENTURI, E LP, FLANGE, BNR	4	EA	
13	066803-000	ORIFICE, BNR, STD, 1.70MM	3	EA	
13	066806-000	ORIFICE, BNR, STD 1.07MM	3	EA	
14	074854-000	TUBING, FLEX, FLR/COMP, W/FITTINGS, 20"	4	EA	
15	066802-000	ORIFICE, BNR, STD, 2.18MM	4	EA	
15	066804-000	ORIFICE, BNR, STD 1.32MM	4	EA	
16	063295-000	HOLDER, JET, BURNER	8	EA	
17	044310-000	TUBING, 3/4" FLEX, SST, 13"	1	EA	
18	074851-000	TUBING, FLEX, FLR/COMP, W/FITTINGS, 15"	4	EA	
19	044321-000	FITTING, ADAPTOR, 3/4" FLEX TUBING	2	EA	
20	046119-000	PRESSURE REGULATOR (NAT)	1	EA	
20	046120-000	REGULATOR, PRSS, 3/4" INLET, 3/4" OUTLET (LP)	1	EA	
21	061224-000	VALVE, GAS, E-BNR, NAT	4	EA	
21	061226-000	VALVE, GAS, E-BNR, LP	4	EA	
22	061225-000	VALVE, GAS, C & D-BNR, NAT	4	EA	
22	061227-000	VALVE, GAS, C & D-BNR, LP	4	EA	





Item	Part No.	Name	Qty	Uom	NOTES
23	002884-000	MANIFOLD PLUG	1	EA	
24	056462-000	MANIFOLD, GAS, 48", ASM	1	EA	
25	PD010012	VALVE BOLT 1/4-20 UNC-2B 5/16" M.S.	9	EA	

Control View





Item	Part No.	Name	Qty	Uom	NOTES
1	061041-000	KNOB, BURNER, ASSY (SEE 042558-000)	8	EA	
2	062341-000	NAMEPLATE, VIKING, 3.500", W/LOC PINS	1	EA	
3	PD020046	' #8 X 1/2 SCREWS	8	EA	
4	061090-501	BEZEL, ASSY, LED, SQUARE, LARGE	8	EA	
Comments for Part Num. 061090-501					
profixappliances@gmail.com on Feb 27, 2020					
SEE SERVICE BULLETIN TC-0126-SP REGARDING NEW BEZELS					
5	044937-000	LENS, COVER, LED, CLEAR	8	EA	
6	PD020032	SRW-8(A)X3/8"PH.WFR HD 7/16DIA*NICL	5	EA	
7	064720-2860	ASM, WELD, PNL, CTRL, VRT7488B, W/GRAPHICS	1	EA	



Appendix A:Pages Index

Control View .....	5
Decor View .....	1
Electrical View .....	2
Gas Asm View .....	4
Surface Cooking View .....	3





Appendix B:Parts Index

002884-000	4	061227-000	4
003860-000	1, 2, 3	062214-000	2
014143-000	1, 3	062341-000	5
033668-000	3	062885-501	2
042545-000	3	063209-000	2
042797-000	1	063210-000	2
044310-000	4	063295-000	4
044321-000	4	063640-000	2
044747-000	2	064720-2860	5
044937-000	5	064981-000	3
045548-000	3	065157-000	3
045932-000	2	066105-000	4
046117-000	1	066169-000	4
046119-000	4	066170-000	3
046120-000	4	066171-000	4
046283-000	2	066172-000	4
046508-000	1	066174-000	4
046964-000	4	066177-000	4
048236-402	3	066802-000	4
049534-000	3	066803-000	4
049695-000	3	066804-000	4
049728-000	3	066805-000	4
049743-000	3	066806-000	4
049797-000	3	066807-000	4
049959-000	3	066808-000	2
051541-000	4	066809-000	2
052259-000	3	067028-000	4
052260-000	3	067031-000	4, 4
052892-000	1	068205-000	1
053357-000	4	074851-000	4
056462-000	4	074854-000	4
058147-000	3	PD010012	4
058659-603	2	PD020010	3
058659-604	2	PD020032	1, 5
061041-000	5	PD020046	5
061090-501	5	PD020068	3
061211-000	2	pd030109	3
061224-000	4	pe070069	3
061225-000	4		
061226-000	4		